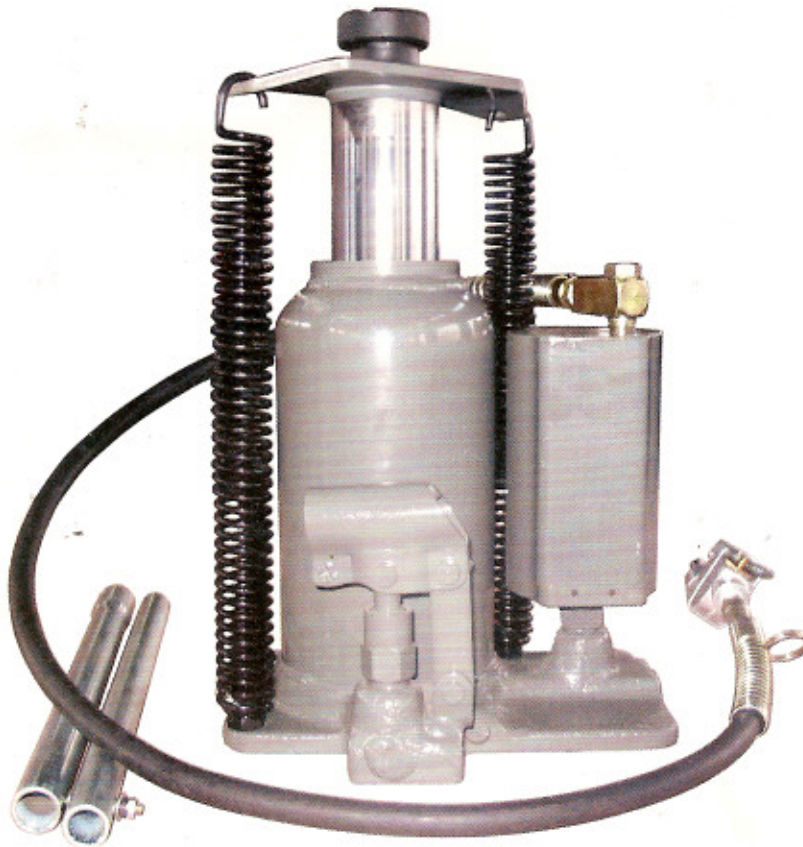




OWNER'S MANUAL

PNEUMATIC/HYDRAULIC JACK



NO. Y432020: 20 TON
NO.: Y432003: 20 TON

WARNING

Read the instructions and safety warnings before operating the jack. Failure to heed the instructions and safety warnings may result in personal injury or property damages.



Gaither Tool Company
2255 W. Morton Ave., Jacksonville, IL 62650

Revised on 2-25-2005

THIS OWNER'S MANUAL CONTAINS IMPORTANT DETAILS CONCERNING SAFE OPERATIONS OF THIS LIFTING DEVICE. THE USER MUST READ AND UNDERSTAND THESE DETAILS BEFORE ANY USE OF THE DEVICE. THIS MANUAL MUST BE RETAINED FOR FUTURE REFERENCE.

OWNER/ USER RESPONSIBILITY

The owner and/or the operator shall study the product instructions and retain them for future reference.

The owner and/or the operator shall have an understanding of the product operating instructions and warnings before operating the jack.

Warning information shall be emphasized and understood. If the operator is not fluent in English, the product instructions and warnings shall be read to and discussed with the operator in the operator's native language by the purchaser/owner or his designee, making sure that the operator comprehends its contents.

INSPECTION

Visual inspection should be made before each use of the jack. The inspector should check for abnormal conditions such as cracked weld, leaks, and damage, loose or missing parts.

Any jack that appears to be damaged in any way or is found to be worn or operated abnormally must be removed from the service immediately.

Any jack found abnormal shall be removed from the service until it is repaired by a qualified service center.

If the jack is accidentally subject to an abnormal load or shock, it must be taken out of the service immediately and be inspected by a qualified service center.

It is recommended that an annual inspection is performed on the jack and that any damaged or worn parts, decals or warning labels be replaced with manufacturer's specified parts.

ALTERATION

Because of potential hazards associated with this type of equipment, no alterations shall be made to the product.



WARNING



FOR YOUR SAFETY AND TO PREVENT INJURY:

Use the jack for lifting purposes **ONLY**.

Always support the vehicle with jack stands.



WARNING

THIS IS A LIFTING DEVICE ONLY. DO NOT MOVE OR DOLLY THE VEHICLE WHILE ON THE JACK. AFTER LIFTING, SUPPORT THE VEHICLE WITH APPROPRIATE MEANS IMMEDIATELY.

DO NOT EXCEED RATED CAPACITY. OVERLOADING CAN CAUSE DAMAGE TO OR FAILURE OF THE JACK.

LIFT ONLY ON AREAS OF THE VEHICLE AS SPECIFIED BY THE VEHICLE MANUFACTURER.

CENTER LOAD ON SADDLE PRIOR TO LIFTING. OFF-CENTER LOADS MAY CAUSE DAMAGE TO JACK, LOSS OF LOAD, PROPERTY DAMAGE, PERSONAL OR FATAL INJURY.

THIS JACK IS DESIGNED FOR USE ONLY ON HARD LEVEL SURFACES CAPABLE OF SUSTAINING THE LOAD. USE ON OTHER THAN HARD LEVEL SURFACES CAN RESULT IN JACK INSTABILITY AND POSSIBLE LOSS OF LOAD.

NO ALTERATIONS TO THE JACK SHALL BE MADE.

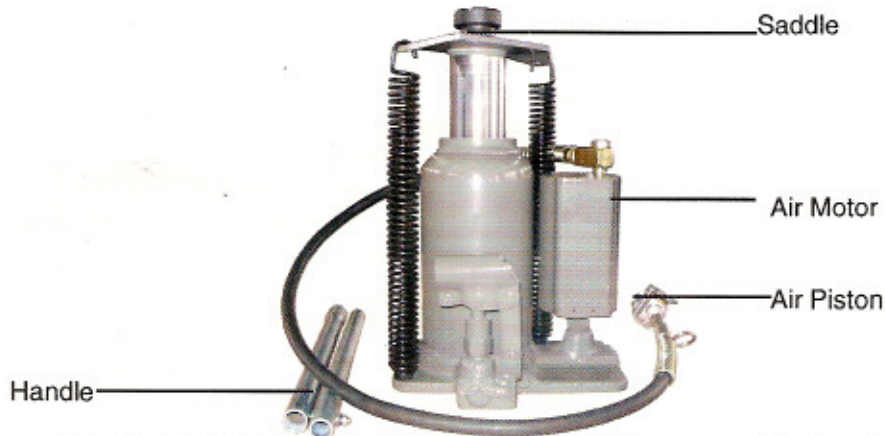
READ, STUDY AND UNDERSTAND THE OPERATING MANUAL PACKED WITH THIS JACK BEFORE OPERATING.

FAILURE TO HEED THESE WARNINGS MAY RESULT IN LOSS OF LOAD, DAMAGE TO JACK, AND/OR FAILURE RESULTING IN PROPERTY DAMAGE, PERSONAL OR FATAL INJURY.

Save these instructions. For your safety and the safety of others around you, read carefully before attempting to assemble, service or use your jack. Observe all safety and warning information. Always wear safety glasses when operating this product. Failure to comply with the information provided with this manual may result in severe, even fatal injury and/ or property damages.

PRODUCT DESCRIPTION

The pneumatic/ hydraulic jack is designed for lifting, but not sustaining loads within its rated capacity. After lifting, loads must be immediately supported by appropriate means. These models are not recommended for use in lifting or positioning houses and/or other building structure. These jacks comply with applicable ASME/ANSI standards. For air actuated use, ensure that your air source is operated within the working pressure.



BEFORE USE

1. Verify that the product and the application are compatible, check with your local service centers if in doubt-
2. Before using this product, read the owner's manual completely and familiarize yourself thoroughly with the product and the hazards associated with its improper use.
3. Open the release valve by turning it counter-clockwise but no more than 2 full turns.
4. With the ram fully retracted, locate the remove the oil filler plug. Insert the handle into the handle socket, and then pump the handle 6 to 8 strokes. This will help release any pressurized air which may be trapped within the reservoir. Ensure the oil level is just below the oil filler plug. Reinstall the oil filler plug.
5. Pour a teaspoon of good quality air tool lubricant into the air pistol (see product description). Connect to air supply and operate the jack with the release valve open for around 3 seconds to evenly distribute lubricant.
5. Check to ensure that the jack moves freely (if so equipped) and that the pump operates smoothly before putting the jack into service. Always replace worn or damaged parts and assemblies with genuine Winntec parts and assemblies.
6. This product is lifted to accept the popular 1/4" NPT air nipple. After installing a 1/4" NPT nipple, ensure that the thread tape or compound is secured during the operation.
7. Inspect the jack before each use. Do not use if bent, broken or cracked components are noted.

OPERATION

Lifting

1. Assemble the handle. Ensure that spring clips are secured with slots.
2. Secure the load to prevent inadvertent shifting and movement.
3. Position the jack under the desired lifting point.
4. Close the release valve by turning it clockwise until tight.

CAUTION : Use the handle provided with this product or an authorized replacement handle to ensure proper release valve operation. **DO NOT** use an extension on the air hose nor the operating handle. When use to lift the vehicle, lift only on the manufacturer's recommended lifting point and in accordance with the published guidelines in your vehicle owner's manual. Always use the jack stand to support the load immediately after lifting.

5. Insert and secure the handle into the handle socket. Pump the handle or actuate the air pistol until the saddle reach the load. To end the air operation, simply release the air pistol. **NEVER** wire, clamp or disable the air pistol to function by any means other than the operator's hand.
6. Raise the load to the desired height, then immediately transfer the load to properly rated support devices such as jack stands.

⚠ WARNING ⚠

This is a lifting device only. It is designed to lift a part of a vehicle (a wheel or axle). Always wear safety glasses when using this equipment. Center the load on the saddle before lifting. Never work on, under, or around the load until it is properly supported. Transfer the load immediately to appropriately rated jack stands. **DO NOT** use this product for any purpose other than that it is designed for. It is owner's responsibility to keep labels and instructional materials legible and available. Replacement labels and manuals are available from the manufacturer. Failure to heed these and all other warnings retaining to this product can result in sudden loss of lifted load resulting in death, personal injury or property damages.

Lowering

1. Raise the load properly to carefully remove jack stands.
2. Release the release valve by turning it counter-clockwise, but no more than 1/2 turn.

⚠ WARNING ⚠

Be sure that all tools and personnel are clear before lowering the load. Dangerous dynamic shock loads are created by quickly opening and closing the release valve when the load is being lowered. The resulting overloading may cause failure of the hydraulic system, resulting in severe personal injury and/or property damage.

3. After removing the jack from under the load, set the saddle to its lowest height and make the handle socket down to eliminate exposure to rust and contamination.

MAINTENANCE

Importance: Use only good grade hydraulic jack oil. **NEVER** mixing different types of fluid and **NEVER** use brake fluid, turbine oil, transmission fluid, motor oil or glycerin. Improper fluid can cause premature failure of the jack and sudden and immediate loss of load.

Adding Oil

1. With the saddle fully lowered and the pump piston fully retracted, set the jack in its upright and level position.
2. Fill until the oil level is just up to the oil filling hole. Reinstall the oil filler plug.

Changing Oil

For the best performance and longest life, replace the complete oil at least once a year.

1. With the saddle fully lowered and the pump piston fully retracted. Remove the oil filler plug.
2. Lay the jack on its side and drain the fluid into a suitable container.

Note: Dispose of hydraulic fluid in accordance with local regulations.

3. Fill with good grade jack oil. Reinstall the oil filler plug. It is strongly recommended to use Mobil DTE 13, OK Delta 10, or equivalent.

Lubrication

1. A light coating of lubricant to pivot points, axles and hinges will help to prevent rust and assure wheels, castors and pump assemblies to move smoothly.
2. Periodically check the pump piston and the ram for signs of rust or corrosion. Clean as needed and wipe with oil cloth.

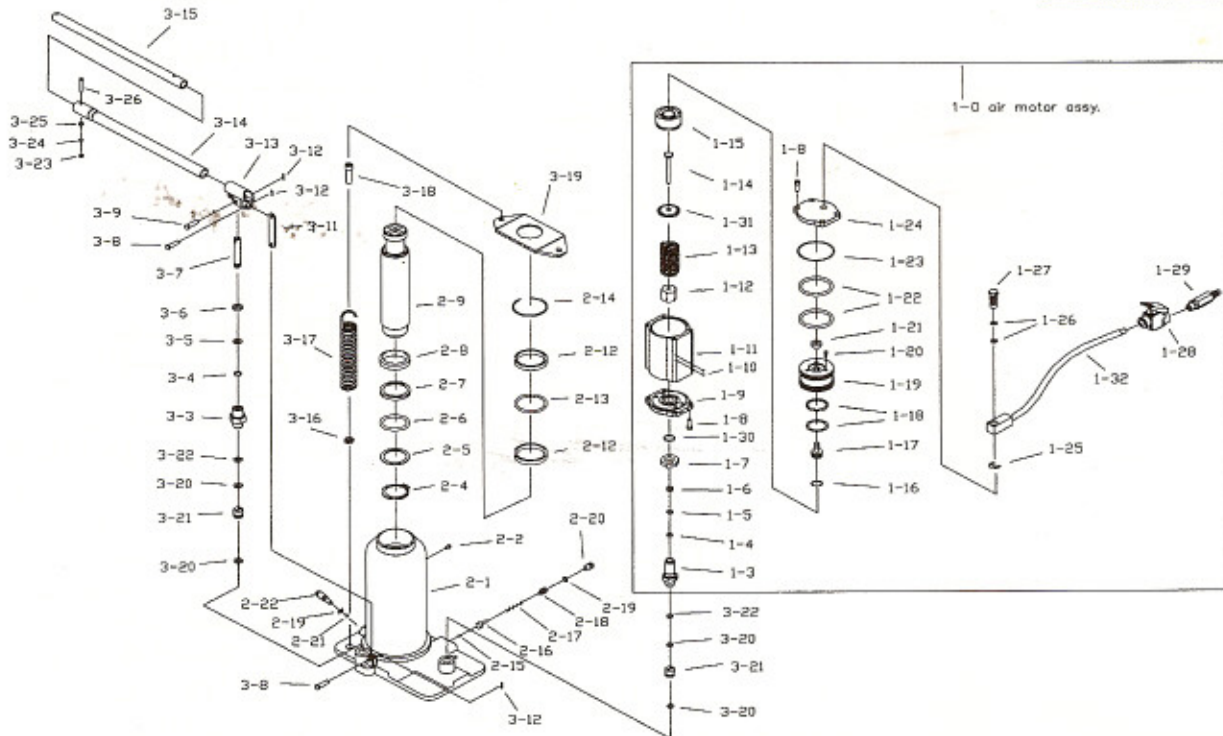
NEVER apply any sandpaper or abrasive material to the jack.

3. When not in use, store the jack with the pump piston and the ram fully retracted.

TROUBLE SHOOTING

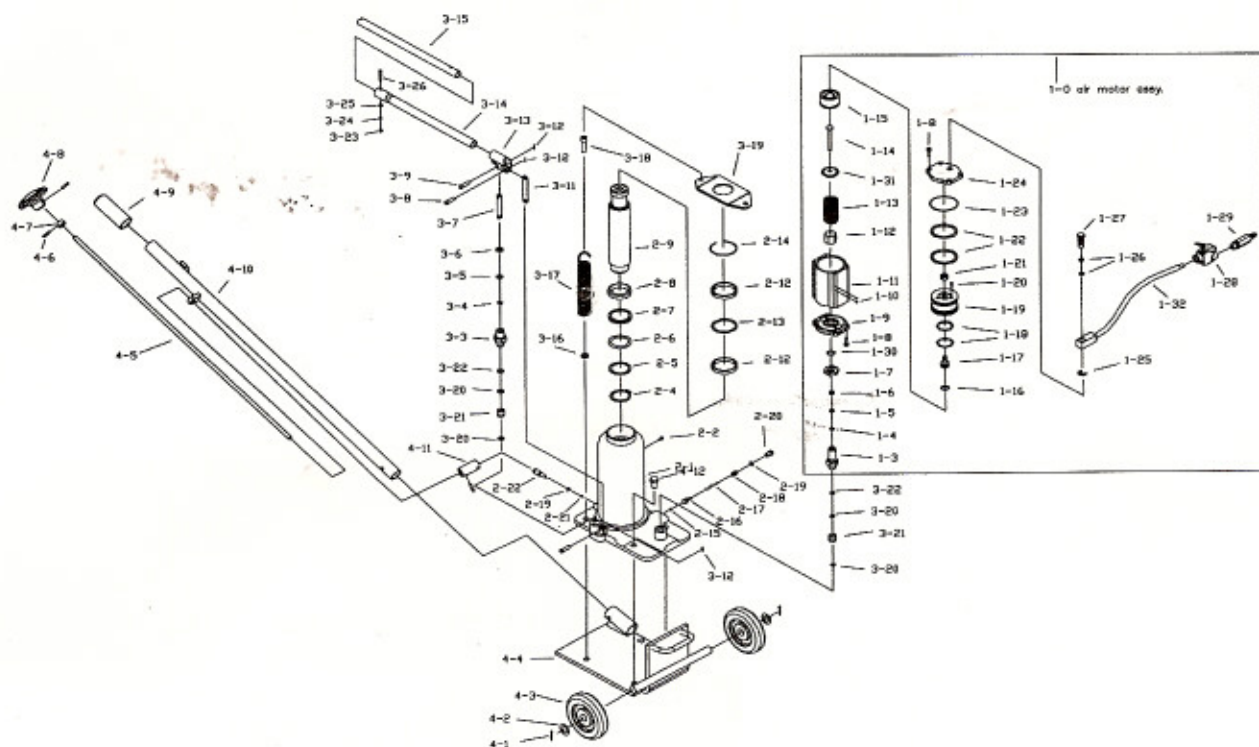
Symptom	Causes	Remedy
Jack will not lift the load.	<ol style="list-style-type: none"> 1. The release valve is not tightly closed. 2. The jack is overloaded. 3. Inadequate air supply. 	<ol style="list-style-type: none"> 1. Tighten the release valve. 2. Rectify the overload condition. 3. Check and ensure adequate air supply.
Jack bleeds off after lifting.	<ol style="list-style-type: none"> 1. The release valve is not tightly closed. 2. The jack is overloaded. 3. The hydraulic unit malfunctions. 	<ol style="list-style-type: none"> 1. Tighten the release valve. 2. Rectify the overload condition. 3. Contact the local service center.
Jack will not lower after unloading.	<ol style="list-style-type: none"> 1. The reservoir is overfilled with hydraulic fluid. 2. Linkage binding. 	<ol style="list-style-type: none"> 1. Drain fluid to the proper oil level. 2. Clean and lubricate moving parts.
Poor lifting performance.	<ol style="list-style-type: none"> 1. Low fluid level. 2. Air is trapped inside the hydraulic system. 	<ol style="list-style-type: none"> 1. Ensure proper fluid level. 2. With the ram retracted, remove the oil filler plug. Pump the jack with the release valve open to pressurize the air. Reinstall the oil filler plug.
The jack will not lift to its maximum height.	Low fluid level.	Ensure proper fluid level.

- Spare parts -



Y432020

Pos.	Art. No.	Description	Pos.	Art. No.	Description
1	Y432020-1/0	Air Motor Assy.	43	Y432020-2/15	Steel Ball
2	Y432020-1/3	Pump Cylinder	44	Y432020-2/16	Stud
3	Y432020-1/4	Y-seal	45	Y432020-2/17	Spring
4	Y432020-1/5	Nylon Gasket	46	Y432020-2/18	Pressure Valve
5	Y432020-1/6	Copper Washer	47	Y432020-2/19	O-ring
6	Y432020-1/7	Nut	48	Y432020-2/20	Bolt
7	Y432020-1/8	Bolt	49	Y432020-2/21	Steel Ball
8	Y432020-1/9	Base Cover	50	Y432020-2/22	Release Valve Assy.
9	Y432020-1/10	Steel Ball	51	Y432020-3/3	Pump Cylinder
10	Y432020-1/11	Air Pump Housing	52	Y432020-3/4	O-ring
11	Y432020-1/12	Nut	53	Y432020-3/5	Washer
12	Y432020-1/13	Spring	54	Y432020-3/6	Dustproof Ring
13	Y432020-1/14	Air Pump Plunger	55	Y432020-3/7	Pump Piston
14	Y432020-1/15	Air Piston Base	56	Y432020-3/8	Pin
15	Y432020-1/16	O-ring	57	Y432020-3/9	Pin
16	Y432020-1/17	Air Shuttle Valve	58	Y432020-3/11	Link
17	Y432020-1/18	O-ring	59	Y432020-3/12	Cotter Pin
18	Y432020-1/19	Air Piston	60	Y432020-3/13	Handle Socket
19	Y432020-1/20	Bolt	61	Y432020-3/14	Front Handle
20	Y432020-1/21	Shuttle Valve Seal	62	Y432020-3/15	Rear Handle
21	Y432020-1/22	O-ring	63	Y432020-3/16	Nut
22	Y432020-1/23	O-ring	64	Y432020-3/17	Spring
23	Y432020-1/24	Top Cover	65	Y432020-3/18	Bolt
24	Y432020-1/25	Snap Ring	66	Y432020-3/19	Spring Lid
25	Y432020-1/26	O-ring	67	Y432020-3/20	Copper Washer
26	Y432020-1/27	Bolt	68	Y432020-3/21	Valve Assy.
27	Y432020-1/28	Air Valve	69	Y432020-3/22	Nylon Gasket
28	Y432020-1/29	Air Filter	70	Y432020-3/23	Nut
29	Y432020-1/30	O-ring	71	Y432020-3/24	Lock Washer
30	Y432020-1/31	Washer	72	Y432020-3/25	Flat Washer
31	Y432020-1/32	Air Hose	73	Y432020-3/26	Screw
32	Y432020-2/1	Oil Tank Assy.			
33	Y432020-2/2	Oil Filler Plug			
34	Y432020-2/4	Snap Ring			
35	Y432020-2/5	Washer	PU	Y432020-AMRK	Repair Kit For Air Motor
36	Y432020-2/6	O-ring	RK	Y432020-PURK	Repair Kit For Power Unit
37	Y432020-2/7	Washer			
38	Y432020-2/8	Piston Ring			
39	Y432020-2/9	Ram Assy.			
40	Y432020-2/12	Washer			
41	Y432020-2/13	O-ring			
42	Y432020-2/14	Snap Ring			



Y432003

Pos.	Art. No.	Description	Pos.	Art. No.	Description
1	Y432003-1/0	Air Motor Assy.	45	Y432003-2/17	Spring
2	Y432003-1/3	Pump Cylinder	46	Y432003-2/18	Pressure Valve
3	Y432003-1/4	Y-seal	47	Y432003-2/19	O-ring
4	Y432003-1/5	Nylon Gasket	48	Y432003-2/20	Bolt
5	Y432003-1/6	Copper Washer	49	Y432003-2/21	Steel Ball
6	Y432003-1/7	Nut	50	Y432003-2/22	Release Valve Assy.
7	Y432003-1/8	Bolt	51	Y432003-3/3	Pump Cylinder
8	Y432003-1/9	Base Cover	52	Y432003-3/4	O-ring
9	Y432003-1/10	Steel Ball	53	Y432003-3/5	Washer
10	Y432003-1/11	Air Pump Housing	54	Y432003-3/6	Dustproof Ring
11	Y432003-1/12	Nut	55	Y432003-3/7	Pump Piston
12	Y432003-1/13	Spring	56	Y432003-3/8	Pin
13	Y432003-1/14	Air Pump Plunger	57	Y432003-3/9	Pin
14	Y432003-1/15	Air Piston Base	58	Y432003-3/11	Link
15	Y432003-1/16	O-ring	59	Y432003-3/12	Cotter Pin
16	Y432003-1/17	Air Shuttle Valve	60	Y432003-3/13	Handle Socket
17	Y432003-1/18	O-ring	61	Y432003-3/14	Front Handle
18	Y432003-1/19	Air Piston	62	Y432003-3/15	Rear Handle
19	Y432003-1/20	Bolt	63	Y432003-3/16	Nut
20	Y432003-1/21	Shuttle Valve Seal	64	Y432003-3/17	Spring
21	Y432003-1/22	O-ring	65	Y432003-3/18	Bolt
22	Y432003-1/23	O-ring	66	Y432003-3/19	Spring Lid
23	Y432003-1/24	Top Cover	67	Y432003-3/20	Copper Washer
24	Y432003-1/25	Snap Ring	68	Y432003-3/21	Valve Assy.
25	Y432003-1/26	O-ring	69	Y432003-3/22	Nylon Gasket
26	Y432003-1/27	Bolt	70	Y432003-3/23	Nut
27	Y432003-1/28	Air Valve	71	Y432003-3/24	Lock Washer
28	Y432003-1/29	Air Filter	72	Y432003-3/25	Flat Washer
29	Y432003-1/30	O-ring	73	Y432003-3/26	Screw
30	Y432003-1/31	Washer	74	Y432003-4/1	Snap ring
31	Y432003-1/32	Air Hose Assy.	75	Y432003-4/2	Washer
32	Y432003-2/1	Oil Tank Assy.	76	Y432003-4/3	Wheel
33	Y432003-2/2	Oil Filler Plug	77	Y432003-4/4	Bracket
34	Y432003-2/4	Snap Ring	78	Y432003-4/5	Convey rod
35	Y432003-2/5	Washer	79	Y432003-4/6	Snap ring
36	Y432003-2/6	O-ring	80	Y432003-4/7	Fix block
37	Y432003-2/7	Washer	81	Y432003-4/8	Release knob
38	Y432003-2/8	Piston Ring	82	Y432003-4/9	Rubber grip
39	Y432003-2/9	Ram Assy.	83	Y432003-4/10	Towing handle
40	Y432003-2/12	Washer	84	Y432003-4/11	Rod joint
41	Y432003-2/13	O-ring			
42	Y432003-2/14	Snap Ring			
43	Y432003-2/15	Steel Ball	PU	Y432003-AMRK	Repair Kit For Air Motor
44	Y432003-2/16	Stud	RK	Y432003-PURK	Repair Kit For Power Unit