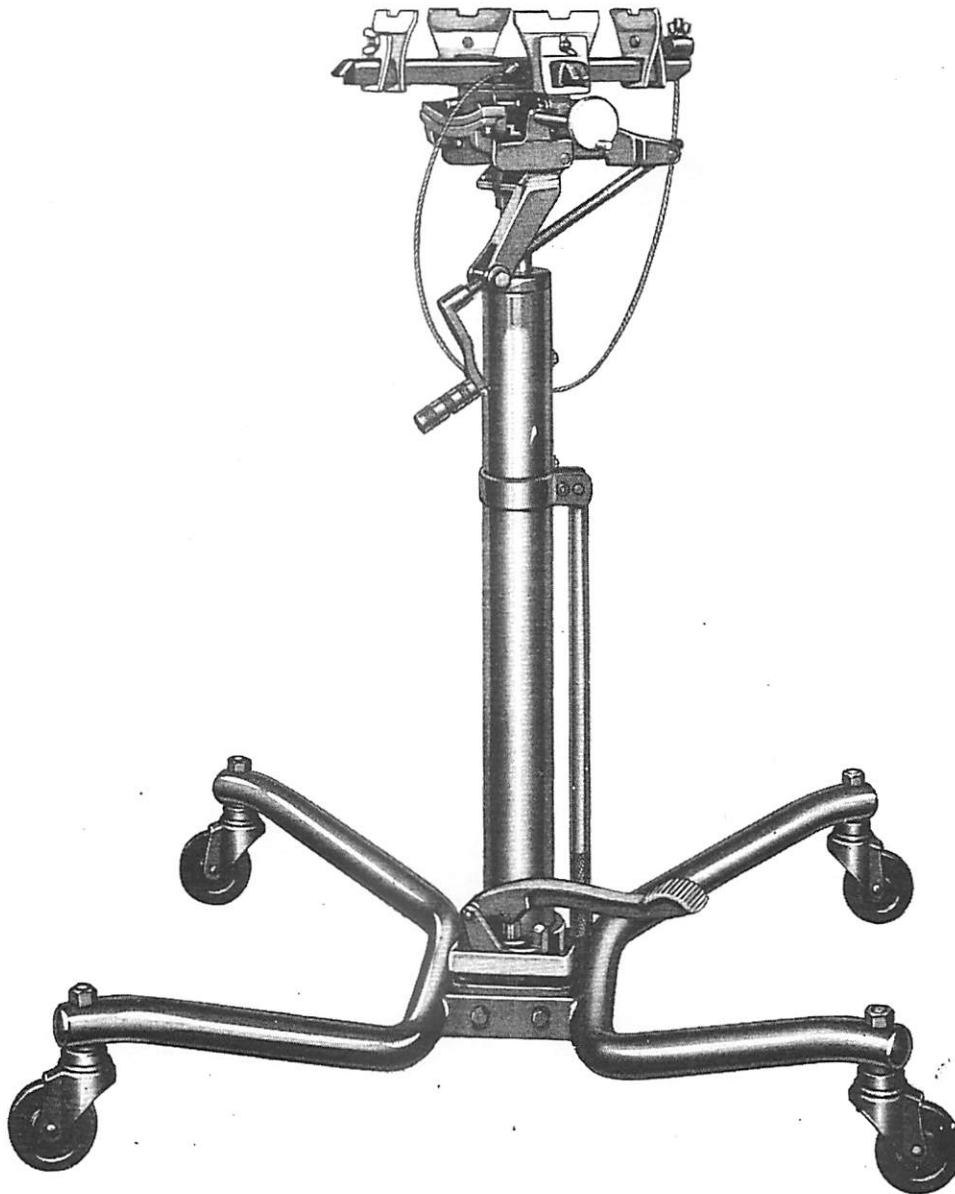


# WALKER SERVICE DIVISION

## JACK PARTS MANUAL

MODEL J-48

Series "A-B-C"



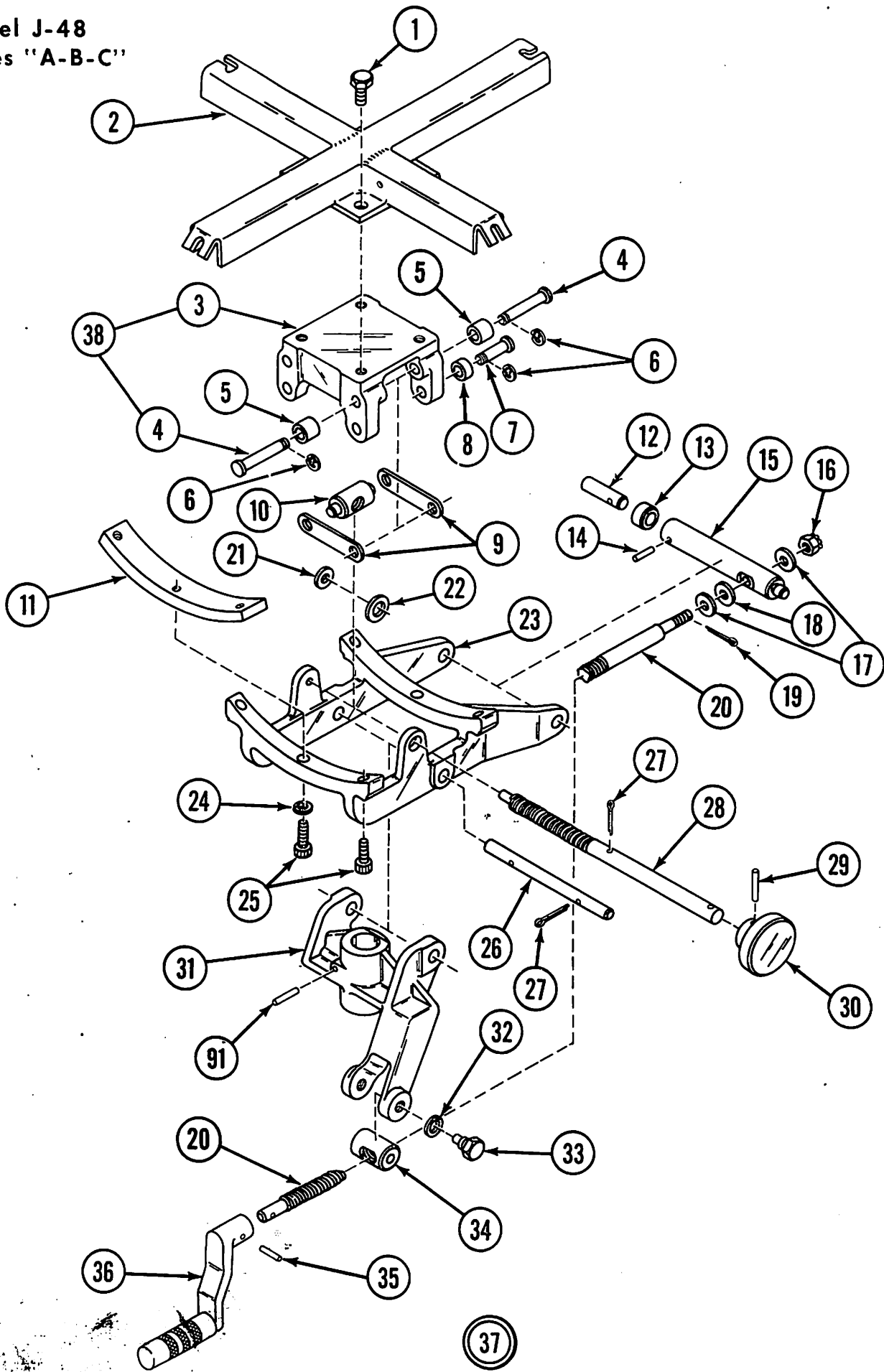
### WALKER SERVICE

We have Factory-owned BRANCHES AND AUTHORIZED SERVICE DEPOTS located in the principal cities of the United States and Canada. They are operated by FACTORY TRAINED STAFFS and carry a comprehensive stock of REPAIR PARTS. Before returning Jacks for service, please contact the Factory or your Walker DISTRIBUTOR for location of Branch or Service Depot nearest you. Walker Branches will be listed under Walker Marketing Corporation, and your orders should be directed accordingly.

**NOTE: WALKER WHOLESALE DISTRIBUTORS & DEALERS** - When ordering repair parts from Factory or Factory Branches - address orders to WALKER MARKETING CORPORATION.

**WALKER MANUFACTURING COMPANY** GENERAL OFFICE: RACINE, WISCONSIN  
FACTORY SERVICE BRANCHES: - ATLANTA, GEORGIA - CLEVELAND, OHIO - DALLAS, TEXAS - KANSAS CITY, MISSOURI - PHILADELPHIA, PENNA. WALKER BRANCHES ARE LISTED - WALKER MARKETING CORP. - ADDRESS ACCORDINGLY.

Model J-48  
Series "A-B-C"



ORDER BY PART NUMBER, NOT BY CODE NUMBER  
SEE BACK PAGE FOR COMPLETE NUMERICAL LISTING

Model J-48  
Series "A-B-C"

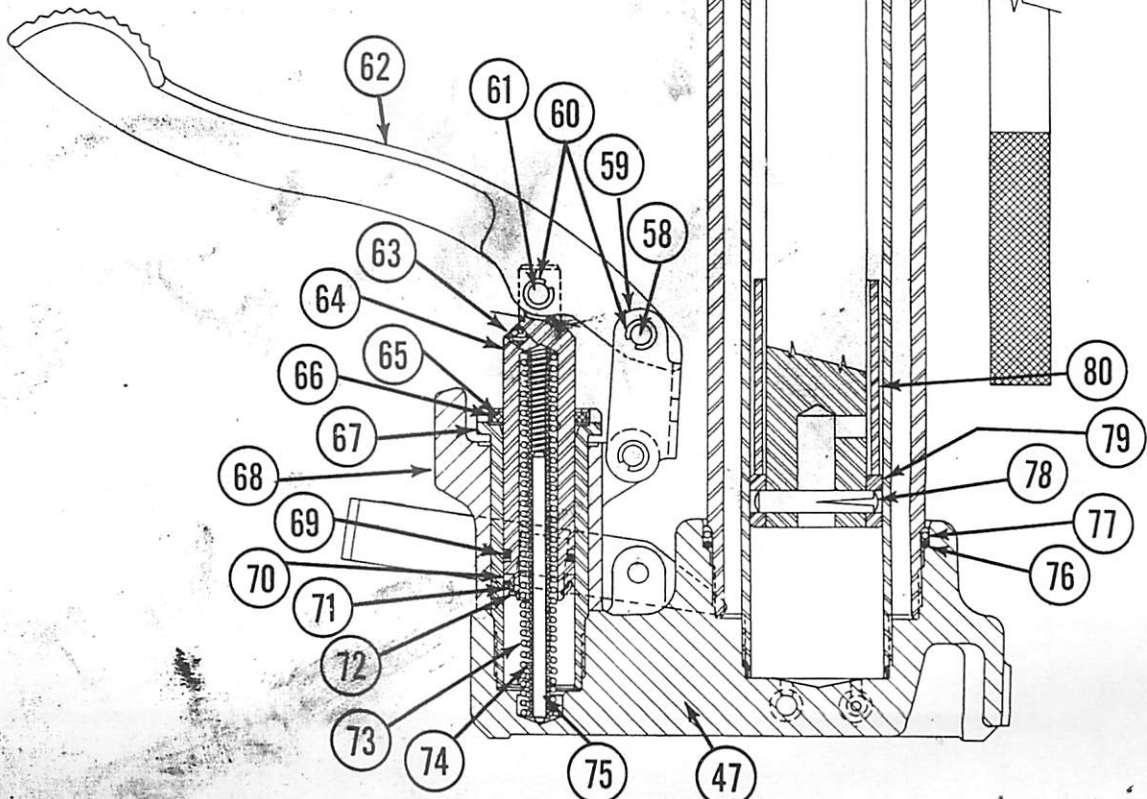
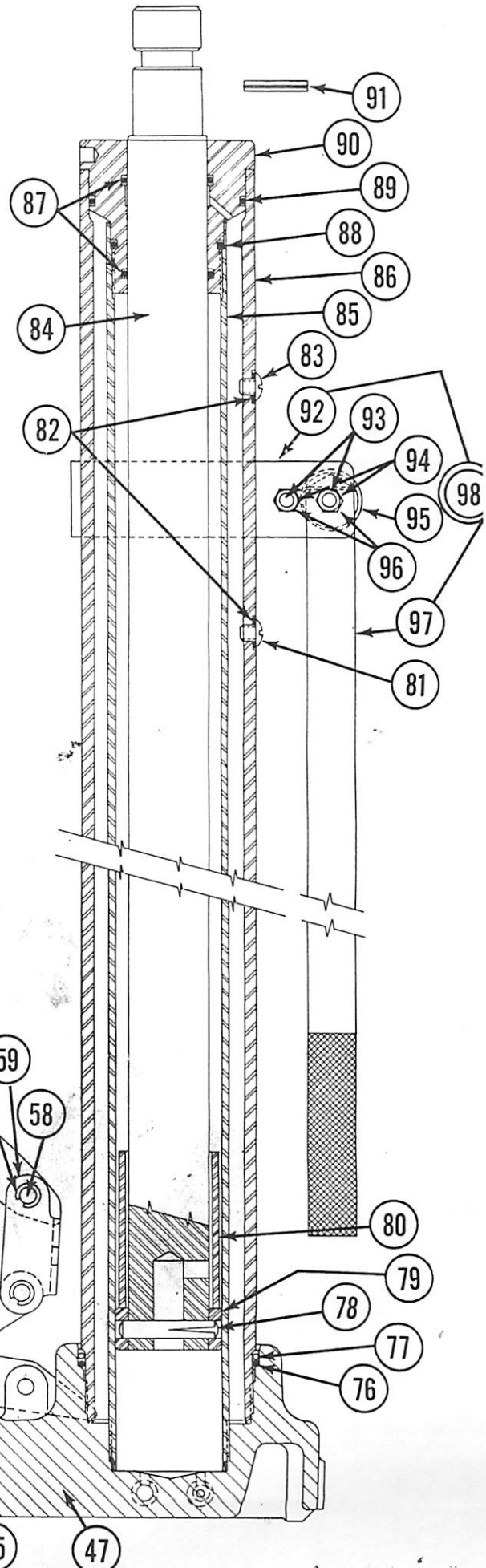
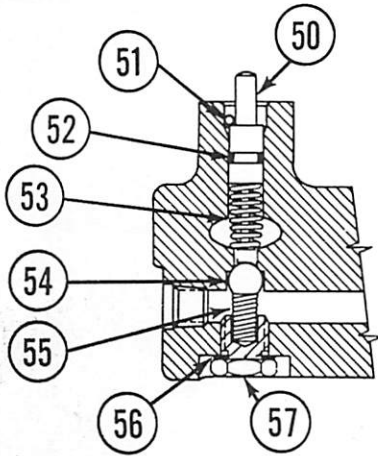
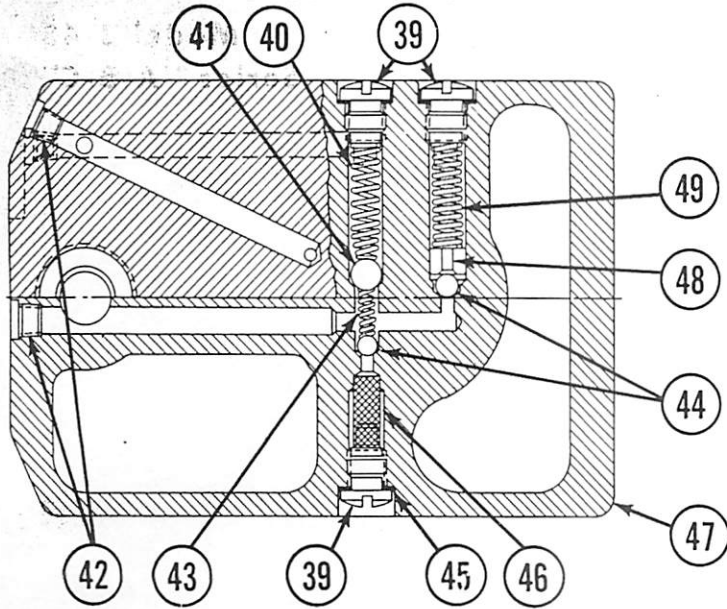
Code No.	Model J-48			Description
	Series A	Series B	Series C	
1	212650	212650	212650	Cap Screw (4 Required)
2	214094	214094	214094	Lifting Head
3	214010	214010	214010	Cradle
4	**	**	220753	Pin - Top Roller (4 Required)
5	214071	214071	214071	Top Roller (4 Required)
6	204444	204444	220754	Cotter Pin (Series AB) "E" Ring (Series C)
7	**	**	220752	Pin - Bottom Roller (4 Required)
8	214072	214072	214072	Bottom Roller (4 Required)
9	214119	214119	214119	Link (2 Required)
10	214075	214075	214075	Nut - Heeling Screw
11	**	**	218839	Rail (2 Required)
12	214471	214471	214471	Pin Trunnion Spacer
13	214470	214470	214470	Trunnion Spacer
14	214538	214538	214538	Groove Pin
15	214472	214472	214472	Trunnion
16	214542	214542	214542	Nut - Castle
17	204279	204279	204279	Washer
18	214610	214610	214610	Thrust Bearing - Oilite
19	204428	204428	204428	Cotter Pin
20	214468	214468	214468	Screw - Tilting
21	204303	204303	204303	Washer
22	204272	204272	204272	Washer
23	**	**	218838	Lifting Frame
24	201090	201090	201090	Lockwasher (4 Required Series AB) (2 Required Series C)
25	220858	220858	220858	Fillister Head Screw - Rails (6 Required)
25B	201898	201898		Cap Screw - Rails (2 Required)
26	214561	214561	214561	Pin - Pivot
27	204446	204446	204446	Cotter Pin (2 Required)
28	214074	214074	214074	Screw - Heeling
29	214447	214447	214447	Groove Pin
30	220756	220756	221565	Hand Knob
31	214467	214467	214467	Adaptor Frame
32	209970	209970	209970	Lockwasher (2 Required)
33	214473	214473	214473	Screw Pivot (2 Required)
34	214469	214469	214469	Nut - Tilting Screw
35	214538	214538	214538	Groove Pin
36	214476	214476	214476	Crank Assembly
37	**	**	218842	Head Assembly
38	214607	214607	220677	Cradle Pin & Roller Assembly

\*No longer available - Order current Series "C" part.

\*\*No longer available - Order part number 218842

ORDER BY PART NUMBER, NOT BY CODE NUMBER  
SEE BACK PAGE FOR COMPLETE NUMERICAL LISTING.

Model J-48 Series "A-B-C"



ORDER BY PART NUMBER, NOT BY CODE NUMBER  
SEE BACK PAGE FOR COMPLETE NUMERICAL LISTING

**Model J-48**  
**Series "A-B-C"**

Code No.	Model J-48			Description
	Series A	Series B	Series C	
39	214529	214529	214529	Plug Pressure (3 Required) Spring Valve Plug (3 Required) Spring Suction
40	217038	217038	217038	
41	See Note 2	See Note 2	See Note 2	
42	210311	210311	210311	
43	216647	216647	216647	
44	See Note 2	See Note 2	See Note 2	Valve (2 Required) Copper Gasket (3 Required) Intake Screen Base Spacer
45	See Note 2	See Note 2	See Note 2	
46	214055	214055	214055	
47	See Note 1	See Note 1	See Note 1	
48	214525	214525	214525	
49	214565	214565	214565	Spring Release Stem Groove Pin "O" Ring Spring
50	214564	214564	214564	
51	221276	221276	221276	
52	See Note 2	See Note 2	See Note 2	
53	214559	214559	214559	
54	See Note 2	See Note 2	See Note 2	Valve Spring Gasket Plug Pin (2 Required)
55	G-21141	G-21141	G-21141	
56	See Note 2	See Note 2	See Note 2	
57	214562	214562	214562	
58	214518	214518	214518	
59	216661	216661	216661	Link Washer (3 Required) Pin Foot Pedal Pipe Plug
60	209935	209935	209935	
61	216664	216664	216664	
62	216660	216660	216660	
63	216566	216566	216566	
64	See Note 3	See Note 3	See Note 3	Pump Piston Wiper Ring Ring - Retainer Cylinder - Pump Swivel Padal
65	See Note 2	See Note 2	See Note 2	
66	217122	217122	217122	
67	See Note 3	See Note 3	See Note 3	
68	216663	216663	216663	
69	See Note 2	See Note 2	See Note 2	"O" Ring Rubber Cup Cup Retainer Ring Retainer Spring - Inner
70	See Note 2	See Note 2	See Note 2	
71	212988	212988	212988	
72	214557	214557	214557	
73	216655	216655	216655	
74	216654	216654	216654	Spring - Outer Guide Pin "O" Ring Retainer - "O" Ring Groove Pin
75	216656	216656	216656	
76	See Note 2	See Note 2	See Note 2	
77	217119	217119	217119	
78	214558	214558	214558	
79	214523	214523	214523	Guide - Ram Spacer - Ram Filler Screw Gasket Air Vent Screw
80	216649	216649	216649	
81	212540	212540	212540	
82	See Note 2	See Note 2	See Note 2	
83	212562	212562	212562	
84	214512	214512	214512	Ram Cylinder - Ram Oil Tank "O" Ring "O" Ring
85	216650	216650	216650	
86	216651	216651	216651	
87	See Note 2	See Note 2	See Note 2	
88	See Note 2	See Note 2	See Note 2	
89	See Note 2	See Note 2	See Note 2	"O" Ring Tank Nut Groove Pin Strap Hex Nut (2 Required)
90	216652	216652	216652	
91	214537	214537	214537	
92	217045	217045	217045	
93	203342	203342	203342	
94	201544	201544	201544	Bolt (2 Required) Trunnion Lockwasher (2 Required) Handle Steering Handle Assembly
95	217044	217044	217044	
96	201086	201086	201086	
97	217043	217043	217043	
98	217049	217049	217049	

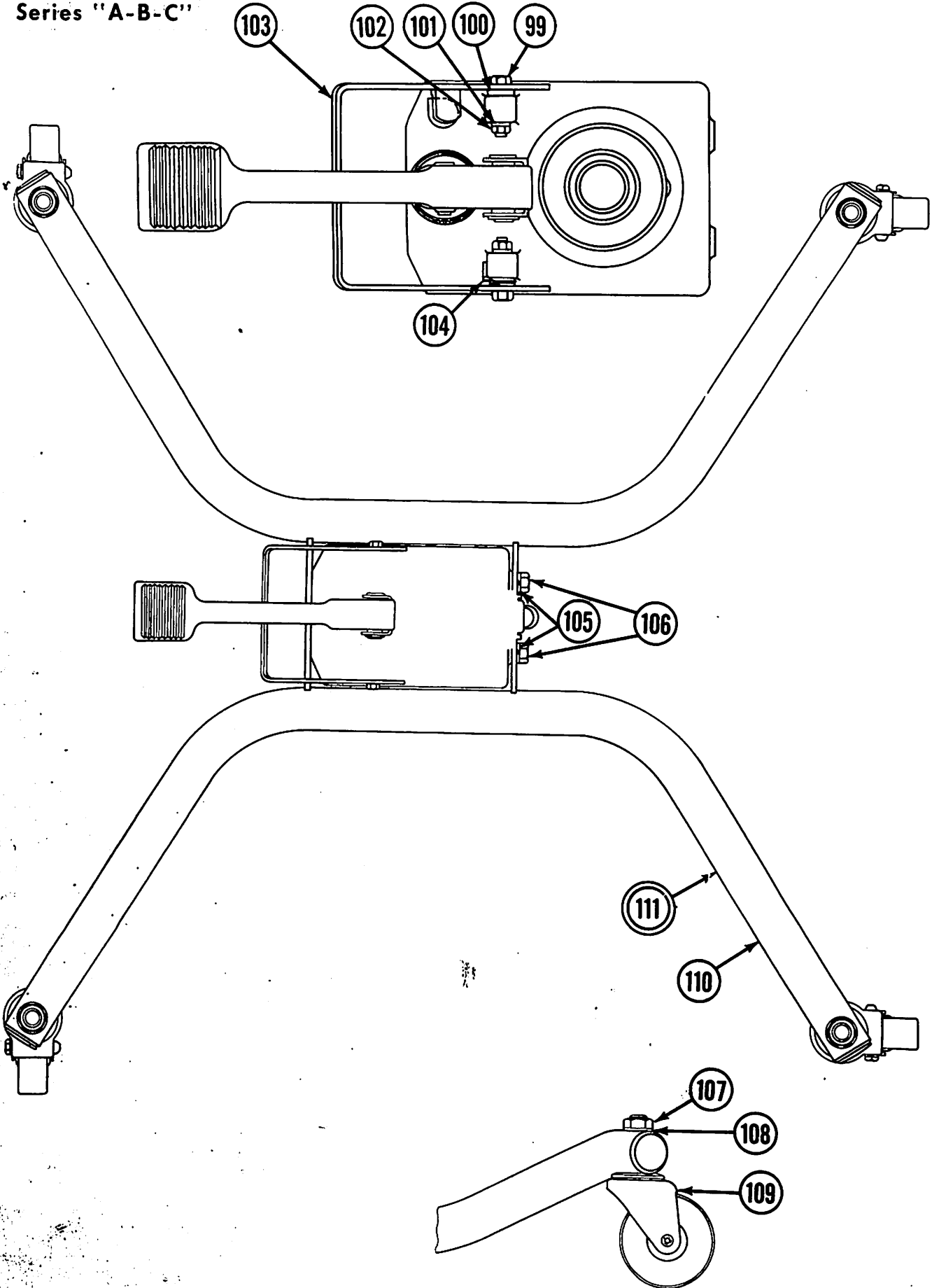
Note 1 - Base not available. Contact the factory regarding Hyd. Unit Assemblies.

Note 2 - Repair Kit item - Order Repair Kit No. URK-85.

Note 3 - Replace by using 219842 and 219843.

**ORDER BY PART NUMBER, NOT BY CODE NUMBER**  
**SEE BACK PAGE FOR COMPLETE NUMERICAL LISTING**

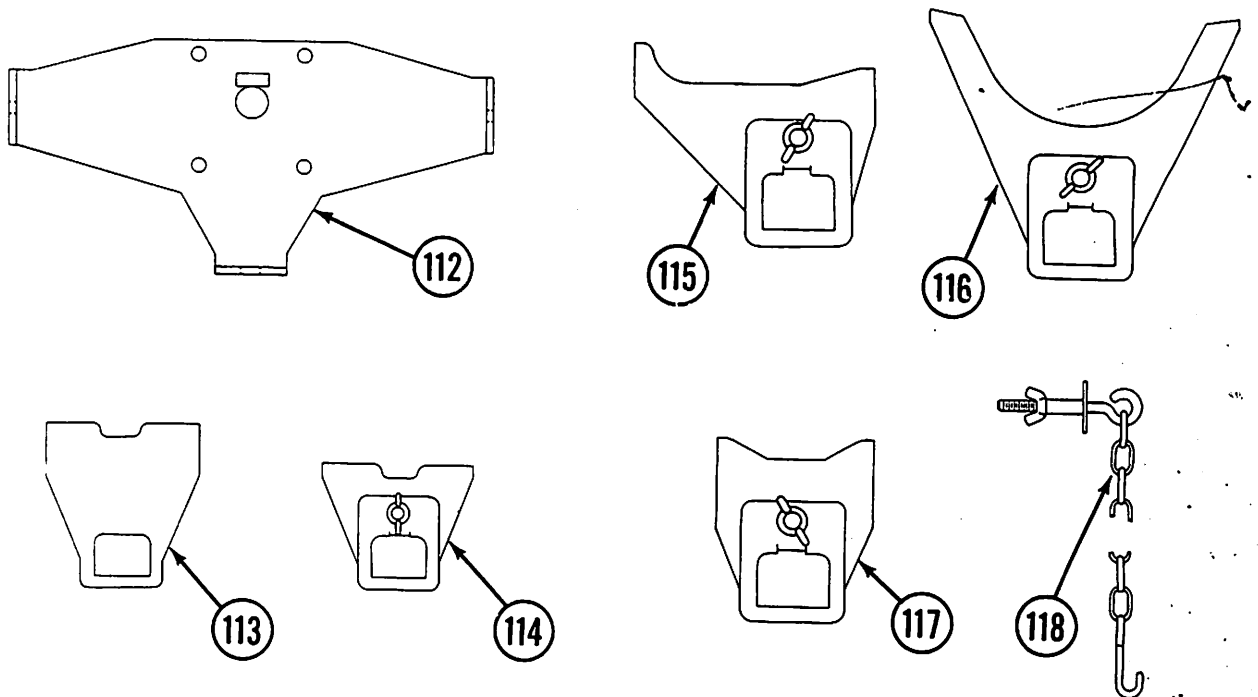
**Model J-48  
Series "A-B-C"**



**ORDER BY PART NUMBER, NOT BY CODE NUMBER  
SEE BACK PAGE FOR COMPLETE NUMERICAL LISTING**

Model J-48  
Series "A-B-C"

Code No.	Model J-48			Description
	Series A	Series B	Series C	
99	212597	212597	212597	Cap Screw (2 Required)
100	214530	214530	214530	Coller - Release Lever (2 Required)
101	201772	201772	201772	Washer (2 Required)
102	207167	207167	203342	Nut - Hex (2 Required)
103	214514	214514	214514	Release Lever Assembly
104	214513	214513	214513	Spring - Release Lever
105	209970	209970	209970	Lockwasher (4 Required)
106	212673	212673	212673	Cap Screw (4 Required)
107	217630	217630	217630	Hex nut (4 Required)
108	201779	201779	201779	Lockwasher (4 Required)
109	214550	214550	214550	Caster (4 Required)
110	220957	220957	220957	Leg
111	214532	214532	214532	Leg Assembly



Code No.	Model J-48			Description
	Series A	Series B	Series C	
112	**	**	220215	Adaptor Assembly
113	**	**	220194	Pick Up Block Assembly
114	214442	214442	214442	Pick Up Block Assembly
115	214444	214444	214444	Pick Up Block Assembly
116	214443	214443	214443	Pick Up Block Assembly
117	214445	214445	214445	Pick Up Block Assembly
118	**	**	220860	Chain Assembly

\*No longer available - Order current Series "C" part.  
\*\*No longer available - Order part number 218842

ORDER BY PART NUMBER, NOT BY CODE NUMBER  
SEE BACK PAGE FOR COMPLETE NUMERICAL LISTING

NUMERICAL LISTING OF PARTS

Part No.	Code No.	Part No.	Code No.	Part No.	Code No.
G-21141	55	214445	117	216649	80
201086	96	214447	29	216650	85
201090	24	214467	31	216651	86
201544	94	214468	20	216652	90
201772	101	214469	34	216654	73
201779	108	214470	13	216655	74
201898	25B	214471	12	216656	75
203342	93-102	214472	15	216660	62
204272	22	214473	33	216661	59
204279	17	214476	36	216663	68
204303	21	214512	84	216664	61
204428	19	214513	104	217038	40
204444	6	214514	103	217043	97
204446	27	214518	58	217044	95
209935	60	214523	79	217045	92
209970	32 & 105	214525	48	217049	98
210311	42	214529	39	217119	77
212540	81	214530	100	217122	66
212562	83	214532	111	217630	107
212597	99	214537	91	218838	23
212650	1	214538	35 & 14	218839	11
212673	106	214542	16	218842	37
212988	71	214550	109	220194	113
214010	3	214557	72	220215	112
214055	46	214558	78	220677	38
214071	5	214559	53	220752	7
214072	8	214561	26	220753	4
214074	28	214562	57	220754	6
214075	10	214564	50	220756	30
214094	2	214565	49	220858	25
214119	9	214607	38	220860	118
214442	114	214610	18	220957	110
214443	116	216566	63	221276	51
214444	115	216647	43	221565	30