

WALKER®

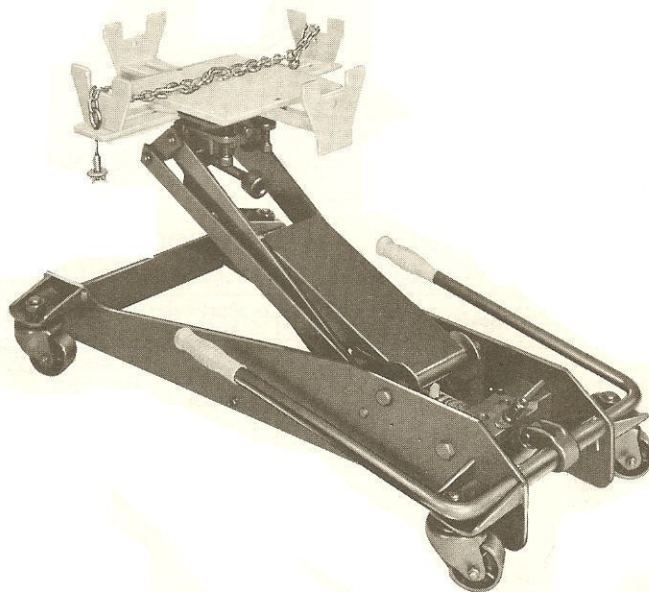
**SERVICE
DIVISION**

Jack Parts Sheet

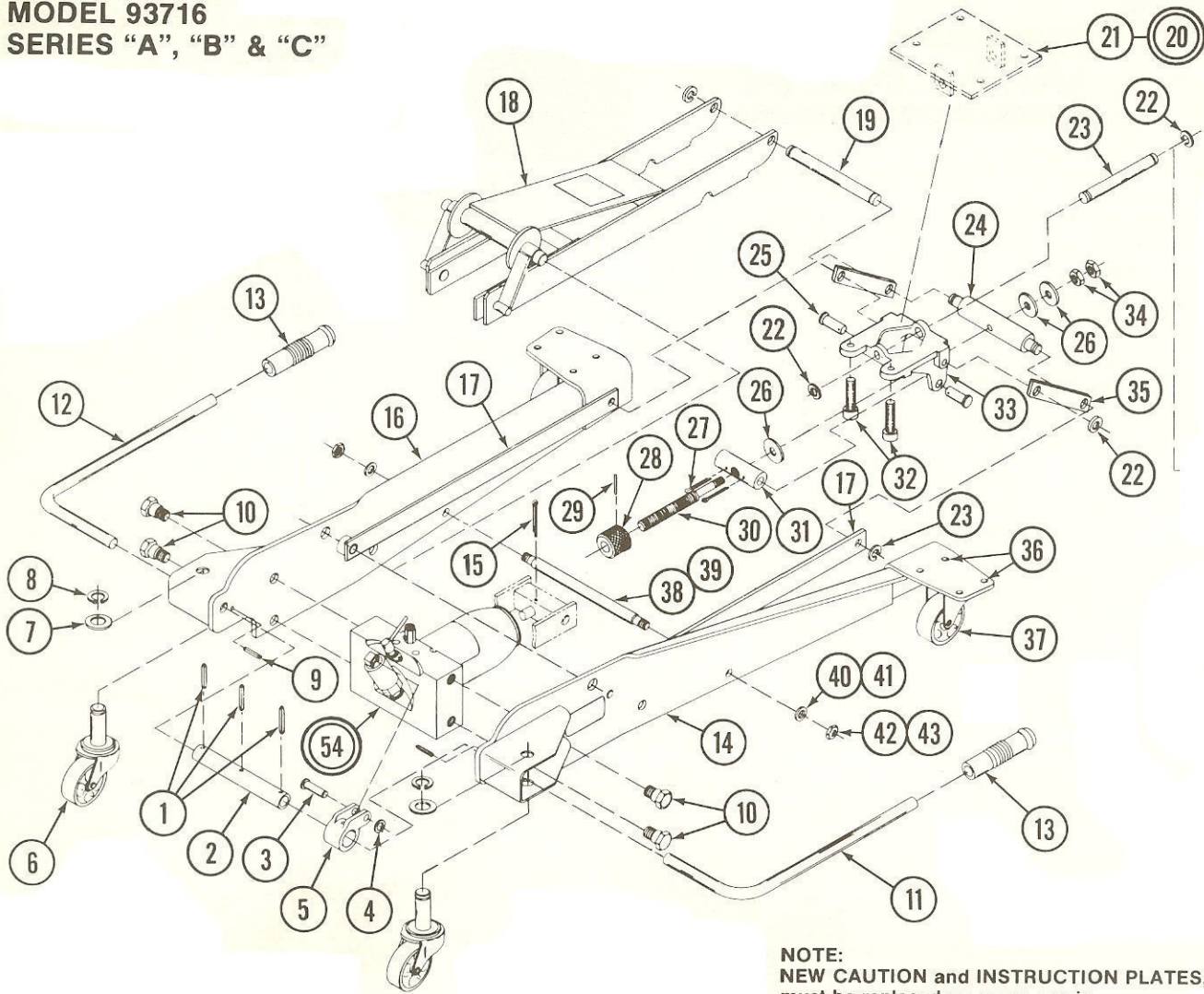
**MODEL 93716
SERIES "A", "B" & "C"**

**1/2 TON CAPACITY
HYDRAULIC TRANSMISSION JACK**

OBSOLETE: SOME PARTS STILL AVAILABLE



MODEL 93716
SERIES "A", "B" & "C"



NOTE:
NEW CAUTION and INSTRUCTION PLATES,
must be replaced on every repair.

ORDER BY PART NUMBER, NOT BY CODE NUMBER
SEE BACK PAGE FOR COMPLETE NUMERICAL LISTING

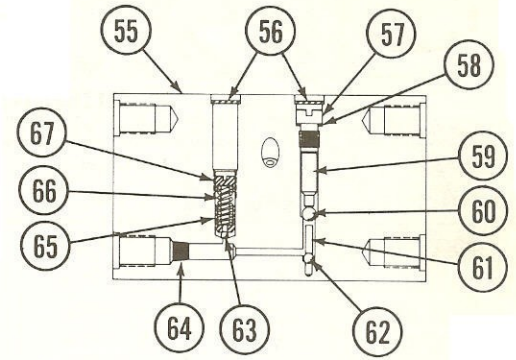
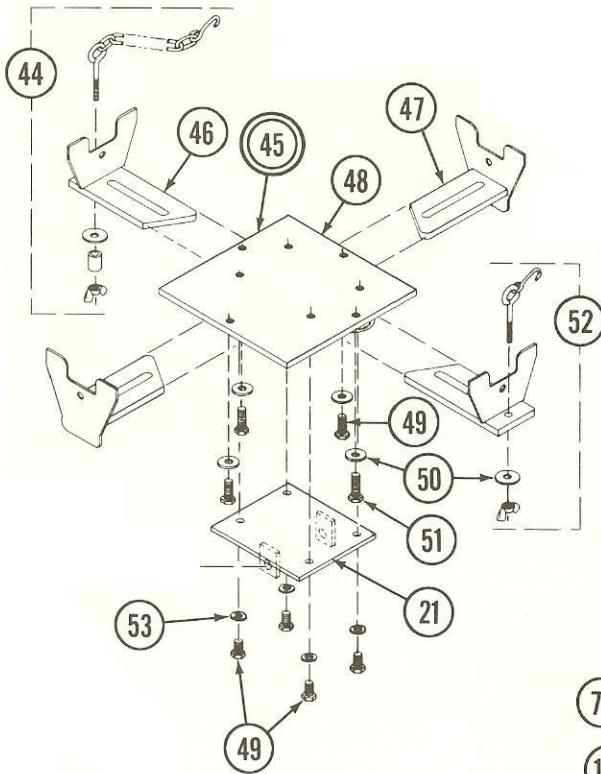
Code No.	Part No.	Description	Series	No. Req'd.	Code No.	Part No.	Description	Series	No. Req'd.
1	219531	Roll Pin	A,B & C	3	28	218962	Knob	A,B & C	1
2	227579	Tube - Handle Socket	A,B & C	1	29	217782	Roll Pin	A,B & C	1
3	228247*	Pin	A,B & C	1	30	227718	Tilt Screw	A,B & C	1
4	220018*	Retainer Ring	A,B & C	1	31	227724	Pivot Nut	A,B & C	1
5	227576	Handle Socket	A,B & C	1	32	227726	Tilt Screw	A,B & C	2
6	227725	Caster	A,B & C	2	33	227721	Cradle	A,B & C	1
7	204324	Washer	A,B & C	2	34	203275	Nut	A,B & C	2
8	214557	Retainer Ring	A,B & C	2	35	227720	Link	A,B & C	2
9	217874	Roll Pin	A,B & C	2	36	202575	Rivet	A,B & C	8
10	226364	Shoulder Bolt	A,B & C	4	37	214145	Caster	A,B & C	2
11	227723	Handle - Pump, R.H.	A,B & C	1	38	227714	Pin - Spacer	A	1
12	228789	Handle - Pump, L.H.	A,B & C	1	39	228570	Pin - Spacer	B & C	1
13	221365	Handle Grip	A,B & C	2	40	201789	Lock Washer	A	2
14	NOTE 1	Side Plate Assy., R.H.	A,B & C	1	41	226738	Lock Washer	B & C	2
15	204511	Cotter Pin	A,B & C	1	42	203275	Nut	A	2
16	NOTE 1	Side Plate Assy., L.H.	A,B & C	1	43	203265	Nut	B & C	2
17	227765	Stud & Link Assy.	A,B & C	2	44	220860	Chain & Terminal Assy.	A,B & C	1
18	227682	Bellcrank Assy.	A,B & C	1	45	227731	Top Plate & Blade Assy.	A,B & C	1
19	227719	Lower Cradle Pin	A,B & C	1	46	227706	Arm & Blade Assy. - Long	A,B & C	2
20	228002	Cradle & Tilt Pad Assy.	A,B & C	1	47	227709	Arm & Blade Assy. - Short	A,B & C	2
21	227692	Tilt Pad & Block	A,B & C	1	48	227695	Top Plate Assy.	A,B & C	1
22	201801	Retaining Ring	A,B & C	6	49	212650	Bolt	A,B & C	6
23	224889	Pin	A,B & C	1	50	204279	Washer	A,B & C	4
24	227715	Tilt Pin	A,B & C	1	51	212652	Bolt	A,B & C	2
25	214599	Pin	A,B & C	2	52	227699	Hook Assy.	A,B & C	1
26	227717	Washer	A,B & C	3	53	201099	Lock Washer	A,B & C	4
27	227766	Cotter Pin	A,B & C	2					

* - Order as set.

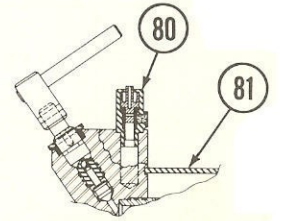
NOTE 1 - When Side Plate replacement is required, order as matched pair for series "D" plus casters, etc.

NOTE 2 - When complete hydraulic unit is required, contact nearest factory branch or service depot for information.

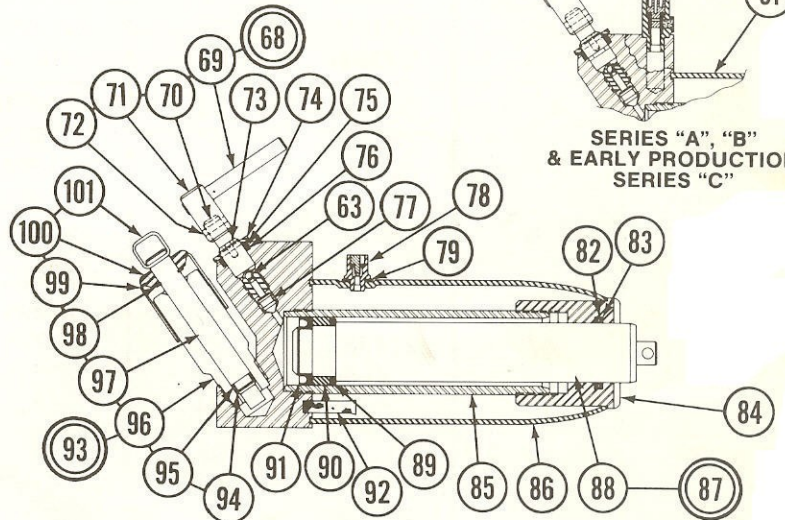
MODEL 93716
SERIES "A", "B" & "C"



54 HYDRAULIC UNIT ASSEMBLY



SERIES "A", "B" & EARLY PRODUCTION SERIES "C"



LATE PRODUCTION OF SERIES "C"

NOTE:
NEW CAUTION and INSTRUCTION PLATES,
must be replaced on every repair.

ORDER BY PART NUMBER, NOT BY CODE NUMBER
SEE BACK PAGE FOR COMPLETE NUMERICAL LISTING

Code No.	Part No.	Description	Series	No. Req'd.	Code No.	Part No.	Description	Series	No. Req'd.
54	NOTE 2	Hydraulic Unit Assy.	A,B & C	1	78	231638	Filler/Vent Plug	C	1
55	NOTE 3	Unit Block	A,B & C	1	79	200003	Gasket	C	1
56	201733	Expansion Plug	A,B & C	2	80	232633	Filler/Vent Plug	A & B	1
57	211013	Pressure Plug	A,B & C	1	81	NOTE 4	Oil Tank	A & B	1
58	204842	Gasket	A,B & C	1	82	221748	Quad Ring	A,B & C	1
59	211014	Spacer - Discharge	A,B & C	1	83	221747***	Back-Up Washer	A,B & C	1
60	203201	Ball - 5/16"	A,B & C	1	84	225516	Tank Nut	A,B & C	1
61	226330	Spacer - Suction	A,B & C	1	85	231092	Cylinder	A,B & C	1
62	203198	Ball - 7/32"	A,B & C	1	86	231641	Oil Tank	C	1
63	203196	Ball - 5/32"	A,B & C	2	87	225518	Ram Assy.	A,B & C	1
64	210311	Plug	A,B & C	1	88	225517	Ram	A,B & C	1
65	226376**	Adapter	A,B & C	1	89	224867	Back-Up Washer	A,B & C	1
66	226375**	Spring - Safety Valve	A,B & C	1	90	224760	Heel Plate	A,B & C	1
67	226373**	Adjusting Nut	A,B & C	1	91	227919	"U" Cup	A,B & C	1
68	232629	Release Stem Assy.	A,B & C	1	92	221318	Screen	A,B & C	1
69	218989	Roll Pin	A,B & C	1	93	227670	Pump Assy.	A,B & C	1
70	232630	Release Stem	A,B & C	1	94	216143	"O" Ring	A,B & C	1
71	227565	Coupling	A,B & C	1	95	227673	Washer	A,B & C	1
72	227566	Roll Pin	A,B & C	1	96	227671	Cylinder	A,B & C	1
73	222940	Screw - Retainer Plate	A,B & C	2	97	227672	Piston	A,B & C	1
74	218414	Retainer Plate	A,B & C	1	98	201801	Retaining Ring	A,B & C	1
75	212374	Washer	A,B & C	1	99	226357	Sleeve	A,B & C	1
76	212375	"O" Ring	A,B & C	1	100	227571	Grommet	A,B & C	1
77	224061	Release Valve	A,B & C	1	101	209910	Pump Clip	A,B & C	1

** - CAUTION—Special tools and testing equipment required for overload setting.

*** - Eliminated from "Late" Production. Use only when Tank Nut groove provides space.

NOTE 3 — Order P/N 232628 and matching parts for series "D". Must replace Oil Tank. Order P/N 231641 Oil Tank, P/N 231638 Filler/Vent Plug. Also order P/N 232630 Release Stem and P/N 216143 — "O" Ring.

NOTE 4 — Order P/N 231641 Oil Tank, add P/N 212540 Screw and P/N 200003 Gasket to seal Filler Hole.