

WALKER

SERVICE DIVISION

Jack Parts Sheet BODY-JAK™

MODEL 93535-C

PUMP, RAM & HOSE

93102-C PUMP

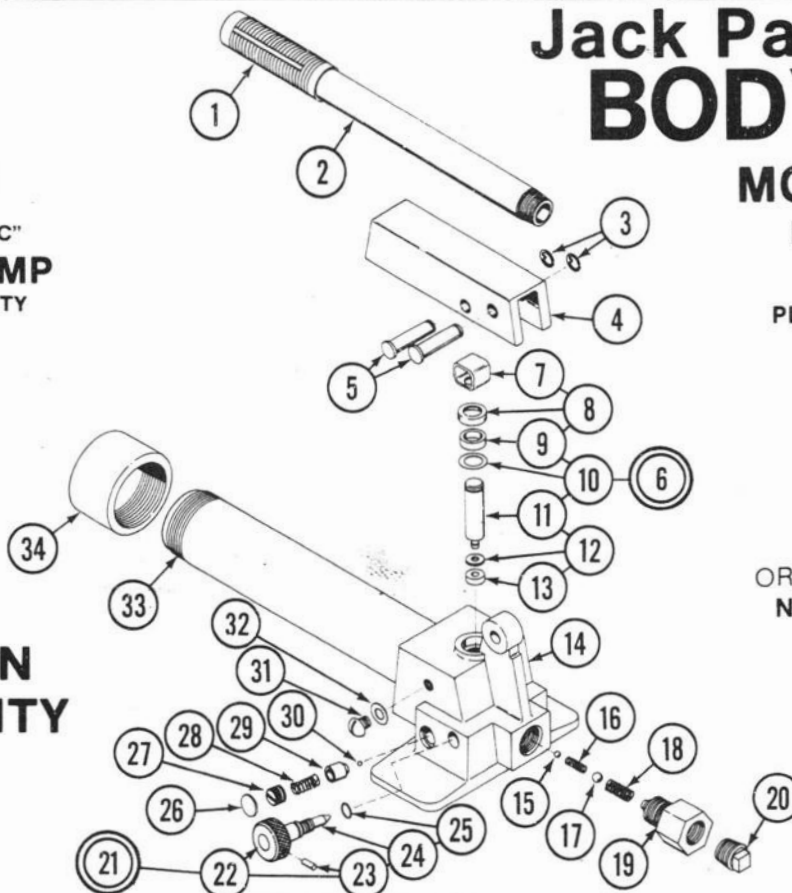
93111-C STD. RAM

PLUS—93110-C SHORT RAM

93108-B SPREADER*

93102 SERIES "C"
HAND PUMP
10 TON CAPACITY

**10 TON
CAPACITY**



*Can be used with 93101
and 93102 Pumps.

ORDER BY PART NUMBER,
NOT BY CODE NUMBER

Code No.	Part No.	Description	No. Req'd.	Code No.	Part No.	Description	No. Req'd.
1	230665	Handle Grip	1	18	222201	Spring	1
2	230676	Handle	1	19	230675	Plug	1
3	220018	Retaining Rings	2	20	230674	Pipe Plug	1
4	230656	Handle Socket	1	21	230650	Release Stem Assembly	1
5	230661	Pump & Fulcrum Pin	2	22	230653	Knob	1
6	226180	Pump Assembly	1	23	230651	Roll Pin	1
7	209910	Clip	1	24	230652	Stem	1
8	216258	Pump Cover	1	25	218776	'O'-Ring	1
9	213149	Pump Gland Packing	1	26	201733	Expansion Plug	1
10	204281	Washer	1	27	226373	Adjusting Screw - Safety Valve	1
11	226179	Pump Piston	1	28	226375	Spring	1
12	214161	Leather Washer	1	29	226376	Adapter	1
13	214154	"U"-Cup	1	30	203196	Ball (5/32)	1
14	230669	Base	1	31	212540	Filler Screw	1
15	203197	Ball (3/16)	1	32	200003	Gasket	1
16	217909	Spring	1	33	230673	Oil Tank	1
17	203201	Ball (5/16)	1	34	230671	End Cap	1

Items such as hoses, etc. are classified as accessories and are available through new equipment catalog only.

SERVICE

We have Factory-owned BRANCHES AND AUTHORIZED SERVICE DEPOTS located in the principal cities of the United States and Canada. They are operated by FACTORY TRAINED STAFFS and carry a comprehensive stock of REPAIR PARTS. Before returning Jacks for service, please contact the Factory or your Walker DISTRIBUTOR for location of Branch or Service Depot nearest you.

Walker Manufacturing GENERAL OFFICE: Racine, Wisconsin — MANUFACTURING PLANT AND SERVICE DEPARTMENT: Jonesboro, Arkansas — FACTORY SERVICE BRANCHES: Atlanta, Georgia — Cleveland, Ohio — Kansas City, Missouri — Philadelphia, Pennsylvania.

MODEL 93535-C

93102-C

93111-C

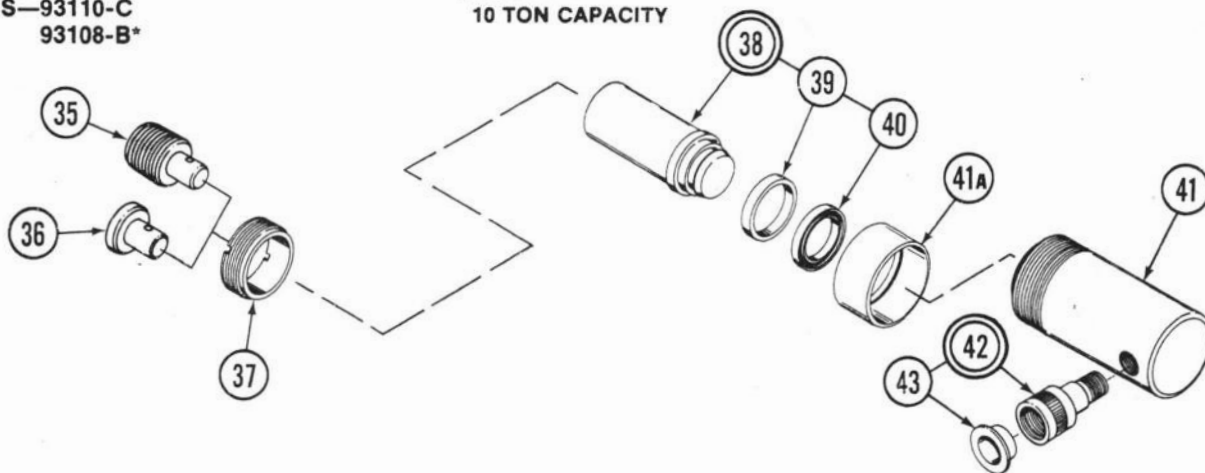
PLUS—93110-C

93108-B*

93110 SERIES "C"

SHORT RAM

10 TON CAPACITY

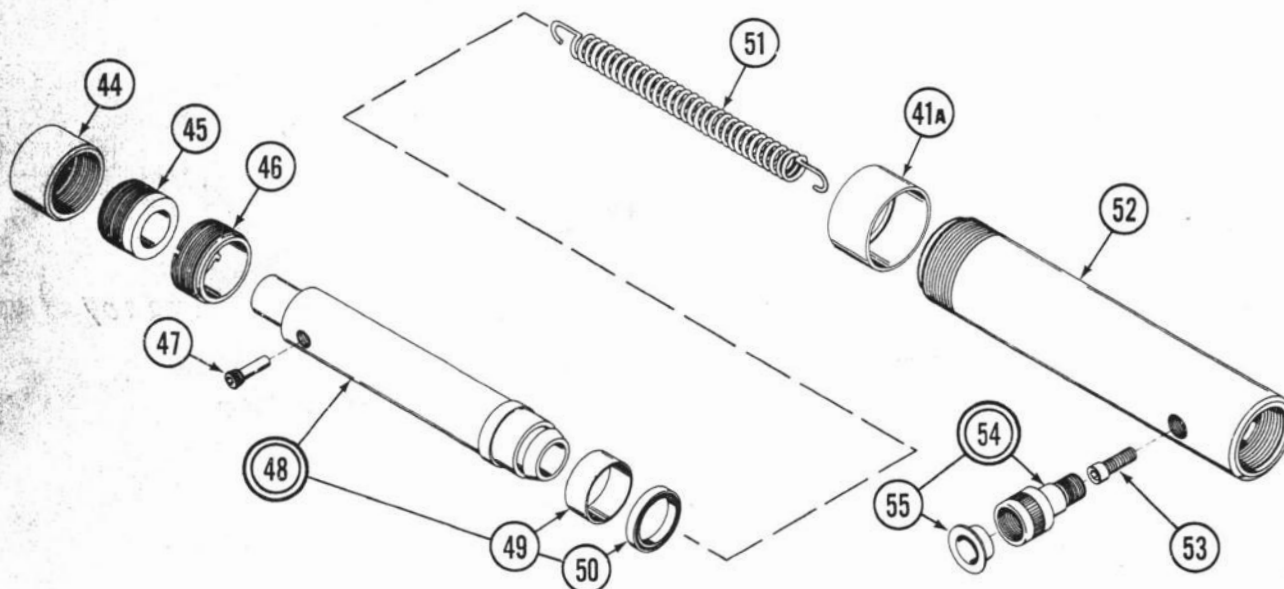


Code No.	Part No.	Description	No. Req'd.	Code No.	Part No.	Description	No. Req'd.
35	230727	Male Adapter	1	40	230733	"U"-Cup	1
36	230730	Lift Cap	1	41A	230737	Thread Protector	1
37	230735	Ram Nut	1	41	230736	Ram Housing	1
38	231807	Ram Assy.	1	42	93183	Ram Half Coupler**	1
39	230732	Heel Plate	1	43	230763	Dust Cap	1

93111 SERIES "C"

STANDARD RAM

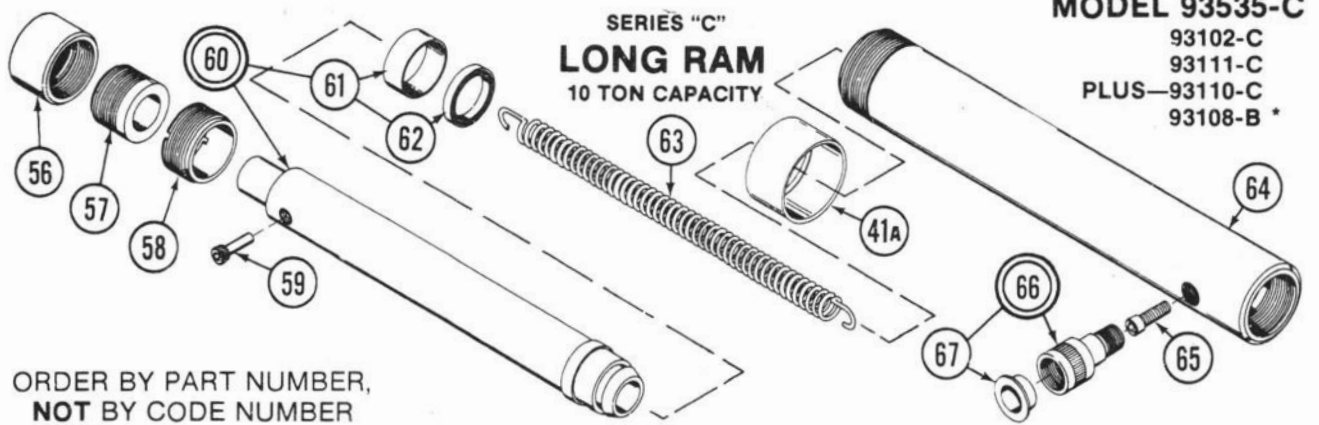
10 TON CAPACITY



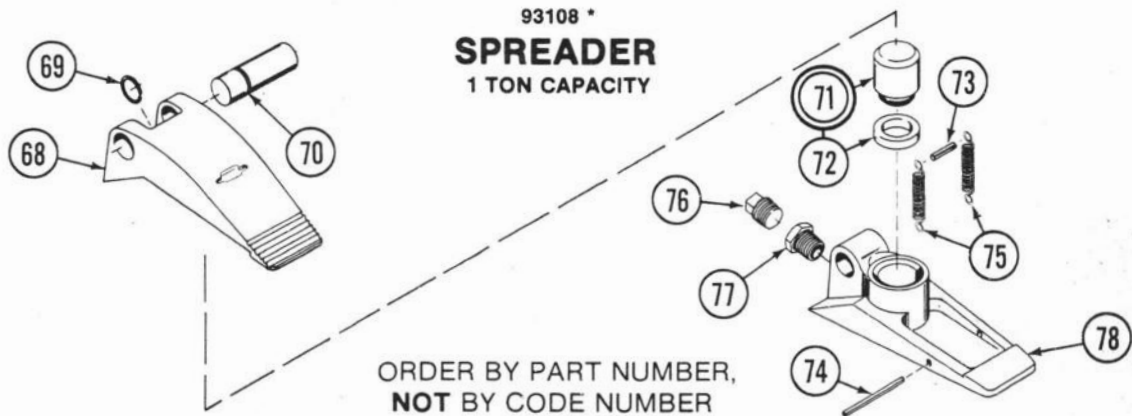
Code No.	Part No.	Description	No. Req'd.	Code No.	Part No.	Description	No. Req'd.
44	230745	Ram Head	1	50	230733	"U"-Cup	1
45	230744	Ram Cap	1	51	230750	Return Spring	1
46	230748	Ram Nut	1	52	230749	Ram Housing	1
47	230751	Retainer	1	53	230752	Screw	1
48	231810	Ram Assy.	1	54	93183	Ram Half Coupler**	1
49	230746	Heel Plate	1	55	230763	Dust Cap	1

** Available thru your local Distributor as well as your Service Depot.

ORDER BY PART NUMBER, **NOT** BY CODE NUMBER



Code No.	Part No.	Description	No. Req'd.	Code No.	Part No.	Description	No. Req'd.
56	230745	Ram Head	1	62	230733	"U"-Cup	1
57	230744	Ram Cap	1	63	230766	Return Spring	1
58	230748	Ram Nut	1	64	230765	Ram Housing	1
59	230751	Retainer	1	65	230752	Screw	1
60	231811	Ram Assy.	1	66	93183	Ram Half Coupler**	1
61	230746	Heel Plate	1	67	230763	Dust Cap	1



Code No.	Part No.	Description	No. Req'd.	Code No.	Part No.	Description	No. Req'd.
68	230786	Spreader - Upper Half	1	74	221938	Roll Pin - Return Spring	1
69	230792	Retaining Ring	1	75	230791	Return Spring	2
70	230790	Fulcrum Pin	1	76	230674	Pipe Plug	1
71	230782	Ram Assy.	1	77	230973	Reducer	1
72	230785	"U"-Cup	1	78	230788	Spreader - Lower Half	1
73	219960	Roll Pin - Return Spring	1				

NUMERICAL LISTING OF PARTS

Part No.	Code No.	Part No.	Code No.	Part No.	Code No.	Part No.	Code No.
93183	42, 54, 66	226180	6	230733	40, 50, 62	230791	75
200003	32	226373	27	230735	37	230792	69
201733	26	226375	28	230736	41	230973	77
203196	30	226376	29	230737	41A	231807	38
203197	15	230650	21	230744	45, 57	231810	48
203201	17	230651	23	230745	44, 56	231811	60
204281	10	230652	24	230746	49, 61		
209910	7	230653	22	230748	46, 58		
212540	31	230656	4	230749	52		
213149	9	230661	5	230750	51		
214154	13	230665	1	230751	47, 59		
214161	12	230669	14	230752	53, 65		
216258	8	230671	34	230763	43, 55, 67		
217909	16	230673	33	230765	64		
218776	25	230674	20, 76	230766	63		
219960	73	230675	19	230782	71		
220018	3	230676	2	230785	72		
221938	74	230727	35	230786	68		
222201	18	230730	36	230788	78		
226179	11	230732	39	230790	70		

MODEL 93535-C

93102-C

93111-C

PLUS—93110-C

93108-B *

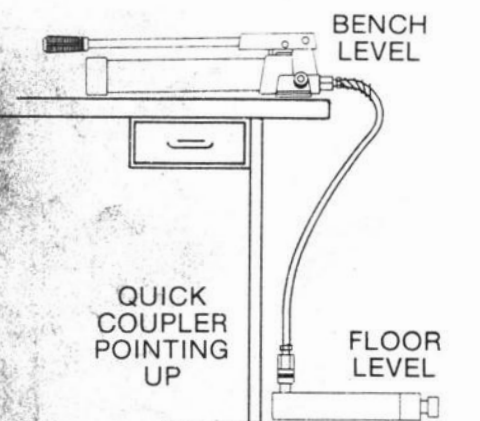
GENERAL INSTRUCTIONS

To assure long and dependable performance of your Portable Hydraulic Power Equipment, the following precautions should be observed:

1. Be sure that all units are wiped clean before and after using. A light grade of oil should be used on moving parts to prevent rusting and prolong life.
2. Load should be centered before applying pressure to prevent bending ram from sidetrain.
3. Make sure that all attachments are fully tightened.
4. When not in use, ram and pump piston should be fully retracted and release valve closed. Quick coupler openings should be plugged to prevent entrance of foreign matter.
5. Refill only with recommended Hydraulic Jack Oil.

OPERATING INSTRUCTIONS

Attach hose from pump to ram and position as shown in illustration. Ram should be in a horizontal position with connection up. Pump must be above level of ram as shown. Pump ram to fully extended position and release. Close release. When ram is fully retracted and unit is ready for use. Spreader should be positioned with connection up.



FAILURE TO OPERATE

There are times when one or more simple conditions exist that could prevent satisfactory operation of your power tools.

1. Airbound -- Extend and retract ram several times as shown under operating instructions.
2. Will not hold load -- (a). Release may not be tight enough. (b). Packing may be damaged and need replacing.
3. Foreign matter under valve balls or valves sticking -- See Airbound. If this action does not correct condition, oil should be drained, unit flushed with kerosene, and refilled. Valve balls and seats should be examined for defects.
4. Leakage -- Replace pump packing & upper seal. On rams or spreader, replace seals.

TO DISASSEMBLE

10 TON RAMS

- **1. Remove quick coupler (Use box end or socket only).
- **2. Remove allen cap screw (#53).
3. Remove ram nut (#46).
- 3a. Remove ram plunger assy. (#48).
4. Replace worn or damaged parts & reassemble.
5. Restake ram nut to prevent turning.

1 TON SPREADER

1. Drive out pin (#70) from right side of spreader as viewed from coupler end.
2. Lift pin end of upper half to clear & twist 90°.
3. Pump out ram (#71).
4. Replace worn or damaged parts & reassemble.

* Can be used with 93101 and 93102 Pumps.

** Does not apply to short rams.



Walker Manufacturing
A Tenneco Company

1201 Michigan Boulevard
Racine, Wisconsin 53402