

WALKER SERVICE DIVISION

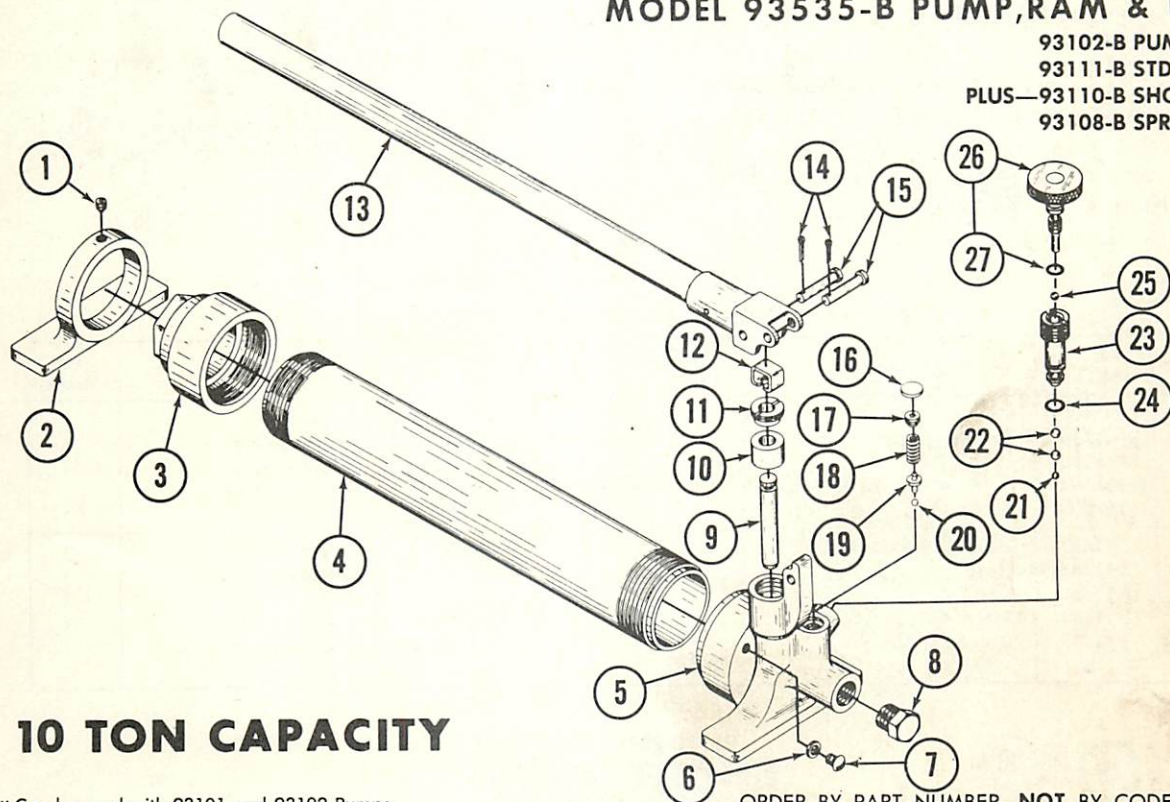
93102 SERIES "B" HAND PUMP 10 TON CAPACITY

JACK PARTS MANUAL

BODY-JAK^{T.M.}

MODEL 93535-B PUMP, RAM & HOSE

93102-B PUMP
93111-B STD. RAM
PLUS—93110-B SHORT RAM
93108-B SPREADER*



10 TON CAPACITY

* Can be used with 93101 and 93102 Pumps.

ORDER BY PART NUMBER, NOT BY CODE NUMBER

Code No.	Part No.	Description	No. Req'd.	Code No.	Part No.	Description	No. Req'd.
1	10-11719	Set Screw	1	15	D-2844	Pin	2
2	13-11709	Res. Head Collar	1	16	D-7270	Expansion Plug	1
3	13-11708	Reservoir Head	1	17	D-6078	Set Screw	1
4	13-11722	Reservoir	1	18	D-7232	Safety Valve Spring	1
5	13-11725	Base	1	19	10-10682	Overload Plunger	1
6	D-2015	Washer	1	20	D-2071	Ball (1/8 Dia.)	1
7	D-2001	Screw	1	21	D-2074	Ball (7/32 Dia.)	1
8	10-11028	Pipe Plug	1	22	D-2070	Ball (5/16 Dia.)	2
9	13-11696	Piston	1	23	19-12201	Release Insert Assy.	1
10	10-11721	Packing Set	1	24	D-2099-6	"O" Ring	1
11	13-11720	Packing Nut	1	25	10-12399	Ball (3/16 Dia.)	1
12	10-10168	Piston Return Clip	1	26	19-12398	Release Screw Assy.	1
13	19-11724	Handle Assy.	1	27	D-2099-5	"O" Ring	1
14	D-2016	Cotter Pin	2				

Items such as hoses etc. are classified as accessories and are available thru new equipment catalog only.

WALKER SERVICE

We have Factory-owned BRANCHES AND AUTHORIZED SERVICE DEPOTS located in the principal cities of the United States and Canada. They are operated by FACTORY TRAINED STAFFS and carry a comprehensive stock of REPAIR PARTS. Before returning Jacks for service, please contact the Factory or your Walker DISTRIBUTOR for location of Branch or Service Depot nearest you.

WALKER MANUFACTURING COMPANY

FACTORY SERVICE BRANCHES: — ATLANTA, GEORGIA — CLEVELAND, OHIO — KANSAS CITY, MISSOURI — PHILADELPHIA, PENNSYLVANIA.

GENERAL OFFICE: RACINE, WISCONSIN

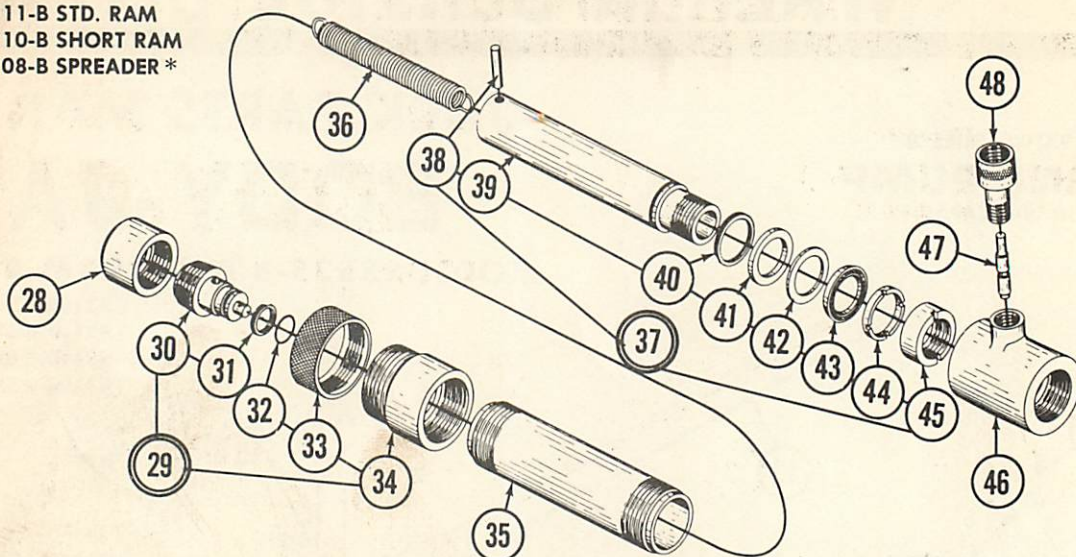
MODEL 93535-B

93102-B PUMP

93111-B STD. RAM

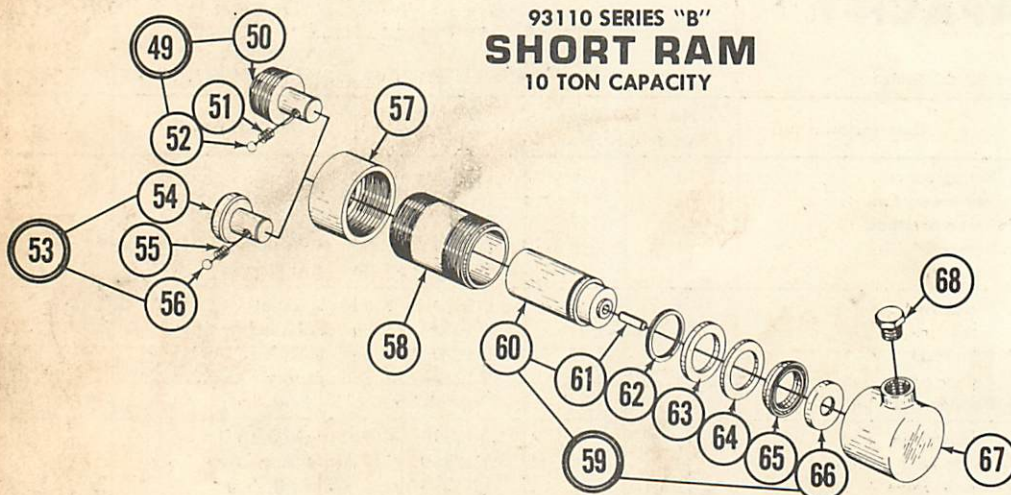
PLUS—93110-B SHORT RAM

93108-B SPREADER *

93111 SERIES "B"
STANDARD RAM
10 TON CAPACITY

ORDER BY PART NUMBER, NOT BY CODE NUMBER

Code No.	Part No.	Description	No. Req'd.	Code No.	Part No.	Description	No. Req'd.
28	13-11692	Cap	1	39	13-11685	Ram	1
29	19-11806	Ram Plug Assy.	1	40	10-11442	Retaining Ring	1
30	13-11690	Ram Plug	1	41	13-11689	Retaining Ring	1
31	D-2094-14	"O" Ring Back-Up Washer	1	42	13-11803	Back-Up Washer	1
32	D-2099-14	"O" Ring	1	43	13-11688	"U" Packing	1
33	13-11457	Thread Protector Collar	1	44	13-11687	Support Ring	1
34	13-11447	Head	1	45	13-11686	Ram Spacer	1
35	13-11683	Ram Cylinder	1	46	13-11681	Base	1
36	13-11684	Return Spring	1	47	13-11682	Spring Anchor Pin	1
37	19-11805	Ram Assembly	1	48	19-11813	Ram Half Coupler	1
38	10-11691	Roll Pin	1				

93110 SERIES "B"
SHORT RAM
10 TON CAPACITY

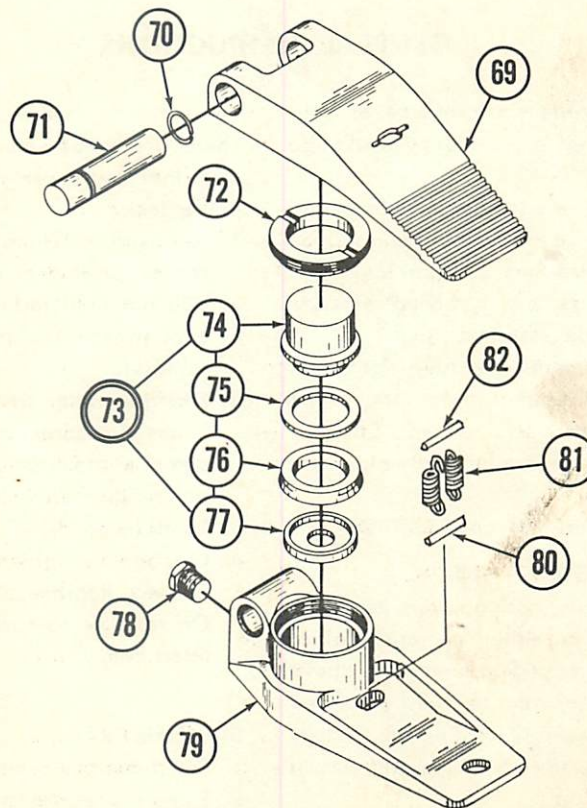
ORDER BY PART NUMBER, NOT BY CODE NUMBER

Code No.	Part No.	Description	No. Req'd.	Code No.	Part No.	Description	No. Req'd.
49	19-11966	Male Adapter Assy.	1	59	19-11954	Ram Assembly	1
50	13-11855	Male Adapter	1	60	13-11852	Ram	1
51	13-11645	Spring	1	61	D-8031	Roll Pin	1
52	D-7296	Ball (1/4 Dia.)	1	62	10-11442	Retaining Ring	1
53	19-11965	Ram Head Assy.	1	63	13-11689	Retaining Washer	1
54	13-11854	Ram Head	1	64	13-11803	Back-Up Washer	1
55	13-11645	Spring	1	65	13-11688	"U" Packing	1
56	D-7296	Ball (1/4 Dia.)	1	66	13-11856	"U" Cup Retainer	1
57	13-11853	Head	1	67	13-11850	Base	1
58	13-11851	Ram Cylinder	1	68	10-11028	Pipe Plug	1

93108 *
SPREADER
 1 TON CAPACITY

MODEL 93535-B

93102-B PUMP
 93111-B STD. RAM
 PLUS—93110-B SHORT RAM
 93108-B SPREADER *



* Can be used with 93101 and 93102 Pumps.

ORDER BY PART NUMBER, NOT BY CODE NUMBER

Code No.	Part No.	Description	No. Req'd.	Code No.	Part No.	Description	No. Req'd.
69	13-11858	Top	1	76	13-11688	"U" Packing	1
70	13-11863	Retaining Ring	1	77	13-11856	"U" Cup Retainer	1
71	13-11861	Hinge Pin	1	78	10-11028	Pipe Plug	1
72	13-11860	Retainer Bushing	1	79	13-11857	Base	1
73	19-11964	Ram Assembly	1	80	D-8057	Roll Pin	1
74	13-11859	Ram	1	81	13-11862	Return Spring	2
75	13-11803	Back-Up Washer	1	82	D-8057	Roll Pin	1

NUMERICAL LISTING OF PARTS

Part No.	Code No.	Part No.	Code No.	Part No.	Code No.	Part No.	Code No.
D-2001	7	10-10682	19	13-11689	41, 63	13-11858	69
D-2015	6	10-11028	8, 68, 78	13-11690	30	13-11859	74
D-2016	14	10-11442	40, 62	13-11692	28	13-11860	72
D-2070	22	10-11691	38	13-11696	9	13-11861	71
D-2071	20	10-11719	1	13-11708	3	13-11862	81
D-2074	21	10-11721	10	13-11709	2	13-11863	70
D-2094-14	31	10-12399	25	13-11720	11	19-11724	13
D-2099-5	27	13-11447	34	13-11722	4	19-11805	37
D-2099-6	24	13-11457	33	13-11725	5	19-11806	29
D-2099-14	32	13-11645	51, 55	13-11803	42, 64, 75	19-11813	48
D-2844	15	13-11681	46	13-11850	67	19-11954	59
D-6078	17	13-11682	47	13-11851	58	19-11964	73
D-7232	18	13-11683	35	13-11852	60	19-11965	53
D-7270	16	13-11684	36	13-11853	57	19-11966	49
D-7296	52, 56	13-11685	39	13-11854	54	19-12201	23
D-8031	61	13-11686	45	13-11855	50	19-12398	26
D-8057	80, 82	13-11687	44	13-11856	66, 77		
10-10168	12	13-11688	43, 65, 76	13-11857	79		

MODEL 93535-B

93102-B PUMP

93111-B STD. RAM

PLUS—93110-B SHORT RAM

93108-B SPREADER *

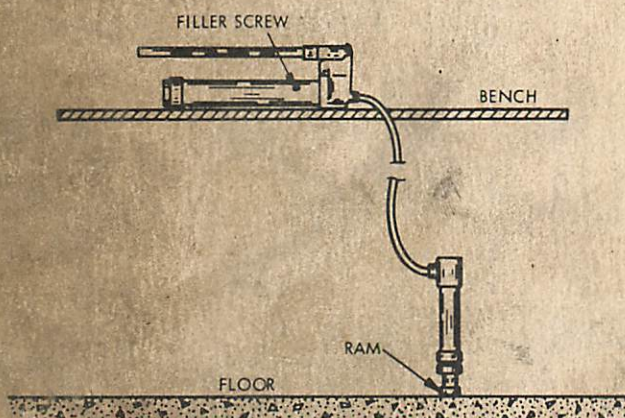
GENERAL INSTRUCTIONS

To assure long and dependable performance of your Hydraulic Tools, the following precautions should be observed:

1. Be sure that all units are wiped clean before and after using. A light grade of oil should be used on moving parts to prevent rusting and prolong life.
2. Load should be centered before applying pressure to prevent bending ram from sidetrain.
3. Make sure that all attachments are fully tightened.
4. When not in use, ram and pump piston should be fully retracted and release valve closed. Connecting openings to tools should be plugged to prevent entrance of foreign matter.
5. Refill only with recommended Hydraulic Jack Oil.

OPERATING INSTRUCTIONS

Attach hose from pump to ram and position as shown in illustration. Ram may be in either a horizontal or vertical position with connection up. Pump must be above level of ram as shown. Pump ram to fully extended position and release. Close release when ram is fully retracted and units are ready for use. Spreader should be positioned with connection up.



FAILURE TO OPERATE

There are times when one or more simple conditions exist that could prevent satisfactory operation of your power tools.

1. Airbound -- Extend and retract ram several times as shown under operating instructions.
2. Will not hold load -- (a) Release may not be tight enough. (b) Packing may be damaged and need replacing.
3. Foreign matter under valve balls or valves sticking -- See Airbound. If this action does not correct condition, oil should be drained, unit flushed with kerosene, and refilled. Valve balls and seats should be examined for defects.
4. Leakage -- Tighten packing nut at pump piston if leaking. Replace "V" packing set if leak continues. On rams or spreader, replace seals using repair kit listed below.

TO DISASSEMBLE

STANDARD RAM

1. Pump out and remove Roll Pin No. 10-11691.
2. Release pressure and allow ram to return.
3. Place unit in vise and pull out Ram Plug No. 13-11690.
4. Hold spring out and disconnect from Plug.
5. Remove Head No. 13-11447 and Ram No. 13-11685.
6. Replace worn parts and reassemble in reverse order.

SHORT RAM

1. Remove Head No. 13-11853 and Ram may be removed for replacement of worn parts.
2. Be sure Ram Cylinder No. 13-11851 is tight and reassemble.

SPREADER

1. Remove Hinge Pin No. 13-11861 and Roll Pin No. D-8057.
2. Remove Packing Nut, replace worn parts and reassemble.

WALKER MANUFACTURING COMPANY

FACTORY SERVICE BRANCHES: - ATLANTA, GEORGIA - CLEVELAND, OHIO - KANSAS CITY, MISSOURI - PHILADELPHIA, PENNSYLVANIA.

GENERAL OFFICE: RACINE, WISCONSIN