

WALKER SERVICE DIVISION

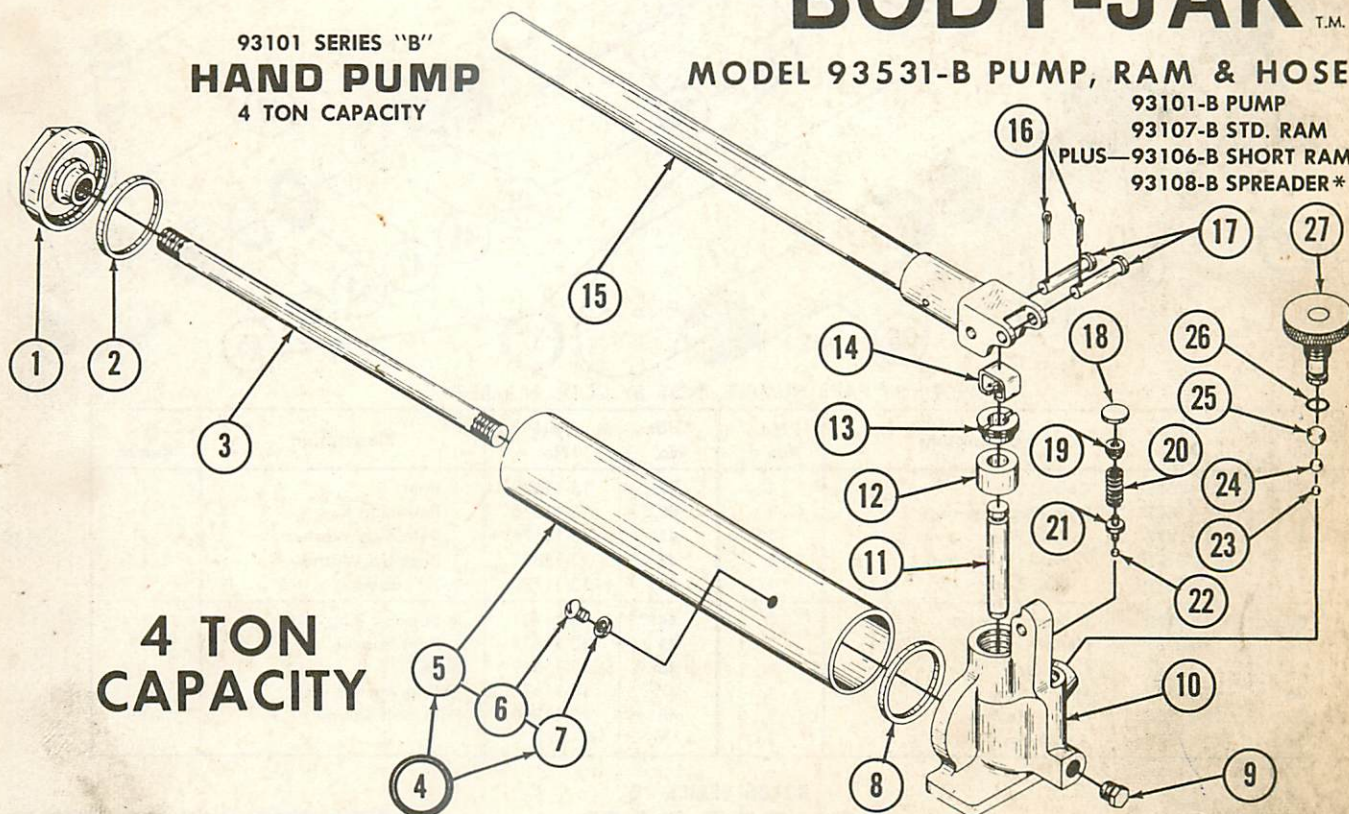
JACK PARTS MANUAL

BODY-JAK^{T.M.}

93101 SERIES "B"
HAND PUMP
4 TON CAPACITY

MODEL 93531-B PUMP, RAM & HOSE

93101-B PUMP
93107-B STD. RAM
PLUS—93106-B SHORT RAM
93108-B SPREADER*



* Can be used with 93101 and 93102 Pumps.

ORDER BY PART NUMBER, NOT BY CODE NUMBER

Code No.	Part No.	Description	No. Req'd.	Code No.	Part No.	Description	No. Req'd.
1	13-11705	Reservoir Head	1	15	19-11727	Handle Assembly	1
2	13-11726	Seal Washer	1	16	D-2016	Cotter Pin	2
3	13-11699	Stud	1	17	D-2844	Pin	2
4	19-11820	Reservoir Assembly	1	18	D-7270	Expansion Plug	1
5	13-11698	Reservoir	1	19	D-6078	Set Screw	1
6	D-2001	Screw	1	20	D-7232	Safety Valve Spring	1
7	D-2015	Washer	1	21	10-10682	Overload Plunger	1
8	13-11726	Seal Washer	1	22	D-2071	Valve	1
9	D-6106	Pipe Plug	1	23	D-2074	Valve	1
10	13-11700	Base	1	24	D-2070	Valve	1
11	13-11696	Piston	1	25	D-2075	Valve	1
12	10-11721	Packing Set	1	26	D-2099-6	"O" Ring	1
13	13-11720	Packing Nut	1	27	19-11723	Release Screw Assembly	1
14	10-10168	Piston Return Clip	1				

Items such as hoses etc. are classified as accessories and are available thru new equipment catalog only.

WALKER SERVICE

We have Factory-owned BRANCHES AND AUTHORIZED SERVICE DEPOTS located in the principal cities of the United States and Canada. They are operated by FACTORY TRAINED STAFFS and carry a comprehensive stock of REPAIR PARTS. Before returning Jacks for service, please contact the Factory or your Walker DISTRIBUTOR for location of Branch or Service Depot nearest you.

WALKER MANUFACTURING COMPANY

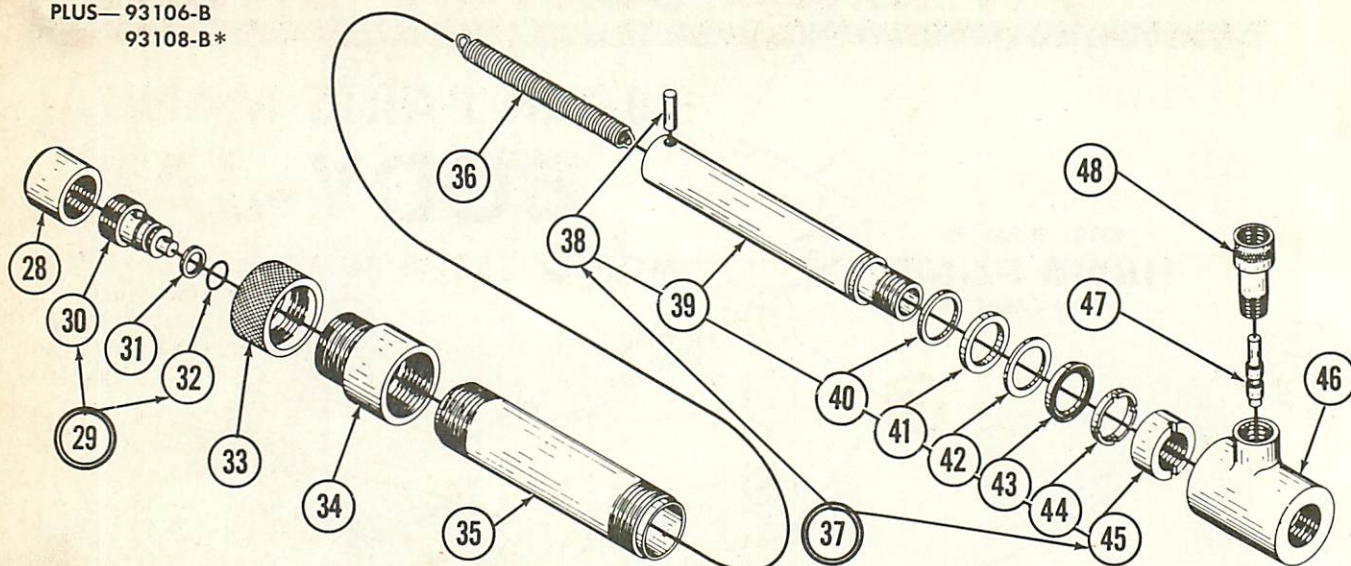
FACTORY SERVICE BRANCHES: — ATLANTA, GEORGIA — CLEVELAND, OHIO — KANSAS CITY, MISSOURI — PHILADELPHIA, PENNSYLVANIA.

GENERAL OFFICE: RACINE, WISCONSIN

MODEL 93531-B

93101-B
93107-B
PLUS—93106-B
93108-B*

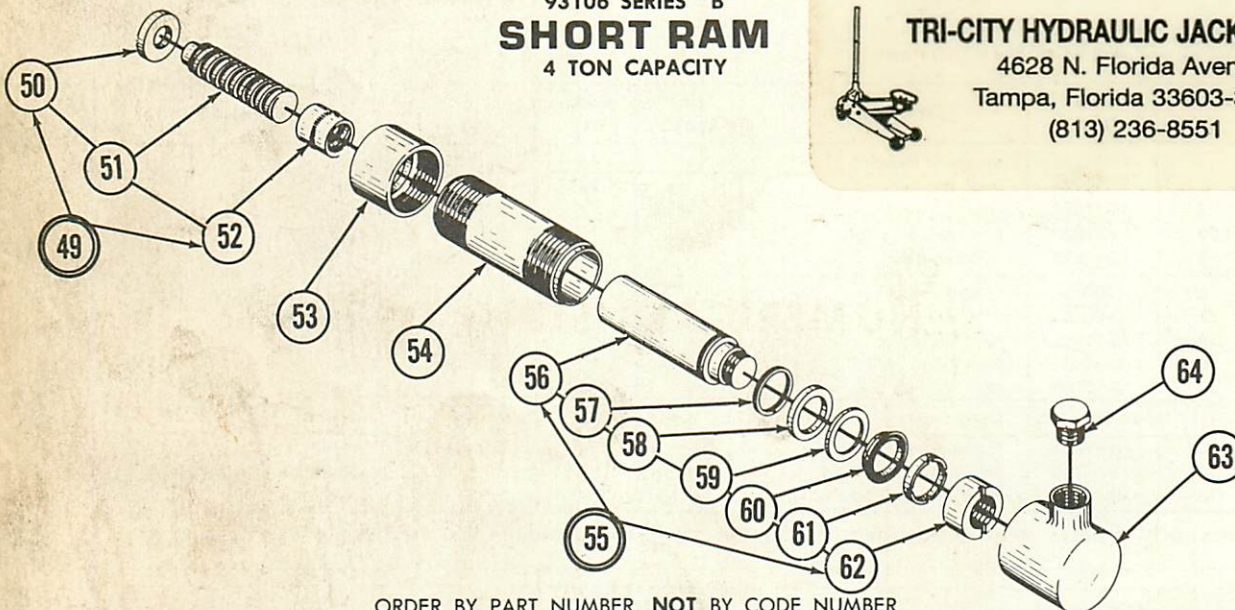
93107 SERIES "B" STANDARD RAM 4 TON CAPACITY



ORDER BY PART NUMBER, NOT BY CODE NUMBER

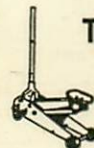
Code No.	Part No.	Description	No. Req'd.	Code No.	Part No.	Description	No. Req'd.
28	13-11678	Cap	1	39	13-11673	Ram	1
29	19-11809	Ram Plug Assembly	1	40	13-11676	Retaining Ring	1
30	13-11677	Ram Plug	1	41	13-11675	Retaining Washer	1
31	D-2094-10	Back-Up Washer	1	42	13-11821	Back-Up Washer	1
32	D-2099-10	"O" Ring	1	43	13-11730	"U" Packing	1
33	13-10260	Thread Protector	1	44	13-11731	Support Ring	1
34	13-10982	Head	1	45	13-11674	Ram Spacer	1
35	13-11671	Cylinder	1	46	13-11669	Base	1
36	13-11672	Return Spring	1	47	13-11670	Spring Anchor Pin	1
37	19-11808	Ram Assembly	1	48	19-11810	Ram Half Coupler	1
38	10-11679	Roll Pin	1				

93106 SERIES "B" SHORT RAM 4 TON CAPACITY



ORDER BY PART NUMBER, NOT BY CODE NUMBER

Code No.	Part No.	Description	No. Req'd.	Code No.	Part No.	Description	No. Req'd.
49	19-11968	Extension Screw Assembly	1	57	13-11676	Retaining Ring	1
50	13-11843	Ram Head	1	58	13-11675	Retaining Washer	1
51	13-11844	Extension Screw	1	59	13-11821	Back-Up Washer	1
52	13-11845	Ext. Screw Bushing	1	60	13-11730	"U" Packing	1
53	13-11848	Head	1	61	13-11731	Supporting Ring	1
54	13-11847	Ram Cylinder	1	62	13-11674	Ram Spacer	1
55	19-11967	Ram Assembly	1	63	13-11846	Base	1
56	13-11849	Ram	1	64	10-11028	Pipe Plug	1



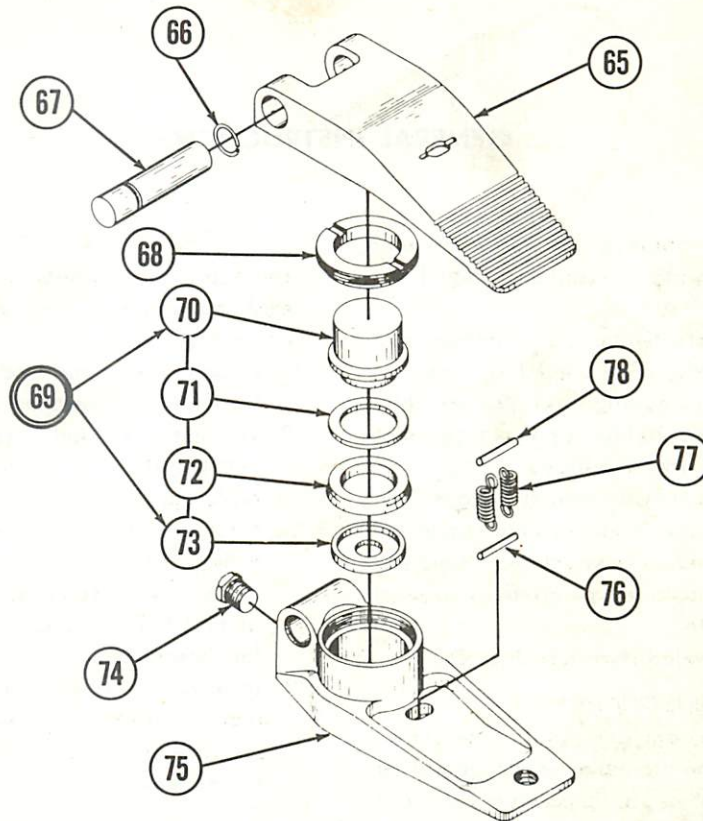
TRI-CITY HYDRAULIC JACK SERVICE

4628 N. Florida Avenue
Tampa, Florida 33603-3700
(813) 236-8551

93108 *
SPREADER
1 TON CAPACITY

MODEL 93531-B

93101-B
93107-B
PLUS—93106-B
93108-B *



ORDER BY PART NUMBER, **NOT** BY CODE NUMBER

Code No.	Part No.	Description	No. Req'd.	Code No.	Part No.	Description	No. Req'd.
65	13-11858	Top	1	72	13-11688	"U" Packing	1
66	13-11863	Retaining Ring	1	73	13-11856	"U" Cup Retainer	1
67	13-11861	Hinge Pin	1	74	10-11028	Pipe Plug	1
68	13-11860	Retainer Bushing	1	75	13-11857	Base	1
69	19-11964	Ram Assembly	1	76	D-8057	Roll Pin	1
70	13-11859	Ram	1	77	13-11862	Return Spring	2
71	13-11803	Back-Up Washer	1	78	D-8057	Roll Pin	1

* Can be used with 93101 and 93102 Pumps.

NUMERICAL LISTING OF PARTS

Part No.	Code No.	Part No.	Code No.	Part No.	Code No.	Part No.	Code No.
D-2001	6	10-10682	21	13-11700	10	13-11846	63
D-2015	7	13-10982	34	13-11705	1	13-11847	54
D-2016	16	10-11028	64, 74	13-11720	13	13-11848	53
D-2070	24	13-11669	46	10-11721	12	13-11849	56
D-2071	22	13-11670	47	19-11723	27	13-11856	73
D-2074	23	13-11671	35	13-11726	2, 8	13-11857	75
D-2075	25	13-11672	36	19-11727	15	13-11858	65
D-2094-10	31	13-11673	39	13-11730	43, 60	13-11859	70
D-2099-6	26	13-11674	45, 62	13-11731	44, 61	13-11860	68
D-2099-10	32	13-11675	41, 58	13-11803	71	13-11861	67
D-2844	17	13-11676	40, 57	19-11808	37	13-11862	77
D-6078	19	13-11677	30	19-11809	29	13-11863	66
D-6106	9	13-11678	28	19-11810	48	19-11964	69
D-7232	20	10-11679	38	19-11820	4	19-11967	55
D-7270	18	13-11688	72	13-11821	42, 59	19-11968	49
D-8057	76, 78	13-11696	11	13-11843	50		
10-10168	14	13-11698	5	13-11844	51		
13-10260	33	13-11699	3	13-11845	52		

MODEL 93531-B

93101-B

93107-B

PLUS—93106-B

93108-B *

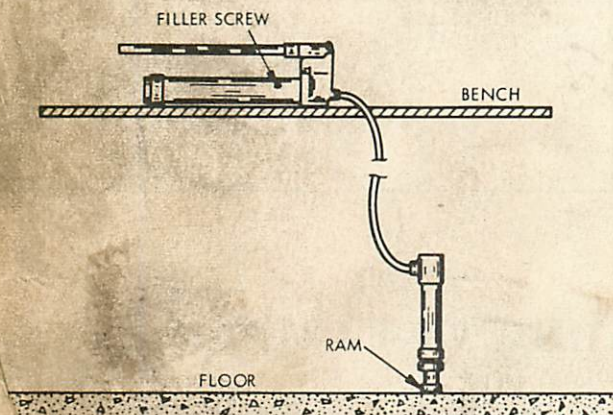
GENERAL INSTRUCTIONS

To assure long and dependable performance of your Hydraulic Tools, the following precautions should be observed:

1. Be sure that all units are wiped clean before and after using. A light grade of oil should be used on moving parts to prevent rusting and prolong life.
2. Load should be centered before applying pressure to prevent bending ram from sidestrain.
3. Make sure that all attachments are fully tightened.
4. When not in use, ram and pump piston should be fully retracted and release valve closed. Connecting openings to tools should be plugged to prevent entrance of foreign matter.
5. Refill only with recommended Hydraulic Jack Oil.

OPERATING INSTRUCTIONS

Attach hose from pump to ram and position as shown in illustration. Ram may be in either a horizontal or vertical position with connection up. Pump must be above level of ram as shown. Pump ram to fully extended position and release. Close release when ram is fully retracted and units are ready for use. Spreader should be positioned with connection up.



FAILURE TO OPERATE

There are times when one or more simple conditions exist that could prevent satisfactory operation of your power tools.

1. Airbound -- Extend and retract ram several times as shown under operating instructions.
2. Will not hold load -- (a) Release may not be tight enough. (b) Packing may be damaged and need replacing.
3. Foreign matter under valve balls or valves sticking -- See Airbound. If this action does not correct condition, oil should be drained, unit flushed with kerosene, and refilled. Valve balls and seats should be examined for defects.
4. Leakage -- Tighten packing nut at pump piston if leaking. Replace "V" packing set if leak continues. On rams or spreader, replace seals using repair kit listed below.

TO DISASSEMBLE

STANDARD RAM

1. Pump out and remove Roll Pin No. 10-11679.
2. Release pressure and allow ram to return.
3. Place unit in vise and pull out Ram Plug No. 13-11677.
4. Hold spring out and disconnect from Plug.
5. Remove Head No. 13-10982 and Ram No. 13-11673.
6. Replace worn parts and reassemble in reverse order.

SHORT RAM

1. Remove Head No. 13-11848 and Ram may be removed for replacement of worn parts.
2. Be sure Ram Cylinder No. 13-11847 is tight and reassemble.

SPREADER

1. Remove Hinge Pin No. 13-11861 and Roll Pin No. D-8057.
2. Remove Packing Nut, replace worn parts and reassemble.

WALKER MANUFACTURING COMPANY

FACTORY SERVICE BRANCHES: — ATLANTA, GEORGIA — CLEVELAND, OHIO — KANSAS CITY, MISSOURI — PHILADELPHIA, PENNSYLVANIA.

GENERAL OFFICE: RACINE, WISCONSIN