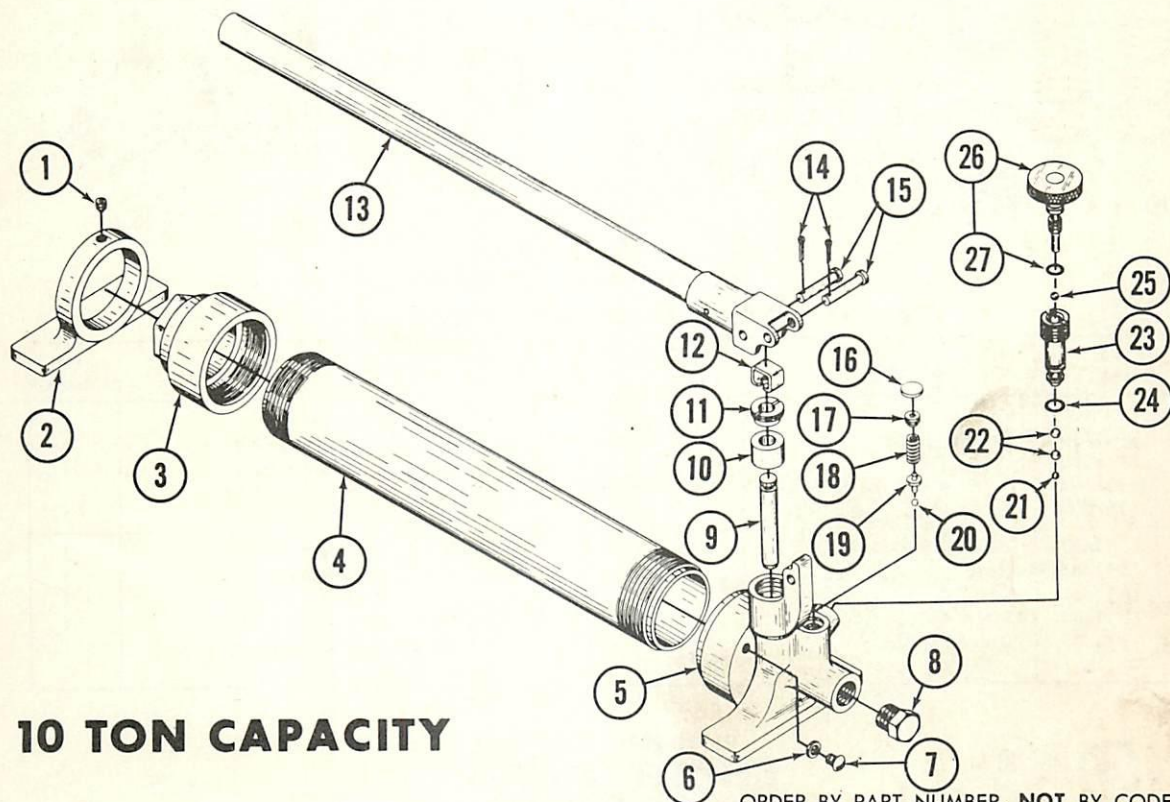


# WALKER SERVICE DIVISION

## JACK PARTS MANUAL

### 93102 SERIES "B" HAND PUMP 10 TON CAPACITY



### 10 TON CAPACITY

ORDER BY PART NUMBER, NOT BY CODE NUMBER

Code No.	Part No.	Description	No. Req'd.	Code No.	Part No.	Description	No. Req'd.
1	10-11719	Set Screw	1	15	D-2844	Pin	2
2	13-11709	Res. Head Collar	1	16	D-7270	Expansion Plug	1
3	13-11708	Reservoir Head	1	17	D-6078	Set Screw	1
4	13-11722	Reservoir	1	18	D-7232	Safety Valve Spring	1
5	13-11725	Base	1	19	10-10682	Overload Plunger	1
6	D-2015	Washer	1	20	D-2071	Ball (1/8 Dia.)	1
7	D-2001	Screw	1	21	D-2074	Ball (7/32 Dia.)	1
8	10-11028	Pipe Plug	1	22	D-2070	Ball (5/16 Dia.)	2
9	13-11696	Piston	1	23	19-12201	Release Insert Assy.	1
10	10-11721	Packing Set	1	24	D-2099-6	"O" Ring	1
11	13-11720	Packing Nut	1	25	10-12399	Ball (3/16 Dia.)	1
12	10-10168	Piston Return Clip	1	26	19-12398	Release Screw Assy.	1
13	19-11724	Handle Assy.	1	27	D-2099-5	"O" Ring	1
14	D-2016	Cotter Pin	2				

Items such as hoses etc. are classified as accessories and are available thru new equipment catalog only.

### WALKER SERVICE

We have Factory-owned BRANCHES AND AUTHORIZED SERVICE DEPOTS located in the principal cities of the United States and Canada. They are operated by FACTORY TRAINED STAFFS and carry a comprehensive stock of REPAIR PARTS. Before returning Jacks for service, please contact the Factory or your Walker DISTRIBUTOR for location of Branch or Service Depot nearest you.

### WALKER MANUFACTURING COMPANY

FACTORY SERVICE BRANCHES: - ATLANTA, GEORGIA - CLEVELAND, OHIO - KANSAS CITY, MISSOURI - PHILADELPHIA, PENNSYLVANIA.

GENERAL OFFICE: RACINE, WISCONSIN