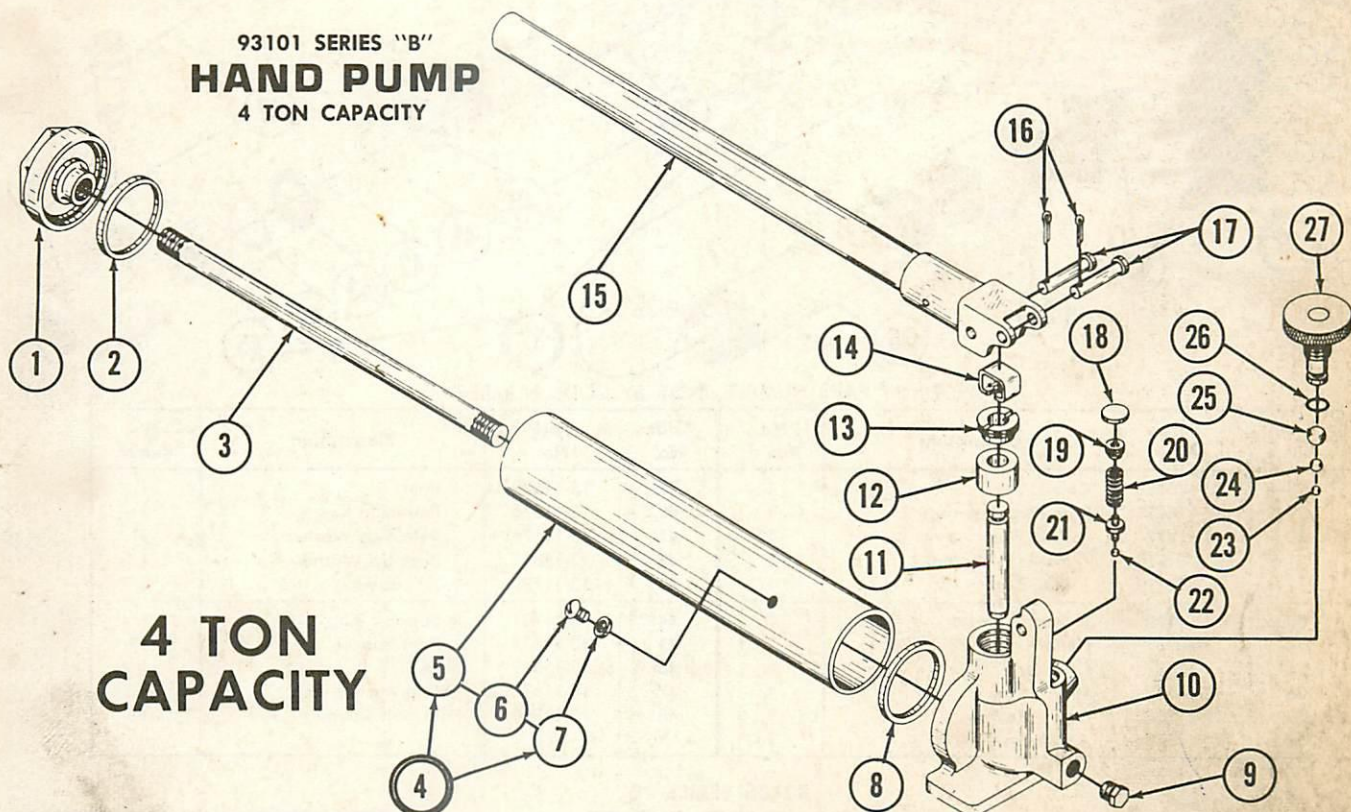


WALKER SERVICE DIVISION

JACK PARTS MANUAL



* Can be used with 93101 and 93102 Pumps.

ORDER BY PART NUMBER, NOT BY CODE NUMBER

Code No.	Part No.	Description	No. Req'd.	Code No.	Part No.	Description	No. Req'd.
1	13-11705	Reservoir Head	1	15	19-11727	Handle Assembly	1
2	13-11726	Seal Washer	1	16	D-2016	Cotter Pin	2
3	13-11699	Stud	1	17	D-2844	Pin	2
4	19-11820	Reservoir Assembly	1	18	D-7270	Expansion Plug	1
5	13-11698	Reservoir	1	19	D-6078	Set Screw	1
6	D-2001	Screw	1	20	D-7232	Safety Valve Spring	1
7	D-2015	Washer	1	21	10-10682	Overload Plunger	1
8	13-11726	Seal Washer	1	22	D-2071	Valve	1
9	D-6106	Pipe Plug	1	23	D-2074	Valve	1
10	13-11700	Base	1	24	D-2070	Valve	1
11	13-11696	Piston	1	25	D-2075	Valve	1
12	10-11721	Packing Set	1	26	D-2099-6	"O" Ring	1
13	13-11720	Packing Nut	1	27	19-11723	Release Screw Assembly	1
14	10-10168	Piston Return Clip	1				

Items such as hoses etc. are classified as accessories and are available thru new equipment catalog only.

WALKER SERVICE

We have Factory-owned BRANCHES AND AUTHORIZED SERVICE DEPOTS located in the principal cities of the United States and Canada. They are operated by FACTORY TRAINED STAFFS and carry a comprehensive stock of REPAIR PARTS. Before returning Jacks for service, please contact the Factory or your Walker DISTRIBUTOR for location of Branch or Service Depot nearest you.

WALKER MANUFACTURING COMPANY

FACTORY SERVICE BRANCHES: - ATLANTA, GEORGIA - CLEVELAND, OHIO - KANSAS CITY, MISSOURI - PHILADELPHIA, PENNSYLVANIA.

GENERAL OFFICE: RACINE, WISCONSIN