

PORTABLE HYDRAULIC JACK

15 TON CAPACITY

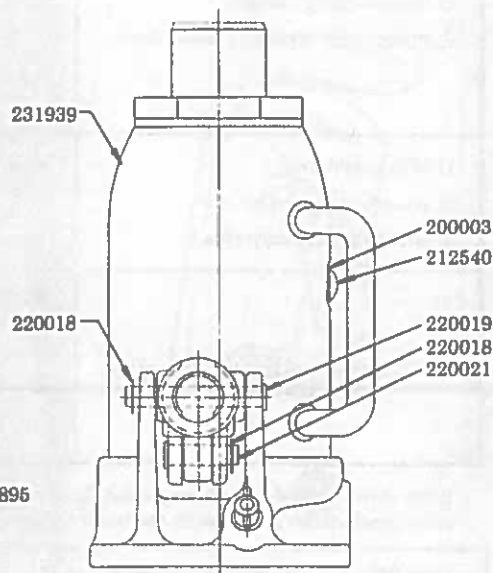
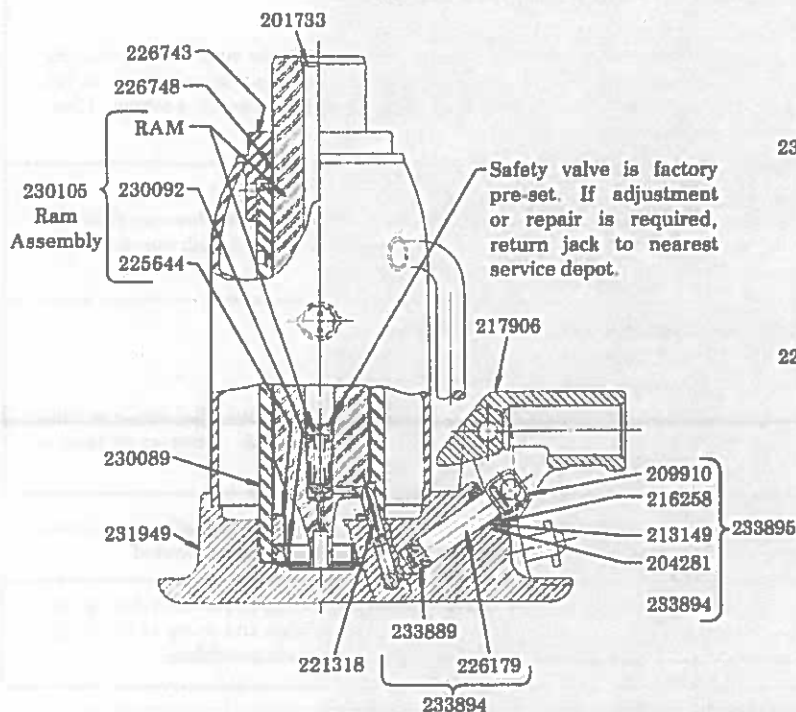
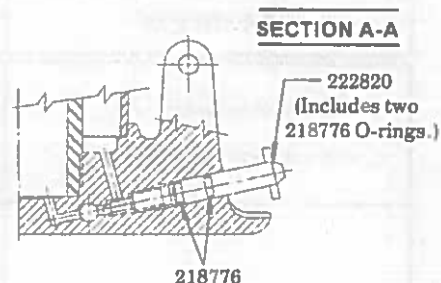
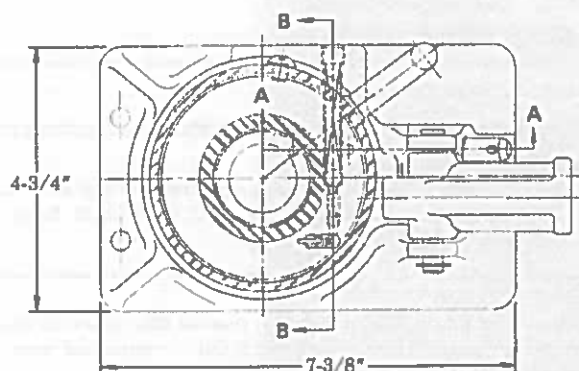
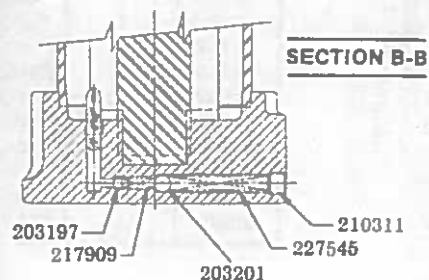
Model 91-230, 93230,
95230, YA-230

Series "C"

SPECIFICATIONS:

Height (Closed): 10"
Maximum Height: 15-1/2"
Power Raise: 5-1/2"

MODEL	LABEL KIT NO.	REPAIR KIT NO.
91-230	240045	91-414
93230	240046	240508 240508
95230	240047	240508
YA-230	240048	240508



LINCOLN ST. LOUIS
4010 GOODFELLOW BLVD • ST. LOUIS, MO 63120 • (314) 679-4200



A DIVISION OF
McNEIL
CORPORATION

SECTION - **W8**
PAGE - **4A**

SERVICE PARTS

PART	QUAN.	DESCRIPTION	PART	QUAN.	DESCRIPTION
10667	1	Handle	220021	1	Pump pin
*200003	1	Gasket	*221318	1	Suction screen
201733	1	Expansion plug	222820	1	Release stem & o-ring ass'y.
*203197	1	Ball	*225644	1	Heel plate
*203201	1	Ball	226179	1	Pump
*204281	1	Washer	226743	1	Tank nut
209910	1	Pump clip	*226748	1	Quad ring
*210311	1	Pipe plug	*227545	1	Spring
212540	1	Filler screw	230089	1	Cylinder
*213149	1	Packing ring	*230092	1	U-cup packing
*216258	1	Pump gland cover	230105	1	Ram & valve assembly
217906	1	Handle socket	231939	1	Oil tank
*217909	1	Spring	231949	1	Base
*218776	2	O-ring	*233889	1	U-cup packing
220018	2	Retaining ring	233894	1	Pump assembly
220019	1	Fulcrum pin	233895	1	Complete pump assembly

*Included in 240508 Repair Kit.

TROUBLE SHOOTING

PROBLEM	SOLUTION
1) Will not lift full height. 2) Will not lower completely.	Reservoir could be overfilled — with jack upright; remove filler screw or filler plug, open release and SLOWLY push jack ram into lowered position. Any excess oil will run out fill hole. Replace filler screw or filler plug when oil has stopped flowing.
1) Will not lift load. 2) Will not lift full height. 3) Pump feels "Spongy" under load.	The Jack could be low on oil — with jack in upright position and ram fully lowered, remove filler screw or filler plug and fill reservoir with clean HYDRAULIC JACK OIL — correct oil level is reached when oil level is at bottom edge of fill hole. The Jack could be air-bound — open the release valve one full turn and pump the handle vigorously. Close the release valve and pump to full height. Continue pumping several times at full height. Open release valve and push ram down into lowered position. Close release and operate normally.
1) Will not lift load. 2) Handle raises under load. 3) Handle lowers under load.	Valve might not be closing — make certain release valve is closed. Starting with ram in fully lowered position, SLOWLY raise ram out to full height. Open release valve and push ram down into lowered position. Jack should now operate properly.
1) Will not work in horizontal position.	Jack in wrong position for horizontal operation — valving plug on side of jack base must face upward. The Jack could be low on oil — with jack in upright position and ram fully lowered, remove filler screw or filler plug and fill reservoir with clean HYDRAULIC JACK OIL — correct oil level is reached when oil level is at bottom edge of fill hole.

If the above procedures do not correct the problem, contact your nearest service depot. When submitting any jack or equipment to be repaired, be sure to state the nature of the problem and indicate whether an estimate of the repair cost is needed.

IMPORTANT: As with any hydraulic unit, this unit may occasionally become "air-bound" due to being tipped over during shipment. To purge the air from the lines, open the release and pump rapidly a few strokes. Close release and pump to full height, then open the release to allow the ram to descend rapidly. If the pump still seems "spongy", repeat the procedure.

RETAIN THIS INFORMATION FOR FUTURE REFERENCE

When ordering replacement parts, list: Part Number, Description, Model Number, and Series Letter.
 LINCOLN ST. LOUIS provides a Distributor Network that stocks equipment and replacement parts.
 A list of Authorized Service Departments will be furnished upon request.