

Hydraulic Floor Service Jack

Owner's Manual and
Spare Parts List

1½ THRU 6½ TON
Capacity



VIKING

Models: 405, 425, 435, 455

Important

Please read these instructions carefully before using your jack.
Proper use and care of the jack will help to assure you of continuous, safe, trouble free performance



Catalog Nr. 054210

GUILDERLAND, NEW YORK, 12084, USA

Owner's Manual and Spare Parts List

Issued: July, 1st 1985



TRI-CITY HYDRAULIC JACK SERVICE

4628 N. Florida Avenue
Tampa, Florida 33603-3700
(813) 236-8551

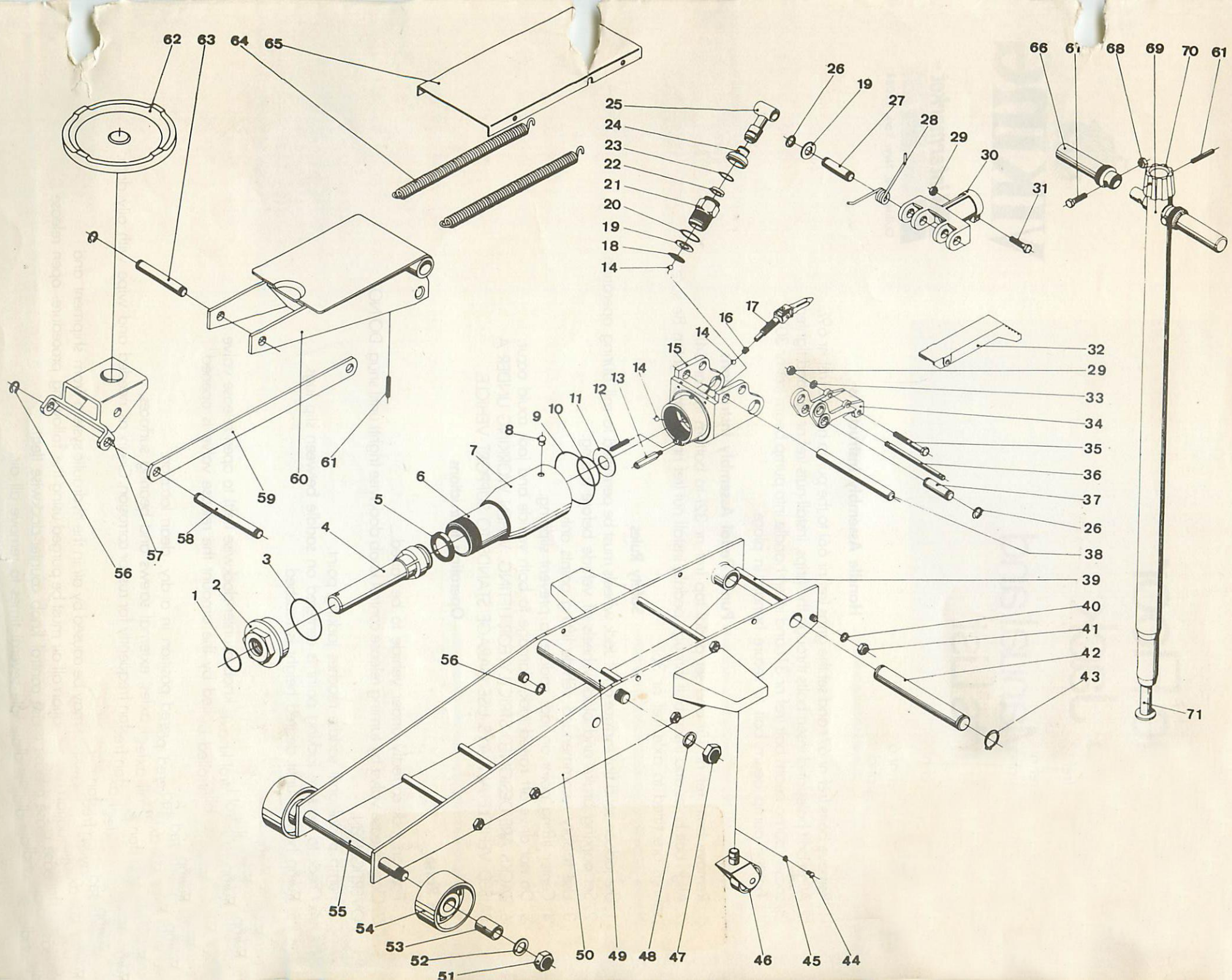


VIKING

ATD
7305

REF. NR.	PART NAME	PART NR.							
		QTY	1 1/2 T 405	QTY	2 1/4T 425	QTY	4 1/2T 435	QTY	6 1/2T 455
01	O Ring	1	862218	1	862218	1	862220	1	862327
02	Head Nut	1	981010	1	981010	1	981040	1	981060
03	O Ring	1	862040	1	862040	1	862043	1	862158
04	Lift Piston	1	690020	1	690020	1	690048	1	690067
04C	Lift Piston, Compl(04 and 05)	1	691020	1	691020	1	691048	1	691068
05	Cup	1	832430	1	832430	1	832242	1	832348
06	Cylinder Tube	1	916012	1	916012	1	916041	1	916061
07	Tank Tube	1	969012	1	969012	1	969041	1	969061
08	Plug, Rubber	1	893101	1	893101	1	893101	1	893101
09	O Ring	1	862043	1	862043	1	862156	1	862158
10	O Ring	1	862137	1	862137	1	862232	1	862236
11	Washer	1	905010	1	905010	1	905041	1	905061
12	Oil Filter	1	828010	1	828010	1	828010	1	828010
13	Overload Valve	1	699018	1	699018	1	699018	1	699018
14	Ball	3	824030	3	824030	3	824030	3	824030
15	Pump Housing	1	907010	1	907010	1	907040	1	907060
16	Packing	1	883205	1	883205	1	883205	1	883205
17	Release Valve Shaft	1	688018	1	688018	1	688018	1	688018
18	Oil Filter	1	828011	1	828011	1	828011	1	828011
19	Washer	3	905011	3	905011	3	905011	3	905011
20	O Ring	1	862120	1	862120	1	862120	1	862120
21	Pump Cylinder	1	915011	1	915011	1	915011	1	915011
22	Cup	1	832313	1	832313	1	832313	1	832313
23	O Ring	1	862115	1	862115	1	862115	1	862115
24	Dust Seal	1	835010	1	835010	1	835010	1	835010
25	Pump Piston	1	689017	1	689017	1	689017	1	689017
25C	Pump Piston, Compl(22 thru 25)	1	689019	1	689019	1	689019	1	689019
26	Track Ring	6	804012	6	804012	6	804012	6	804012
27	Axle	2	927092	2	927092	2	927092	2	927092
28	Spring (Pair)	1	686801	1	686801	1	686801	1	686801
29	Nut	2	873301	2	873301	2	873301	2	873301
30	Pump Beam	1	929011	1	929011	1	929011	1	929011
31	Bolt	1	866331	1	866331	1	866331	1	866331
32	Pedal, Sup.	1	959014	1	959014	1	959014	1	959014
33	Washer	1	806040	1	806040	1	806040	1	806040
34	Pedal, Inf.	1	959012	1	959012	1	959012	1	959012
35	Bolt	1	866339	1	866339	1	866339	1	866339
36	Axle	1	927032	1	927032	1	927032	1	927032
37	Axle	1	927091	1	927091	1	927091	1	927091

REF. NR.	PART NAME	PART NR. ↓							
		QTY	1 1/2T 405	QTY	2 1/4T 425	QTY	4 1/2T 435	QTY	6 1/2T 455
38	Axle	1	927095	1	927095	1	927096	1	927096
39	Axle	6	927070	5	927070	4	927071	5	927071
40	Washer	12	806050	10	806050	8	806050	10	806050
41	Nut	12	873400	10	873400	8	873400	10	873400
42	Axle	1	927150	1	927150	1	927210	1	927253
43	Track Ring	2	804125	2	804125	2	804135	2	804141
44	Bolt	2	866103	2	866103	2	866207	2	866207
45	Washer	2	806020	2	806020	2	806030	2	806030
46	Caster	2	693018	2	693018	2	693046	2	693046
47	Nut	2	873700	2	873700	2	873800	2	873800
48	Washer	2	806110	2	806110	2	806130	2	806130
49	Axle	1	927151	1	927151	1	927180	1	927211
50	Frame (Pair)	1	684017	1	684025	1	684048	1	684068
51	Nut	2	873601	2	873601	2	873700	2	873700
52	Washer	2	806090	2	806090	2	806111	2	806111
53	Spacer	2	910151	2	910151	2	910171	2	910171
54	Wheel	2	973010	2	973010	2	973040	2	973040
55	Axle	1	927130	1	927130	1	927181	1	927181
56	Track Ring	6	804012	6	804012	6	804119	6	804119
57	Saddle Carrier	1	694018	1	694018	1	694046	1	694046
58	Axle	1	927094	1	927094	1	927111	1	927111
59	Link	2	983034	2	983031	2	983041	2	983042
60	Lift Arm	1	675017	1	675024	1	675044	1	675066
60C	Lift Arm, Compl(56 Thru 60, 63)	1	676017	1	676024	1	676044	1	676066
61	Tension Pin	2	871024	2	871024	2	871024	2	871024
62	Saddle	1	670018	1	670018	1	670018	1	670018
63	Axle	1	927093	1	927093	1	927110	1	927110
64	Spring	2	856667	2	856667	2	686802	2	686802
65	Cover	1	921011	1	921023	1	921041	1	921060
66	Grip	2	686053	2	686053	2	686053	2	686053
67	Bolt	2	866119	2	866119	2	866119	2	866119
68	Nut	2	873100	2	873100	2	873100	2	873100
69	Handle, Cmpl (61, 66 Thru 71)	1	678019	1	678019	1	678019	1	678019
70	Knob	1	947010	1	947010	1	947010	1	947010
71	Handle, Internal	1	677019	1	677019	1	677019	1	677019
	Repair Kit (1, 3, 5, 8, 9 10, 16, 20, 22, 23, 24)		683012		683012		683047		683067
	Hydraulic Unit (1 Thru 25)		696020		696020		696047		696067
	Hydraulic Unit, Compl (1 Thru 38)		697021		697021		697044		697067



Hydraulic Floor Service Jack

Owner's Manual and Spare Parts List



VIKING



Guiderland, New York, 12084

Handle Assembly Instructions

1. Remove bolts (ref nr 67) and set the grips (ref nr 66) to the pump handle (ref nr 69).
2. Align bolt holes and insert bolts through the grips, install nuts (ref nr 68) and tighten.
3. Loosen pump beam bolt (ref nr 31) and insert handle into pump beam (ref nr 30).
4. Tighten pump beam bolt to secure handle in place.

Pump Pedal Assembly Instructions

1. Remove bolt (ref nr 35) and set pedal top (ref nr 32) to bottom (ref nr 34).
2. Align bolt holes and insert bolt through pedals, install nut (ref nr 29) and tighten. Be sure springs are fitted to axle (ref nr 36).

Safety Rules

1. Use jack on solid flat surface only. Jack wheels must be permitted to roll during operation.
2. Set parking brake and block wheels of vehicle before raising.
3. Use factory recommended vehicle lifting points only.
4. Center lifting point on jack saddle to prevent slipping.
5. Do not drive off raised jack, damage to both vehicle and jack could occur.
6. JACKS ARE DESIGNED STRICTLY FOR LIFTING. WHEN WORKING UNDER A RAISED VEHICLE ALWAYS USE GARAGE STANDS TO SUPPORT VEHICLE.

Operating Instructions

To Raise

1. Position jack correctly under vehicle to be raised.
2. Close release valve by turning release control knob clockwise (right) until snug. DO NOT OVERTIGHTEN.
3. Pump pedal until saddle reaches jacking point.
4. Check to be sure jacking point is centered on saddle between slip lugs.
5. Pump handle until desired height is reached.

To Lower

1. Slowly turn release control knob counter-clockwise (left) to open release valve.
2. Lowering speed is controlled by the amount the release valve is opened.

Maintenance

1. Store jack in fully lowered position in a dry, clean location.
2. Lubricate frequently all axles, external screws and bearing surfaces.
3. Inspect lift and pump piston frequently for rust or corrosion. Clean as needed and wipe with oily cloth.

Service

1. Poor lifting performance may be caused by air in the hydraulic system from shipment and handling. To correct this situation all air must be purged using the following procedure: open release valve fully by turning release control knob counter-clockwise (left). Using full stroke pump handle several times to remove all air.