

Hydraulic Floor Service Jack

Owner's Manual and
Spare Parts List

1½ THRU 6½ TON
Capacity



VIKING

Models: 405, 425, 435, 455

Important

Please read these instructions carefully before using your jack.
Proper use and care of the jack will help to assure you of continuous, safe, trouble free performance



Catalog Nr. 054210

GUILDERLAND, NEW YORK, 12084, USA

Owner's Manual and Spare Parts List

Issued: July, 1st 1985



TRI-CITY HYDRAULIC JACK SERVICE

4628 N. Florida Avenue
Tampa, Florida 33603-3700
(813) 236-8551

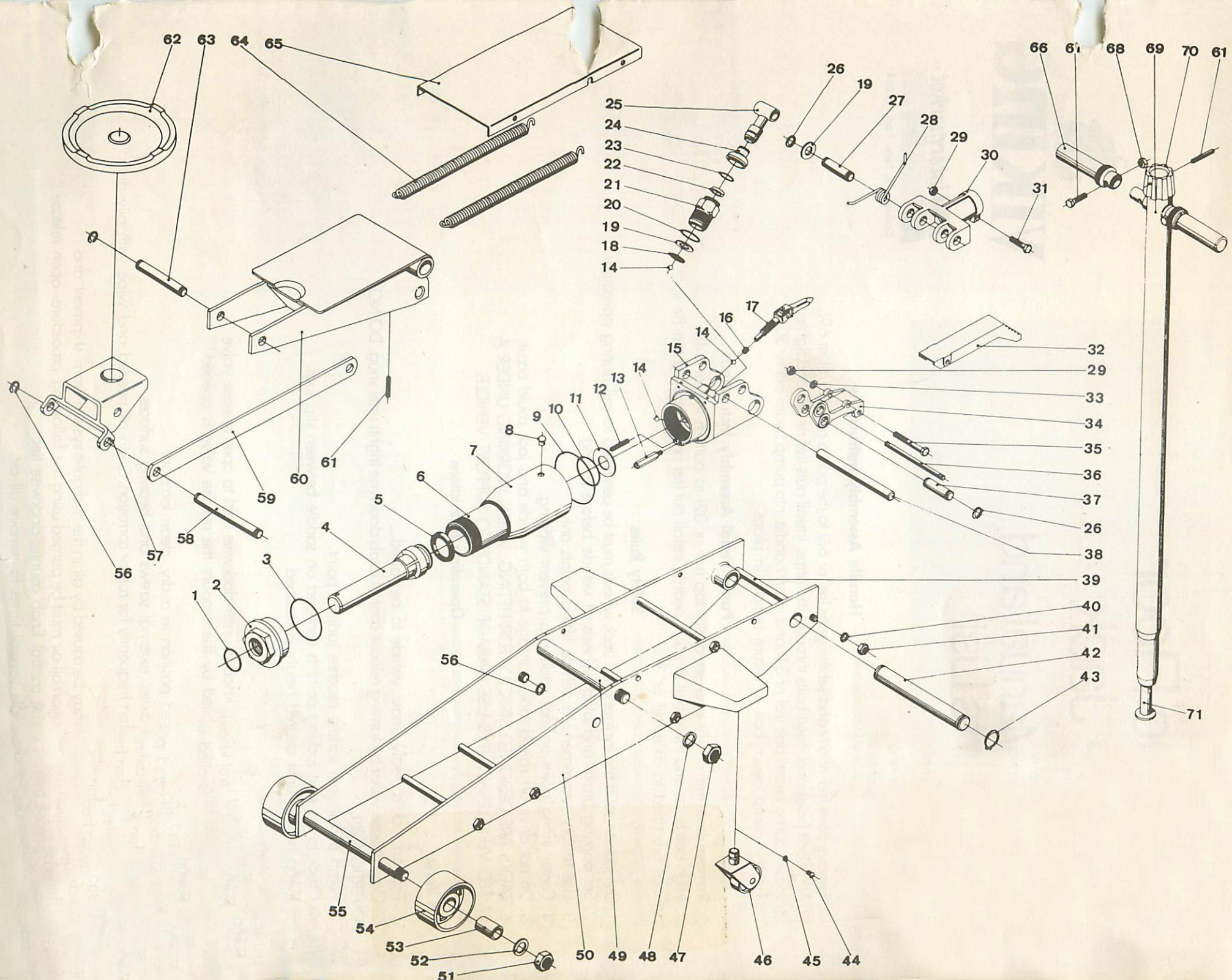


VIKING

ATD
7305

| REF. NR. | PART NAME | PART NR. | | | | | | | |
|----------|--------------------------------|----------|-------------|-----|------------|-----|------------|-----|------------|
| | | QTY | 1 1/2 T 405 | QTY | 2 1/4T 425 | QTY | 4 1/2T 435 | QTY | 6 1/2T 455 |
| 01 | O Ring | 1 | 862218 | 1 | 862218 | 1 | 862220 | 1 | 862327 |
| 02 | Head Nut | 1 | 981010 | 1 | 981010 | 1 | 981040 | 1 | 981060 |
| 03 | O Ring | 1 | 862040 | 1 | 862040 | 1 | 862043 | 1 | 862158 |
| 04 | Lift Piston | 1 | 690020 | 1 | 690020 | 1 | 690048 | 1 | 690067 |
| 04C | Lift Piston, Compl(04 and 05) | 1 | 691020 | 1 | 691020 | 1 | 691048 | 1 | 691068 |
| 05 | Cup | 1 | 832430 | 1 | 832430 | 1 | 832242 | 1 | 832348 |
| 06 | Cylinder Tube | 1 | 916012 | 1 | 916012 | 1 | 916041 | 1 | 916061 |
| 07 | Tank Tube | 1 | 969012 | 1 | 969012 | 1 | 969041 | 1 | 969061 |
| 08 | Plug, Rubber | 1 | 893101 | 1 | 893101 | 1 | 893101 | 1 | 893101 |
| 09 | O Ring | 1 | 862043 | 1 | 862043 | 1 | 862156 | 1 | 862158 |
| 10 | O Ring | 1 | 862137 | 1 | 862137 | 1 | 862232 | 1 | 862236 |
| 11 | Washer | 1 | 905010 | 1 | 905010 | 1 | 905041 | 1 | 905061 |
| 12 | Oil Filter | 1 | 828010 | 1 | 828010 | 1 | 828010 | 1 | 828010 |
| 13 | Overload Valve | 1 | 699018 | 1 | 699018 | 1 | 699018 | 1 | 699018 |
| 14 | Ball | 3 | 824030 | 3 | 824030 | 3 | 824030 | 3 | 824030 |
| 15 | Pump Housing | 1 | 907010 | 1 | 907010 | 1 | 907040 | 1 | 907060 |
| 16 | Packing | 1 | 883205 | 1 | 883205 | 1 | 883205 | 1 | 883205 |
| 17 | Release Valve Shaft | 1 | 688018 | 1 | 688018 | 1 | 688018 | 1 | 688018 |
| 18 | Oil Filter | 1 | 828011 | 1 | 828011 | 1 | 828011 | 1 | 828011 |
| 19 | Washer | 3 | 905011 | 3 | 905011 | 3 | 905011 | 3 | 905011 |
| 20 | O Ring | 1 | 862120 | 1 | 862120 | 1 | 862120 | 1 | 862120 |
| 21 | Pump Cylinder | 1 | 915011 | 1 | 915011 | 1 | 915011 | 1 | 915011 |
| 22 | Cup | 1 | 832313 | 1 | 832313 | 1 | 832313 | 1 | 832313 |
| 23 | O Ring | 1 | 862115 | 1 | 862115 | 1 | 862115 | 1 | 862115 |
| 24 | Dust Seal | 1 | 835010 | 1 | 835010 | 1 | 835010 | 1 | 835010 |
| 25 | Pump Piston | 1 | 689017 | 1 | 689017 | 1 | 689017 | 1 | 689017 |
| 25C | Pump Piston, Compl(22 thru 25) | 1 | 689019 | 1 | 689019 | 1 | 689019 | 1 | 689019 |
| 26 | Track Ring | 6 | 804012 | 6 | 804012 | 6 | 804012 | 6 | 804012 |
| 27 | Axle | 2 | 927092 | 2 | 927092 | 2 | 927092 | 2 | 927092 |
| 28 | Spring (Pair) | 1 | 686801 | 1 | 686801 | 1 | 686801 | 1 | 686801 |
| 29 | Nut | 2 | 873301 | 2 | 873301 | 2 | 873301 | 2 | 873301 |
| 30 | Pump Beam | 1 | 929011 | 1 | 929011 | 1 | 929011 | 1 | 929011 |
| 31 | Bolt | 1 | 866331 | 1 | 866331 | 1 | 866331 | 1 | 866331 |
| 32 | Pedal, Sup. | 1 | 959014 | 1 | 959014 | 1 | 959014 | 1 | 959014 |
| 33 | Washer | 1 | 806040 | 1 | 806040 | 1 | 806040 | 1 | 806040 |
| 34 | Pedal, Inf. | 1 | 959012 | 1 | 959012 | 1 | 959012 | 1 | 959012 |
| 35 | Bolt | 1 | 866339 | 1 | 866339 | 1 | 866339 | 1 | 866339 |
| 36 | Axle | 1 | 927032 | 1 | 927032 | 1 | 927032 | 1 | 927032 |
| 37 | Axle | 1 | 927091 | 1 | 927091 | 1 | 927091 | 1 | 927091 |

| REF. NR. | PART NAME | PART NR. ↓ | | | | | | | |
|----------|---------------------------------------------------|------------|------------|-----|------------|-----|------------|-----|------------|
| | | QTY | 1 1/2T 405 | QTY | 2 1/4T 425 | QTY | 4 1/2T 435 | QTY | 6 1/2T 455 |
| 38 | Axle | 1 | 927095 | 1 | 927095 | 1 | 927096 | 1 | 927096 |
| 39 | Axle | 6 | 927070 | 5 | 927070 | 4 | 927071 | 5 | 927071 |
| 40 | Washer | 12 | 806050 | 10 | 806050 | 8 | 806050 | 10 | 806050 |
| 41 | Nut | 12 | 873400 | 10 | 873400 | 8 | 873400 | 10 | 873400 |
| 42 | Axle | 1 | 927150 | 1 | 927150 | 1 | 927210 | 1 | 927253 |
| 43 | Track Ring | 2 | 804125 | 2 | 804125 | 2 | 804135 | 2 | 804141 |
| 44 | Bolt | 2 | 866103 | 2 | 866103 | 2 | 866207 | 2 | 866207 |
| 45 | Washer | 2 | 806020 | 2 | 806020 | 2 | 806030 | 2 | 806030 |
| 46 | Caster | 2 | 693018 | 2 | 693018 | 2 | 693046 | 2 | 693046 |
| 47 | Nut | 2 | 873700 | 2 | 873700 | 2 | 873800 | 2 | 873800 |
| 48 | Washer | 2 | 806110 | 2 | 806110 | 2 | 806130 | 2 | 806130 |
| 49 | Axle | 1 | 927151 | 1 | 927151 | 1 | 927180 | 1 | 927211 |
| 50 | Frame (Pair) | 1 | 684017 | 1 | 684025 | 1 | 684048 | 1 | 684068 |
| 51 | Nut | 2 | 873601 | 2 | 873601 | 2 | 873700 | 2 | 873700 |
| 52 | Washer | 2 | 806090 | 2 | 806090 | 2 | 806111 | 2 | 806111 |
| 53 | Spacer | 2 | 910151 | 2 | 910151 | 2 | 910171 | 2 | 910171 |
| 54 | Wheel | 2 | 973010 | 2 | 973010 | 2 | 973040 | 2 | 973040 |
| 55 | Axle | 1 | 927130 | 1 | 927130 | 1 | 927181 | 1 | 927181 |
| 56 | Track Ring | 6 | 804012 | 6 | 804012 | 6 | 804119 | 6 | 804119 |
| 57 | Saddle Carrier | 1 | 694018 | 1 | 694018 | 1 | 694046 | 1 | 694046 |
| 58 | Axle | 1 | 927094 | 1 | 927094 | 1 | 927111 | 1 | 927111 |
| 59 | Link | 2 | 983034 | 2 | 983031 | 2 | 983041 | 2 | 983042 |
| 60 | Lift Arm | 1 | 675017 | 1 | 675024 | 1 | 675044 | 1 | 675066 |
| 60C | Lift Arm, Compl(56 Thru 60, 63) | 1 | 676017 | 1 | 676024 | 1 | 676044 | 1 | 676066 |
| 61 | Tension Pin | 2 | 871024 | 2 | 871024 | 2 | 871024 | 2 | 871024 |
| 62 | Saddle | 1 | 670018 | 1 | 670018 | 1 | 670018 | 1 | 670018 |
| 63 | Axle | 1 | 927093 | 1 | 927093 | 1 | 927110 | 1 | 927110 |
| 64 | Spring | 2 | 856667 | 2 | 856667 | 2 | 686802 | 2 | 686802 |
| 65 | Cover | 1 | 921011 | 1 | 921023 | 1 | 921041 | 1 | 921060 |
| 66 | Grip | 2 | 686053 | 2 | 686053 | 2 | 686053 | 2 | 686053 |
| 67 | Bolt | 2 | 866119 | 2 | 866119 | 2 | 866119 | 2 | 866119 |
| 68 | Nut | 2 | 873100 | 2 | 873100 | 2 | 873100 | 2 | 873100 |
| 69 | Handle, Cmpl (61, 66 Thru 71) | 1 | 678019 | 1 | 678019 | 1 | 678019 | 1 | 678019 |
| 70 | Knob | 1 | 947010 | 1 | 947010 | 1 | 947010 | 1 | 947010 |
| 71 | Handle, Internal | 1 | 677019 | 1 | 677019 | 1 | 677019 | 1 | 677019 |
| | Repair Kit (1, 3, 5, 8, 9 10, 16, 20, 22, 23, 24) | | 683012 | | 683012 | | 683047 | | 683067 |
| | Hydraulic Unit (1 Thru 25) | | 696020 | | 696020 | | 696047 | | 696067 |
| | Hydraulic Unit, Compl (1 Thru 38) | | 697021 | | 697021 | | 697044 | | 697067 |



Hydraulic Floor Service Jack

Owner's Manual and Spare Parts List



VIKING



Guiderland, New York, 12084

Handle Assembly Instructions

1. Remove bolts (ref nr 67) and set the grips (ref nr 66) to the pump handle (ref nr 69).
2. Align bolt holes and insert bolts through the grips, install nuts (ref nr 68) and tighten.
3. Loosen pump beam bolt (ref nr 31) and insert handle into pump beam (ref nr 30).
4. Tighten pump beam bolt to secure handle in place.

Pump Pedal Assembly Instructions

1. Remove bolt (ref nr 35) and set pedal top (ref nr 32) to bottom (ref nr 34).
2. Align bolt holes and insert bolt through pedals, install nut (ref nr 29) and tighten. Be sure springs are fitted to axle (ref nr 36).

Safety Rules

1. Use jack on solid flat surface only. Jack wheels must be permitted to roll during operation.
2. Set parking brake and block wheels of vehicle before raising.
3. Use factory recommended vehicle lifting points only.
4. Center lifting point on jack saddle to prevent slipping.
5. Do not drive off raised jack, damage to both vehicle and jack could occur.
6. JACKS ARE DESIGNED STRICTLY FOR LIFTING. WHEN WORKING UNDER A RAISED VEHICLE ALWAYS USE GARAGE STANDS TO SUPPORT VEHICLE.

Operating Instructions

To Raise

1. Position jack correctly under vehicle to be raised.
2. Close release valve by turning release control knob clockwise (right) until snug. DO NOT OVERTIGHTEN.
3. Pump pedal until saddle reaches jacking point.
4. Check to be sure jacking point is centered on saddle between slip lugs.
5. Pump handle until desired height is reached.

To Lower

1. Slowly turn release control knob counter-clockwise (left) to open release valve.
2. Lowering speed is controlled by the amount the release valve is opened.

Maintenance

1. Store jack in fully lowered position in a dry, clean location.
2. Lubricate frequently all axles, external screws and bearing surfaces.
3. Inspect lift and pump piston frequently for rust or corrosion. Clean as needed and wipe with oily cloth.

Service

1. Poor lifting performance may be caused by air in the hydraulic system from shipment and handling. To correct this situation all air must be purged using the following procedure: open release valve fully by turning release control knob counter-clockwise (left). Using full stroke pump handle several times to remove all air.