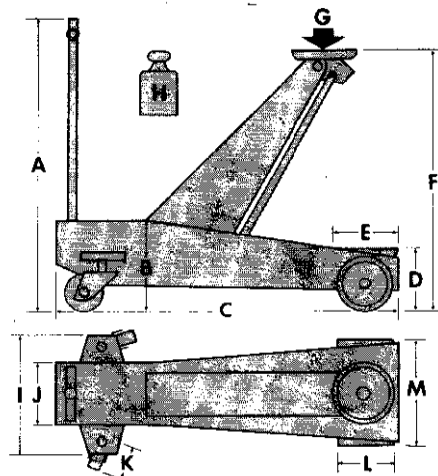


1.FEATURES

A=46"21/32
B=6"11/16
C=30"5/16
D=5"1/8
E=6"19/64
F=21"1/16
G=4,400 lbs
H=85 lbs
I= 17"21/64
J= 7"9/32
K=2"61/64
L=3"5/8
M=10"7/16

Specifications
subject to change
without
prior notice.



Model 31 has both end lift safety valve and safety overload valve.

2.OPERATING INSTRUCTIONS TO LIFT

- 2.1.Position service jack under vehicle to be raised.
- 2.2.Pump with handle until desired height is reached.

TO LOWER

- 2.3.Slowly turn release valve control knob counter-clockwise (left).
- NOTE: Lowering speed is controlled by the amount the control knob is turned.

3.MAINTENANCE SERVICE

- 3.1.Store jack in a dry-clean location and in totally lowered position.
- 3.2.Lubricate frequently all bearing surfaces.
- 3.3.To bleed air from unit to obtain full pump stroke: Open release valve control knob and pump handle several times.

VIKING

OWNER'S MANUAL SERVICE HYDRAULIC JACK

Model 31
Capacity 2 ton



Guilderland, New York, USA

Issued: JUNE, 30th 1980

- 3.4.To add oil: Place jack on level surface in fully lowered position.

Remove metal top cover, remove rubber plug in top of power unit and fill reservoir with hydraulic jack oil. DO NOT USE BRAKE FLUID. Replace rubber plug and metal cover and perform step 3.3 to bleed air from unit.

4.SAFETY RULES

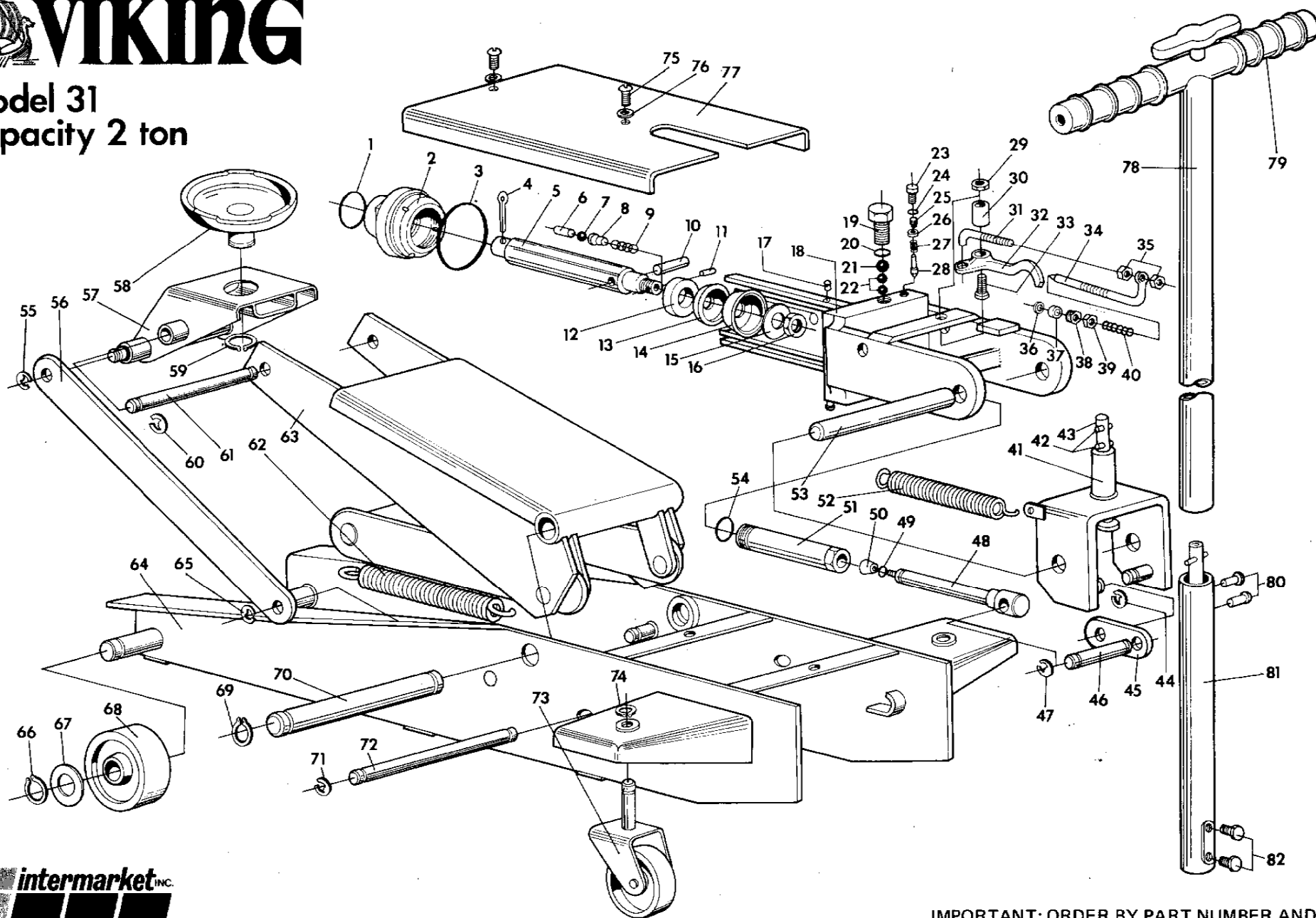
- 4.1.Set parking brake and block wheel before attempting to raise vehicle.
 - 4.2.Position jack on solid, flat surface.
 - 4.3.Jack position must permit jack wheels to roll during raising.
 - 4.4.The load must be put centrally on the saddle. Contact between vehicle and saddle have to be firm and stable. Use factory recommended jacking points only.
 - 4.5.IMPORTANT: Jacks are designed strictly for lifting operations. WHEN WORKING UNDER A RAISED VEHICLE ALWAYS USE GARAGE STANDS.
- IMPORTANT: ORDER BY PART NUMBER AND NAME.

SPARE PARTS LIST

REF. NR.	PART NAME	QTY.	PART NR.	REF. NR.	PART NAME	QTY.	PART NR.
01	O - RING	1	4880	44	TRACK RING	2	5110
02	HEAD NUT	1	6121	45	PUMP LINK	2	6711
03	O - RING	1	4940	46	AXLE	1	6721
04	SPLIT PIN	1	5510	47	TRACK RING	2	5110
05	PISTON	1	7801	48	PISTON	1	3592
05C	PISTON, COMPL. (5/16)	1	3582	48C	PUMP PISTON, COMPL. (48+49+50)	1	5282
06	PIN	1	2011	49	O - RING	1	2840
07	BALL	1	3070	50	CUP	1	2660
08	SPRING GUIDE	1	2001	51	PUMP CYLINDER	1	6531
09	SPRING	1	3140	51C	PUMP, COMPL. (48C+51)	1	5292
10	PIN	1	2021	52	SPRING	1	5370
11	PIN	1	2011	53	AXLE	1	6701
12	PISTON COLLAR	1	5021	54	O - RING	1	3470
13	LEATHER CUP	1	2710	55	TRACK RING	2	5110
14	RUBBER CUP	1	6501	56	PARALLEL LINK	2	6881
15	WASHER	1	1261	57	SADDLE CARRIER	1	3712
16	NUT	1	3230	58	SADDLE	1	3772
17	RUBBER PLUG	1	3461	59	TRACK RING	1	5180
18	PUMP HOUSE	1	3622	60	TRACK RING	2	5110
19	VALVE PLUG	1	5420	61	AXLE	1	6861
20	O - RING	1	4470	62	SPRING	2	5390
21	BALL	1	3080	63	ARM	1	3682
22	BALL	2	3100	64	FRAME	1	3632
23	OVERLOAD PLUG	1	5400	65	TRACK RING	2	5110
24	O - RING	1	6300	66	TRACK RING	2	5130
25	SCREW	1	6670	67	WASHER	2	3571
26	NEEDLE GUIDE	1	7991	68	WHEEL	2	7081
27	SPRING	1	3140	69	TRACK RING	2	5140
28	NEEDLE	1	6651	70	AXLE	1	7091
29	NUT	1	5540	71	TRACK RING	2	5110
30	SPACER	1	6691	72	AXLE	1	7101
31	SWIVEL SCREW	1	6671	73	CASTER	2	2492
32	RELEASE LEVER	1	6681	74	TRACK RING	2	5120
33	BOLT	1	5410	75	BOLT	2	6270
34	RELEASE NEEDLE	1	6661	76	WASHER	2	6280
35	NUT	2	3220	77	COVER	1	7111
36	WASHER	1	5550	78	HANDLE PART, SUP.	1	5262
37	PACKING	1	6421	78C	HANDLE, COMPL. (78/82)	1	3722
38	NIPPLE	1	5401	79	GRIP	2	5590
39	NUT	1	3220	80	RIVET	2	4800
40	SPRING	1	4990	81	HANDLE PART, INF.	1	5272
41	FORK	1	3612	82	BOLT	2	5400
41C	FORK COMPL. (41+42+43)	1	3602	-	REPAIR KIT (1+3+13+14+17+20+24+37+49+50+54)	1	5502
42	TENSION PIN	2	3120	-	POWER UNIT (1/28+34/40+51C+54)	1	5512
43	CAM	1	2392	-	POWER UNIT, COMPL. (1/54)	1	5522



Model 31
Capacity 2 ton



intermarket INC.
Guilderland, New York, USA

IMPORTANT: ORDER BY PART NUMBER AND NAME.
Specifications are subject to change without prior notice.