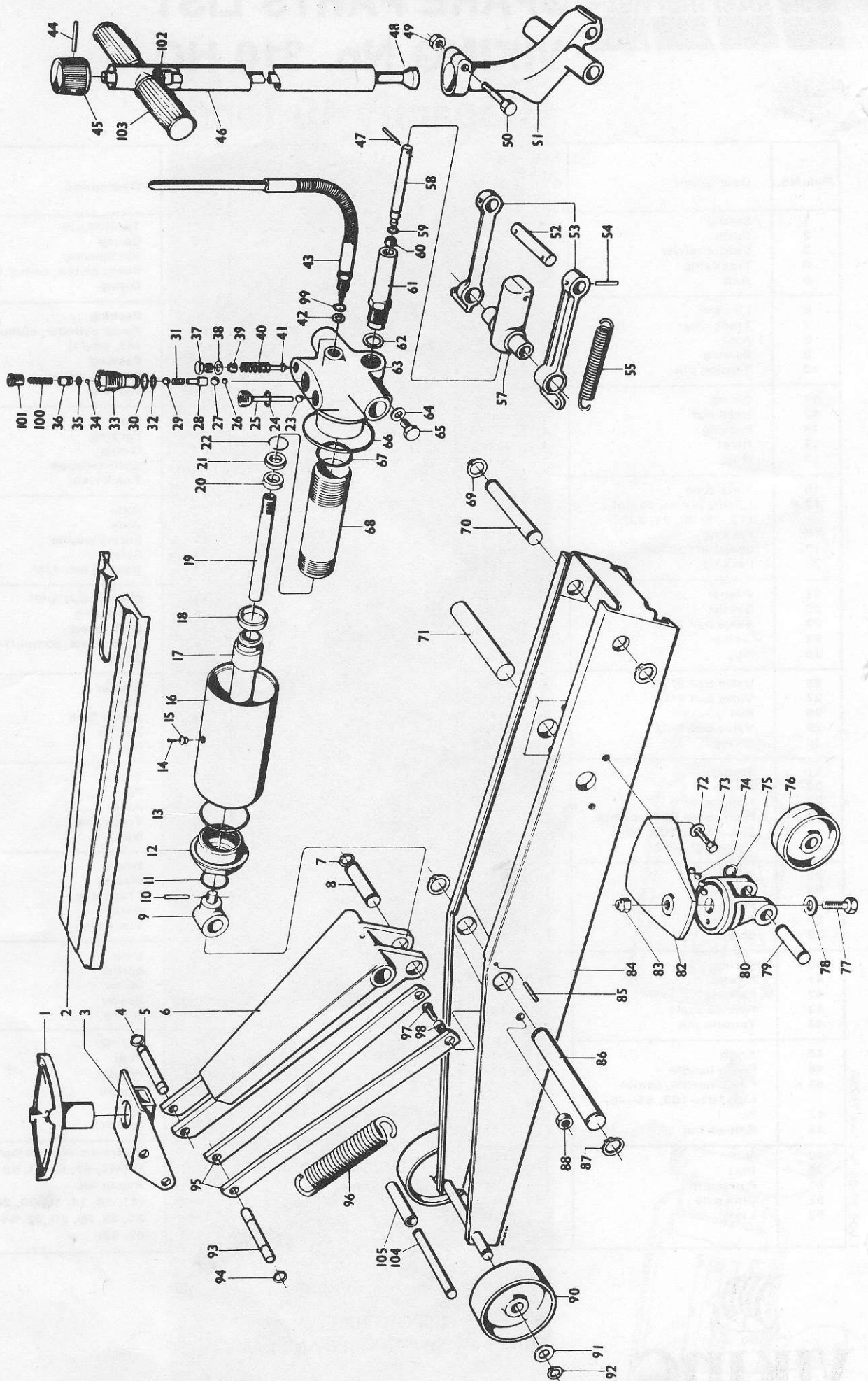


VIKING No. 310 HC



SPARE PARTS LIST

VIKING No. 310 HC

Capacity 10 tons

Ref. No.	Description	Qty.	Part. No.	Ref. No.	Description	Qty.	Part. No.
1	Saddle	1	13608	54	Tension pin	2	10159
2	Cover	1	13622	55	Spring	2	13250
3	Saddle carrier	1	13611	57	Pin housing	1	13446
4	Track ring	2	13902	58 K	Pump piston, compl.(58-60)	1	13963
5	Axle	1	16442	59	O-ring	1	13815
6	Lift arm	1	13610	60	Packing	1	8288
7	Track ring	2	13903	61 K	Pump cylinder, compl. (47, 58-61)	1	19733
8	Axle	1	16440	62	Packing	1	10406
9	Bearing	1	13407	63	Pump housing	1	14933
10	Tension pin	1	11095	64	Packing	1	_____
11	O-ring	1	14081	65	Plug	1	_____
12	Head nut	1	13968	66	Packing	1	14936
13	Packing	1	4036	67	O-ring	1	_____
14	Rivet	1	20266	68	Cylinder tube	1	_____
15	Plug	1	20253	69	Track ring	2	13900
16	Tank tube	1	14935	70	Axle	1	13646
17 K	Lifting piston, compl. (17, 18, 20, 21, 22)	1	13657	71	Axle	1	13614
18	Packing	1	13680	72	Spring washer	4	10437
19	Speed lift piston	1	14808	73	Screw	4	13546
20	Packing	1	14804	74	Bearing ball 1/4"	33	_____
21	Washer	1	14803	74	Bearing ball 3/8"	30	14547
22	Circlip	1	14805	75	Track ring	2	16445
23	Valve ball 7/16"	1	10412	76	Link wheel	2	16783
24	O-ring	1	12717	76 K	Link wheel, compl.(74-83)	2	13617
25	Plug	1	14094	77	Screw	2	13547
26	Valve ball 5/16"	1	3740	78	Washer	2	10839
27	Valve ball 7/16"	1	10412	79	Axle	2	16439
28	Ball bracket	1	16480	80	Castor fork	2	13510
29	Valve ball 7/32"	1	5494	82	Carrier	2	13511
30	O-ring	1	16584	83	Nut	2	22555
31	Spring	1	3790	84	Frame	1	17914
32	O-ring	1	12717	85	Pin	2	10422
33	Housing	1	20122	86	Axle	1	13644
33 K	High speed valve, compl. (30, 32-36, 100, 101)	1	20124	87	Track ring	2	13903
34	Valve ball 5/32"	1	16060	88	Nut	2	17033
35	O-ring	1	20111	90	Wheel	2	16787
36	Plunge	1	20110	91	Washer	2	12449
37	Plug	1	16536	92	Track ring	2	13568
38	Packing	1	16118	93	Axle	1	16441
39	Screw	1	8350	94	Track ring	2	13901
40	Spring	1	8429	95	Link	2	13621
41	Needle	1	8351	96	Spring	1	13662
42	Packing	1	11286	97	Screw	2	17064
43	Release shaft	1	14044	98	Spacer	2	13652
44	Tension pin	1	13561	99	O-ring	1	7594
45	Knob	1	20209	100	Spring	1	19096
46	Pump handle	1	20222	101	Plug	1	15799
46 K	Pump handle, compl. (48, 101-103, 44-46)	1	20224	102	Washer	1	20076
47	Pin	1	11117	103	Handle	2	15058
48	Release bar	1	20217	104	Axle	1	16746
49	Nut	1	14931	105	Spacer	1	16747
50	Bolt	1	16117		Hydraulic unit, compl. (11-43, 47, 58-68, 99, 100)	1	13656
51	Pump arm	1	13297		Repair kit (11, 13, 14, 18, 20, 24, 30, 34, 38, 59, 60, 62, 64, 66, 67, 99)	1	17470
52	Link axle	1	13223				
53	Link	2	13193				

1.000 77-06 TunaTryck 11280

See other side for model breakdown illustration

IMPORTANT
ORDER BY PART NUMBER AND NAME



Intermarket Inc. P. O. Box 5282, Albany, New York 12205