

Operating Instructions and Parts List

2 1/4 TON CAPACITY SERVICE JACK



CAUTION

THIS JACK IS DESIGNED FOR LIFTING PURPOSES ONLY. AFTER JACKING, ALWAYS USE SAFETY STANDS TO SUPPORT LOAD BEFORE MAKING REPAIRS. FOR YOUR SAFETY — DO NOT OVERLOAD BEYOND RATED CAPACITY.

OPERATING INSTRUCTIONS

IMPORTANT: Sometimes during shipment and handling, air gets into the hydraulic system, causing poor lifting performance. Purge any air from the system by fully opening Release Valve (turn handle counterclockwise as shown), then, while holding the saddle down, operate pump handle rapidly several times.

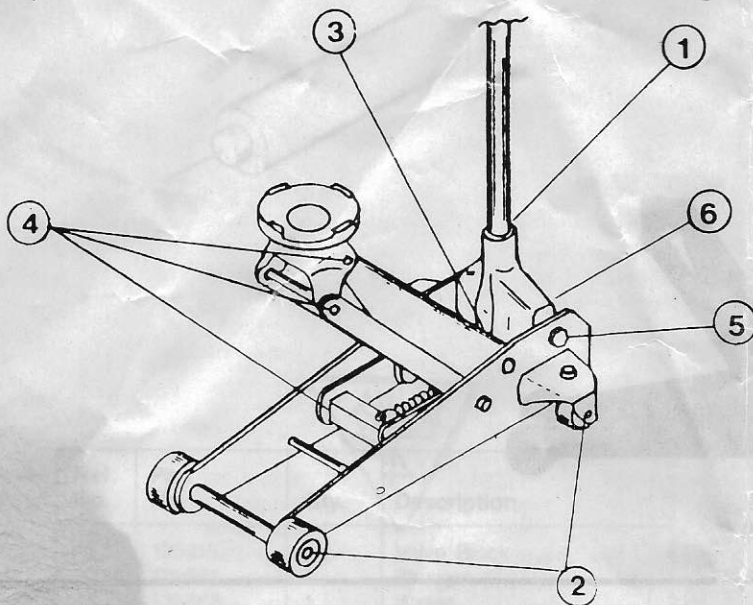
TO RAISE JACK

1. Turn the operating handle clockwise until release valve closes. Do not over tighten the valve.
2. Place jack directly under object to be lifted so that saddle takes up weight firmly and centrally. Check positioning under slight load to make sure jack will not slip when in use.
3. Raise jack to required height. After lifting use jack stand to hold load for any length of time.

TO LOWER JACK

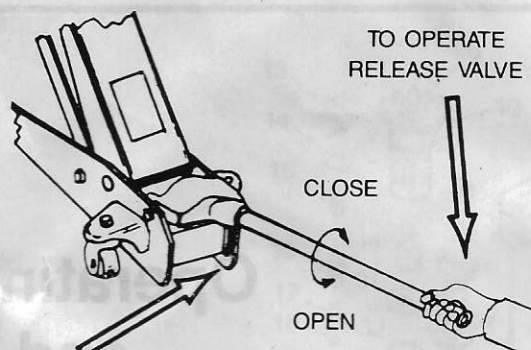
Slowly turn the operating handle counterclockwise. The speed of lowering is controlled by the amount valve is opened.

LUBRICATION POINTS

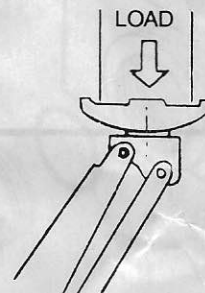


Before operating the jack lubricate the points indicated in the diagram. Use lubricants as indicated by the following numbers as marked on the diagram.

1. **HANDLE.** Use light oil on moving parts and lightly grease handle at point it fits into the handle socket.
2. **WHEELS.** Use light oil on axles and caster bearings.



TO OPERATE JACK INSERT HANDLE END INTO HANDLE SOCKET AND PUMP JACK HANDLE TO RAISE LOAD



CORRECT LOAD CONTACT

3. **LIFTING ARM.** Inject grease into grease fitting.
4. **SADDLE AND LINKAGE.** Use light oil on all moving and pivoting parts.
5. **HANDLE SOCKET PIVOT BOLTS.** Use light oil to lubricate pivot bolts.
6. **PLUNGER AND PLUNGER PIN.** Use grease to lubricate connection between pump plunger and pin in handle socket.

NORMAL MAINTENANCE PROCEDURES

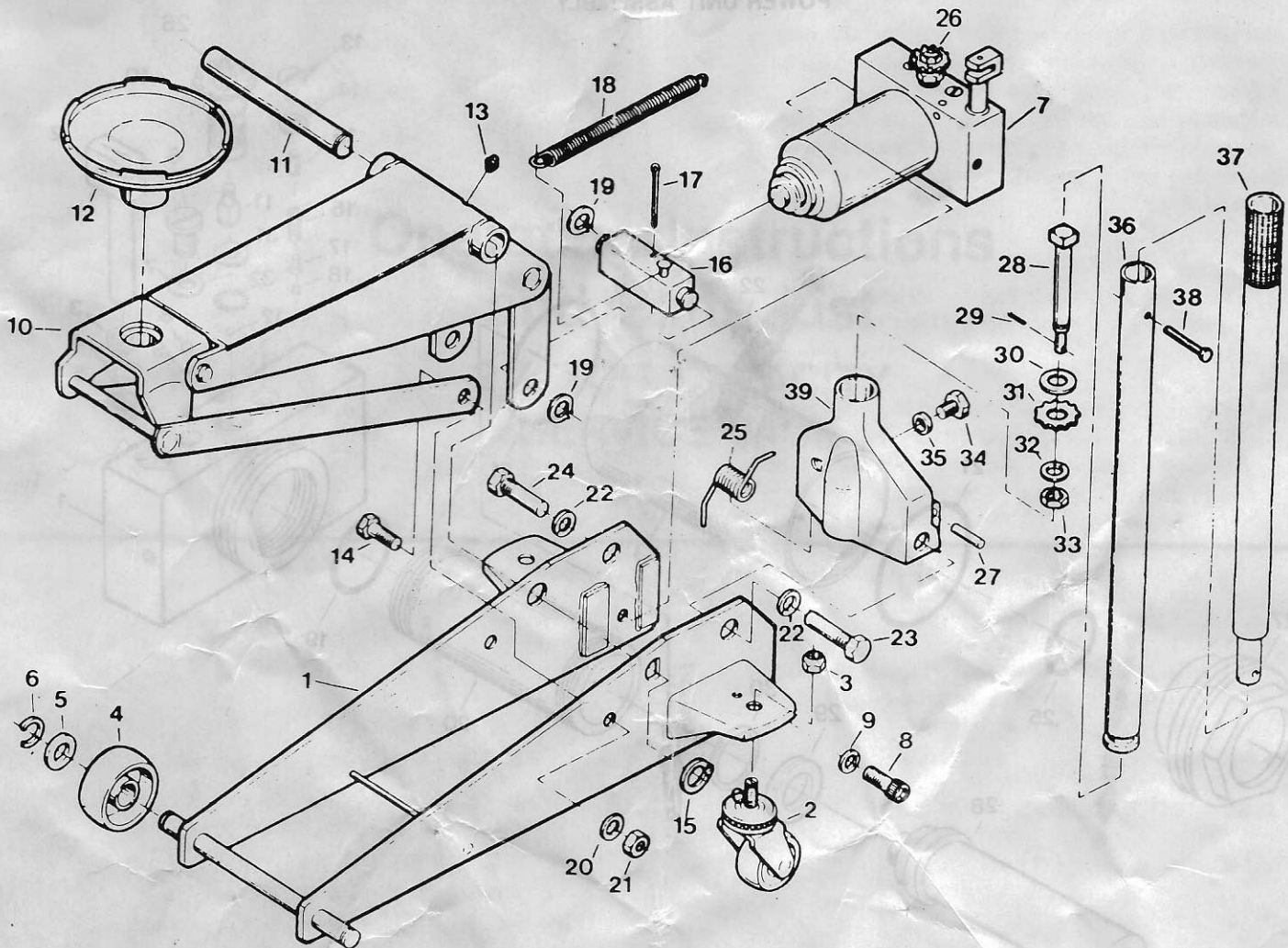
HYDRAULIC OIL. Always use good quality hydraulic jack oil. If possible do not mix the type of oil. At no time use any other type of oil or fluid. When filling with hydraulic oil do not permit dirt or any other substance to enter the hydraulic system.

Check the hydraulic system every 4 months to make sure it is free from corrosion. If corrosion is present clean the part and wipe it with an oily cloth. Always store the jack in fully lowered position.

CAUTION: This jack is designed for lifting purposes only. It must not be used as a jack stand to hold load for any prolonged period.

- After jacking always use safety stands to support load.
- Always use jack on level solid ground. Do not use jack on slope or angle.
- Do not attempt to move jack when it is under load.
- Do not adjust safety valve. Return jack to service agent for any adjustments.
- Do not make alterations of any kind to design or structure of jack.
- Do not overload the jack beyond its rated capacity.

REPAIR PARTS LIST



Ref. No.	Part No.	Qty.	Description
1	125561	1	Side Plate Weldment
2	125523	2	Caster Assembly
3	125524	2	Locknut
4	125520	2	Wheel
5	125521	2	Washer (Axle)
6	125522	2	Retaining Ring
7	125816	1	Power Unit Assembly
8	125532	2	Socket Head Cap Screw
9	125531-1	2	Split Lockwasher
10	125686	1	Lift Arm Assembly
11	125534	1	Shaft, Arm
12	125543	1	Saddle
13	125541	1	Grease Fitting
14	125526	2	Bolt, Link
15	125536-1	1	Retaining Ring
16	125538	1	Block, Link (Ram)
17	125589-1	1	Cotter Pin
18	125553	1	Return Spring
19	125536-1	2	Retaining Ring
20	125531-2	2	Lockwasher

Ref. No.	Part No.	Qty.	Description
21	125530	2	Hex Nut
22	125531-3	2	Lockwasher
23	125535	1	Bolt
24	125535	1	Bolt
25	125590	1	Torsion Spring
26	125586-1	1	Valve Gear
27	125587	1	Plunger Pin
28	125581	1	Gear Shaft
29	125589-2	1	Cotter Pin
30	125582	1	Washer
31	125583	1	Gear, Handle Socket
32	125577	1	Lockwasher
33	125591	1	Hex Nut
34	125585	1	Handle Bolt
35	125584	1	Spacer
36	125579	1	Handle, Lower
37	125578	1	Handle, Upper
38	125580	1	Hex Head Screw
39	125593	1	Handle Socket

OPERATING INSTRUCTIONS

IMPORTANT: Sometimes during shipment and handling, air gets into the hydraulic system, causing poor lifting performance. Purge any air from the system by fully opening Release Valve (turn handle counterclockwise as shown), then, while holding the saddle down, operate pump handle rapidly several times.

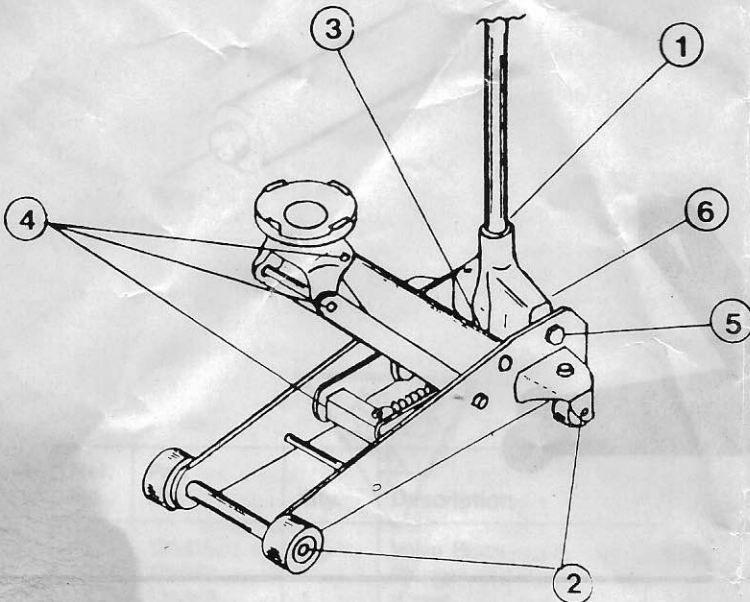
TO RAISE JACK

1. Turn the operating handle clockwise until release valve closes. Do not over tighten the valve.
2. Place jack directly under object to be lifted so that saddle takes up weight firmly and centrally. Check positioning under slight load to make sure jack will not slip when in use.
3. Raise jack to required height. After lifting use jack stand to hold load for any length of time.

TO LOWER JACK

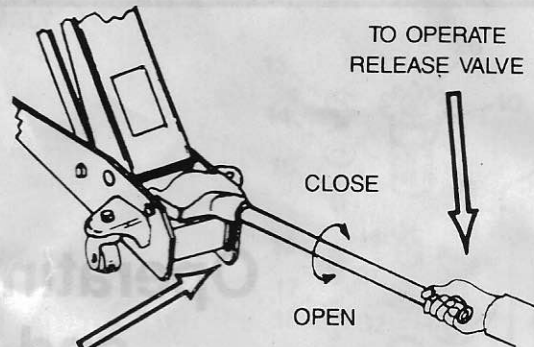
Slowly turn the operating handle counterclockwise. The speed of lowering is controlled by the amount valve is opened.

LUBRICATION POINTS

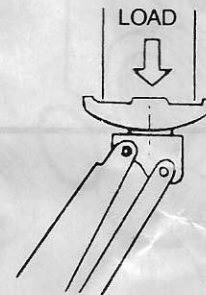


Before operating the jack lubricate the points indicated in the diagram. Use lubricants as indicated by the following numbers as marked on the diagram.

1. **HANDLE.** Use light oil on moving parts and lightly grease handle at point it fits into the handle socket.
2. **WHEELS.** Use light oil on axles and caster bearings.



TO OPERATE JACK INSERT HANDLE END INTO HANDLE SOCKET AND PUMP JACK HANDLE TO RAISE LOAD



CORRECT LOAD CONTACT

3. **LIFTING ARM.** Inject grease into grease fitting.
4. **SADDLE AND LINKAGE.** Use light oil on all moving and pivoting parts.
5. **HANDLE SOCKET PIVOT BOLTS.** Use light oil to lubricate pivot bolts.
6. **PLUNGER AND PLUNGER PIN.** Use grease to lubricate connection between pump plunger and pin in handle socket.

NORMAL MAINTENANCE PROCEDURES

HYDRAULIC OIL. Always use good quality hydraulic jack oil. If possible do not mix the type of oil. At no time use any other type of oil or fluid. When filling with hydraulic oil do not permit dirt or any other substance to enter the hydraulic system.

Check the hydraulic system every 4 months to make sure it is free from corrosion. If corrosion is present clean the part and wipe it with an oily cloth. Always store the jack in fully lowered position.

CAUTION: This jack is designed for lifting purposes only. It must not be used as a jack stand to hold load for any prolonged period.

- After jacking always use safety stands to support load.
- Always use jack on level solid ground. Do not use jack on slope or angle.
- Do not attempt to move jack when it is under load.
- Do not adjust safety valve. Return jack to service agent for any adjustments.
- Do not make alterations of any kind to design or structure of jack.
- Do not overload the jack beyond its rated capacity.

SEAL PARTS for 2ton heavy duty
floor jack

Ref.No.	Part No.	Qty	Description
3	125563	1	Wiper
4	125562	1	Back-Up Ring
5	125548-3	1	O-Ring
7	125307	1	Washer
5	125543-7	1	O-Ring
9	125552	1	O-Ring Retainer
0	125548-2	1	O-Ring