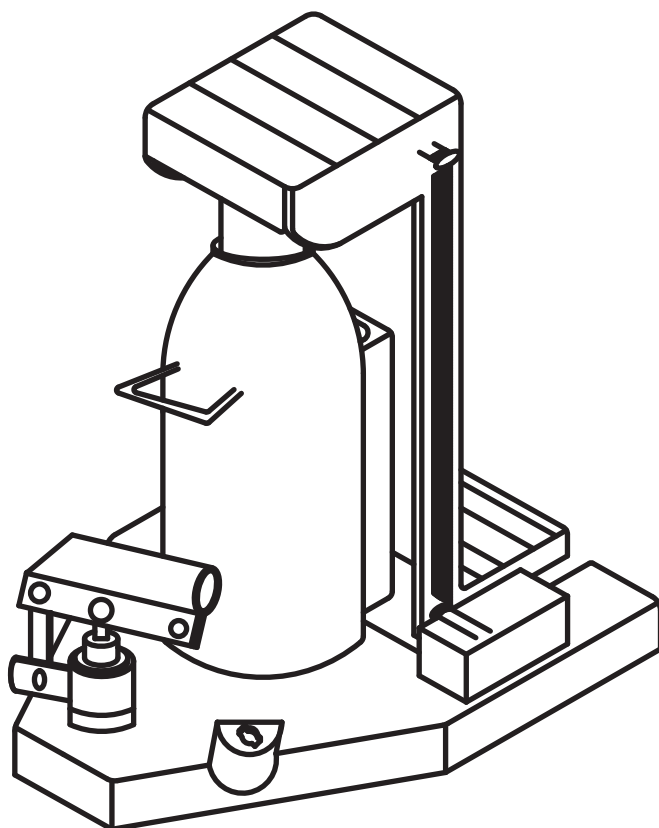


Instruction Manual



I. Instructions

For rising

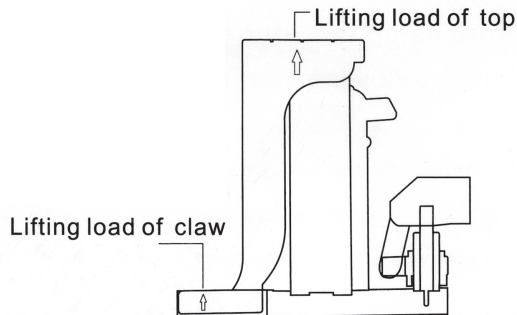
- 1.Stuck the handlebar on the oil drain valve;
- 2.Screw the oil drain valve clockwise(never screw too tightly);
- 3.Insert the handlebar on the handle holder;
- 4.Seesaw the handlebar for lifting.

For dropping

- 1.Stuck the handlebar on the oil drain valve;
- 2.Unscrew the oil drain valve anti-clockwise and slowly;
- 3.Prohibit unscrewing the valve for more than 3 circles.

II. Technical parameters of claw type hoisting jack

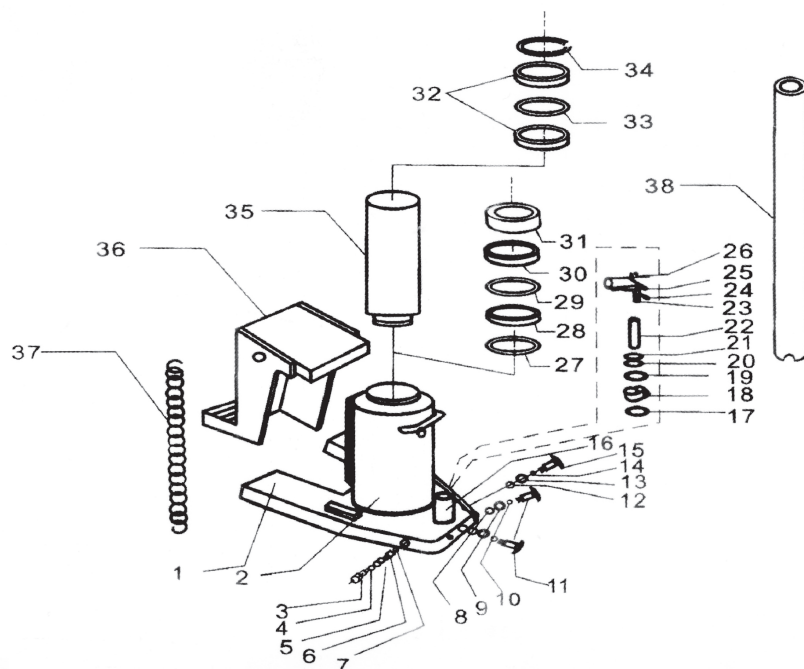
Model	Toe Capacity	Head Capacity	Toe Min. Height (mm)	Toe Max. Height (mm)	Head Min. Height (mm)	Head Max. Height (mm)	Base Size (mm)
TRJ7102-S	2Ton	3Ton	24	105	235	340	200x134
TRJ7105-S	5Ton	6Ton	25	135	288	427	248x190
TRJ7110-S	10Ton	12Ton	30	147	325	472	280x210
TRJ7115-S	15Ton	18Ton	35	142	348	490	290x240
TRJ7125-S	25Ton	30Ton	40	135	350	484	325x280



III.Warning

Before using this lifting jack, please read the following attentions carefully

- (1) Prohibit from any unwarranted pressure regulating, or otherwise the lifting jack maybe damaged or its safety will be influenced;
- (2) Only use this jack on a fixed even surface, prohibit using it on lossen, soft or inclined surface;
- (3) Try to maintain the heavy article as low as possible;
- (4) No adding of loading on the weight sustained by the jack;
- (5) Avoid sudden stop of dropping in case of damaging the jack;
- (6) Keep the product clean, handle it with care, avoid any crash or throwing of the product;
- (7) Always remember to add lubricate to the guide rail before using the jack;
- (8) Recede the piston rod after usage in order to guarantee a longer lifespan of the jack.



Item No.	Name	Quantity
1	Base Plate	1
2	Machine body	1
3	Safety valve bolt	1
4	Safety valve O ring	1
5	Safety valve spring	1
6	Ball valve seat	1
7	Φ 4 steel ball	1
8	Φ 5 steel ball	2
9	Oil absorption spring	2
10	Oil absorption O ring	2
11	Oil absorption bolt	2
12	Φ 6 steel ball	1
13	Pressure relief spring	1
14	Pressure relief O ring	1
15	Pressure relief bolt	1
16	Pump body	1
17	Pump gasket	1
18	Slewing ring	1
19	Lower ring of pump body	1
20	Nylon check ring	1

Item No.	Name	Quantity
21	Pump core O ring	1
22	Pump core	1
23	Spindle	1
24	Bolt for fixation(long)	1
25	Bolt for fixation(short)	1
26	Open bolt	1
27	Axis check ring	1
28	Gasket	1
29	Piston O ring	1
30	Bowl-type gasket	1
31	Piston ring	1
32	Baffle ring	1
33	Piston rod O ring	1
34	Check ring for holes	1
35	Piston rod	1
36	Claw block	1
37	Tension spring	1
38	Operating crank	1