

OWNER'S MANUAL

Torin™
BIG RED JACKS

ANSI/ASME
INSTRUCTIONS FOR USE

12-TON DOUBLE RAM BOTTLE JACK

24,000 LB.
CAPACITY
LIFTING
RANGE:
9" - 23-11/16"



Torin™
BIG RED JACKS

Torin Jacks, Inc.
Ontario CA. 91761

FOR CUSTOMER SERVICE
1-888-44-TORIN
MADE IN CHINA

1. IMPORTANT SAFETY WARNINGS

The jacks have the agreement about the static test (1.5 times of the normal load) and the dynamic test (1.1 times of the normal load).

Warning, raising the vehicle from the ground is a dangerous operation, which must be carried out with extreme care!

Before raising the vehicle, it is necessary to:

1. read all the instructions given in this manual;
2. read all the instructions given in the manual on the use and maintenance of the vehicle, which correspond to the operations of replacing the wheels.

WARNING:

- Do not raise the vehicle if it is on a road that is not horizontal or on a road whose base is not solid and firm.
- Do not raise the vehicle without having first locked one of the wheels (in the front and rear) which will remain in contact with the ground, by means of the appropriate wheel locking devices, and without having engaged the hand brake.
- Do not raise the vehicle without having correctly located the jacking points that are found under the vehicle, and that are shown in the manual for the use and maintenance of the said vehicle.
- When raising the vehicle do not stay too close to the jack. Operate the lever by gripping it at its end.
- Do not raise any vehicle whose weight is heavier than maximum load indicated on the jack and expressed in tons.

NEVER GO UNDER A VEHICLE THAT HAS BEEN RAISED BY THE JACK!

2. JACK LABEL

The jack is equipped with a label (A) that contains illustrated information for a safe use of the hydraulic jack.

The manufacturer's name and his address.
Maximum load.

1. EC markings-indicate that the jack complies with the safety norms.
2. Warning-it is necessary to read the instructions in this manual and the instructions in the manual for the use and maintenance of the vehicle before using the jack.
3. Do not raise the vehicle on a road that is not horizontal.
4. Before raising the vehicle, it is necessary to lock one of the wheels, that will stay in contact with the ground, by means of the appropriate wheel locking devices (front and rear).
5. In order to raise the vehicle to the ground, it is necessary to be on a solid, firm and horizontal road base, to have the exhaust valve closed (verify that it is closed by rotating the valve clockwise with the lever that has been supplied), to ensure the upper adjusting valve, should the jack come supplied with one, in order to locate nearer to the raising point of the vehicle. Proceed by pumping the jack, moving the lever up and down.



6. NEVER GO UNDER A VEHICLE THAT HAS BEEN RAISED BY THE JACK.

7. To lower the vehicle to the ground, rotate the exhaust valve in an anti-clockwise direction with the handle that has been supplied, extract the jack from the vehicle and allow the pistons to go back in completely, by forcing them with the weight of the body, and the feet.

8. Oil level check-the type of oil used for the jack is HRD ST15M and the level must be at the side of the hole that is covered by a removable rubber bung.

The drawing number of the jack for the manufacturer of your vehicle.

3. JACK MARKINGS

On the other side of the colored label, there is a marking (B) which shows:

1. our name and address.
2. the model number of the product.
3. the maximum load expressed in tons.
4. safety warning.

Should there be any complaints, please contact Northern at the above mentioned address and give the marking details.

4. CONDITIONS AND LIMITS OF USE

The hydraulic jack was designed and built to raise a part of the vehicle, in case of emergency, to replace the wheels. For this reason, jacking points, that are shown in the manual for the use and maintenance of the vehicle, are found under the vehicle.

The hydraulic jack must not be used for any other reason.

The jack must be used by placing its larger base (D) on solid, firm and horizontal ground. Soft ground may not guarantee enough raising reaction, and the jack could therefore sink into the ground, thus not allowing the vehicle to be raised. Ground that is not horizontal may not guarantee enough stability for the jack, causing it to overturn.

Should you find yourself on ground that is not firm or horizontal, it would be necessary to move to a more suitable ground, otherwise notify a vehicle breakdown.

The hydraulic jack was designed and built to work at temperatures ranging from -40°C to +55°C. In situations where the temperature does not come within this range, we suggest calling breakdown assistance.

The hydraulic jack is equipped with a safety valve which does not allow loads to be raised that are heavier than the maximum shown on the colored label. Therefore, should the vehicle be overloaded, the jack might not work and we suggest calling breakdown assistance.

Some hydraulic jacks are equipped with a lifting handle for manual transportation, which ensures a safe handling of the equipment. Whilst transporting jacks that are without handles, grip the flat base (D) with one hand and the cylindrical tank (E) of the jack with the other hand.

5. USES AND POSITIONING INSTRUCTIONS OF THE JACK

The jack must only be used when the vehicle has to be raised in order for the wheels to be changed.

Before proceeding, it is necessary to read carefully 1. IMPORTANT SAFETY WARNINGS that are found at the beginning of this manual, and the paragraph concerning 4. CONDITIONS AND LIMITS OF USE.

7. JACK MAINTENANCE

It is necessary to carry out the following maintenance operations every 6 months.

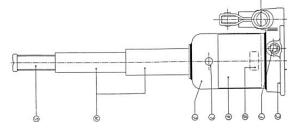
1. Check the oil level of the jack, by removing the rubber bung (L) and checking that the oil is level with the bottom of the hole, all the while keeping the jack level on the ground.
The type of oil used for the jack is HRD ST15M should it be necessary to top the oil up.
2. Refit the rubber bung (L).
3. Check that the exhaust valve is closed by means of the handle, by inserting it into the correct location (F) and rotating it in a clockwise direction.
4. Proceed by inserting the handle into the pump (H) on the right hand side, and start pumping by moving the lever up and down (otherwise left and right), until the leverage hardens as the maximum has been reached.
5. Unscrew the screw (G) that is found at the end of the piston (if the jack came supplied with one), rotating it in an anti-clockwise direction, until the maximum extension.
6. Verify that neither rust nor traces of oil loss show up. Should this happen, wipe them off with a clean cloth.
7. Open the exhaust valve, by inserting the handle into the correct location (F) and rotating it in an anti-clockwise direction. By placing a foot at the end of the pistons (M) exert the necessary pressure towards the bottom until the pistons re-enter.
8. Leave the exhaust valve (F) open.
9. Re-screw the screw (G) at the end of the pistons and place the jack back in the vehicle.
10. If traces or large amounts of oil loss are visible on the pistons, contact Northern at the address indicated at the beginning of this manual.

FOR SAFETY REASONS, NEITHER MODIFICATIONS NOR REPAIRS ARE TO BE DONE BY PERSONS UNTRAINED AND UNAUTHORIZED BY TORIN.

8. JACK DISPOSAL

In the event of disposal of the jack, it is necessary to remove the hydraulic oil from the jack in order to give it to waste processors of oil. To carry out this operation, remove the bung (L) from the tank.

The rest of the jack can be given to a yard for scrapping and recycling ferrous materials.



Besides the jack, it is necessary to use the manoeuvring rods (or rod) and the appropriate wheel locking devices.

If you have not used the jack for over 6 months, it is necessary to carry out a raise and lower operation without a load, to lubricate the hydraulic parts (see paragraph 7. JACK MAINTENANCE).

After having put on the hand break, it is necessary to lock one of the wheels (front and rear) which will remain in contact with the ground, by means of the appropriate wheel locking devices.

In order to correctly locate the jacking points of the vehicle and in order to replace the wheels correctly, it is necessary to read the manual for the uses and maintenance of the vehicle.

By means of the lever, verify that the exhaust valve is closed, by inserting the lever into the correct location (F), and rotating it in a clockwise direction. Proceed by connecting the jack to the jacking point of the vehicle, adjusting the height of the screw (G) at the end of the pistons (M) as close to the jacking point of the vehicle as possible.

At that point, insert the handle into the jack (H) and start pumping in order to slowly raise the vehicle, by gripping the handle at its end and keeping your body and limbs as far away from the vehicle and jack as possible.

When the wheel that is to be changed has been raised from the ground, stop pumping and lay the handle on the ground. Replace the wheel according to the instructions found in the manual for the use and maintenance of the vehicle.

NEVER GO UNDER A VEHICLE THAT HAS BEEN RAISED BY THE JACK!

After replacing the wheel, follow all the instructions given in the manual for the use and maintenance of the vehicle for the tightening of the wheel nuts. Before lowering the vehicle to the ground, remove anything that could have been left under the wheels. Proceed by opening the exhaust valve, inserting the lever into the correct location (F) and rotating slowly in an anti-clockwise direction.

DO NOT TIGHTEN THE NUTS OF THE WHEEL THAT HAS BEEN REPLACED UNTIL THE WHEEL IS TOUCHING THE GROUND.

Once the vehicle is on the ground, tighten the nuts of the wheel that has been replaced, by following the instructions given in the manual for the use and maintenance of the vehicle.

Pull out the jack by hooking it into the location of the exhaust valve (F) with the pumping lever. Should there be any difficulty, grip one of the pistons (M) with both hands, pushing it towards the bottom, until it frees itself from the underside of the vehicle. Then, by placing a foot at the end of the pistons, exert the necessary pressure towards the bottom, until the pistons re-enter completely.

Leave the exhaust valve (F) open.

Re-screw the screw (G) at the end of the pistons and place the jack and other equipment back inside the vehicle.

6. SAFETY MEASURES TO BE FOLLOWED

Whilst using the jack, it is not necessary to use personal protection.

NEVER GO UNDER A VEHICLE THAT HAS BEEN RAISED BY THE JACK!