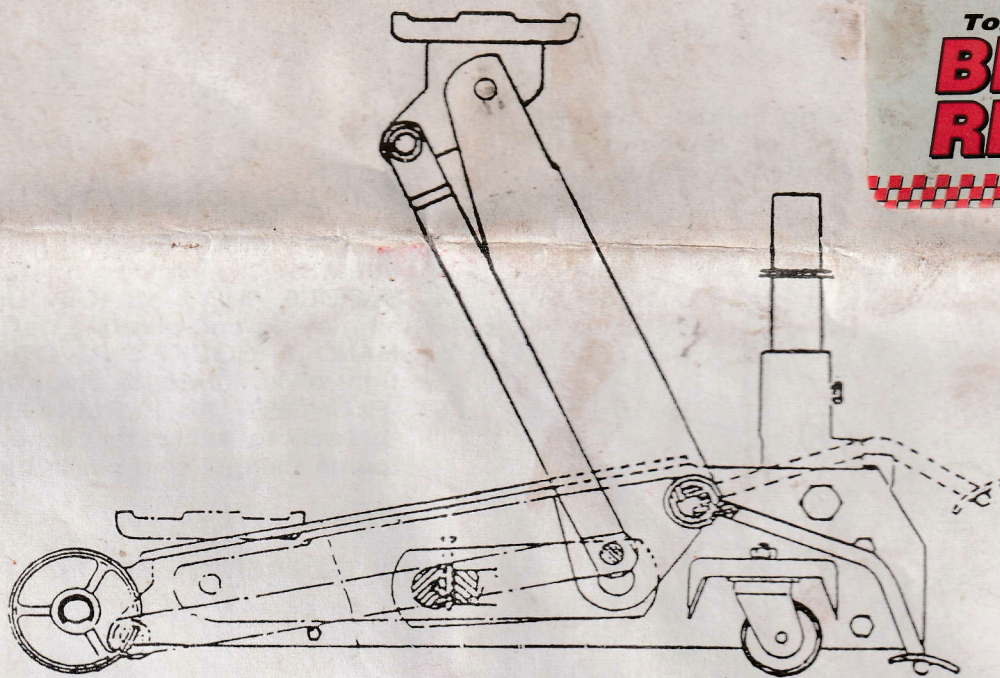

Operating Instructions and Parts List 2000KGS CAPACITY SERVICE JACK



Model T83502A

CAUTION

THIS JACK IS DESIGNED FOR LIFTING PURPOSES ONLY. AFTER JACKING, ALWAYS USE SAFETY STANDS TO SUPPORT LOAD BEFORE MAKING REPAIRS. FOR YOUR SAFETY — DO NOT OVERLOAD BEYOND RATED CAPACITY.

OPERATING INSTRUCTIONS

IMPORTANT: Sometimes during-shipment and handing, air gets into the hydraulic system, causing poor lifting performance. Purge any air from the system by fully opening Release Valve. (turn handle counterclockwise as shown). then, while holding the saddle down, operate pump handle rapidly several times.

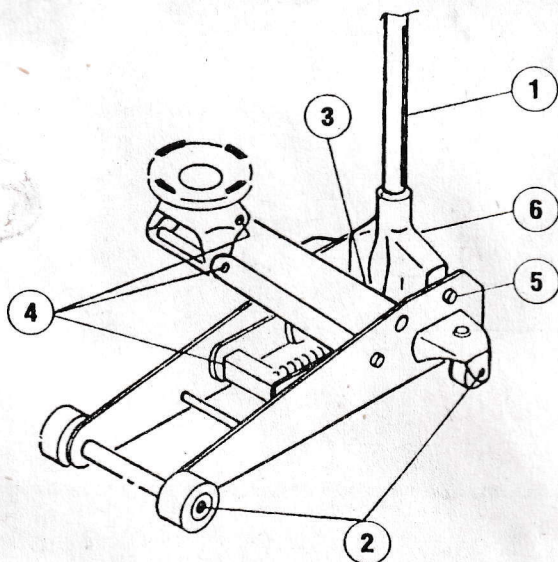
TO RAISE JACK

1. Turn the operating handle clockwise until release valve closes. Do not over tighten the valve.
2. Place jack directly under object to be lifted so that saddle takes up weight firmly and centrally. Check positioning under slight load to make sure jack will not slip when in use.
3. Raise jack to required height. After lifting use jack stand to hold load for any length of time.

TO LOWER JACK

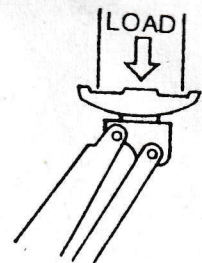
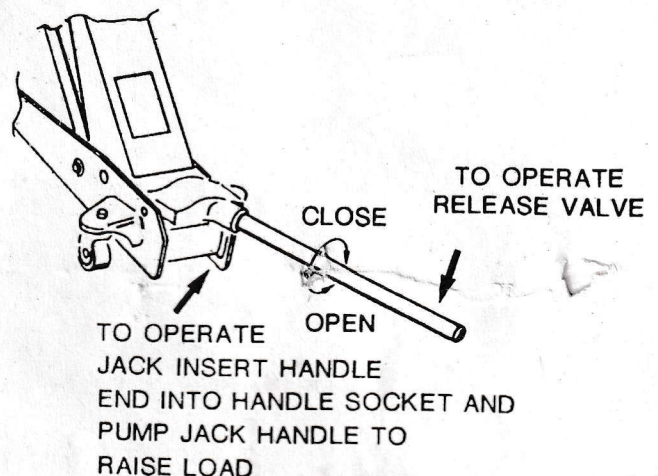
Slowly turn the operating handle counterclockwise. The speed of lowering is controlled by the amount valve is opened.

LUBRICATION POINTS



Before operating the jack lubricate the points indicated in the diagram. Use lubricants as indicated by the following numbers as marked on the diagram.

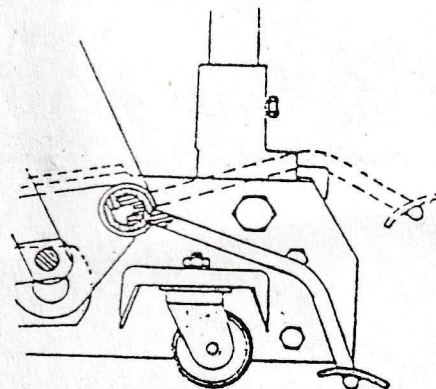
1. **HANDLE.** Use light oil on moving parts and lightly grease handle at point it fits into the handle socket.
2. **WHEELS.** Use light oil on axles and caster bearings.



CORRECT LOAD CONTACT

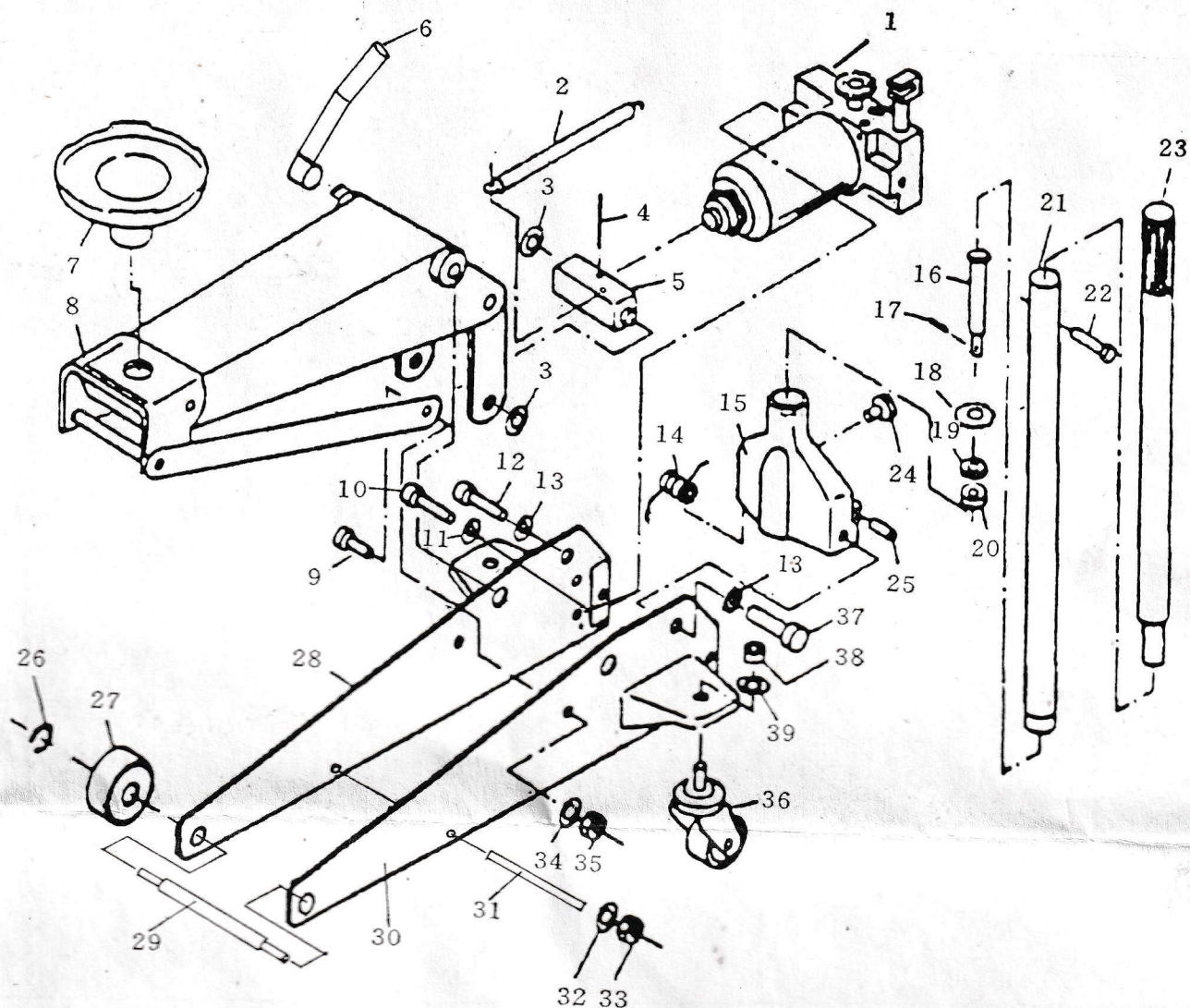
3. **LIFTING ARM.** Inject grease into grease fitting.
4. **SADDLE AND LINKAGE.** Use light oil on all moving and pivoting parts.
5. **HANDLE SOCKET PIVOT BOLTS.** Use light oil to lubricate pivot bolts.
6. **PLUNGER AND PLUNGER PIN.** Use grease to lubricate connection between pump plunger and pin in handle socket.

HOW TO OPERATE THE FOOT PLATE



1. Close the release valve clockwise.
2. Move the jack under the load.
3. Please push the foot plate with hand and/or foot until the saddle touches the load.
4. Continue to operate the jack with handle.

REPAIR PARTS LIST



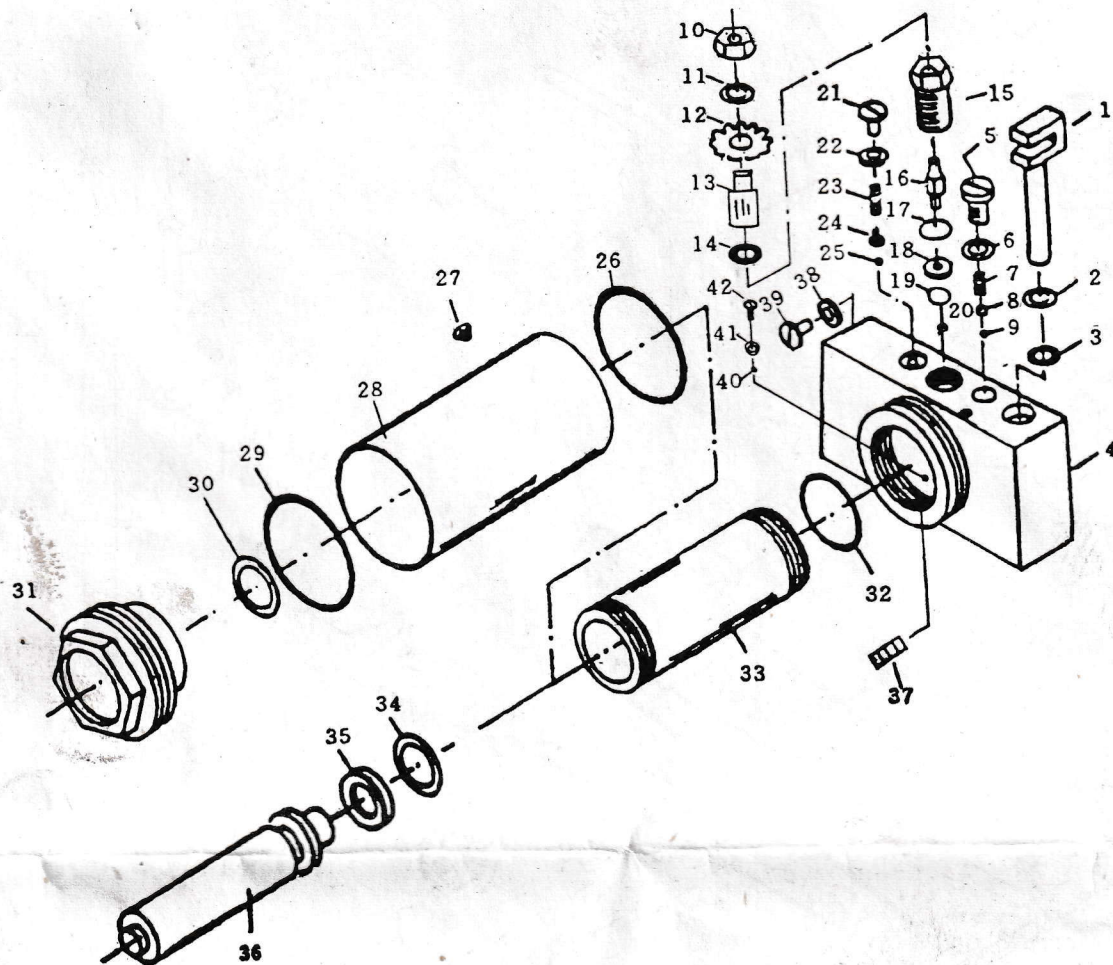
ITEM	CODE NAME	SPARES NAME	Q'TY.
1	T83502.3	CYLINDER ASSEMBLY	1
2	QLZ2A-20	RETURN SPRING	1
3	GB894.1-86	RETAINING RING 30	2
4	GB91-86	COTTER PIN 4×40	1
5	QLZ3.1-5	LINKING BLOCK	1
6	T83502.4	FOOT PLATE ASSEMBLY	1
7	T83502.6	SADDLE ASSEMBLY	1
8	T83502.1	LIFTING ARM ASSEMBLY	1
9	QLZ3-7	LINKING BOLT	2
10	GB70-85	SCREW M12×25	2
11	GB859-87	WASHER 12	2
12	QLZ2C-5	BOLT	1
13	GB859-87	WASHER 18	2
14	QLZ2C-4	TORSION SPRING	1
15	QLZ3.2-1a	HANDLE SOCKET	1
16	QLZ2C.3-2b	GEAR SHAFT	1
17	GB91-86	COTTER PIN 2×16	1
18	QLZ2C.3-3a	GEAR	1
19	GB93-87	WASHER 10	1

ITEM	CODE NAME	SPARES NAME	Q'TY.
20	GB6172-86	NUT M10	1
21	QLZ 2A.3a-2	LOWER HANDLE	1
22	GB5780-86	SCREW M6×35	1
23	QLZ2c.2-3	UPPER HANDLE	1
24	QLZ2c-1a	HANDLE SOCKET SCREW	1
25	QLZ2c-2	HANDLE SOCKET PIN	1
26	GB859-86	RETAINING RING 15	2
27	QLZ2J-6	FRONT WHEEL	2
28	T83502.2	RIGHT WALL PLATE ASSEMBLY	1
29	T83502-3	FRONT WHEEL SHAFT	1
30	T83502.5	LEFT WALL PLATE ASSEMBLY	1
31	T83502-2	LINKING SHAFT	1
32	GB859-87	WASHER 8	2
33	GB6170-86	NUT M8	2
34	GB859-87	WASHER 16	2
35	GB6172-86	NUT M16	2
36	QLZ 2c.5	REAR WHEEL ASSEMBLY	2
37	QLZ2c-3a	LEFT BOLT	1
38	GB6170-86	NUT M12	2
39	GB859-87	WASHER 12	2

WE RESERVE THE RIGHT TO ALTER DESIGNS AND SPECIFICATIONS AT ANY TIME WITHOUT PRIOR NOTICE

REPAIR PARTS LIST

POWER UNIT ASSEMBLY



ITEM	CODE NAME	SPARES NAME	Q'TY.
1	QLZ3. 4-8	PLUNGER	1
2	QLZ3. 4-6	BACK-UP RING	1
3	QLZ2c. 6-19	O-RING	1
4	T83502. 3-1	BASE PLATE	1
5	QLZ2A. 6-10a	PLUG SCREW	1
6	QLZ2C. 6-16a	WASHER	1
7	QLZ2A. 6-11	SPRING	1
8	GB308-84	BALL 9.0000	1
9	GB308-84	BALL 6.0000	1
10	GB6172-86	TANK NUT M10	1
11	GB93-87	WASHER 10	1
12	QLZ2c. 6-3a	WINDING GEAR WHEEL	1
13	QLZ2A. 6-6	RELEASE VALVE SHAFT	1
14	GB3452. 1-82	26501500	1
15	QLZ2c. 6-4	RELEASE VALVE NUT	1
16	QLZ 2c. 6-5	RELEASE VALVE WICK	1
17	QLZ2A. 6-20	STEEL WASHER	1
18	QLZ2A. 6-7	SQUARE WASHER	1
19	QLZ2A. 6-2	ALUMINUM WASHER	1
20	GB308-84	BALL 6.0000	1
21	QLZ3. 4-9a	PLUG SCREW	1

ITEM	CODE NAME	SPARES NAME	Q'TY
22	GB3452. 1-82	O-RING	1
23	QLZ3. 4-10	SPRING	1
24	QLZ3. 4-11a	SPRING BASE	1
25	GB308-84	BALL 3.0000	1
26	QLZ2A. 6-18	U-WASHER	1
27	QYL8-29	OIL PLUG	1
28	QLZ2c. 6-9	RESERVOIR	1
29	GB3452. 1-82	35506500	1
30	GB3452. 1-82	O-RING	1
31	QLZ3. 4-3	TOP CUP	1
32	QLZ3. 4-15	BASE PLATE WASHER	1
33	QLZ3. 4-2	CYLINDER	1
34	GB3452. 1-82	35503450	1
35	QYL8-18	BOWL WASHER	1
36	QLZ3. 4-4	PISTON ROD	1
37	QLZ3. 4-12	FILTER OIL TUBE	2
38	QLZ2c. 6-17a	WASHER	1
39	GB70-85	SCREW	1
40	GB308-84	BALL 6.0000	1
41	T82008. 4-21	PRESSING PLATE	1
42	GB67-85	SCREW M5X6	1