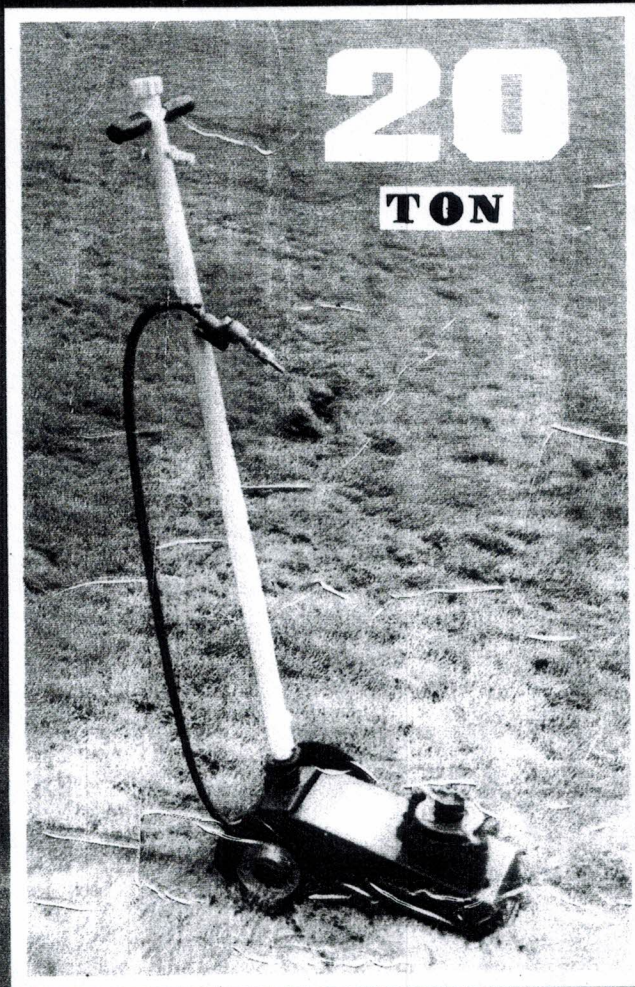


PNEUMO- HYDRAULIC JACK

Operating Instructions
and Parts list

QYQ 20



CIA
2520

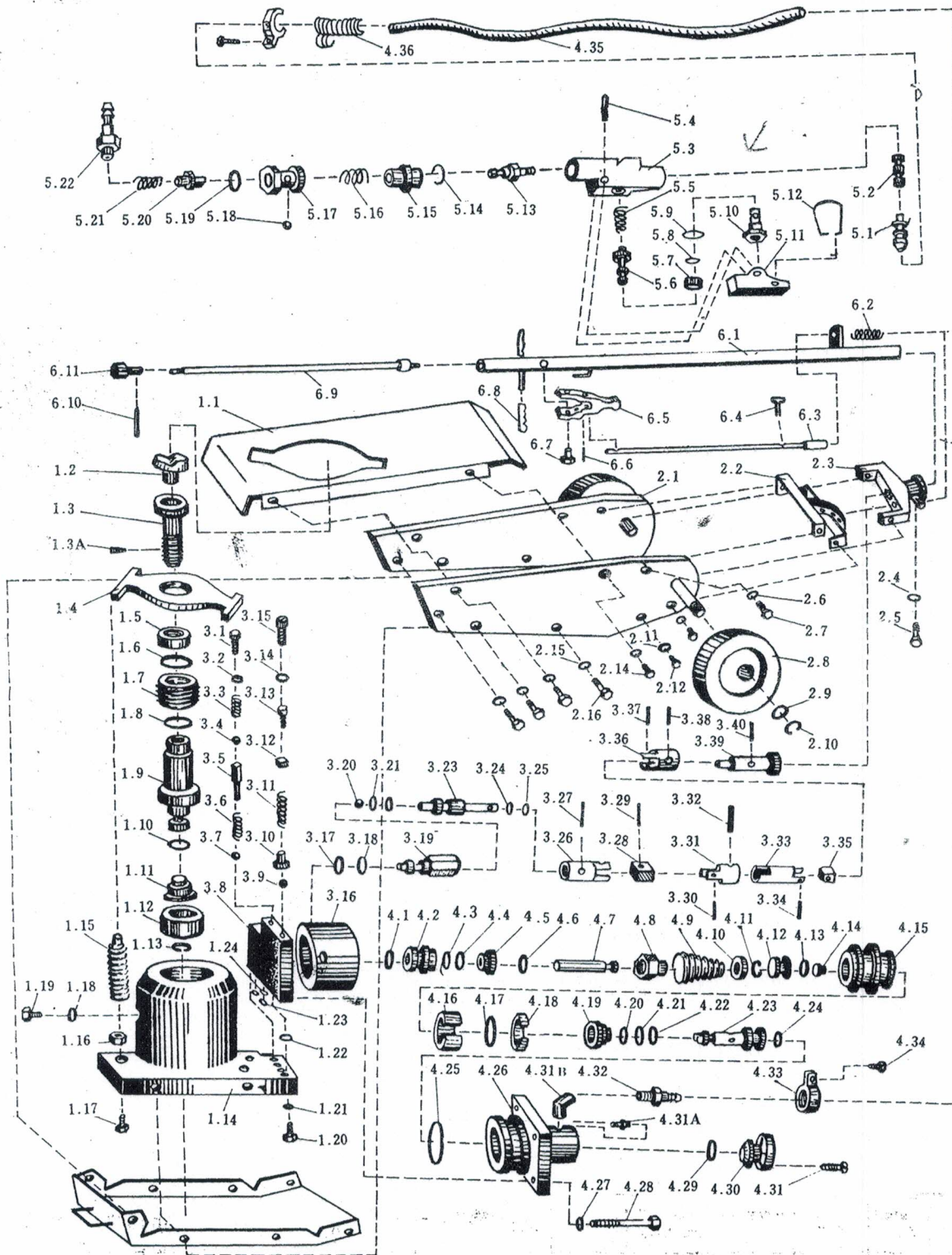


Chengdu Aircraft
Industry Corporation
of MAS China

Address: Huang Tian Ba Chengdu
Telephone: 669461 - 4501
Cable: 6752 Sales Dept

PART LIST

ser: No:	part name	ser: No:	part name	ser No:	part name
1.1	cover	3.11	spring	4.22	rubber ring
1.2	push rod	3.12	stop block	4.23	throttle rod
1.3	screw rod	3.13	screw	4.24	rubber ring
1.3A	elastic pin	3.14	rubber ring	4.25	rubber ring
1.4	top cover	3.15	screw	4.26	air pump body
1.5	screw bush	3.16	pump body	4.27	washer
1.6	Y-shape seal ring	3.17	washer	4.28	bolt
1.7	end cover	3.18	rubber ring	4.29	rubber ring
1.8	rubber ring	3.19	switch case	4.30	end cover
1.9	piston rod	3.20	steel ball	4.31	screw
1.10	stop ring	3.21	rubber ring	4.31A	screw tube
1.11	U-shape seal ring	3.23	switch core	4.31B	elbow joint
1.12	piston head	3.24	washer	4.32	union
1.13	elastic stop ring	3.25	stop ring	4.33	spiral clamp ring
1.14	cylinder base	3.26	fork axle with hole	4.34	worm
1.15	spring	3.27	steel wire	4.35	rubber hose
1.16	nut	3.28	connecting block	4.36	spring
1.17	cross-groove screw	3.29	steel wire	5.1	union
1.18	rubber ring	3.30	steel wire	5.2	filter nozzle
1.19	screw	3.31	fork axle	5.3	case
1.20	screw	3.32	pin	5.4	pin
1.21	washer	3.33	Joint	5.5	spring
1.22	rubber ring	3.34	steel wire	5.6	piston rod
1.23	rubber ring	3.35	connecting block	5.7	seal ring
1.24	rubber ring	3.36	fork axle with hole	5.8	rubber ring
2.1	side plate	3.37	steel wire	5.9	rubber ring
2.2	supporter	3.38	elastic pin	5.10	throttle
2.3	supporter arm	3.39	connecting axle	5.11	handle cover
2.4	washer	3.40	elastic pin	5.12	locking spring
2.5	fastening screw	4.1	washer	5.13	union
2.6	washer	4.2	union	5.14	spring clamp ring
2.7	bolt	4.3	rubber ring	5.15	bush
2.8	wheel	4.4	seal ring	5.16	spring
2.9	washer	4.5	plug bush	5.17	screw bush
2.10	split stop ring	4.6	rubber ring	5.18	steel ball
2.11	washer	4.7	plug	5.19	seal ring
2.12	screw	4.8	cap	5.20	valve core
2.14	screw	4.9	copped spring	5.21	spring
2.15	washer	4.10	spring holder	5.22	union
2.16	bolt	4.11	clamp ring	6.1	outside tube
3.1	screw	4.12	steel bush	6.2	spring
3.2	washer	4.13	rubber ring	6.3	locator
3.3	spring	4.14	seal plug	6.4	split pin
3.4	steel ball	4.15	piston	6.5	locating handle
3.5	valve core	4.16	fluoroplastics plate	6.6	elastic pin
3.6	spring	4.17	rubber ring	6.7	hexagon-headed screw
3.7	steel ball	4.18	seal ring	6.8	handle
3.8	cylinder base	4.19	seal throttle	6.9	control rod
3.9	steel ball	4.20	washer	6.10	elastic pin
3.10	valve seat	4.21	rubber ring	6.11	operating handle



Standard Attention
 Standard Attention
 Standard Attention

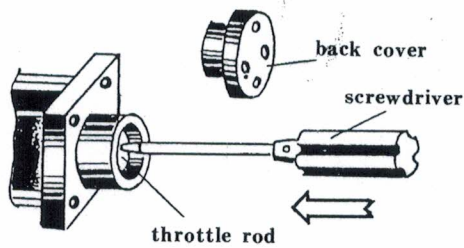


Fig. 1

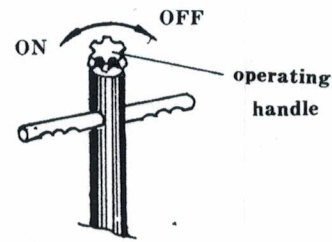


Fig. 2

During the transportation, sometimes the air can enter into the hydraulic system causing slow operation of the jack. Cut in the pneumatic source, make the air-pump to work, loosen the screw (see

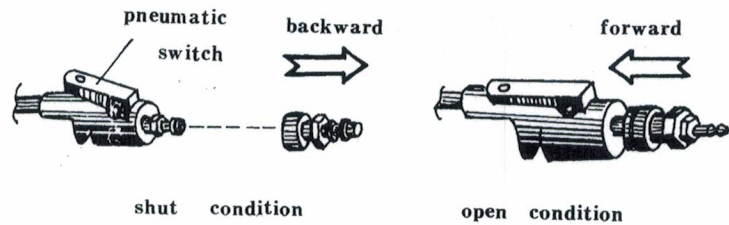


Fig. 3 Connecting method of quick-change joint

3.15 in the part list) to eliminate the air, then tighten the screw.

Due to the pump working at friction condition, sometimes the throttle rod can be stuck, thus making the air-pump work abnormally. At this time, take off the back cover (see Fig.1), inject a few drops of the lubricant, push the throttle rod to move back and forth until it can be moved flexibly, then install the back cover.

Extension of the jack:

1. Tighten the operating handle, clockwise (see Fig.2), but don't over-tight it.
2. Connect the quick-change joint (see Fig.3)
3. Press down the pneumatic switch (see Fig.3), make the jack to extend till the desired position.

Lower-down of the jack:

Turn the discharge cock slowly counter-clockwise (see Fig.2), the lower-down speed is controlled by the discharge cock.

Note: 1. The hydraulic fluid used for the cylinder must be of high class in the same type.

2. When the jack is operated. the ground surface must be level and hard. Don't make the rubber wheel hear the load.
3. The pneumatic pressure must be kept in the rated range.
4. The load lifted by the jack should not exceed the value specified on the nameplate.

Technical specification

Type	rated load	lift height	height (min)	adjusting height	pneumatic pressure	wheel diameter	distance between two wheel	wheel width	net weight	package dimension		
										length	width	height
	TON (kg)		mm (inch)		MPa		mm (inch)		kg	mm (inch)		
QYQ20	20 (20000)	115 (4 1/2")	228 (9")	105 (4 1/7")	0.7-1	200 (8")	322 (12 2/3")	43 (1 5/7")	45	555 (21 5/6")	330 (13")	250 (9 5/6")