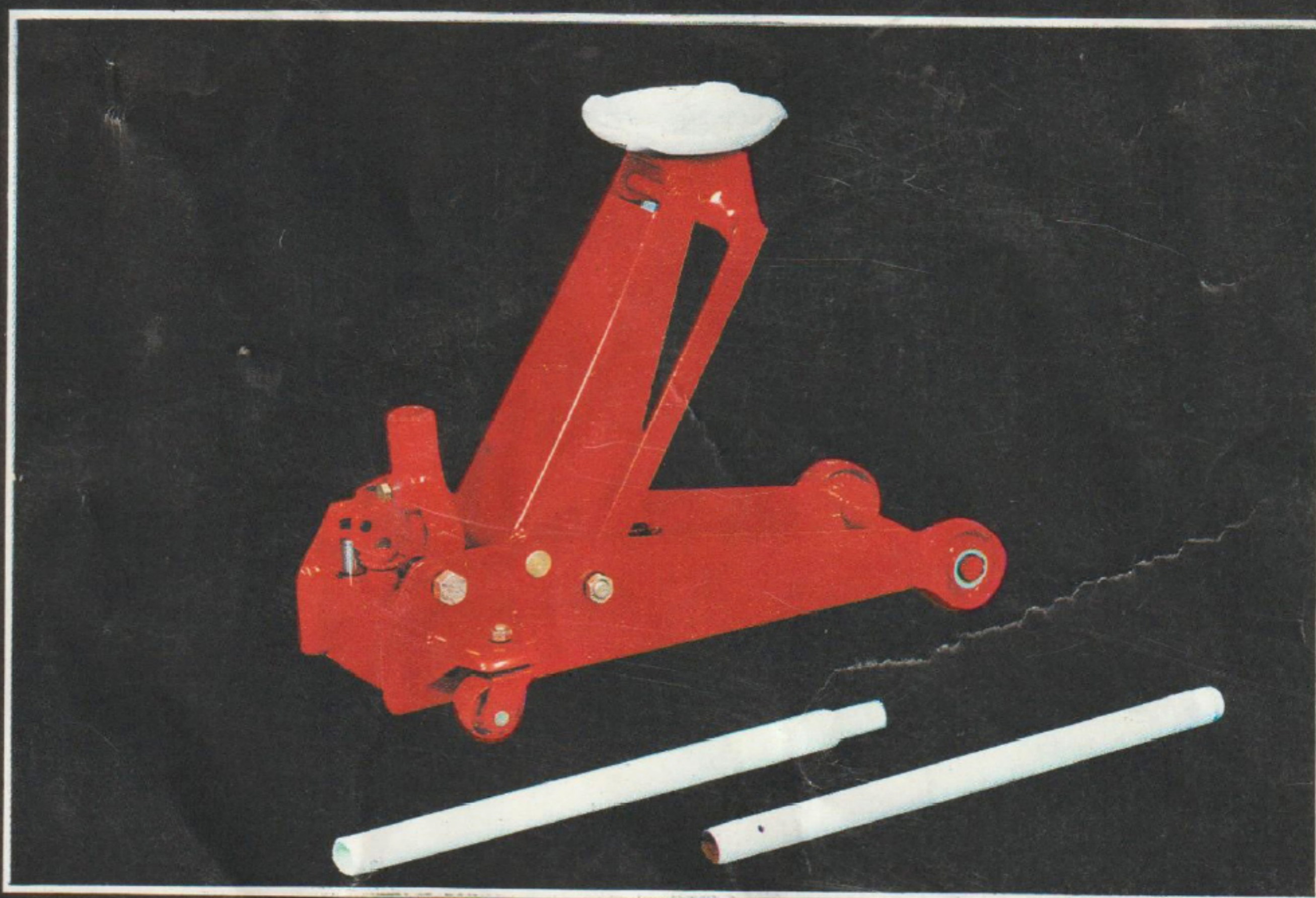


2 1/4 TON CAPACITY

GARAGE JACK



MODEL QKZ2

SPECIFICATIONS

Capacity short ton (lbs)	Min Saddle Height mm (inch)	Max Saddle Height mm (inch)	Power Lift mm (inch)	Overall Width at casters mm (inch)	Overall Length mm (inch)	Handle Length mm (inch)	Frame Height mm (inch)	Net Weight Kgs (lbs)	Usage
2 1/4 (4400)	130 (5 1/8")	490 (19 5/16")	360 (14 3/16")	350 (13 3/4")	725 (28 9/16")	1055 (41 9/16")	160 (6 5/16")	40 (88)	Passenger Cars

CAUTION

THIS JACK IS DESIGNED FOR LIFTING PURPOSES ONLY. AFTER JACKING, ALWAYS USE SAFETY STANDS TO SUPPORT LOAD BEFORE MAKING REPAIRS FOR YOUR SAFETY DO NOT OVERLOAD BEYOND RATED CAPACITY

OPERATING INSTRUCTIONS

IMPORTANT: Sometimes during shipment and handling air gets into the hydraulic system, causing poor lifting performance. Purge any air from the system by fully opening Release Valve (turn handle counterclockwise as shown), then, while holding the saddle down, operate pump handle rapidly several times.

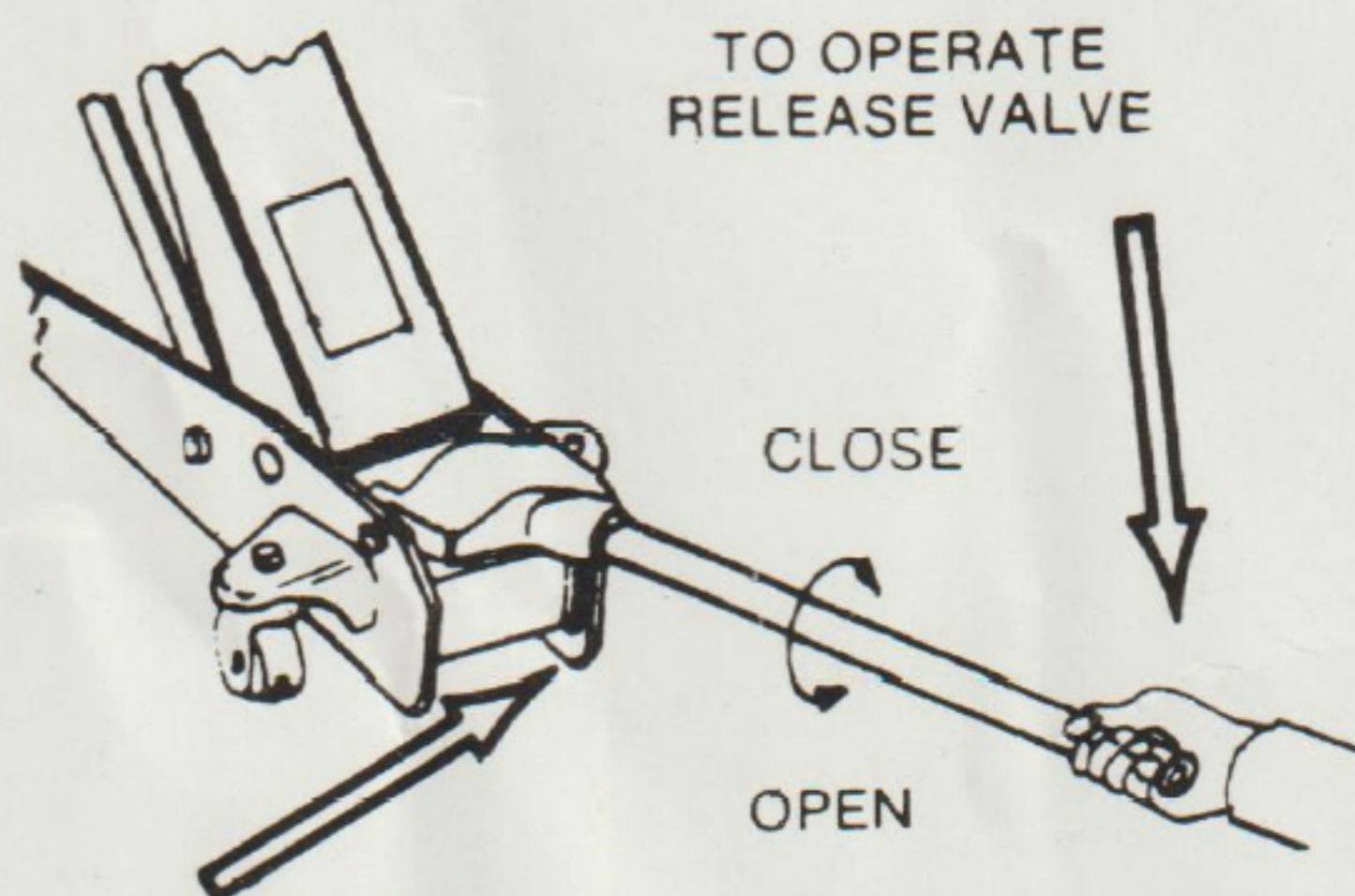
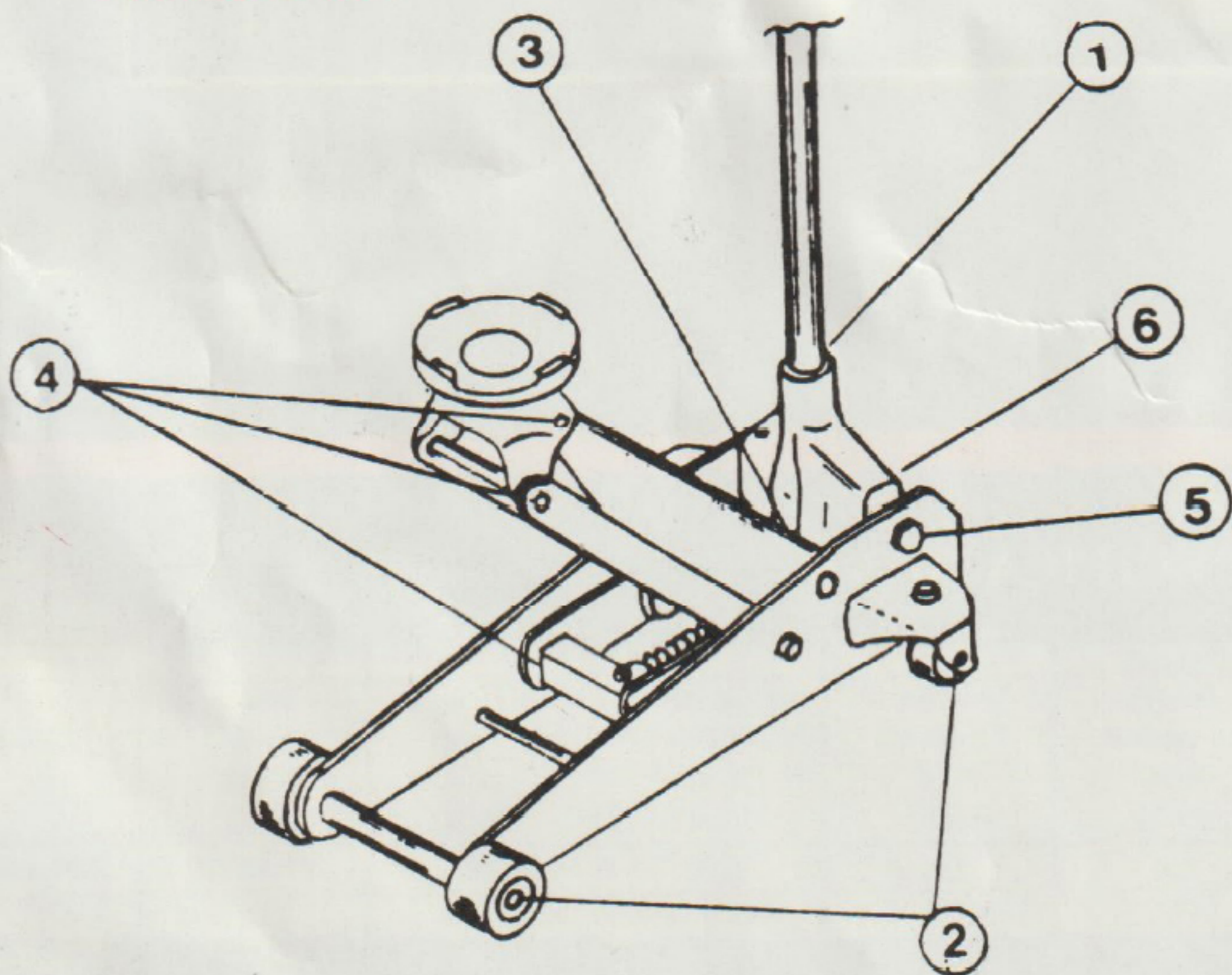
TO RAISE LOAD

1. Close release valve by turning handle **CLOCKWISE** to a **SNUG-TIGHT** position. (**DO NOT OVER-TIGHTEN**)
2. Position jack under load so that saddle will control load **FIRMLY** and is **CENTERED** so it cannot slip.
3. **Raise** jack to desired height. Transfer to **JACK STANDS** if load is to be held up for an extended period.

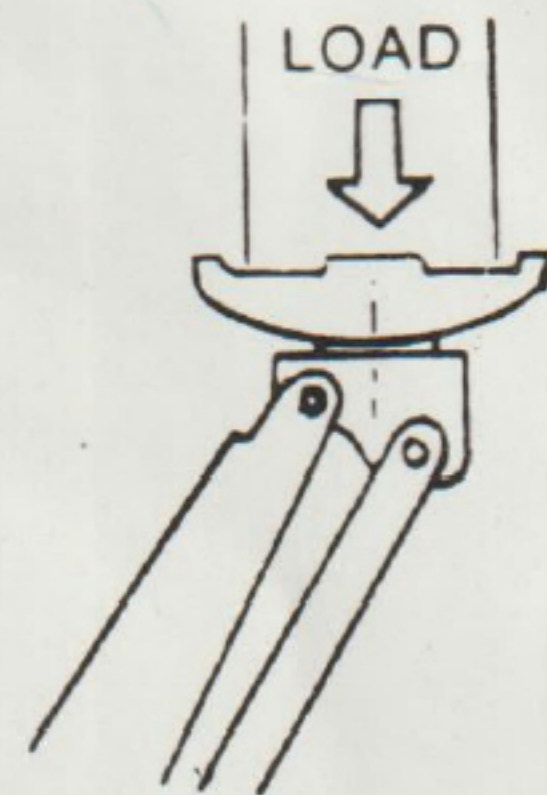
TO LOWER LOAD

Open release valve by turning handle **COUNTERCLOCKWISE** very slowly. The speed of lowering the load is controlled by how much you turn the handle.

LUBRICATION



TO OPERATE JACK INSERT HANDLE END INTO HANDLE SOCKET AND PUMP JACK HANDLE TO RAISE LOAD



Lubricate the following points, before first use, and at least one or two times per month. Figures on Jack illustration match the figures below.

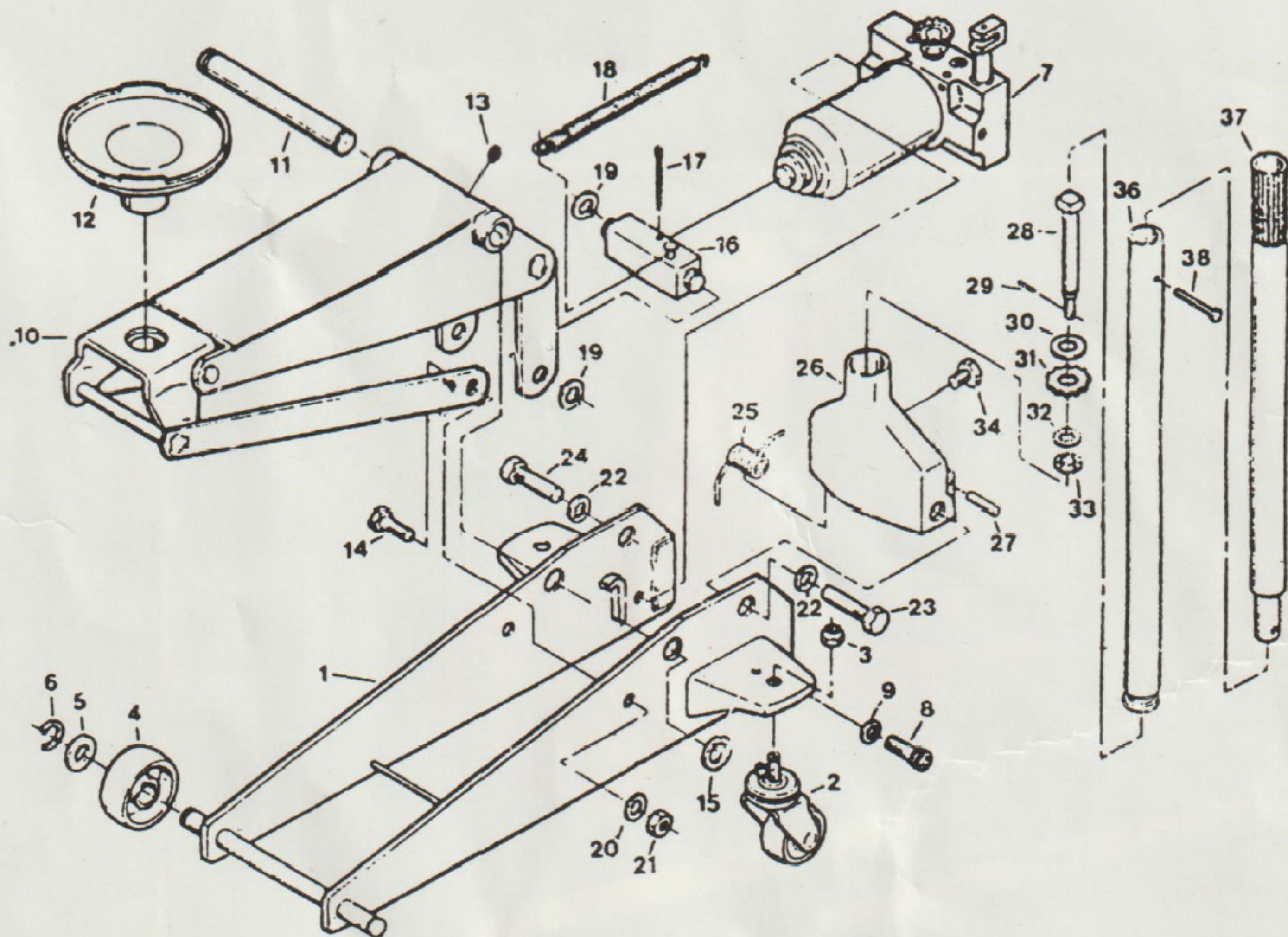
1. Handle - Lubricate moving parts with light oil and grease handle where it enters the handle socket.
2. Wheels - Lubricate all wheel axles and caster bearings with light oil.
3. Lift Arm - Add grease to lift arm fitting.
4. Saddle and Linkage - Lubricate with light oil all moving and pivoting parts of saddle and lift arm linkages.
5. Handle Socket Pivot Bolts - Lubricate (2) pivot bolts with light oil.
6. Plunger and Plunger Pin - Grease thoroughly connection between pump plunger and pin in handle socket.

MAINTENANCE PROCEDURES

IMPORTANT: When adding or replacing oil, always use a good grade hydraulic jack oil. Avoid mixing types of oil. **DO NOT** use Brake Fluid, Alcohol, Glycerine, detergent motor oil or dirty oil. Improper fluid can cause serious internal damage to jack. When adding oil, be **VERY CAREFUL** not to permit dirt or any foreign matter to get into the system.

Check Ram and Plunger every 3 months for any signs of rust or corrosion. Clean as needed and wipe with an oily cloth. When not using the jack, always leave the Saddle all the way down.

REPAIR PARTS LIST

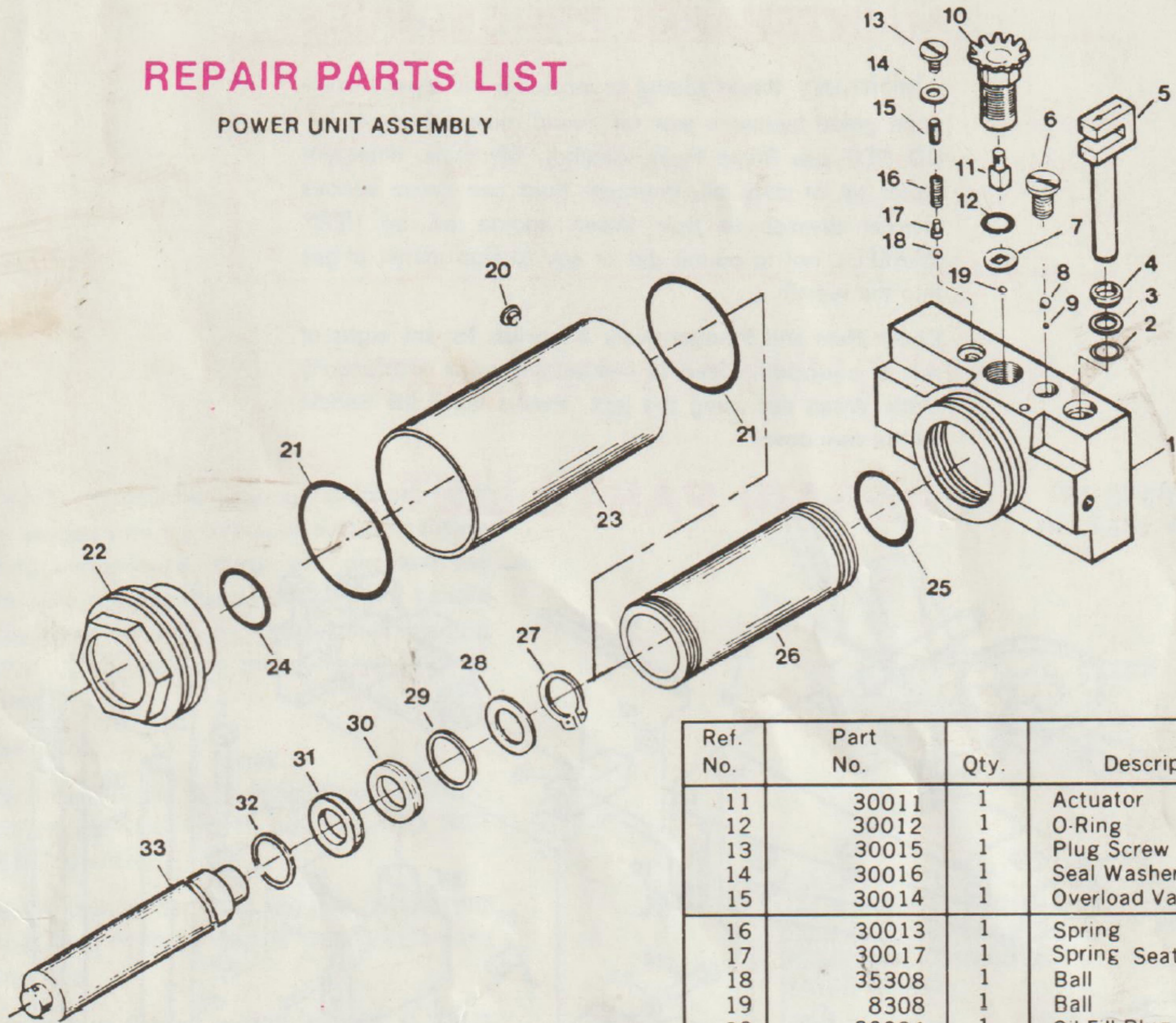


Ref. No.	Part No	Qty	Description
1	10950	1	Side Plate Weldment
2	50950	2	Caster Assembly
3	1252	2	Locknut
4	00001	2	Wheel
5	24848	2	Washer (Axle)
6	24894	2	Retaining Ring
7	30950	1	Power Unit Assembly
8	123070	2	Socket Head Cap Screw
9	12859	2	Split Lockwasher
10	20950	1	Lift Arm Assembly
11	00002	1	Shaft, Arm
12	40950	1	Saddle
13	61152	1	Grease Fitting
14	00006	2	Bolt, Link
15	25894	2	Retaining Ring
16	22950	1	Block, Link (Ram)
17	44591	1	Cotter Pin
18	00005	1	Return Spring
19	25894	2	Retaining Ring
20	16859	2	Lockwasher

Ref. No.	Part No.	Qty	Description
21	1654	2	Hex Nut
22	18859	2	Lockwasher
23	00003	1	Bolt
24	00003	1	Bolt
25	00004	1	Torsion Spring
26	60003	1	Handle Socket
27	00010	1	Plunger Pin
28	60002	1	Gear Shaft
29	21291	1	Cotter Pin
30	16848	1	Washer
31	60001	1	Gear, Handle Socket
32	10859	1	Lockwasher
33	1041	1	Hex Nut
34	00009	1	Handle Bolt
35			
36	72950	1	Handle, Lower
37	71950	1	Handle, Upper
38	63530	1	Hex Head Screw

REPAIR PARTS LIST

POWER UNIT ASSEMBLY



Ref. No.	Part No.	Qty.	Description
1	30001	1	Valve Block
2	30018	1	O-Ring
3	30019	1	Back-Up Ring
4	30021	1	Wiper
5	30020	1	Plunger
6	30022	1	Plug Screw
7	30010	1	Guide Plate
8	10308	1	Ball
9	1/4308	1	Ball
10	32950	1	Release Valve Assembly

Ref. No.	Part No.	Qty.	Description
11	30011	1	Actuator
12	30012	1	O-Ring
13	30015	1	Plug Screw
14	30016	1	Seal Washer
15	30014	1	Overload Valve Screw
16	30013	1	Spring
17	30017	1	Spring Seat
18	35308	1	Ball
19	8308	1	Ball
20	30024	1	Oil Fill Plug
21	30003	2	O-Ring
22	30006	1	Tank Nut
23	30005	1	Reservoir
24	30008	1	O-Ring
25	30002	1	O-Ring Retainer
26	30004	1	Cylinder
27	28894	1	Retaining Ring
28	31005	1	Seal Retainer Washer
29	31004	1	O-Ring
30	31003	1	O-Ring Retainer
31	31002	1	Ram Seal Washer
32	35895	1	Retaining Ring
33	31001	1	Ram

TROUBLE SHOOTING

TROUBLE	POSSIBLE CAUSE	REMEDY
Will not lift load at all	1) Release Valve not properly closed 2) No oil in system 3) Delivery Valve and/or By-Pass Valve not functioning 4) Packing worn out or defective	1) Tighten securely. 2) Fill to prescribed level. 3) Flush by pulling lifting arm up and down several times while release valve is open. If necessary, the release valve may be removed for cleaning the valve and valve seat 4) Replace Packings.
Will lift load only part way	5) Oil level low	5) Fill oil to prescribed level.
Will lift load, but will not hold	6) Either of the following Valves not functioning (a) Suction Valve, (b) Delivery Valve. (c) Release Valve, (d) By-Pass Valve. 7) Packing worn-out or defective.	6) Inspect Valves-Clean and adjust seat surface 7) Replace Packings
Jack will not lower	8) Release Valve not opening	8) Clean and adjust Release Valve
Poor lifting	9) Pump packing defective or Valves malfunctioning 10) Dirty Oil 11) Air in Hydraulic System	9) Replace packings and/or clean Valves 10) Replace oil 11) Purge Air from system