

## TROUBLE SHOOTING

### SYSTEM AIR PURGE:

1. Turn release valve counterclockwise one full turn to open.
2. Pump handle eight full strokes.
3. Turn release valve clockwise to close valve.

## TROUBLE SHOOTING

PROBLEM	POSSIBLE CAUSE	ACTION
Jack will not lift to full height	Low oil level	Check oil level
Jack will not hold load	Release valve not closing Hydraulic jack oil contaminated Pump valves not sealing Cylinder ram binding	Call customer service
Lift arm will not lower	Cylinder ram binding Parts worn Internal damage Broken return spring or unhooked Lift arm linkage bent or binding	Call customer service
Jack feels spongy when lifting	See Air Purge section	See Air Purge procedure

## FACTORY SERVICE

Any hydraulic jack found to be damaged in any way, is found to be worn or operates abnormally, believed to have subjected to an abnormal load, "SHALL BE REMOVED FROM SERVICE UNTIL REPAIRED". Owners and/or operators should be aware that repair of the equipment requires specialized knowledge and facilities. Only factory authorized parts, labels and decals shall be used on this equipment. Call customer service department.

Annual inspection of the jack is recommended and should be made by the manufacturer's or supplier's authorized repair facility to ensure that your jack is in optimum conditions and that the jack has correct decals and safety labels specified by the manufacturer.

## WARNING!

- READ, STUDY, AND UNDERSTAND ALL WARNINGS AND OPERATING INSTRUCTIONS PRIOR TO USE
- DO NOT OVERLOAD THIS JACK BEYOND THE RATED CAPACITY.
- THIS JACK IS DESIGNED FOR USE ONLY ON HARD LEVEL SURFACES CAPABLE OF SUSTAINING THE LOAD. USE ON OTHER THAN HARD LEVEL SURFACES CAN RESULT IN JACK INSTABILITY AND POSSIBLE LOSS OF LOAD.
- THIS IS A LIFTING DEVICE ONLY. IMMEDIATELY AFTER LIFTING, SUPPORT THE VEHICLE WITH JACK STANDS
- DO NOT GET UNDER OR ALLOW ANYONE UNDER THE VEHICLE UNTIL IT HAS BEEN SUPPORTED BY JACK STANDS.
- DO NOT MOVE OR DOLLY THE VEHICLE WHILE ON THE JACK.
- LIFT ONLY ON AREAS OF THE VEHICLE AS SPECIFIED BY THE VEHICLE MANUFACTURER.
- CENTER LOAD ON SADDLE PRIOR TO LIFTING.
- NO ALTERATIONS TO THE JACK SHALL BE MADE.
- FAILURE TO HEED THESE WARNINGS MAY RESULT IN PERSONAL INJURY AND/OR PROPERTY DAMAGE.

Because of the potential hazards associated with the misuses of equipment of this type, no alterations shall be made to the product without written authorization of the manufacturer or supplier.

## Assembling your jack:

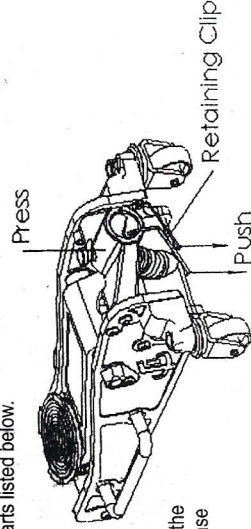
Please check that you have all of the parts listed below.

Components:

- 1ea. Aluminum jack chassis
- 1ea. Pumping handle in two parts
- 1ea. Breathing screw

First, remove the retaining clip:

Press the yoke(17) down and then pull the retaining clip out from the hole in the base (as pictured).



## HANDLE ASSEMBLY

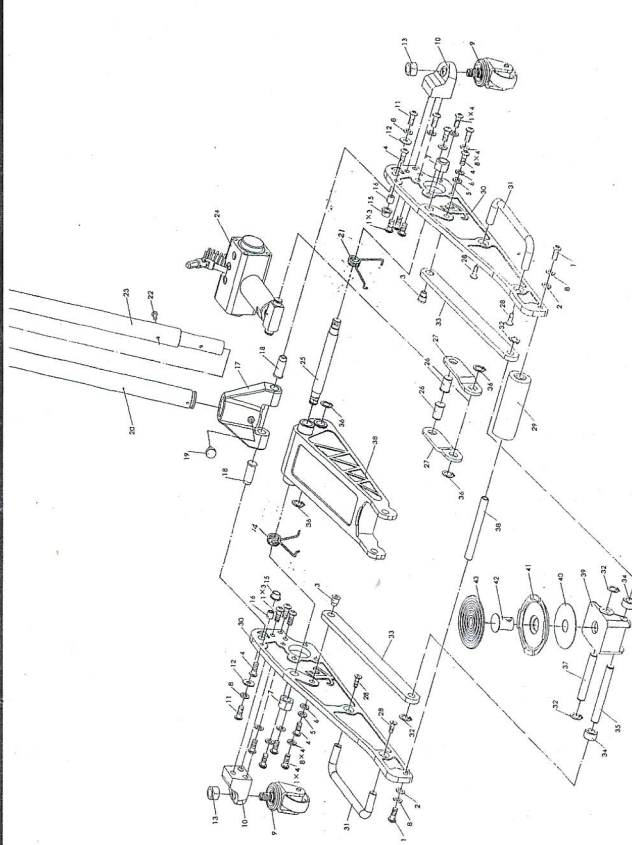
- (1) Assemble the handle by inserting the upper handle(23) into the lower handle(20). The detent ball will lock the two pieces together.
- (2) Remove the Yoke Base Screw (19) from the yoke(17) put pump handle into yoke socket hole engaging the universal joint of the release valve. Ensure the handle is seated completely into the socket then tighten the Yoke Base Screw(19).

## Installing the Breathing Screw (14)

(refer to Pump Assembly Diagram #2)

Remove the Seal Bolt (13) and replace with Breathing Screw (14). Open the release valve by turning the pumping handle counter clockwise. Cycle the handle up and down 3-4 times and then close the valve by turning the handle clockwise. This action will clear any air that may be in the pump assembly from shipping. Your jack is now ready for operation.

## PART LIST (Diagram #1)



ITEM NO.	DESCRIPTION	QTY	ITEM	DESCRIPTION	QTY
1	SCREW M10x25	16	23	HANDLE UPPER	1
2	WASHER 10	2	24	POWER UNIT ASSY	1
3	LINK ROD AXIS	2	25	LIFT ARMS AXIS	1
4	SCREW M8x25	4	26	PULL ROD AXIS	2
5	INNER WASHER 8	2	27	PULL ROD	2
6	WASHER 8	2	28	INNER HEX SCREW	4
7	SCREW BUSHING	2	29	FRONT WHEEL	2
8	INNER TIGHTEN WASHER 10	10	30	FRAME	2
9	REAR WHEEL SET	2	31	HANDLE BAR	4
10	REAR WHEEL SADDLE	2	32	"C"-RING S16	2
11	SCREW M10x25	2	33	LINK ROD	2
12	LINKAGE WASHER	2	34	LINK ROD WASHER	2
13	NUT M12	2	35	SADDLE BASE AXIS (LONG)	1
14	RETURN SPRING (RIGHT)	1	36	"C"-RING S20	1
15	CASE	1	37	SADDLE BASE AXIS (SHORT)	1
16	SCREW BUSHING	2	38	LIFT ARM	1
17	YOKE	1	39	SADDLE BASE	1
18	YOKE BASE AXIS	2	40	NYLON WASHER	1
19	YOKE BASE SCREW	1	41	SADDLE	1
20	HANDLE LOWER	1	42	HOLDER AXIS	1
21	RETURN SPRING (LEFT)	1	43	RUBBER SADDLE PAD	1
22	HEX BOLT M6x18				

**Rated Capacity**  
(Safe Working Load)

**3,000 Lbs MAX**

**Lowered Height**

**3.5"**

**Maximum Height**

**17.25"**

or warning labels and while in use, or Spanish, the product warnings and labels shall be made to this product. In as cracked welds, damage, bent, worn, to an abnormal load or shock. representative prior to use.

reference instructions contained on the product in product instructions for future reference.

the jack beneath the prescribed lift point.

nd down. acturer. Do not get under the vehicle if time.

owering.

ll shall be made to this product.

to an abnormal load or shock. representative prior to use.

/ loads. Any restriction due to dirt, rust, etc., components. The following steps are designed bearings and axles.

ed by a customer service representative

with an oil cloth. When not in use,

use from excessive corrosion.

Always purchase and use products labeled

to apply force to the saddle for lowering. bottom of fill hole. If not, top off.

## SPECIFICATIONS

**Rated Capacity  
(Safe Working Load)**

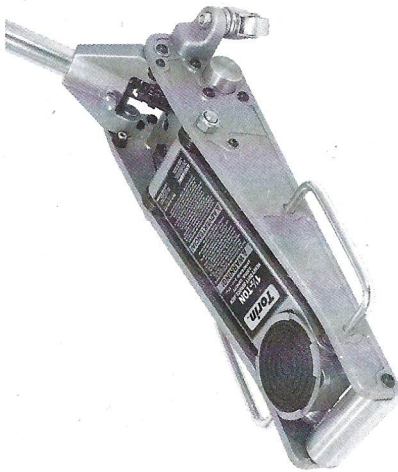
**3,000 Lbs MAX**

**Lowered Height**

**3.5"**

**Maximum Height**

**17.25"**



## OPERATIONS

The owner and/or operator is responsible for providing maintenance, maintaining all decals or warning labels, and while in use, maintaining the unit in good work order. If the owner and/or operator is not fluent in English, the product warnings and instructions shall be read and discussed with the operator in the operator's native language by the purchaser/owner or his designee. Make sure that the operator comprehends its contents. Safety information shall be emphasized and understood prior to usage. The jack shall be inspected per the instruction manual prior to use.

It is the owner and/or operators responsibility to study all **WARNINGS**, operating, and maintenance instructions contained on the product label and instruction manual prior to operation of this unit. The owner/operators shall retain product instructions for future reference.

### Raising Vehicle:

1. Make sure the jack and vehicle are on a hard level surface.
2. Always set the vehicle parking brake and block the wheels.
3. Consult the vehicle owners manual to ascertain the location of jack points and position the jack beneath the prescribed lift point.
4. Turn the release valve clockwise to the closed position. **DO NOT OVER TIGHTEN!**
5. To raise the vehicle to desired height, place the handle into the socket and pump up and down.
6. Place jack stands beneath the vehicle at locations recommended by the vehicle manufacturer. Do not get under the vehicle without jack stands. Jacks are not designed to maintain heavy loads for long periods of time.
7. Turn release valve **SLOWLY** counterclockwise to lower load onto jack stands.

### Lowering Vehicle:

1. Turn the release valve clockwise to the closed position.
2. Pump the handle to lift vehicle off of jack stands.
3. Remove the jack stands. Do not get under or let anyone else under the vehicle while lowering.
4. Turn the release valve **SLOWLY** counterclockwise to lower the vehicle onto the ground.

## INSPECTION

The product shall be maintained in accordance with the product instructions. No alterations shall be made to this product. Before use, a visual inspection of the jack should be made for abnormal conditions such as cracked welds, damage, bent, worn, loose or missing parts, or hydraulic leaks.

1. Inspectors shall be performed in accordance with this manual
2. The product shall be inspected immediately if the jack is believed to have been subjected to an abnormal load or shock.
3. It is recommended that this inspection be made by an authorized customer service representative prior to use.

## MAINTENANCE

Monthly maintenance is recommended. Lubrication is critical to jacks as they support heavy loads. Any restriction due to dirt, rust, etc., can cause either slow movement or cause extremely rapid jerks, damaging the internal components. The following steps are designed to keep the jack well lubricated:

1. Lubricate the ram, linkages, saddle and pump mechanism with light oil. Grease wheel bearings and axles.
2. Visually inspect for cracked welds, bent, loose, missing parts or hydraulic oil leaks.
3. If jack is subjected to abnormal load or shock, remove from service and have it examined by a customer service representative prior to use.
4. Clean all surfaces and maintain all labels and warnings.
5. Check and maintain the ram oil level.
6. Check ram every 3 months for any sign of rust or corrosion. Clean as needed and wipe with an oil cloth. When not in use, always leave the saddle and ram all the way down.

**Always store your jack in the fully lowered position. This will help protect critical areas from excessive corrosion.**  
Do not use brake or transmission fluids or regular motor oil as they can damage the seals. Always purchase and use products labeled Hydraulic Jack Oil.

## CHECK OIL LEVEL

1. Turn release valve counterclockwise to allow ram to fully retract. It may be necessary to apply force to the saddle for lowering.
2. With the jack in the level position, remove the oil fill plug. The oil should be level with the bottom of fill hole. If not, top off.
3. Replace fill plug.
4. Check jack operation.
5. Purge air from system as required.

## TROUBLE SHOOT

### SYSTEM AIR PURGE:

1. Turn release valve counterclockwise one full stroke.
2. Pump handle eight full strokes.
3. Turn release valve clockwise to close valve.

## TROUBLE SHOOT

### PROBLEM

Jack will not lift to full height

Jack will not hold load

Lift arm will not lower

Jack feels spongy when lifting

## FACTORY SERVICE

Any hydraulic jack found to be damaged in an accident, **MUST BE REMOVED FROM SERVICE** immediately. Only a factory trained technician with specialized knowledge and facilities. Call customer service department. Annual inspection of the jack is recommended. If you find that your jack is in optimum conditions and the

• **READ, STUDY, AND UNDERSTAND THE INSTRUCTIONS PRIOR TO USE**

• **DO NOT OVERLOAD THIS JACK**

• **THIS JACK IS DESIGNED TO SUPPORT THE LOAD. IN JACK INSTABILITY AND IN JACK INSTABILITY AND IN JACK INSTABILITY AND**

• **THIS IS A LIFTING DEVICE WITH JACK STANDS**

• **DO NOT GET UNDER OR SUPPORTED BY JACK STANDS**

• **DO NOT MOVE OR DOLLY LIFT ONLY ON AREAS OF CENTER LOAD ON SADDLE**

• **NO ALTERATIONS TO FAILURE TO HEED THESE INSTRUCTIONS WILL BE PROPERTY DAMAGE.**

Because of the potential hazard associated with this product, alterations shall be made to the product or supplier.

## Assembling your jack

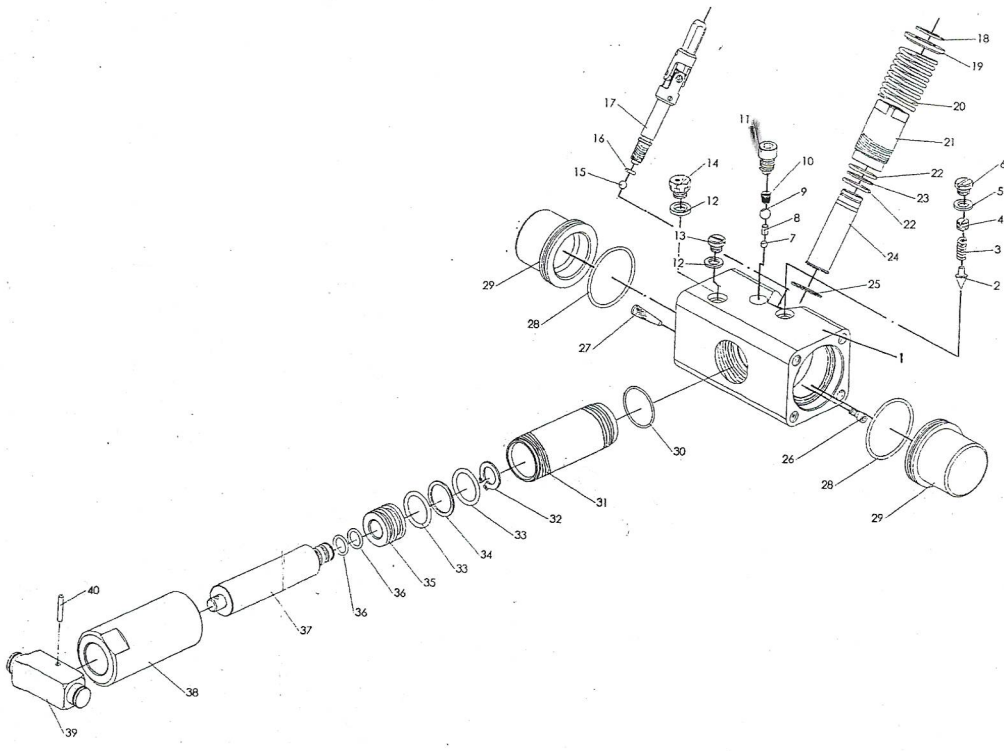
Please check that you have all of the following components:

- 1ea. Aluminum jack chassis
- 1ea. Pumping handle in two parts
- 1ea. Breathing screw

First, remove the retaining clip. Press the yoke(17) down and then remove the retaining clip out from the hole in the yoke (as pictured).



**PART LIST (Diagram #2)**



ITEM NO.	DESCRIPTION	QTY	ITEM NO.	DESCRIPTION	QTY
1	ALUMINUM BASE	1	21	PUMP CASE	1
2	SAFETY VALVE	1	22	O-RING 20x2.65	2
3	RELIEF VALVE SPRING	1	23	BACK-SEAL	1
4	REGULATOR BOLT	1	24	PUMP CORE	1
5	SEAL WASHER	1	25	WASHER	1
6	SEAL BOLT	1	26	BOLT	1
7	STEEL BALL 5.5	1	27	OIL STRAINER	1
8	BUSHING	1	28	O-RINGS 3x3.55	2
9	STEEL BALL 9	1	29	OIL COVER	2
10	H-SPRING	1	30	O-RING 3.65x1.8	1
11	HIGH-PRESSURE BOLT	1	31	HYDRAULIC CYLINDER	1
12	SEAL WASHER	2	32	SNAP RING 16	1
13	SEAL BOLT	1	33	O-RING 30x3.55	2
14	BREATHING-SCREW	1	34	BACK-SEAL	1
15	STEEL BALL 7	1	35	BUSHING	1
16	O-RING 7.1x2.65	1	36	O-RING 16x2.4	2
17	DISCHARGE VALVE ROD	1	37	RAM	1
18	SNAP RING 20	1	38	ALUMINUM CYLINDER	1
19	PISTON COVER	1	39	BLOCK LINKAGE	1
20	PRESS SPRING	1	40	SPRING PIN 4x24	1



**Torin Jacks, Inc.**  
 2210 E. Artesia Blvd. Long Beach,  
 CA. 90805 USA

FOR CUSTOMER SERVICE  
 Service à la clientèle  
**1-888-44-TORIN**

MADE IN CHINA