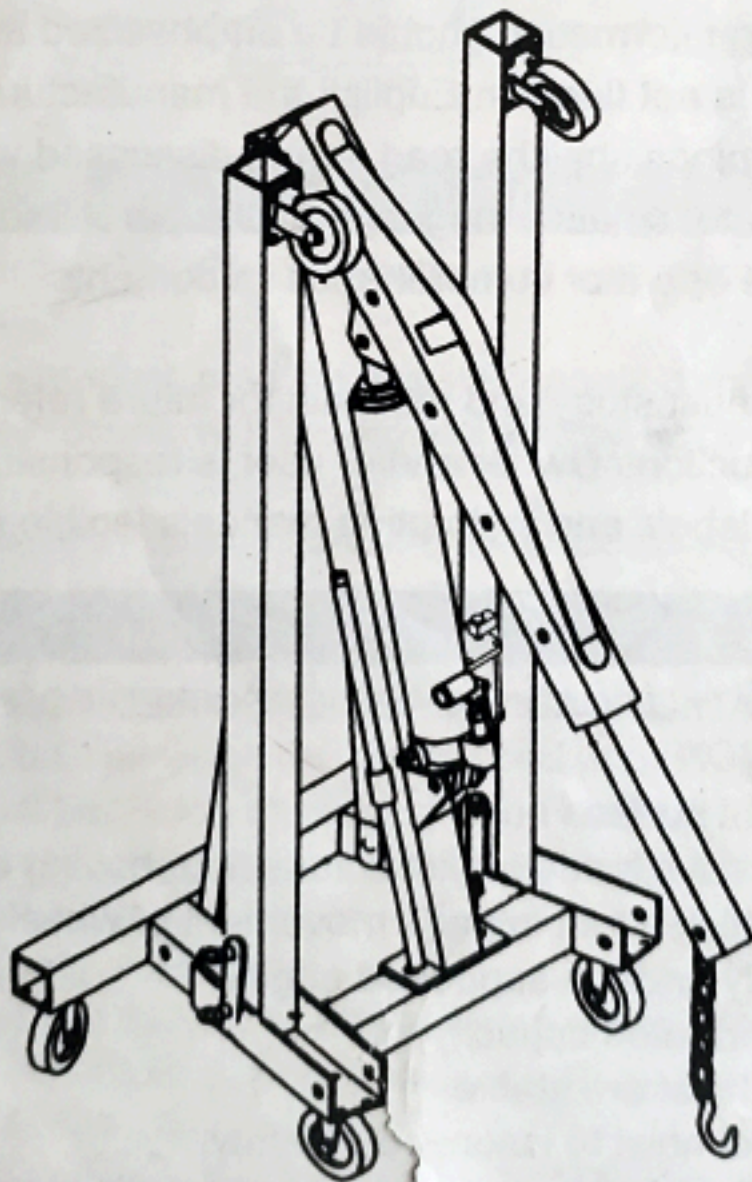
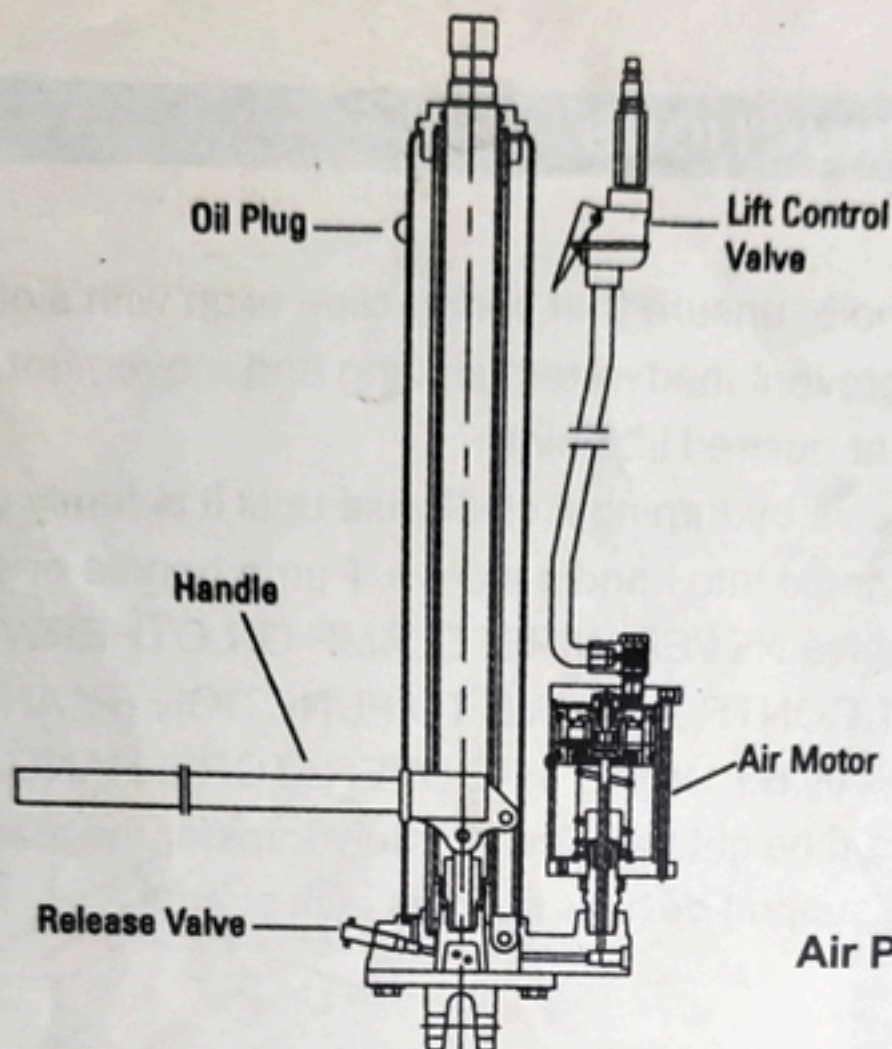


Torin™
BIG
RED JACKS

ITEM # 33120

2 Ton Capacity
AIR/HYDRAULIC
SHOP CRANE

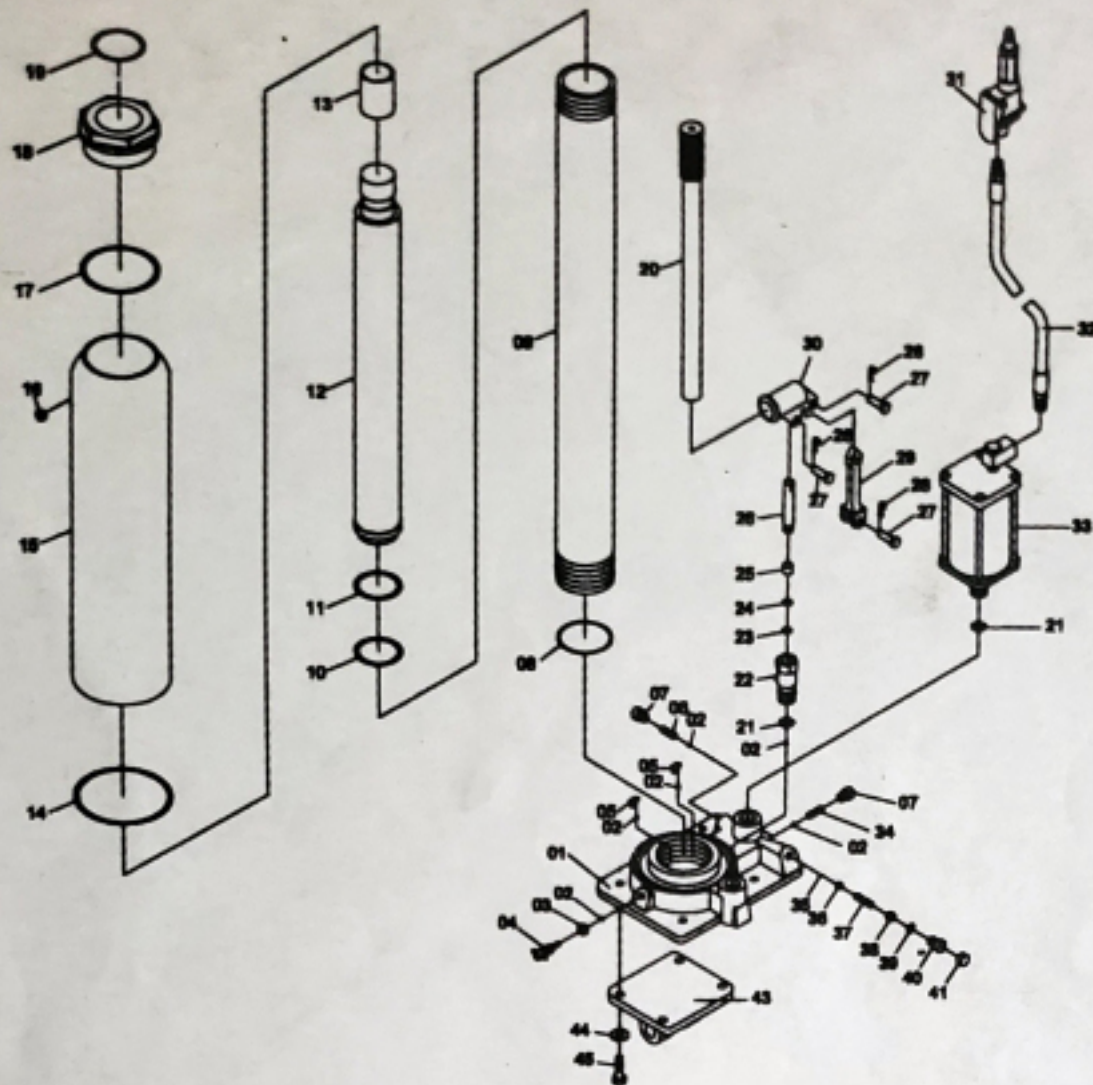




**Air Pressure Range:
0.8-0.95Mpa**

BEFORE USE

1. Verify that the product and the application are compatible. If in doubt call the manufacturer.
2. Before using the product, read the owner's manual completely and familiarize yourself thoroughly with the product and the hazards associated with its improper use.
3. Open release valve by turning handle(counter-clockwise no more than 2 full turns).
4. With ram fully retracted,locate and remove the oil filler plug. Insert the handle into the handle sleeve.then pump 6 to 8 strokes. This will help release any pressurized air which may be trapped within the reservoir.Ensure the oil level is just below the oil filler lug hole.Re-install the oil filler plug.
5. Pour a teaspoon of good quality,air tool lubricant into the air supply inlet of the lift control valve.(See illustration) Connect to air supply and operate for 3 seconds to evenly distribute lubricant.
6. Check to ensure that the jack rolls freely (if so equipped) and that the pump operates smoothly before putting into service. Replace worn or damaged parts and assemblies with seller's only.
7. This product is fitted to accept the popular 1/4" NPT nipple of your choice, ensure that thread tape or compound is used when servicing connections.



PARTS LIST

No.	Description	Qty .	No.	Description	Qty .
01	Base Set	1	23	"O"-Ring	1
02	Ball	6	24	Nylon Ring	1
03	Seal	1	25	Back Up Ring	1
04	Release Valve	1	26	Piston	1
05	Ball Cup	2	27	Pin	3
06	Spring	1	28	"R"-Pin	3
07	Screw	2	29	Connector	1
08	Nylon Ring	1	30	Handle Bracket	1
09	Cylinder	1	31	Lift Control Valve	1
10	"O"-Ring	1	32	Air Hose	1
11	Cup Seal	1	33	Air Motor	1
12	Ram	1	34	Spring	1
13	Ring	1	35	Ball	1
14	Packing	1	36	Ball Cup	1
15	Reservoir	1	37	Spring	1
16	Fillde Plug	1	38	Screw	1
17	Nylon Ring	1	39	"O"-Ring	1
18	Top Nut	1	40	Screw	1
19	"O"-Ring	1	41	Plastic Cap	1
20	Handle	1	43	"U" Frame	1
21	Copper Wsher	2	44	Washer	4
22	Pump Cylinder	1	45	Bolt M10 x 20	4