

OPERATOR'S MANUAL



**1500KGS
TRANSMISSION FLOOR JACK**

Lifting Capacity	Min. Height	Max. Height	Net Weight	Gross Weight	Package Size
1500KG	221mm	940mm	133Kg	158Kg	115x72x40cm

WARNING!!!

- Study, understand, and follow all instructions.
- Inspect the jack before each use; do not use the jack if it is damaged, altered, or in poor condition.
- No alterations shall be made to this product.
- Only attachments and/or adapters supplied by the manufacturer shall be used.
- Use the jack only on hard, level surfaces.
- Adequately support the vehicle before starting repairs.
- Use of this product is limited to the removal, installation, and transportation in the lowered position of transmissions, transfer cases, and trans-axes.
- The load must never exceed the rated jack capacity.
- Stay out from underneath the load at all times.
- Secure the load to the jack.
- Lower the load completely before moving the jack.
- SLOWLY AND CAREFULLY move the jack around corners, because the load could tip.
- Use only approved hydraulic fluid. The use of alcohol or hydraulic brake fluid could damage seals and result in jack failure.

OPERATING INSTRUCTIONS

1. Position the jack under the transmission.
2. Close the control valve. Operate the pump handle to raise the boom and align the mounting plate with the transmission.
3. Remove the transmission according to the instructions in the vehicle service manual.
4. Position the transmission on the mounting plate, which may be tilted forward and backward or side-to-side by turning the tilt knob.
5. Secure the transmission to the mounting plate.
6. Lower the load by slowly opening the control valve. The control valve regulates how fast the boom is lowered.

MANTENANCE

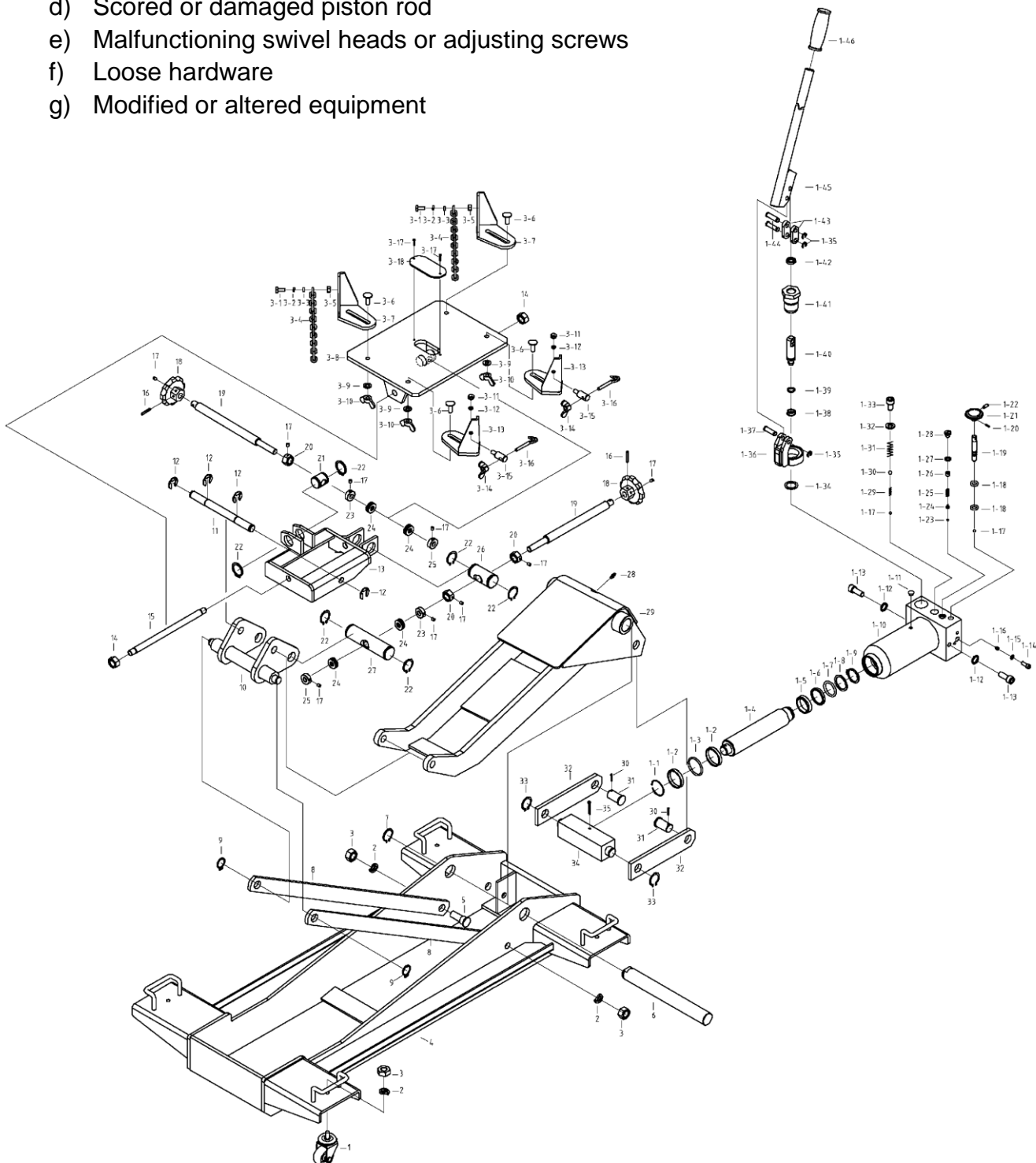
IMPORTANT: Dirt is the greatest single cause of failure in hydraulic units. Keep the jack clean and well lubricated to prevent foreign matter from entering the system. If the jack has been exposed to rain, snow, sand, or grit, it must be cleaned before it is used.

1. Store the jack in a well-protected area where it will not be exposed to corrosive vapors, abrasive dust, or any other harmful elements.
2. Regularly lubricate the moving parts.
3. To check the oil level, place the jack on level ground and lower the lift arm completely. Remove the filler plug. The oil level should be within 3/8" of the filler plug hole. Do not

overfill. If necessary, add approved anti-wear hydraulic jack oil, and install the filler plug again. **IMPORTANT: The use of alcohol, hydraulic brake fluid or detergent motor oil could damage the seals and result in jack failure.**

4. Inspect the jack before each use. Take corrective action if the following problems are found:

- a) Cracked or damaged housing
- b) Excessive wear, bending, or other damage
- c) Leaking hydraulic fluid
- d) Scored or damaged piston rod
- e) Malfunctioning swivel heads or adjusting screws
- f) Loose hardware
- g) Modified or altered equipment



PARTS LIST

Item No.	Description	QTY	Item No.	Description	QTY	Item No.	Description	QTY
1	Swivel Caster	4	34	Connecting Bar	1	1-32	Copper Washer	1
2	Washer	6	35	Pin	1	1-33	Bolt	1
3	Nut	6	1-1	Snap Ring	1	1-34	Copper Washer	1
4	Frame	1	1-2	Bushing	2	1-35	Snap Ring	3
5	Bolt	2	1-3	O-ring	1	1-36	Pump Seat	1
6	Shaft	1	1-4	Piston Rod	1	1-37	Pin	1
7	Snap Ring	1	1-5	Piston Ring	1	1-38	Y-seal	1
8	Connecting Bar	2	1-6	Sealing Washer	1	1-39	O-ring	1
9	Snap Ring	2	1-7	O-ring	1	1-40	Pump Plunger	1
10	Bracket	1	1-8	O-ring Retainer	1	1-41	Pump Cylinder	1
11	Shaft	1	1-9	Snap Ring	1	1-42	Dustproof	1
12	Snap Ring	4	1-10	Oil Cylinder Assy	1	1-43	Rod Joint	2
13	Bracket	1	1-11	Oil Filler Plug	1	1-44	Pin	2
14	Nut	2	1-12	Washer	2	1-45	Handle	1
15	Bolt	1	1-13	Bolt	2	1-46	Handle Sleeve	1
16	Pin	2	1-14	Bolt	1	3-1	Bolt	2
17	Screw	9	1-15	Copper Washer	1	3-2	Washer	2
18	Knob	2	1-16	Throttle	1	3-3	Washer	2
19	lead Screw	2	1-17	Steel Ball	2	3-4	Safety Chain	2
20	Nut	3	1-18	O-ring	2	3-5	Nut	2
21	Shaft	1	1-19	Oil Release Valve Rod	1	3-6	Bolt	4
22	Snap Ring	6	1-20	Pin	1	3-7	Bracket	2
23	Nut	2	1-21	Release Knob	1	3-8	Universal Saddle	1
24	Thrust Ball Bearing	4	1-22	Screw	1	3-9	Washer	4
25	Nut	2	1-23	Steel Ball	1	3-10	Nut	4
26	Shaft	1	1-24	Ball Seat	1	3-11	Nut	2
27	Shaft	1	1-25	Spring	1	3-12	Washer	2
28	Grease Fitting	1	1-26	Screw	1	3-13	Bracket	2
29	Arm	1	1-27	Sealing Washer	1	3-14	Nut	2
30	Pin	2	1-28	Bolt	1	3-15	Bolt	2
31	Shaft	2	1-29	Spring	1	3-16	Hook	2
32	Rod Link	2	1-30	Steel Ball	1	3-17	Screw	2
33	Snap Ring	2	1-31	Spring	1	3-18	Close Plate	1