

OPERATOR'S MANUAL

2TON / 3TON LONG FRAME GARAGE JACK



⚠ Read this manual and follow all the safety rules and operating instructions before using this product.

SPECIFICATIONS

Lifting-Capacity (Ton)	Lifting-Height (mm)	Max-Height (mm)	Min-Height (mm)	Gross-Weight (Kg)	Net-Weight (Kg)	Package size (cm)
2TON	660	800	140	63	58	125X47X21
3TON	530	670	140	59	56	118X47X21

WARNING!!

1. This is a lifting device ONLY. Do not move or dolly the vehicle while on the jack.
2. Position this jack to ONLY lift on the areas of the vehicle as specified by the vehicle manufacture.
3. After lifting the vehicle, ALWAYS support the load with appropriately rated vehicle support stands BEFORE working on the vehicle.
4. Do not overload this jack beyond its rated capacity. Overloading can cause damage to or failure of the jack.
5. This jack is designed ONLY for use on hard level surfaces capable of sustaining the load. Use on other than hard level surfaces can result in jack instability and possible loss of load.
6. Center load on jack saddle BEFORE lifting vehicle. Off-center loads and loads lifted when the jack is not level can cause loss of load or damage to the jack.
7. Study, Understand and follow all instructions in this manual BEFORE operating the jack.
8. Failure to read these warning may result in loss of load, damage to the jack and/or jack failure resulting in personal injury or property damage.

ASSEMBLY INSTRUCTIONS

Note: For Parts identification, refer to parts list

1. The pedal link (#57) is already assembled to the body of the jack, To attach the foot pedal (#59), pass the nut (#58), and bolt (#60) through the pedal link and foot pedal (#59), then tighten.
2. The handle (#69) must be inserted into the handle socket (#63). Before doing this, Loosen the nut (#65) and bolt (#62) just below the hole for the handle. This will make it easier to insert the handle into the hole. With the handle inserted and seated, re-tighten the nut and bolt.

OPERATING INSTRUCTIONS

Important: Sometimes during shipping and handling, air gets into the hydraulic system, causing poor lifting performance. Before initial operation, to purge any air from the system, open the release valve at the top of the jack handle by turning it counter-clockwise. Place a weight on the saddle. Pump the jack handle rapidly several times, then close the release valve.

Raising jack

1. Turn handle knob (#71) clockwise until resistance is felt to close release valve. Do not over tighten.
2. Place jack directly under object to be lifted. Make sure saddle takes up weight firmly and centrally. Check positioning under slight load to confirm jack or load will not slip.
3. Raise jack by pumping handle until desired height is reached. After lifting, secure load by appropriate means. Do Not use jack as the only means of support .

Lowering jack

Slowly turn handle knob (#71) counter-clockwise. Speed of descent is controlled by amount release valve is turned.

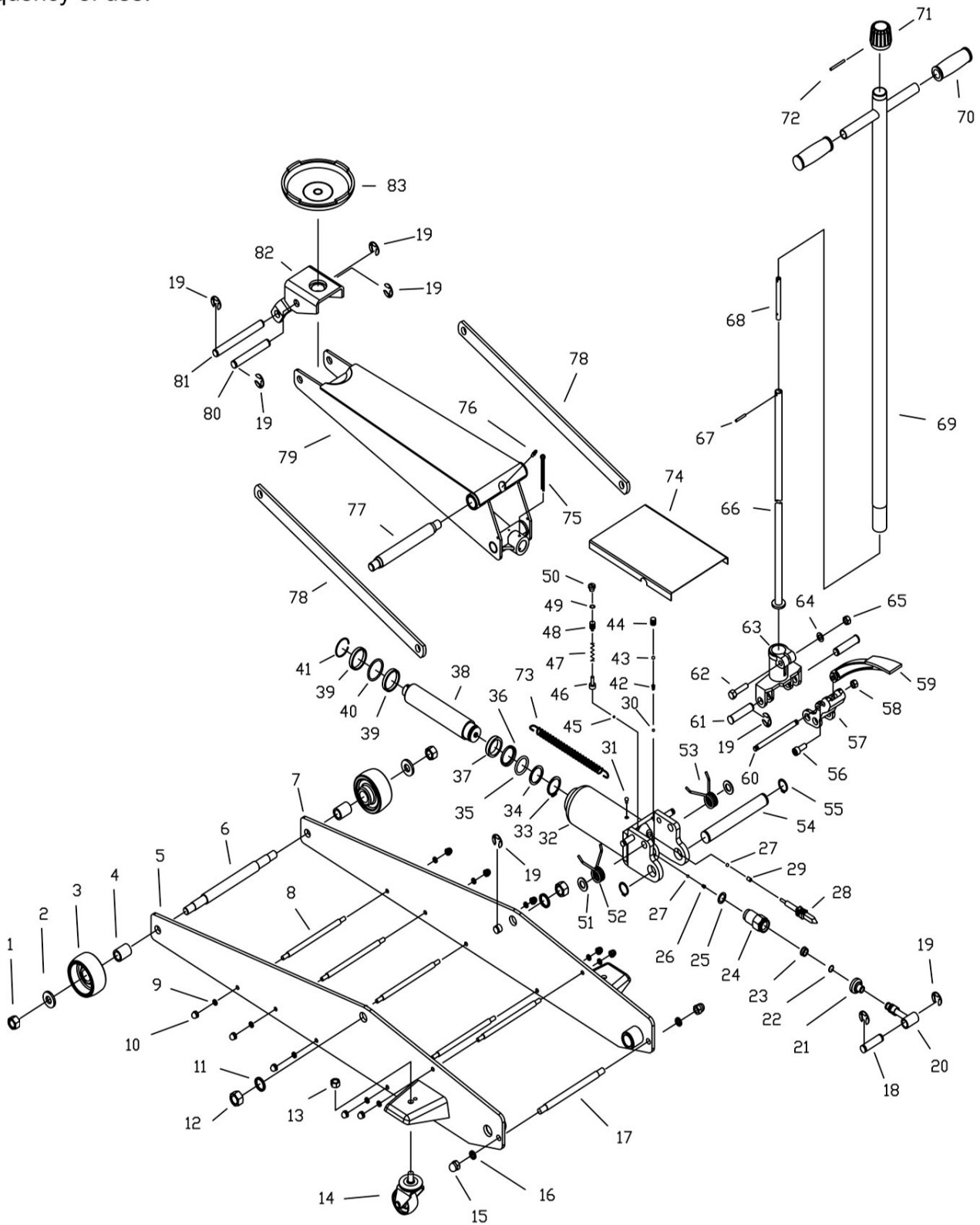
MAINTENANCE

Checking hydraulic oil level

1. Open release valve (turn handle knob (#71) counter-clockwise) and push ram to its lowest position.
2. Remove oil filler plug (#31).
3. Fill the clean hydraulic jack oil, Do not use hydraulic brake fluid.
4. Reinstall oil filler plug (#31).

Lubrication

Add lubricating oil to all moving and pivoting with light oil once or twice a month, depending on frequency of use.



PARTS LIST

Item	Description	Q'ty	Item	Description	Q'ty
1	Nut M6X1.5	2	43	Steel ball Φ 6.35	1
2	Front wheel washer	2	44	Screw M8X8	1
3	Front wheel	2	45	Steel ball Φ 4	1
4	Front wheel bushing	2	46	Valve seat	1
5	Left frame	1	47	Spring	1
6	Front wheel shaft	1	48	Pressure screw	1
7	Right frame	1	49	Sealing washer	1
8	Shaft A	5	50	Safety valve screw	1
9	Washer Φ 8	10	51	Washer	2
10	Nut M8	10	52	Torsion spring B	1
11	Washer Φ 18	2	53	Torsion spring A	1
12	Nut M18X1.5	2	54	Rear shaft	1
13	Nut M12X1.25	2	55	Snap ring Φ 26	2
14	Rear caster	2	56	Bolt M10X60	1
15	Nut M12	2	57	Pedal Link	1
16	Washer Φ 12	2	58	Nut M10	1
17	Shaft C	1	59	Foot pedal	1
18	Pump plunger pin	1	60	Bolt	1
19	Snap ring Φ 16	10	61	Torsion shaft A	1
20	Pump plunger	1	62	Bolt M10X60	1
21	Dust proof boot	1	63	Handle socket	1
22	O-ring	1	64	Washer Φ 10	1
23	Y-seal	1	65	Nut M10	1
24	Pump cylinder	1	66	Control rod	1
25	Copper washer	1	67	Pin Φ 4X20	1
26	Spring	1	68	Control rod	1
27	Steel ball Φ 6	2	69	Handle	1
28	Release valve rod	1	70	Handle sleeve	2
29	Sealing	1	71	Handle Knob	1
30	Steel ball Φ 5	1	72	Pin Φ 4X50	1
31	Oil filler plug	1	73	Pulling spring	2
32	Power unit	1	74	Top cover	1
33	Snap ring	1	75	Pin Φ 5X50	1
34	O-ring retainer	1	76	Oil nipple	1
35	O-ring	1	77	Arm shaft	1
36	Sealing washer	1	78	Connection rod	2
37	Piston ring	1	79	Arm ass'y	1
38	Piston rod	1	80	Arm pin	1
39	Washer	2	81	Shaft	1
40	O-ring	1	82	Saddle base	1
41	Snap ring	1	83	Saddle	1
42	Spring	1	84		