

Inspection:

Visual inspection should be made before each use of the service jack, checking for leaking hydraulic fluid and damaged, loose or missing parts. Each jack must be inspected by a manufacturer's repair facility immediately, if accidentally subjected to an abnormal load or shock. Any jack which appears to be damaged in any way, found to be badly worn, or operates abnormally **MUST BE REMOVED FROM SERVICE** until necessary repairs are made by a manufacturer's authorized repair facility. It is recommended that an annual inspection of the jack be made by a manufacturer's authorized repair facility and that any defective parts, decals or warning labels be replaced with manufacturer's specified parts.

A list of authorized repair facilities is available from the manufacturer.

Owner/User Responsibility:

The owner and/or user must have a thorough understanding of the manufacturer's operating instructions and warnings before using the service jack. Personnel involved in the use and operation of equipment shall be careful, competent, trained, and qualified in the safe operation of the equipment and its proper use when servicing motor vehicles and their components. Warning information should be emphasized and understood. If the operator is not fluent in English, the manufacturer's instructions and warnings shall be read to and discussed with the operator in the operator's native language by the purchaser/owner, making sure that the operator comprehends its contents.

Owner and/or user must study and maintain for future reference the manufacturer's instructions and pertinent warning information. Owner and/or user is responsible for keeping all warning labels and instruction manuals legible and intact. Replacement labels and literature are available from the manufacturer.



THIS OPERATING MANUAL CONTAINS IMPORTANT DETAILS CONCERNING THE SAFE OPERATION OF THIS TOOL. THE USER MUST READ AND UNDERSTAND THESE DETAILS BEFORE ANY USE OF THE TOOL. THIS MANUAL MUST BE RETAINED FOR FUTURE REFERENCE.

! WARNING



- Read, study, understand and follow all instructions before operating this device
- Inspect the jack before each use. Do not use if damaged, altered, modified, in poor condition, leaking hydraulic fluid or unstable due to loose or missing components. Make corrections before using.
- Use only on a hard level surface free from obstructions so the jack is free to reposition itself during lifting and lowering operations.
- Lift only on areas of the vehicle as specified by the vehicle manufacturer.
- User and bystanders must wear eye protection that meets ANSI Z87.1 and OSHA standards.
- Do not use jack beyond its rated capacity. Do not shock load.
- **This is a lifting device only. Immediately after lifting, support the vehicle with jack stands capable of sustaining the load before working on the vehicle.**
- Center load on saddle. Be sure setup is stable before working on vehicle.
- Do not move or dolly the vehicle while on the jack.
- Do not use any materials that may serve as risers, spacers or extenders between the stock lifting saddle and the load.
- Do not use any adaptors that replace the stock lifting saddle unless approved or supplied by the jack manufacturer.
- Always lower the jack slowly and carefully.
- Do not use (or modify) this product for any other purpose than that for which it was designed without consulting the manufacturer's authorized representative.
- Failure to heed these warnings may result in serious or fatal personal injury and/or property damage



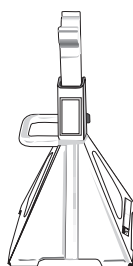
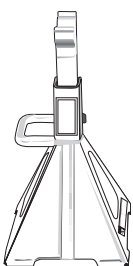
WARNING: This product can expose you to chemicals including nickel, which is known to the State of California to cause cancer and birth defects or other reproductive harm. For more information go to www.P65Warnings.ca.gov.

! WARNING

FOR YOUR SAFETY AND TO PREVENT INJURY:

Use Service Jack for lifting purposes ONLY.

Always support vehicle with jack stands.



Operating Instructions

BEFORE USE: Air may become trapped in the hydraulic system during transit. To purge air:

1. Open release valve by turning handle counterclockwise.
2. Pump handle rapidly 6 full strokes. This will expel air that may have entered oil passages during transit.
3. Close release valve by rotating handle clockwise and pump handle.
4. If lift arm is raised, jack is ready for use. If not, repeat this procedure.

IMPORTANT: Before attempting to raise a vehicle, check vehicle service manual for recommended lifting surfaces.

OPERATION:

1. **To raise load:** Close release valve tightly (by turning handle clockwise). **DO NOT OVERTIGHTEN.** Position jack under load so that saddle will contact load firmly and load is centered so it cannot slip. Operate jack handle until saddle approaches the load. Once again, check to see that saddle is correctly positioned. Raise load to desired height. Place jack stands of appropriate capacity under the vehicle. **DO NOT CRAWL UNDER VEHICLE WHILE LIFTING VEHICLE OR PLACING OR REMOVING JACK STANDS!** Place jack stands at vehicle manufacturer's recommended lift areas that provide stable support for the raised vehicle. Once jack stands are positioned, open the release valve **VERY SLOWLY** (by turning the handle counterclockwise). Lower the load to rest on the jack stands. Then make sure that the release valve on the jack is closed tightly (by turning the handle clockwise).
2. **To lower load:** Re-check to make sure release valve is tightly closed. Then, operate the jack handle until the load is raised enough to remove the jack stands. **DO NOT CRAWL UNDER VEHICLE WHILE LIFTING VEHICLE OR REMOVING THE JACK STANDS!** Once jack stands are removed, open release valve very slowly to lower the vehicle. Lower jack completely so that the vehicle is securely resting on the ground and that the jack no longer makes contact with vehicle.

CAUTION: Keep hands or feet away from the hinge mechanism of the jack.

Alterations

Because of potential hazards associated with this type of equipment, no alterations shall be made to the product.

Maintenance

When adding or replacing hydraulic fluid, always use a quality hydraulic fluid. **DO NOT** use brake fluid, alcohol, detergent motor oil, dirty oil or any fluid other than quality hydraulic fluid. Improper fluids can cause internal damage to the jack and improper or unsafe operation.

ADDING HYDRAULIC FLUID

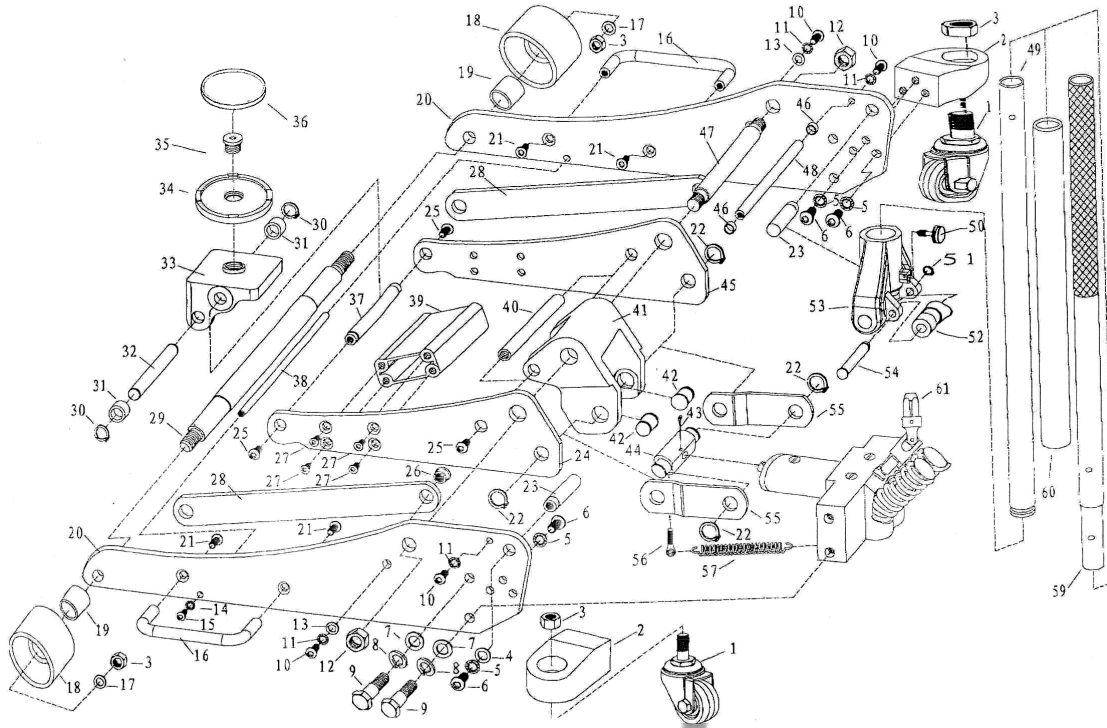
With the saddle fully lowered and the jack on level ground, remove the filler plug. Hydraulic fluid should be filled to the level of the filler plug hole. If the level is below this hole, add hydraulic fluid as needed.

Lubrication

All moving joints require lubrication often. Remove handle and grease the lower end of handle where it rotates in the handle socket. Using a grease gun, grease the lift arm pivot shaft grease fitting until grease appears at the end of the shaft. Oil all lift arm linkages, front wheels and rear casters.

SERVICE JACK SPECIFICATIONS

MODEL NO.	TRJACK
Capacity	2 Tons
Low Height	3.5"
Raised Height	20"
Saddle Diameter (with pad)	4.75"
Handle Length (2 piece)	50"
Chassis Width	13"
Length	28.5"
Net Weight	50 Lbs.
Shipping Wt.	54 Lbs.



Item No.	Part No.	Description	Qty.	Item No.	Part No.	Description	Qty.
1	RS660201	Rear Caster Assembly (incl #3)	2	31		Link Rod Spacer	2
2		Rear Caster Bracket	2	32		Radius Linkage Axle	1
3	RS660203	Locking Nut M12	4	33		Saddle Base	1
4		Washer M10	2	34	RS660234	Saddle	1
5		Tooth Washer M10	8	35		Saddle Bolt	1
6		Bolt M10 x 25	8	36	RS6602SP	Rubber Saddle Pad	1
7		Washer M14	4	37		Saddle Base Axle	1
8		Spring Washer M14	4	38		Rod	1
9		Bolt	4	39		Lift Arm Core	1
10		Bolt M8 x 20	4	40		Axle, Lift Arm Mounting Plate	1
11		Tooth Washer M8	4	41		Lift Arm Mounting Plate	1
12		Locking Nut M18	2	42		Linkage Pin	2
13		Washer M8	2	43		Pin 4 x 40	1
14		Tooth Washer m6	2	44		Linkage Block	1
15		Bolt M6 x 20	2	45		Lift Arm Right Side Plate	1
16	RS660216	Carry Handle	1	46		Rubber Guard	2
17		Washer (included with #18)	2	47		Lift Arm Axle	1
18	RS660218	Front Wheel Assembly (incl #3,17 & 19)	2	48		Rod	1
19		Bushing (incl w/#18)	2	49	RS660249	Lower Handle Section	1
20		Side Plate	2	50	RS660250	Handle Set Screw	1
21	RS660221	Bolt M8 x 25	4	51		Retaining Ring 12 (included with #53)	1
22		Washer M19	4	52		Pump Roller (included with #53)	1
23		Yoke Axle	2	53	RS660253	Handle Yoke Assembly (incl #51-54)	1
24		Lift Arm Left Side Plate	1	54		Pump Roller Axle (incl w/#53)	1
25		Bolt M10 x 16	4	55		Linkage	2
26		Radius Linkage Axle Bolt	2	56		Bolt M6 x 25	2
27		Bolt M8 x 22	8	57		Lift Arm Return Spring	2
28		Radius Linkage	2	59	RS660259	Upper Handle Section	1
29		Front Wheel Axle	1	60	RS6602HB	Handle Bumper	1
30		Retaining Ring 16	2	61	RS660261	Release Assembly	1

NOTE: Only items identified by part number are available for purchase.

* Replaceable only through an authorized hydraulic service center.

Proper Storage

It is recommended that the service jack be stored in a dry location with all wheels touching the ground on a relatively level surface.

Troubleshooting

Important: Service jacks are self-contained devices used for lifting, but not sustaining, a partial vehicular load. In accordance with ASME-PALD standard, section 10-4.1.2 Load Sustaining Test: "A load not less than the rated capacity...shall not lower more than 1/8" (3.18mm) in the first minute, nor a total of .1875" (4.76mm) in 10 minutes." Leak down within this range is considered normal operation and is NOT a warrantable defect.

SYMPTOM Jack will not lift rated load or leaks down excessively Jack will not lift rated load to its full height Jack will not lower rated load completely Jack will not lift rated load smoothly or jack feels spongy Jack will not hold rated load or handle rises					SOLUTION
✓					The release valve is not closed. Turn the valve clockwise tightly. If this does not work, remove handle, lubricate handle receptacle and handle end, then retry.
✓	✓				Low on hydraulic fluid. Refill the jack to the correct level of hydraulic fluid, using an approved hydraulic fluid or jack oil.
✓					Pump seals or back-up ring may be defective. Clean hydraulic fluid passages, replace seals and refill hydraulic fluid. (Must be serviced by qualified service center)
	✓		✓		The hydraulic system has trapped air. Open the release valve, pump handle rapidly (4) full strokes to purge air, close release valve.
		✓			Return spring is broken or linkages are binding. Replace spring if broken. Grease pivot shaft and all lift arm linkages.
				✓	Discharge ball is not sealing hydraulic system and oil may be dirty. Manually flush hydraulic system. Open the release valve, as required, to raise and lower the lift arm. Manually raise and lower lift arm.