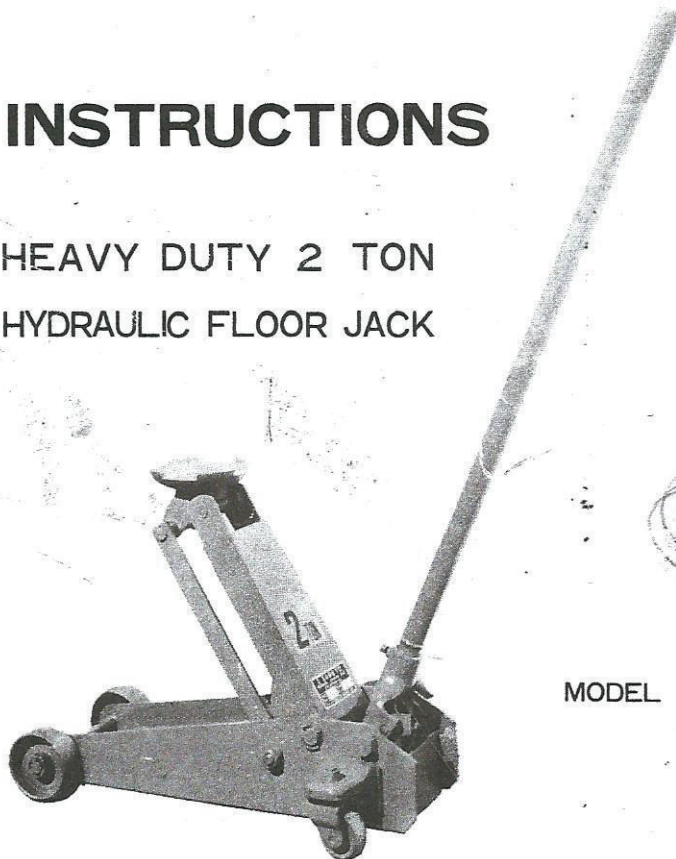


Shaft 1.180" DIA. # 35

SEAL #40 HAS VALQUA WRITTEN ON TOP

INSTRUCTIONS

HEAVY DUTY 2 TON
HYDRAULIC FLOOR JACK



MODEL NO. SJ-2

SJ-2 Type^(4400 Lbs)_{2 ton}
TROUBLE SHOOTING

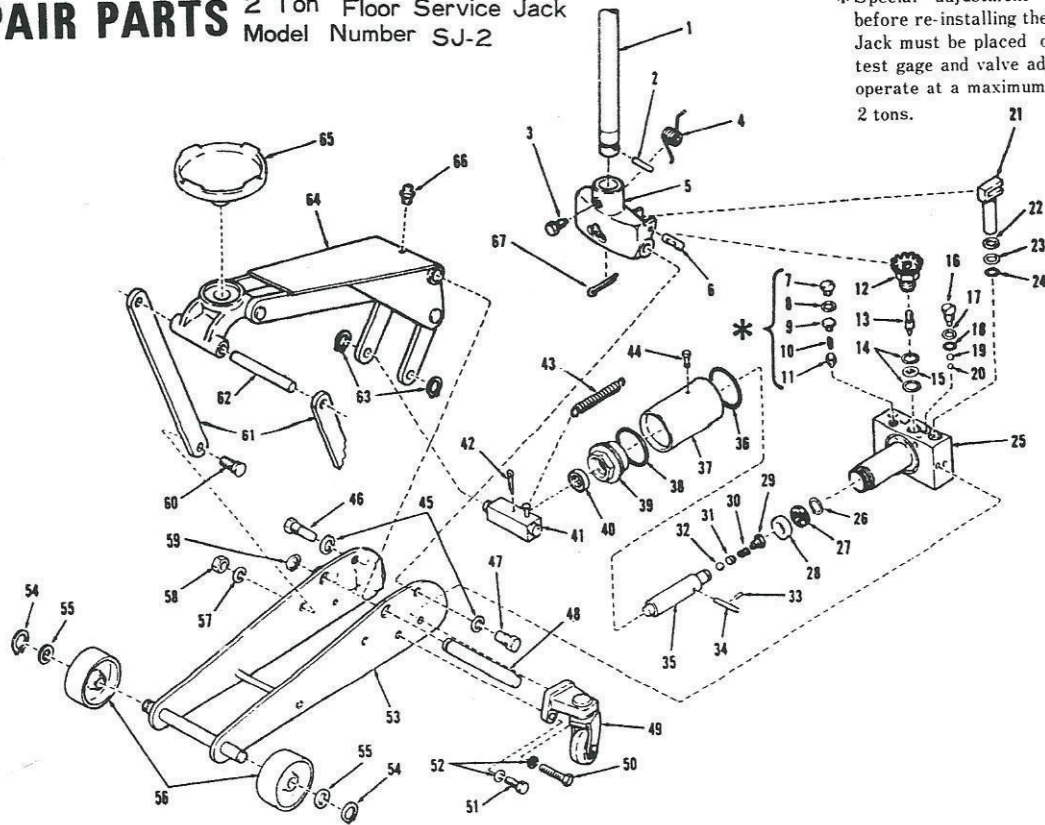
TROUBLE	POSSIBLE CAUSE	REMEDY
Will not lift load at all	1) No Oil in system 2) Release Valve not closed 3) Delivery Valve and/or By-Pass Valve not functioning 4) Defective Packings ("O" rings)	1) Fill to prescribed level 2) Turn handle clockwise tightly 3) Check for dirt or foreign matter—clean 4) Replace Packings
Will lift load only part way	5) Oil level low	5) Fill to prescribed level
Will lift load, but will not hold	6) The following Valve or Valves leaking: (a) Suction Valve, (b) Delivery Valve, (c) Release Valve, (d) By-Pass Valve. 7) Packings worn out or defective	6) Inspect Valves—clean and adjust as needed 7) Replace Packings
Jack will not lower	8) Release Valve stuck—probably dirt or foreign matter	8) Transfer load & clean Release Valve
Poor lifting	9) Defective Pump Packings and/or Valves malfunctioning. 10) Dirty Oil 11) Air in Hydraulic System	9) Clean Valves, replace Packings 10) Change Hydraulic Oil 11) Purge Air from system

SPECIFICATIONS

Model No.	Capacity Metric (Lbs)	Min Saddle Height mm (Inch)	Max Saddle Height mm (Inch)	Power Lift mm (Inch)	Overall Width at cast-ers mm (Inch)	Overall Length mm (Inch)	Handle Length mm (Inch)	Frame Height mm (Inch)	Frame Width	Net Weight Kgs (Lbs)	Requir-ed Oil Litre (Gal)	Usage
SJ-2	2 Ton (4400)	130 (5.12")	500 (19.69")	370 (14.57")	380 (14.96")	650 (25.59")	970 (38.19")	155 (6.10")	170 (6.69")	39 (85.8)	0.2 (0.05)	Passenger Cars

REPAIR PARTS 2 Ton Floor Service Jack Model Number SJ-2

*Special adjustment required before re-installing these parts. Jack must be placed on a load test gage and valve adjusted to operate at a maximum load of 2 tons.



Part No.	Description	Part No.	Description	Part No.	Description
1	Handle	24	O-Ring	47	Shaft (A) handle
2	Pin, Spring	25	Oil box assy.	48	Pin arm
3	Set screw, handle	26	Ring, snap	49	Caster Assy.
4	Spring	27	Packing, U. type	50	Bolt,
5	Handle block assy.	28	Retainer, ram packing	51	Bolt,
6	Connecting pin plunger	29	Screw, by-pass	52	Lockwasher, spring
7	Cap plug, safety overload valve	30	Spring	53	Frame assy.
8	Packing, rubber	31	Retainer, spring	54	Ring, snap
9	Retainer	32	Ball, steel	55	Washer
10	Spring	33	Valve pin, by-pass	56	Wheel, front
11	Valve, safety overload/Factory Adj.	34	Limit pin, by-pass	57	Lockwasher, spring
12	Release valve assy.	35	Rod, piston	58	Nut
13	Valve, release	36	O-Ring	59	Ring, snap
14	Packing, copper	37	Tank, oil reservoir	60	Pin (B), link
15	Collar	38	O-Ring	61	Rod, link
16	Bolt	39	Nut, tank	62	Pin (A), link rod
17	Ring, back up	40	Seal, oil	63	Ring, Snap
18	O-Ring	41	Connecting joint, piston	64	Arm Assy.
19	Ball, steel-delivery valve	42	Cotter Pin	65	Saddle
20	Ball, steel-suction valve	43	Spring	66	Grease nipple
21	Plunger, pump	44	Plug, oil filter	67	Pin, cotter
22	Seal, oil	45	Lockwasher, spring		
23	Ring, back up	46	Shaft (B) handle		

Maintaining Oil Level

IMPORTANT: When adding or replacing oil, always use a good grade, Hydraulic Jack Oil (or transmission oil, turbine oil, etc.). Avoid mixing types of oil. **DO NOT** use Brake Fluid, Alcohol, Glycerine, detergent motor oil, or dirty oil. Improper fluid can cause serious internal damage to Jack.

Adding Oil: With Saddle fully lowered & jack on level ground, remove Filler Cap. Oil level should be approx. 3/16" below cap hole. If low, add oil as needed.

Replacing Oil: for better performance & long life, replace oil supply once a year. To drain oil, remove Filler Plug & Release Valve. **BE VERY CAREFUL** not to permit dirt or foreign matter to get into the system.

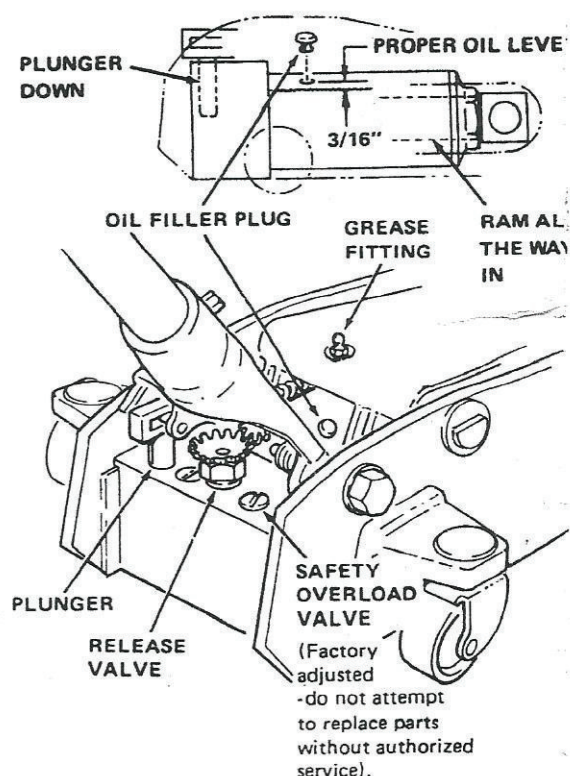
Lubrication

Add grease to Upper Arm Grease Fitting every 3 months.

Preventing Rust

Check Ram & Plunger every 3 months for any signs of rust or corrosion. Clean as needed and wipe with an oily cloth.

When not using the jack, always leave the Saddle & Pump Plunger all the way down.



**SUNEX INTERNATIONAL
GREENVILLE, S.C. 29608
U.S.A.**