

AIR LIFT MODEL 4000

INSTRUCTIONS FOR REPLACING PISTON CUP PACKING

REF: PARTS LIST DRAWING NO. 4000 AND SHEET NO. AL-4000

DISCONNECT AIR LINE FROM AIR VALVE NO. L-15.

AIR LIFT MUST BE UP-ENDED FORWARD AS SHOWN IN SHEET NO. AL-4000.

REMOVE PIPE PLUG NO. L-13.

MANUALLY FULL BASE ASSEMBLY L-1 FROM TOP ASSEMBLY L-11 UNTIL SAFETY STOP BOLT NO. L-4 IS IN LINE WITH ACCESS HOLE NO. L-25.

REMOVE SAFETY STOP BOLT NO. L-4 AND REMOVE BASE ASSEMBLY L-1 FROM TOP ASSEMBLY L-11.

REMOVE PISTON BOLT AND NUT NO. L-5 AND REMOVE BASE ASSEMBLY CLEAR OF TOP ASSEMBLY.

REMOVE CUP PACKING NO. L-8 AND DISCARD.

INSTALL NEW CUP PACKING ONTO PISTON NO. L-6, MAKING SURE CUP PACKING IS CENTERED ONTO PISTON WITH EQUAL OVERHANG ALL AROUND PISTON. SECURE CUP PACKING WITH WASHER NO. 9 AND BOLT NO. 10.

REMOVE ALL GREASE FROM INSIDE WALL OF TOP ASSEMBLY CYLINDER NO. 11. WASH INSIDE WALL WITH CLEANING SOLVENT TO REMOVE ALL FOREIGN MATERIAL.

COVER NEW CUP PACKING NO. L-8 WITH NEW GREASE SUPPLIED. APPLY BALANCE OF NEW GREASE TO INSIDE WALL OF TOP ASSEMBLY CYLINDER NO. 11. APPLY AN EVEN COAT OF GREASE TO ENTIRE AREA OF CYLINDER.

PLACE SAFETY LATCH HANDLE L-17 AS SHOWN ON SHEET AL-4000 WITH THE HANDLE POINTING TOWARD CYLINDER.

REPLACE BASE ASSEMBLY L-1 INTO TOP ASSEMBLY L-11 AND REINSTALL PISTON L-6 AND CUP PACKING NO. L-8 ASSEMBLY ONTO POST OF BASE ASSEMBLY.

REINSTALL PISTON BOLT AND NUT NO. L-5.

INSERT CUP PACKING INTO CYLINDER TUBE, MAKING SURE LIP OF CUP PACKING IS NOT DAMAGED IN ASSEMBLY.

NOTE: EXTREME CAUTION MUST BE TAKEN IN ORDER TO PREVENT DAMAGE TO CUP PACKING WHEN PISTON AND CUP PACKING IS INSERTED INTO CYLINDER.

RE-ALIGN ACCESS HOLE L-25 IN TOP ASSEMBLY WITH SAFETY STOP BOLT HOLE NO. L-4 AND REPLACE SAFETY BOLT.

NOTE: THIS BOLT MUST BE INSTALLED TO PREVENT TOP ASSEMBLY FROM BEING BLOWN OFF BASE ASSEMBLY.

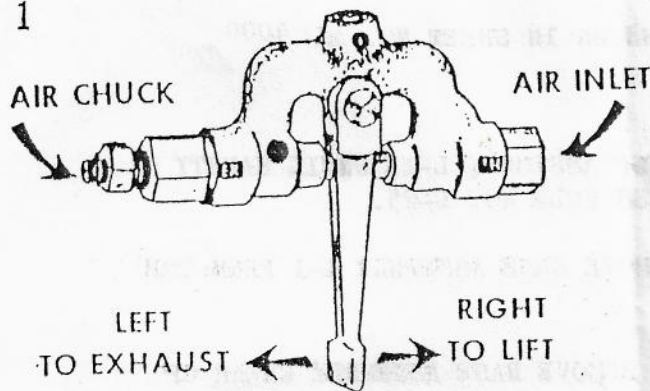
PLACE AIR LIFT ASSEMBLY IN AN UP-RIGHT POSITION ALLOWING TOP ASSEMBLY TO RETURN TO LOWEST POSITION.

REPLACE PIPE PLUG NO. L-13.

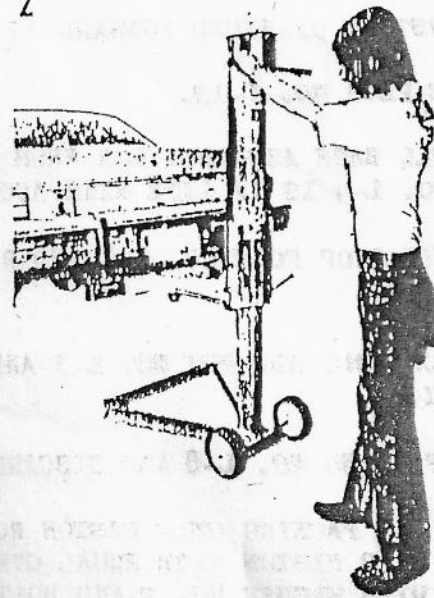
AIR-LIFT JACK

Operation & Maintenance Hints

1

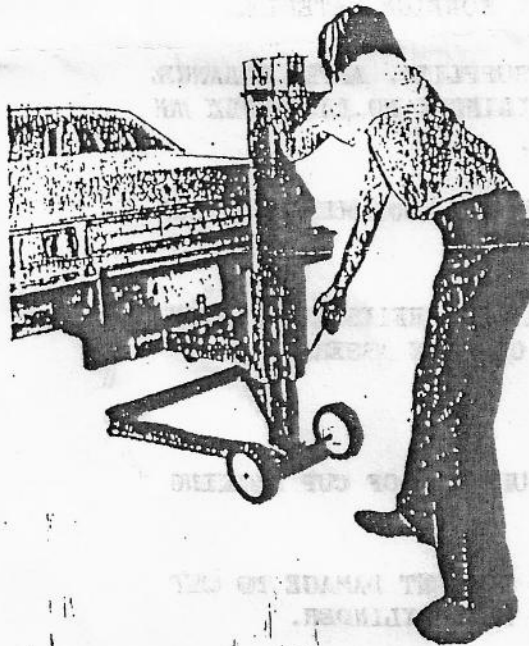


2



2 To lift the vehicle to the desired height, apply air through the air valve; by using an air chuck or connecting an air line to the inlet, and actuating to the right, to lift. (see photo 1).

To engage the safety latch, release just enough air, to lower and allow safety latch to engage, by actuating the exhaust side of the air valve, to the left. (see photo 1).



LIFTING CAPACITY

5000 lb @ 150 PSI

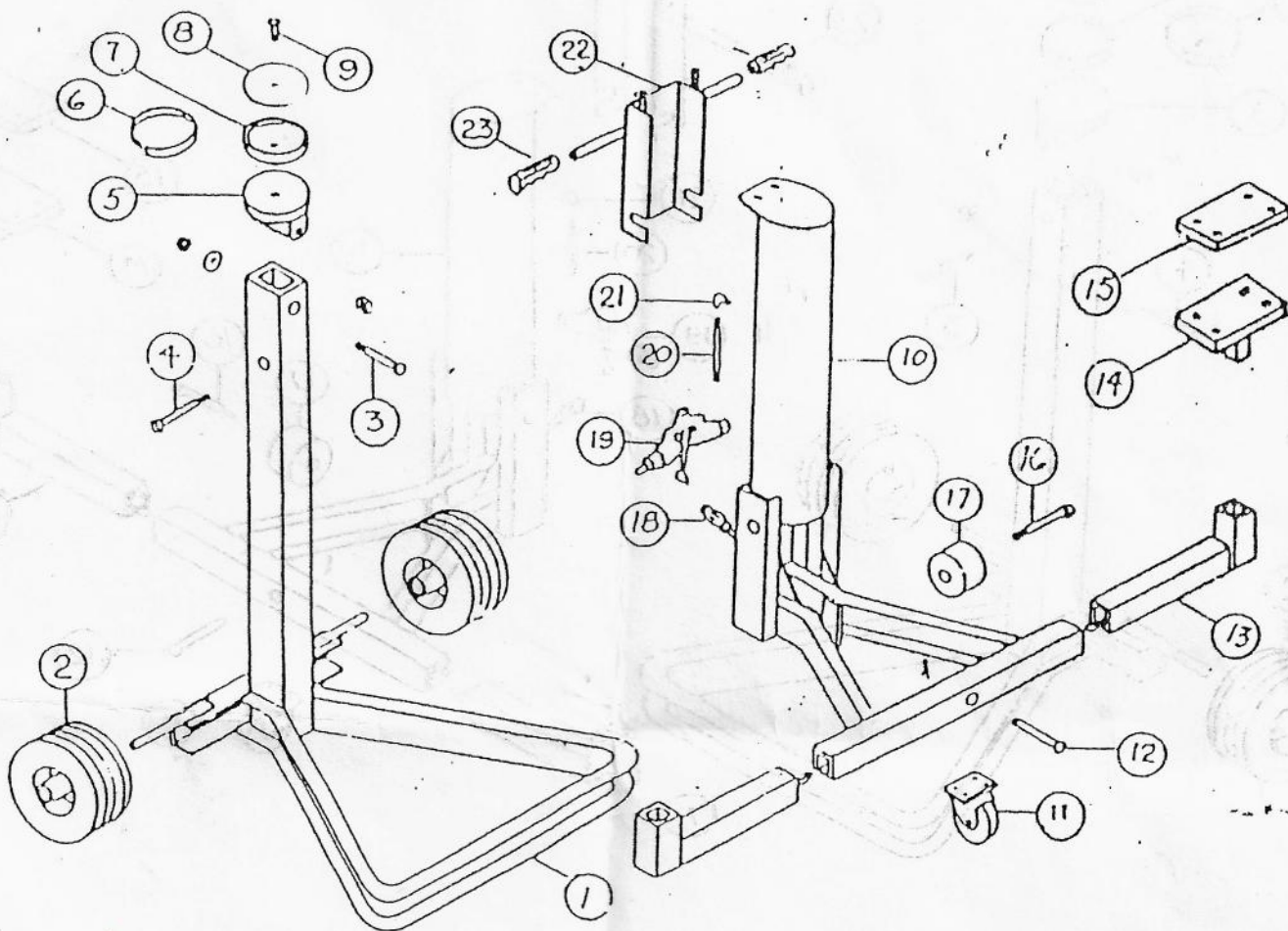
4000 lb @ 130 PSI

3000 lb @ 110 PSI

3 To lower the vehicle, apply air to the jack by actuating the valve to the right, raise the vehicle until the safety latch is free. Push forward on safety latch handle and hold. Now actuate the valve to the left and allow the air to exhaust from the cylinder, and lower the jack. When the jack is in the fully lowered position, release the safety latch handle.

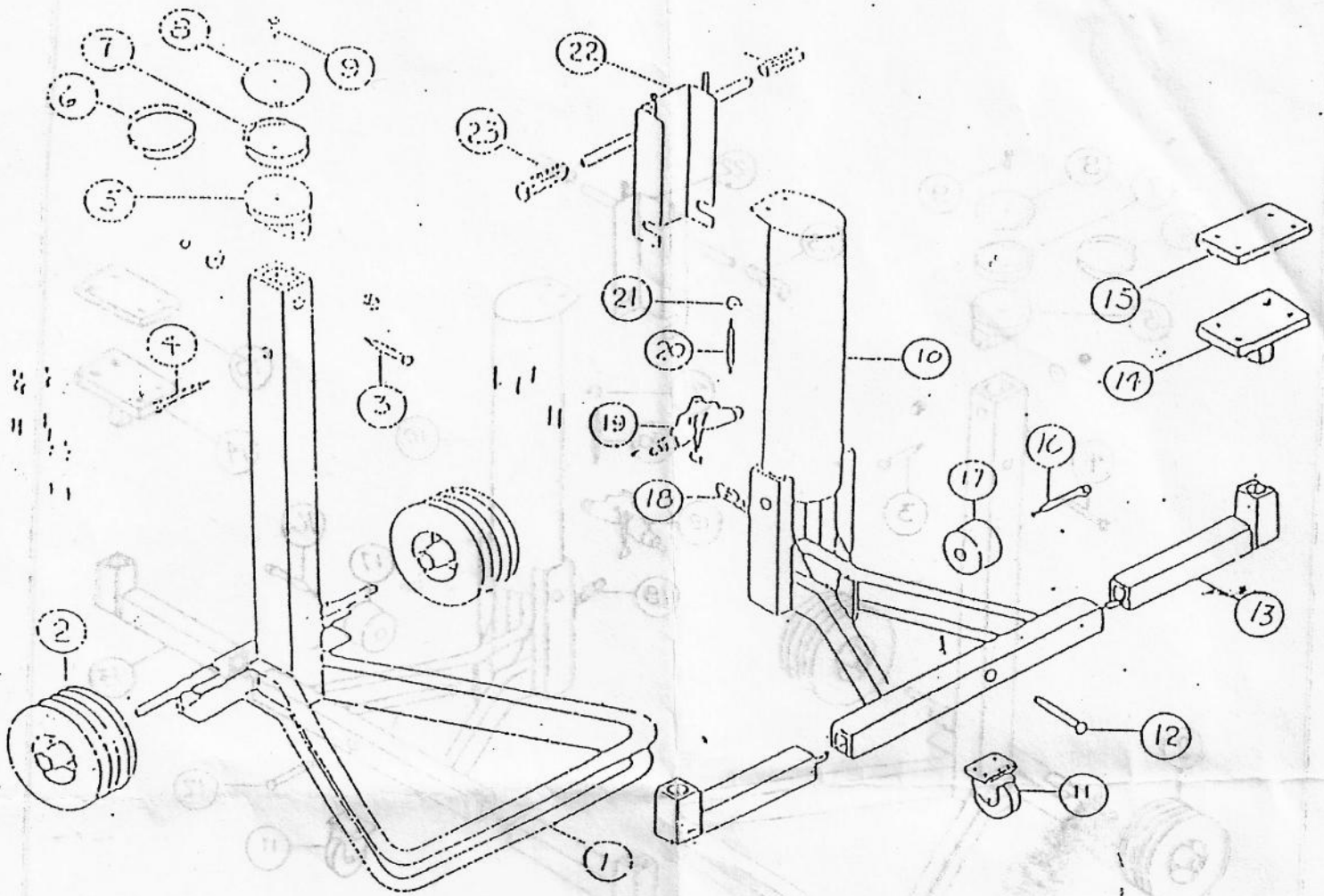
1. ALWAYS USE SAFETY STANDS WHEN WORKING UNDER VEHICLE.
2. NEVER LIFT WITH ANY PART OF JACK OTHER THAN LIFT PADS.

Air Jack



1. Tilt Jack face forward onto floor.
2. Pull base assembly out until stop bolt (4) lines up with hole in top assembly.
3. Remove Bolt
4. Pull base assembly out so that piston bolt can be seen.
5. Remove bolt and piston
6. Remove Bolt #9

7. Clean piston, install new cup seal #7 and wear ring #6
8. Clean inside of top assembly
9. Re-grease cup seal with new grease. Grease side of piston before installing.
10. Re-assemble Jack

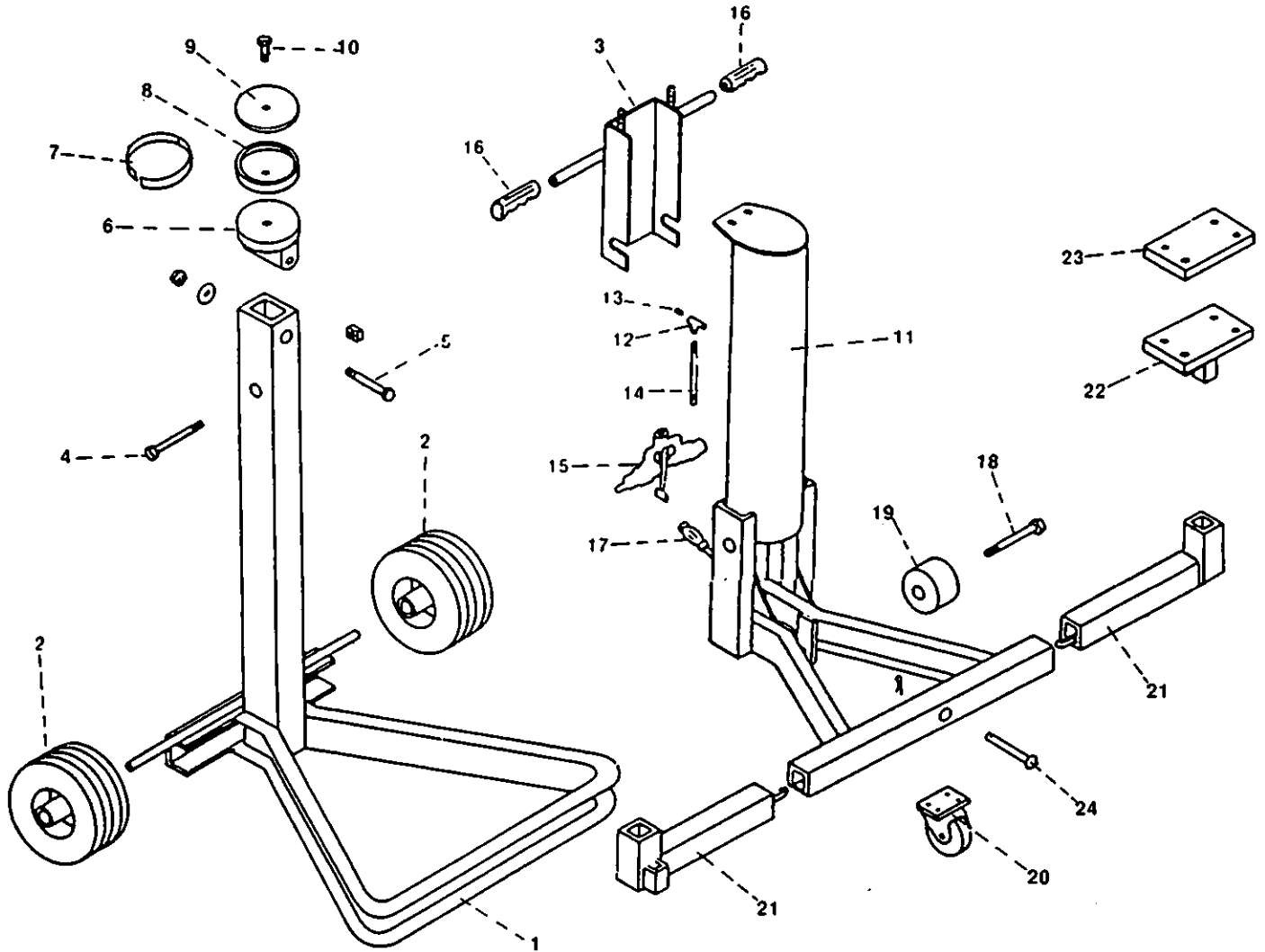


| ITEM # | DESCRIPTION | ITEM # | DESCRIPTION |
|--------|---------------|--------|------------------|
| 1. | Base assembly | 13. | Extension |
| 2. | 8" Wheel | 14. | Lift Pad |
| 3. | Bolt | 15. | Rubber Pad |
| 4. | Stop Bolt | 16. | Bolt |
| 5. | Piston | 17. | Wheel |
| 6. | Wear Ring | 18. | Lock Handle Grip |
| 7. | Cup Seal | 19. | Air Valve |
| 8. | Cup washer | 20. | Nipple |
| 9. | Bolt | 21. | Elbow |
| 10. | Top Assembly | 22. | Valve Cover |
| 11. | Caster | 23. | Rubber Grip |
| 12. | Pin | | |



AL-4000

2-1/2 Ton Capacity Air End Lift



| Item No. | Part No. | No. Req'd | Description |
|----------|------------|-----------|---------------|
| 1 | AL-4000-01 | 1 | Base Assembly |
| 2 | AL-4000-02 | 2 | 8" Wheel |
| 3 | AL-4000-03 | 1 | Valve Cover |
| 4 | AL-4000-04 | 1 | Stop Bolt |
| 5 | AL-4000-05 | 1 | Piston Bolt |
| 6 | AL-4000-06 | 1 | Piston |
| 7 | AL-4000-07 | 1 | Piston Ring |
| 8 | AL-4000-08 | 1 | Cup Packing |
| 9 | AL-4000-09 | 1 | Cup Washer |
| 10 | AL-4000-10 | 1 | Cup Bolt |
| 11 | AL-4000-11 | 1 | Top Assembly |
| 12 | AL-4000-12 | 1 | Street Tee |

| Item No. | Part No. | No. Req'd | Description |
|----------|------------|-----------|-------------|
| 13 | AL-4000-13 | 1 | Plug |
| 14 | AL-4000-14 | 1 | Pipe Nipple |
| 15 | AL-4000-15 | 1 | Air Valve |
| 16 | AL-4000-16 | 2 | Handle Grip |
| 17 | AL-4000-17 | 1 | Latch Grip |
| 18 | AL-4000-18 | 1 | Roller Bolt |
| 19 | AL-4000-19 | 1 | Roller |
| 20 | AL-4000-20 | 1 | Caster |
| 21 | AL-4000-21 | 2 | Lift Arm |
| 22 | AL-4000-22 | 1 | Lift Pad |
| 23 | AL-4000-23 | 1 | Rubber Pad |
| 24 | AL-4000-24 | 1 | Bolt |