

MODEL 6620 - OPERATING MANUAL & PARTS BREAKDOWN

Sunex Model 6620 is an air/hydraulic service jack in which the lift arm is actuated by a mechanism that utilizes a relatively incompressible fluid, such as oil, as the force transmitting means, actuated by a pneumatic power source.

⚠ WARNING



THIS IS A LIFTING DEVICE ONLY. DO NOT MOVE OR DOLLY THE VEHICLE WHILE ON THE JACK. IMMEDIATELY AFTER LIFTING SUPPORT THE VEHICLE WITH APPROPRIATE MEANS.

DO NOT OVERLOAD. OVERLOADING CAN CAUSE DAMAGE TO OR FAILURE OF THE JACK.

LIFT ONLY ON AREAS OF THE VEHICLE AS SPECIFIED BY THE VEHICLE MANUFACTURER.

CENTER LOAD ON SADDLE PRIOR TO LIFTING. OFF-CENTER LOADS MAY CAUSE DAMAGE TO JACK, LOSS OF LOAD, PROPERTY DAMAGE, PERSONAL OR FATAL INJURY.

THIS JACK IS DESIGNED FOR USE ONLY ON HARD LEVEL SURFACES CAPABLE OF SUSTAINING THE LOAD. USE ON OTHER THAN HARD LEVEL SURFACES CAN RESULT IN JACK INSTABILITY AND POSSIBLE LOSS OF LOAD.

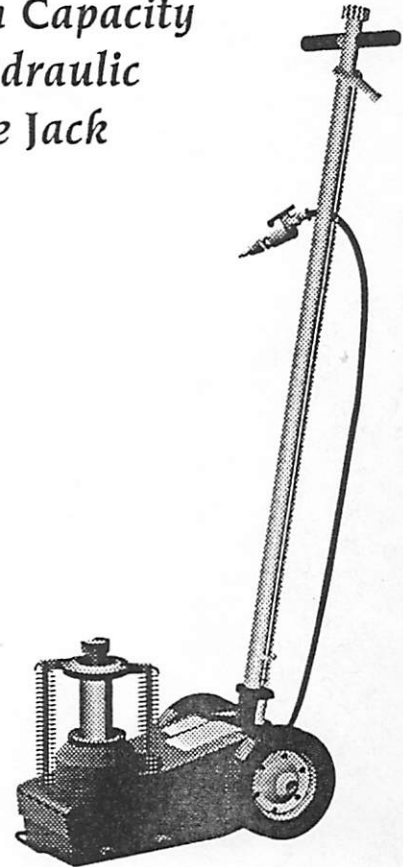
NO ALTERATIONS TO THE JACK SHALL BE MADE.

READ, STUDY AND UNDERSTAND THE OPERATING MANUAL PACKED WITH THIS JACK BEFORE OPERATING.

FAILURE TO HEED THESE WARNINGS MAY RESULT IN LOSS OF LOAD, DAMAGE TO JACK, AND/OR FAILURE RESULTING IN PROPERTY DAMAGE, PERSONAL OR FATAL INJURY.

6620

20 Ton Capacity Air/Hydraulic Service Jack

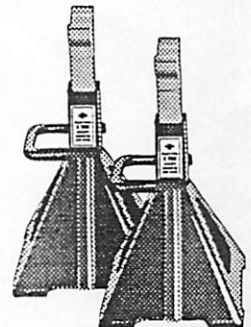


⚠ WARNING

For Your Safety & to Prevent Injury:

ALWAYS
Support Vehicle with
Appropriately Rated
Support Stands!

Use Service Jack
for Lifting
Purposes ONLY!



SUNEX INTERNATIONAL

P.O. Box 4215 • Greenville, SC 29608

FEATURES

- ▶ Chrome Plated Lift Ram
- ▶ Self-Retracting Ram Springs for Fast Ram Retraction
- ▶ Push Valve Lever for Fast Air Control
- ▶ 3 Position Lock Lever
- ▶ Safety Overload Valve
- ▶ Large Diameter Wheels for Ease of Operation

SPECIFICATIONS

Low Height	9"
Raised Height	18"
Lift	4-3/4"
Screw Extension	4-1/4"
Air Pressure	85 - 160 PSI
Chassis Width	13"
Chassis Length	20"
Shipping Wt.	102 Lbs.

ASSEMBLY INSTRUCTIONS

This jack comes pre-assembled except for the handle. Place handle into handle block and tighten screw into handle.

INSPECTION

Visual inspection should be made before each use of the air/hydraulic service jack, checking for leaking hydraulic fluid and damaged, loose or missing parts. Each jack must be inspected by a manufacturer's repair facility immediately, if accidentally subjected to an abnormal load or shock. Any jack which appears to be damaged in any way, is found to be badly worn, or operates abnormally **MUST BE REMOVED FROM SERVICE** until necessary repairs are made by a manufacturer's authorized repair facility. It is recommended that an annual inspection of the jack be made by a manufacturer's authorized repair facility and that any defective parts, decals or warning labels be replaced with manufacturer's specified parts.

A list of authorized repair facilities is available from the manufacturer.

OPERATING INSTRUCTIONS

IMPORTANT: Before attempting to raise a vehicle, check vehicle service manual for recommended lifting surfaces.

1. **To raise load:** Close release valve tightly (by turning handle clockwise) **DO NOT OVERTIGHTEN.** Position jack under load so that saddle will contact load firmly and load is centered so it cannot slip. Operate jack handle until saddle approaches the load. Once again check to see that saddle is correctly positioned. Raise load to desired height. Place jack stands of appropriate capacity under the vehicle. **DO NOT CRAWL UNDER VEHICLE WHILE LIFTING VEHICLE OR PLACING OR REMOVING JACK STANDS!** Place jack stands at vehicle manufacturer's recommended lift areas that provide stable support for the raised vehicle. Slowly turn the jack handle counterclockwise to lower the vehicle onto the jack stands. Lower the vehicle slowly so as not to shock load the jack stands. Once repairs are completed, raise vehicle enough to remove jack stands. Lower vehicle very slowly.
2. **To lower load:** Open Release Valve **VERY SLOWLY** (by turning handle counter-clockwise.) When release valve is opened, saddle and load will be lowered.

CAUTION: Keep hands or feet away from the hinge mechanism of the jack.

OWNER/USER RESPONSIBILITY

The owner and/or user must have an understanding of the manufacturer's operating instructions and warnings before using this service jack. Personnel involved in the use and operation of equipment shall be careful, competent, trained, and qualified in the safe operation of the equipment and its proper use when servicing motor vehicles and their components. Warning information should be emphasized and understood. If the operator is not fluent in English, the manufacturer's instructions and warnings shall be read to and discussed with the operator in the operator's native language by the purchaser/owner, making sure that the operator comprehends its contents.

Owner and/or user must study and maintain for future reference the manufacturer's instructions. Owner and/or user is responsible for keeping all warning labels and instruction manuals legible and intact. Replacement labels and literature are available from the manufacturer.

MAINTENANCE

To Add Oil: With saddle fully lowered and ram depressed, set jack in an upright position and remove oil filler plug. Fill until oil is level with filler plug hole.

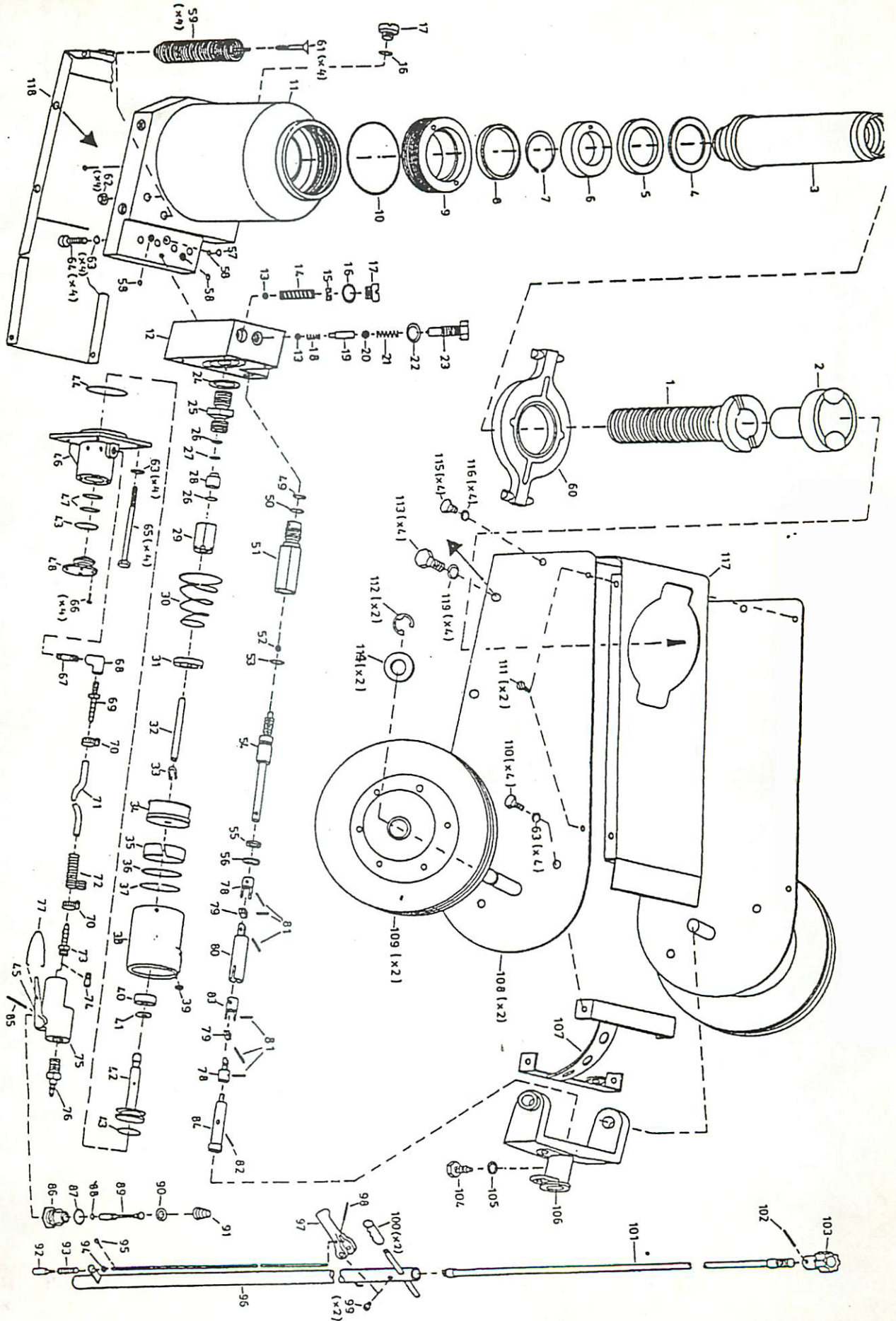
To Change Oil: For best performance and longest life, replace the complete oil supply at least once a year. To drain the oil, remove the filler plug. Lay the jack on its side and allow the oil to run out into suitable drain pan.

The oil will run slowly because air must enter as oil drains out. **Be Careful** to prevent dirt or foreign matter from entering the system. Replace with proper oil. **IMPORTANT!** Use only a good grade hydraulic jack oil. Avoid mixing types of oil. Do not use brake fluid, alcohol, glycerin, detergent motor oil, or dirty oil. Improper fluid can cause serious internal damage to the jack, rendering it inoperative.

TROUBLESHOOTING

PROBLEM	lack will not lift load	lack will not hold load or handle rises	lack will not lift to it's full height	lack will not lower completely	lack will not lift smoothly or jack feels spongy	SOLUTION
✓						The release valve is not closed. Turn the valve clockwise tightly.
✓		✓				Low on oil. Refill the jack to the correct level of oil.
✓						Pump seals and back-up ring is defective. Clean oil passages, replace seals and renew oil.
		✓		✓		The hydraulic system is filled with air. Open the release valve, pump handle rapidly (4) full strokes to purge air, close release valve.
			✓			Return spring is broken or linkages binding. Replace spring if broken. Grease pivot shaft, oil all lift arm linkages.
	✓					Discharge ball is not sealing hydraulic system and oil may be dirty. Manually flush hydraulic system by raising and lowering lift arm by hand. Open the release valve, as required to raise and lower the lift arm. Manually raise and lower lift arm.

MODEL 6620 - OPERATING MANUAL & PARTS BREAKDOWN



MODEL 6620 - OPERATING MANUAL & PARTS BREAKDOWN

ITEM #	DESCRIPTION	QTY.	ITEM #	DESCRIPTION	QTY.
1	Screw Ext.	1	61	Screw (Spring)	1
2	Saddle	1	62	Nut	1
3	Cylinder Rod	1	63	Lock Washer	4
* 4	Teflon Ring	1	64	Hex Screw	1
* 5	Cup Seal	1	65	Air Pump Motor Screw	4
6	Brass Bushing	1	66	End Cap Screw	4
* 7	Snap Ring	1	67	Threaded Pipe Joint	1
* 8	Wiper Seal	1	68	Pipe Joint Elbow	1
9	Spanner Ring	1	69	(Hose) Pipe Joint	1
*10	O-Ring	1	70	Hose Clamp	2
11	Oil Reservoir	1	71	Hose Spring	1
12	Pump Housing	1	72	Hose Spring	1
*13	Steel Ball	2	73	Pipe Joint (Air Valve)	1
14	Overload Spring	1	74	Screen	1
15	Flat Screw	1	75	Trigger, Valve Housing	1
*16	O-Ring	1	76	Air Chuck	1
17	Screw	1	77	Trigger Lock Ring	1
18	Spring	1	78	Universal Joint	2
19	Separator	1	79	Connecting Block	2
*20	Steel Ball	1	80	Universal Joint (Long)	1
21	Spring	1	81	Roll Pin	6
*22	Copper Ring	1	82	Roll Pin	1
23	Screw	1	83	Universal Joint	1
*24	Copper Ring	1	84	Connecting Rod	1
25	Plunger Cylinder	1	85	Trigger Lever Pin	1
*26	O-Ring	1	86	Brass Trigger Valve	1
*27	Leather Packing	1	87	O-Ring	1
28	Brass Bushing	1	88	O-Ring	1
29	Plunger Nut	1	89	Plunger (Trigger)	1
30	Spring	1	90	Cup Washer	1
31	Spring Seat	1	91	Spring Trigger	1
32	Plunger	1	92	Stopper (Rod)	1
33	Clamp Ring	1	93	Spring	1
34	Air Piston	1	94	Washer	1
*35	Teflon Piston Ring	1	95	Cotter Pin	1
*36	O-Ring	1	96	T-Handle	1
*37	Back Up Piston Ring	1	97	Lever (Lock)	1
38	Air Piston, Cylinder	1	98	Roll Pin	1
*39	O-Ring	1	99	Bolt	2
40	Guide Packing	1	100	Handle Grip	2
41	Steel Ring	1	101	Handle Connecting Rod	1
42	Piston Guide	1	102	Roll Pin	1
*43	O-Ring	2	103	Release Knob	1
*44	O-Ring	1	104	Screw (Handle)	1
45	Trigger Lever	1	105	Lock Washer	1
46	Air Pump Case, End	1	106	Handle Fork	1
*47	O-Ring	1	107	Handle Fork Bracket	1
48	End Cap	1	108	Frame (Left)	1
*49	Brass Ring	1	108-1	Frame (Right)	1
*50	O-Ring	1	109	Wheel	2
51	Release Valve Cylinder	1	110	Bolt	4
*52	Steel Ball	1	111	Screw	4
*53	O-Ring	1	112	C-Screw	2
54	Release Valve	1	113	Screw	4
55	Brass Packing	1	114	Flat Washer	2
56	Snap Ring	1	115	Screw	4
*57	Teflon Ring	1	116	Lock Washer	4
*58	O-Ring	3	117	Cover (Upper)	1
59	Return Spring	4	118	Cover (Lower)	1
60	Spring Guide	1	119	Lock Washer	4

* Indicates these items are only available in seal kit. Items 92 thru 103 are only available as the handle assy.