



PARTS BREAKDOWN AND OPERATING MANUAL

MODEL #6604
4 Ton Capacity
Service Jack

OPERATING INSTRUCTIONS:

Close the release valve by rotating the hand knob clockwise. Pump the foot pedal until full weight of load is pressed against saddle. Unlock pump handle by sliding pin to left. To raise the lifting head, turn release knob to the right. To lower lifting head: turn release SLOWLY to left. Speed of lowering varies with the amount release is opened.

ASSEMBLY INSTRUCTIONS:

1. This unit comes pre-assembled, except for the handle.
2. Unscrew bolt and nut from handle block assembly. Hold handle parallel with ground, slide into handle block assembly. Turn release valve knob on top of handle until bolt holes line up. Screw the bolt back in and tighten nut.
3. Check all nuts and bolts for tightness before use.

OWNER/USER RESPONSIBILITY

The owner and/or user must have an understanding of the manufacturer's operating instructions and warnings before using the service jack. Warning information should be emphasized and understood. If the operator is not fluent in English the manufacturer's instructions and warnings shall be read to and discussed with the operator in the operator's native language by the purchaser/owner, making sure that the operator comprehends its contents.

Owner and/or user must study and maintain for future reference the manufacturer's instructions.

INSPECTION:

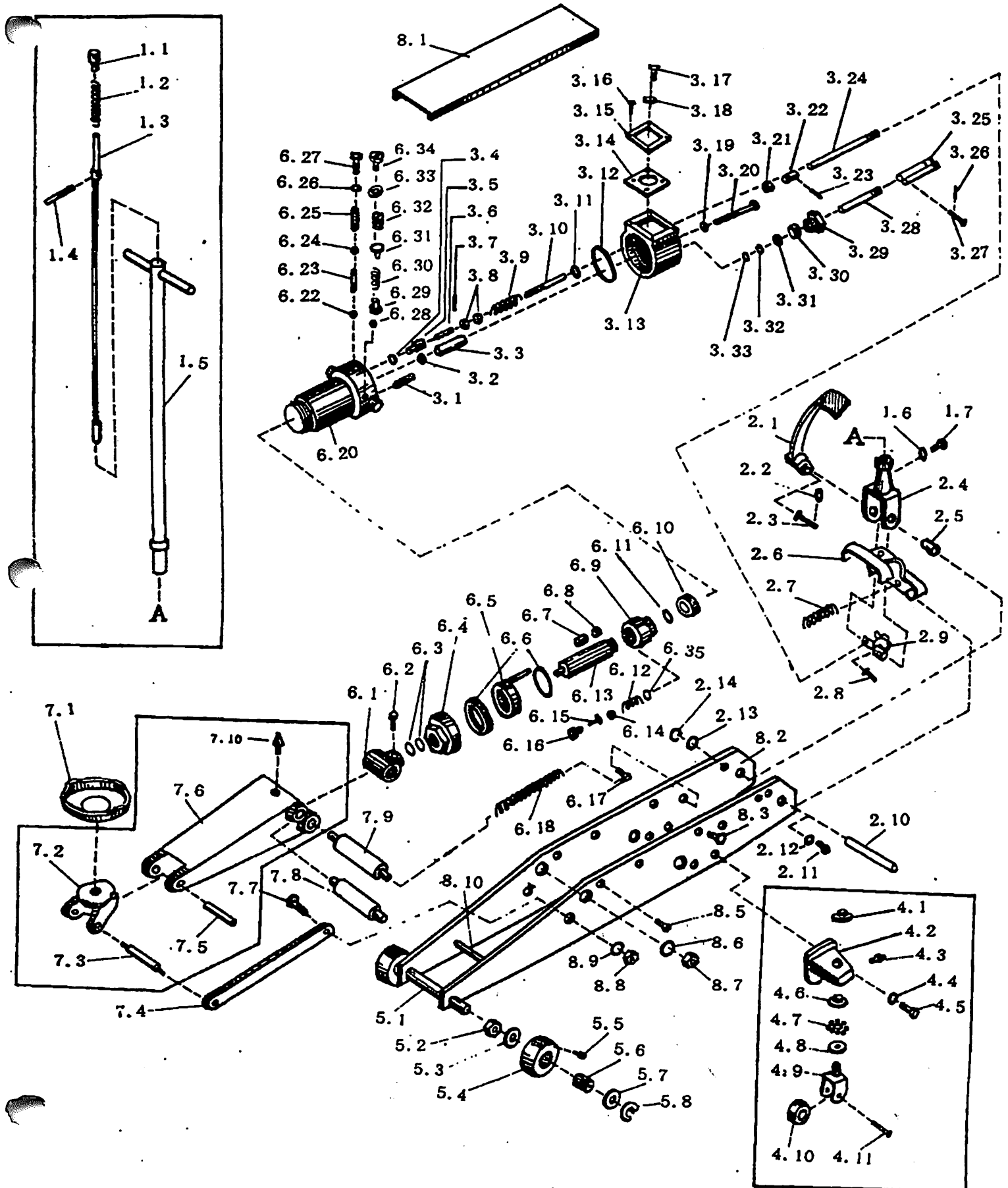
Visual inspection should be made before each use of the service jack, checking for leaking hydraulic fluid and damaged, loose or missing parts. Any service jack which appears to be damaged in any way, is found to be badly worn, or operated abnormally **MUST BE REMOVED FROM SERVICE**. If the service jack is accidentally subjected to an abnormal load or shock it must be inspected by a manufacturer's authorized repair facility immediately. It is recommended that an annual inspection of the service jack be made by a manufacturer's authorized repair facility and that any defective parts, decals, or warning labels be replaced with manufacturer's specified parts. A list of authorized repair facilities is available from the manufacturer.

WARNING

This jack is designed for lifting purposes **ONLY**. The load should be supported immediately by appropriate means. **DO NOT OVERLOAD**. Overloading can cause damage to or failure of the jack. Make sure load is centered on ram. Lift only on areas of the vehicle as specified by the vehicle manufacturer. This jack is designed for use only on hard level surfaces capable of sustaining the load. Use on other than hard, level surfaces can result in jack instability and possible loss of load. Study, understand, and follow the instructions packed with this jack before operating. Failure to heed these warnings may result in loss of load, damage to jack and/or failure resulting in personal injury or property damage. Visual inspection should be made before each use of the jack, checking for leaking hydraulic fluid and damaged, loose or missing parts.

PARTS BREAKDOWN

MODEL #6604
4 Ton Hyd. Service Jack



Item	Part No.	Description
1.1	6605A1.1	End Cover
1.2	6605A1.2	Compression Spring
1.3	6605A1.3	Deflector Rod
1.4	6605A1.4	Screw Rod
1.5	6605A1.5	Control Rod
1.6	6605A1.6	Washer
1.7	6605A1.7	Fastening Screw
2.1	6605A2.1	Foot Pedal
2.2	6605A2.2	Wire
2.3	6605A2.3	Pin
2.4	6605A2.4	Fork Member
2.5	6605A2.5	Bush
2.6	6605A2.6	Base
2.7	6605A2.7	Spring
2.8	6605A2.8	Pin
2.9	6605A2.9	Cap
2.10	6605A2.10	Shaft
2.11	6605A2.11	Screw
2.12	6605A2.12	Washer
2.13	6605A2.13	Washer
2.14	6605A2.14	Clamp Ring
3.1	6605A3.1	Filter
3.2	6605A3.2	Washer
3.3	6605A3.3	Outside Tube
3.4	6605A3.4	Washer
3.5	6605A3.5	Valve Seat
3.6	6605A3.6	Needle
3.7	6605A3.7	Wire
3.8	6605A3.8	Nut
3.9	6605A3.9	Spring
3.10	6605A3.10	Screw Rod
3.11	6605A3.11	Rubber Ring
3.12	6605A3.12	Rubber Ring
3.13	6605A3.13	Cylinder Body
3.14	6605A3.14	Paper Washer
3.15	6605A3.15	Cover Plate
3.16	6605A3.16	Bolt
3.17	6605A3.17	Screw
3.18	6605A3.18	Washer
3.19	6605A3.19	Seal Washer
3.20	6605A3.20	Bolt
3.21	6605A3.21	Nut
3.22	6605A3.22	Connecting Bush
3.23	6605A3.23	Wire
3.24	6605A3.24	Connecting Rod
3.25	6605A3.25	Driving Rod
3.26	6605A3.26	Wire
3.27	6605A3.27	Pin
3.28	6605A3.28	Piston Rod
3.29	6605A3.29	Locking Nut
3.30	6605A3.30	Protect Dust Ring
3.32	6605A3.32	Seal Ring
3.33	6605A3.33	Bush Prevent Ring
4.1	6605A4.1	Cover
4.2	6605A4.2	Wheel Cover
4.3	6605A4.3	Injecting Oil Nozzle
4.4	6605A4.4	Washer
4.5	6605A4.5	Screw
4.6	6605A4.6	Bearing Cover
4.7	6605A4.7	Steel Ball
4.8	6605A4.8	Bearing Holder
4.9	6605A4.9	Wheel Fork
4.10	6605A4.10	Wheel

Item	Part No.	Description
4.11	6605A4.11	Rivet
5.1	6605A5.1	Axle
5.2	6605A5.2	Nut
5.3	6605A5.3	Stop Ring
5.4	6605A5.4	Wheel
5.5	6605A5.5	Pressure Filler Port
5.6	6605A5.6	Roller
5.7	6605A5.7	Stop Ring
5.8	6605A5.8	Split Ring
6.1	6605A6.1	Joint
6.2	6605A6.2	Screw
6.3	6605A6.3	Seal Ring
6.4	6605A6.4	Large Nut
6.5	6605A6.5	Ring
6.6	6605A6.6	Washer
6.7	6605A6.7	Bush
6.8	6605A6.8	Seal Ring
6.9	6605A6.9	Piston
6.10	6605A6.10	Rubber Cup
6.11	6605A6.11	Stop Ring
6.12	6605A6.12	Spring
6.13	6605A6.13	Piston Rod
6.14	6605A6.14	Steel Ball
6.15	6605A6.15	Push Needle
6.16	6605A6.16	Valve Seat
6.17	6605A6.17	Screw
6.18	6605A6.18	Spring
6.20	6605A6.20	Outer Body
6.22	6605A6.22	Steel Ball
6.23	6605A6.23	Small Push Rod
6.24	6605A6.24	Steel Ball
6.25	6605A6.25	Large Ball Rod
6.26	6605A6.26	Washer
6.27	6605A6.27	Bolt
6.28	6605A6.28	Steel Ball
6.29	6605A6.29	Valve Seat
6.30	6605A6.30	Spring
6.31	6605A6.31	Stop Block
6.32	6605A6.32	Screw
6.33	6605A6.33	Seal Ring
6.34	6605A6.34	Screw
7.1	6605A7.1	Tray
7.2	6605A7.2	Joint
7.3	6605A7.3	Axle
7.4	6605A7.4	Level Supporting Rod
7.5	6605A7.5	Axle
7.6	6605A7.6	Rocker
7.7	6605A7.7	Bolt
7.8	6605A7.8	Axle
7.9	6605A7.9	Axle
7.10	6605A7.10	Filter
8.1	6605A8.1	Cover Plate
8.2	6605A8.2	Side Plate
8.3	6605A8.3	Rivet
8.5	6605A8.5	Screw
8.6	6605A8.6	Washer
8.7	6605A8.7	Nut
8.8	6605A8.8	Nut
8.9	6605A8.9	Washer
8.10	6605A8.10	Limiter Axle
3.31	6605A3.31	Stop Ring
6.35	6605A6.35	Washer