



INSPECTION

Visual inspection should be made before each use of the hydraulic press, checking for damaged, loose or missing parts. Each press must be inspected by a manufacturer's repair facility immediately, if subjected to an abnormal load or shock. Any press which appears to be damaged in any way, found to be badly worn, or operates abnormally **MUST BE REMOVED FROM SERVICE** until necessary repairs are made by a manufacturer's authorized repair facility. It is recommended that an annual inspection of the press be made by a manufacturer's authorized repair facility and that any defective parts, decals or warning labels be replaced with manufacturer's specified parts. A list of authorized repair facilities is available from the manufacturer.

FEATURES

Heavy Duty Return Springs for Fast Ram Retraction
Reinforced Head Plate

Hydraulic Power Unit Included
Bed Plates included As Standard Equipment

! WARNING



ALWAYS USE AN ACCURATE PRESSURE GAUGE TO MEASURE PRESSING FORCE.

DO NOT EXCEED THE RATED CAPACITY OF THIS PRESS.

NEVER TAMPER WITH HYDRAULIC SYSTEM PRESSURE SETTINGS. COMPONENTS OF THIS PRESS ARE SPECIALLY DESIGNED TO WITHSTAND RATED CAPACITY LOADS. DO NOT SUBSTITUTE BOLTS OR PINS, OR ANY OF THE COMPONENTS. USE ONLY GENUINE FACTORY REPLACEMENT PARTS.



ALWAYS CENTER LOAD ON RAM PLUNGER. OFFSET LOADS CAN DAMAGE RAM AND MAY CAUSE LOAD TO EJECT.

VISUAL INSPECTION SHOULD BE MADE BEFORE EACH USE OF THE PRESS, CHECKING FOR SIGNS OF CRACKED WELDS, BENT BED PINS, LOOSE OR MISSING BOLTS, OR ANY OTHER STRUCTURAL DAMAGE.

REMOVE ALL LOADS FROM PRESS BED BEFORE ATTEMPTING TO

ADJUST BED HEIGHT. BEWARE OF POSSIBLE FALLING BED.

PRESS ONLY ON LOADS SUPPORTED BY PRESS BED. DO NOT SUPPORT LOADS ON FLOOR OR PRESS FRAME.

WHEN USING ANY ACCESSORIES SUCH AS ARBOR PLATES, BE CERTAIN THEY ARE CENTERED ON PRESS BED, AND ARE IN FULL CONTACT WITH BED.

PARTS BEING PRESSED MAY SPLINTER, SHATTER, OR BE EJECTED FROM THE PRESS. DUE TO VARIED APPLICATIONS, IT IS YOUR RESPONSIBILITY TO ALWAYS USE ADEQUATE GUARDS, WEAR EYE PROTECTION AND HEAVY PROTECTIVE CLOTHING WHEN OPERATING THE PRESS.

KEEP HANDS AND FINGERS OUT OF THE PRESS AND AWAY FROM PARTS THAT MAY SHIFT AND PINCH. DO NOT STAND IN FRONT OF WORK AREA WHERE LOAD IS APPLIED.

BEFORE APPLYING LOAD, BE CERTAIN ALL PRESS BED SUPPORTING PINS ARE FULLY ENGAGED.

ALWAYS USE A BEARING SHIELD WHEN PRESSING BEARINGS. UTILIZE CAUTION SETTING WORK UP TO BE PRESSED TO INSURE THAT THE ITEM THAT IS TO BE PRESSED OR ANY PART THEREOF CANNOT BE DISLODGED OR BROKEN DURING PRESS WORK. THIS MAY RESULT IN THE PART FLYING OUT OF THE WORK AREA AT A DANGEROUS RATE OF SPEED.

NO ALTERATIONS TO THE PRESS SHALL BE MADE.

READ, STUDY AND UNDERSTAND ALL INSTRUCTION MANUALS PACKED WITH THIS PRESS BEFORE OPERATING.

FAILURE TO HEED THESE WARNINGS MAY RESULT IN LOSS OF LOAD, DAMAGE TO THE PRESS AND/OR FAILURE RESULTING IN PROPERTY DAMAGE, PERSONAL OR FATAL INJURY.

SPECIFICATIONS

Capacity.....	12 Tons
Height	36-3/4"
Base Width	19-1/2"
Stroke.....	.6"
Shipping Wt.....	93 Lbs.

5212BP
12 TON CAPACITY
TABLE TOP
HYDRAULIC JACK

OWNER/USER RESPONSIBILITY

The owner and/or user must have a thorough understanding of the manufacturer's operating instructions and warnings before using this hydraulic press. Personnel involved in the use and operation of equipment shall be careful, competent, trained, and qualified in the safe operation of the equipment and its proper use when servicing motor vehicles and their components. Warning information should be emphasized and understood. If the operator is not fluent in English, the manufacturer's instructions and warnings shall be read to and discussed with the operator in the operator's native language by the purchaser/owner, making sure that the operator comprehends its contents. Owner and/or user must study and maintain for future reference the manufacturer's instructions. Owner and/or user is responsible for keeping all warning labels and instruction manuals legible and intact. Replacement labels and literature are available from the manufacturer.

ASSEMBLY

Prior to assembly, check for any visible damage to parts and report any damage to the local distributor. Replace damaged components before operating the press. Check all parts and hardware against parts list to ensure all components are present. During assembly refer to the diagram as well as parts list.

1. Attach press feet (#2) to right and left hand legs (#1) using four 3/8" bolts (#17) and four 3/8" hex nuts (#18) with lockwashers (#19). Hand tighten bolts at this time.
2. Attach both leg braces (#6) to the legs using four 5/16" bolts (#14) and 5/16" hex nuts (#15) with lock washers (#16).
3. Drop head weldment (#5) from top between legs and secure with four 3/8" bolts (#17) and four 3/8" hex nuts (#18) with lockwashers (#19) per side.
4. Square up assembly making sure that the legs are not leaning in any direction and tighten all bolts securely.
5. Insert one press pin (#12) each into lowest hole position of left and right legs.
6. Drop press bed (#3) onto pins and insert the other two pins through hole in legs and press bed.
7. Attach springs (#10) to head weldment and attach eyebolts (#11) to carriage (#4) using two 3/8" hex nuts (#18).
8. Insert pushing adapter (#13) into underside of press carriage and secure with bolt.
9. Place hydraulic unit on press carriage (#4) and position so that when the ram is extended, it will seat in the inside corner of the ram position bracket.
10. Place press plates (#7) on press bed.
11. Check all bolts for tightness and hydraulic unit for any leaks. **NOTE: Always use a bearing shield when pressing bearings.** If press rocks and is not level, loosen feet slightly to compensate.

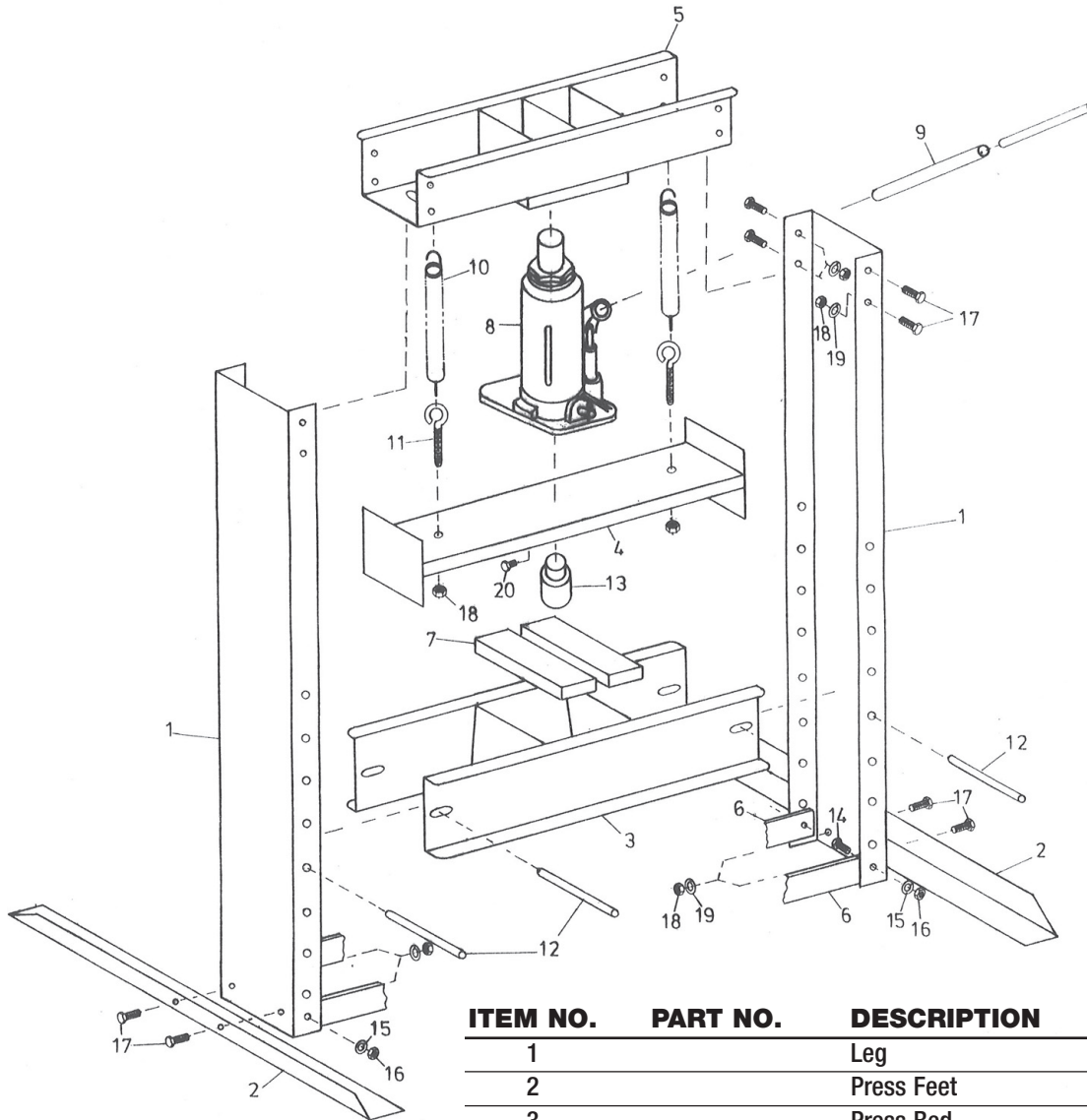
OPERATION

1. Bed Frame - the press bed (#3) is adjustable up and down to fully take advantage of available ram travel and numerous work pieces.
2. Fully retract ram and remove all items from press bed frame.
3. Support press bed, and remove (4) press bed pins (#12)
4. Raise or lower press bed to desired height, and reinstall press bed pins. Be certain pins are fully engaged in parallel flanges of the upright columns.

MAINTENANCE

Maintain proper hydraulic fluid level in bottle jack.

5212BP PARTS BREAKDOWN & PARTS LIST



ITEM NO.	PART NO.	DESCRIPTION	QTY.
1		Leg	2
2		Press Feet	2
3		Press Bed	1
4		Carriage	1
5		Head Weldment	1
6		Leg Brace	2
7	RS5212B07	Press Plate	2
8	4912A	Hyd. Unit	1
10	RS5212B10	Spring	2
11	*	Eye Bolt	2
12		Press Pins	4
13	RS310012	Pushing Adapter	1
14	*	5/16" - 18 x 1" Bolt	4
15	*	5/16" Hex Nut	5
16	*	Lockwasher	4
17	*	3/8" - 16 x 1"	12
18	*	3/8" Hex Nut	12
19	*	Lockwasher	12
20	*	5/16" - 18 x 3/4"	1

* AVAILABLE IN BOLT KIT RS5212BBK

Optional: RSB51 Bearing Shield

LIMITED WARRANTY...

SUNEX INTERNATIONAL, INC. WARRANTS TO ITS CUSTOMERS THAT THE COMPANY'S SUNEX TOOLS[®] BRANDED PRODUCTS ARE FREE FROM DEFECTS IN WORKMANSHIP AND MATERIALS.

Sunex International, Inc. will repair or replace its Sunex Tools[®] branded products which fail to give satisfactory service due to defective workmanship or materials, based upon the terms and conditions of the following described warranty plans attributed to that specific product. This product carries a 1 year warranty. During this warranty period, Sunex Tools will repair or replace at our option any part or unit which proves to be defective in material or workmanship.

Other important warranty information...

This warranty does not cover damage to equipment or tools arising from alteration, abuse, misuse, damage and does not cover any repairs or replacement made by anyone other than Sunex Tools or its authorized warranty service centers. The foregoing obligation is Sunex Tools' sole liability under this or any implied warranty and under no circumstances shall we be liable for any incidental or consequential damages.

Note: Some states do not allow the exclusion or limitation of incidental or consequential damages, so the above limitation or exclusion may not apply to you. Please contact your local Sunex distributor for proper warranty handling procedures.

If you have any questions about warranty service, please write to Sunex Tools. This warranty gives you specific legal rights and you may also have other rights which vary from state to state. Repair kits and replacement parts are available for many of Sunex Tools products regardless of whether or not the product is still covered by a warranty plan.

Shipping Address: Sunex Tools • 315 Hawkins Rd. • Travelers Rest, SC 29690

Mailing Address: Sunex Tools • P.O. Box 4215 • Greenville, SC 29608