



4400-Lb. Capacity Pallet Jack

OWNER'S MANUAL



⚠ WARNING:
Read carefully and understand all ASSEMBLY AND OPERATION INSTRUCTIONS before operating. Failure to follow the safety rules and other basic safety precautions may result in serious personal injury.

Item# 55833



4400-Lb. Capacity Pallet Jack

OWNER'S MANUAL

Thank you very much for choosing a Strongway™ product. For future reference, please complete the owner's record below:

Serial Number/Lot Date Code: _____ Purchase Date: _____

Save the receipt, warranty and these instructions. It is important that you read the entire manual to become familiar with this product before you begin using it.

This pallet jack is designed for certain applications only. Northern Tool and Equipment is not responsible for issues arising from modification or improper use of this product such as an application for which it was not designed. We strongly recommend that this product not be modified and/or used for any application other than that for which it was designed.

Table of Contents

Intended Use.....	1
Packaging Contents.....	1
Technical Specifications.....	1
Important Safety Information.....	1
Specific Operation Warnings.....	2
Assembly Instructions.....	3
Operating Instructions.....	4
Maintenance.....	5
Troubleshooting.....	5
Parts Diagram.....	6
Parts List	8
Replacement Parts.....	9
Limited Warranty.....	10

Intended Use

The Strongway 4400 Lb. Capacity Pallet Jack is designed for transportation of loads with a level, attached base and may be used only on a firm and even surface, such as concrete or asphalt. The load must be evenly distributed pallets, with the ideal loading mode such that the center of gravity of the load is at the central position of the fork.

Packaging Contents

Part A (1)	Part B (1)
Frame Assembly (1)	Handle (1)

Technical Specifications

Property	Specification
Capacity	4400 lb. (2000 kg)
Max Load	48 in. (1220 mm)
Width	27 in. (685 mm)
Lift Range	3 – 7-1/2 in. (75-190 mm)

Important Safety Information

⚠ WARNING:

- Read and understand all instructions. Failure to follow all instructions may result in serious injury or property damage.
- The warnings, cautions, and instructions in this manual cannot cover all possible conditions or situations that could occur. Exercise common sense and caution when using this pallet jack. Always be aware of the environment and ensure that the tool is used in a safe and responsible manner.

- Do not allow persons to operate or assemble the product until they have read this manual and have developed a thorough understanding of how it works.
- Do not modify this pallet jack in any way. Unauthorized modification may impair the function and/or safety and could affect the life of the product. There are specific applications for which the product was designed.
- Use the right tool for the job. DO NOT attempt to force small equipment to do the work of larger industrial equipment. There are certain applications for which this equipment was designed. This product will be safer and do a better job at the capacity for which it was intended. DO NOT use this equipment for a purpose for which it was not intended.
- Industrial or commercial applications must follow OSHA requirements.

⚠ WARNING:
WORK AREA SAFETY

- Inspect the work area before each use. Keep work area clean, dry, free of clutter, and well-lit. Cluttered, wet, or dark work areas can result in injury. Using the product in confined work areas may put you dangerously close to cutting tools and rotating parts.
- Do not allow the product to come into contact with an electrical source. The tool is not insulated and contact will cause electrical shock.
- Keep children and bystanders away from the work area while operating the tool. Do not allow children to handle the product.

PERSONAL SAFETY

- Stay alert, watch what you are doing, and use common sense when operating the tool. Do not use the tool while you are tired or under the influence of drugs, alcohol, or medication. A moment of inattention while operating the tool may result in serious personal injury.
- Dress properly. Do not wear loose clothing, dangling objects, or jewelry. Keep your hair, clothing and gloves away from moving parts. Loose clothes, jewelry, or long hair can be caught in moving parts. Air vents on the tool often cover moving parts and should be avoided.
- Wear the proper personal protective equipment when necessary. Use ANSI Z87.1 compliant safety goggles (not safety glasses) with side shields, or when needed, a face shield. Use a dust mask in dusty work conditions. Also use non-skid safety shoes, hardhat, gloves, dust collection systems, and hearing protection when appropriate. This applies to all persons in the work area.

⚠ CAUTION:
PALLET JACK USE AND CARE

- Do not force the pallet jack. Products are safer and do a better job when used in the manner for which they are designed. Plan your work, and use the correct product for the job.
- Check for damaged parts before each use. Carefully check that the product will operate properly and perform its intended function. Replace damaged or worn parts immediately. Never operate the product with a damaged part.
- Store the pallet jack when it is not in use. Store it in a dry, secure place out of the reach of children. Inspect the tool for good working condition prior to storage and before re-use.
- Keep guards in place and in working order. Never operate the product without the guards in place.

Specific Operation Warnings

⚠ WARNING:

- Do not exceed the rated load capacity.
- Be sure the load is secure and stable before moving.
- Do not operate a loaded pallet jack on ramps or inclines.
- Keep the load centered on the pallet jack.

- Wear steel-toed boots while operating the pallet jack.
- Check for damaged parts before operating. Do not operate a damaged or faulty pallet jack. Do not attempt repairs unless you are trained or authorized to do so.
- Operate a pallet jack from a designated operating position. Keep hands, feet, and other body parts clear from the lifting mechanism and under the forks of the pallet jack.
- Do not use the pallet jack to transport people or animals.
- Be sure the load is stable and secure before moving.
- Be sure to evenly distribute the load before moving.
- Be sure the length of the forks match the length of the pallet.
- Lower the forks to the lowest height when the pallet jack is not in use.
- For use on a hard, level surface. Do not use on a grade or angled surface.
- Do not use if the operator is not physically capable of safely operating with a full load.
- When lifting a pallet jack, the hydraulics may retract the wheels into the frame of the forks, crushing fingers, feet, and other body parts.
- Do not place your hands on the side of the pallet jack while lifting. Always use the end of the forks for lifting.

Assembly Instructions

⚠ WARNING:

Attaching the Handle to the Pump Unit

1. Remove 3 bolts (107N) from the handle brackets (D138N).
2. Set the handle (110N) on the bracket (D138N). Make sure the chain (102N) and the bolt (103N) go through both the holes in the center of the bracket (D138N) and the shaft (D143N). See Fig. 1.

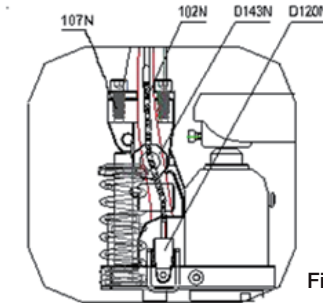


Fig. 1

3. Insert the 3 bolts (107N) through the handle into the bracket (D138N) and tighten securely.
4. Raise the lever plate (D120N) and insert the bolt (103N) into the front slot keeping the nut (104N) on the underside of the lever plate (D120N). See Fig. 2.

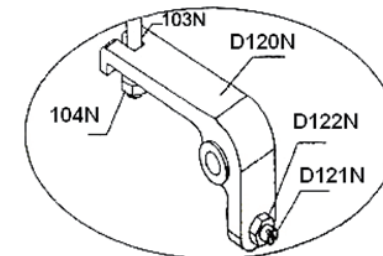


Fig. 2

Operating Instructions

WARNING:

- To avoid serious bodily injury or death, and/or property damage, do not exceed the rated load capacity.
- When not in use, do not allow heavy loads to remain on the fork for an extended period of time. Always lower the fork completely when not in use.

Adjusting the Control Handle – 3 Positions

On the drawbar of this pallet jack, you can find the control handle (117N) which allows for three positions (Fig. 3):

- LOWER** - To lower the load, pull up on the control lever.
NEUTRAL - Place the control lever in this position while pulling the pallet jack or load.
LIFT - To raise the load, push down on the control lever and pump the handle to raise the load.

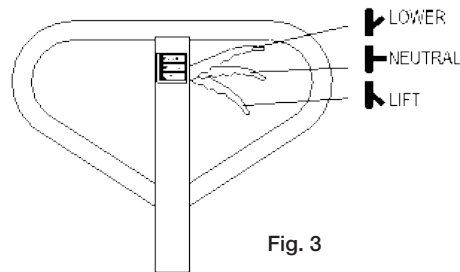


Fig. 3

Note: These three positions have been set at the factory to work as soon as the handle is attached. However, if the forks do not raise or lower as expected, adjust the control positions using the following instructions:

1. The adjusting screw (D121N) (Fig.2) is designed to adjust the 3 control positions. Use a wrench and a slotted screw driver to loosen the nut and turn the adjusting screw clockwise, or counter-clockwise, in order to leave 4-5 threads out after the nut is secured on the lever plate (D120N). Check to see if the pallet jack works correctly in the 3 control positions. If more adjustments are necessary, proceed to the following steps.
2. Place the control handle in the NEUTRAL position. If the fork frame does not rise when you pump the pallet jack, skip to step 5. If the fork frame does rise when you pump the pallet jack, turn the adjusting screw **CLOCKWISE** until the fork frame does not rise.
3. Keep the control handle in the NEUTRAL position. If the fork frame does not move when the handle is pumped, skip to step 4 without any adjustment. If the fork frame lowers, turn the adjusting screw **COUNTER-CLOCKWISE** until the fork frame does not lower.
4. Pull the control handle upward to the LOWER position. If the fork frame lowers, skip to step 5 without any adjustment. If the fork frame does not lower, turn the adjusting screw **CLOCKWISE** again until the fork frame lowers.
5. Push the control handle down to the LIFT position. If the fork frame (D214N) elevates when you pump the pallet jack, go back to check steps 1 to 3 until the pallet jack can work well in all 3 control positions. If the fork frame does not elevate, turn the adjusting screw **COUNTER-CLOCKWISE** again until the fork frame elevates. Repeat steps 1 thru 3 until the pallet jack works in all 3 control positions.

Maintenance

Maintain the product by adopting a program of conscientious repair and maintenance in accordance with the following recommended procedures. It is recommended that the general condition of any tool be examined before it is used. Keep your tool in good repair. Keep handles dry, clean, and free from oil and grease. The following chart is based on a normal operation schedule.

Maintenance Interval	Maintenance Point
Daily before operating	<p>Daily inspection and maintenance of the pallet jack is required, especially for the wheels and the axles. Remove thread or rags on the wheel or axle if any are detected. Unload and lower the forks to the lowest position after every job is finished.</p> <p>Use motor oil or grease to lubricate all movable parts.</p> <p>Remove the air by moving the control handle to the LOWER position, then pump the handle up and down several times. Repeat this process until the forks lift as intended.</p>
After every 6 months operating	<p>Check the oil level every six months. The oil can be hydraulic oil, motor oil, or break oil.</p> <p>The pump capacity is about 14.37 oz. (0.425 liters). When changing or adding oil, fill the tank through the oil plug hole with 7.78 oz. (0.23L) of new hydraulic jack oil.</p>

Troubleshooting

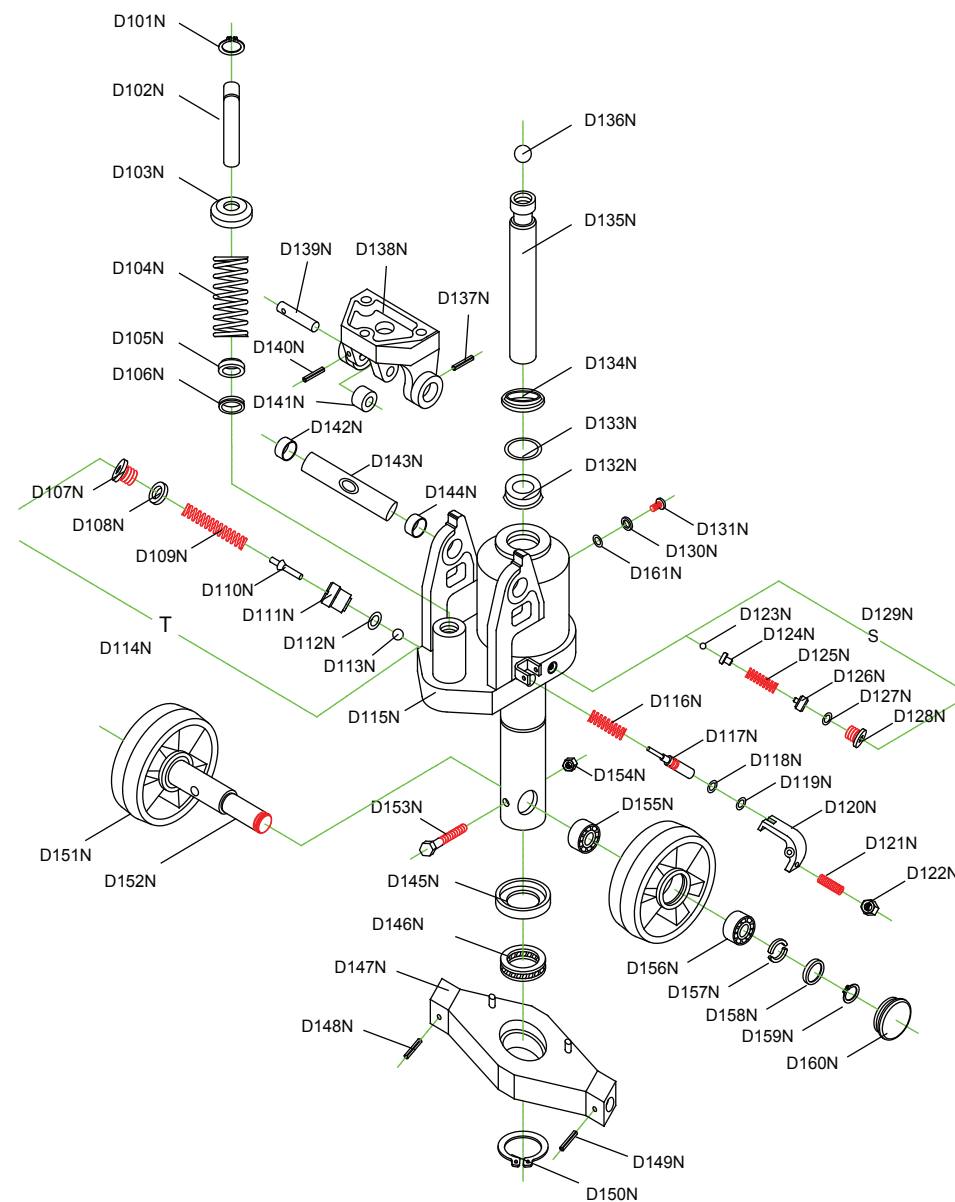
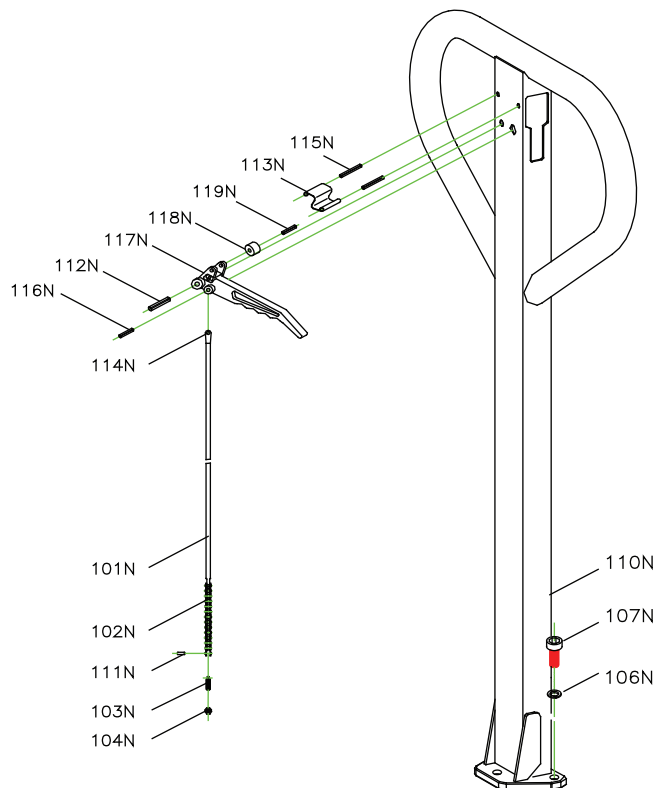
WARNING:

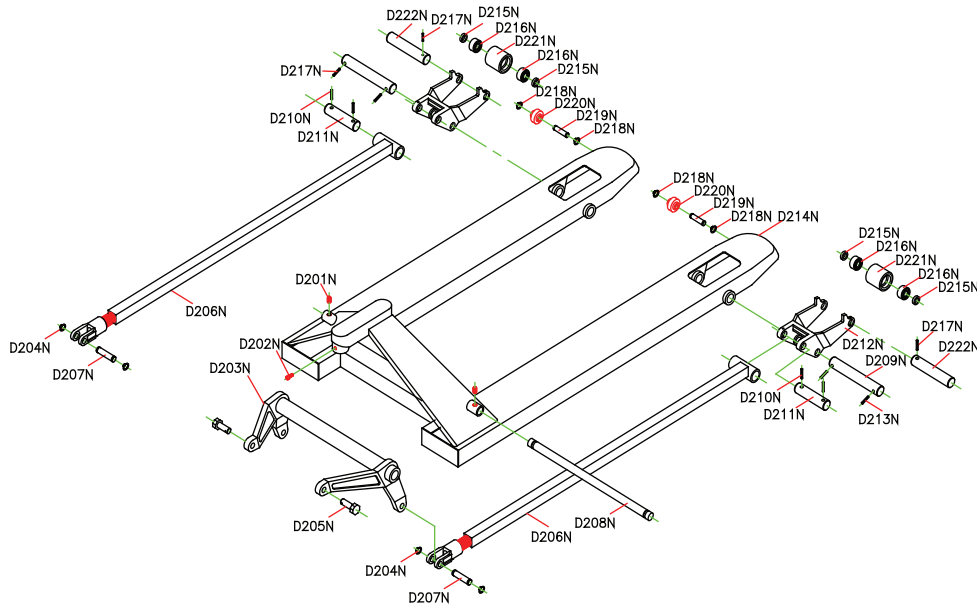
Do not attempt to repair the pallet jack unless you are trained and authorized to do so.

Failure	Possible Cause	Corrective Action
The forks cannot be raised up to the maximum height.	There is not enough hydraulic oil in the pump.	Add more oil.
The forks cannot be raised.	Missing hydraulic oil.	Fill with oil.
	The oil has impurities.	Change the oil.
The forks cannot be lowered.	Air has been introduced into the hydraulic oil.	Bleed the air.
	The piston rod (D135N) or pump body is deformed, resulting from a partial load slanting to one side or overloading.	Replace the piston rod (D135N) or pump body.
	The fork was kept in the high position for a long time with the piston rod exposed, causing rusting and jamming of the rod.	Keep the fork in the lowest position when not in use. Ensure the rod is properly lubricated.
	The adjusting screw (D121N) is not in the correct position.	Adjust the screw (D121N). See page 9 for adjusting the control handle.

Failure	Possible Cause	Corrective Action
The unit leaks.	Sealing parts are worn or damaged.	Replace.
	Some parts of the hydraulic system are cracked or bored.	Replace.
Forks descend without the release valve engaged.	The impurities in the oil cause the release valve to be unable to close tightly.	Replace with new oil.
	Some parts of the hydraulic system are cracked or bored.	Inspect and replace parts as needed.
	Air comes into the oil.	Remove the air.
	Sealing parts worn or damaged.	Replace.
	The adjusting screw (D121N) is not in the correct position.	Adjust the screw (D121N). See page 9 for adjusting the control handle.

Parts Diagram





Parts List

Reference	Part No.	Description	Q'ty	Reference	Part No.	Description	Q'ty
1	101N	Pull Rod	1	20	D104N	Spring	1
2	102N	Chain	1	21	D105N	Dust Ring	1
3	103N	Adjusting Screw	1	22	D106N	Seal Washer	1
4	104N	Nut	1	23	D107N	Screw	1
5	106N	Single Coil Spring Lock Washer	3	24	D108N	Washer	1
6	107N	Bolt	3	25	D109N	Spring	1
7	110N	Handle	1	26	D110N	Valve Plug	1
8	111N	Pin	1	27	D111N	Seat of Valve	1
9	112N	Elastic Pin	1	28	D112N	O-ring	1
10	113N	Blade Spring	1	29	D113N	Steel Ball	1
11	114N	Joining	1	30	D114N	Single Valve Assembly (D107N-D113N)	1
12	115N	Elastic Pin	1	31	D115N	Body of Valve	1
13	116N	Elastic Pin	1	32	D116N	Spring	1
14	117N	Control Handle	1	33	D117N	Strike Pin	1
15	118N	Roller	1	34	D118N	O-ring	1
16	119N	Elastic Pin	1	35	D119N	O-ring	1
17	D101N	C-ring	1	36	D120N	Lever Plat	1
18	D102N	Pump Piston	1	37	D121N	Adjusting Screw	1
19	D103N	Cap of Piston	1	38	D122N	Nut	1

Reference	Part No.	Description	Q'ty	Reference	Part No.	Description	Q'ty
39	D123N	Steel Ball	1	70	D154N	Nut	1
40	D124N	Steel Ball Support	1	71	D155N	Bearing	2
41	D125N	Spring	1	72	D156N	Bearing	2
42	D126N	Adjusting Bolt	1	73	D157N	Washer	2
43	D127N	Washer	1	74	D158N	Washer	2
44	D128N	Screw	1	75	D159N	C-ring	2
45	D129N	Spill Valve Assembly (D123N-D128N)	1	76	D160N	Dust Cover	2
46	D130N	Seal Washer	1	77	D161N	O-ring	1
47	D131N	Screw	1	78	D201N	Plug Screw	2
48	D132N	Seal Washer	1	79	D202N	Screw	1
49	D133N	O-ring	1	80	D203N	Rook-arm	1
50	D134N	Dust Ring	1	81	D204N	C-ring	2
51	D135N	Piston Rod	1	82	D205N	Short Shaft	2
52	D136N	Steel Ball	1	83	D206N	Straight Tappet	2
53	D137N	Elastic Pin	1	84	D207N	Pin	2
54	D138N	Bracket	1	85	D208N	Long Shaft	1
55	D139N	Shaft	1	86	D209N	Shaft	2
56	D140N	Elastic Pin	1	87	D210N	Elastic Pin	2
57	D141N	Pressure Roller	1	88	D211N	Shaft	2
58	D142N	Bushing	1	89	D212N	Frame of Fork Wheel	2
59	D143N	Shaft	1	90	D213N	Elastic Pin	2
60	D144N	Bushing	1	91	D214N	Fork Frame	1
61	D145N	Washer	1	92	D215N	Washer	4
62	D146N	Bearing	1	93	D216N	Bearing	4
63	D147N	Thrust Plate	1	94	D217N	Elastic Pin	2
64	D148N	Elastic Pin	1	95	D218N	C-ring	4
65	D149N	Elastic Pin	1	96	D219N	Pin	2
66	D150N	C-ring	1	97	D220N	Guide Wheel	2
67	D151N	Wheel	1	98	D221N	Fork Wheel	2
68	D152N	Shaft	1	99	D222N	Shaft	2
69	D153N	Screw	1				

Replacement Parts

- For replacement parts and technical questions, please call Customer Service at 1-800-222-5381.
- Not all product components are available for replacement. The illustrations provided are a convenient reference to the location and position of parts in the assembly sequence.
- When ordering parts, the following information will be required: item description, item model number, item serial number/item lot date code, and the replacement part reference number.
- The distributor reserves the rights to make design changes and or improvements to product lines and manuals without notice.



Limited Warranty

Northern Tool and Equipment Company, Inc. ("We" or "Us") warrants to the original purchaser only ("You" or "Your") that the Strongway product purchased will be free from material defects in both materials and workmanship, normal wear and tear excepted, for a period of one year from date of purchase. The foregoing warranty is valid only if the installation and use of the product is strictly in accordance with product instructions. There are no other warranties, express or implied, including the warranty of merchantability or fitness for a particular purpose. If the product does not comply with this limited warranty, Your sole and exclusive remedy is that We will, at our sole option and within a commercially reasonable time, either replace the product or product component without charge to You or refund the purchase price (less shipping). This limited warranty is not transferable.

Limitations on the Warranty

This limited warranty does not cover: (a) normal wear and tear; (b) damage through abuse, neglect, misuse, or as a result of any accident or in any other manner; (c) damage from misapplication, overloading, or improper installation; (d) improper maintenance and repair; and (e) product alteration in any manner by anyone other than Us, with the sole exception of alterations made pursuant to product instructions and in a workmanlike manner.

Obligations of Purchaser

You must retain Your product purchase receipt to verify date of purchase and that You are the original purchaser. To make a warranty claim, contact Us at 1-800-222-5381, identify the product by make and model number, and follow the claim instructions that will be provided. The product and the purchase receipt must be provided to Us in order to process Your warranty claim. Any returned product that is replaced or refunded by Us becomes our property. You will be responsible for return shipping costs or costs related to Your return visit to a retail store.

Remedy Limits

Product replacement or a refund of the purchase price is Your sole remedy under this limited warranty or any other warranty related to the product. We shall not be liable for: service or labor charges or damage to Your property incurred in removing or replacing the product; any damages, including, without limitation, damages to tangible personal property or personal injury, related to Your improper use, installation, or maintenance of the product or product component; or any indirect, incidental or consequential damages of any kind for any reason.

Assumption of Risk

You acknowledge and agree that any use of the product for any purpose other than the specified use(s) stated in the product instructions is at Your own risk.

Governing Law

This limited warranty gives You specific legal rights, and You also may have other rights which vary from state to state. Some states do not allow limitations or exclusions on implied warranties or incidental or consequential damages, so the above limitations may not apply to You. This limited warranty is governed by the laws of the State of Minnesota, without regard to rules pertaining to conflicts of law. The state courts located in Dakota County, Minnesota shall have exclusive jurisdiction for any disputes relating to this warranty.



Distributed by:
Northern Tool & Equipment Company, Inc.
Burnsville, Minnesota 55306
www.northerntool.com

Made in China