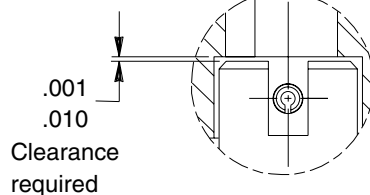
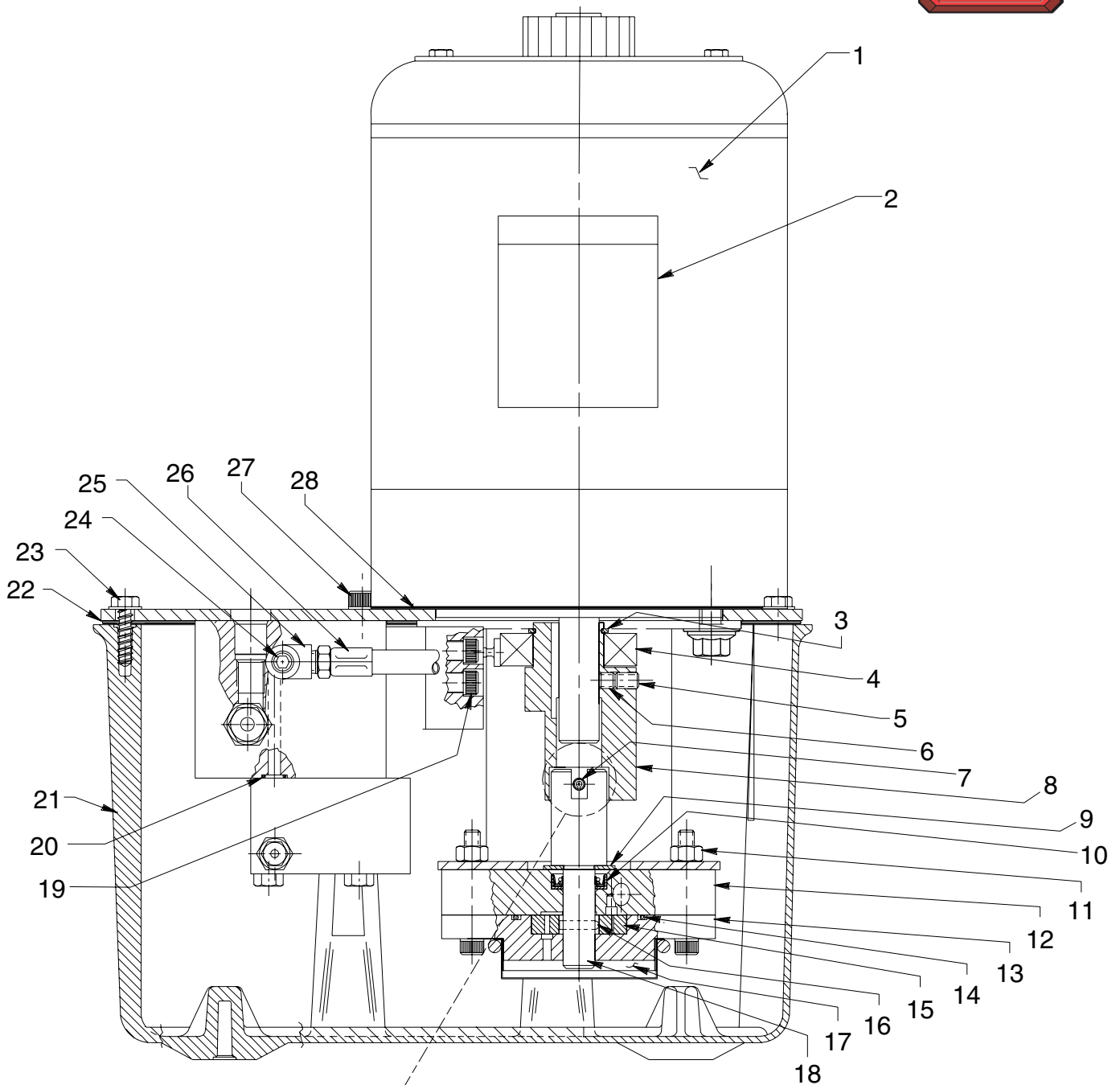


## MODEL B ELECTRIC HYDRAULIC PUMP

To Parts  
List



Item No.	Part No.	No. Req'd	Description
1	58274BK2	1	Electric Motor
2	*200188	1	Warning Decal
3	209798	1	Retaining Ring
4	209805	1	Ball Bearing
5	10519	1	Set Screw (1/4-20 UNC X 3/8 Lg.; Torque to 60/80 in. lbs.)
6	10136	1	Set Screw (1/4-20 UNC x 1/4 Lg.; Torque to 60/80 in. lbs.)
7	10973	1	Slotted Spring Pin (3/16 Dia. X 1-1/4 Lg. Note: Locate slot as shown.)
8	45596	1	Eccentric
9	12595	1	Washer (1-1/8 X 1/2 X .077 Thk.)
10	*304830	1	Oil Seal
11	10199	2	Hex Nut (1/4-20 UNC)
12	61702	1	Housing
13	64407	1	Gerotor Housing
14	*10922	1	O-ring (2-1/8 X 1-15/16 X 3/32)
15	304826	1	Gerotor
16	209794	1	Gerotor Drive Pin
17	21846	1	Filter Support
18	304835	1	Drive Shaft
19	10022	4	Screw (1/4-20 UNC X 1-1/2 Lg.; Torque to 180/200 in. lbs.)
20	*10266	1	O-ring (3/8 X 1/4 X 1/16)
21	61165	1	Reservoir
22	*40164	1	Gasket
23	209799	14	Cap Screw (1/4-10 X 7/8 Lg. Self-tapping; Torque to 50/60 in. lbs. Note: Four are for mounting the pump.)
24	10427	1	Pressure Plug (1/8 NPTF)
25	19463	1	Tee
26	304819	1	Hose Assembly
27	10030	1	Cap Screw (5/16-18 UNC X 3/4 Lg.; Torque to 220/240 in. lbs.)
28	351060	1	Motor Base Gasket

Part numbers marked with an asterisk (\*) are contained in Repair Kit No. 300912.

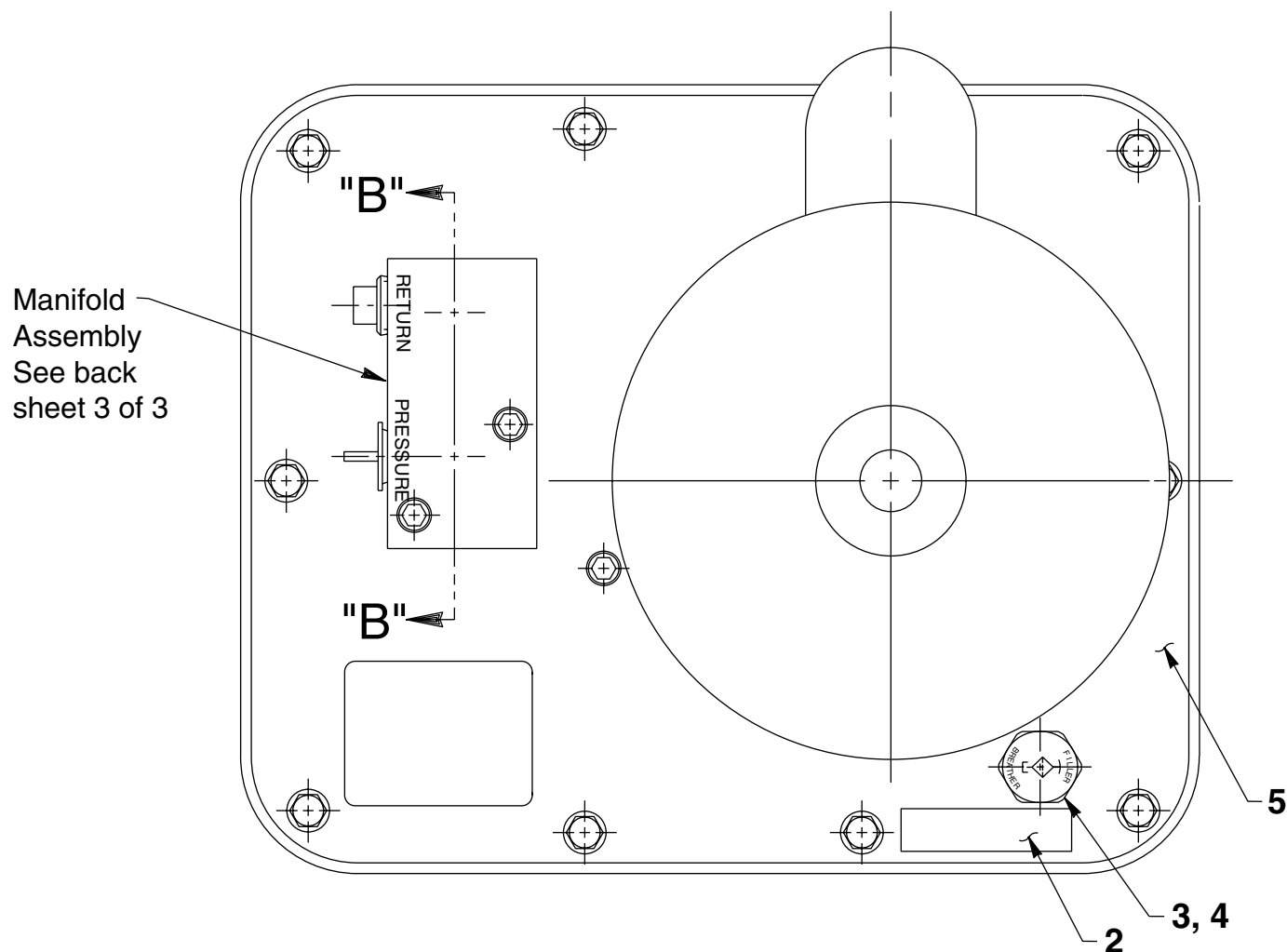


Refer to any operating instructions included with this product for detailed information about operation, testing, disassembly, reassembly, and preventive maintenance.

Items found in this parts list have been carefully tested and selected. **Therefore: Use only genuine Power Team replacement parts!**

Additional questions can be directed to our Technical Services Department.

## TOP VIEW

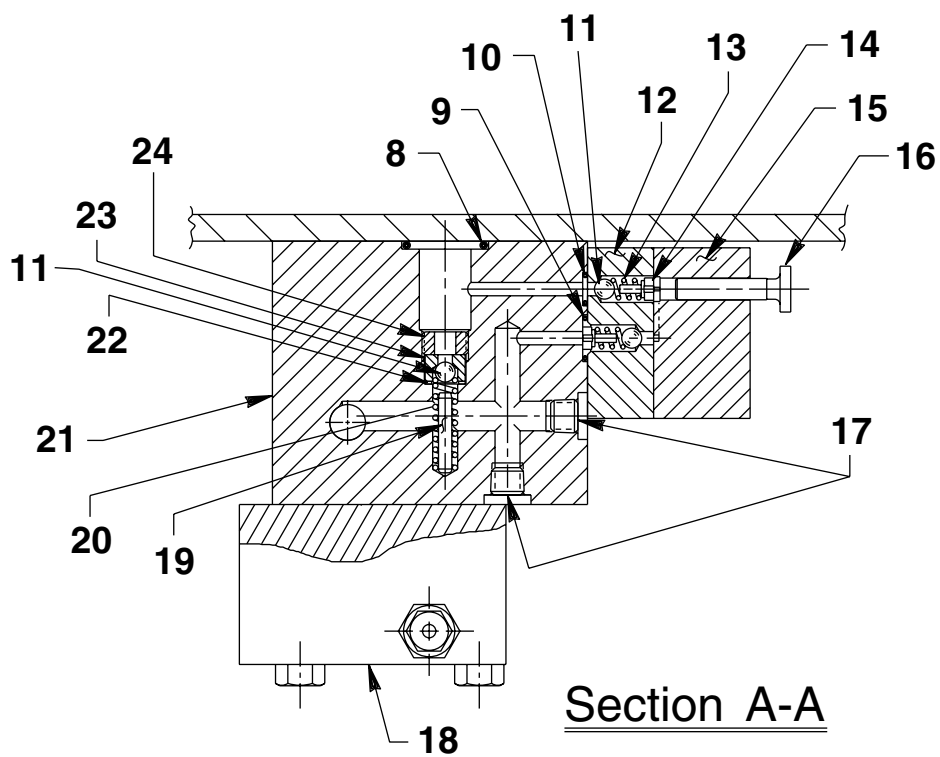
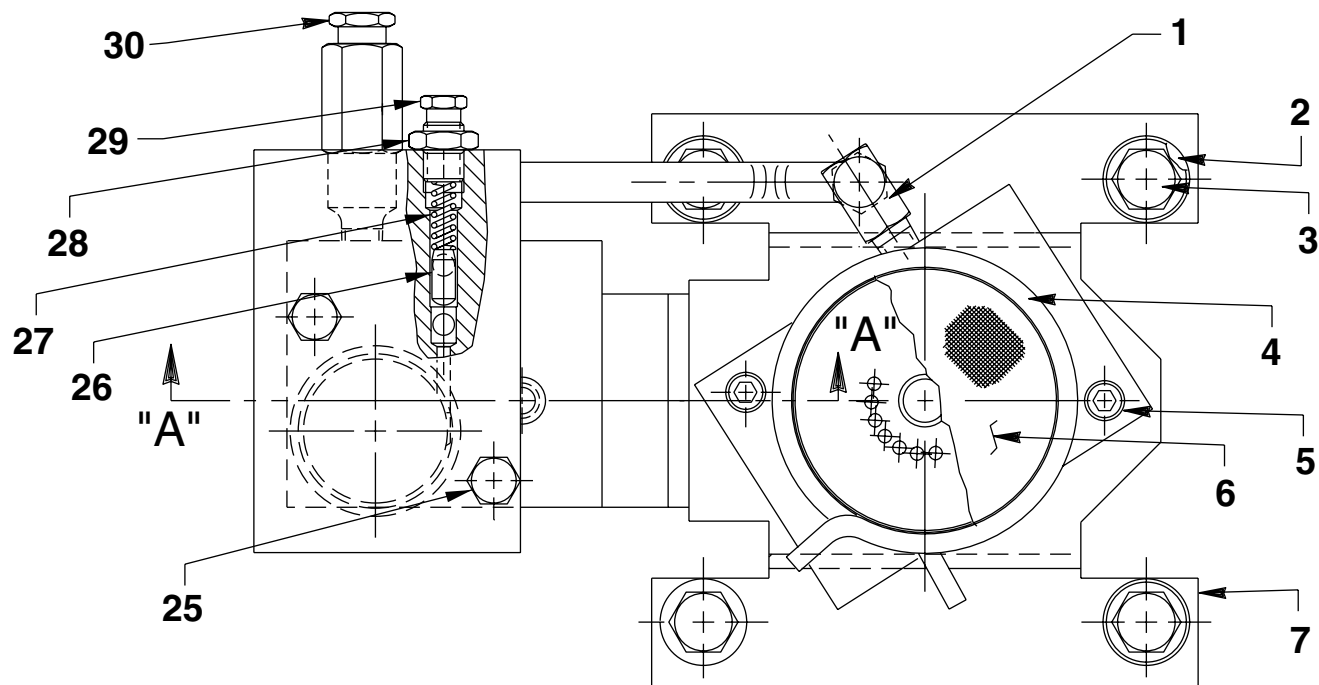


Item No.	Part No.	No. Req'd	Description
2	251874	1	Decal
3	20937	1	Vent Cap
4	200415	1	Rubber Gasket
5	66218BK2	1	Cover Plate

Note: Shaded areas and removal of Item #1 (211594) reflect last revision(s) made to this form.

## BOTTOM VIEW AND SECTION A-A

To Parts  
List

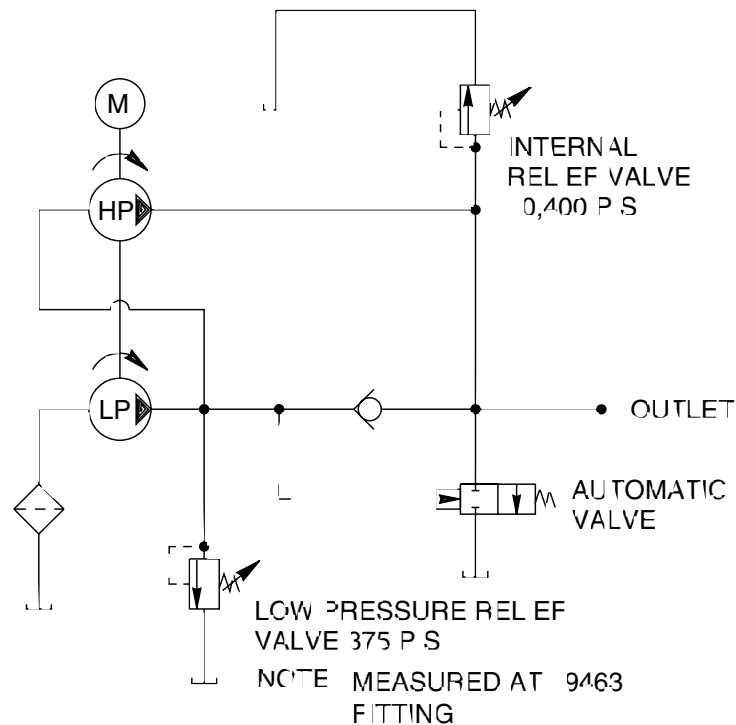


Item No.	Part No.	No. Req'd	Description	Item No.	Part No.	No. Req'd	Description
1	14440	1	90° Elbow Fitting	17	15130	2	Plug (1/16 NPTF)
2	10258	4	Washer (For 3/8 bolt)	18	58808	1	Automatic Valve Body
3	213663	4	Cap Screw (3/8-16 UNC X 1" Lg.; Torque to 230/250 in. lbs.)	19	12149	1	Pin (1/8 Dia. X 3/4 Lg.)
4	11461	1	Hose Clamp	20	*16057	1	Compression Spring (3/16 O.D. X 1" Lg.)
5	10854	2	Cap Screw (1/4-20UNC X 1-3/4 Lg.; Torque to 60/80 in. lbs.)	21	65226	1	Check Body
6	21608	1	Filter	22	*10442	1	Washer (3/8 X 1/4 X 1/32)
7	52174	1	Pump Mounting Bracket	23	*209787	1	Replaceable Seat
8	*10273	1	O-ring (13/16 X 5/8 X 3/32)	24	209797	1	Hollow Lock Screw (7/16-20 UNF-3A; Torque to 180/200 in. lbs.)
9	*14763	1	O-ring (7/16 X 5/16 X 1/16)	25	13037	2	Cap Screw (1/4-20 UNC X 2" Lg.; Torque to 40/50 in. lbs.)
10	*10265	1	O-ring (5/16 X 3/16 X 1/16)	26	211080	1	Pin
11	*12223	3	Ball (3/16 Dia.)	27	*11221	1	Spring (1/4 O.D. X 1" Lg.)
12	45559	1	Block	28	10386	1	Nut (3/8-24 UNF)
13	*10445	2	Compression Spring (5/32 O.D. X 3/4 Lg.)	29	*29786	1	Valve Adjusting Screw
14	24549	2	Ball Guide	30	21278	1	Relief Valve Assembly (Set at 10,100/10,700 PSI)
15	45866	1	Block				
16	305526	1	High Pressure Piston				

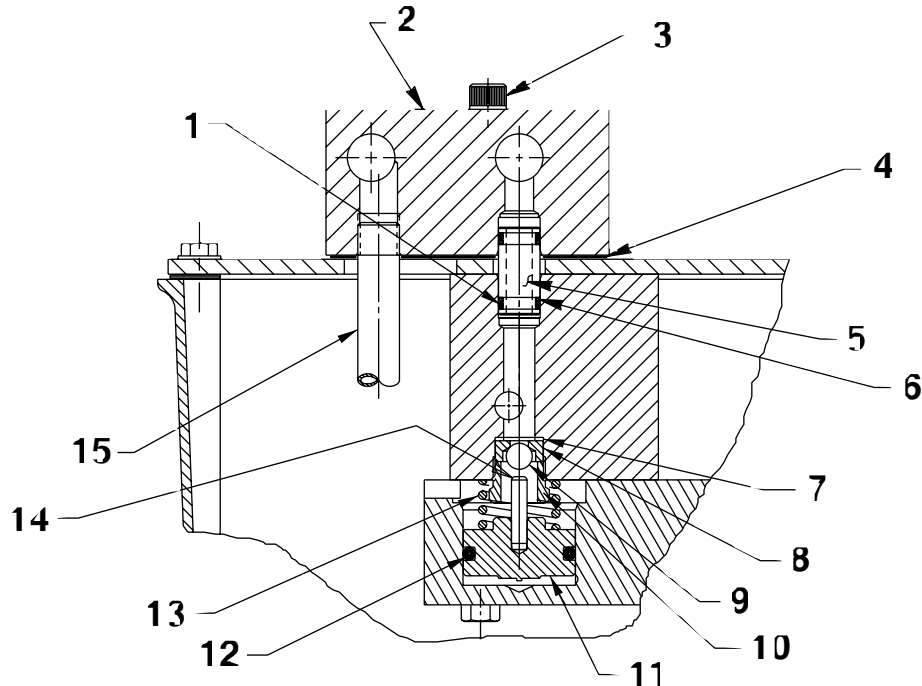
Part numbers marked with an asterisk (\*) are contained in Repair Kit No. 300912.



## HYDRAULIC SCHEMATIC



## SECTION B-B



Item No.	Part No.	No. Req'd	Description
1	<b>*10268</b>	2	O-ring (1/2 x 3/8 x 1/16)
2	<b>45554</b>	1	Manifold
3	<b>209945</b>	2	Cap Screw (5/16-18 UNC x 2-1/2 Lg.; Torque to 220/240 in. lbs.)
4	<b>*304829</b>	1	Gasket
5	<b>252181</b>	1	Coupling
6	<b>*11863</b>	2	Backup Washer (1/2 x 3/8 x 1/16)
7	<b>*12042</b>	1	Copper Washer (9/16 X 3/8 X 1/32)
8	<b>*252179</b>	1	Replaceable Seat

Item No.	Part No.	No. Req'd	Description
9	<b>*10377</b>	1	Steel Ball (5/16 Dia.)
10	<b>*252180</b>	1	Hollow Lock Screw (Torque to 180/200 in. lbs.)
11	<b>421305</b>	1	Auto Valve Piston
12	<b>*10280</b>	1	O-ring (1-3/8 X 1-1/8 X 1/8)
13	<b>*16346</b>	1	Comp. Spring (1" O.D. X 7/8 Lg.)
14	<b>251141</b>	1	Pin (3/16 dia. x 7/8 Lg.; Install with radius end out.)
15	<b>200609</b>	1	Drain Line

Part numbers marked with an asterisk (\*) are contained in Repair Kit No. 300912.

## ASSEMBLY INSTRUCTIONS

After all components have been installed and torqued, the electric motor/gerotor shafts must turn freely when rotated by hand. If binding is encountered, proceed as follows:

1. Loosen electric motor mounting screws and gerotor housing bolts.
2. Retighten screws finger tight.
3. Rotate shafts by hand until free (no binding).
4. Retorque per print.
5. Rotate shafts again by hand to verify that binding is not encountered after torquing.

Adjust the alignment of the low pressure pump section and the alignment of the high pressure pump section to reduce noise to a minimum. Torque screw #10030 (Item #27 on sheet 1 of 3) and screws #209945 (Item #3 on back sheet 3 of 3) before testing and after any alignment of the high pressure pump section. Always replace washers #10258 (Item #2 on sheet 2 of 3) if the low pressure pump section has been realigned and the washers have been deformed.