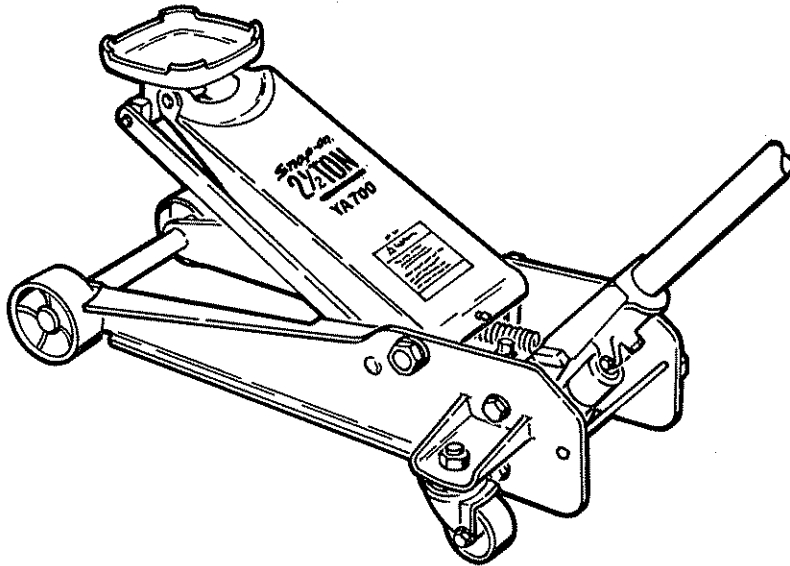


## OWNERS MANUAL

IT IS THE RESPONSIBILITY OF THE OWNER AND/OR OPERATOR TO PROPERLY USE AND MAINTAIN THIS SERVICE JACK. CAREFULLY READ AND UNDERSTAND THE INSTRUCTIONS AND WARNINGS IN THIS MANUAL BEFORE OPERATING THIS JACK.

If the operator is not fluent in English, the instructions and warnings shall be read and discussed in the operator's native language, making sure the operator comprehends the contents.

This equipment complies with OSHA Standards where applicable.



CONTENTS	PAGE
Safety Instructions .....	1
Specifications .....	2
Assembly Instructions .....	2
Inspection Instructions .....	2
Operating Instructions .....	2
Maintenance Instructions .....	2
Service .....	2
Parts Breakdown .....	3-4
Service Parts .....	4
Troubleshooting Chart .....	5
Warranty .....	6

**⚠ WARNING**

— FOR YOUR SAFETY —  
 Use vehicle stands to support the vehicle before getting under it.

**⚠ WARNING**

Failure to follow this warning may result in personal injury or property damage.

- Use jack only for lifting vehicles.
- Use vehicle stands after lifting.
- Use on hard, level surfaces.
- Do not exceed capacity rating.
- Do not use as a vehicle dolly.
- Follow instructions in this owners manual.

**SAFETY INSTRUCTIONS**

- Use lift cap lugs and cup to grip vehicle lift surfaces.
- Avoid off-center loading of lift cap.
- Jack wheels must be free to roll while lifting and lowering vehicle.
- Lift only on areas specified by the vehicle manufacturer.
- Lower vehicle slowly being careful not to shock load the jack.
- Reposition the jack if the vehicle pulls the lift arm sideways.

This manual contains **IMPORTANT WARNINGS** and **INSTRUCTIONS** READ AND RETAIN FOR REFERENCE

## SPECIFICATIONS

Capacity Rating .....	2½ tons
Low Pick-up Height .....	4 inches
High Lifting Point .....	23 inches
lift Cap (Square) .....	5¾ inches
handle Length .....	50 inches
Front Wheel Diameter ....	3¾ inches
Caster Wheel Diameter ...	2½ inches
Weight .....	110 lbs.

## ASSEMBLY INSTRUCTIONS

1. The service jack is completely assembled except for the handle assembly.
2. Back out the handle retaining bolt on the underside of the handle socket assembly.
3. Check the handle socket opening for adequate grease and insert the handle.
4. Tighten handle retaining bolt to 150-200 in-lbs.

## INSPECTION INSTRUCTIONS

1. Before each use, visually inspect the jack for damaged, bent, loose or missing parts.
2. If the visual inspection indicates overloading or shock loading, **Do not use the jack.** A Factory Authorized Service Center will assist you in evaluating the extent of the damage.
3. Operate the jack by pumping the handle. The lift arm and pump should operate smoothly without indications of binding. If jack acts spongy, see instructions on purging air from the hydraulic system.
4. Annual inspections by a Factory Authorized Service Center are recommended for continued safe use of the service jack.
5. A list of Factory Authorized Warranty and Service Centers is available upon request.

## OPERATING INSTRUCTIONS

### PURGING HYDRAULIC SYSTEM

Before using the jack, it may be necessary to purge trapped air from its hydraulic system:

1. Open release valve by turning the handle counterclockwise.
2. Pump the handle several full strokes to purge the air from the hydraulic circuits.
3. Close the release valve, turning the handle clockwise. Pump the handle raising the lift arm to its maximum height.
4. Continue pumping several times purging air from the ram hydraulic cylinder.
5. Lower the lift arm by turning the handle counterclockwise.
6. The jack should now be free of air. Repeat the procedure if the jack still feels spongy when used.

### LIFTING A VEHICLE

1. Check out the vehicles Service Manual to verify the recommended lifting surfaces on the chassis.
2. Operate the jack to bring the lift cap into light contact with the lifting surface.
3. Check to make sure the lift cap contacts the lift surface squarely and that the lugs engage in a secure manner to prevent lift cap slippage.
4. Make sure the jack is free to roll forward without any wheel obstructions or floor surface irregularities such as uneven expansion joints.
5. Pump the jack handle to raise the vehicle.
6. **Place stands of adequate capacity under the vehicle. Do not get under the vehicle to position the stands.**
7. The vehicle stands must be placed at vehicle manufacturers recommended lift areas that provide stable support for the raised vehicle.
8. Slowly turn the jack handle counterclockwise to lower the vehicle onto the vehicle stands. Lower the vehicle slowly so as not to shock load the vehicle stands.
9. When repairs are completed, raise the vehicle slightly to remove the vehicle stands and gently lower the vehicle to the ground by slowly turning the handle counterclockwise.

## MAINTENANCE INSTRUCTIONS

### CHECKING OIL LEVEL

1. Place lift arm in its lowest position.
2. Remove filler plug on the oil reservoir by turning counterclockwise.
3. Add clean hydraulic jack oil until the level is near the top of the inner hydraulic cylinder visible through the filler hole.
4. Reinstall the filler plug. Tighten only slightly more than hand tight.
5. **Only use clean hydraulic jack oil. Brake fluids or other oils will damage the seals in the jack.**

### LUBRICATION

All jack linkages and moving joints require frequent lubrication. Any chassis grease and motor oil can be used.

1. Remove the handle and grease the lower end where it rotates in the socket casting.
2. Use a grease gun and grease the lift arm fulcrum pin grease fitting until grease appears at the ends of the shaft.
3. Apply oil regularly to the pump roller and handle socket side plate pivot pins.
4. Oil all lift arm linkages, universal joint, front wheels and rear casters.

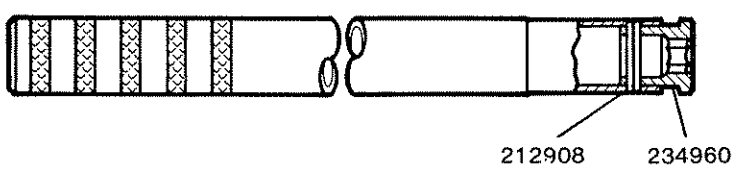
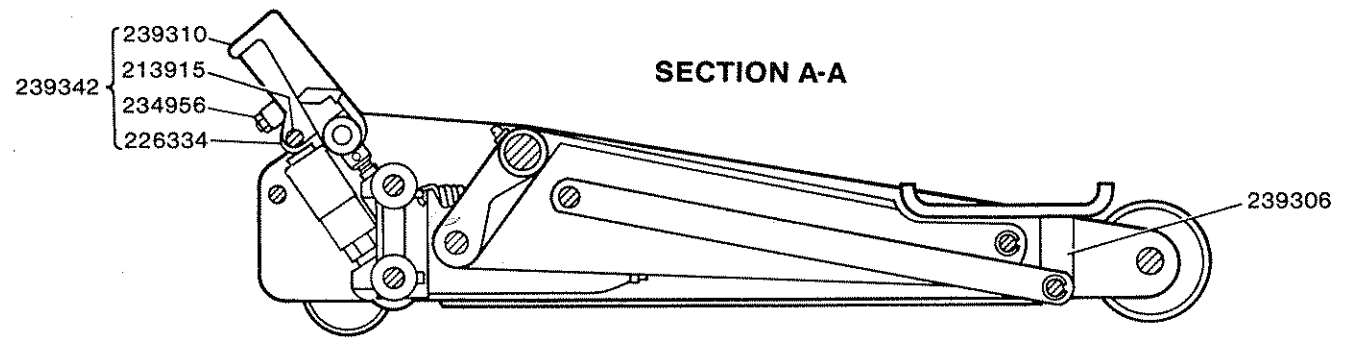
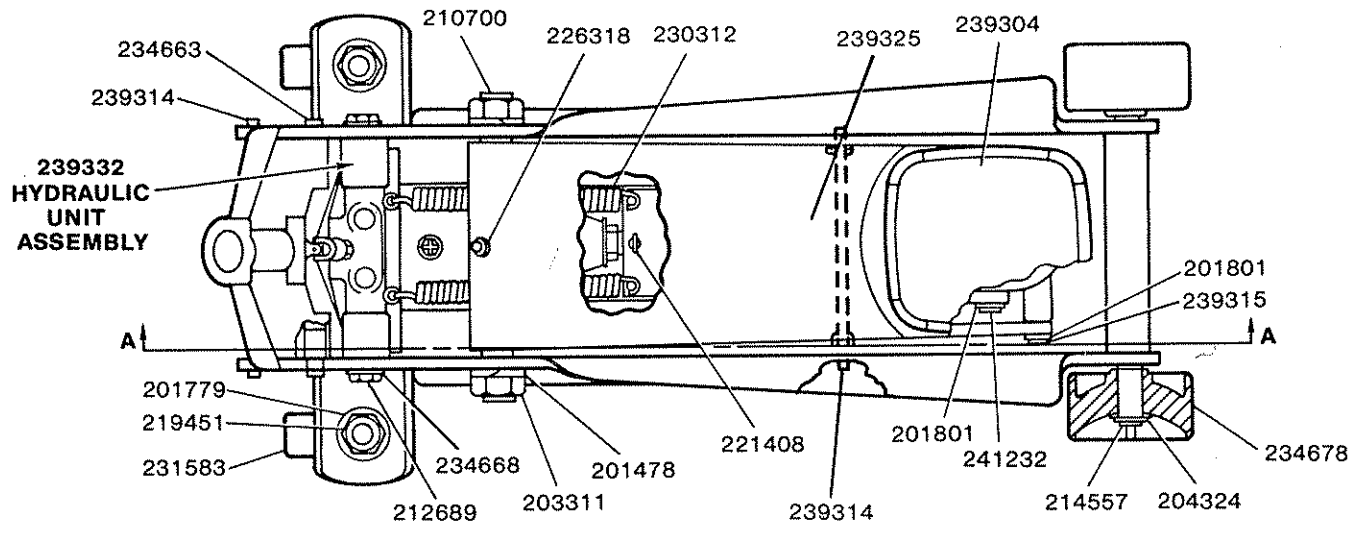
## SERVICE

If the troubleshooting procedures do not correct the problem, contact your nearest Authorized Warranty and Service Center. When submitting any jack to be repaired be sure to state the nature of the problem and indicate whether an estimate of the repair cost is needed.

When ordering replacement parts always provide the Model Number, Series Letter, Part Number and Description.

Lincoln provides a distributor network that stocks equipment and replacement parts.

YA700

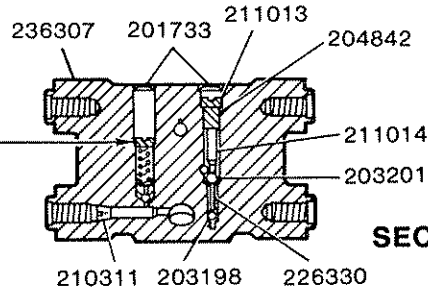


**234968  
HANDLE ASSEMBLY**

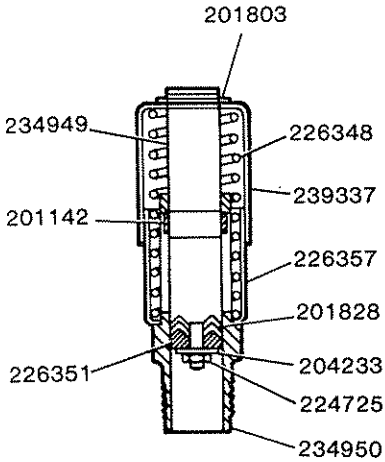
Label Kit	Seal Repair Kit
239407	240524

**DO NOT ADJUST**

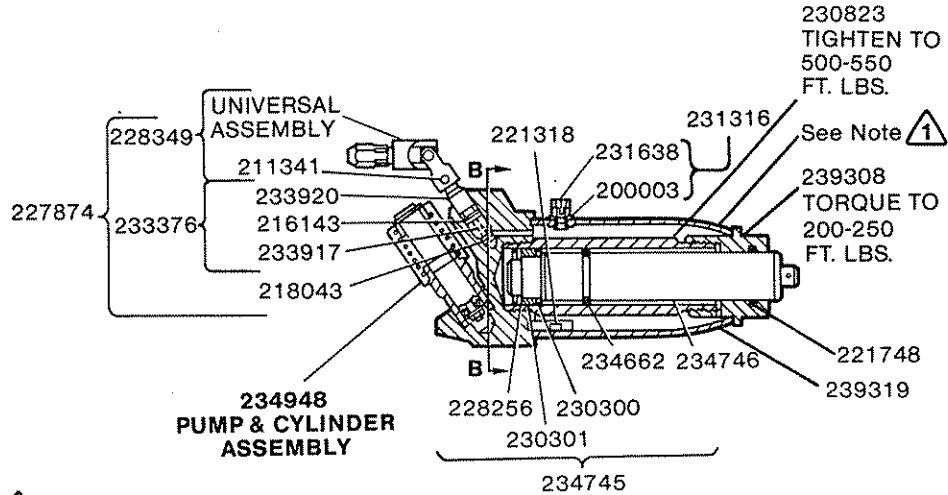
Safety valve is factory set. If adjustment or repair is required, return jack to nearest Authorized Warranty and Service Center.



**239332  
HYDRAULIC UNIT  
ASSEMBLY**



**234948  
PUMP & CYLINDER  
ASSEMBLY**



**NOTE** Apply light coating of Loctite Gasket Eliminator® 515 or equivalent to ends of tank before assembling tank nut.

**SERVICE PARTS**

Part	Qty.	Description	Part	Qty.	Description	Part	Qty.	Description
200003	1	Gasket	219451	2	Nut	234662	1	Snap ring
201142	1	Cross pin	221318	1	Suction screen	234663	2	Pin
201478	2	Lockwasher	221408	1	Cotter pin	234668	4	Washer
201733	2	Expansion plug	*221748	1	Quad ring	234678	2	Front wheel
201779	2	Washer	224725	1	Nut	234745	1	Ram assembly
201801	4	Retaining ring	226318	1	Grease fitting	234746	1	Ram
201803	1	Retaining ring	226330	1	Suction spacer	234948	1	Pump & cylinder ass'y.
*201828	3	V-packing	226334	1	Pump roller	234949	1	Pump piston
*203198	1	Ball	226348	1	Pump spring	234950	1	Pump cylinder
*203201	1	Ball	*226351	1	Rubber washer	234956	1	Hex head screw
203311	2	Nut	226357	1	Cup - pump sleeve	234960	1	Lower end
204233	1	Washer	227874	1	Release valve ass'y.	236307	1	Unit block
204324	2	Washer	*228256	1	U-cup packing	239304	1	Lift cap
*204842	1	Gasket	228349	1	Universal assembly	239306	1	Lift cap housing
210311	1	Pipe plug	230300	1	Back-up washer	239308	1	Tank nut
210700	1	Fulcrum pin	230301	1	Heel plate	239310	1	Handle socket
211013	1	Pressure plug	230312	2	Spring	239314	2	Shield bar
211014	1	Discharge spacer	230823	1	Cylinder	239315	1	Pin
211341	1	Rivet	231316	1	Plug & gasket ass'y.	239319	1	Oil tank
212689	4	Bolt	231583	2	Rear caster	239325	1	Bell crank assembly
212908	1	Groove pin	231638	1	Filler plug & vent ass'y.	239332	1	Hydraulic unit ass'y.
213915	1	Pin	233376	1	Release stem ass'y.	239337	1	Pump sleeve
214557	2	Retaining ring	233917	1	Spring	239342	1	Handle socket ass'y.
216143	1	O-ring	233920	1	Release stem	241232	1	Pin
218043	1	Valve						

\* Included in 240524 Seal Repair Kit.

## TROUBLESHOOTING

**Important:** As with any hydraulic system, this jack may become "air bound" from being tipped over during shipment or use. If jack feels spongy when operated, refer to the procedure on "purging the hydraulic system" in the operating instructions of this manual.

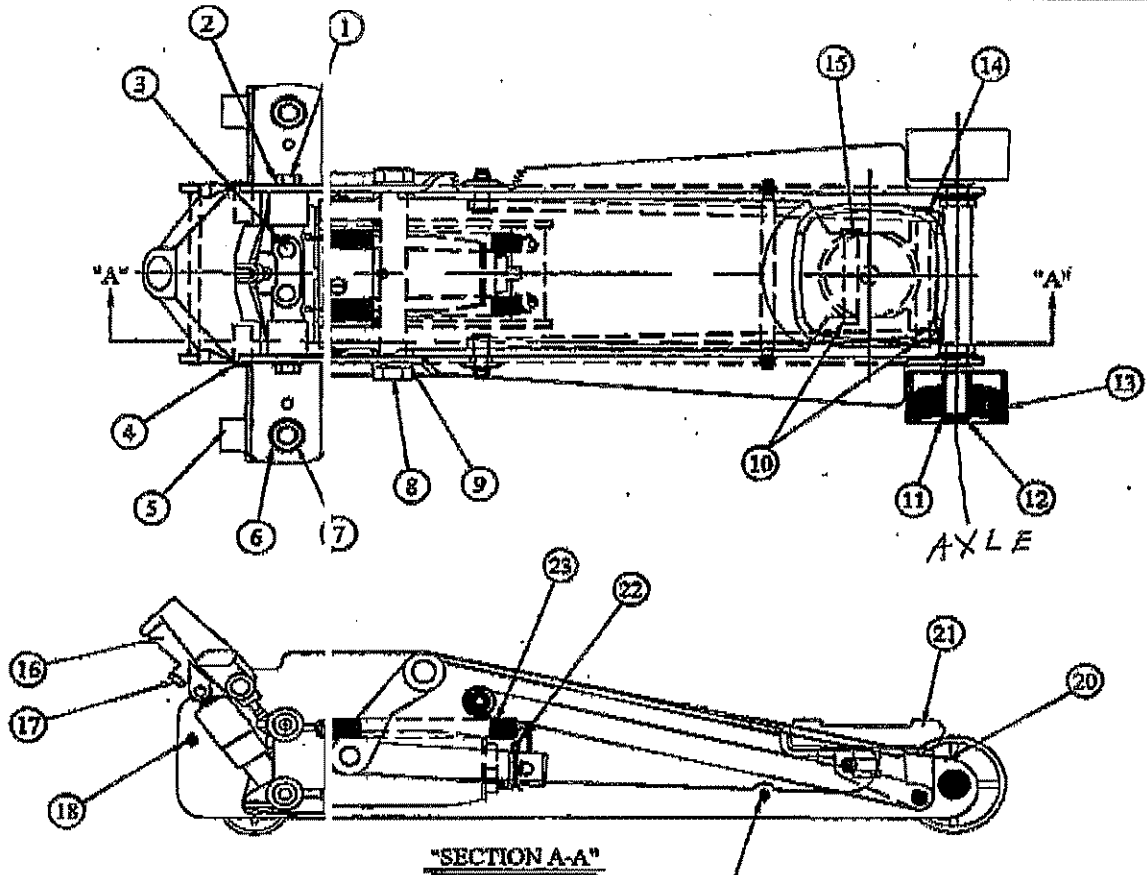
Problem	Solution
<ul style="list-style-type: none"><li>• Jack will not hold load or handle raises.</li></ul>	Discharge ball is probably not sealing. Hydraulic system and oil may be dirty. Manually flush hydraulic system by rapidly raising and lowering lift arm by hand. Operate the release valve as required to raise and lower the lift arm. Lift arm can be raised by placing foot on front axle.
<ul style="list-style-type: none"><li>• Jack feels spongy or will not lift.</li></ul>	Purge hydraulic system of air. See operating instructions.
<ul style="list-style-type: none"><li>• Jack will not lift to full height.</li></ul>	The hydraulic system is probably low on oil or might be overfilled. Check the oil level.
<ul style="list-style-type: none"><li>• Handle and release valve difficult to turn.</li></ul>	Grease the handle where it rotates in the handle socket. Oil the universal joint. Check release stem threads for binding.
<ul style="list-style-type: none"><li>• Lift arm will not lower properly.</li></ul>	Return spring broken or linkages binding. Lubricate the lift arm linkages and pull link joints.



# LINCOLN

2 1/2 TON YA 700  
3 TON SERVICE JACK  
MODEL: W93652

## PARTS SHEET



ITEM #	PART #	QTY.	DESCRIPTION
1.	212673	4	SCREW, 1/2-13 HHCS
2.	091-024-000	4	WASHER, FLAT 1/2"
3.	201733	2	PLUG
4.	234663	2	PIVOT PIN
5.	231583	2	CASTER
6.	092-013-000	2	WASHER, LOCK 3/4"
7.	219451	2	NUT, 3/4-10 HEX
8.	203311	2	NUT, 1/8-14 JAM
9.	201478	2	WASHER, LOCK
10.	201801	2	RETAINING RING
11.	214557	2	RETAINING RING
12.	204324	2	WASHER, FLAT 3/4"

AXLE 201489      AXLE, FRONT

ITEM #	PART #	QTY.	DESCRIPTION
13.	234678	2	WHEEL
14.	243838	1	PIN
15.	243839	1	PIN
16.	239342	1	HANDLE SOCKET
17.	234956	1	BOLT, 3/8-24 HEX
18.	239314	1	SHIELD BAR
19.	221704	1	PIN, DOWNSTOP
20.	239306	1	LIFT CAP HOUSING
21.	239304	1	LIFT CAP
22.	221408	1	COTTER PIN, 1/8"
23.	243618	2	RETURN SPRING

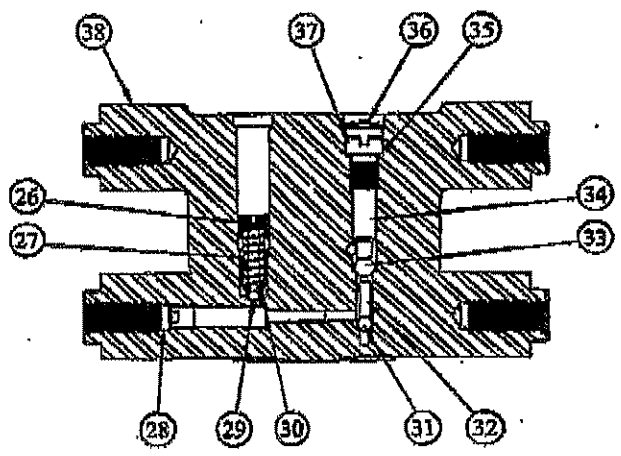
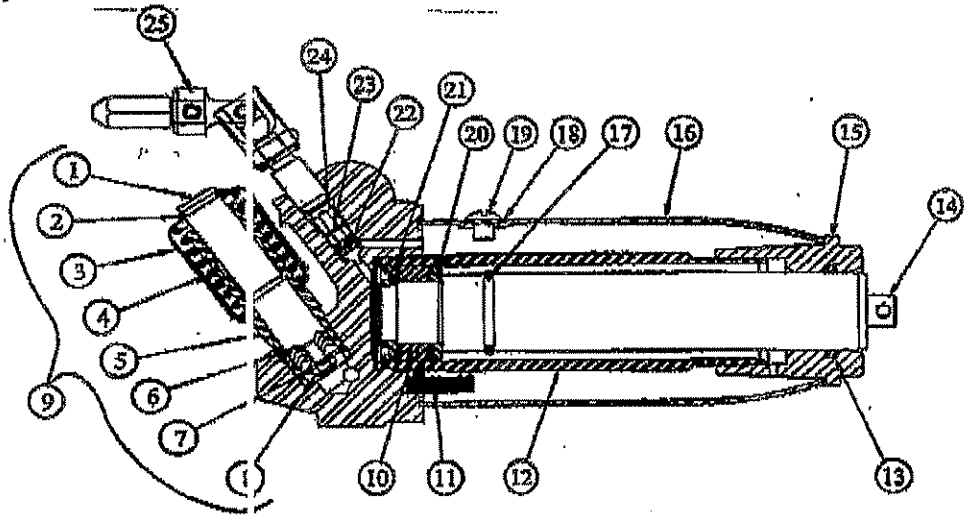
SEE OTHER SIDE FOR HYDRAULIC UNIT DETAIL

20115-

9231 PENN AVENUE SOUTH  
MINNEAPOLIS, MINNESOTA 55431  
CUSTOMER SERVICE: 1-800-328-2921

845-000-022

48002  
YA 700  
W93652



ITEM #	PART #	QTY.	DESCRIPTION
1.	243626	1	PUMP PISTON
2.	201802	1	RETAINING RING
3.	243628	1	PUMP SLEEVE
4.	226348	1	SPRING
5.	243627	1	PLUNGER CYLINDER
6.	201828	3	PACKING
7.	204233	1	WASHER, FLAT
8.	224725	1	NUT, #10-32 HEX
9.	234948	1	PUMP ASSEMBLY
10.	230301	1	HEAT PLATE
11.	221318	1	SCREEN
12.	230823	1	CYLINDER
13.	221748	1	QUAD RING
14.	234746	1	RAIL
15.	239308	1	TANK NUT
16.	239319	1	TANK
17.	234662	1	RINGS
18.	200003	1	GASKET
19.	231638	1	VENT PLUG 231316
20.	230300	1	WASHER, BACK-UP

ITEM #	PART #	QTY.	DESCRIPTION
21.	228256	1	"U"-CUP
22.	218043	1	RELEASE VALVE
23.	233917	1	SPRING, PLASTIC
24.	216143	1	O-RING GLAND
25.	<del>248731</del>	1	UNIVERSAL ASSEMBLY
26.	226373	1	ADJUSTMENT NUT
27.	226375	1	SPRING
28.	210311	1	PLUG
29.	203196	1	BALL
30.	226376	1	ADAPTER
31.	203198	1	BALL
32.	226330	1	SPACER
33.	203201	1	BALL
34.	211014	1	SPACER
35.	204842	1	GASKET
36.	201733	2	PLUG
37.	211019	1	PRESSURE PLUG
38.	226307	1	BASE
39.	<del>290-906-669</del>	1	HANDLE (NOT SHOWN)

25. 890-022-666 U-JOINT  
39. 234968 ONE PIECE HANDLE