



MODEL YA700B
2-1/2 TON CAPACITY
SERVICE JACK

OWNER/OPERATOR MANUAL



This is the safety alert symbol. It is used to alert you to potential personal injury hazards. Obey all safety messages that follow this symbol to avoid possible injury or death.

SAFETY INSTRUCTIONS

Save these instructions. For your safety, read, understand, and follow the information provided with and on this jack. The owner and operator shall have an understanding of this jack and safe operating procedures before attempting to use. The owner and operator shall be aware that use and repair of this product may require special skills and knowledge. Instructions and safety information shall be conveyed in the operator's native language before use of this jack is authorized. If any doubt exists as to the safe and proper use of this jack, remove from service immediately.

Inspect before each use. Do not use if broken, bent, cracked, or damaged parts (including labels) are noted. Any jack that appears damaged in any way, operates abnormally or is missing parts, shall be removed from service immediately and the manufacturer notified. If you suspect that the jack was subjected to a shock load (a load dropped suddenly, unexpectedly upon it), immediately discontinue use until the jack has been checked by a factory authorized service center (contact distributor or manufacturer for list of Authorized Service Centers). It is recommended that an annual inspection be done by qualified personnel. Replace worn or damaged parts and assemblies with Snap-on authorized replacement parts only.

PRODUCT DESCRIPTION


Snap-on Service Jack is designed to lift, but not sustain, one end of a vehicle. Immediately after lifting, loads must be supported by a pair of appropriately rated vehicle stands



NEVER use this jack as a stand alone device. After lifting, immediately support the lifted vehicle with a pair of appropriately rated vehicle stands.

BEFORE USE

1. Verify that the product and application are compatible.
2. Read the operator's manual completely and familiarize yourself thoroughly with the product, its components and recognize the potential hazards associated with its use.
3. Insert handle into handle fork. Tighten bolt on handle fork to prevent accidental removal of handle while in use.

 **Do not lift or carry jack by handle.** Handle could dislodge and jack fall, resulting in possible injury or property damage.

4. To familiarize yourself with basic operation of this jack, locate and turn the release valve (handle):
 - a. Clockwise until firm resistance is felt to further turning. This is the 'CLOSED' release valve position used to raise the load.
 - b. Counter-clockwise, but no more than 1/2 full turn from the closed position. This is the 'OPEN' release valve position used to lower the load.
5. With saddle fully lowered and release valve closed, pump the operating handle. If lift arm responds immediately, jack is ready to use. If jack does not respond, open release valve and pump 6 to 8 full strokes to purge air. Close release valve and recheck operation.
6. Jack should roll freely. Raise and lower the unloaded saddle throughout the lifting range before putting into service to ensure the pump operates smoothly.
7. Replace worn or damaged parts and assemblies with Snap-on authorized replacement parts only. Lubricate as instructed in Maintenance Section.



WARNING

- Study, understand, and follow all printed materials provided with/on this product before use.
- Do not exceed rated capacity.
- Use only on hard, level surface, capable of holding the load.
- This is a lifting device only. Immediately after lifting, support the vehicle with appropriately means.
- Do not move or dolly the vehicle while on the jack.
- Lift only on areas of the vehicle as specified by the vehicle manufacturer.
- No alterations shall be made to this product.
- Failure to heed these markings may result in personal injury and/or property damage.



WARNING



To avoid crushing and related injuries:

- Never work on, under or around a load supported only by hydraulic jack.
- Always use adequately rated jack stands.
- Chock each unlifted tire in both directions.
- Do not use this device to lift, level, lower, support nor move a house, mobile home, travel trailer, camper or any building structure.
- Be alert and sober when using this product. Do not operate under the influence of drugs or alcohol.



ADVERTENCIA

- Esta es una simple advertencia. Por favor lea las instrucciones y advertencias en inglés.

OPERATION

Lifting

! Only attachments and/or adapters supplied by the manufacturer shall be used. Lift only on areas of the vehicle as specified by the vehicle manufacturer.

1. Follow the vehicle manufacturer's recommended guidelines for lifting. Engage the emergency brake and chock unlifted wheels in both directions to prevent inadvertent vehicle movement.
2. Locate and close the release valve by turning the handle clockwise until firm resistance is felt.
3. Center jack saddle under lift point.
4. Verify lift point then use handle pump to contact lift point. To lift, pump handle until load reaches desired height.
5. Immediately Transfer the load to appropriately rated jack stands.

! **NEVER** use this jack as a stand alone device. After lifting, immediately support the lifted vehicle with a pair of appropriately rated vehicle stands.

! Overloading may cause hydraulic system failure.

Lowering

! Clear all tools and personnel before lowering vehicle. Open release valve slowly! The further release valve (handle) is turned counter-clockwise, the faster the load will come down. Maintain control of the rate of speed at which the load lowers at all times.

1. Raise load high enough to clear the jack stands.
2. Carefully remove jack stands.
3. **Slowly** turn release valve (handle) counter-clockwise, but no more than 1/2 full turn. *If the load fails to lower:*
 - a. Use another jack to raise the vehicle high enough to reinstall jack stands.
 - b. Remove the malfunctioning jack and then the jack stands.
 - c. Using the functioning jack, lower the vehicle.
4. After removing jack from under vehicle, push saddle down to reduce ram exposure to rust and contamination.

- KNOW YOUR PRODUCT -

MODEL	CAPACITY	MIN. HEIGHT	MAX. HEIGHT	JACK SIZE (L x W x H)
YA700B	2-1/2 Ton	5"	23-1/2"	30-3/4" X 15" X 7-1/4"

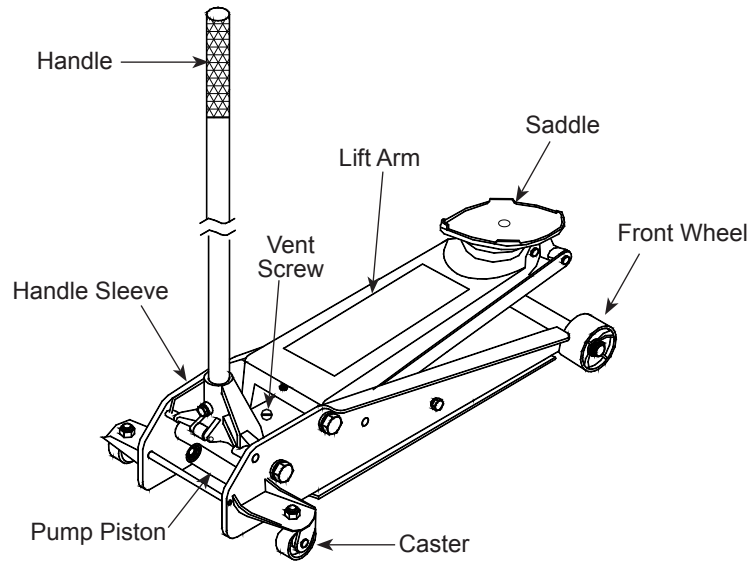


Figure 1 - YA700B Service Jack Nomenclature

MAINTENANCE

Important: Use only good quality hydraulic jack oil. Avoid mixing different types of fluid and never use brake fluid, turbine oil, transmission fluid, motor oil or glycerin. Improper fluid can cause failure of the jack and the potential for sudden and immediate loss of load. The manufacturer recommends only quality grade hydraulic jack fluid.

Adding oil

1. With saddle fully lowered, set jack in upright, level position. Locate and remove vent screw.
2. Fill with oil until ~3/16" above the inner cylinder as seen from the oil filler hole. If the oil level is too low, the jack will not raise to its advertised maximum height. Reinstall vent screw.

Changing oil

For best performance, completely replace fluid supply at least once per year.

1. With saddle fully lowered, remove the vent screw and drain the fluid into a suitable container.
2. Fill with oil until ~3/16" above the inner cylinder as seen from the oil filler hole. Reinstall the vent screw.

Note: Dispose of hydraulic fluid in accordance with local environmental regulations.

Lubrication

A periodic coating of light lubricating oil to pivot points, axles and hinges will help to prevent rust and assure that wheels, casters and pump assemblies move freely.

Cleaning

Periodically check the pump piston and ram for signs of rust or corrosion. Clean as needed and wipe with an oily cloth.

Note: Never use sandpaper or abrasive material on these surfaces!

Storage

Lower the saddle to its lowest position when not in use.

REPLACEMENT PARTS

(refer to page 3)

Not all components of the jacks are replacement items, but are illustrated as a convenient reference of location and position in the assembly sequence. When ordering parts, give Model number, serial number and parts description. Write for current pricing: Snap-on Tools Company, Kenosha, WI 53141-1410

Replacement Parts List:

Key Number	Snap-on Stock Number	Description
1	YA700B1	Rear Caster
2	YA700B2	Handle - Red
3	YA700B3	Universal Joint
4	YA700B4	Front Wheel
5	YA700B5	Power Unit
6	YA700B6	Saddle
7	YA700B7	Air Vent w/Gasket
8	YA700B8	Washer & Retaining Ring
9	YA700B9	Handle Retaining Bolt
10	YA700B10	Return Spring (2 pc.)
11	YA700B11	Pump Piston Assembly
12	YA700B12	Handle Insert & Pin

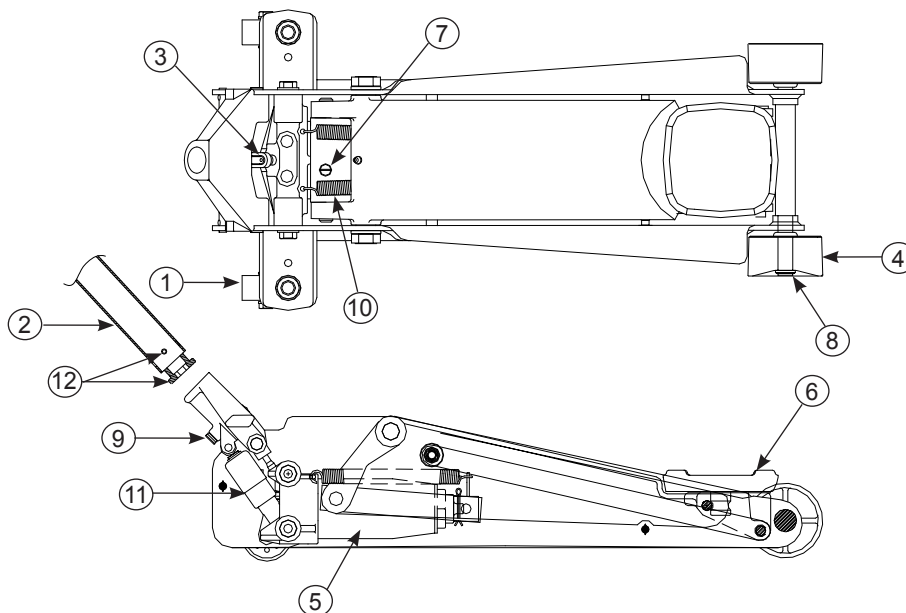


Figure 2 - YA700B Replacement Parts Illustration

TROUBLESHOOTING

Symptom	Possible Causes	Corrective Action
Jack will not lift load	<ul style="list-style-type: none"> Release valve not tightly closed Overload condition 	<ul style="list-style-type: none"> Ensure release valve tightly closed Remedy overload condition
Jack bleeds off after lift	<ul style="list-style-type: none"> Hydraulic unit malfunction 	<ul style="list-style-type: none"> Discontinue use, contact Snap-on Technical Service
Jack will not lower after unloading	<ul style="list-style-type: none"> Reservoir overfilled Linkages binding Fluid level low 	<ul style="list-style-type: none"> Drain fluid to proper level Clean and lubricate moving parts Ensure proper fluid level
Will not lift to full extension	<ul style="list-style-type: none"> Fluid level low 	<ul style="list-style-type: none"> Ensure proper fluid level

LIMITED WARRANTY STATEMENT

Snap-on Tools warrants this product to be free from defects in material and workmanship for a period of 2 years from date of purchase. This warranty applies to the original purchaser (end user) only and is not transferable. Damaged components and assemblies i.e. bent ram and pump pistons, dented reservoirs, cracked or altered components, are the result of misuse, misapplication or a combination of both. These conditions will not be considered for warranty credit. We have complete confidence that the Snap-on product you purchase will meet or exceed your performance requirement. However in the unlikely event that a Snap-on product fails due to material or workmanship defect within the warranty period you may contact your retailer for disposition or you may contact an Authorized Service Center listed in the product owner's manual. Except where such limitations and exclusions are specifically prohibited by law, the consumer's sole and exclusive remedy shall be the repair or replacement of the defective product. Snap-on shall not be liable for any consequential or incidental damage or loss whatsoever, and the duration of any and all expressed and implied warranties, including without limitation, any warranties of merchantability and fitness for a particular purpose, is limited to a period of 2 years from date of purchase. Some States do not allow the exclusion or limitation of incidental or consequential damages, so the above may not apply to you. This warranty gives you specific legal rights. You may also have other rights which vary from state to state.
