

## OWNER/OPERATOR MANUAL

### SAVE THESE INSTRUCTIONS

For your safety *read, understand, and follow* the information provided with and on these jacks. The owner and operator of these equipments shall have an understanding of these jacks and safe operating procedures before attempting to use. The owner and operator shall be aware that use and repair of these products may require special skills and knowledge. Instructions and safety information shall be conveyed in the operator's native language before use of these jacks are authorized. If any doubt exists as to the safe and proper use of this jack, remove from service immediately.

**Inspect before each use.** Do not use if there are broken, bent, cracked, or damaged parts (including labels). Any jack that appears damaged in any way, operates abnormally, or is missing parts, shall be removed from service immediately. If the jack has been or is suspected to have been subjected to a shock load (a load dropped suddenly, unexpectedly upon it), immediately discontinue use until the jack has been checked by a Snap-on authorized service center. It is recommended that an annual inspection be done by qualified personnel. Labels and Operator's Manual are available from manufacturer.

### PRODUCT DESCRIPTION

Blue-Point Hydraulic Service Jacks are designed to lift, **not** sustain, rated capacity loads. They are designed to be used in conjunction with jack stands. **Intended use:** To lift one wheel or one axle of a vehicle for the purpose of service and/or repair of vehicle components. After lifting, loads must be immediately supported by appropriately rated jack stands. Check with vehicle owner's manual for proper lift points.

**DO NOT USE TO DOLLY OR MOVE VEHICLE.**

**DO NOT USE FOR ANY PURPOSE OTHER THAN THOSE USES OUTLINED ABOVE !**

### BEFORE USE

1. Verify that the product and application are compatible, if in doubt call Snap-On technical service.
2. Read the operator's manual completely and familiarize yourself thoroughly with the product, its components and recognize the potential hazards associated with its use **before** the use of this product.
3. Follow assembly instructions
4. Lower saddle fully.
5. Locate and remove the air vent screw.
6. Ensure the oil level is within ~ 3/16" from the inner cylinder as viewed from the air vent screw hole.
7. Reinstall the air vent screw.
8. Close release valve by turning the release knob clockwise until firm resistance is felt.
9. Ensure that the jack rolls freely.
10. Raise and lower the unloaded saddle through out the lift range before putting into service to ensure the pump and release valve operate smoothly.
11. Replace worn or damaged parts and assemblies with Snap-on Replacement Parts only. (See Replacement Parts Section). Lubricate as instructed in Maintenance Section.

### ASSEMBLY

#### EQUIPMENT NEEDED FOR ASSEMBLY

1. Needle nose locking pliers
2. Snap-ring pliers (for: YA657B and YA667B only)
3. 15 /16" wrench (for: YA660B and YA662B only)
4. Hammer
5. Tape measure
6. All necessary hardware is included and is assembled loosely onto the jack

#### ASSEMBLY INSTRUCTION

1. Remove the service jack base and handle from the carton.
2. For YA657B and YA667B, see figure 1 to remove the retaining ring and the handle pivot pin from the jack base that connects through the handle

### (continued)

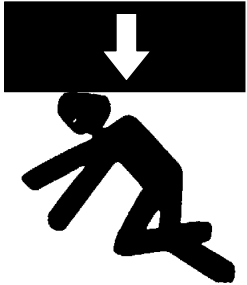
- fork. For YA660B and YA662B (as shown in figure 2) remove the 5/16-18 bolts and the pin from the jack base that connects through the handle fork.
3. Remove the #6-32 screw and nut from the universal receptacle on top of the hydraulic unit.
4. Pull the universal assembly, located on the bottom of the handle, out a minimum of 1-3/4".
5. Clamp the needle nose locking pliers onto the rod so that the universal assembly will not retract back into the handle.
6. Slide the universal assembly into the handle socket so that it extends out the other side.
7. Push the pivot pin that was removed in step 2 back through the handle and handle socket (may have to gently tap the pin with a hammer).
8. Align the pivot pin with the holes on the side plates that the pivot pin was removed from and tighten the 5/16"-18 bolts into the pivot pin until secure. (for YA660B and YA662B only)
9. Connect the universal assembly to the universal receptacle rod using the #6-32 screw and nut from note 4 (finger tighten only).
10. Remove the needle nose locking pliers.
11. Jack is now operational and ready for use.

#### Helpful hint:

If the jack cover is a hindrance, it can be removed by using a 1/8" punch and tapping out the pivot pins (be sure to attach the cover back to the jack after assembly is completed).



**! WARNING**



To avoid crushing and related injuries:  
**NEVER** work on, under or around a load supported only by a jack.  
**ALWAYS** use adequately rated jack stands. Immediately transfer loads to appropriate jack stands.

**! WARNING**

- Study, understand, and follow all instructions provided with and on this device before operating this device.
- Do not exceed rated capacity.
- This is a lifting device only.
- After lifting, immediately transfer the load to appropriately rated vehicle stands.
- Never work on, under, or around a load supported by this device.
- Use only on hard, level surfaces capable of sustaining rated capacity loads.
- Do not move or dolly loads with this device.
- Do not modify this device.
- Do not use adapters or accessories that are not provided initially.
- Lift only on areas of the vehicle as specified by the vehicle manufacturer.
- Failure to heed these markings may result in personal injury and/or property damage.

## OPERATION

### Lifting

- Place the vehicle in the park gear.
- Engage the emergency brake.
- Chock the wheels securely to prevent inadvertent vehicle movement.
- Locate and close the release valve by turning release knob clockwise, firmly.
- Center jack saddle under lift point. Refer to the vehicle manufacturer owner's manual to locate approved lifting points on the vehicle.
- Verify lift point then use handle pump to contact lift point. To lift, pump handle until load reaches desired height.
- Transfer the load immediately to appropriately rated jack stands.

### To lower load

- Raise load high enough to clear the jack stands.
- Remove jack stands, carefully. (**always** used in pairs).
- Slowly turn the release knob counter-clockwise, but no more than 1/2 turn.  
If the load fails to lower:
  - Use another jack to raise the vehicle high enough to reinstall jack stands.
  - Remove the malfunctioning jack and then the jack stands.
  - Using the functioning jack, lower the load by turning the operating handle counterclockwise, but no more than 1/2 turn.
- Push saddle down to reduce ram exposure to rust and contamination after removing the jack from under the load.

**! ADVERTENCIA**

- Leer, comprender, y seguir las instrucciones antes de utilizar el aparato.
- El manual de instrucciones y la información de seguridad deben estar comunicado en lengua del operador antes del uso.
- No seguir estas indicaciones puede causar daños personales o materiales.

## MAINTENANCE

**Important:** Use only a good grade hydraulic jack oil. Avoid mixing different types of fluid and **Never** use brake fluid, turbine oil, transmission fluid, motor oil or glycerin. Improper fluid can cause failure of the jack and the potential for sudden and immediate loss of load. We recommend Mobil DTE 13M.

### Adding oil

- Lower saddle fully.
- Set jack in its upright, level position.
- Locate and remove air vent screw
- Fill with oil until ~3/16" above the inner cylinder as seen from the air vent screw hole.
- Reinstall the air vent screw

### Changing oil

For best performance and longest life, replace the complete hydraulic fluid at least once a year.

- Lower saddle fully.
- Remove the air vent screw.
- Lay the jack on its side and drain the fluid into a suitable container.

**Note:** Dispose of hydraulic fluid in accordance with local regulations.

- Fill with oil until ~3/16" above the inner cylinder as seen from the air vent screw hole.
- Reinstall the air vent screw.

### Lubrication

A periodic coating of light lubricating oil to pivot points, axles and hinges will help to prevent rust and assure that wheels, casters and pump assemblies move freely.

### Cleaning

Periodically check the pump piston and ram for signs of rust or corrosion. Clean as needed and wipe with an oily cloth.

**Note:** Never use sandpaper or abrasive material on these surfaces!

### Storage

Lower the saddle to its lowest position when not in use.



## - KNOW YOUR PRODUCT -

| Model                  | Capacity | Jack Size ( L x H ) | Min. Height | Max. Height |
|------------------------|----------|---------------------|-------------|-------------|
| YA657B                 | 4 Ton    | 48-1/4" x 7-1/2"    | 5-1/4"      | 26"         |
| YA667B<br>Air / Manual | 4 Ton    | 48-1/4" x 7-1/2"    | 5-1/4"      | 26"         |
| YA660B                 | 10 Ton   | 53-3/8" x 9-3/4"    | 5-7/8"      | 26"         |
| YA662B<br>Air / Manual | 10 Ton   | 53-3/8" x 9-3/4"    | 5-7/8"      | 26"         |

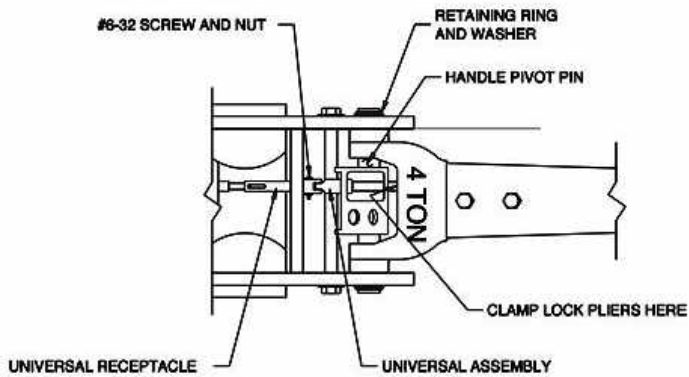


Figure 1 - YA657B / YA667B

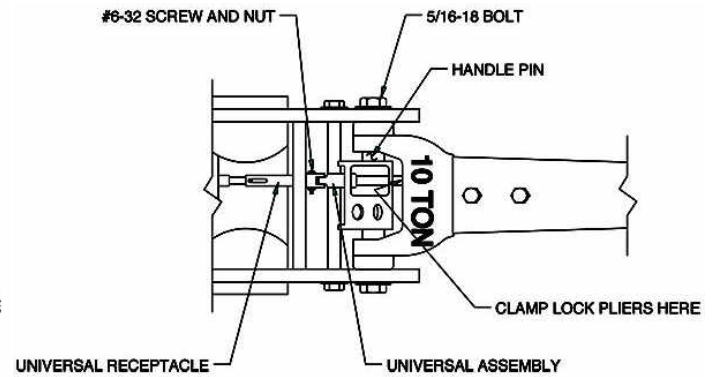


Figure 2 - YA660B / YA662B

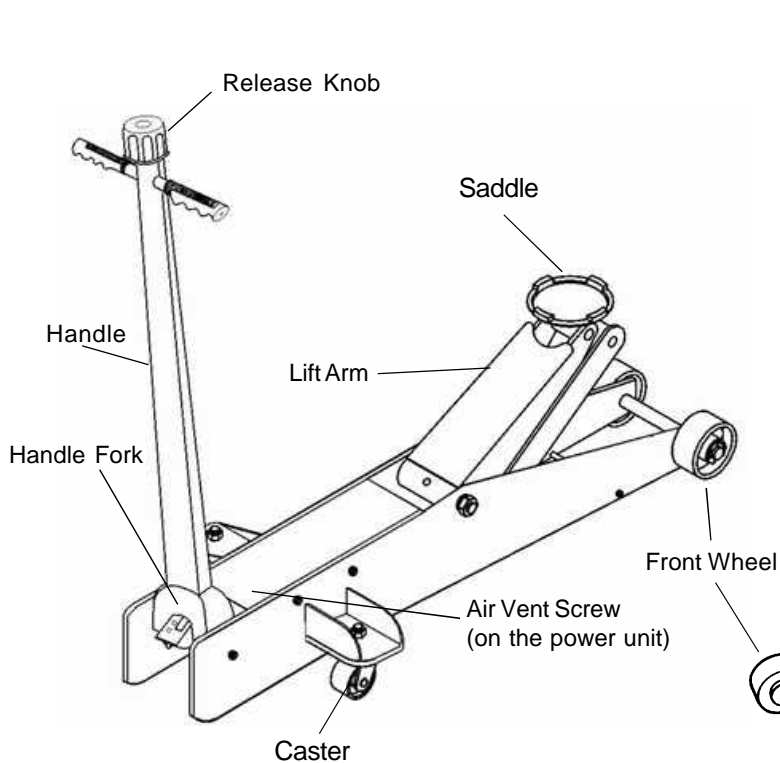


Figure 3 - YA657B / YA660B Nomenclature

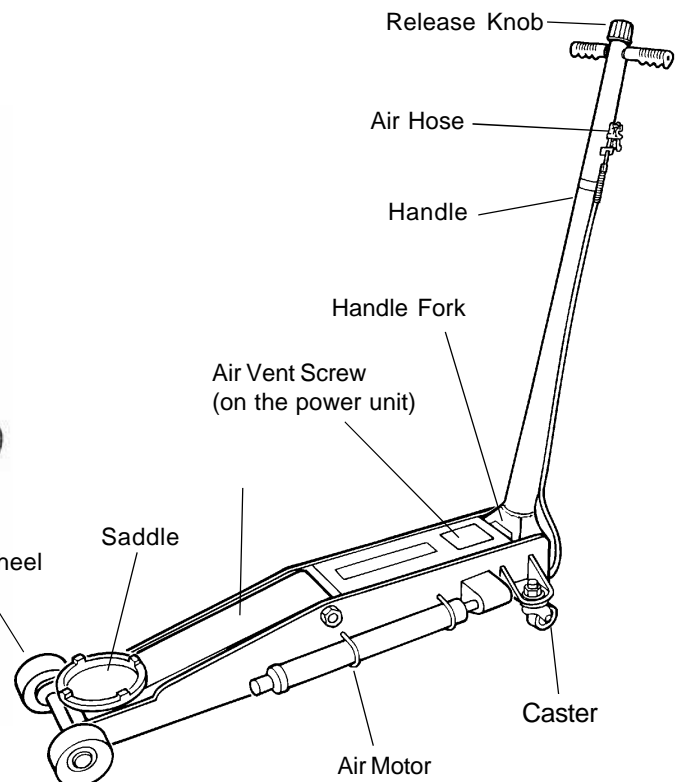


Figure 4 - YA667B / YA662B Nomenclature



## TROUBLESHOOTING

| Symptom                             | Possible Causes   | Corrective Action  |
|-------------------------------------|---|--|
| Jack will not lift load             | <ul style="list-style-type: none"><li>• Release knob not tightly closed</li></ul>   | <ul style="list-style-type: none"><li>• Ensure release knob tightly closed</li></ul>   |
| Jack bleeds off after lift          | <ul style="list-style-type: none"><li>• Hydraulic unit malfunction</li></ul>  | <ul style="list-style-type: none"><li>• Contact Snap-on Technical Service</li></ul>  |
| Jack will not lower after unloading | <ul style="list-style-type: none"><li>• Reservoir overfilled</li><li>• Linkages binding</li><li>• Fluid level low</li></ul> | <ul style="list-style-type: none"><li>• Drain fluid to proper level</li><li>• Clean and lubricate moving parts</li><li>• Ensure proper fluid level</li></ul> |
| Will not lift to full extension     | <ul style="list-style-type: none"><li>• Fluid level low</li></ul>   | <ul style="list-style-type: none"><li>• Ensure proper fluid level</li></ul>  |

## REPLACEMENT PARTS

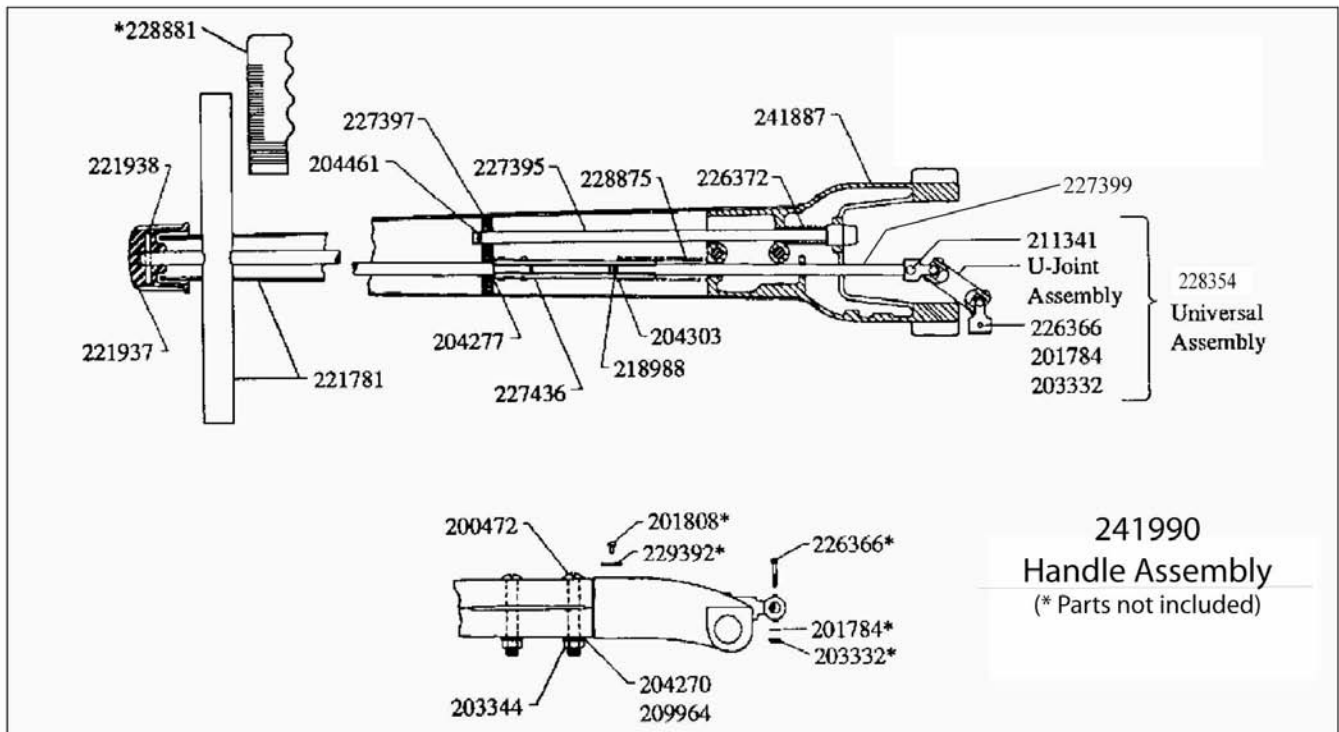
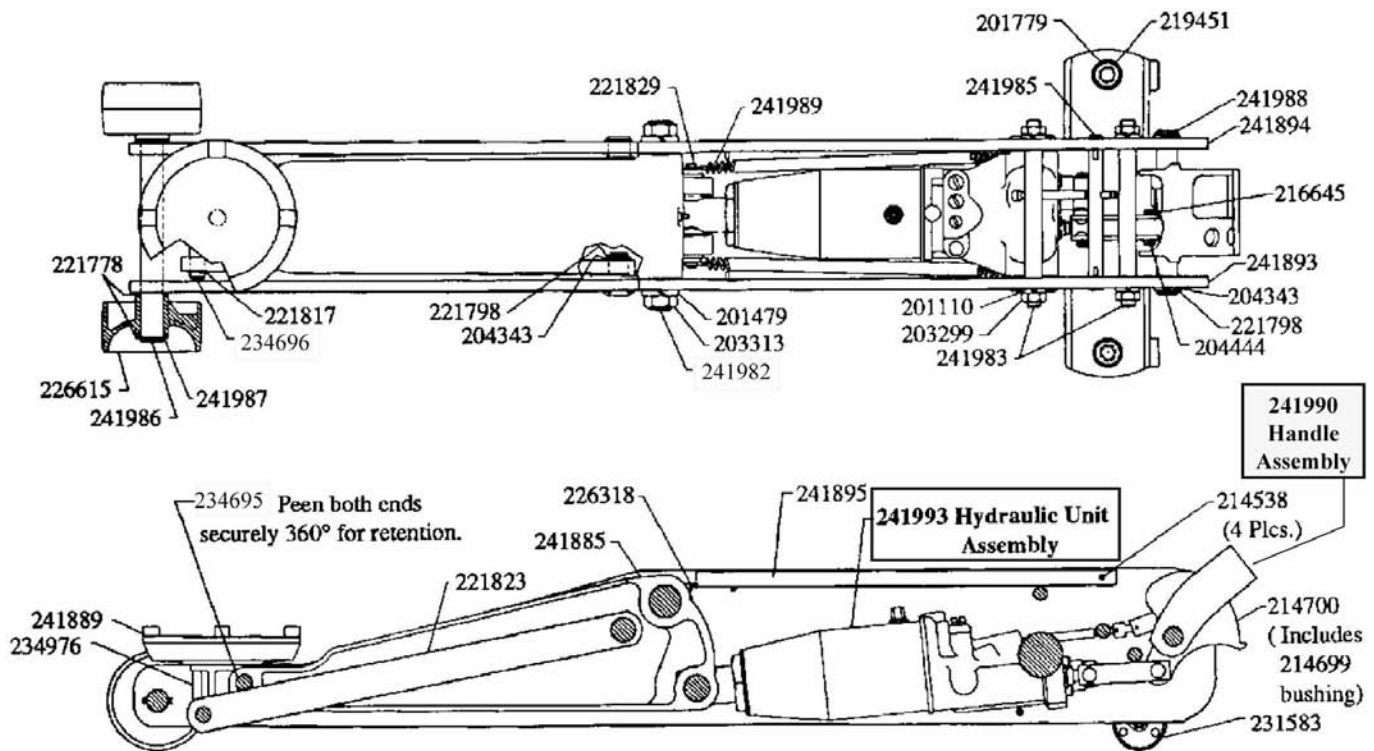
(See attached exploded drawing)

When ordering replacement parts, please refer to the model number / serial number found on the product, then give the part number and description.

Available Parts: Please refer to the Parts drawing when ordering parts. Not all components of the jack are replacement items, but are illustrated as a convenient reference of location and position in the assembly sequence. When ordering parts, give Model number, serial number and description below. Call or write for current pricing: Snap-on Tools Company, Kenosha, WI 53141-1410



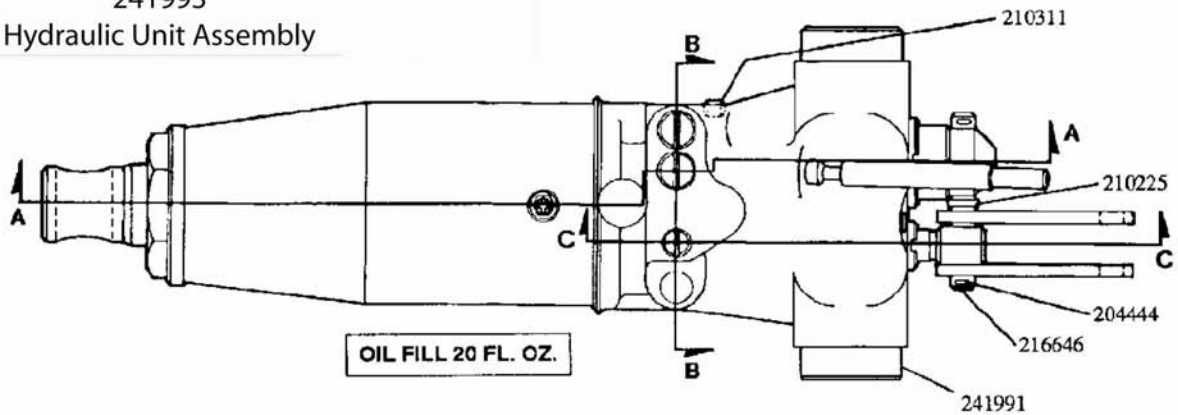
## Service Parts for Model YA657B



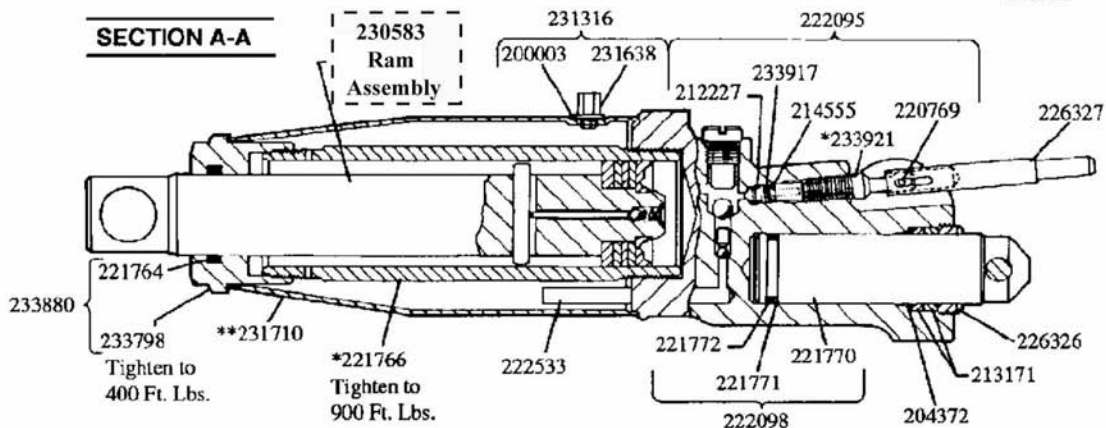


## Service Parts for Model YA657B (continued) - Hyd. Unit

241993  
Hydraulic Unit Assembly

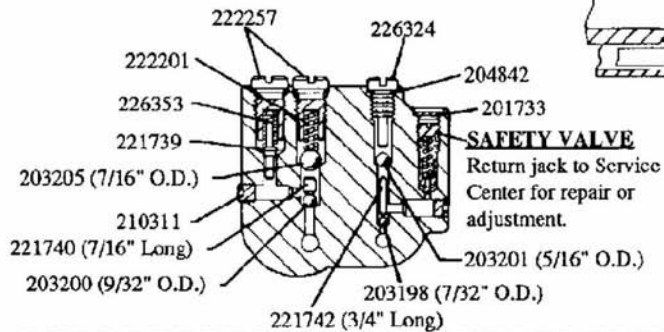


### SECTION A-A

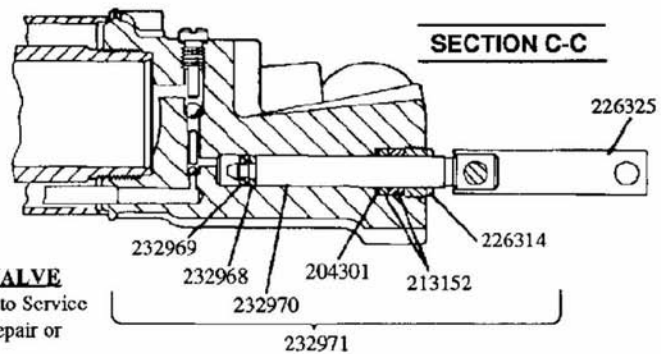


**NOTE:** \* Apply Never-Seez to threads before tightening.  
\*\* Apply Never-Seez to both ends of tank before assembling.

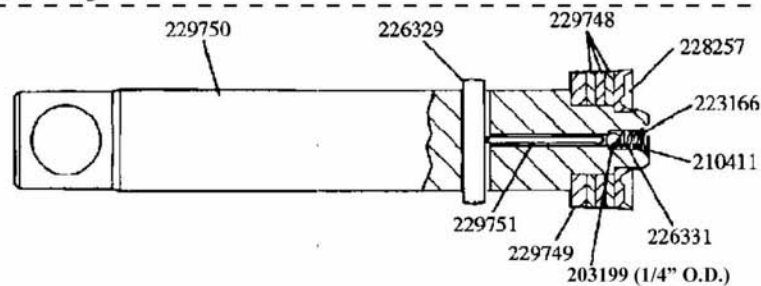
### SECTION B-B



### SECTION C-C



230583  
Ram Assembly





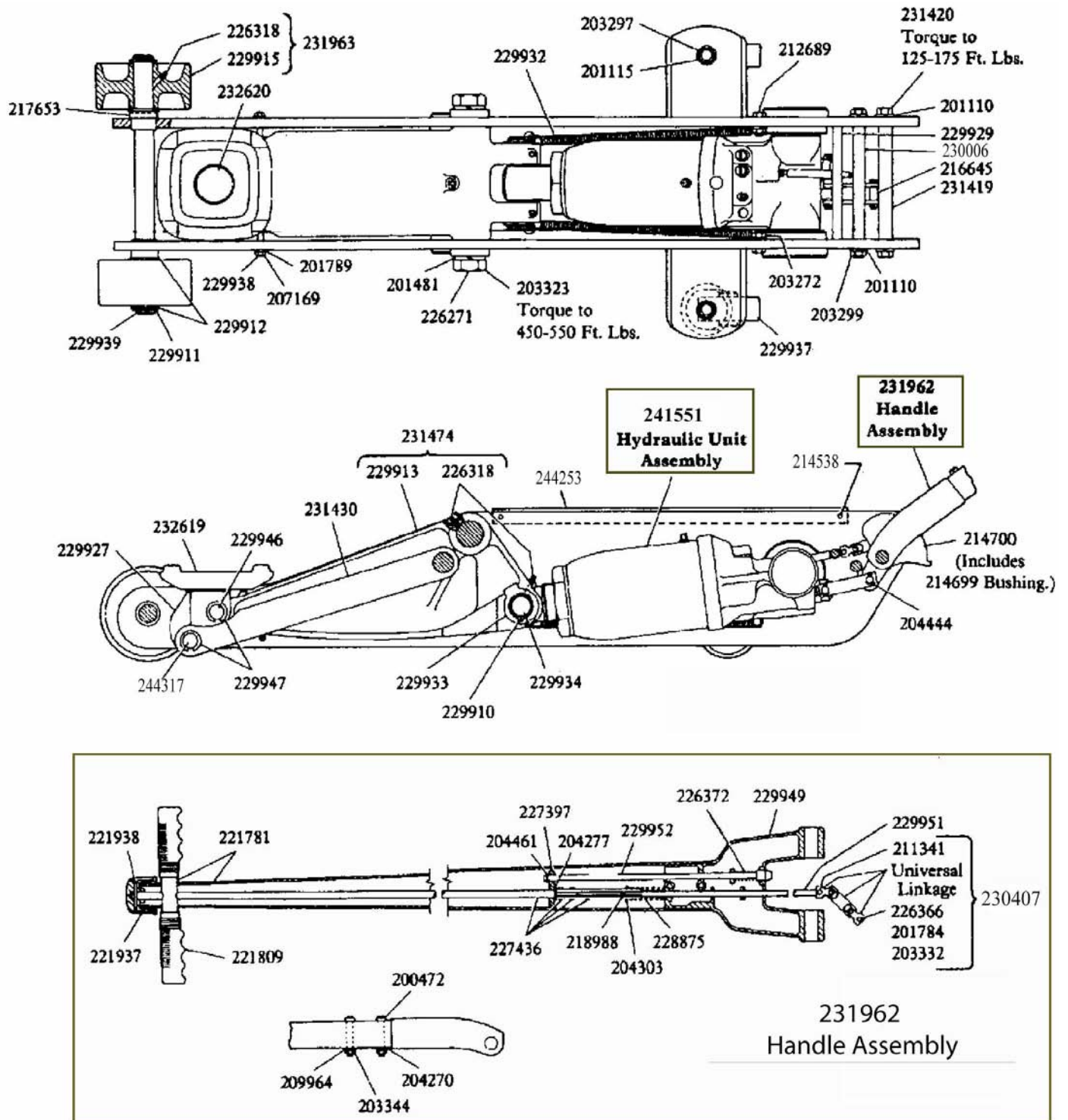
## Parts List for Model YA657B

| <u>Part#</u> | <u>Description</u>      | <u>Qty.</u> | <u>Part#</u> | <u>Description</u>      | <u>Qty.</u> | <u>Part#</u> | <u>Description</u>     | <u>Qty.</u> |
|--------------|-------------------------|-------------|--------------|-------------------------|-------------|--------------|------------------------|-------------|
| 200003 •     | Gasket                  | 1           | 221742       | Ball Stop Plug (3/4" L) | 1           | 230583       | Ram Assy.              | 1           |
| 200472       | Screw                   | 2           | 221764 •     | Ram Quad Ring           | 1           | 231316       | Vent Valve Assy.       | 1           |
| 201110       | Lockwasher              | 4           | 221766       | Cylinder                | 1           | 231583       | Rear Caster            | 2           |
| 201479       | Lockwasher              | 2           | 221770       | Low Pressure Pump       | 1           | 231638       | Filler Screw           | 1           |
| 201733       | Plug                    | 1           | 221771 •     | Washer                  | 1           | 231710       | Oil Tank               | 1           |
| 201779       | Lockwasher              | 2           | 221772 •     | Quad ring               | 1           | 232968 •     | Back-up Washer         | 1           |
| 201784       | Lockwasher              | 1           | 221778       | Washer                  | 4           | 232969 •     | U-cup                  | 1           |
| 201808       | Rivet                   | 2           | 221781       | Handle and Cross Bar    | 1           | 232970       | Pressure Pump          | 1           |
| 203198 •     | Ball (7/32" O.D.)       | 1           | 221798       | Retainer Ring           | 4           | 232971       | Pressure Pump Kit      | 1           |
| 203199 •     | Ball (1/4" O.D.)        | 1           | 221817       | Retainer Ring           | 2           | 233798       | Tank Nut               | 1           |
| 203200 •     | Ball (9/32" O.D.)       | 1           | 221823       | Parallel Link           | 2           | 233880       | Tank Nut and Quad Ring | 1           |
| 203201 •     | Ball (5/16" O.D.)       | 1           | 221829       | Pin                     | 1           | 233917 •     | Plastic Spring         | 1           |
| 203205 •     | Ball (7/16" O.D.)       | 1           | 221937       | Turning Knob            | 1           | 233921       | Release Stem           | 1           |
| 203299       | Jam Nut                 | 4           | 221938       | Roll Pin                | 1           | 234695       | Bellcrank Pim 3/4x3.38 | 1           |
| 203313       | Jam Nut                 | 2           | 222095       | Release Stem Kit        | 1           | 234696       | Parallel Link Pin      | 1           |
| 203332       | Nut                     | 1           | 222098       | Speed Pump Assy.        | 1           | 234976       | Cap Housing            | 1           |
| 203344       | Jam Nut                 | 2           | 222201 •     | Spring                  | 1           | 241885       | Bellcrank              | 1           |
| 204270       | Washer                  | 2           | 222257       | Plug Poppet Valve       | 2           | 241887       | Handle Socket          | 1           |
| 204277       | Washer                  | 1           | 222533 •     | Screen                  | 2           | 241889       | Liftcap                | 1           |
| 204301       | Washer                  | 1           | 223166 •     | Ram Screen              | 1           | 241893       | Sideplate Assy         | 1           |
| 204303       | Washer                  | 1           | 226314       | Gland Nut               | 1           | 241894       | Sideplate Assy         | 1           |
| 204343       | Washer                  | 4           | 226318       | Grease Fitting          | 1           | 241895       | Hydraulic Unit Cover   | 1           |
| 204372       | Washer                  | 1           | 226324       | Pressure Plug           | 1           | 241907       | Repair Kit (Hyd. Unit) | -           |
| 204444       | Cotter Pin              | 3           | 226325       | Pump Link               | 2           | 241982       | Fulcrum Pin            | 1           |
| 204461       | Cotter Pin              | 1           | 226326       | Nut                     | 1           | 241983       | Sideplate Tie Rod      | 2           |
| 204842 •     | Copper Gasket           | 1           | 226327       | Slotted Tube            | 1           | 241985       | Support Rod            | 1           |
| 209964       | Lockwasher              | 2           | 226329       | Pin                     | 1           | 241986       | Front Axle             | 1           |
| 210225       | Spacer                  | 1           | 226331 •     | Spring                  | 1           | 241987       | Retainer ring          | 2           |
| 210311       | Pipe Plug               | 3           | 226353 •     | Spring                  | 1           | 241988       | Handle Pivot Pin       | 1           |
| 210411 •     | Washer                  | 1           | 226366       | Hex Head Bolt           | 1           | 241989       | Extension Spring       | 2           |
| 211341       | Rivet                   | 1           | 226372       | Spring                  | 1           | 241990       | Handle Assy.           | 1           |
| 212227       | Release Valve           | 1           | 226615       | Front Wheel             | 2           | 241991       | Hydraulic Unit Casting | 1           |
| 213152 •     | Packing Ring            | 2           | 227395       | Plunger Assy.           | 1           | 241993       | Hydraulic Unit Assy.   | 1           |
| 213171 •     | Packing Ring            | 2           | 227397       | Release Link            | 1           |              |                        |             |
| 214538       | Groove Pin              | 4           | 227399       | Extension Rod           | 1           |              |                        |             |
| 214555 •     | O-ring                  | 1           | 227436       | Turning Rod Assy.       | 1           | YA657-K0     | Label Kit (not shown)  |             |
| 214699       | Bushing                 | 1           | 228257 •     | U-cup                   | 1           | YA657-M0     | Manual                 |             |
| 214700       | Handle Segment Assy.    | 1           | 228354       | Universal Assy.         | 1           |              |                        |             |
| 216645       | Pin                     | 1           | 228875       | Spring                  | 1           |              |                        |             |
| 216646       | Pump Pin                | 1           | 228881       | Grip                    | 2           |              |                        |             |
| 218988       | Roll Pin                | 1           | 229392       | Serial Plate            | 1           |              |                        |             |
| 219451       | Hex Nut                 | 2           | 229748 •     | Heel Plate              | 3           |              |                        |             |
| 220769       | Cross Pin               | 1           | 229749       | Washer                  | 1           |              |                        |             |
| 221739 •     | Poppet                  | 1           | 229750       | Ram                     | 1           |              |                        |             |
| 221740       | Ball Stop Plug(7/16" L) | 1           | 229751       | Pin                     | 1           |              |                        |             |

• Included in Repair Kit 241907



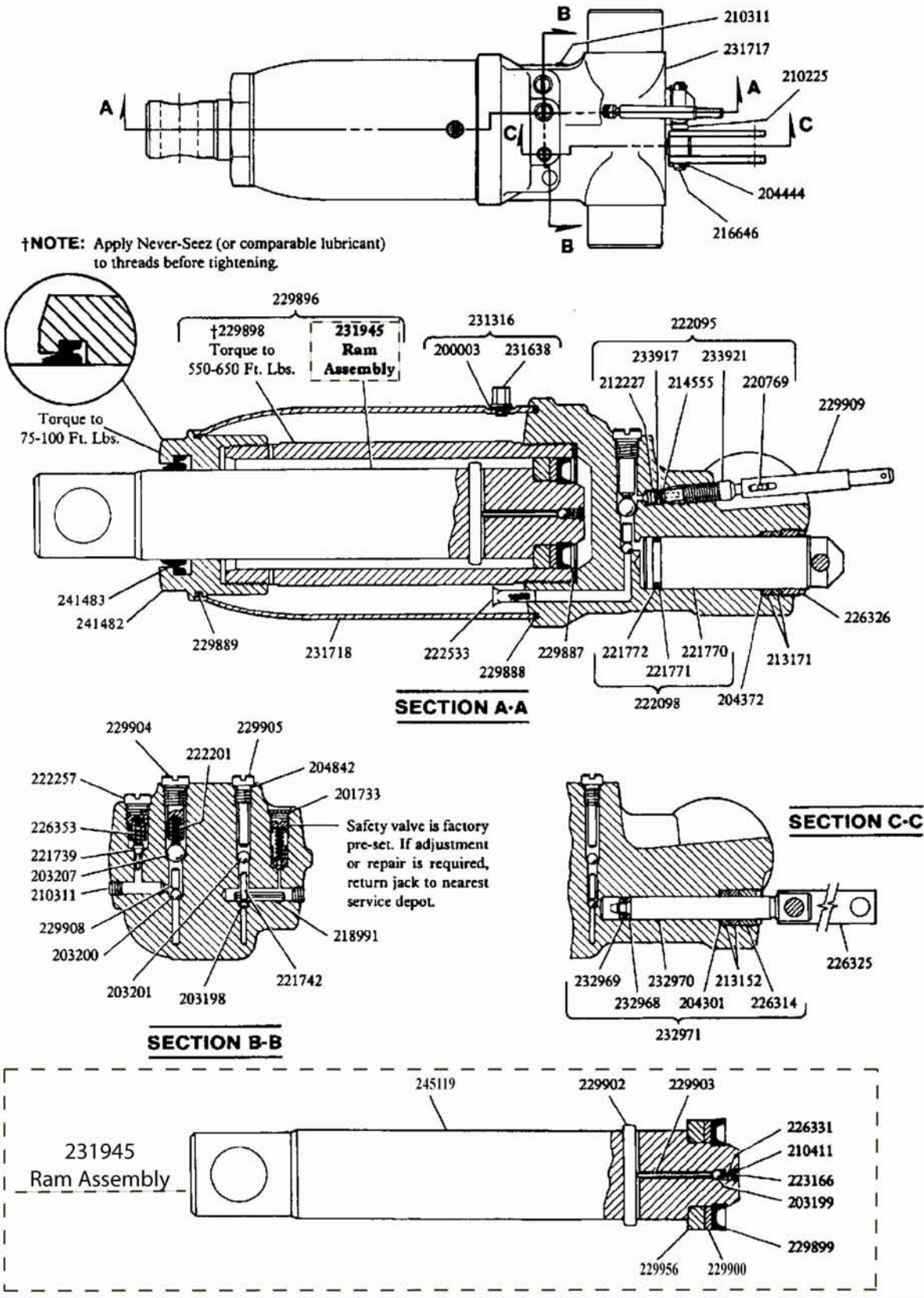
## Service Parts for Model YA660B





## Service Parts for Model YA660B (continued) - Hyd. Unit

### 241551 Hydraulic Unit Assembly



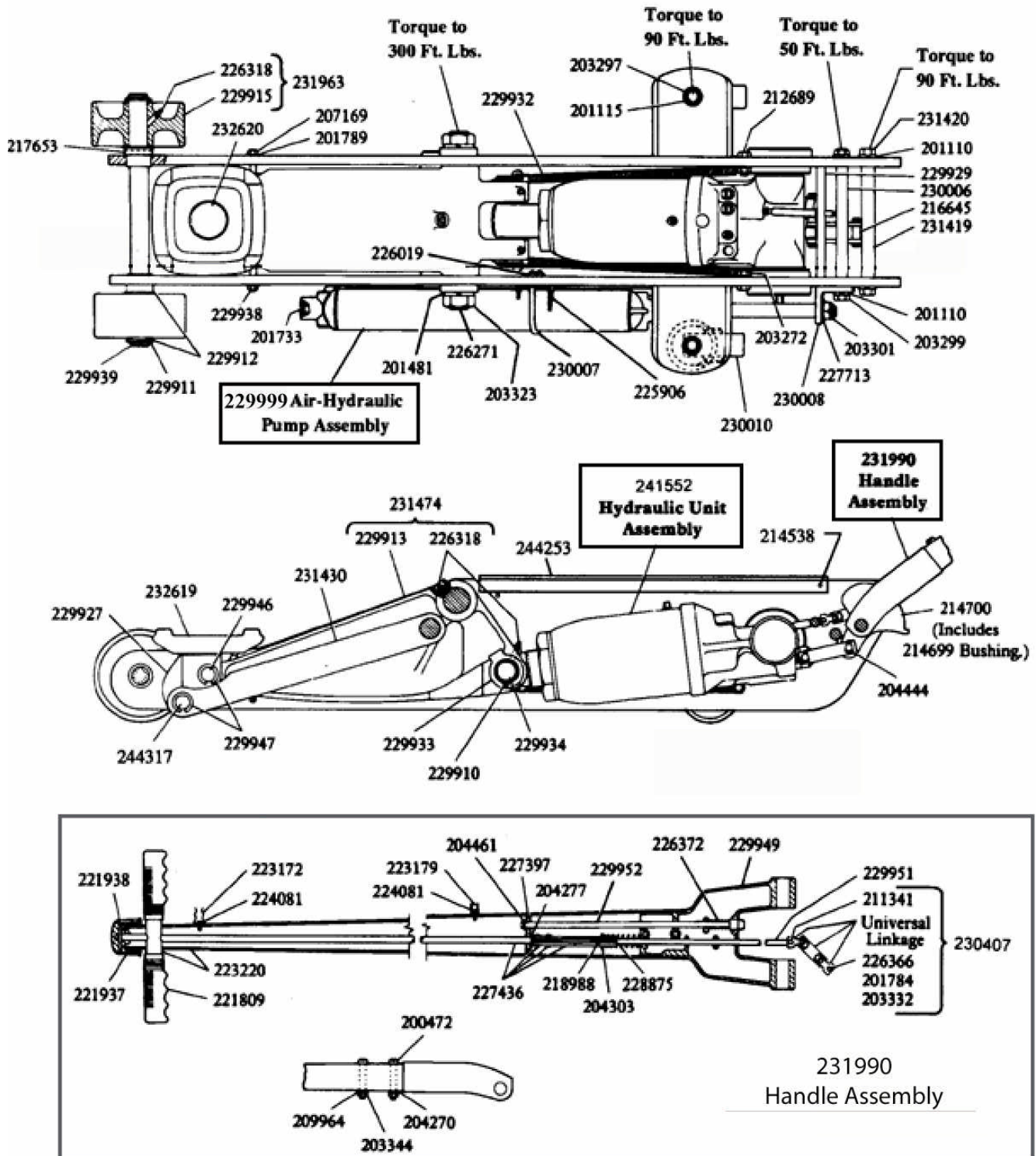


## Parts List for Model YA660B

| <u>Part#</u> | <u>Description</u>          | <u>Qty.</u> | <u>Part#</u> | <u>Description</u>   | <u>Qty.</u> | <u>Part#</u> | <u>Description</u>            | <u>Qty.</u> |
|--------------|-----------------------------|-------------|--------------|----------------------|-------------|--------------|-------------------------------|-------------|
| 200003       | Gasket                      | 1           | 220769       | Cross Pin            | 1           | 229927       | Cap Housing                   | 1           |
| 200472       | Bolt                        | 2           | 221739       | Poppet               | 1           | 229929       | Bearing                       | 1           |
| 201110       | Lockwasher                  | 4           | 221742       | Ball Stop Plug       | 1           | 229932       | Spring                        | 2           |
| 201115       | Lockwasher                  | 2           | 221770       | Speed Pump           | 1           | 229933       | Plate                         | 2           |
| 201481       | Lockwasher                  | 2           | 221771 •     | Back-up Washer       | 1           | 229934       | Pin                           | 1           |
| 201733       | Expansion Plug              | 1           | 221772       | Quad Ring            | 1           | 229937       | Caster                        | 2           |
| 201784       | Lockwasher                  | 1           | 221781       | Handle & Cross Bar   | 1           | 229938       | Pin                           | 1           |
| 201789       | Lockwasher                  | 2           | 221809       | Handle Grip          | 2           | 229939       | Front Axle                    | 1           |
| 203198 •     | Ball                        | 1           | 221937       | Release Knob         | 1           | 229946       | Pin                           | 1           |
| 203199 •     | Ball                        | 1           | 221938       | Roll Pin             | 1           | 229947       | Retaining Ring                | 4           |
| 203200 •     | Ball                        | 1           | 222095       | Release Stem Assy.   | 1           | 229949       | Handle Socket                 | 1           |
| 203201 •     | Ball                        | 1           | 222098       | Speed Pump Assy.     | 1           | 229951       | Extension rod                 | 1           |
| 203207 •     | Ball                        | 1           | 222201 •     | Spring               | 1           | 229952       | Plunger Assy.                 | 1           |
| 203272       | Nut                         | 2           | 222257       | Plug                 | 1           | 229956       | Heel Plate                    | 1           |
| 203297       | Nut                         | 2           | 222533 •     | Screen               | 2           | 230006       | Bumper Pin                    | 1           |
| 203299       | Nut                         | 2           | 223166 •     | Screen               | 1           | 230407       | Universal Assy.               | 1           |
| 203323       | Nut                         | 2           | 224253       | Cover                | 1           | 231316       | Filler Plug & Gasket Assy.    | 1           |
| 203332       | Nut                         | 1           | 226271       | Fulcrum Pin          | 1           | 231419       | Fulcrum Pin                   | 1           |
| 203344       | Nut                         | 2           | 226314       | Gland Nut            | 1           | 231420       | Bolt                          | 2           |
| 204270       | Washer                      | 2           | 226318       | Grease Fitting       | 5           | 231430       | Parallel Link                 | 2           |
| 204277       | Washer                      | 1           | 226325       | Pump Link            | 2           | 231474       | Bell Crank & Fittings         | 1           |
| 204301       | Washer                      | 1           | 226326       | Gland Nut            | 1           | 231638       | Filler Plug & Vent Valve      | 1           |
| 204303       | Washer                      | 1           | 226331       | Spring               | 1           | 231717       | Base                          | 1           |
| 204372       | Washer                      | 1           | 226353 •     | Spring               | 1           | 231718       | Oil Tank                      | 1           |
| 204444       | Cotter Pin                  | 4           | 226366       | Bolt                 | 1           | 231945       | Ram Assy.                     | 1           |
| 204461       | Cotter Pin                  | 1           | 226372       | Plunger Spring       | 1           | 231962       | Handle Assy.                  | 1           |
| 204842 •     | Gasket                      | 1           | 227397       | Link                 | 1           | 231963       | Front Wheel Assy.             | 2           |
| 207169       | Nut                         | 2           | 227436       | Turning Rod Assy.    | 1           | 232619       | Lifting Cap                   | 1           |
| 209964       | Lockwasher                  | 2           | 228875       | Spring               | 1           | 232620       | Swivel Pin                    | 1           |
| 210225       | Spacer                      | 1           | 229887 •     | O-ring               | 1           | 232968 •     | Back-up Washer                | 1           |
| 210311       | Pipe Plug                   | 3           | 229888 •     | O-ring               | 1           | 232969 •     | U-cup Packing                 | 1           |
| 210411 •     | Washer                      | 1           | 229889 •     | O-ring               | 1           | 232970       | Pressure Pump                 | 1           |
| 211341       | Rivet                       | 1           | 229896       | Ram & Cylinder Assy. | 1           | 232971       | Pressure Pump &               | 1           |
| 212227       | Release Valve               | 1           | 229898       | Cylinder             | 1           |              | Gland Packing Assy.           |             |
| 212689       | Bolt                        | 2           | 229899 •     | U-cup Packing        | 1           | 233917       | Plastic Spring                | 1           |
| 213152 •     | Packing Ring                | 2           | 229900 •     | Back-up Washer       | 1           | 233921       | Release Stem                  | 1           |
| 213171 •     | Packing Ring                | 2           | 229902       | Cross Pin            | 1           | 240616       | Repair Kit (Hyd. Unit)        | -           |
| 214538       | Groove Pin                  | 4           | 229903       | Pin                  | 1           | 241482       | Tank Nut                      | 1           |
| 214555 •     | O-ring                      | 1           | 229904       | Plug                 | 1           | 241483 •     | Seal                          | 1           |
| 214699       | Bushing                     | 1           | 229905       | Plug                 | 1           | 241551       | Hydraulic Unit Assy.          | 1           |
| 214700       | Handle Segment<br>& Bushing | 1           | 229908       | Spacer               | 1           | 244317       | Pin                           | 1           |
| 216645       | Pin                         | 1           | 229909       | Slotted Tube         | 1           | 245119       | Ram                           | 1           |
| 216646       | Pin                         | 1           | 229910       | Retaining Ring       | 2           |              |                               |             |
| 217653       | Roll Pin                    | 2           | 229911       | Retaining Ring       | 2           | YA660-K0     | Label Kit (not shown)         |             |
| 218988       | Roll Pin                    | 1           | 229912       | Washer               | 4           | YA657-M0     | Manual                        |             |
| 218991       | Roll Pin                    | 1           | 229913       | Bell Crank           | 1           |              |                               |             |
|              |                             |             | 229915       | Front Wheel          | 2           | •            | Included in Repair Kit 240616 |             |



## Service Parts for Model YA662B



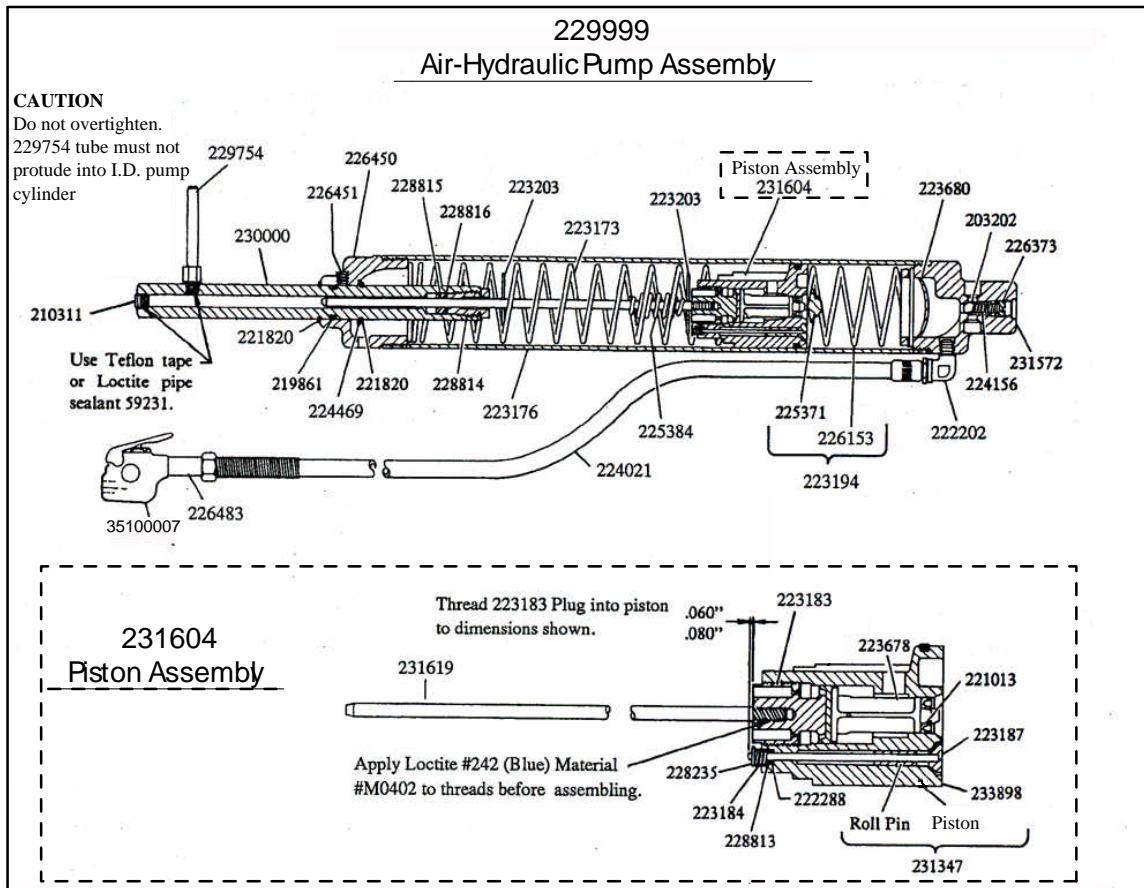


241552  
Hydraulic Unit Assembly





## Service Parts for Model YA662B (continued) - Air Hyd. Pump



### Parts List for Model YA662B

| Part#    | Description        | Qty | Part#    | Description   | Qty | Part#    | Description              | Qty |
|----------|--------------------|-----|----------|---------------|-----|----------|--------------------------|-----|
| 200003   | Gasket             | 1   | 203344   | Nut           | 2   | 214555 • | O-ring                   | 1   |
| 200472   | Bolt               | 2   | 204270   | Washer        | 2   | 214699   | Bushing                  | 1   |
| 201110   | Lockwasher         | 4   | 204277   | Washer        | 1   | 214700   | Handle Segment & Bushing | 1   |
| 201115   | Lockwasher         | 2   | 204301   | Washer        | 1   | 216645   | Pin                      | 1   |
| 201481   | Lockwasher         | 2   | 204303   | Washer        | 1   |          |                          |     |
| 201733   | Expansion Plug     | 1   | 204372   | Washer        | 1   | 216646   | Pin                      | 1   |
| 201784   | Lockwasher         | 1   | 204444   | Cotter Pin    | 4   | 217653   | Roll Pin                 | 2   |
| 201789   | Lockwasher         | 2   | 204461   | Cotter Pin    | 1   | 218988   | Roll Pin                 | 1   |
| 203198 • | Ball (7/32" O.D.)  | 1   | 204842 • | Gasket        | 1   | 218991   | Roll Pin                 | 1   |
| 203199 • | Ball (1/4" O.D.)   | 1   | 207169   | Nut           | 2   | 219861   | O-ring                   | 1   |
| 203200 • | Ball (9/32" O.D.)  | 1   | 209964   | Lockwasher    | 2   | 220769   | Coss Pin                 | 1   |
| 203201 • | Ball (5/16" O.D.)  | 1   | 210225   | Spacer        | 1   | 221013#  | U-cup Packing            | 1   |
| 203202   | Ball (11/32" O.D.) | 1   | 210311   | Pipe Plug     | 3   | 221739   | Poppet                   | 1   |
| 203207 • | Ball               | 1   | 210411 • | Washer        | 1   | 221742   | Ball Stop Plug           | 1   |
| 203272   | Nut                | 2   | 211341   | Rivet         | 1   | 221770   | Speed Pump               | 1   |
| 203297   | Nut                | 2   | 212227   | Release Valve | 1   | 221771 • | Back-up Washer           | 1   |
| 203299   | Nut                | 2   | 212689   | Bolt          | 2   | 221772   | Quad Ring                | 1   |
| 203301   | Jam Nut            | 1   | 213152 • | Packing Ring  | 2   | 221809   | Handle Grip              | 2   |
| 203323   | Nut                | 2   | 213171 • | Packing Ring  | 2   | 221820   | Retaining Ring           | 2   |
| 203332   | Nut                | 1   | 214538   | Groove Pin    | 4   | 221937   | Release Knob             | 1   |

...Continue on next page (page 14)



### **Parts List for Model YA662B (continued)**

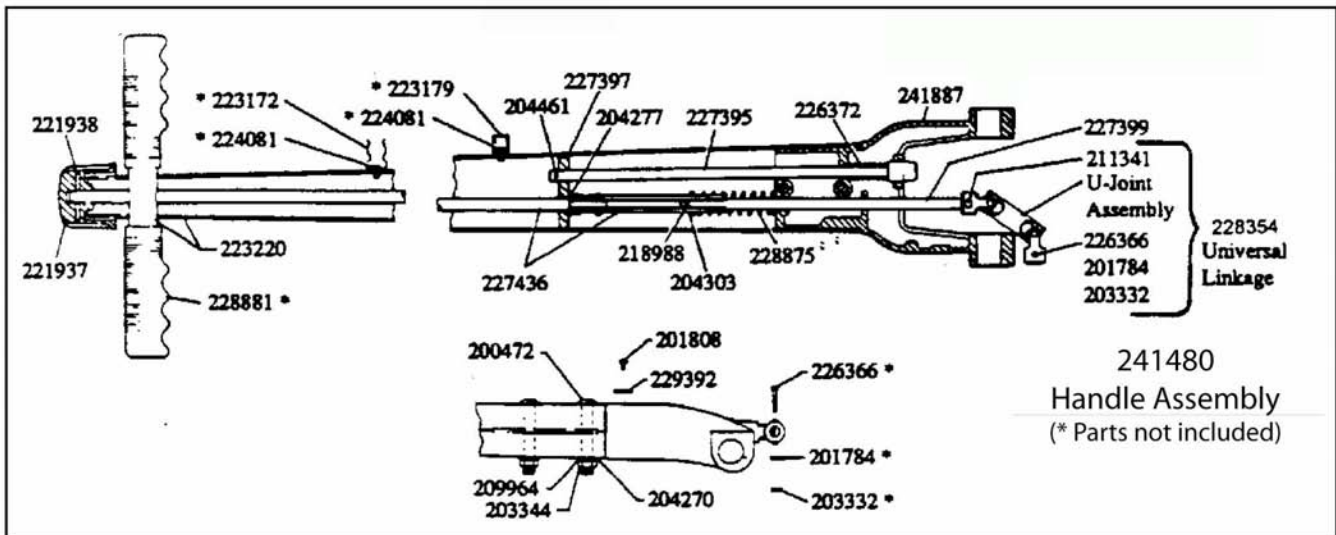
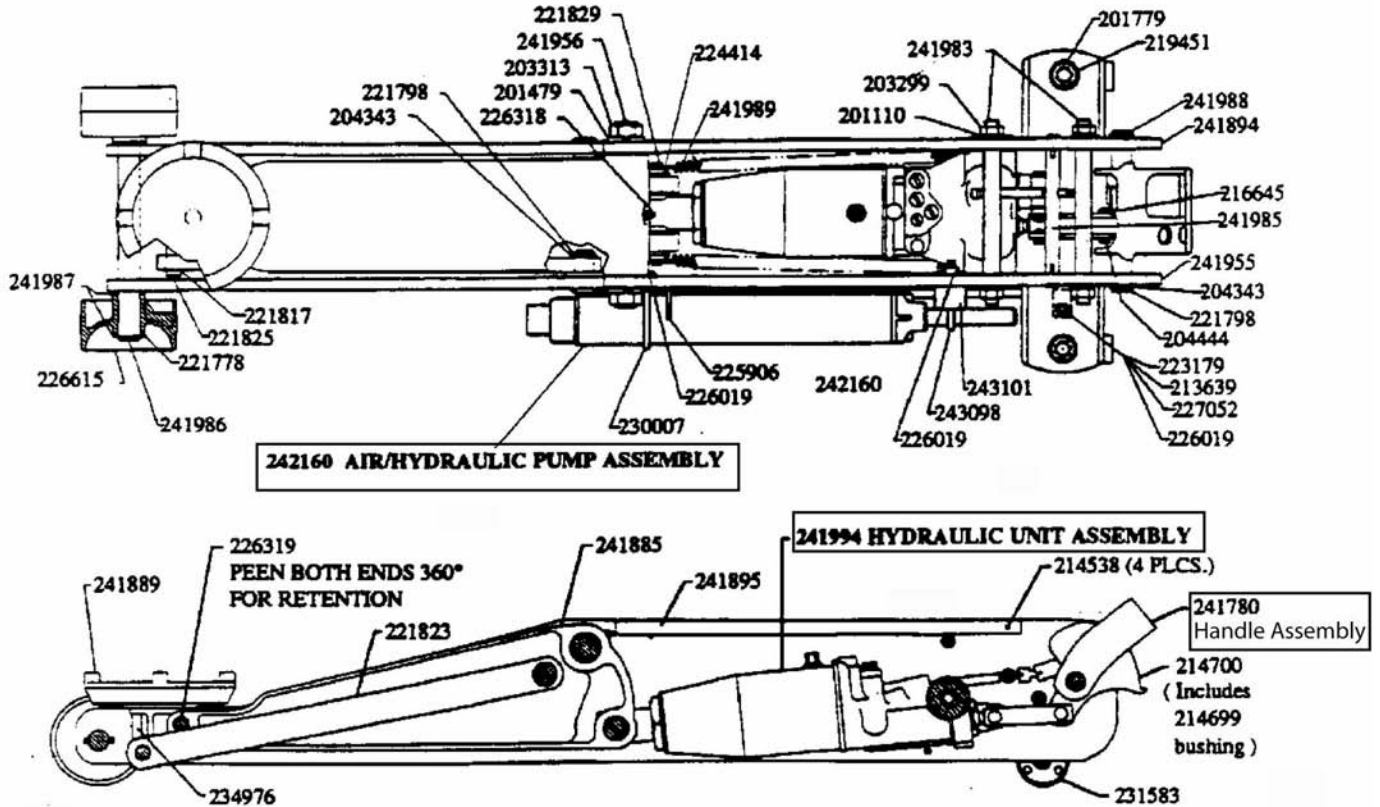
| <b><u>Part#</u></b> | <b><u>Description</u></b> | <b><u>Qty</u></b> | <b><u>Part#</u></b> | <b><u>Description</u></b> | <b><u>Qty</u></b> | <b><u>Part#</u></b> | <b><u>Description</u></b>           | <b><u>Qty</u></b> |
|---------------------|---------------------------|-------------------|---------------------|---------------------------|-------------------|---------------------|-------------------------------------|-------------------|
| 221938              | Roll Pin                  | 1                 | 227713              | Lockwasher                | 1                 | 230008              | Bracket                             | 1                 |
| 222095              | Release Stem Assy.        | 1                 | 228235              | Cotter Pin                | 1                 | 230010              | Caster                              | 2                 |
| 222098              | Speed Pump Assy.          | 1                 | 228813              | Washer                    | 1                 | 230011              | Spacer                              | 1                 |
| 222201 •            | Spring                    | 1                 | 228814#             | Gland Nut                 | 1                 | 230407              | Universal Assy.                     | 1                 |
| 222202              | Elbow                     | 1                 | 228815#             | U-cup Packing             | 1                 | 231316              | Filler Plug & Gasket Assy.          | 1                 |
| 222257              | Plug                      | 1                 | 228816#             | Washer                    | 1                 | 231347              | Piston & Roll Pin                   | 1                 |
| 222288#             | O-ring                    | 1                 | 228875              | Spring                    | 1                 | 231419              | Fulcrum Pin                         | 1                 |
| 222533 •            | Screen                    | 2                 | 229754              | Pin                       | 1                 | 231420              | Bolt                                | 2                 |
| 223166 •            | Screen                    | 1                 | 229887 •            | O-ring                    | 1                 | 231430              | Parallel Link                       | 2                 |
| 223172              | Hose Clip                 | 1                 | 229888 •            | O-ring                    | 1                 | 231474              | Bell Crank & Fittings               | 1                 |
| 223173              | Return Spring             | 1                 | 229889 •            | O-ring                    | 1                 | 231572              | Cylinder Cap                        | 1                 |
| 223176              | Cylinder, Air             | 1                 | 229896              | Ram & Cylinder Assy.      | 1                 | 231604              | Piston Assy.                        | 1                 |
| 223179              | Hose Clip                 | 2                 | 229898              | Cylinder                  | 1                 | 231619              | Rod, Pump                           | 1                 |
| 223183              | Plug                      | 1                 | 229899 •            | U-cup Packing             | 1                 | 231638              | Filler plug & Vent Valve            | 1                 |
| 223184              | Spring                    | 1                 | 229900 •            | Back-up Washer            | 1                 | 231717              | Base                                | 1                 |
| 223187#             | Valve & Plunger           | 1                 | 229902              | Cross Pin                 | 1                 | 231718              | Oil Tank                            | 1                 |
| 223194              | Spring & Cushion          | 1                 | 229903              | Pin                       | 1                 | 231945              | Ram Assy.                           | 1                 |
| 223203              | Trip Washer               | 2                 | 229904              | Plug                      | 1                 | 231963              | Front Wheel Assy.                   | 2                 |
| 223220              | Handle & Cross Bar        | 1                 | 229905              | Plug                      | 1                 | 231990              | Handle Assy.                        | 1                 |
| 223678              | Packing & Piston          | 1                 | 229908              | Spacer                    | 1                 | 232619              | Lifting Cap                         | 1                 |
| 223680              | Screen                    | 1                 | 229909              | Slotted Tube              | 1                 | 232620              | Swivel Pin                          | 1                 |
| 224021              | Hose, Air                 | 1                 | 229910              | Retaining Ring            | 2                 | 232968 •            | Back-up Washer                      | 1                 |
| 224081              | Screw                     | 2                 | 229911              | Retaining Ring            | 2                 | 232969 •            | U-cup Packing                       | 1                 |
| 224156              | Spring                    | 1                 | 229912              | Washer                    | 4                 | 232970              | Pressure Pump                       | 1                 |
| 224469              | Washer                    | 1                 | 229913              | Bell Crank                | 1                 | 232971              | Pressure Pump & Gland Packing Assy. | 1                 |
| 225371              | Rubber Cushion            | 1                 | 229915              | Front Wheel               | 2                 | 233110              | Pump U-cup                          | 1                 |
| 225384              | Trip Spring               | 1                 | 229927              | Cap Housing               | 1                 | 233622              | Screw                               | 4                 |
| 225906              | Bracket, Speed pak        | 1                 | 229929              | Bearing                   | 1                 | 233897              | Ring, Sealing                       | 1                 |
| 226153              | Spring                    | 1                 | 229932              | Spring                    | 2                 | 233917              | Plastic Spring                      | 1                 |
| 226271              | Fulcrum Pin               | 1                 | 229933              | Plate                     | 2                 | 233921              | Release Stem                        | 1                 |
| 226314              | Gland Nut                 | 1                 | 229934              | Pin                       | 1                 | 240564              | Repair Kit (Air Pump) -             |                   |
| 226318              | Grease Fitting            | 5                 | 229938              | Pin                       | 1                 | 240616              | Repair Kit (Hyd. Unit) -            |                   |
| 226325              | Pump Link                 | 2                 | 229939              | Front Axle                | 1                 | 241482              | Tank Nut                            | 1                 |
| 226326              | Gland Nut                 | 1                 | 229946              | Pin                       | 1                 | 241483 •            | Seal                                | 1                 |
| 226331              | Spring                    | 1                 | 229947              | Retaining Ring            | 4                 | 241552              | Hydraulic Unit Assy.                | 1                 |
| 226353 •            | Spring                    | 1                 | 229949              | Handle Socket             | 1                 | 244253              | Cover                               | 1                 |
| 226366              | Bolt                      | 1                 | 229951              | Extension Rod             | 1                 | 244317              | Pin                                 | 1                 |
| 226372              | Plunger Spring            | 1                 | 229952              | Plunger Assy.             | 1                 | 245119              | Ram                                 | 1                 |
| 226373              | Adjusting Screw           | 1                 | 229956              | Heel Plate                | 1                 | 35100007            | Air Valve                           | 1                 |
| 226401              | Spring                    | 1                 | 229999              | Air Hyd. Pump Assy.       | 1                 | YA662-K0            | Label Kit (not shown) -             |                   |
| 226450              | End Block                 | 1                 | 230000              | Pump Cylinder             | 1                 | YA657-M0            | Manual                              | -                 |
| 226451              | Set Screw                 | 2                 | 230003              | Back-up Washer            | 1                 |                     |                                     |                   |
| 226483              | Pipe Nipple               | 1                 | 230005              | Gland Nut                 | 1                 |                     |                                     |                   |
| 227397              | Link                      | 1                 | 230006              | Bumper Pin                | 1                 |                     |                                     |                   |
| 227436              | Turning Rod Assy.         | 1                 | 230007              | U-bolt                    | 1                 |                     |                                     |                   |

• Included in Repair Kit 240616

# Included in Repair Kit 240564



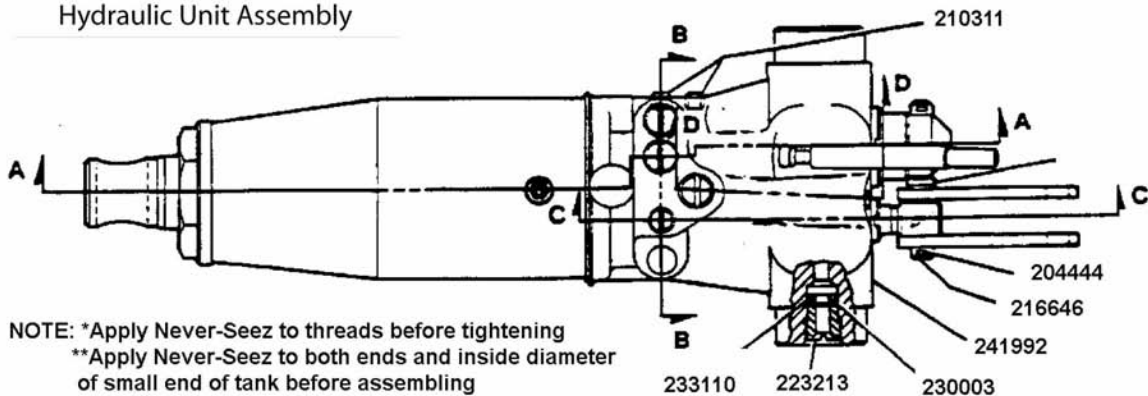
## Service Parts for Model YA667B





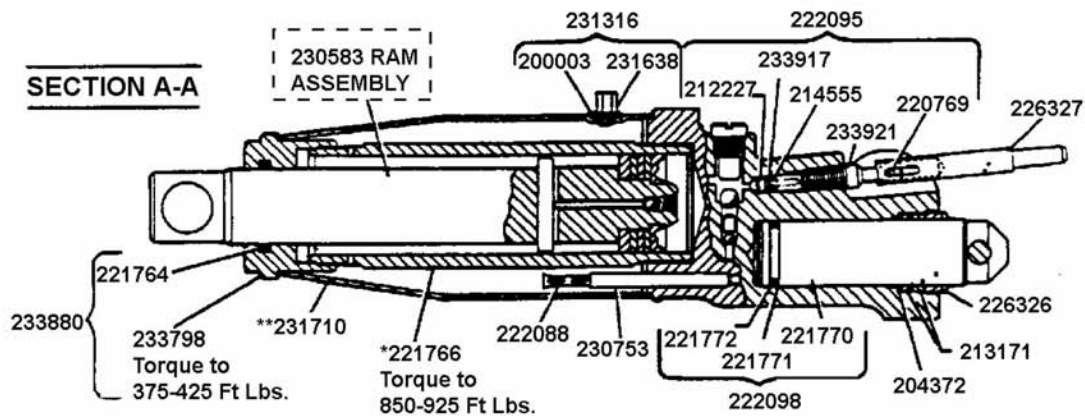
## Service Parts for Model YA667B(continued) - Hyd. Unit

241994  
Hydraulic Unit Assembly

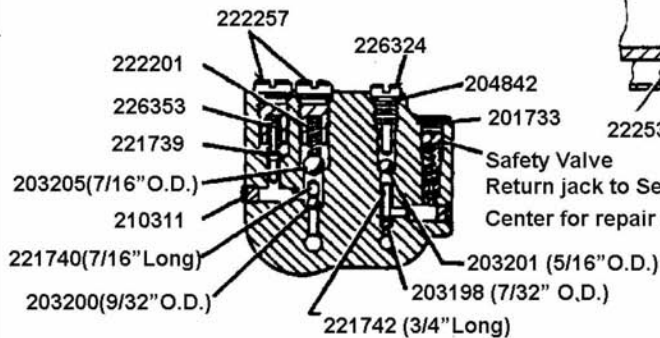


NOTE: \*Apply Never-Seez to threads before tightening  
 \*\*Apply Never-Seez to both ends and inside diameter of small end of tank before assembling

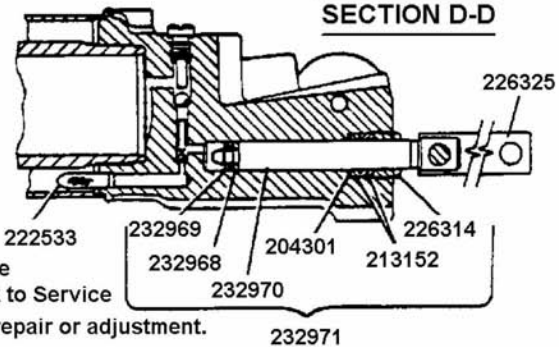
**SECTION A-A**



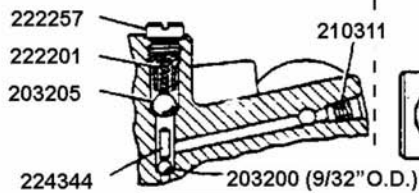
**SECTION B-B**



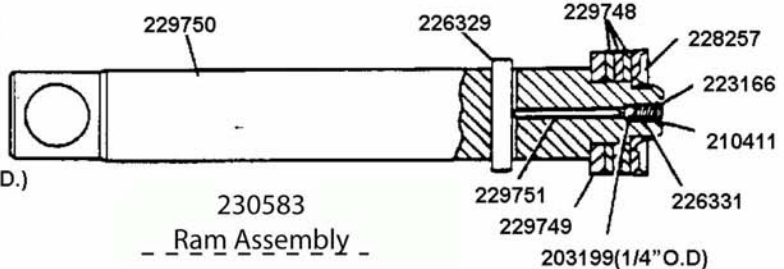
**SECTION D-D**



**SECTION C-C**

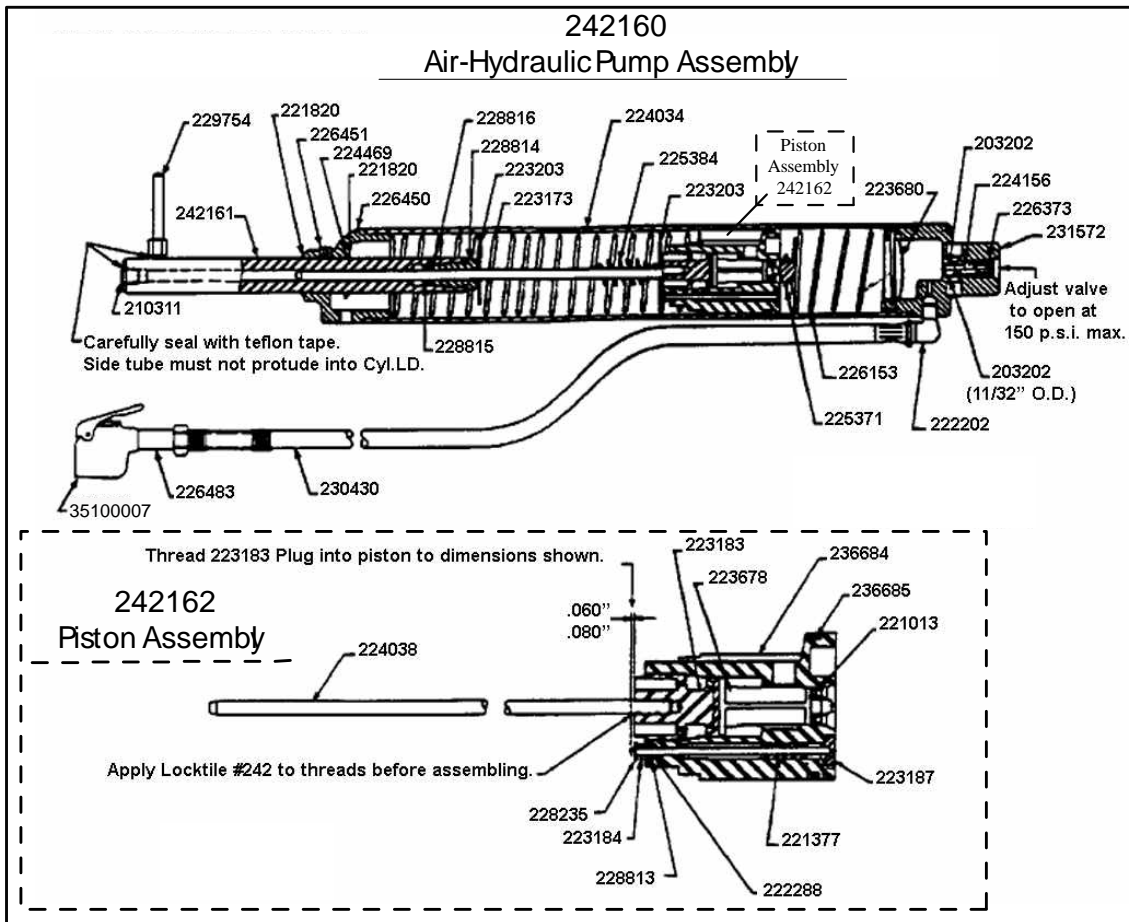


**230583  
Ram Assembly**





## Service Parts for Model YA667B(continued) - Air Hyd. Pump



### Parts List for Model YA667B

| <u>Part#</u> | <u>Description</u> | <u>Qty</u> | <u>Part#</u> | <u>Description</u>   | <u>Qty</u> | <u>Part#</u> | <u>Description</u>       | <u>Qty</u> |
|--------------|--------------------|------------|--------------|----------------------|------------|--------------|--------------------------|------------|
| 200003 •     | Gasket             | 1          | 204301       | Washer               | 1          | 216645       | Pin                      | 1          |
| 200472       | Screw              | 2          | 204303       | Washer               | 1          | 216646       | Pump Pin                 | 1          |
| 201110       | Lockwasher         | 4          | 204343       | Washer               | 4          | 218988       | Roll Pin                 | 1          |
| 201479       | Lockwasher         | 2          | 204372       | Washer               | 1          | 219451       | Hex Nut                  | 2          |
| 201733       | Plug               | 1          | 204444       | Cotter Pin           | 3          | 220769       | Cross Pin                | 1          |
| 201779       | Lockwasher         | 2          | 204461       | Cotter Pin           | 1          | 221013#      | U-cup Packing            | 1          |
| 201784       | Lockwasher         | 1          | 204842 •     | Copper Gasket        | 1          | 221377       | Roll Pin                 | 1          |
| 201808       | Rivet              | 2          | 209964       | Lockwasher           | 2          | 221739 •     | Poppet                   | 1          |
| 203198 •     | Ball (7/32" O.D.)  | 1          | 210225       | Spacer               | 1          | 221740       | Ball Stop Plug (7/16" L) | 1          |
| 203199 •     | Ball (1/4" O.D.)   | 1          | 210311       | Pipe Plug            | 4          | 221742       | Ball Stop Plug (3/4" L)  | 1          |
| 203200 •     | Ball (9/32" O.D.)  | 1          | 210411 •     | Washer               | 1          | 221764 •     | Ram Quad Ring            | 1          |
| 203201 •     | Ball (5/16" O.D.)  | 1          | 211341       | Rivet                | 1          | 221766       | Cylinder                 | 1          |
| 203202       | Ball (11/32" O.D.) | 1          | 212227       | Release Valve        | 1          | 221770       | Low Pressure Pump        | 1          |
| 203205 •     | Ball (7/16" O.D.)  | 1          | 213152 •     | Packing Ring         | 2          | 221771 •     | Washer                   | 1          |
| 203299       | Jam Nut            | 4          | 213171 •     | Packing Ring         | 2          | 221772 •     | Quad ring                | 1          |
| 203313       | Jam Nut            | 2          | 213639       | Bolt                 | 1          | 221778       | Washer                   | 2          |
| 203332       | Nut                | 1          | 214538       | Groove Pin           | 4          | 221798       | Retainer Ring            | 4          |
| 203344       | Jam Nut            | 2          | 214555 •     | O-ring               | 1          | 221817       | Retainer Ring            | 2          |
| 204270       | Washer             | 2          | 214699       | Bushing              | 1          | 221820       | Retaining Ring           | 1          |
| 204277       | Washer             | 1          | 214700       | Handle segment Assy. | 1          | 221823       | Parallel Link            | 2          |

...Continue on next page (page 18)



### Parts List for Model YA667B (continued)

| <u>Part#</u> | <u>Description</u> | <u>Qty</u> | <u>Part#</u> | <u>Description</u>   | <u>Qty</u> | <u>Part#</u> | <u>Description</u>       | <u>Qty</u> |
|--------------|--------------------|------------|--------------|----------------------|------------|--------------|--------------------------|------------|
| 221825       | Parallel Link Pin  | 1          | 226353 •     | Spring               | 1          | 233917 •     | Plastic Spring           | 1          |
| 221829       | Pin                | 1          | 226366       | Hex Head Bolt        | 1          | 233921       | Release stem             | 1          |
| 221937       | Turning Knob       | 1          | 226372       | Spring               | 1          | 234976       | Cap Housing              | 1          |
| 221938       | Roll Pin           | 1          | 226373       | Adjusting Screw      | 1          | 236684       | Piston                   | 1          |
| 222088       | Screen Assembly    | 1          | 226450       | End block            | 1          | 236685       | Sealing ring             | 1          |
| 222095       | Release Stem Kit   | 1          | 226451       | Set Screw            | 2          | 240564       | Repair Kit (Hyd. Pump)   | 1          |
| 222098       | Speed Pump Assy.   | 1          | 226483       | Pipe Nipple          | 1          | 241780       | Handle                   | 1          |
| 222201 •     | Spring             | 1          | 226615       | Front Wheel          | 2          | 241885       | Bellcrank                | 1          |
| 222202       | Elbow              | 1          | 227052       | Washer               | 1          | 241887       | Handle Socket            | 1          |
| 222257       | Plug Poppet Valve  | 2          | 227395       | Plunger Assy.        | 1          | 241889       | Liftcap                  | 1          |
| 222288#      | O-ring             | 1          | 227397       | Release Link         | 1          | 241894       | Sideplate Assy           | 1          |
| 222533 •     | Screen             | 2          | 227399       | Extension Rod        | 1          | 241895       | Hydraulic Unit Cover     | 1          |
| 223166 •     | Ram Screen         | 1          | 227436       | Turning Rod Assy.    | 1          | 241907       | Repair Kit (Hyd. Unit) - |            |
| 223172       | Hose Clip          | 1          | 228235       | Cotter Pin           | 1          | 241955       | Sideplate Assy           | 1          |
| 223173       | Return Spring      | 1          | 228257 •     | U-cup                | 1          | 241956       | Fulcrum Pin              | 1          |
| 223179       | Hose Clip          | 2          | 228354       | Universal Linkage    | 1          | 241983       | Sideplate Tie Rod        | 2          |
| 223183       | Plug               | 1          | 228813       | Washer               | 1          | 241985       | Support Rod              | 1          |
| 223184       | spring             | 1          | 228814#      | Glant Nut            | 1          | 241986       | Front Axle               | 1          |
| 223187#      | Valve & Plunger    | 1          | 228815#      | u-cup Packing        | 1          | 241987       | Retainer ring            | 4          |
| 223203       | Trip Washer        | 2          | 228816#      | Washer               | 1          | 241988       | Handle Pivot Pin         | 1          |
| 223213       | Gland Nut          | 1          | 228875       | Spring               | 1          | 241989       | Extension spring         | 2          |
| 223220       | Handle & Cross Bar | 1          | 228881       | Grip                 | 2          | 241992       | Hydraulic Unit Casting   | 1          |
| 223678       | Packing & Piston   | 1          | 229392       | Serial plate         | 1          | 241994       | Hydraulic Unit Assy.     | 1          |
| 223680       | Screen             | 1          | 229748 •     | Heel Plate           | 3          | 242160       | Air Hyd. Pump Assy.      | 1          |
| 224034       | Air Cylinder       | 1          | 229749       | Washer               | 1          | 242161       | Pump Cylinder            | 1          |
| 224038       | Pump Rod           | 1          | 229750       | Ram                  | 1          | 242162       | Piston Assy              | 1          |
| 224081       | Screw              | 3          | 229751       | Pin                  | 1          | 243098       | U-bolt                   | 1          |
| 224156       | Spring             | 1          | 229754       | Extension tube       | 1          | 243101       | Sleeve                   | 1          |
| 224344       | Ball Stop Plug     | 1          | 230003 •     | Back-up Washer       | 1          | 35100007     | Air Valve                | 1          |
| 224414       | Retaining Ring     | 1          | 230007       | U-bolt               | 1          |              |                          |            |
| 224469       | Washer             | 1          | 230430       | Air Hose Assy.       | 1          | YA667-K0     | Label Kit (not shown)    |            |
| 225371       | Rubber Cushion     | 1          | 230583       | Ram Assy.            | 1          | YA657-M0     | Manual                   |            |
| 225384       | Trip Spring        | 1          | 230753       | Suction Tube         | 1          |              |                          |            |
| 225906       | Bracket, Speed pak | 1          | 231316       | Vent Valve Assy.     | 1          |              |                          |            |
| 226019       | Lock Nut           | 4          | 231572       | Cylinder Cap         | 1          |              |                          |            |
|              |                    |            |              |                      |            |              |                          |            |
| 226153       | Spring             | 1          | 231583       | Rear Caster          | 2          |              |                          |            |
| 226314       | Gland Nut          | 1          | 231638       | Filler Screw         | 1          |              |                          |            |
| 226318       | Grease fitting     | 1          | 231710       | Oil Tank             | 1          |              |                          |            |
| 226319       | Bellcrank Pin      | 1          | 232968 •     | Back-up Washer       | 1          |              |                          |            |
| 226324       | Pressure Plug      | 1          | 232969 •     | U-cup                | 1          |              |                          |            |
|              |                    |            |              |                      |            |              |                          |            |
| 226325       | Pump Link          | 2          | 232970       | Pressure Pump        | 1          |              |                          |            |
| 226326       | Nut                | 1          | 232971       | Pressure Pump Kit    | 1          |              |                          |            |
| 226327       | Slotted tube       | 1          | 233110       | Pump U-cup           | 1          |              |                          |            |
| 226329       | Pin                | 1          | 233798       | Tank Nut             | 1          |              |                          |            |
| 226331 •     | Spring             | 1          | 233880       | Tank Nut & Quad Ring | 1          |              |                          |            |



---

## LIMITED WARRANTY STATEMENT

Snap-on Tools warrants this product to be free from defects in material and workmanship for a period of 1 year from date of purchase. This warranty applies to the original purchaser (end user) only and is not transferable. Damaged components and assemblies i.e. bent ram and pump pistons, dented reservoirs, cracked or altered components, are the result of misuse, misapplication or a combination of both. These conditions will not be considered for warranty credit. We have complete confidence that the Snap-on product you purchase will meet or exceed your performance requirement. However in the unlikely event that a Snap-on product fails due to material or workmanship defect within the warranty period you may contact your retailer for disposition or you may contact an Authorized Service Center listed in the product owner's manual. Except where such limitations and exclusions are specifically prohibited by law, the consumer's sole and exclusive remedy shall be the repair or replacement of the defective product. Snap-on shall not be liable for any consequential or incidental damage or loss whatsoever, and the duration of any and all expressed and implied warranties, including without limitation, any warranties of merchantability and fitness for a particular purpose, is limited to a period of 1 year from date of purchase. Some States do not allow the exclusion or limitation of incidental or consequential damages, so the above may not apply to you. This warranty gives you specific legal rights. You may also have other rights which vary from state to state.

---



***Blue-Point®***

# memo.

[illegible]