



MODEL YA1731A 22 TON CAPACITY AIR ACTUATED AXLE JACK

OWNER/OPERATOR MANUAL

SAFETY INSTRUCTIONS

For your safety, *read, understand, and follow* the information provided with and on this axle jack. The owner and operator of this equipment shall have an understanding of this axle jack and safe operating procedures before attempting to use. The owner and operator shall be aware that use and repair of this product may require special skills and knowledge. Instructions and safety information shall be conveyed in the operator's native language before use of this jack is authorized. If any doubt exists as to the safe and proper use of this axle jack, remove from service immediately.

Inspect before each use. Do not use if there are broken, bent, cracked, or damaged parts (including labels). Any jack that appears damaged in any way, operates abnormally or is missing parts, shall be removed from service immediately. If the axle jack has been or suspected to have been subjected to a shock load (a load dropped suddenly, unexpectedly upon it), immediately discontinue to use until the axle jack has been inspected by a Snap-on authorized service center. It is recommended that an annual inspection be done by qualified personnel. Labels and Operator's Manual are available from manufacturer.

PRODUCT DESCRIPTION

Blue-Point Air Actuated Hydraulic Axle Jack is designed to lift, but not sustain, rated capacity loads. It is designed to be used vertically. After lifting, loads must be **immediately** supported by appropriate mechanical means (as opposed to hydraulic means), such as vehicle stands. This jack is **not appropriate** for use in lifting or positioning construction trailers, mobile homes, houses and/or other building structures. Ensure that your air source can dedicate 7.8 CFM @ 110-175 PSI to each jack operated. A minimum of 150 PSI air pressure is required to raise rated capacity load.

BEFORE USE

1. Inspect the jack before each use. Do not use if there are bent, broken or cracked components (including labels).
2. Ensure that product and application are compatible.
3. Read the operator's manual completely and familiarize yourself thoroughly with the product, its components and recognize the potential hazards associated with its use **before** using this product.
4. With ram fully retracted, locate and remove the oil filler screw. This will help release any pressurized air which may be trapped within the reservoir.
5. Ensure that oil level is just below the oil filler screw hole.
6. Reinstall the oil filler screw.
7. Pour a teaspoon of good quality air tool lubricant, such as #630-AAA Lubriplate, into the air supply inlet of the lift control valve.
8. Connect to air supply and operate for 3 seconds to evenly distribute lubricant.
9. Ensure that the jack rolls freely and that the air pump operates smoothly before putting into service. Replace worn or damaged parts and assemblies with Snap-on Authorized Replacement Parts only.
10. This jack is equipped with a 1/4" PT air coupler. When installing a different air coupler of your choice, ensure that thread tape or compound is used on connections.

Note: To ensure dependable, trouble free operation, an inline air dryer and oiler is recommended.

WARNING

- Study, understand, and follow all instructions provided with and on this device before operating this device.
- Do not exceed rated capacity.
- Use only on hard, level surfaces capable of sustaining rated capacity loads.
- This is a lifting device only.
- Never wire, clamp or otherwise disable the lift control valve to function other than by operator's hand.
- Immediately after lifting, support the vehicle with appropriate means such as jack stands.
- Do not modify or alter this device.
- Lift only on areas of the vehicle as specified by the vehicle manufacturer.
- Only attachments and/or adapters supplied by the manufacturer shall be used.
- Do not use the device for any purpose other than that for which it is intended.
- Failure to heed these markings may result in personal injury and/or property damage.

ADVERTENCIA

- Esta es una simple advertencia. Por favor lea las instrucciones y advertencias en inglés

OPERATION

Lifting

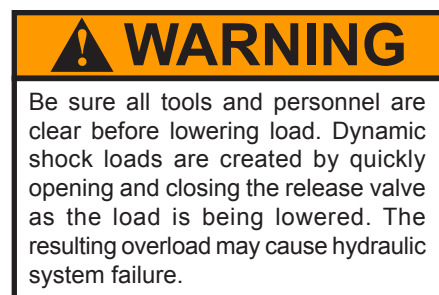
⚠ Caution! Use only saddle extenders (if equipped) provided and recommended by the manufacturer of the jack. Lift only on the vehicle manufacturer's recommended lift points and in accordance with the published guidelines in your vehicle owners manual. Always use jack stands to support the load immediately after lifting.

1. Assemble handle, see replacement parts illustration as guide. Secure with provided bolt to prevent inadvertent removal.
2. Connect to adequate air source.
3. Use wheel chocks to help prevent inadvertent shifting and movement of vehicle being lifted.
4. Position the jack near lift point. Consult vehicle service manual for the location of recommended lift points.
5. Close the release valve by turning the handle knob, clockwise until it is firmly closed.
6. Squeeze the lift control valve until saddle contacts load. Check to ensure proper saddle/lift point alignment. To end cycle, simply release the grip on the lift control valve.
7. Raise load to desired height, then immediately transfer the load to appropriately rated support devices such as jack stands.



Lowering

1. Raise load high enough to clear the jack stands, then carefully remove jack stands (**always** used in pairs).
2. Slowly turn the handle mounted release valve knob, counter-clockwise, but no more than 1/2 turn. If the load fails to lower:
 - a. Use another jack to raise the vehicle high enough to reinstall jack stands.
 - b. Remove the affected jack and then the stands.
 - c. Using the other jack, lower the load by turning the operating handle counter-clockwise, but no more than 1/2 turn.



MAINTENANCE

Important: Use only a good grade hydraulic jack oil. Avoid mixing different types of fluid and NEVER use brake fluid, turbine oil, transmission fluid, motor oil or glycerin. Improper fluid can cause premature failure of the jack and the potential for sudden and immediate loss of load. We recommend Mobil DTE 13M or equivalent.

Adding oil

1. With saddle fully lowered and pump piston fully depressed, set jack in its upright, level position, remove oil filler plug. It may be necessary to remove cover plate on same models.
2. Fill with oil until just below the rim of the oil filler screw hole. Reinstall the oil filler screw.

Changing oil

For best performance, replace the complete fluid supply at least once per year.

1. With saddle fully lowered, remove the oil filler screw.
2. Lay the jack on its side and drain the fluid into a suitable container.
3. Fill with oil until just below the rim of the oil filler screw hole.
4. Reinstall the oil filler screw.

Note: Dispose of hydraulic fluid in accordance with local regulations.

Lubrication

1. A periodic coating of light lubricating oil to pivot points, axles and hinges will help to prevent rust and assure that wheels and pump assemblies move freely.
2. When used on a daily basis, air pump should be internally lubricated before each use. Use **only** good quality air tool lubricant. If no inline oiler is used, pour a teaspoon of air tool oil into the inlet of the air control valve. Operate the jack using the air pressure to fully distribute the oil inside the air motor.

Cleaning

Periodically inspect the ram for signs of rust or corrosion. Clean as needed and wipe with an oily cloth.

Note: Never use sandpaper or abrasive material on these surfaces!

Storage

When not in use, store the jack with ram fully retracted.

- KNOW YOUR PRODUCT -

MODEL	CAPACITY (TON)	MIN. HEIGHT (IN)	MAX. HEIGHT (IN)	EXTENSION SCREW (IN)	HANDLE LENGTH (IN)	JACK SIZE (L x W) (IN)	NET WEIGHT (LB.)
YA1731A	22	9-7/8"	19-3/8"	3-7/8"	40-7/8"	21-3/8" x 12-5/8"	94

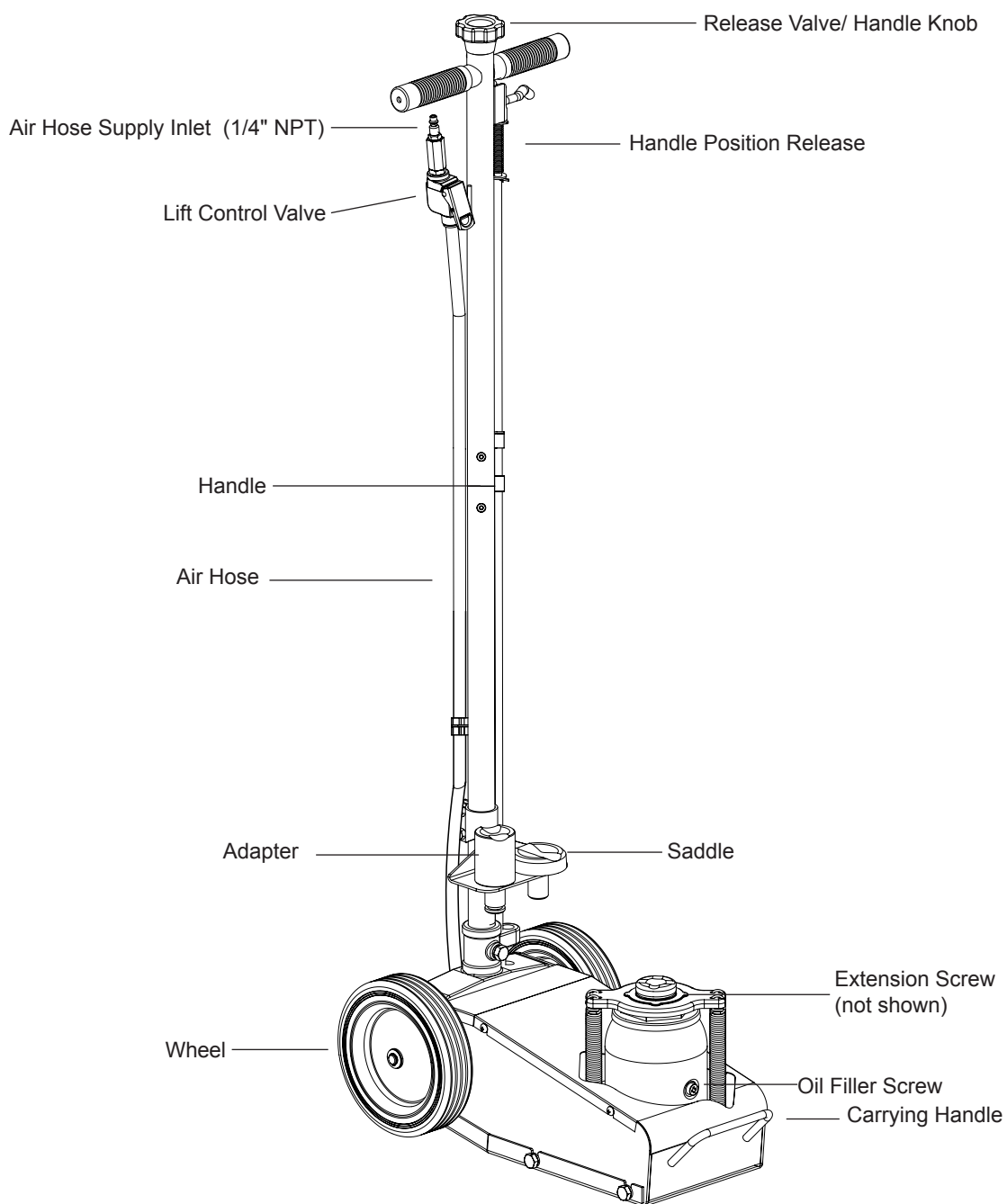


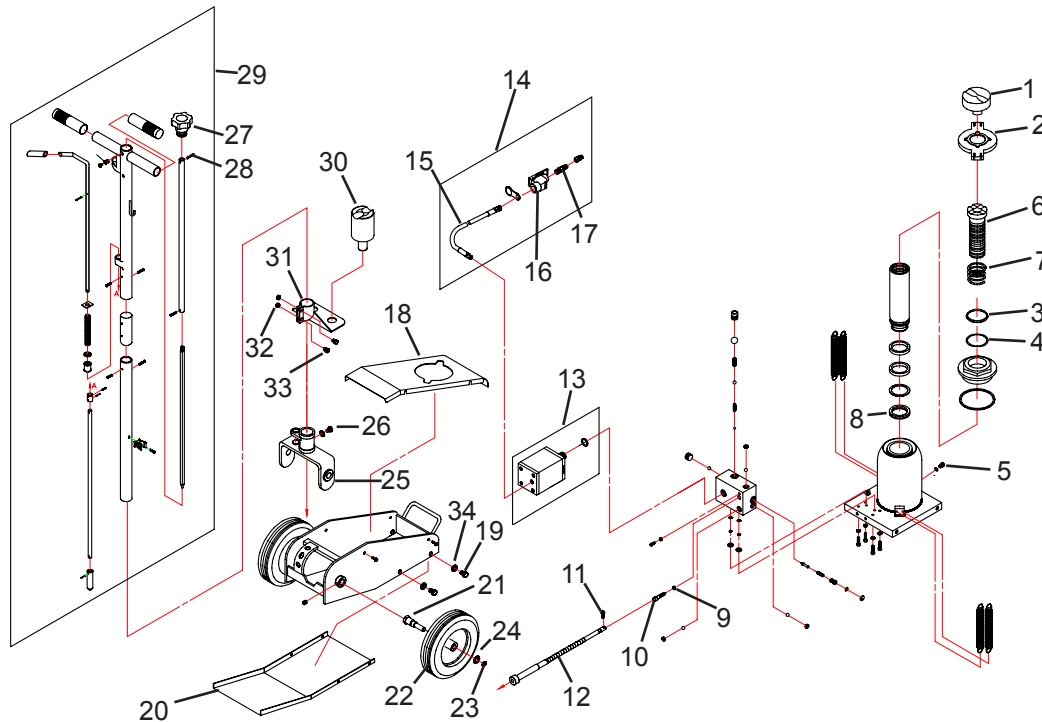
Figure 1 - Model YA1731A Components

TROUBLESHOOTING

Symptom	Possible Causes	Corrective Action
Jack will not lift load	<ul style="list-style-type: none"> • Release valve not tightly closed • Overload condition • Air supply inadequate 	<ul style="list-style-type: none"> • Ensure release valve tightly closed • Remedy overload condition • Ensure adequate air supply
Jack will lift, but not maintain pressure	<ul style="list-style-type: none"> • Release valve not tightly closed • Overload condition • Hydraulic unit malfunction 	<ul style="list-style-type: none"> • Ensure release valve tightly closed • Remedy overload condition • Contact Snap-on Tech. Service
Jack will not lower after unloading	<ul style="list-style-type: none"> • Reservoir overfilled 	<ul style="list-style-type: none"> • Ensure load is removed, then drain fluid to proper level
Poor lift performance	<ul style="list-style-type: none"> • Fluid level low • Air trapped in system 	<ul style="list-style-type: none"> • Ensure proper fluid level • With ram fully retracted, remove oil filler screw to let pressurized air escape, then reinstall oil filler screw
Will not lift to full extension	<ul style="list-style-type: none"> • Fluid level low 	<ul style="list-style-type: none"> • Ensure proper fluid level

REPLACEMENT PARTS

Please refer to the Parts drawing when ordering parts. Not all components of the axle jack are replacement items, but are illustrated as a convenient reference of location and position in the assembly sequence. When ordering parts, give Model number, serial number and description below. Write for current pricing: Snap-on Tools Company, Kenosha, WI 53141-1410



Item	Description	Part Number	Qty	Item	Description	Part Number	Qty
1	Saddle	A070-00007-000	1	21	Wheel axle	A070-00003-100	2
2	Cover	A070-00008-000	1	22	Rubber wheel	A070-00001-000	2
3	Dust wiper	5905-00550-000	1	23	Retaining ring	5304-00013-000	2
4	O-ring	5901-00554-000	1	24	Washer	5308-00013-006	2
5	Filler plug	G62S-03301-000	1	25	Handle fork	A070-00006-100	1
6	Ext. Screw	A070-11001-000	1	26	Screw	5115-10017-000	1
7	Spring	A070-11002-000	1	27	Knob	G251-40001-000	1
8	U-cup	5902-00591-000	1	28	Spring pin	5402-04028-000	1
9	Seal	5905-00054-000	1	29	Handle assy	A070-40000-000	1
10	Release valve	A090-12008-000	1	30	Adapter, 2-1/2"	A070-00015-000	1
11	Screw	5105-05016-000	1	31	Adapter Holder	A070-81001-000	1
12	Flex joint assy	A070-30000-000	1	32	Nut	5202-00008-000	2
13	Air motor assy	G831-03200-000	1	33	Screw	5102-08025-000	2
14	Hose assy	A220-01000-000	1	34	Lock Washer	5303-00010-100	5
15	Air hose	A240-02100-000	1	*	Repair Kit	A0901S-077	
16	Lift control valve	A240-02200-000	1				
17	Air filter	A220-01100-000	1				
18	Cover plate	A090-00001-000	1				
19	Screw	5102-10025-000	4				
20	Plate	A090-00002-000	1				

Figure 2 - Replacement Parts Illustration for Model YA1731A

LIMITED WARRANTY STATEMENT

Snap-on Tools warrants this product to be free from defects in material and workmanship for a period of 1 year from date of purchase. This warranty applies to the original purchaser (end user) only and is not transferable. Damaged components and assemblies i.e. bent ram and pump pistons, dented reservoirs, cracked or altered components, are the result of mis-use, mis-application or a combination of both. These conditions will not be considered for warranty credit. We have complete confidence that the Snap-on product you purchase will meet or exceed your performance requirement. However in the unlikely event that a Snap-on product fails due to material or workmanship defect within the warranty period you may contact your retailer for disposition or you may contact an Authorized Service Center listed in the product owner's manual. Except where such limitations and exclusions are specifically prohibited by law, the consumer's sole and exclusive remedy shall be the repair or replacement of the defective product. Snap-on shall not be liable for any consequential or incidental damage or loss whatsoever, and the duration of any and all expressed and implied warranties, including without limitation, any warranties of merchantability and fitness for a particular purpose, is limited to a period of 1 year from date of purchase. Some States do not allow the exclusion or limitation of incidental or consequential damages, so the above may not apply to you. This warranty gives you specific legal rights. You may also have other rights which vary from state to state.

[illegible]

[illegible]