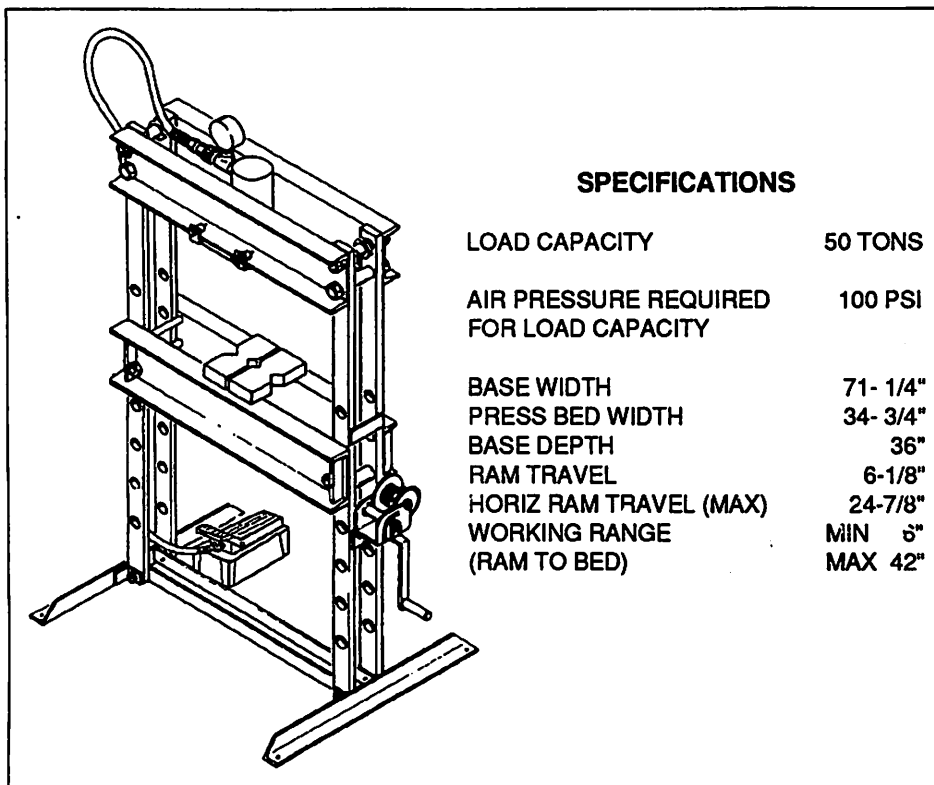


### OWNERS MANUAL



#### SPECIFICATIONS

LOAD CAPACITY	50 TONS
AIR PRESSURE REQUIRED FOR LOAD CAPACITY	100 PSI
BASE WIDTH	71- 1/4"
PRESS BED WIDTH	34- 3/4"
BASE DEPTH	36"
RAM TRAVEL	6-1/8"
HORIZ RAM TRAVEL (MAX)	24-7/8"
WORKING RANGE (RAM TO BED)	MIN 5" MAX 42"

#### DESCRIPTION

Model 93622 press is designed for automotive, truck, implement, fleet, and industrial repair shops where pressing, bending, straightening, forming, holding is required. The press provides the following features:

- Air hydraulic pump extends the ram and is foot operated leaving both hands free to control the work.
- Ram can be moved horizontally right or left for proper positioning over the work.
- Winch assembly provides a safe and fast way to raise and lower the bed rails.
- A pressure gauge is provided for monitoring the applied press force.

#### OWNER/OPERATOR RESPONSIBILITY

It is the owner/operator responsibility to properly use and maintain this equipment.

The instructions and warnings contained in this manual shall be read and understood by the owner/operator prior to operating this equipment.

If an owner/operator does not understand English, the contents of this manual shall be explained in the owner/operator native language to assure the owner/operator comprehends.

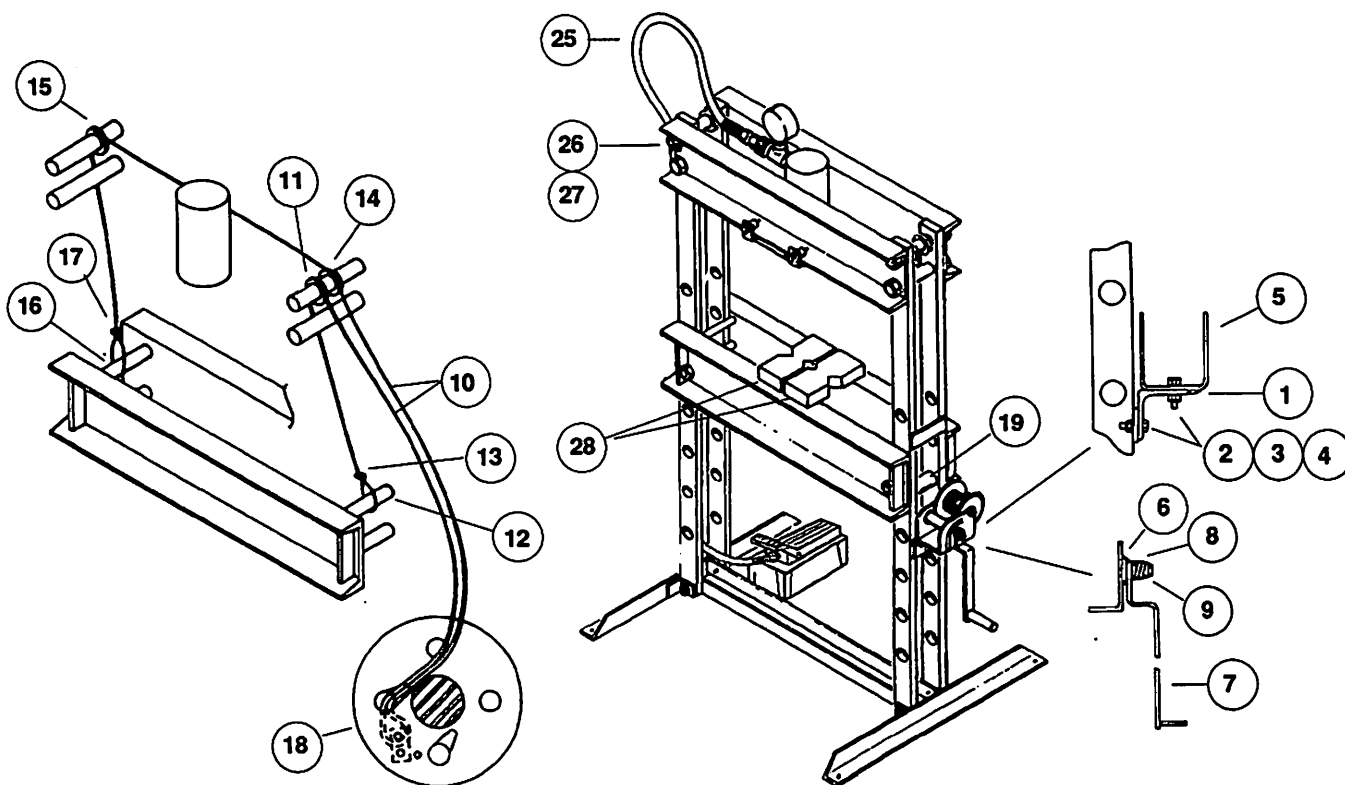
It is the owners/operators responsibility to maintain the legibility of all warning and instruction labels.

The owner/operator shall retain this manual for future reference to important warnings, operating and maintenance instructions.

#### ! WARNING

**FAILURE TO HEED THE FOLLOWING WARNINGS MAY RESULT IN PERSONAL INJURY AND/OR PROPERTY DAMAGE.**

- Do not use the shop press if hydraulic hose is cut, worn, kinked or leaking. High pressure can inject hydraulic oil into skin.
- Wear safety glasses or protective face shield when operating press.
- Install safety shield around work unit whenever possible to protect against flying objects if work unit fractures under load.
- Align and support all work to provide straight ram pressure against a solid base.
- Do not overload ram. Always monitor pressure gauge for applied load.
- Limit of ram travel is indicated when groove in ram appears. Stop pumping. Ram will not move out any further and continued pumping will impose unnecessary stresses in the ram.
- Do not alter or modify any part of this equipment.
- Check all equipment regularly and repair or replace worn or damaged parts immediately.
- For safety reasons, use only manufacturer approved accessories with the shop press.



## ASSEMBLY

- A. Install winch bracket (1) on side of press that has two pulleys at top of column using bolts (2), lockwasher (3) and nuts (4).
- B. Install winch (5) to winch bracket (1) using bolts (2), lockwashers (3) and nuts (4).
- C. Slide handle disc (6) on pinion shaft. Thread handle (7) on pinion shaft.

### CAUTION

Handle must turn freely on threads of pinion shaft or brake will not work. Do not use winch if handle binds on pinion shaft.

- D. Place coil spring (8) on pinion shaft and install retaining ring (9) in groove on pinion shaft.
- E. Position one end of cable (10) over pulley (11). Route cable down through press column and loop loosely around top spacer (12). Secure loop with wire rope clamp (13).

- F. Position other end of cable (10) over pulley (14). Route cable between ram and front head rail, over pulley (15) and down between press column. Loop cable around top spacer (16) and secure loop with wire rope clamp (17).

- G. Remove slack in cable (10) by pulling on the looped end of cable (10) that is hanging on winch side of press. Make sure cable is tracking in pulleys. Equalize the loop end and feed the cable counterclockwise under the winch drum. From inside the drum, thread the cable loop through one round dished hole on drum side. Clamp the cable to the drum outside with rope keeper parts (18) (rope keeper, two carriage bolts, two washers, and two nuts). Make sure carriage bolt heads are on inside of drum.

- H. Take up cable slack by turning winch handle clockwise. Check winch and cable operation. Adjust as required.

- I. Turn winch clockwise and raise

bed rails to desired position and insert support pins (19). Make sure support pins are fully inserted to the stops.

- J. Turn winch counterclockwise and lower bed rails until cable is slack and bed rails are resting fully on support pins.

### CAUTION

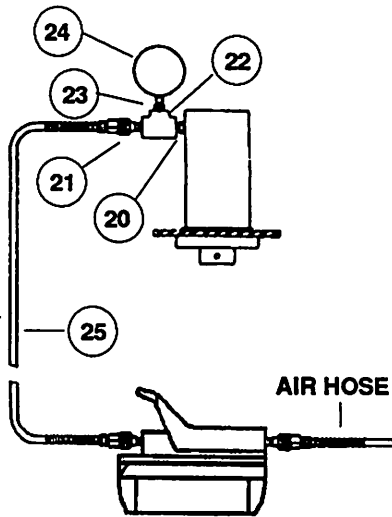
To prevent hydraulic oil contamination, make sure all fittings are clean before installing. Use Perma-Lok or Loctite on pipe threads to prevent leaks.

- K. Install nipple (20) and ram half-coupler (21) into tee (22).
- L. Remove pipe thread protector from ram and install tee (22) into ram with tee gauge opening facing upward.
- M. Install bushing (23) into tee gauge opening.

### CAUTION

To prevent damage to gauge, do not tighten gauge into tee using body of gauge. Use wrench flats to tighten and position gauge.

## ASSEMBLY (CONT)



- N. Install gauge (24) into tee (22). Tighten and position gauge to face front of press.
- O. Connect hydraulic hose (25) to ram and pump.
- P. Connect air hose to pump.
- Q. Hold pump release valve open with the pedal while depressing the pump air valve. Allow pump to cycle 15 times. ( Pump air valve is located under PUMP end of pedal. )
- R. Roll ram to winch side of press. Place pump on top of press.
- S. Hold or secure pump so it does not fall. Depress pump foot pedal and allow ram to extend and retract three times to purge air from hydraulic circuit.
- T. Remove pump from top of press and disconnect air hose.
- U. Position hydraulic hose in a loop to allow ram to be fully rolled back and forth horizontally on top of press. Clamp hydraulic hose (25) to press side using clamp (26) and screw (27).
- V. Place arbor plates (28) on press bed rails with pins down between rails.

## INSPECTION

Prior to operation or maintenance a visual inspection shall be made. Check for hydraulic leaks, damaged accessories, worn or missing parts. Check hose for kinks or damage.

Check operation by depressing pump foot pedal. Make sure pump and ram operate smoothly and ram is not binding. If pump or ram do not respond to pump action, refer to TROUBLESHOOTING and perform AIR PURGING procedures.

If any component is damaged, badly worn, or operates abnormally it shall be removed from service. Contact a factory authorized service center for repair.

Any component that has been subjected to an abnormal load or shock, shall be inspected by a factory authorized service center.

An annual inspection is recommended to be performed by a factory authorized service center.

## OPERATION

Press operation consists first of adjusting the bed rails to the desired height, inserting the support pins, lowering the bed rails down until the cable is slack and the bed rails are resting fully on the support pins. Next place the arbor plates on the bed rails and the unit to be worked on. To extend the ram, carefully depress the pump foot pedal. To retract the ram, release the foot pedal

## MAINTENANCE

### CHECKING HYDRAULIC OIL LEVEL

Fill pump hydraulic reservoir as follows:

- A. Disconnect air hose from pump and make sure ram is fully retracted.
- C. Clean any dirt from around pump filler plug and remove plug.
- D. Fill pump hydraulic reservoir with clean hydraulic jack oil. Do not overfill.



## CAUTION

**BRAKE OR TRANSMISSION  
FLUIDS WILL DAMAGE  
EQUIPMENT SEALS.**

- E. Reinstall filler plug in pump. Hand tightening is usually adequate.

## LUBRICATION

Apply oil to press and winch assembly moving parts as required.

## TROUBLESHOOTING

If the following procedures do not correct the problem, contact a factory authorized service center. When submitting equipment to be repaired, be sure to state the nature of the problem and indicate if a repair cost estimates is required.

### AIR PURGING

Air must be purged from the press hydraulic circuit after press assembly or removal and replacement of hydraulic components. Also, the pump may be air bound and require priming if the pump cycles but the ram does not extend.

Perform the following procedures to prime the pump and remove air from the hydraulic circuit.

### TO PRIME AIR BOUND PUMP

- A. Connect air hose to pump.
- B. Hold pump release valve open with the pedal while depressing the pump air valve. Allow pump to cycle 15 times. ( Pump air valve is located under PUMP end of pedal.)

### TO PURGE AIR FROM HYDRAULIC CIRCUIT

- A. Connect air hose to pump.
- B. Depress foot pedal and allow pump to cycle 15 times.
- C. Roll ram to winch side of press. Place pump and coiled hose on top of press.

- D. Hold or secure pump so it does not fall. Depress pump foot pedal and allow ram to extend and retract three times to purge air from hydraulic circuit.
- E. Remove pump from top of press.
- F. Check ram and pump action. If ram does not respond correctly, repeat the above procedures several times until air is fully purged from the hydraulic circuit.

#### **COMMON PROBLEMS**

##### **PUMP STALLS UNDER HEAVY LOAD**

- Air hose restricted or leaking. Check air hose for restrictions or leaks.
- Air pressure too low. Check air pressure supply. 100 PSI required for rated load capacity.
- Pump requires lubricating. Squirt 1/4 ounce of SAE 30 weight motor oil into pump air inlet.

#### **RAM WILL NOT EXPEND FULLY**

- Pump oil level low. Refer to CHECKING HYDRAULIC OIL LEVEL procedure.

#### **RAM MOVES ERRATICALLY**

- Air in hydraulic circuit. Refer to AIR PURGING procedures and purge air from hydraulic circuit.

#### **RAM WILL NOT EXTEND**

- Pump needs priming. Refer to AIR PURGING procedures and prime the pump.

### **LIMITED WARRANTY**

Lincoln, A Pentair Company, warrants that jacks and related service equipment manufactured by it will be free from defects in material and workmanship during the one (1) year following the date of purchase. This warranty is extended to the original retailer purchaser only. If a jack or related service equipment proves to be defective during this warranty period, it will be repaired or replaced without charge. To obtain repair or replacement, it must be shipped, transportation charges prepaid, with proof of date of purchase, to a Lincoln authorized Warranty and Service Center, within the one (1) year following the date of purchase. This warranty does not apply to parts damaged from accident, overload, or abuse, nor does it apply to any equipment which has been altered or used with special attachments other than those recommended by Lincoln. No other express warranty applies to jacks and related service equipment manufactured by Lincoln.

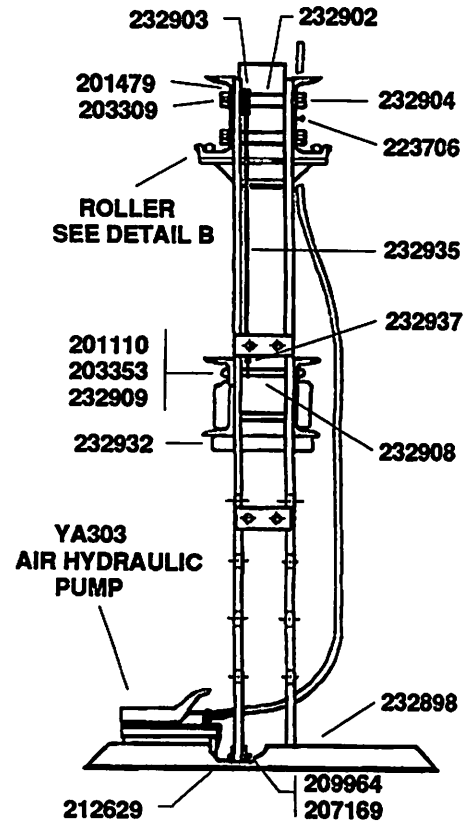
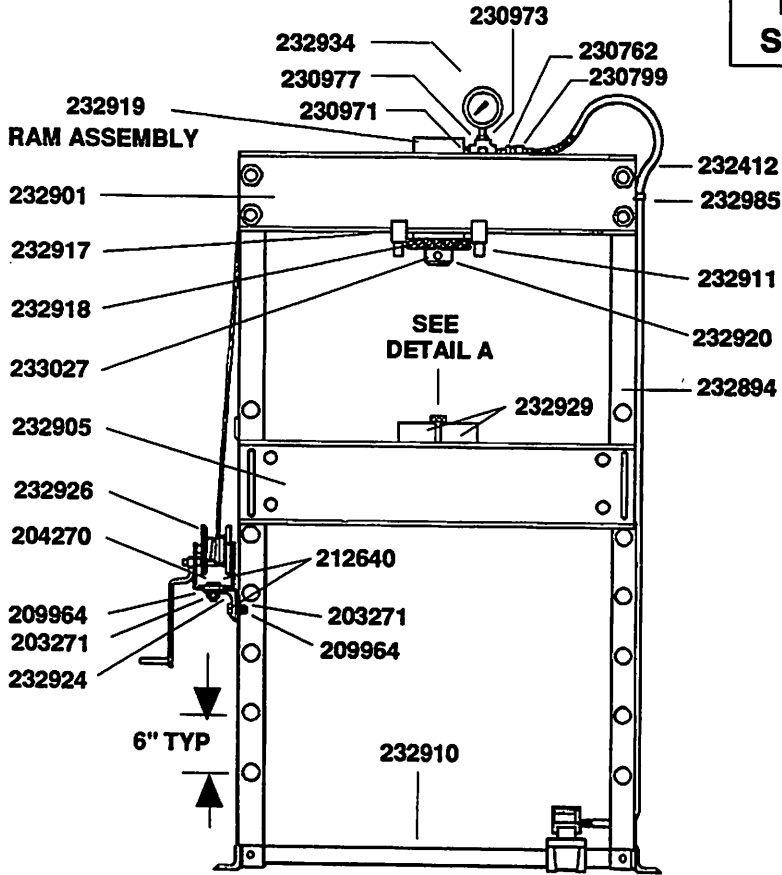
ANY IMPLIED WARRANTIES applicable to jacks and related service equipment manufactured by Lincoln, INCLUDING THE WARRANTIES OF MERCHANTABILITY AND FITNESS FOR A PARTICULAR PURPOSE, WILL LAST ONLY FOR ONE (1) YEAR FROM THE DATE OF PURCHASE. SOME STATES DO NOT ALLOW LIMITATIONS ON HOW LONG AN IMPLIED WARRANTY LASTS SO THE ABOVE LIMITATION MAY NOT APPLY TO YOU.

In no event shall Lincoln be liable for incidental or consequential damages. The liability of Lincoln on any claim or damage arising out of the sale, resale, or use of a jack or related service equipment shall in no event exceed the purchase price. SOME STATES DO NOT ALLOW THE EXCLUSION OR LIMITATION OF INCIDENTAL OR CONSEQUENTIAL DAMAGES, SO THE ABOVE LIMITATION OR EXCLUSION MAY NOT APPLY TO YOU.

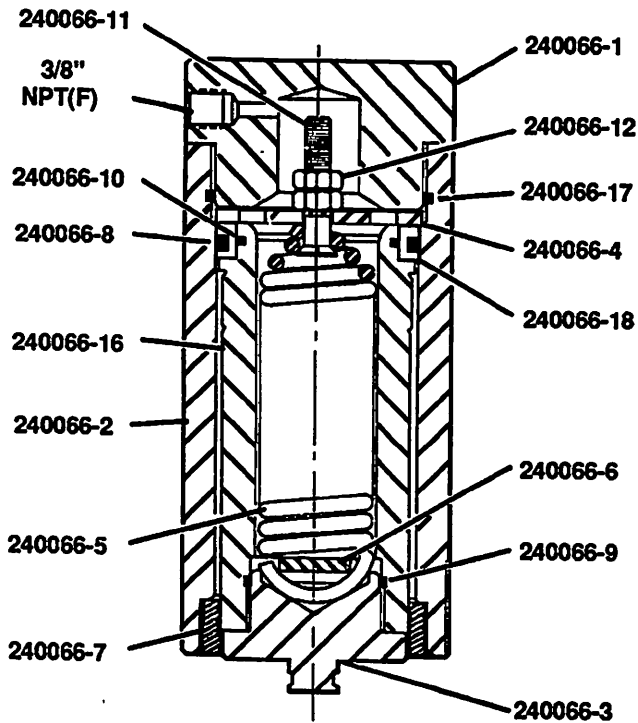
THIS WARRANTY GIVES YOU SPECIFIC LEGAL RIGHTS, AND YOU MAY ALSO HAVE OTHER RIGHTS WHICH VARY FROM STATE TO STATE.

# SERVICE PARTS

## MODEL 622 SHOP PRESS



### 232919 RAM ASSEMBLY

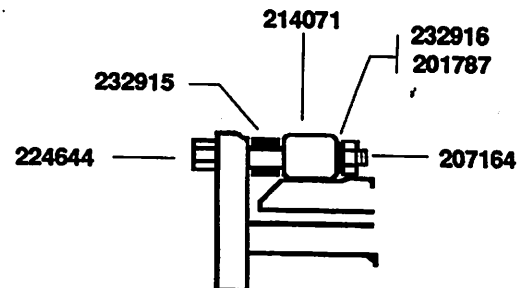


### DETAIL A

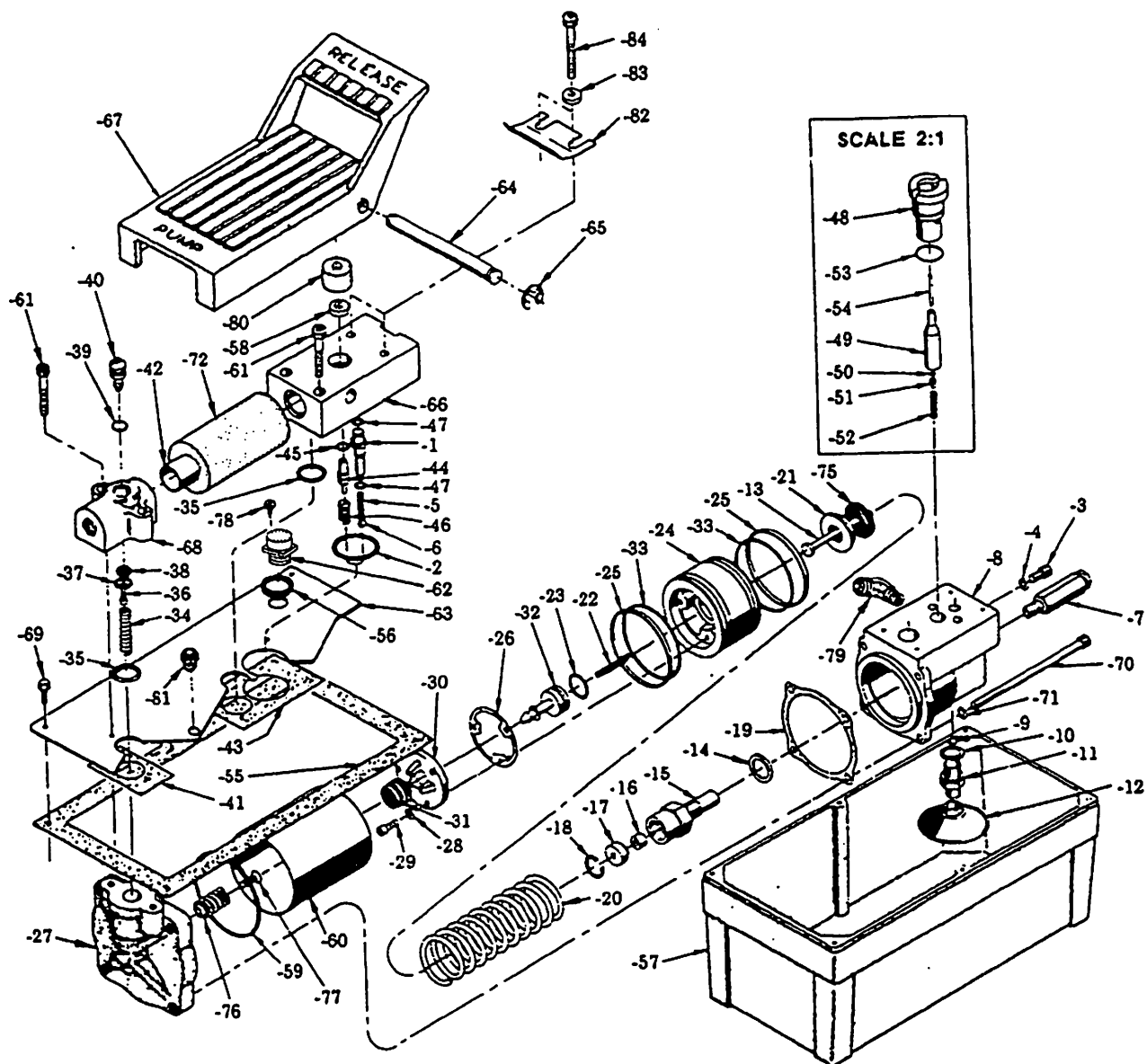


230253  
BEARING SHIELD

### DETAIL B

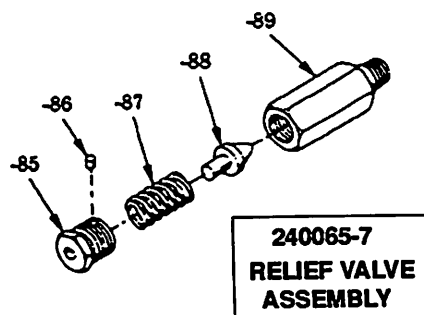


# SERVICE PARTS (CONT)



**NOTE**  
WHEN ORDERING PARTS,  
PREFIX ALL CALLOUTS  
WITH PART NUMBER 240065.

**240510 REPAIR KIT**



**240065-7  
RELIEF VALVE  
ASSEMBLY**

**YA303  
AIR HYDRAULIC PUMP**

**SERVICE PARTS (CONT)****SHOP PRESS SERVICE PARTS**

PART	QTY	DESCRIPTION	PART	QTY	DESCRIPTION	PART	QTY	DESCRIPTION
201110	8	Lockwasher	230977	1	Tee	232932	2	Bed support pin
201479	8	Lockwasher	232894	2	Column	232934	1	Gauge
201787	4	Lockwasher	232898	2	Base	232935	1	Cable
203271	4	Nut	232901	2	Head rail	232937	2	Wire rope clamp
203309	8	Nut	232902	4	Column spacer	232985	1	Hose clip
203353	8	Nut	232903	3	Pulley	233027	1	Set screw
204270	2	Washer	232904	4	Tie rod	240066-1	1	Ram cylinder base
207164	4	Nut	232905	2	Bed rail	240066-2	1	Ram cylinder
207169	4	Nut	232908	4	Spacer	240066-3	1	Ram plunger head
209964	8	Lockwasher	232909	4	Tie rod	240066-4	1	Return spring plate
212629	4	Bolt	232910	2	Tie bar	240066-5	1	Plunger return spring
212640	4	Bolt	232911	1	Thrust plate	240066-6	1	Spring anchor plate
214071	4	Roller	232915	4	Spacer bushing	240066-7	1	Gland nut
223706	1	Screw	232916	4	Washer	240066-8	1	G.T. ring
224644	4	Bolt	232917	1	Support collar	240066-9	1	C-ring
230253	1	Bearing shield	232918	1	Thrust collar	240066-10	1	O-ring
230762	1	Ram end coupler	232919	1	Ram assembly	240066-11	1	Spring anchor screw
230799	1	Hose end coupler	232920	1	Ram pad	240066-12	2	Jam nut
232412	1	Hydraulic hose	232924	1	Winch bracket	240066-16	1	Ram plunger
230971	1	Nipple	232926	1	Winch	240066-17	1	O-ring
230973	1	Bushing	232929	2	Arbor plate	240066-18	1	Wear ring

**AIR HYDRAULIC PUMP SERVICE PARTS**

PART	QTY	DESCRIPTION	PART	QTY	DESCRIPTION	PART	QTY	DESCRIPTION
240065-1	1	Check valve body	240065-30	1	Piston end plate	240065-59	1*	Back-up ring
240065-2	1*	O-ring	240065-31	1*	Piston poppet	240065-60	1	Air cylinder
240065-3	1	Screw	240065-32	1	Exhaust valve stem	240065-61	4	Screw
240065-4	1*	Copper washer	240065-33	2*	O-ring	240065-62	1	Filler plug
240065-5	1*	Spring	240065-34	1*	Spring	240065-63	1	Cover plate
240065-6	1*	Steel ball	240065-35	2*	O-ring	240065-64	1	Pin
240065-7	1	Relief valve assembly	240065-36	1	Screw	240065-65	2	Retaining ring
240065-8	1	Pump body	240065-37	1	Seal guide	240065-66	1	Release valve body
240065-9	1*	Steel ball	240065-38	1*	Air valve poppet	240065-67	1	Foot pedal
240065-10	1*	Copper washer	240065-39	1*	O-ring	240065-68	1	Intake air valve body
240065-11	1	Short filter adapter	240065-40	1	Actuator button	240065-69	6	Screw
240065-12	1	Filter assembly	240065-41	1*	Gasket	240065-70	4	Screw
240065-13	1	Piston	240065-42	1	Muffler	240065-71	4	Lockwasher
240065-14	1*	Copper washer	240065-43	1*	Gasket	240065-72	1*	Foam tube
240065-15	1	Cylinder	240065-44	1	Release valve button	240065-75	1	Bumper
240065-16	1*	U-cap packing	240065-45	1*	O-ring	240065-76	1	Spring
240065-17	1	Retainer	240065-46	1*	Spring	240065-77	1	Screw
240065-18	1*	Retaining ring	240065-47	2*	O-ring	240065-78	1	Screw
240065-19	1*	Gasket	240065-48	1	Poppet retainer	240065-79	1	Elbow
240065-20	1	Spring	240065-49	1	Release valve poppet	240065-80	1*	Foam tube
240065-21	1	Spring guide	240065-50	1*	Steel ball	240065-81	1	Relief valve fitting
240065-22	1*	Spring	240065-51	1	Ball retainer	240065-82	1	Spring clip
240065-23	1*	O-ring	240065-52	1*	Spring	240065-83	2	Washer
240065-24	1	Piston body	240065-53	1*	O-ring	240065-84	2	Screw
240065-25	2*	Piston ring	240065-54	1*	Dowel pin	240065-85	1	Adjusting plug
240065-26	1*	Gasket	240065-55	1*	Reservoir gasket	240065-86	1	Insert
240065-27	1	Rear head	240065-56	1*	Rubber gasket	240065-87	1	Spring
240065-28	3	Lockwasher	240065-57	1	Reservoir	240065-88	1	Cone
240065-29	3	Screw	240065-58	1*	Shaft seal	240065-89	1	Valve body

\* Included in 240510 Repair Kit.