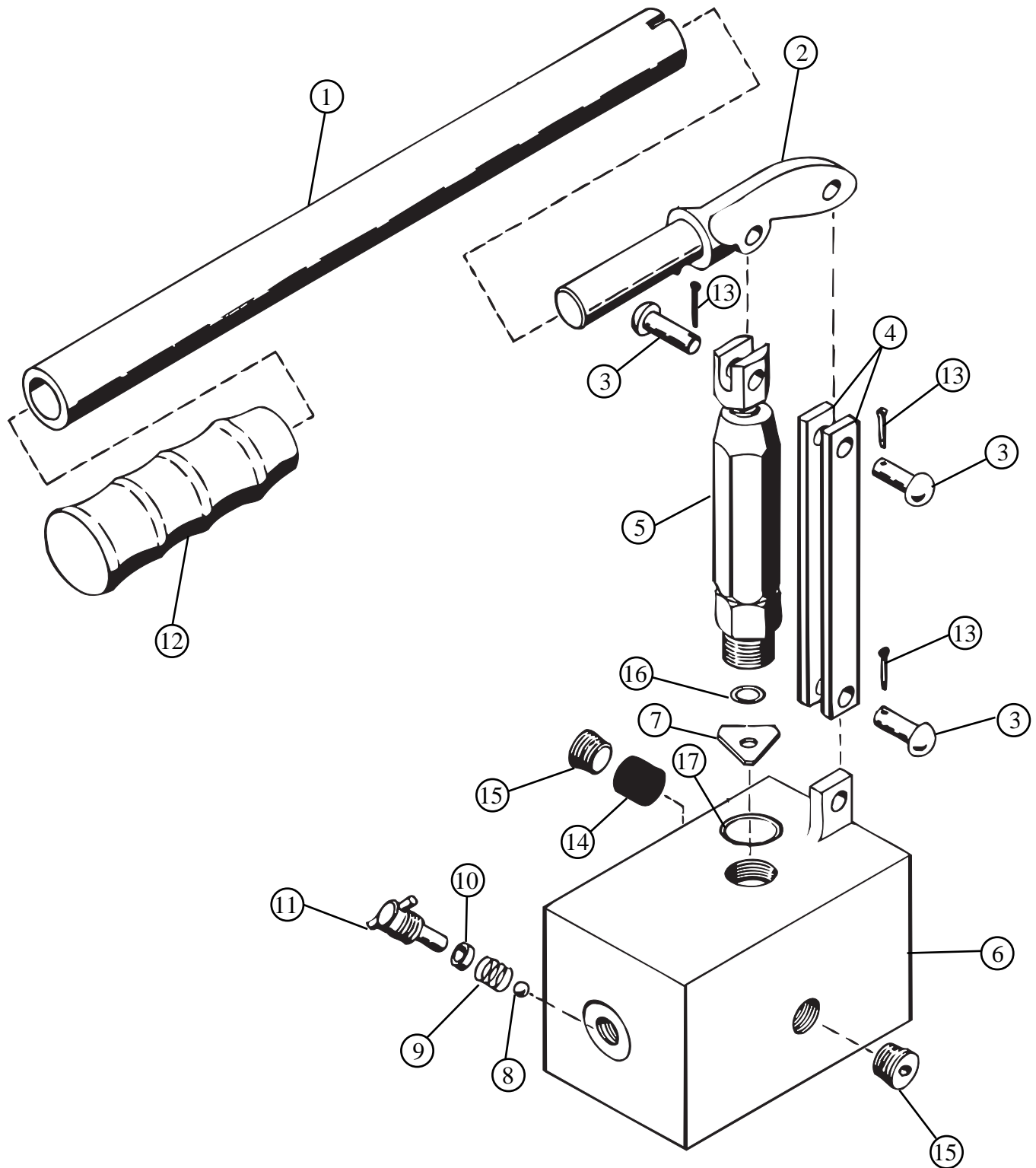




1000 SERIES HAND PUMP REPAIR PARTS SHEET AND OPERATING INSTRUCTIONS

Revised 2-98



1000 SERIES HAND PUMP PARTS LIST

ITEM NO.	DESCRIPTION	PART NO.					QUANTITY
		34100 1000-3	34101 1000-4	34102 1000-6	34103 1000-8	34104 1000-12	
1	Handle	55703	55703	55703	55703	55703	1
2	Pump Lever	55702	55702	55701	55702	55702	1
3	Pin	5740015	5740015	5740015	5740015	5740015	3
4	Link Pump	5742104	5742104	5742104	5742104	5742104	2
5	Pump Asm.	563040	563041	563043	563044	563045	1
6	Block Asm.	5740007	5740007	5740007	5740009	5742018	1
7	Washer, Copper	*	*	*	*	---	1
8	Ball Bearing	92550	92550	92550	92550	92550	1
9	Spring, Rel. Cage	55709	55709	55709	55709	55709	1
10	Rel. Valve Pkg.	*	*	*	*	*	2
11	Rel. Screw Asm.	55712	55712	55712	55712	55712	1
12	Handgrip, Rubber	55701	55701	55701	55701	55701	1
13	Cotter Pin	93776	93776	93776	93776	93776	3
14	Filter	*	*	*	*	*	1
15	Pipe Plug, 3/8-18	97093	97093	97093	97093	97093	2
16	O-Ring	---	---	---	---	*	1
17	O-Ring	---	---	---	---	*	2
	Packing Kit	54318	54319	54321	54322	54323	

*Included in Packing Kit

1000 SERIES HAND PUMP OPERATING INSTRUCTIONS

1. Connect fluid supply line to inlet port of pump.
 - 1.1 Check oil level on pumps with reservoirs. Reservoir should be approximately 2/3 full. Open air vent.
2. Connect pressure line to cylinder or system to outlet port of pump.
3. Bleed air from system by opening release screw and operating handle approximately 12 times through full stroke. Close release screw. Invert cylinder and place it below the pump, then actuate pump sufficiently to raise cylinder at least one half of its stroke. Then by opening the release screw and retracting the cylinder completely, all air trapped in connecting line and cylinder should be completely expelled.
4. To release pressure from the hydraulic system, open release screw to allow oil to return to reservoir or fluid supply line.

Simplex Division of Templeton, Kenly & Co., Inc.

2525 Gardner Rd. • Broadview, IL 60153 • Phone: (708)865-1500 Fax: (708)865-0894 Toll Free: 1(800)323-9114