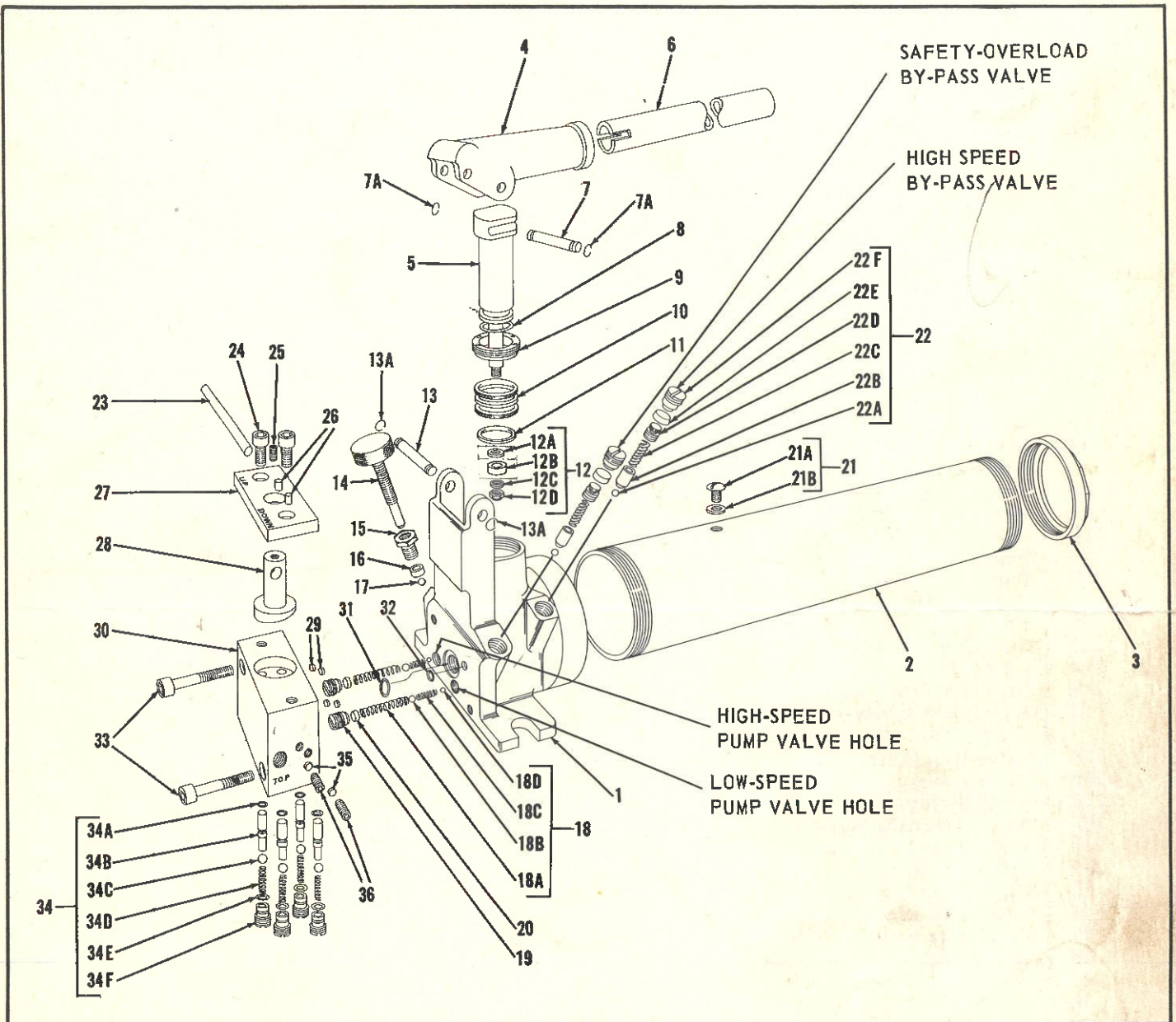


# Simplex Re-Mo-Trol Pump Two-way



NO.  
**RP7**

**Templeton, Kenly & Co.**  
16th and Gardner Road, Broadview, Ill. (Chicago Suburb)

# Simplex Re-Mo-Trol Pump - Two-way

Item No.	Name of Part	Jack No. RP7	
		Part No.	List Price Each
1	Housing (Incl. Oil Channel Plug 3HJ-1A) . . . . .	RP7-1	22.60
2	Reservoir Tube . . . . .	RP5-2L	9.00
3	Reservoir Tube Support . . . . .	RP5-3	2.50
4	Handle Socket . . . . .	RP5-6	1.30
5	Pump Piston . . . . .	RP5-13	2.20
6	Operating Handle . . . . .	303A-47	2.50
7	Pump Piston Pin . . . . .	RP5-12	.75
7A	Pump Piston Pin Clip . . . . . (2-Req.)	3HJ-18A	.01
8	Pump Piston "O" Ring . . . . .	RP5-13C	.20
9	Pump Gland . . . . .	RP5-9	1.50
10	Pump Gland Packing (Set) . . . . .	RP5-10	.35
11	Male Adapter . . . . .	RP5-11	1.00
12	Pump Packing Complete (Incl. Items No. 12A, 12B, 12C, & 12D) . . . . .	RP5-4	.21
12A	Pump Cup Washer . . . . .	RP5-13E	.03
12B	Pump Piston Cup . . . . .	RP5-13D	.15
12C	Pump Cup Washer (#10 Std. Small Brass Washer) . . . . .	----	.02
12D	Pump Cup Nut (#10-32 Thin Flexloc Nut) . . . . .	----	.05
13	Handle Socket Pin . . . . .	RP5-6A	.75
13A	Handle Socket Pin Clip . . . . . (2-Req.)	3HJ-18A	.01
14	Release Screw . . . . .	RP3-4	.60
15	Release Screw Gland . . . . .	RP3-5	.40
16	Release Valve Packing . . . . .	303A-40A	.15
17	Release Valve Ball (1/4) . . . . .	3HJ-23B	.05
18	Pump Valve Assembly (Incl. Items No. 18A, 18B, 18C, & 18D) . . . . . (2-Req.)	RP5-5	.40
18A	Pump Valve Spring (Large) . . . . . (2-Req.)	3HJ-23D	.02
18B	Pump Valve Ball (Large-3/8) . . . . . (2-Req.)	3HJ-23C	.04
18C	Pump Valve Spring (Small) . . . . . (2-Req.)	RP5-14	.02
18D	Pump Valve Ball (Small-1/4) . . . . . (2-Req.)	3HJ-23B	.05
19	Valve Screw . . . . . (2-Req.)	3HJ-21	.15
20	Valve Seal . . . . . (2-Req.)	3HJ-24	.10
21	Oil Filler Screw Assembly (Incl. Items No. 21A & 21B) . . . . .	3HJ-22	.10
21A	Oil Filler Screw . . . . .	3HJ-22B	.05
21B	Oil Filler Screw Washer . . . . .	3HJ-22A	.01
22	High Speed & Safety By-Pass Valve Assembly (Incl. Items No. 22A, 22B, 22C, 22D, 22E, & 22F) . . . . . (2-Req.)	100HJ-52	.55
22A	Valve Ball (3/16) . . . . . (2-Req.)	303A-39B	.02
22B	Valve Spring Plunger . . . . . (2-Req.)	RP3-7	.10
22C	Valve Spring . . . . . (2-Req.)	RP3-7A	.10
22D	Valve Adjusting Screw . . . . . (2-Req.)	RP3-7B	.15
22E	Valve Seal . . . . . (2-Req.)	3HJ-24	.10
22F	Valve Screw . . . . . (2-Req.)	3HJ-21	.15
23	Cam Handle . . . . .	RP7-26A	1.00
24	Valve Cam Plate Screw (3/8-16 x 1/2 Socket Hd. Screw) . . . . . (2-Req.)	----	.15
25	Cam Valve Screw (1/4-20 x 3/8 Socket Set Screw) . . . . .	----	.10
26	Handle Stop Pin (5/16 Dia. x 1" Driv-Loc Pin) . . . . . (2-Req.)	----	.04
27	Valve Cam Plate . . . . .	RP7-25	7.10
28	Cam Valve . . . . .	RP7-26	4.10
29	Oil Channel Seal . . . . . (4-Req.)	30HJ-35	.05
30	Valve Body . . . . .	RP7-1A	52.30
31	Inlet Seal "O" Ring . . . . .	RP5-13C	.20
32	Outlet Seal "O" Ring . . . . .	RP7-37	.15
33	Valve Body Screw (3/8-16 x 2 1/2 Socket Hd. Screw) . . . . . (2-Req.)	----	.25
34	Plunger Assembly Complete (Incl. Items No. 34A, 34B, 34C, 34D, 34E, & 34F) . . . . . (4-Req.)	RP7-34	5.00
34A	Plunger "O" Ring . . . . . (4-Req.)	RP7-37	.15
34B	Valve Plunger . . . . . (4-Req.)	RP7-27	2.25
34C	Plunger Ball (3/8) . . . . . (4-Req.)	3HJ-23C	.04
34D	Valve Plunger Spring . . . . . (4-Req.)	RP7-29	.05
34E	Spring Retainer Screw "O" Ring . . . . . (4-Req.)	RP7-38	.15
34F	Spring Retainer Screw . . . . . (4-Req.)	RP7-28	2.45
35	Oil Channel Seal . . . . . (2-Req.)	30HJ-35	.05
36	Oil Channel Plug . . . . . (2-Req.)	30HJ-34	.05
	Valve Body Complete (Incl. Items No. 23 to 36 Inclusive) . . . . .	RP7-10	70.00

In ordering, specify the PART NUMBER, NAME OF PART, and JACK NUMBER

**Templeton, Kenly & Co.**

16th and Garden Road, Peoria, Ill. (Chicago Office)