



TEMPLETON, KENLY & COMPANY

GARDNER ROAD and 16th STREET
PHONE 312 - 343-0880

BROADVIEW, ILLINOIS 60153
TWX 910 - 226-1955

HYDRAULIC HAND JACKS

REPAIR PARTS SHEET OPERATING INSTRUCTIONS

25C22 — 50C
25C28 — 50C26
30C — 100C

PRELIMINARY PROCEDURE

1. Using notched end of operating lever turn item 64 release valves counter-clockwise (open) two turns.
2. Insert operating lever thru holes in both lever sockets.
3. Stroke both pump pistons approximately twenty times to purge air from hydraulic system.

JACKING AND RETRACTING

1. To extend ram plunger turn release valve (item 64) to maximum clockwise "closed" position using notched end of operating lever. After maximum clockwise rotation exert a slight pressure on the release screw to seat ball (CAUTION: DO NOT OVERTIGHTEN)
2. To lower ram plunger turn release valve (item 64) counter-clockwise (open position) slowly. Ram plunger will retract under load and then by hand pressure to closed position.

INSTALLING GAUGE (OPTIONAL EQUIPMENT)

1. Remove screw and seal items 59 & 60 from gauge port.
2. Screw gauge into port of gauge adapter with gauge facing away from male end of gauge adapter.

TEST DATA

25C22 - 25 Tons @ 7100 PSI on 7.07 Sq. In. Ram Area Res. Cap. 121.38 Cu. In.; Lift 16 Inches
25C28 - 25 Tons @ 7100 PSI on 7.07 Sq. In. Ram Area Res. Cap. 163.80 Cu. In.; Lift 22 Inches
30C - 30 Tons @ 8490 PSI on 7.07 Sq. In. Ram Area Res. Cap. 48.65 Cu. In.; Lift 6-3/4 In.
50C - 50 Tons @ 9050 PSI on 11.04 Sq. In. Ram Area Res. Cap. 84 Cu. In.; Lift 7 Inches
50C26 - 50 Tons @ 9050 PSI on 11.04 Sq. In. Ram Area Res. Cap. 255 Cu. In.; Lift 20-3/8 In.
100C - 100 Tons @ 10,200 PSI on 19.63 Sq. In. Ram Area Res. Cap. 130 Cu. In.; Lift 6 Inches

GUARANTEE

Templeton, Kenly & Co., Broadview, Ill., guarantees its Products against defects in workmanship and materials for 1 year from date of delivery to the user. When question of warranty arises, the user should send his unit to the nearest simplex Authorized Service Depot for inspection, transportation prepaid and evidence of purchase date furnished.

If the difficulty comes under the terms of our guarantee, the Authorized Service Depot will repair or replace parts affected and return prepaid. Our guarantee does not cover ordinary wear and tear, abuse, misuse, overloading, altered products or use of improper fluid.

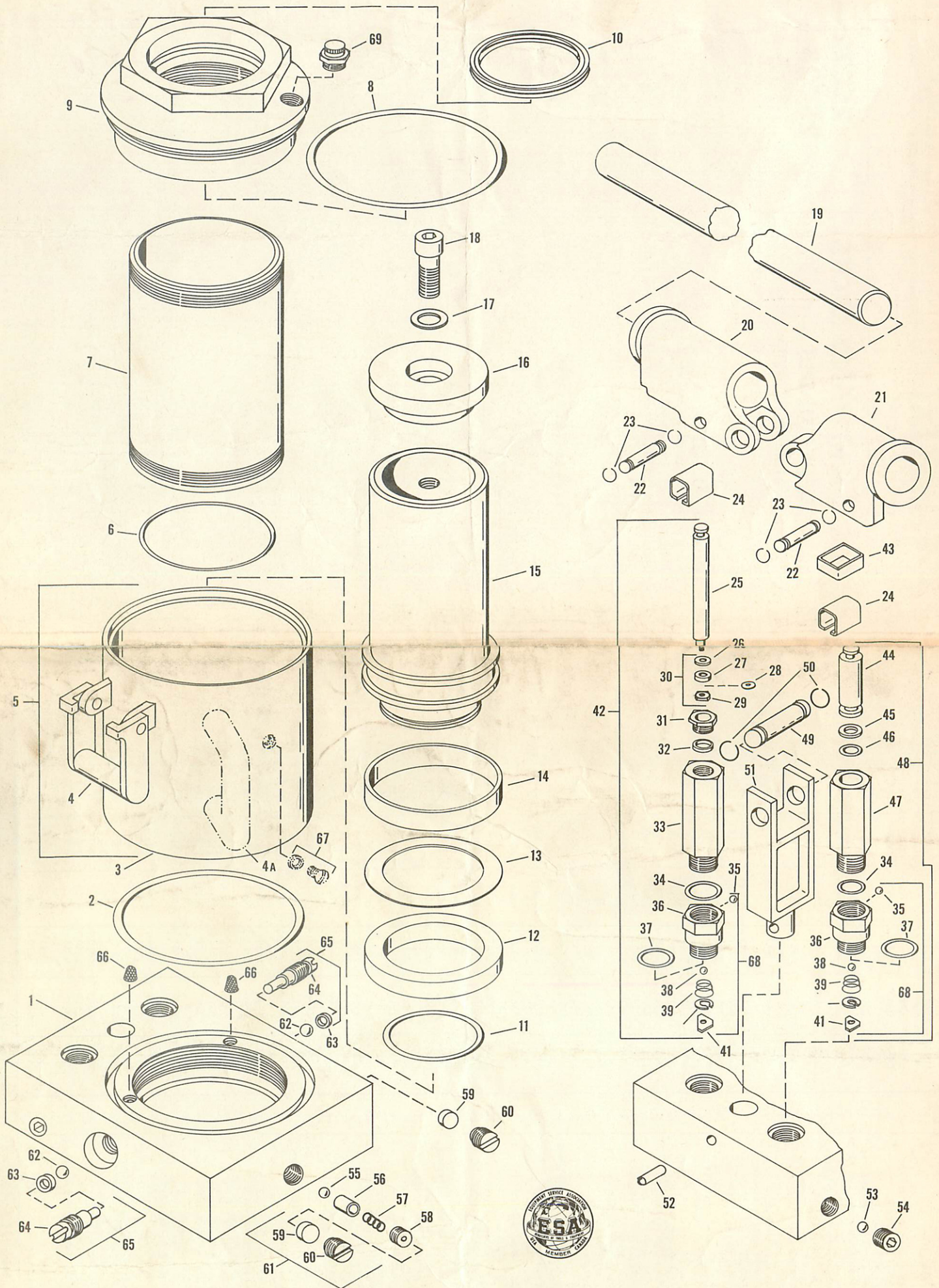
3. Screw gauge adapter into gauge port stopping with gauge in upright position.

ADJUSTING RELIEF VALVE

1. Gauge and adapter must be installed.
2. Turn release valve (item 49) to maximum clockwise "closed" position.
3. Remove screw and seal from (item 61).
4. Place jack in test stand or under load greater than rated capacity of jack.
5. Insert 7/32 hex rod thru hex of item 58 adjusting screw.
6. Stroke pump pistons until maximum reading on gauge is at rated capacity of jack.
7. Turn adjusting screw counter-clockwise to reduce the relief valve setting; clockwise to increase valve setting. Consult test data for proper setting (PSI).
8. Repeat steps until desired relief valve pressure setting is obtained.

OIL LEVEL

1. With jack in upright position with ram retracted, remove filler plug assembly items 67 or 69.
2. Oil should be visible at hole level, not above.
3. If necessary, add Simplex hydraulic oil. Do not overfill.
4. Replace filler plug and gasket.



KEY NO.	PART NAME.	NO. REQ	25C22	25C28	30C	50C	50C26	100C
1	Base	1	6614	6614	6614	6675	6675	6694
2	Reservoir Tube "O" Ring	1	*	*	*	*	*	*
3	Reservoir Tube Assy.	1	4816	4926		2774	2818	2823
4	Carrying Handle	1	0897	0897		0897	0897	0897
4A	Carrying Handle	1			0417			
5	Reservoir Tube Complete	1	4951	4953	2715	2775	2819	2822
6	Inside Cylinder "O" Ring	1	*	*	*	*	*	*
7	Inside Cylinder	1	2685	2689	2695	2772	2817	2834
8	Reservoir Tube "O" Ring	1	*	*	*	*	*	*
9	Top Nut	1	2694	2694	2694	2771	2771	2821
10	Quad Ring	1	*	*	*	*	*	*
11	"O" Ring	1	*	*	*	*	*	*
12	"U" Leather	1	*	*	*	*	*	*
13	Back Up Washer	1	*	*	*	*	*	*
14	Ram Plunger Wear Ring	1	*	*	*	*	*	*
15	Ram Plunger	1	6646	6650	6615	6676	6682	6695
16	Self Leveling Head	1	2721	2721	2721	2788	2788	2828
17	SAE Washer	1	3924	3924	3924	3927	3927	3930
18	Socket Head Cap Screw	1	3595	3595	3595	3601	3601	3607
19	Operating Lever	1	2724	2724	2724	2724	2724	2724
20	Socket For 1/2" Piston	1	2712	2712	2712	2712	2712	2712
21	Socket For 3/4" Piston	1	2713	2713	2713	2713	2713	2713
22	Pump Piston Pin	2	2539	2539	2539	2539	2539	2539
23	Pin Ring 3/8	4	2540	2540	2540	2540	2540	2540
24	Pump Piston Clip	2	2535	2535	2535	2534	2534	2534
25	1/2" Pump Piston	1	2718	2718	2718	2718	2718	2718
26	Pump Back Up Washer	1	*	*	*	*	*	*
27	Pump Piston Cup	1	*	*	*	*	*	*
28	Pump Cup Washer	1	*	*	*	*	*	*
29	Pump Cup Nut	1	3845	3845	3845	3845	3845	3845
30	1/2" Pump Piston Packing Complete	1	*	*	*	*	*	*
31	Pump Gland	1	0544	0544	0544	0544	0544	0544
32	Pump Packing	1	*	*	*	*	*	*
33	1/2" Pump Barrel	1	0546	0546	0546	0546	0546	0546
34	"O" Ring	2	*	*	*	*	*	*
35	1/4" Ball	2	2549	2549	2549	2549	2549	2549
36	Pump Valve Block	2	0727	0727	0727	0727	0727	0727
37	"O" Ring	2	*	*	*	*	*	*
38	3/16" Ball	2	0548	0548	0548	0548	0548	0548
39	Pump Valve Block Spring	2	4008	4008	4008	4008	4008	4008
41	Pump Block Gasket	2	0550	0550	0550	0550	0550	0550
42	1/2" Pump Assy. Comp.	1	2727	2727	2727	2727	2727	2727
43	Hobble For 3/4" Piston	1	2743	2743	2743	2743	2743	2743
44	3/4" Pump Piston	1	2719	2719	2719	2719	2719	2719
45	Pump Pstn Backup Washer	1	*	*	*	*	*	*
46	Pump Piston "O" Ring	1	*	*	*	*	*	*
47	3/4" Pump Barrel	1	2723	2723	2723	2723	2723	2723
48	3/4" Pump Assy. Comp.	1	2730	2730	2730	2730	2730	2730
49	Handle Socket Pin 1/2"	1	2740	2740	2740	2740	2740	2740
50	Pin Ring 1/2"	2	2741	2741	2741	2741	2741	2741
51	Socket Post	1	6579	6579	6579	6579	6579	6579
52	Spirol Pin 5/16 X 2-1/4	1	3827	3827	3827	3827	3827	3827
53	11/32 Ball	4	4219	4219	4219	4219	4219	4219
54	1/2-13 X 3/8 Soc. Set Screw	4	3638	3638	3638	3638	3638	3638
55	Safety Valve Ball 3/16	1	0548	0548	0548	0548	0548	0548
56	Safety Valve Spring Plunger	1	2215	2215	2215	2215	2215	2215
57	Safety Valve Spring	1	2216	2216	2216	2216	2216	2216
58	Safety Valve Screw	1	2217	2217	2217	2217	2217	2217
59	Valve Seal	2	*	*	*	*	*	*
60	Valve Seal Screw	2	2543	2543	2543	2543	2543	2543
61	Safety By-Pass Valve Assembly	1	2849	2849	2849	2849	2849	2849
62	Release Valve Ball 9/32	2	2526	2526	2526	2526	2526	2526
63	Release Valve Packing	2	*	*	*	*	*	*
64	Release Valve Screw	2	2527	2527	2527	2527	2527	2527
65	Release Valve Assembly	2	2524	2524	2524	2524	2524	2524
66	Oil Strainer	2	4010	4010	4010	4010	4010	4010
67	Oil Filler Screw Assy.	1	2544	2544	2544	2544	2544	2544
68	Pump Valve Block Assy.	1	0726	0726	0726	0726	0726	0726
69	Oil Filler & Breather Model Decal	1	6652*	6653*	6651*	6654*	6655*	6656*
	Packing Kit	1	6620	6620	6620	6680	6680	6699

* Contained In Packing Kit - Not Sold Separately