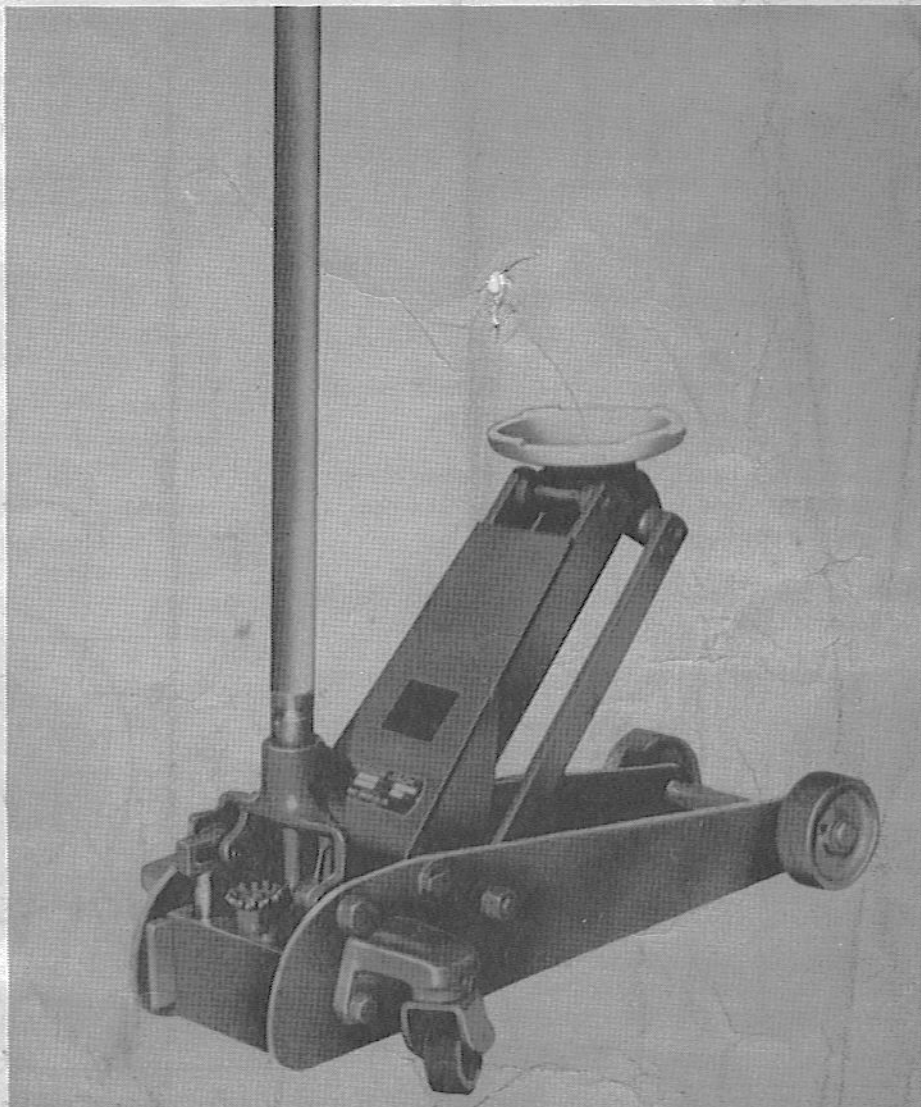


Sears

OWNERS
MANUAL

MODEL NO.
250.12000

CAUTION:
Read Rules for
Safe Operation
and Instructions
Carefully



1½ TON CAPACITY FLOOR SERVICE JACK

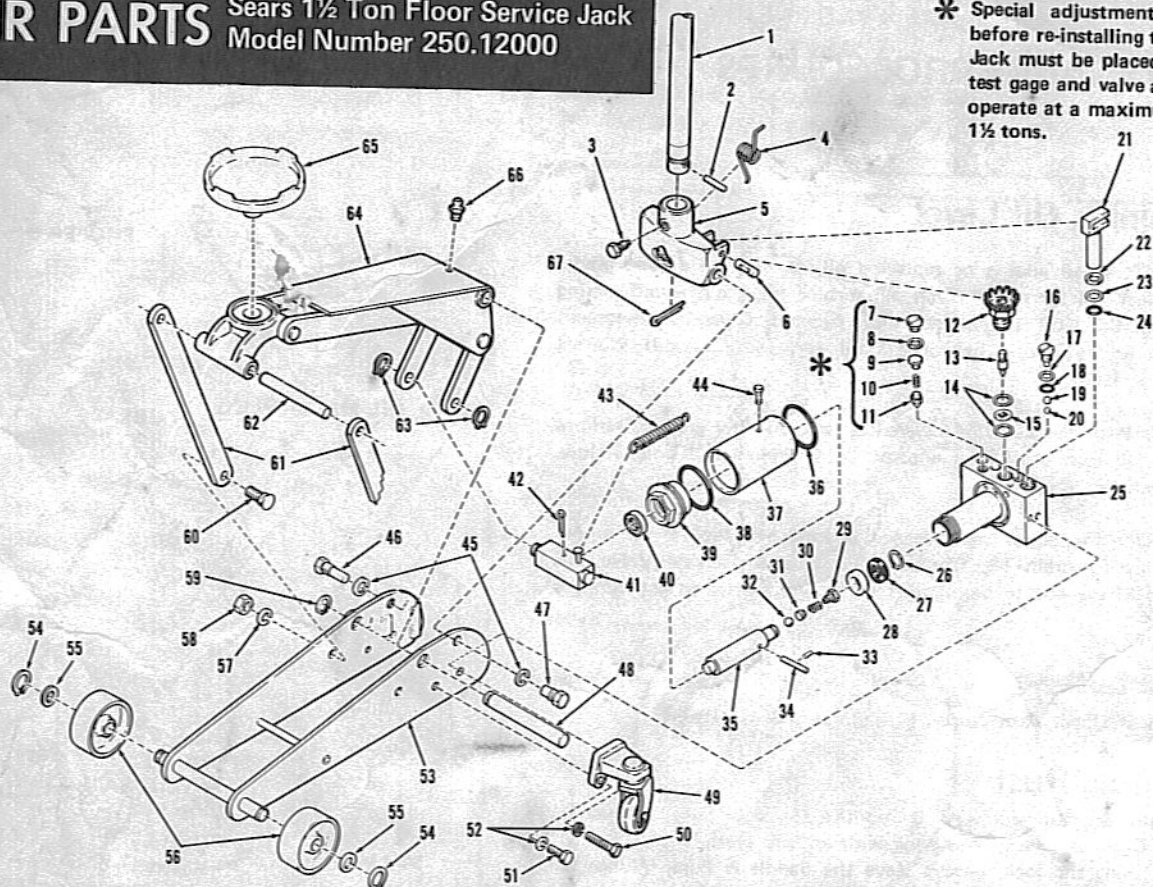
Operation
Repair Parts

Sears, Roebuck and Co., Chicago, IL. 60684 U.S.A.

REPAIR PARTS

Sears 1½ Ton Floor Service Jack
Model Number 250.12000

* Special adjustment required before re-installing these parts. Jack must be placed on a load test gage and valve adjusted to operate at a maximum load of 1½ tons.



Key No.	Part No.	Description	Key No.	Part No.	Description	Key No.	Part No.	Description
1	215005	Handle	24	215027	O-Ring	47	215067	Shaft (A) handle
2	STD571812	Pin, Spring	25	215050	Oil box assy.	48	215068	Pin arm
3	023001	Set screw, handle	26	215051	Ring, snap	49	215080	Caster Assy.
4	024001	Spring	27	215052	Packing, U. type	50	031002	Bolt, 1/2-13 x 1 1/2"
5	215010	Handle fork assy.	28	215053	Retainer, ram packing	51	031003	Bolt, 1/2-13 x 1 1/8"
6	027002	Connecting pin plunger	29	215054	Screw, by-pass	52	STD551150	Lockwasher, spring
7	215011	Cap plug, safety overload valve	30	024003	Spring	53	215100	Frame assy.
8	215012	Packing, rubber	31	215056	Retainer, spring	54	215071	Ring, snap
9	215013	Retainer	32	029003	Ball, steel	55	022003	Washer
10	024002	Spring	33	215057	Valve pin, by-pass	56	215072	Wheel, front
11	215014	Valve, safety overload/Factory Adj.	34	027007	Limit pin, by-pass	57	STD551162	Lockwasher, spring
12	215015	Release valve assy.	35	215053	Rod, piston	58	021002	Nut
13	215016	Valve, release	36	215059	O-Ring	59	215073	Ring, snap
14	215017	Packing, copper	37	215061	Tank, oil reservoir	60	027004	Pin (B), link
15	215018	Collar	38	215062	O-Ring	61	215074	Rod, link
16	031001	Bolt	39	021001	Nut, tank	62	027005	Pin (A), link rod
17	215019	Ring, back up	40	028002	Seal, oil	63	215076	Ring, Snap
18	215021	O-Ring	41	215063	Connecting joint, piston	64	215120	Arm Assy.
19	029001	Ball, steel-delivery valve	42	STD561220	Cotter Pin	65	215121	Saddle
20	029002	Ball, steel-suction valve	43	024004	Spring	66	215122	Grease nipple
21	215024	Plunger, pump	44	215064	Plug, oil filter	67	STD560607	Pin, cotter
22	028001	Seal, oil	45	STD551175	Lockwasher, spring			
23	215026	Ring, back up	46	215066	Shaft (B) handle			

Model Number 250.12000

The Model Number and Serial Number will be found on the Arm Assembly near the Grease Nipple. Always mention the Model Number and Serial Number when requesting service or repair parts for your Jack.

How to Order Repair Parts

All parts listed herein may be ordered from SEARS, ROEBUCK AND CO., c/o Repair Parts Dept. 98. When

ordering parts by mail, selling prices will be furnished on request, or parts will be shipped at current selling prices and you will be billed accordingly.

WHEN ORDERING REPAIR PARTS, ALWAYS GIVE THE FOLLOWING INFORMATION:

1. PART NUMBER
2. MODEL NUMBER
250.12000
3. PART DESCRIPTION
4. NAME OF ITEM
1½ Ton Floor Service Jack

Sears, Roebuck and Co., Chicago, IL. 60684 U.S.A.

RULES FOR SAFE OPERATION

To purge any air from the hydraulic system, open Release Valve (by turning handle counter-clockwise), then operate pump handle several times.

Raising the Jack

1. Close Release Valve **TIGHTLY** (by turning handle clockwise)
2. Position jack under load so that saddle will contact load firmly and is centered so it cannot slip.
3. Operate jack handle until saddle approaches contact with load. Once again check to see that saddle is correctly positioned.
4. Raise load to desired height. Transfer to Jack Stands if load is to be held up for an extended period.

CAUTION

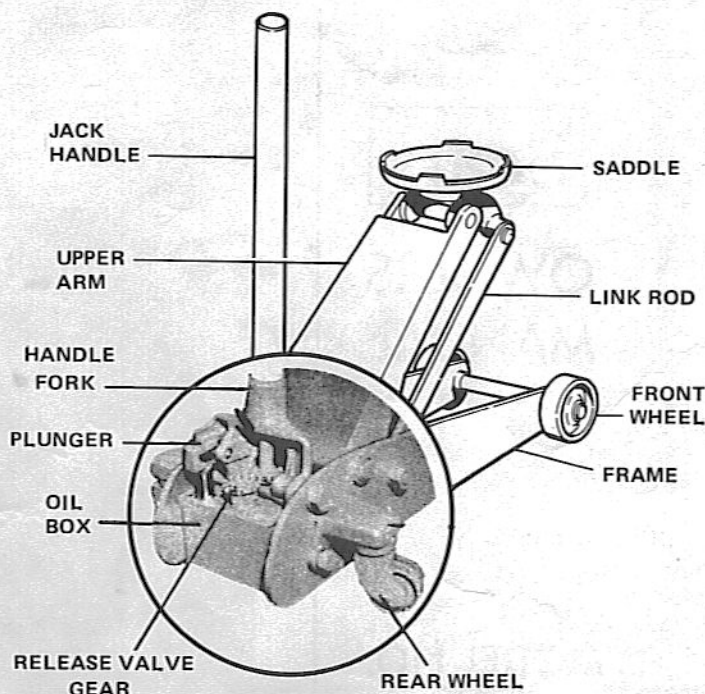
THIS JACK IS DESIGNED FOR JACKING PURPOSES ONLY. AFTER JACKING, ALWAYS USE SAFETY STANDS TO SUPPORT LOAD BEFORE MAKING REPAIRS. **FOR YOUR SAFETY-DO NOT OVERLOAD THIS JACK BEYOND ITS RATED CAPACITY.**

Lowering the Jack

Open Release Valve **VERY SLOWLY** (by turning handle counter-clockwise). When Release Valve is opened, saddle can be easily lowered by hand or foot.

FULL 90 DAY WARRANTY

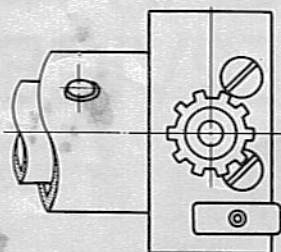
For 90 days from date of purchase, Sears will repair any defect in material or workmanship in your Floor Service Jack free of charge. To obtain service under this warranty, simply return the jack to any Sears store or Service Center throughout the United States.



GENERAL
NOMENCLATURE

HYDRAULIC SYSTEM PARTS

- (A) JACK HANDLE
- (B) PLUNGER
- (C) TANK, RESERVOIR
- (D) OIL STRAINER
- (E) SUCTION VALVE
- (F) DELIVERY VALVE
- (G) CYLINDER
- (H) RELEASE VALVE
- (I) GEAR-DRIVE, RELEASE VALVE
- (J) GEAR-DRIVEN, RELEASE VALVE
- (K) SAFETY OVERLOAD VALVE
- (L) BY-PASS VALVE
- (M) RELEASE SPRING
- (N) RAM



Operating Principles

With Release Valve (H) **TIGHTLY CLOSED:**

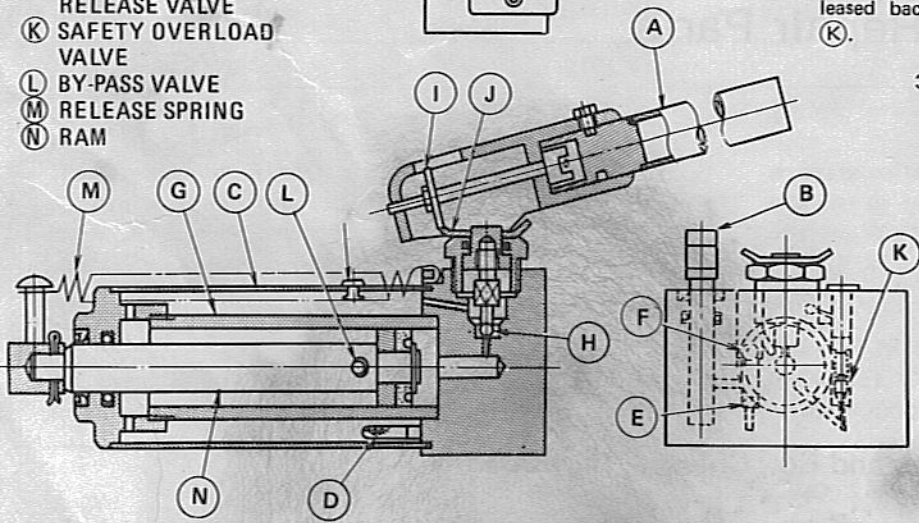
1. Upward stroke draws oil from Reservoir Tank (C) thru Suction Valve Ball (E) into Plunger Cavity. Hydraulic pressure keeps Valve (F) closed, keeping oil in cylinder.

2. Downward stroke of Plunger (B) forces oil into Cylinder thru Delivery Valve Ball (F). Ram (N) is forced out, raising saddle.

If load exceeds rated capacity, oil is automatically released back into Reservoir thru Safety Overload Valve (K).

3. When Ram (N) reaches maximum stroke, oil is by-passed back into Reservoir thru By-Pass Valve (L), thus preventing over-extended Ram Stroke.

When Release Valve (H) is opened, oil is allowed to flow back into Reservoir, releasing hydraulic pressure on Ram and permitting saddle to be lowered.



MAINTENANCE PROCEDURES

Maintaining Oil Level

IMPORTANT: When adding or replacing oil, always use a good grade, Hydraulic Jack Oil (or transmission oil, turbine oil, etc.). Avoid mixing types of oil. **DO NOT** use Brake Fluid, Alcohol, Glycerine, detergent motor oil, or dirty oil. Improper fluid can cause serious internal damage to Jack.

Adding Oil: With Saddle fully lowered & jack on level ground, remove Filler Cap. Oil level should be approx. 3/16" below cap hole. If low, add oil as needed.

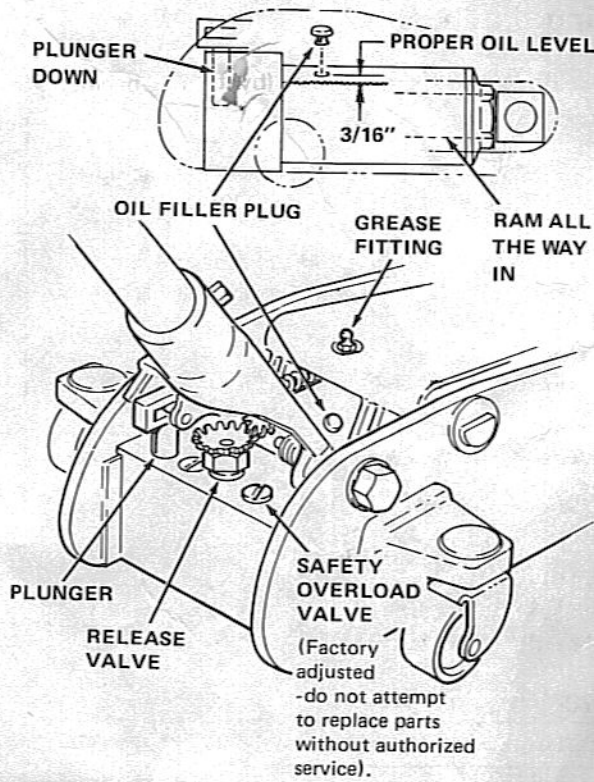
Replacing Oil: for better performance & long life, replace oil supply once a year. To drain oil, remove Filler Plug & Release Valve. **BE VERY CAREFUL** not to permit dirt or foreign matter to get into the system.

Lubrication

Add grease to Upper Arm Grease Fitting every 3 months.

Preventing Rust

Check Ram & Plunger every 3 months for any signs of rust or corrosion. Clean as needed and wipe with an oily cloth. When not using the jack, always leave the Saddle & Pump Plunger all the way down.



TROUBLE SHOOTING (USING JACK WITHIN RATED LOAD CAPACITY)

TROUBLE	POSSIBLE CAUSE	REMEDY
Will not lift load at all	1) No Oil in system 2) Release Valve not closed 3) Delivery Valve and/or By-Pass Valve not functioning 4) Defective Packings ("O" rings)	1) Fill to prescribed level 2) Turn handle clockwise tightly 3) Check for dirt or foreign matter – clean 4) Replace Packings
Will lift load only part way	5) Oil level low	5) Fill to prescribed level
Will lift load, but will not hold	6) The following Valve or Valves leaking: (a) Suction Valve, (b) Delivery Valve, (c) Release Valve, (d) By-Pass Valve 7) Packings worn out or defective	6) Inspect Valves – clean and adjust as needed 7) Replace Packings
Jack will not lower	8) Release Valve stuck – probably dirt or foreign matter	8) Transfer load & clean Release Valve
Poor lifting	9) Defective Pump Packings and/or Valves malfunctioning. 10) Dirty Oil 11) Air in Hydraulic System	9) Clean Valves, replace Packings 10) Change Hydraulic Oil 11) Purge Air from system