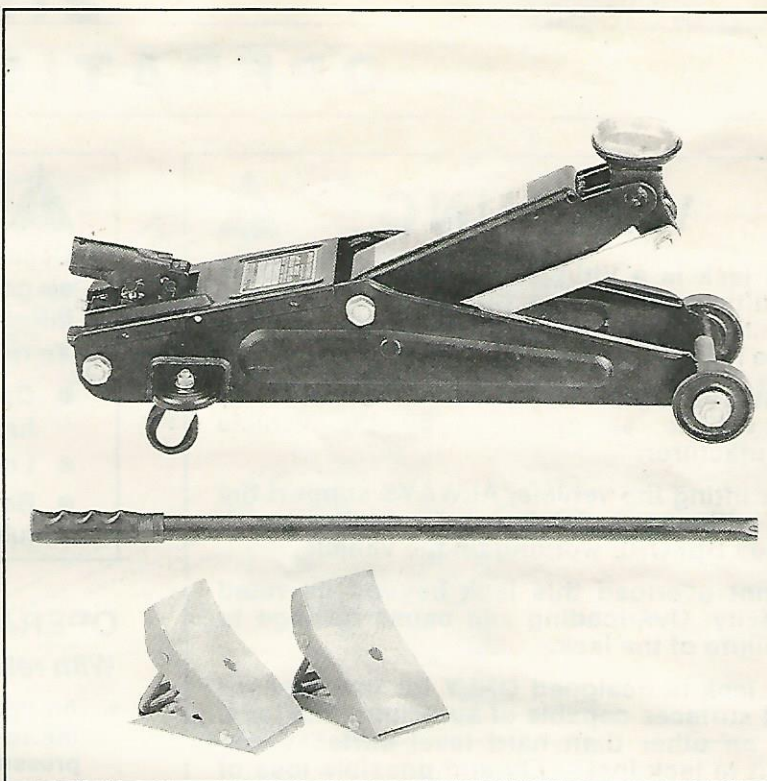


SEARS

**OWNERS
MANUAL**

**MODEL NO.
214.12114**

CAUTION:
Carefully Read
Instructions and
Procedures for
Safe Operation



SEARS/CRAFTSMAN®
**5000 LB. CAPACITY
SERVICE JACK**
AND
WHEEL CHOCKS

*Meets Guidelines of American National Standard
ASME/ANSI PALD-10B-1991 – SERVICE JACKS*

**Operation
Maintenance
Repair Parts
Warranty**

OPERATION

! WARNING !

- This jack is a lifting device designed **ONLY** for lifting part of the total vehicle (ie., one wheel). Do not move or dolly the vehicle while it is on the jack.
- Position this jack to **ONLY** lift on the areas of the vehicle as specified by the vehicle manufacturer.
- After lifting the vehicle, **ALWAYS** support the load with appropriately rated vehicle support stands **BEFORE** working on the vehicle.
- Do not overload this jack beyond its rated capacity. Overloading can cause damage to or failure of the jack.
- This jack is designed **ONLY** for use on hard level surfaces capable of sustaining the load. Use on other than hard level surfaces can result in jack instability and possible loss of load.
- Center load on jack saddle **BEFORE** lifting vehicle. Off-center loads and loads lifted when the jack is not level can cause loss of load or damage to the jack.
- Study, understand and follow all instructions in this manual **BEFORE** operating the jack.
- Failure to heed these warnings may result in loss of load, damage to the jack and/or jack failure resulting in personal injury or property damage.
- Do not use this jack for any purpose other than that for which it is designed.

KNOW YOUR JACK

Compare these illustrations with your jack **BEFORE** operation to become familiar with the location of various jack components.

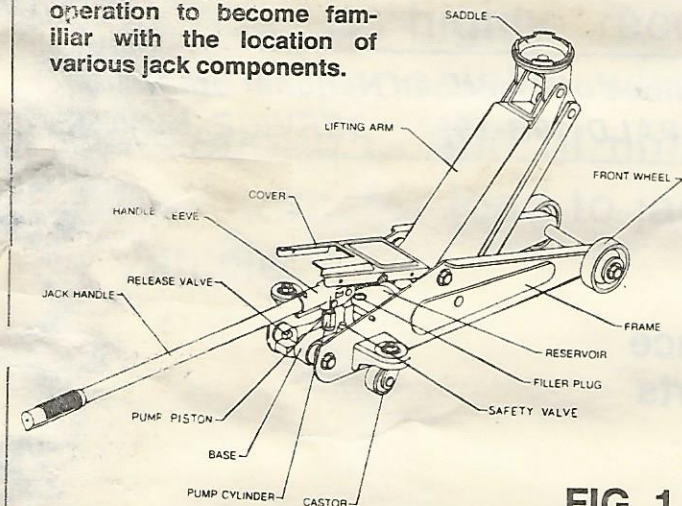


FIG. 1

! CAUTION BEFORE USING !

Occasionally during shipment and/or handling, air gets trapped in the hydraulic system, which interferes with the jack's lifting performance.

To release air from the hydraulic system:

- Open the release valve by turning the jack handle (See Fig. 1) counter-clockwise.
- Loosen oil filler plug.
- Rapidly pump jack handle through several full strokes.

OPERATING PRINCIPLES

With release valve CLOSED:

- An upward stroke of the jack handle draws oil from the reservoir tank into the plunger cavity. Hydraulic pressure holds the valve closed, which keeps the oil in the plunger cavity.
- A downward stroke of the jack handle releases oil into the cylinder, which forces the ram out. This raises the saddle. (NOTE: If the load exceeds the rated capacity, oil is automatically released back into the reservoir through the safety overload valve.)
- When the ram reaches maximum extension, oil is by passed back into the reservoir to prevent an over-extended ram stroke and possible damage to the jack.
- Opening the release valve allows oil to flow back into the reservoir. This releases hydraulic pressure on the ram, which results in lowering the saddle.

OPERATION

RAISING the Jack:

- With notched end of the jack handle (See Fig. 1) close release valve by turning the handle clockwise.
- Chock the vehicle's wheels (See Fig. 2) for lifting stability.
- Refer to the vehicle manufacturer owners manual to locate approved lifting points on the vehicle. Position jack so that the saddle (See Fig. 1) is centered under the load at an appropriate lift point.
- Pump jack handle until saddle **NEARS** contact with the vehicle. Check to see that the saddle is centered and will contact the load lifting point firmly.
- Continue to pump the jack handle to lift the vehicle to the desired height. After lifting, support the load with appropriately rated vehicle support stands **BEFORE** working on the vehicle.

LOWERING the Jack:

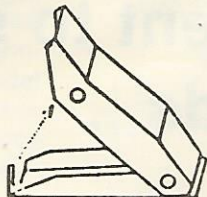
- With notched end of jack handle, **SLOWLY** open the release valve by turning the handle counter-clockwise.

CAUTION: KEEP HANDS AND FEET CLEAR OF GROUND CONTACT AREA WHEN LOWERING THE LOAD!

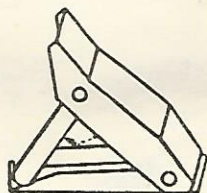
OPERATION

HOW TO USE

a. Unfold and pull out support bar to stop.



b. Lock support bar in groove



c. Always use Wheel Chocks in pairs to help prevent movement forward and backward.

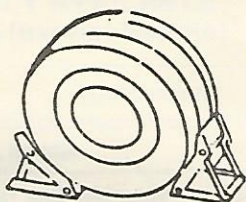


FIG. 2

PLEASE READ AND UNDERSTAND THESE INSTRUCTIONS AND WARNINGS. FAILURE TO DO SO MAY RESULT IN PERSONAL INJURY OR PROPERTY DAMAGE.

REPLACEMENT CHOCKS ARE AVAILABLE IN PAIRS ONLY.

LUBRICATION:

Add oil to all moving parts as needed.



WARNING



- WHEEL CHOCKS ARE DESIGNED FOR USE ON HARD, LEVEL SURFACES.
- DO NOT ATTEMPT TO RAISE VEHICLE BY DRIVING ONTO THE WHEEL CHOCK.
- USE COMMON SENSE AND CAUTION WHEN WORKING ON OR AROUND A VEHICLE THAT HAS BEEN LIFTED.



CAUTION



- Foldable Wheel Chocks have been designed to use in conjunction with all lift equipment to help provide a SAFE, STABLE LIFTING CONDITION.
- Foldable Wheel Chocks ARE NOT support devices and SHOULD NOT be used to raise or to permanently secure a vehicle to prevent movement.
- ALWAYS use appropriately rated jack stands to support the load before working on the vehicle.
- Place automatic transmission in PARK, place manual shift selector in gear with the emergency brake engaged.
- ALWAYS use in pairs, ONE PAIR PER TIRE.
- ALWAYS position foldable wheel chocks so each is centered on the tread of the tire. Off center positioning COULD CAUSE SUDDEN INSTABILITY, RESULTING in personal injury and/or property damage.

MAINTENANCE

MAINTAINING OIL LEVEL

Important Note: When adding or replacing oil, ALWAYS use a good grade Hydraulic Jack oil. DO NOT use Hydraulic Brake Fluid, Alcohol, Glycerine, Detergent Motor Oil or dirty oil. Use of an improper fluid can cause serious internal damage to your jack.

ADDING OIL:

- Position the jack on level ground and fully lower the saddle. Remove oil filler plug (See Fig. 3).
- Oil level should be just over the cylinder. If low, add oil as needed.

REPLACING OIL:

- To drain oil, remove oil filler plug and open release valve. Turn jack over and drain old oil out through the oil filler plug hole.
- Refill with new oil through the oil filler plug hole. DO NOT allow dirt or other foreign material to enter the hydraulic system when filling.
- After refilling, remove any air from the hydraulic system by opening the release valve and rapidly pumping the jack handle several times.

LUBRICATION:

- Add lubricating oil to all moving parts as needed.

KNOW YOUR JACK

Compare these illustrations with your jack before operation and/or oil level maintenance to become familiar with the location of jack components.

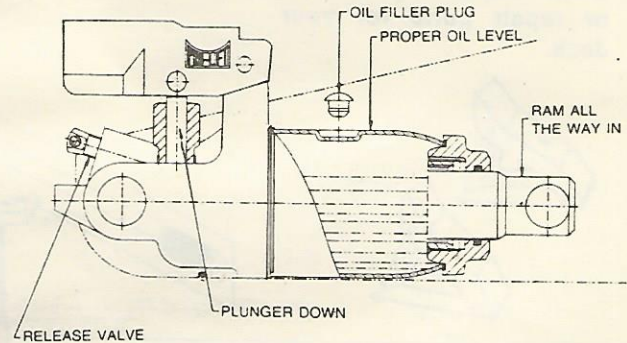


FIG. 3

PREVENTING RUST

- Check ram and pump plunger (See Fig. 3) every few months for any signs of rust or corrosion. Clean as needed and wipe with an oily cloth.
- When not in use. ALWAYS store jack with saddle and pump plunger lowered all the way down.

PROBLEM-SOLVING HINTS

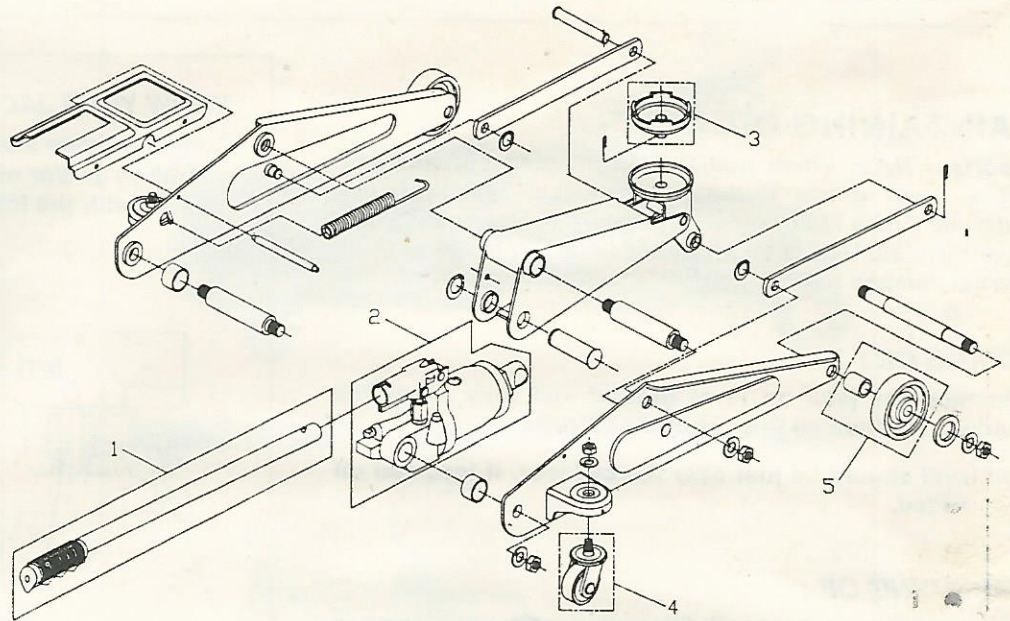
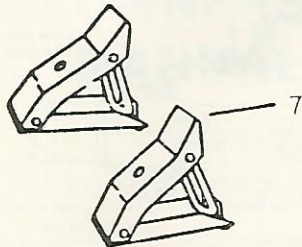
POSSIBLE JACK PROBLEMS						POSSIBLE CAUSES AND SOLUTIONS (Refer to Operation and Maintenance procedures for detailed information)
Jack will not lift load	Jack will lift load, but will not hold	Jack will not lower completely	Poor jack lifting. Pump feels spongy	Jack will not lift to full height	Handle raises by itself when jack is under load	
X						Release valve not tightly closed. To close or tighten, turn release valve clockwise.
X			X	X	X	Air is in hydraulic system. Release air from system.
X	X		X	X		Oil level is low in jack. Add oil as required.
		X				1. Oil reservoir is over-filled. Drain out some oil. 2. Lubrication of moving parts is necessary.
X	X		X			Power unit is malfunctioning. Replace the power unit.

REPAIR PARTS

Sears 5000 Lb. Capacity Service Jack
and Wheel Chocks
Model Number 214.12114

Model Number 214.12114

The Model Number and Serial Number will be found on the lifting arm. Always mention the Model Number and Serial Number when requesting service or repair parts for your Jack.



PARTS ARE ONLY AVAILABLE IN ASSEMBLIES (except Saddle)

Key	Parts No.	Description
1	1211401	Jack handle
2	1211402	Power unit assembly
3	1211403	Saddle
4	1211404	Rear wheel assembly
5	1211405	Front wheel with bushing
6	1211406	Owners manual
7	1211407	Wheel chock

How to Order Repair Parts

All assemblies listed above may be ordered from any Sears Service Center and most Sears store.

WHEN ORDERING REPAIR PARTS,
ALWAYS GIVE THE FOLLOWING
INFORMATION:

- REPAIR PART NUMBER
- REPAIR PART DESCRIPTION
- MODEL NUMBER 214.12114
- NAME OF ITEM: 5000 Lbs. Capacity Service Jack

IF THE PARTS YOU NEED ARE NOT STOCKED LOCALLY, YOUR ORDER WILL BE ELECTRONICALLY TRANSMITTED TO A SEARS REPAIR PARTS DISTRIBUTION CENTER FOR EXPEDITED HANDLING.

FULL ONE YEAR WARRANTY

If this service jack fails due to a defect in material or workmanship within one year from date of purchase, return it to the nearest Sears Store in the United States and Sears will replace it free of charge.

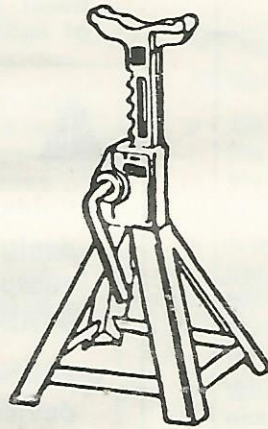
If this service jack is used for rental or commercial purposes, the warranty will apply for thirty days from date of purchase.

Warranty service is available by returning the complete unit to the nearest Sears store in the United States.

This warranty gives you specific legal rights. You may also have other rights which vary from state to state.

SEARS MERCHANDISE GROUP, 3333 BEVERLY RD, HOFFMAN ESTATES, IL 60179.

**Sears has equipment to suit your
vehicle lifting needs...**



Jack stands

Special Note: When using floor jack, the use of jack stands is highly recommended for a measure of safety...especially when load is to be held for an extended period of time. Raise vehicle with floor jack, then transfer load to jack stands to support and steady vehicle.