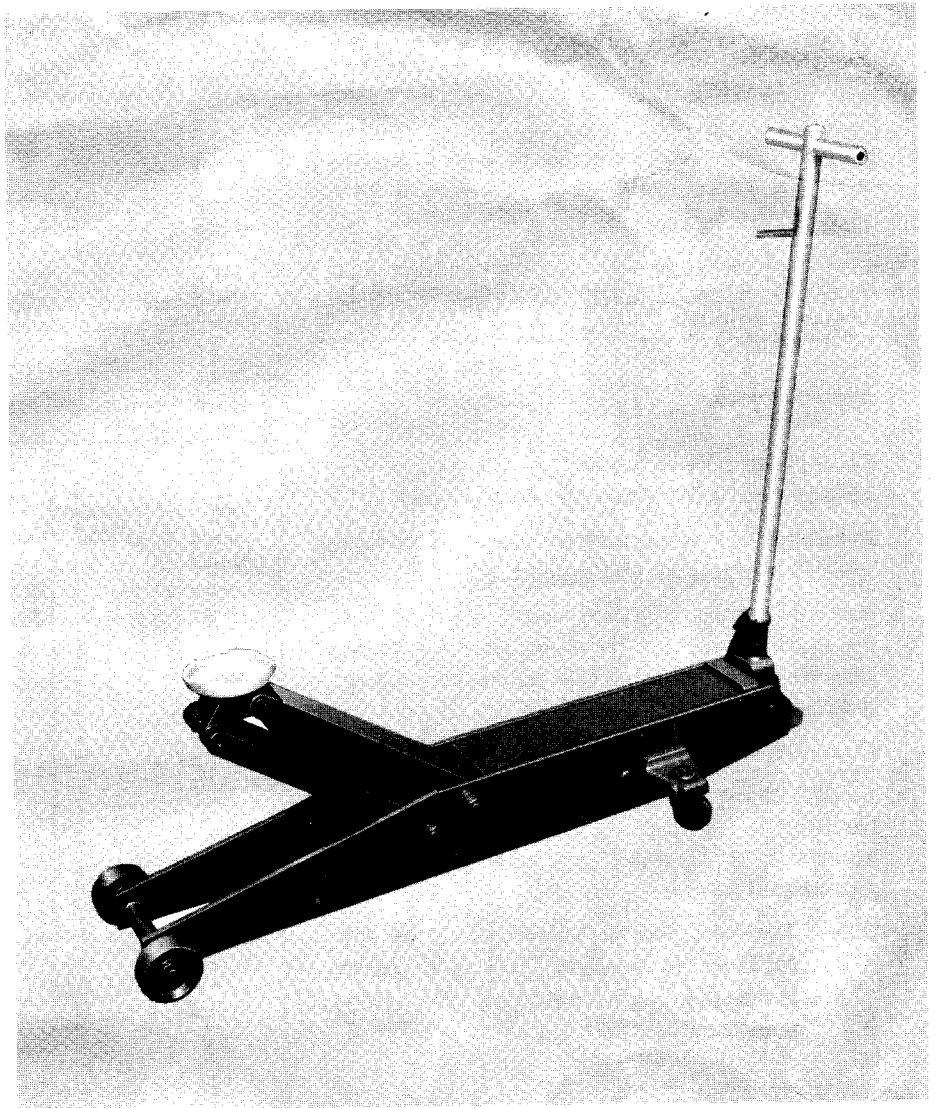


Sears

**OWNERS
MANUAL**

**MODEL NO.
328.12060**

CAUTION:
Read Rules for
Safe Operation
and Instructions
Carefully



4 TON CAPACITY FLOOR SERVICE JACK

Operation
Repair Parts

Part No. 9006

Sears, Roebuck and Co., Chicago, IL. 60684 U.S.A.

Printed in Japan

RULES FOR SAFE OPERATION

IMPORTANT: Sometimes during shipment and/or handling, air gets into the hydraulic system, causing poor lifting performance. This is indicated by a springy feel as you pump the jack under a load. **PURGE ANY AIR FROM THE SYSTEM** by simply opening Release Valve (turn the control lever right towards the notch (b)) and operate pump handle rapidly several times.

Raising the jack

1. Close Release Valve (by shifting the control lever up and turn it clockwise towards the notch (a))
2. Place the jack underneath of the load pointing the saddle of jack at jacking point.
3. Put the foot pedal down several times so that the saddle to reach to the jacking point, or operate jack handle until the saddle approaches contact with load.
4. Check to see that saddle is correctly positioned.
5. Raise load to desired height by operating jack handle.
Transfer to jack stands if load is to be held up for an extended period.

[NOTE] The foot pedal is available for raising jack conveniently by foot until the saddle approaches contact with load. For raising load, operate handle.

Lowering the Jack

Open Release Valve **VERY SLOWLY** (by turning handle counter-clockwise). When Release Valve is opened, saddle can be easily lowered by hand or foot.

Operating Principles

With Release Valve **TIGHTLY CLOSED**:

1. Upward stroke draws oil from Reservoir Tank into Plunger Cavity. Hydraulic pressure keeps Valve closed, keeping oil in cylinder.
2. Downward stroke of Plunger forces oil into Cylinder. Ram is forced out, raising saddle.

If load exceeds rated capacity, oil is automatically released back into Reservoir thru Safety Overload Valve.

3. When Ram reaches maximum stroke, oil is by-passed back into Reservoir, thus preventing overextended Ram Stroke.

When Release Valve is opened, oil is allowed to flow back into Reservoir, releasing hydraulic pressure on Ram and permitting saddle to be lowered.

CAUTION

THIS JACK IS DESIGNED FOR JACKING PURPOSES ONLY. AFTER JACKING, ALWAYS USE SAFETY STANDS TO SUPPORT LOAD BEFORE MAKING REPAIRS. **FOR YOUR SAFETY—DO NOT OVERLOAD THIS JACK BEYOND ITS RATED CAPACITY.**

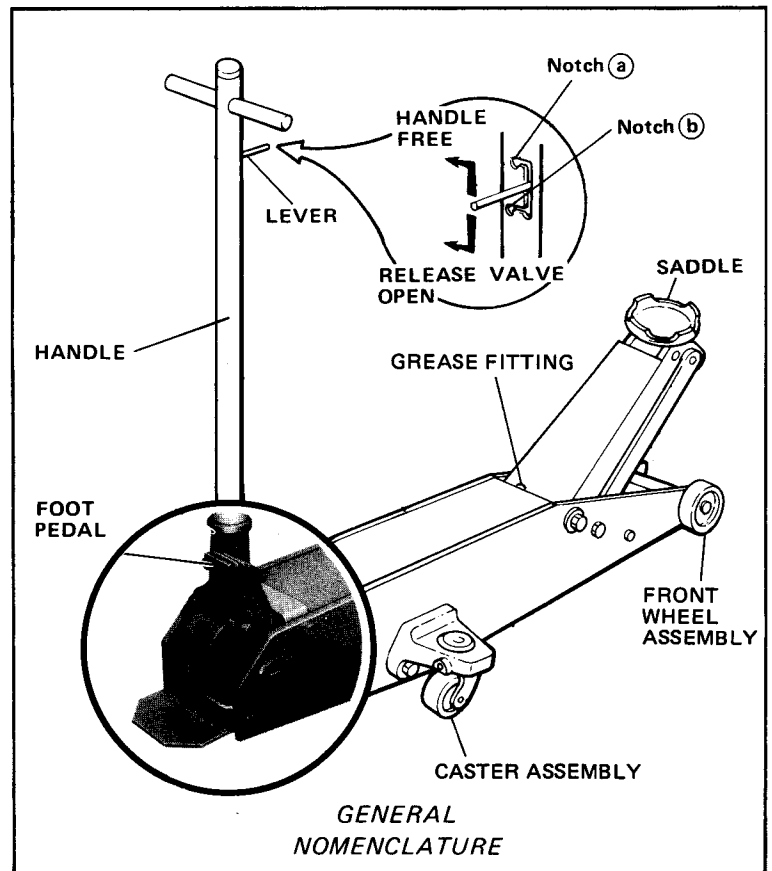


Fig. 1

MAINTENANCE PROCEDURES

Maintaining Oil Level

IMPORTANT: When adding or replacing oil, always use a good grade Hydraulic Jack Oil. **DO NOT** use Brake Fluid, Alcohol, Glycerine, Detergent Motor Oil, or Dirty Oil. Improper fluid can cause serious internal damage to Jack.

Adding Oil: With Saddle fully lowered & jack on level ground, remove tank cover. (See Fig. 2) Oil level should be approx. 7/8" below cap hole. If low, add oil as needed.

Replacing Oil: To drain oil remove tank cover and release valve. (See Fig. 3) Turn jack over and pour old oil out. While refilling to 7/8 of an inch below cap hole, be very careful not to permit dirt or foreign matter to get into system. After refilling be sure to purge any air from the system by opening release valve (turn the control lever right toward the notch **(b)**) and operate pump handle rapidly several times.

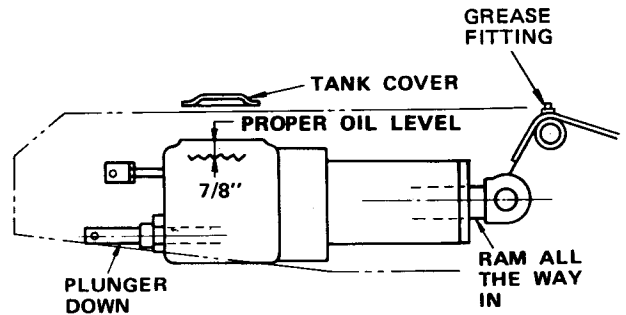


Fig. 2

Lubrication

Add grease to Upper Arm Grease Fitting every 3 months. (See Fig. 2)

Preventing Rust

Check Ram & Plunger every 3 months for any signs of rust or corrosion. Clean as needed and wipe with an oily cloth.

When not using the jack, always leave the Saddle & Pump Plunger all the way down.

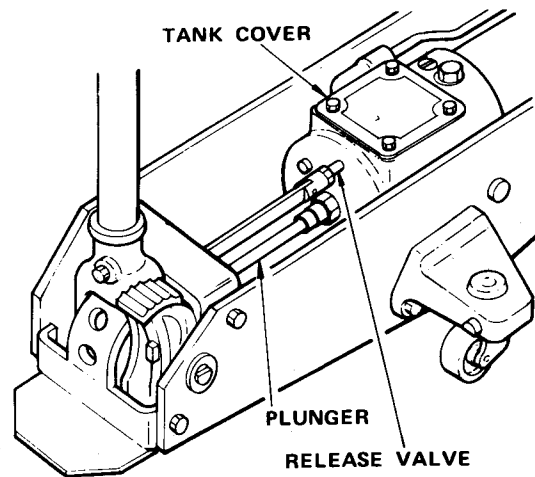


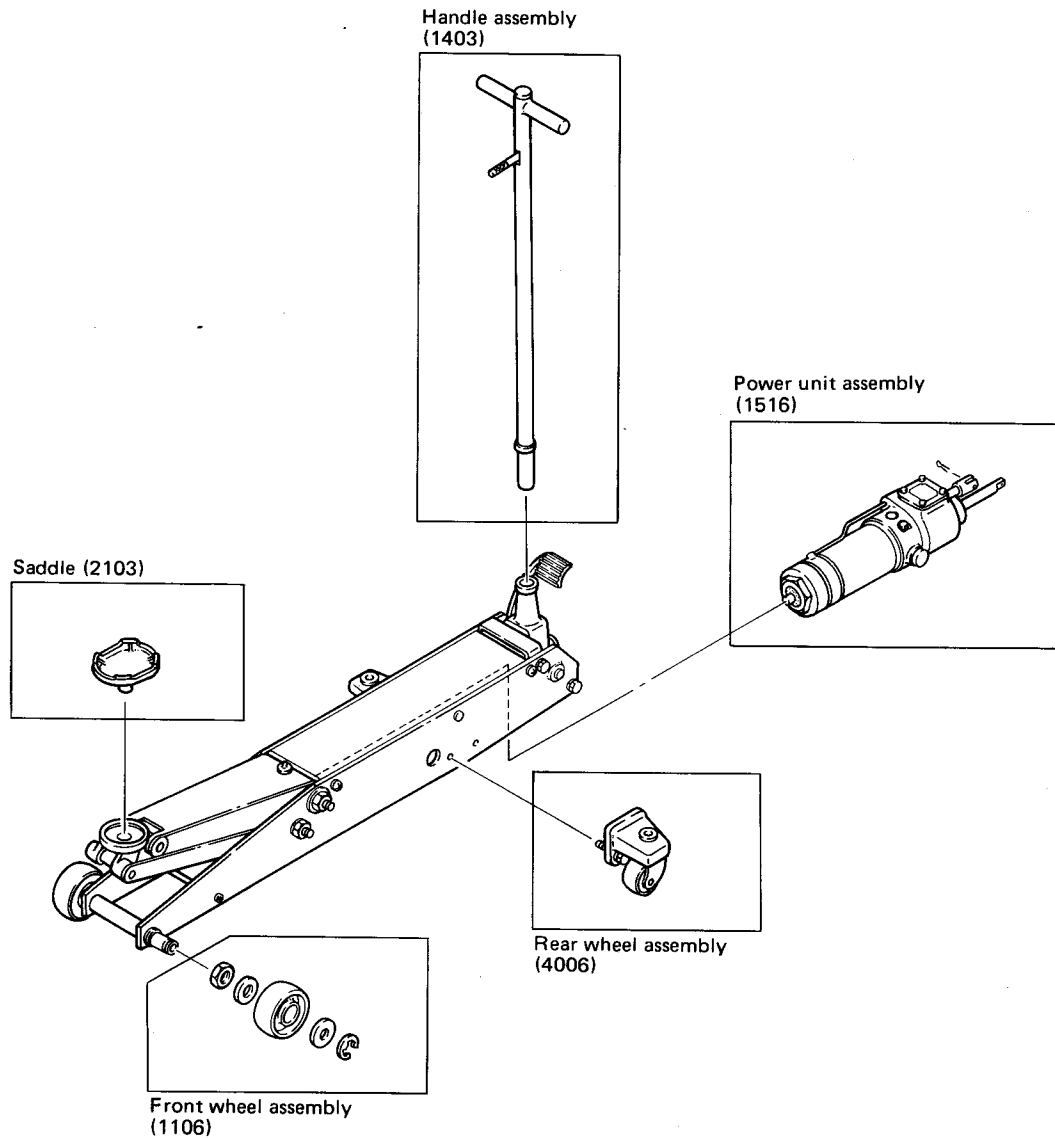
Fig. 3

TROUBLE SHOOTING (USING JACK WITHIN RATED LOAD CAPACITY)

TROUBLE	POSSIBLE CAUSE	REMEDY
Will not lift load at all	1) No or low Oil in system 2) Power unit not functioning	1) Fill to prescribed level 2) Replace power unit
Will lift load only part way	3) Oil level low	3) Fill to prescribed level
Will lift load, but will not hold	4) Power unit not functioning	4) Replace power unit
Jack will not lower	5) Release Valve stuck — probably dirt or foreign matter	5) Transfer load & clean Release Valve
Poor lifting	6) Dirty Oil 7) Air in Hydraulic System	6) Change Hydraulic Oil 7) Purge Air from system by simply opening Release Valve (turn the control lever right towards the notch (b)) and operate pump handle rapidly several times.

REPAIR PARTS

Sears 4 Ton Floor Service Jack
Model Number 328.12060



PARTS ARE AVAILABLE IN ASSEMBLIES ONLY (EXCEPT SADDLE)

Part No.	Description	Part No.	Description
1106	Front wheel assembly	2103	Saddle
1403	Handle assembly	4006	Caster assembly
1516	Power unit assembly	9006	Owners manual

Model Number 328.12060

The Model Number and Serial Number will be found on the Frame Assembly. Always mention the Model Number and Serial Number when requesting service or repair parts for your Jack.

How to Order Repair Parts

All assemblies listed herein may be ordered from any SEARS Service Center and Most Sears Stores.

WHEN ORDERING REPAIR PARTS, ALWAYS GIVE THE FOLLOWING INFORMATION:

- | | | | |
|-----------------|-----------|---------------------|--------------------------|
| 1. PART NUMBER | 328.12060 | 3. PART DESCRIPTION | 4 Ton Floor Service Jack |
| 2. MODEL NUMBER | | 4. NAME OF ITEM | |

IF THE PARTS YOU NEED ARE NOT STOCKED LOCALLY, YOUR ORDER WILL BE ELECTRONICALLY TRANSMITTED TO A SEARS REPAIR PARTS DISTRIBUTION CENTER FOR EXPEDITED HANDLING.

Sears, Roebuck and Co., Chicago, IL. 60684 U.S.A.