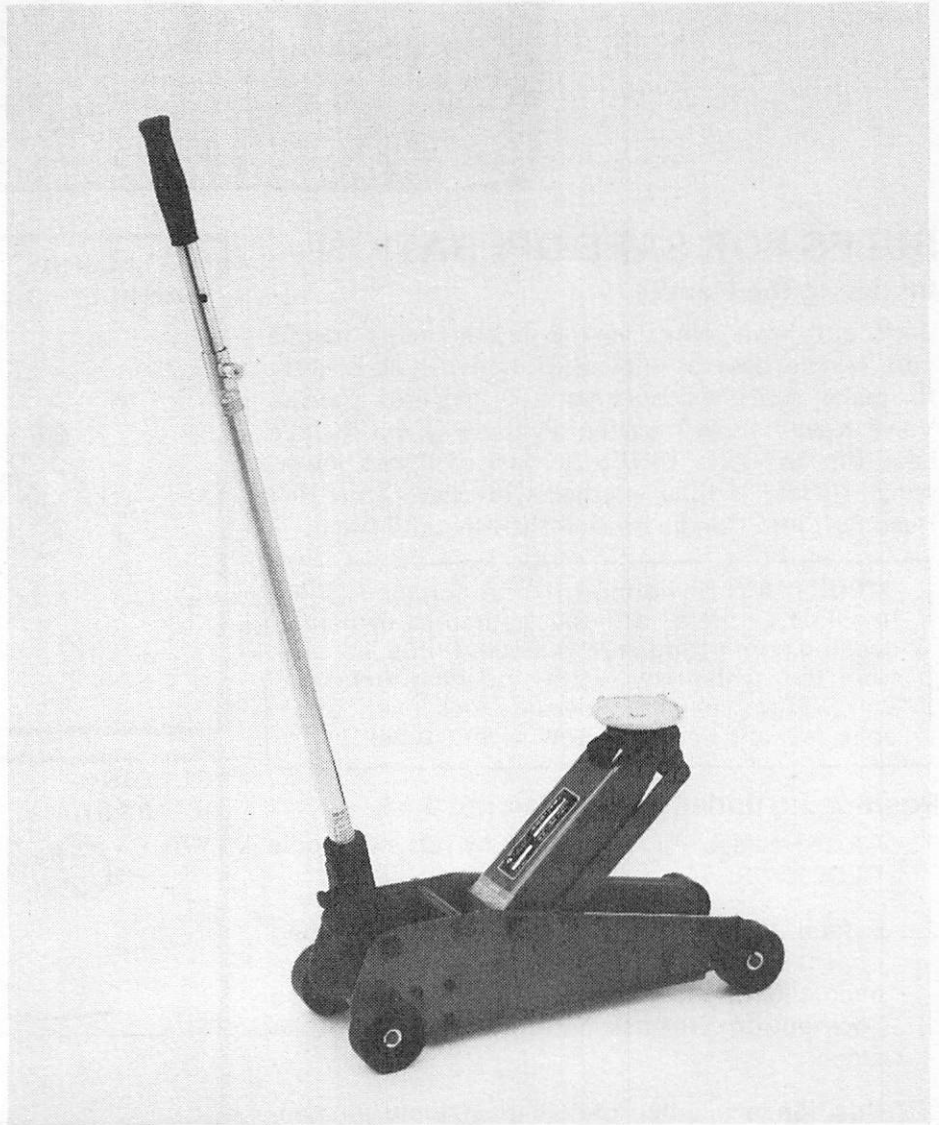


Sears

OWNERS
MANUAL

MODEL NO.
250.12610

CAUTION:
Read Rules for
Safe Operation
and Instructions
Carefully



1 1/2 TON CAPACITY FLOOR SERVICE JACK

Operation
Repair Parts

CAUTION

THIS JACK IS DESIGNED FOR JACKING PURPOSES ONLY. AFTER JACKING, ALWAYS USE SAFETY STANDS TO SUPPORT LOAD BEFORE MAKING REPAIRS. FOR YOUR SAFETY—DO NOT OVERLOAD THIS JACK BEYOND ITS RATED CAPACITY.

RULES FOR SAFE OPERATION

Installing the Handle

Back out lower Hex Head Bolt and insert handle into handle base as shown. Rotate handle slightly to make sure hex opening fully engages Release Valve Key. Handle must be all the way into handle base (up to RED LINE) or Jack will not lower. When Handle is fully engaged with Key, Turn Hex Head Bolt into Handle Base all the way until snug.

IMPORTANT: Sometimes during shipment and handling, air gets into the hydraulic system, causing poor lifting performance. Purge any air from the system by simply opening Release Valve (turn handle counter-clockwise) and operate pump handle rapidly several times.

Positioning under Load & Raising Jack

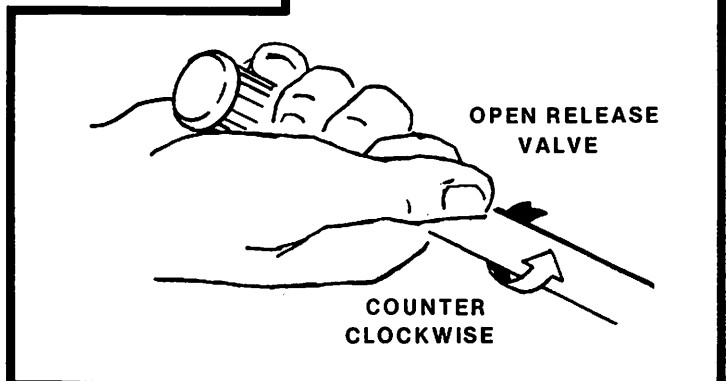
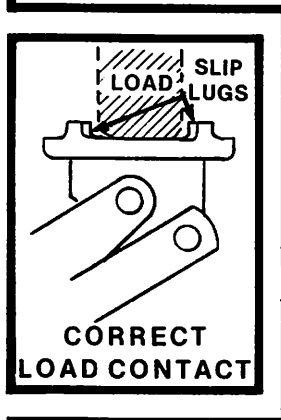
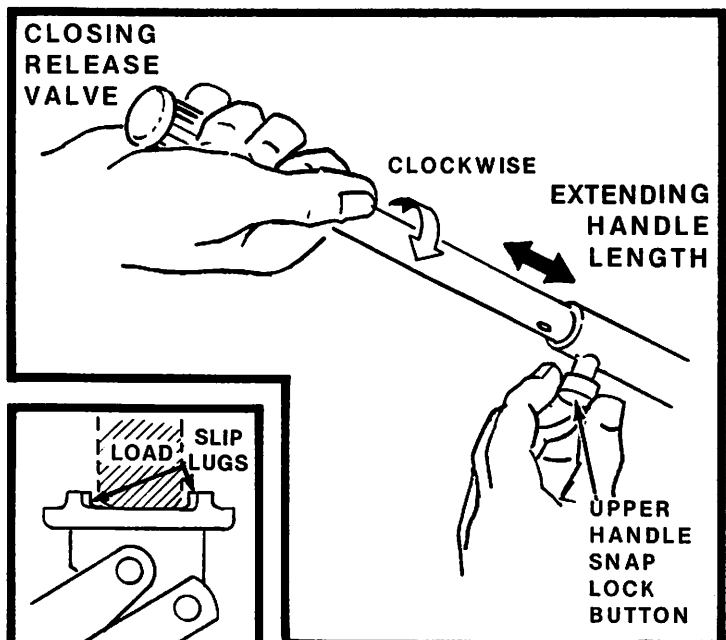
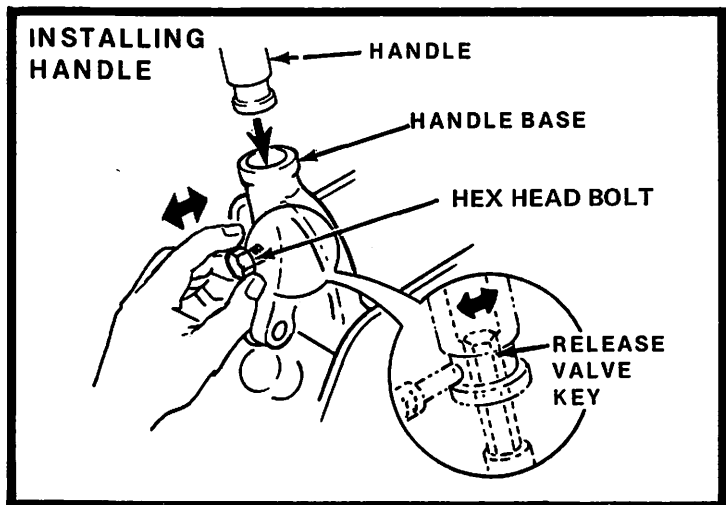
1. Close Release Valve **TIGHTLY** by turning handle **CLOCKWISE**.
2. Extend handle length if needed by releasing upper handle Snap Lock and pulling out upper handle until mating hole lines up with Snap Lock button. Release button to lock handle in place.
3. Position jack under load so that saddle will contact load firmly and is centered by slip lugs so it cannot slip.
4. Operate jack handle until saddle approaches contact with load. Once again, check to see that saddle is correctly positioned and load is "LOCKED IN" by Slip Lugs. Raise load to desired height.

Lowering the Jack

Open Release Valve **VERY SLOWLY** by turning handle **COUNTER-CLOCKWISE**.

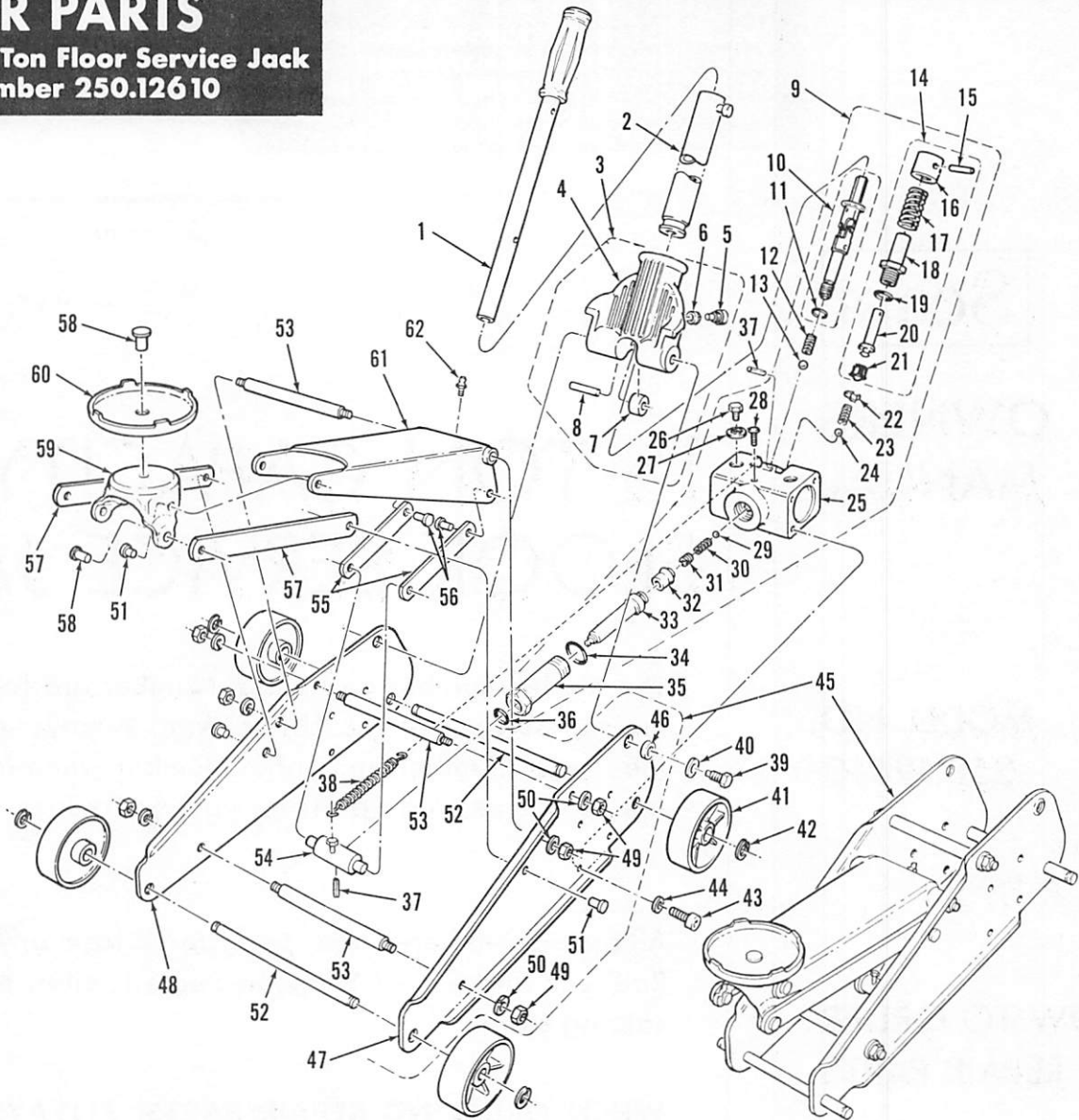
MAINTENANCE PROCEDURES

IMPORTANT: When adding or replacing oil, always use a good grade hydraulic jack oil. Avoid mixing types of oil. **DO NOT** use Brake Fluid, Alcohol, Glycerine, detergent motor oil or dirty oil. Improper fluid can cause serious internal damage to jack. When adding oil, be **VERY CAREFUL** not to permit dirt or any foreign matter to get into the system. Check Ram and Plunger every 3 months for any signs of rust or corrosion. Clean as needed and wipe with an oily cloth. When not using the jack, always leave the Saddle all the way down



REPAIR PARTS

Sears 1 1/2 Ton Floor Service Jack
Model Number 250.12610



KEY NO.	PART NO.	DESCRIPTION	KEY NO.	PART NO.	DESCRIPTION	KEY NO.	PART NO.	DESCRIPTION
1	212005	Upper Handle Assy	23	4009	Spring	44	STD551125	Lockwasher
2	212010	Lower Handle Assy	24	9001	Check Ball - 7/32"	45	213005	Frame & Elevator Arm Assy-incl:
3	213010	Handle Base Assy - <u>incl:</u>	25	213032	Oil Block			Bushing
4	213011	Handle Base	26	3043	Bolt-Filler Plug, Hex Hd 5/16-18	46	213013	Plate-Left Side
5	3047	Bolt-Hex Head 1/4-20	27	8011	Stat-O-Seal	47	212202	Plate-Right Side
6	10001	Insert-1/4-20	28	3002	Screw-Self Tap 1/4-20	48	212201	Plate-Right Side
7	212027	Roller	29	9001	Check Ball-7/32"	49	STD541150	Nut-Hex 1/2-20 UNF
8	STD572512	Pin-Roll	30	4005	Spring	50	STD551150	Lock Washer
9	213035	Oil Block Assy- <u>incl:</u>	31	3005	Screw-Spring Retainer	51	6005	Rivet
10	213015	Release Valve Assy <u>incl:</u>	32	8019	Cup Packing-Ram	52	212206	Axle
11	8018	"O" Ring	33	213026	Ram	53	212134	Pin-Hinge & Spacer
12	4004	Spring-Overload	34	8015	"O" Ring	54	212147	Trunion
13	9002	Check Ball - 1/4"	35	213030	Cylinder	55	212146	Arm-Trunion
14	213020	Pump Assy - <u>incl:</u>	36	8017	"O" Ring	56	6002	Rivet
15	7003	Pin	37	STD571207	Roll Pin	57	212163	Arm-Control
16	213023	Cap-Pump Piston	38	4006	Spring	58	6003	Rivet
17	4003	Spring	39	213014	Screw-Handle Base Mtg	59	212161	Saddle Base
18	213022	Body-Pump	40	2044	Lockwasher	60	212162	Saddle
19	8016	"O" Ring	41	212207	Wheel	61	212140	Arm-Elevator
20	213021	Piston-Pump	42	2003	Snap Ring	62	13001	Grease Fitting
21	8020	Cup Packing	43	3034	Screw - 1/4-20			
22	213033	Retainer-Pump Spring						

Sears

**OWNERS
MANUAL**

**MODEL NO.
250.12610**

**HOW TO ORDER
REPAIR PARTS**

1½ TON CAPACITY FLOOR SERVICE JACK

The Model Number and Serial Number are found on the top surface of the Lifting Arm. Always mention the Model Number and Serial Number when requesting service or repair parts for your Sears Jack.

All parts listed herein may be ordered from any Sears, Roebuck and Co. or Simpson-Sears Limited retail or catalog store.

**WHEN ORDERING REPAIR PARTS, ALWAYS GIVE
THE FOLLOWING INFORMATION:**

- | | |
|---------------------|---|
| 1. PART NUMBER | 3. MODEL NUMBER
250.12610 |
| 2. PART DESCRIPTION | 4. NAME OF ITEM —
1½ Ton Floor
Service Jack |

If the parts you need are not stocked locally, your order will be electronically transmitted to a Sears Repair Parts Distribution Center for expedited handling.