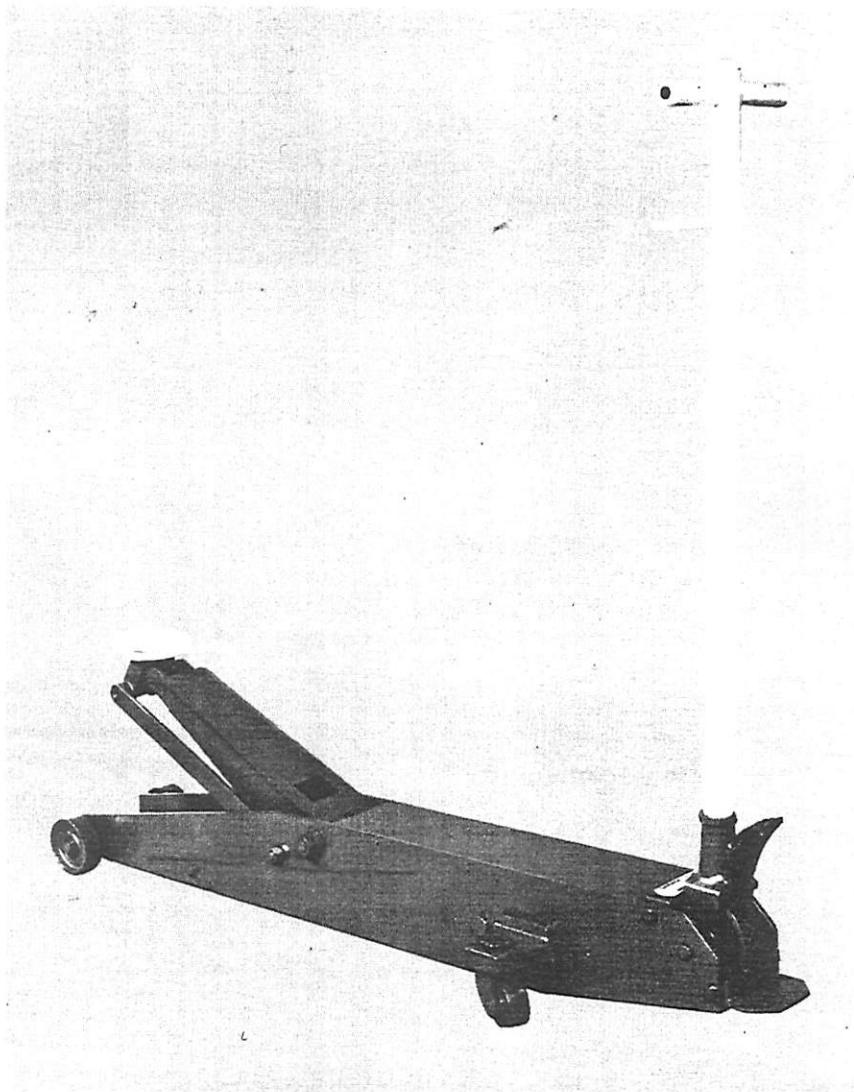


Sears

OWNERS  
MANUAL

MODEL NO.  
250.12010

CAUTION:  
Read Rules for  
Safe Operation  
and Instructions  
Carefully



3 TON CAPACITY  
FLOOR SERVICE JACK

Operation  
Repair Parts

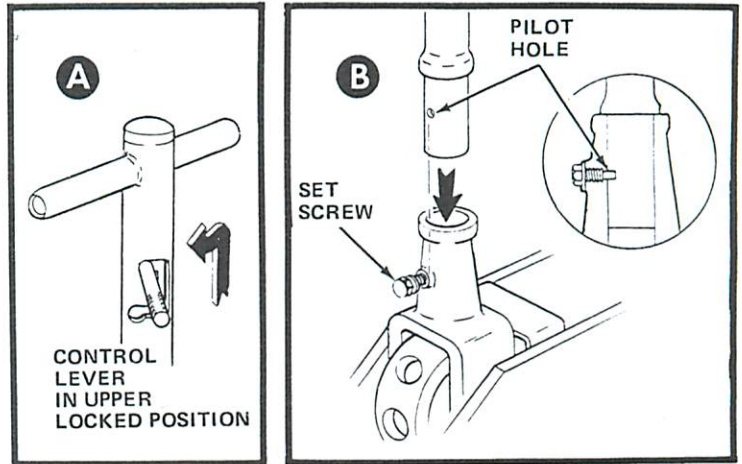
# CAUTION

THIS JACK IS DESIGNED FOR JACKING PURPOSES ONLY. AFTER JACKING, ALWAYS USE SAFETY STANDS TO SUPPORT LOAD BEFORE MAKING REPAIRS. FOR YOUR SAFETY—DO NOT OVERLOAD THIS JACK BEYOND ITS RATED CAPACITY.

## RULES FOR SAFE OPERATION

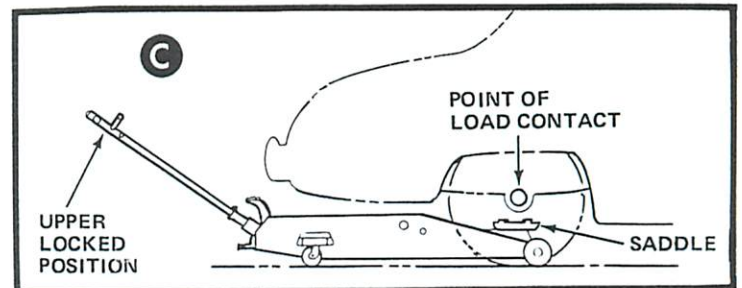
### Installing the Handle

1. Place Control Lever in UPPER LOCKED position as shown in A.
2. Back out Set Screw in Handle Fork and insert Handle, aligning small pilot hole with Set Screw as shown in B. Insert Handle until shoulder rests against Handle Fork, then rotate slightly as needed to align pilot hole. Securely tighten Set Screw.



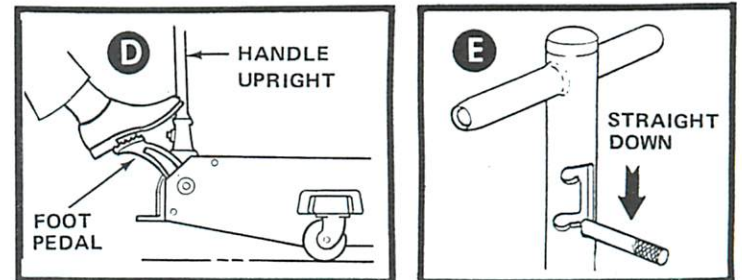
### Positioning Jack under load

3. With Control Lever in UPPER LOCKED position, (see A), wheel the jack into place using the Handle. Align the Saddle so it is centered approximately under the point of load contact as shown in C.
4. Raise the Saddle up to load contact by operating the Foot Pedal as shown in D.



**NOTE:** To operate Foot Pedal the Handle should be in the upright position ( $45^\circ$  will also work, but not as well) with the Control Lever in the STRAIGHT DOWN position as shown in E.

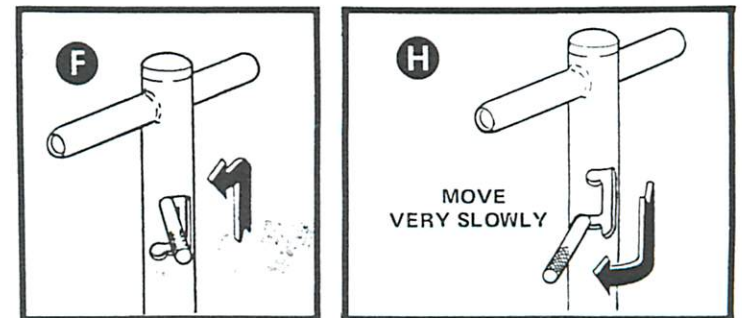
5. If the jack is placed so far under the vehicle that the Handle cannot be locked in the upright or  $45^\circ$  position, place the Control Lever in UPPER LOCKED position (see A) and raise the Saddle by pumping the Handle.



**WARNING:** When Saddle comes in contact with the load, be sure the load is held by the locking lugs on the Saddle. The load **must not** be in a position where it can slip off the Saddle.

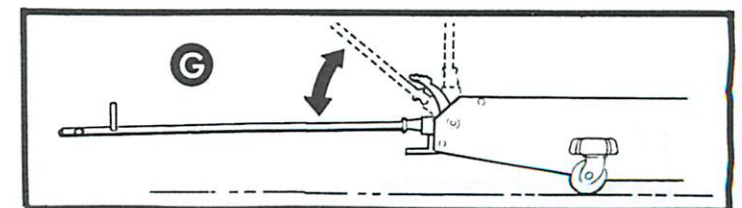
### Raising the Load

6. When the Saddle is correctly in contact with the load, move the Control Lever into the UPPER LOCKED position as shown in F. Raise the load by operating the Handle as shown in G.

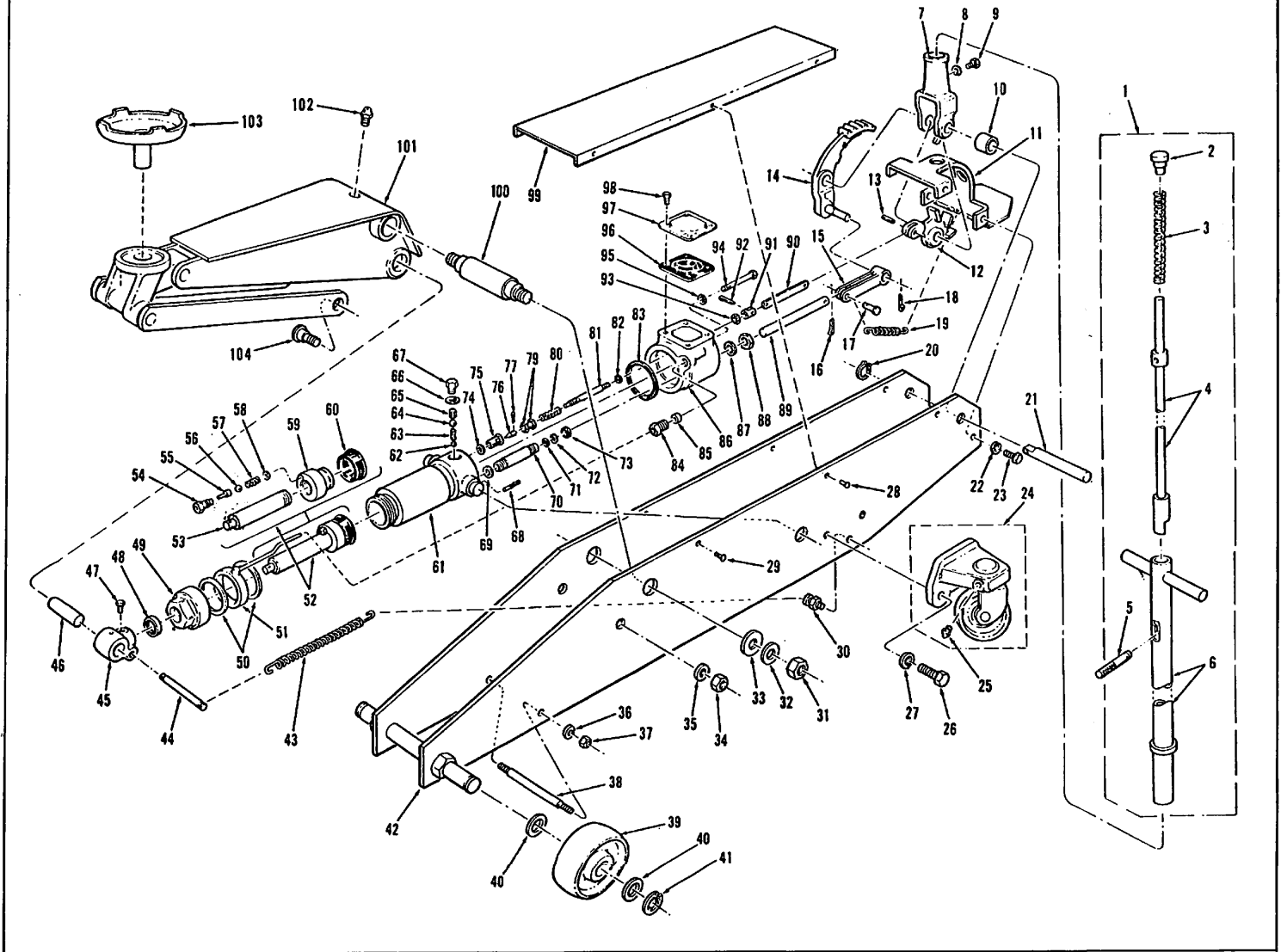


### Lowering the Load

7. Move the Control Lever VERY SLOWLY toward the LOWER LOCKED position as shown in H. This can be done only when the Handle is in one of the 3 locking positions (vertical,  $45^\circ$  or horizontal).



# REPAIR PARTS Sears 3 Ton Floor Service Jack Model Number 250.12010



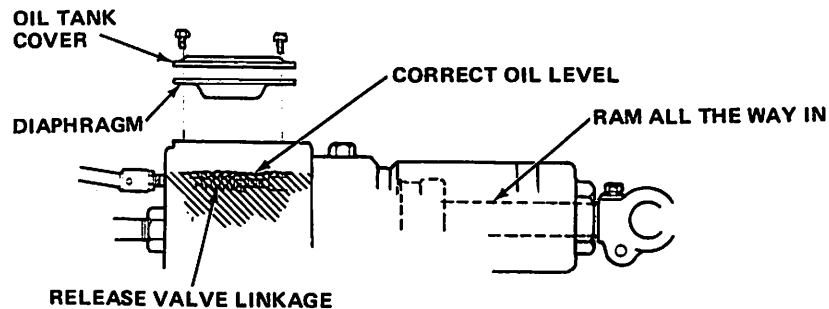
KEY NO.	PART NO.	DESCRIPTION	KEY NO.	PART NO.	DESCRIPTION	KEY NO.	PART NO.	DESCRIPTION	KEY NO.	PART NO.	DESCRIPTION
1	203010	Handle Assy <i>Includes:</i>	27	STD551150	Lockwasher	52	203320	Piston Rod Sub-Assy <i>Includes:</i>	79	203222	Locknut
2	203001	Handle Cap	28	203508	Rivet	53	203323	Piston Rod	80	203221	Spring
3	203002	Spring	29	203509	Screw	54	203329	Housing-Bypass Valve	81	203219	Connecting Pin-Release Valve
4	203003	Valve Control Rod	30	203511	Bolt-Spring retaining	55	203328	Rod-Bypass	82	203218	"O" Ring
5	203006	Valve Control Lever	31	203514	Nut	56	9007	Steel Ball - .188 dia.	83	203217	Rubber Packing
6	203004	Handle	32	203513	Washer	57	203326	Spring-Bypass	84	203216	Pipe Nipple
7	203016	Handle Fork	33	203512	Washer	58	203324	Copper Packing	85	203214	Cork Packing
8	203017	Lockwasher	34	21002	Nut	59	203322	Packing Retainer-Piston	86	203213	Oil Tank
9	203018	Set Screw-Handle	35	STD551162	Lockwasher	60	203321	Packing-"U" Type	87	203203	Rubber Packing
10	203034	Collar	36	STD551131	Lockwasher	61	203300	Oil Box & Cylinder Assy	88	203202	Cap Nut
11	203036	Bracket-Handle Fork	37	203101	Nut	62	9005	Check Ball - .313 dia.	89	203201	Pump Plunger
12	203037	Cam Step	38	203103	Arm Stopper	63	203302	Spacer-Check Ball	90	203204	Connecting Bar-Release Valve
13	STD571207	Roll Pin	39	215072	Front Wheel	64	9006	Check Ball - .500 dia.	91	203207	Fork
14	103031	Foot Pedal (w/pin)	40	22003	Washer	65	203304	Spacer-Check Ball	92	203206	Cotter Pin
15	203111	Connecting Bar	41	215071	Snap Ring	66	203306	Copper Packing	93	203222	Locknut
16	27006	Cotter Pin	42	203100	Frame Assy	67	203307	Cap Plug	94	203308	Bolt
17	203112	Pin-Connecting	43	203347	Spring	68	203234	Oil Strainer	95	203309	Washer
18	STD561210	Cotter Pin	44	203348	Shaft-Spring retaining	69	203233	Copper Packing	96	203212	Diaphragm
19	203108	Spring	45	203349	Connecting Joint-Piston	70	203232	Pump Cylinder	97	203211	Cover-Oil Tank
20	203502	Snap Ring	46	203351	Piston Pin	71	203231	"O" Ring	98	203209	Bolt
21	203501	Handle Shaft	47	203346	Bolt	72	203229	Back-up Ring	99	203379	Cover
22	203505	Lockwasher	48	203344	Packing Seal-Piston	73	203228	Rubber Packing-Plunger	100	203373	Arm Pin
23	203504	Bolt	49	203343	Tank Nut	74	203227	Copper Packing	101	203370	Arm & Link Assy
24	203050	Caster Assy <i>Includes:</i>	50	203341	Gasket-Fibre	75	203226	Housing-Release Valve	102	215122	Grease Nipple
25	203051	Grease Nipple	51	203342	Ring Assy	76	203224	Release Valve	103	203371	Saddle
26	31003	Bolt				77	STD560907	Cotter Pin	104	203352	Pin - Link Rod

# MAINTENANCE PROCEDURES

## Maintaining Oil Level

**IMPORTANT:** When adding or replacing oil, always use a good grade hydraulic jack oil (or transmission oil, turbine oil, non-detergent motor oil, etc.). Avoid mixing types of oil. **DO NOT** use Brake Fluid, Alcohol, Glycerine, detergent motor oil or dirty oil. Improper fluid can cause serious internal damage to jack.

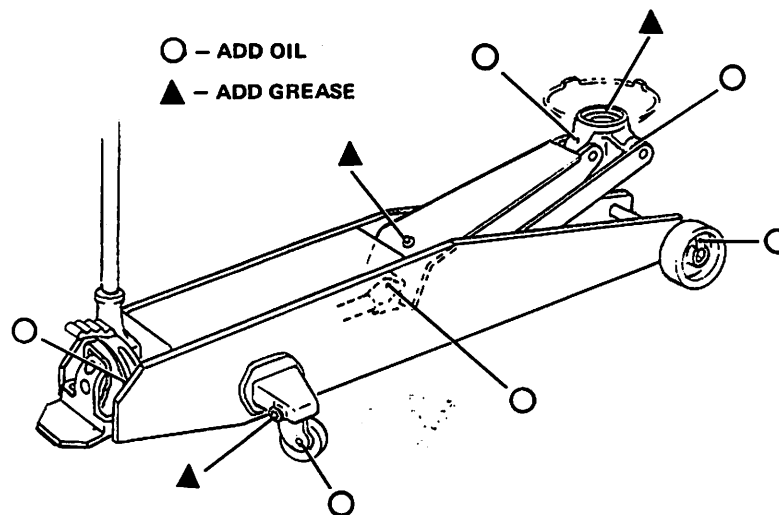
**Adding Oil:** With Saddle fully lowered and Jack on level ground, remove Oil Tank Cover & Diaphragm by removing 4 bolts. Oil level should be just high enough to cover over Release Valve linkage as shown.



**IMPORTANT:** When adding oil, be **VERY CAREFUL** not to permit dirt or any foreign matter to get into the system.

## Lubrication

For long life and efficient operation, add oil and grease about every 30 days to the points indicated in the diagram below.



## Preventing Rust

Check Ram and Plunger every 3 months for any signs of rust or corrosion. Clean as needed and wipe with an oily cloth. When not using the jack, always leave the Saddle all the way down and the Pump Plunger all the way in.

**Sears**

**OWNERS  
MANUAL**

**MODEL NO.  
250.12010**

**HOW TO ORDER  
REPAIR PARTS**

# 3 TON CAPACITY FLOOR SERVICE JACK

The Model Number and Serial Number are found on the Top Cover plate near the Handle Fork. Always mention the Model Number and Serial Number when requesting service or repair parts for your Sears Jack.

All parts listed herein may be ordered from any Sears, Roebuck and Co. or Simpson-Sears Limited retail or catalog store.

**WHEN ORDERING REPAIR PARTS, ALWAYS GIVE  
THE FOLLOWING INFORMATION:**

- |                     |  |
|---------------------|--|
| 1. PART NUMBER      | 3. MODEL NUMBER<br>250.12010                     |
| 2. PART DESCRIPTION | 4. NAME OF ITEM —<br>3 Ton Floor<br>Service Jack |

If the parts you need are not stocked locally, your order will be electronically transmitted to a Sears Repair Parts Distribution Center for expedited handling.