

Sears

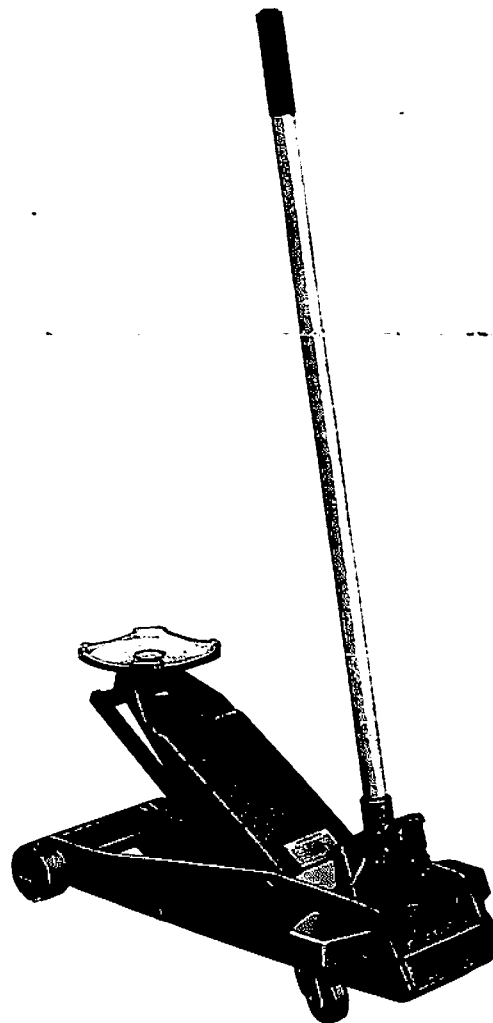
owners manual

SEARS
ROEBUCK & CO.
SERVICE JACK

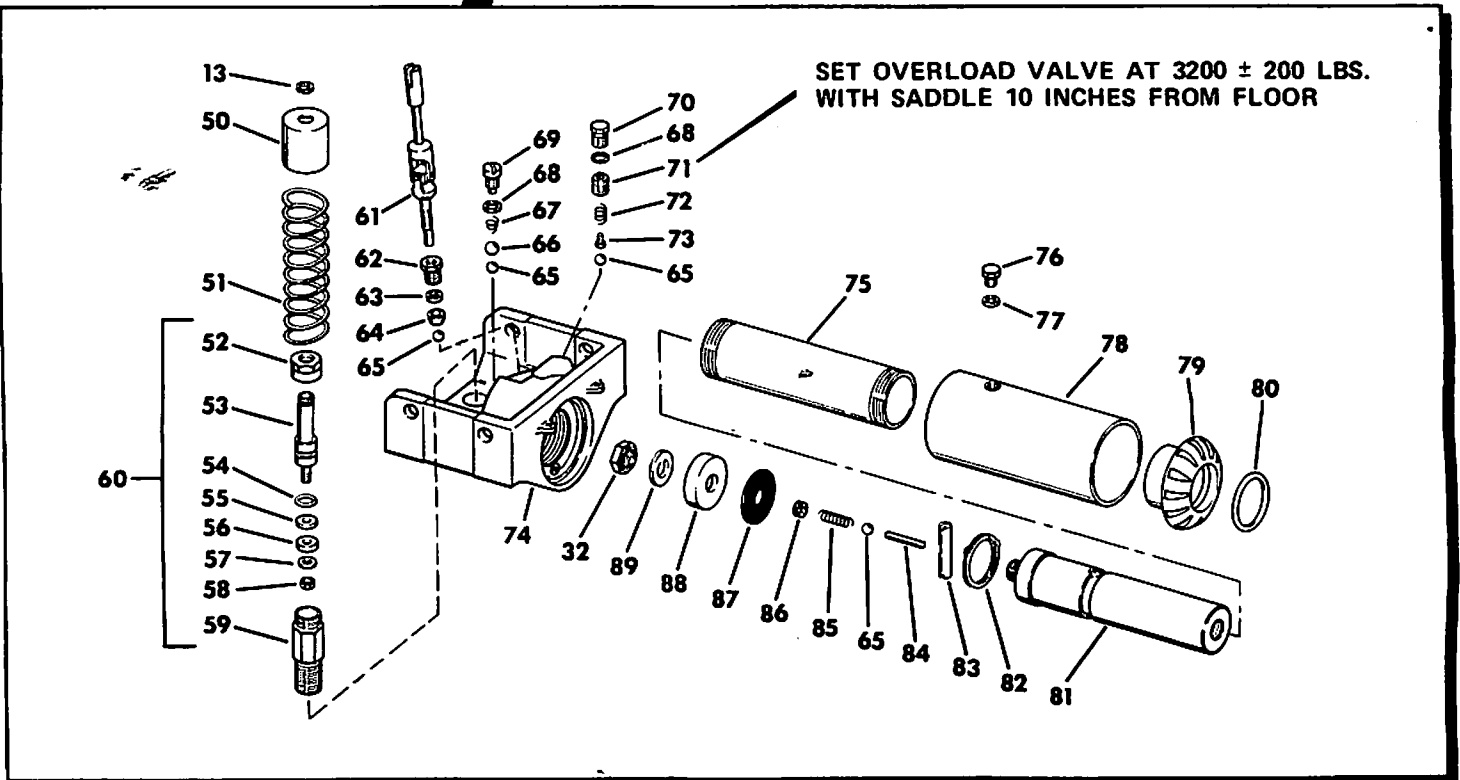
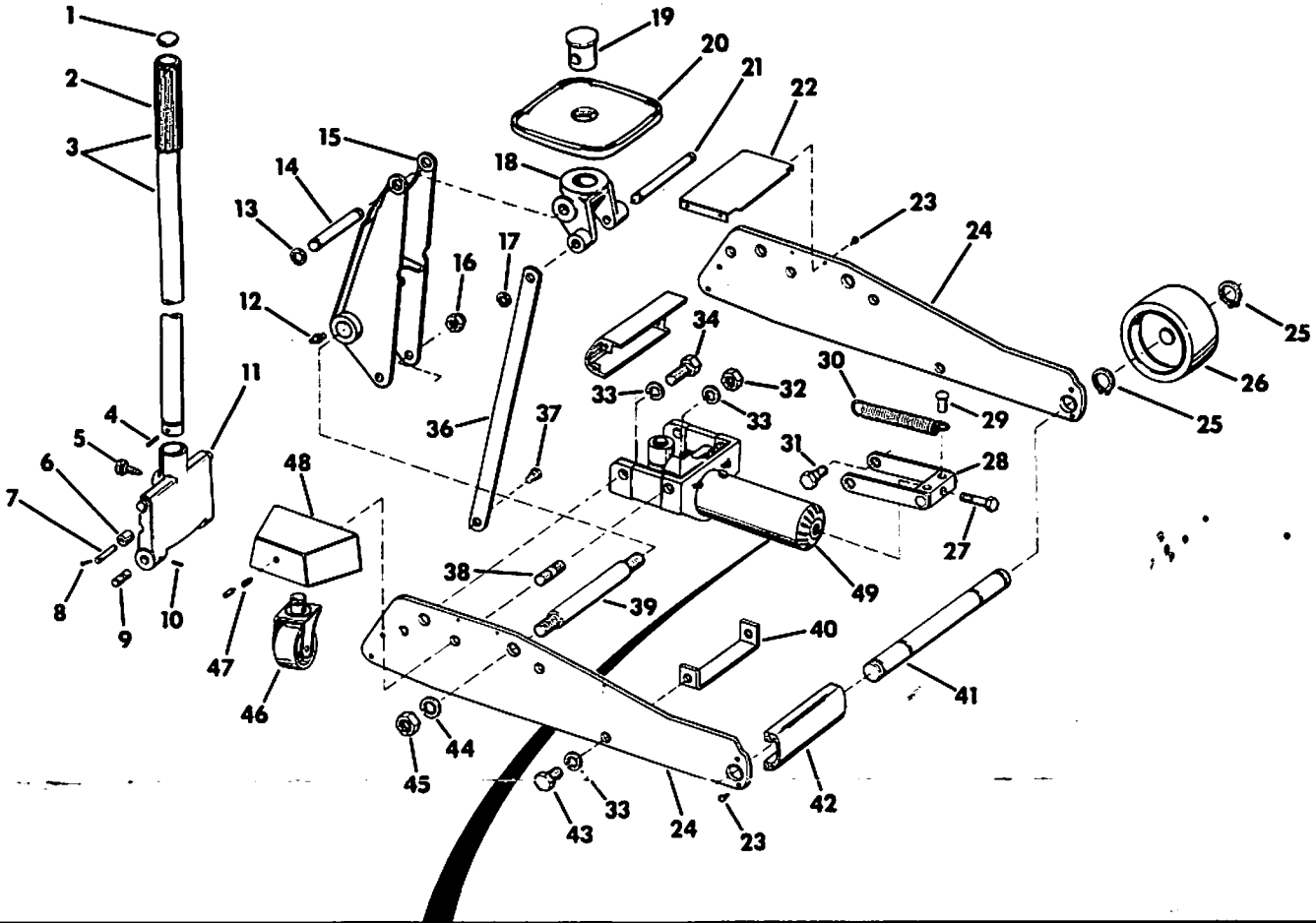
MODEL NO.
727.12100

CAUTION
Read Rules for
Safe Operation
Carefully

- Repair Parts
- Operating Instructions



SEARS 1-1/2 TON SERVICE JACK MODEL NO. 727.12100



SEARS 1-1/2 TON SERVICE JACK MODEL NO. 727.12100

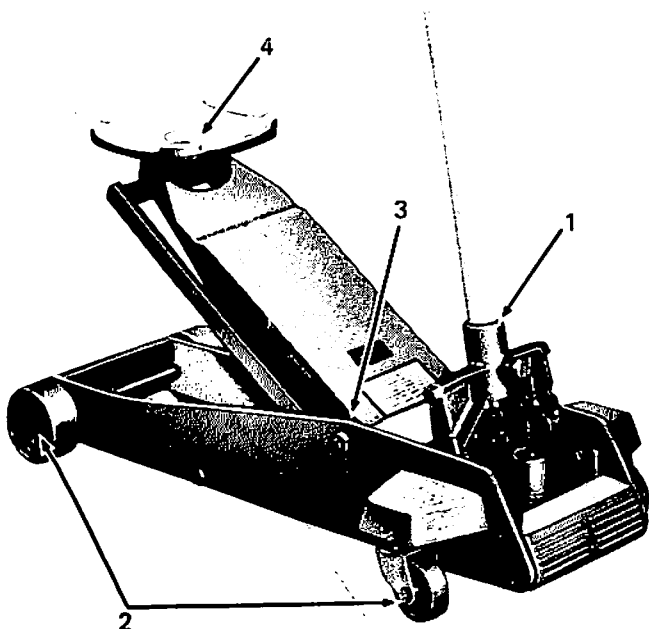
Key No.	Part No.	Description	Key No.	Part No.	Description	Key No.	Part No.	Description
1	K369.006	Button	33	K244.108	Washer	65	1.16	Ball 7/32"
2	A794.550	Grip	34	A674.247	Bolt	66	S1.16	Ball 5/16"
3	SJ2.135A	Handle w/grip	35	A784.098	Cover	67	BA85.183	Spring
4	A676.061	Pin	36	A657.116	Bar	68	B159.167	Gasket
5	A423.138	Lock	37	A686.064	Bolt	69	CB9.185	Plug
6	A679.232	Roller	38	A683.305	Stud	70	A651.006	Plug
7	A680.153	Pin	39	A670.121	Shaft	71	8956.028	Valve (overload)
8	S1.58	Cotter Pin	40	E150.111	Bracket	72	B162.206	Spring
9	A678.121	Pin	41	A981.104	Axle	73	K1.013	Guide
10	R28.61	Pin	42	A783.098	Cover	74	A655.005	Base
11	A677.133	Yoke	43	A866.247	Bolt	75	CB9.30-2	Cylinder
12	S4.188-2	Fitting	44	S1.119	Washer	76	C9.22-2	Plug (filler)
13	W407.524	Ring	45	S1.120	Bolt	77	C9.37	Gasket
14	A665.112	Pin	46	A673.154	Caster	78	K910.025	Reservoir
15	A682.103	Arm	47	A672.173	Screw	79	K528.020	Cap
16	J569.055	Nut	48	A671.189	Bracket	80	D792.041	"O" Ring
17	A664.523	Ring	49	K680.900	Power Unit	81	K248.900	Plunger w/ring
18	A662.111	Bracket	50	A650.340	Cap	82	D368.044	Retainer
19	A946.153	Pin	51	A649.170	Spring	83	D366.145	Bar
20	A943.045	Saddle	52	A648.054	Nut	84	D367.107	Rod
21	A663.114	Pin	53	A652.051-1	Piston	85	S4.141	Spring
22	A793.098	Cover	54	P298.504	"O" Ring	86	D369.006	Plug
23	A751.087	Screw	55	A646.317	Wiper	87	E494.108	Wiper
24	A656.101	Plate	56	A645.053	Cup	88	D385.041	Cup
25	A434.523	Ring	57	K263.108	Washer	89	J349.108-1	Washer
26	A977.106	Wheel	58	CB9.55	Nut	†	N78.026	Decal (repair)
27	A797.242	Bolt	59	A643.050	Cylinder	†	AJ100.504	Decal (caution)
28	A685.900	Link	60	SJ1.50A	Pump	†	PS-468	Instruction & Parts Manual
29	A668.063	Rivet	61	SJ1.10A	Valve			
30	A669.184	Spring	62	CB9.11	Nut			
31	A681.242	Bolt	63	CB9.335	Wiper			
32	AA85.120	Nut	64	1.74	Packing			

† Not Shown

RULES FOR SAFE OPERATION

CAUTION: This jack is designed for lifting purposes only. After jacking, always use safety stands to support load before making repairs. Do not overload this jack beyond its rated capacity.

FOR YOUR SAFETY



TO RAISE AND LOWER LOADS

- Before using, open release valve by turning handle counter clockwise. Hold open. Pump rapidly about 4 full strokes. Close release valve by turning handle clockwise. Raise lifting arm to full height without load. Open release valve and allow lift arm to collapse. Jack is now ready for proper operation.
- Speed of lowering is controlled by handle rotation. To raise the load turn handle clockwise. To lower the load turn handle counter clockwise.

TO LUBRICATE

Lubricate frequently at points shown in the illustration.

- Grease handle and yoke to permit free handle rotation.
- Lubricate wheel axles and caster bearings with light oil.
- Grease lift arm at two grease fittings.
- Lubricate saddle pin and lift arm moving parts with light oil.

TO ADD OIL

- With lift arm in collapsed position remove cover plate.
- Remove filler plug Key No. 76. Add hydraulic jack oil until oil just covers internal cylinder seen through the filler hole. Do not overfill. Excessive oil will cause faulty lifting due to lack of air space.
- Check oil frequently. If dirty, replace with hydraulic jack oil. Never use brake fluid. It ruins the seals.

Sears

owners manual

MODEL NO. 727.12100

The Model and Serial Numbers are shown on the decal mounted on the lifting arm. Always include both these numbers when requesting service or repair parts.

SEARS SERVICE IS AT YOUR SERVICE WHEREVER YOU LIVE OR MOVE IN THE U.S.A.

Your Sears merchandise takes on added value when you discover that Sears has over 2,000 service units throughout the country. Each is staffed by Sears trained, professional technicians using Sears approved parts and methods.

HOW TO ORDER REPAIR PARTS

All parts listed herein may be ordered through SEARS, ROEBUCK AND CO. When ordering parts by mail, selling prices will be furnished on request or parts will be shipped at prevailing prices and you will be billed accordingly.

WHEN ORDERING REPAIR PARTS, ALWAYS GIVE THE FOLLOWING INFORMATION AS SHOWN IN THIS LIST:

- | | |
|----------------------------------|--------------------------------------|
| 1. The PART NUMBER | 3. The PART DESCRIPTION |
| 2. The MODEL NUMBER
727.12100 | 4. The NAME of ITEM—
Service Jack |