

## Operating Instructions & Parts Manual

# Safeguard® Transmission Jack



65101 model is equipped with air motor (not shown in photo)

Model	Capacity	Min. Height	Max Height	Stroke (Stage 1)	Stroke (Stage 2)	Shipping Weight
65100	½ Ton	37"	75-15/16"	19-7/8"	19-1/4"	169.8 Lbs
65101	½ Ton	37"	75-15/16"	19-7/8"	19-1/4"	176.4 Lbs
65200	1 Ton	37"	75-15/16"	19-7/8"	19-1/4"	178.2 Lbs

### Contents:

- Page: 1. Specifications
2. Safety & Warning Information
3. & 4. Setup, Operation & Preventive Maintenance
5. Inspection, Storage & Troubleshooting
6. Exploded View & Replaceable Part Numbers
7. Warranty Information
8. Preventive Maintenance Record Log

## **SAFETY & WARNING INFORMATION**



This is the safety notification symbol. This symbol will notify you of any potential injury hazards. Please follow all instructions that follow this symbol to avoid possible injuries or death.

### **⚠ WARNING**

Indicates a hazardous situation. If proper steps are not followed, death or serious injury could result.



### **IMPORTANT: READ ALL INSTRUCTIONS BEFORE USE**

Before operating this device, be sure to read all content within this manual, ensuring that you understand the operating procedures, maintenance requirements and all safety warnings.

The owner and/or operator shall have an understanding of the product, its operating characteristics, and safety operating instructions before operating this device. Safety information shall be emphasized and understood. If the operator is not fluent in English, the product and safety instructions shall be read to and discussed with the operator in the operator's native language by the purchaser/owner or his designee, making sure that the operator comprehends their contents.

### **⚠ WARNING**

#### **Actions to help prevent dangerous situations**

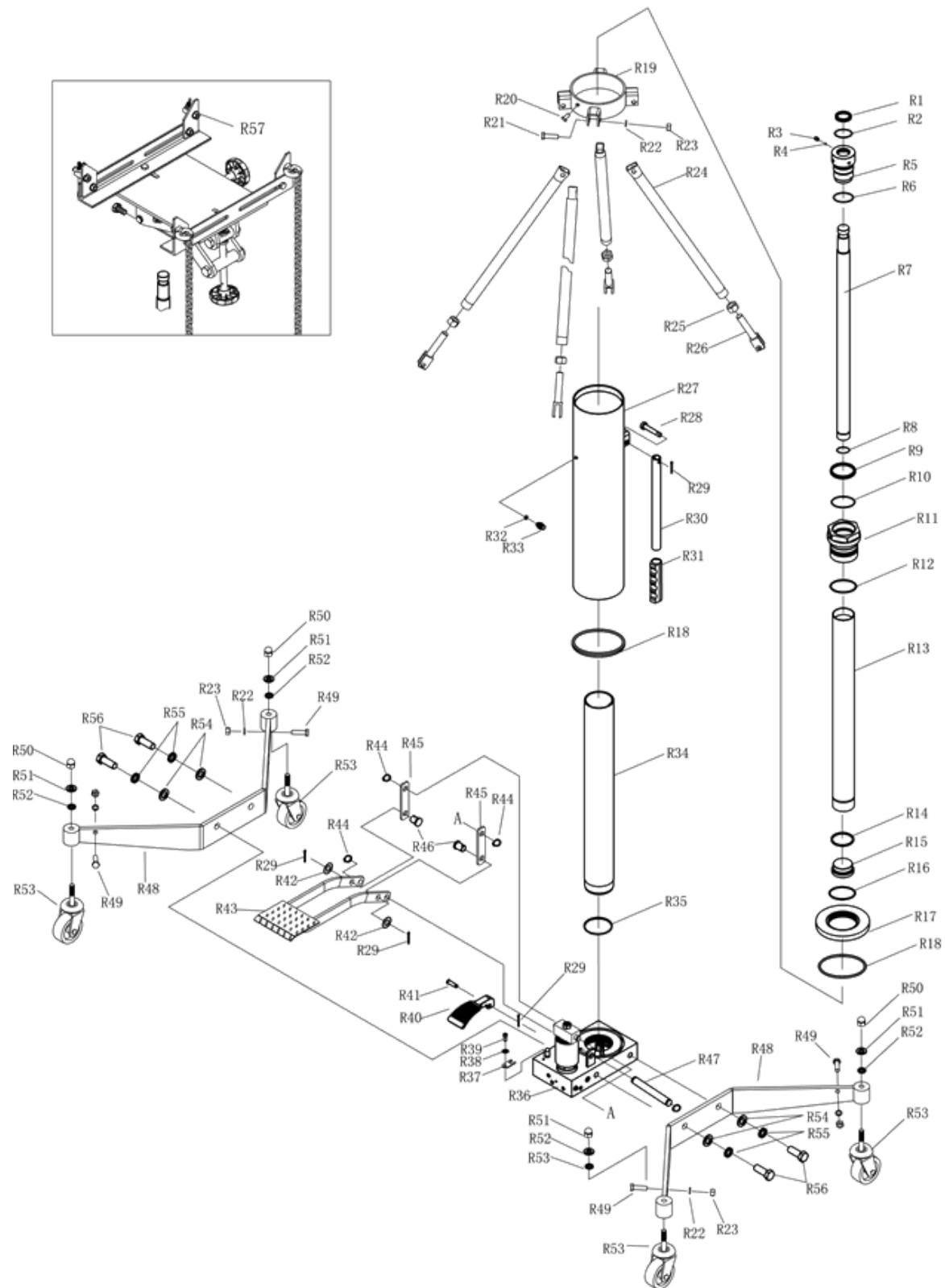
- Study, understand, and follow all instructions before operating this device.
- Do not exceed the rated capacity stated.
- Use only on hard level surfaces.
- Adequately support the vehicle before starting repairs.
- Use of this product is limited to the removal, installation and transportation in the lowered position, of transmissions, transfer cases and transaxles.
- Only attachments and/or adapters supplied by the manufacturer shall be used.
- No alterations shall be made to this product.
- Failure to heed these markings may result in serious personal injury and/or property damage.

**SETUP, OPERATION & PREVENTIVE MAINTENANCE****Setup**

- Prior to each use, visual inspection (See Pg. 6) shall be made to the device by checking for abnormal conditions, such as cracked welds, leaks, and damaged, loose, or missing parts.
- Consult the vehicle owner's manual to determine the correct removal procedures of the item being removed.
- Be sure to set the vehicle in park with the emergency brake on and wheels securely chocked.
- Be sure that the vehicle is supported by appropriate means and the transmission jack is on a hard, level surface.

**Assembly**

- Take out all the parts from the wooden box.
- Lay the pump on the floor; connect 2pcs of base (r48) to the pump by using flat washer (r54), lock washer (r55) and bolt (r56). Then tighten all of them.
- Connect 4pcs of casters (r53) with base (r48) by using flat washer (r52), lock washer (r51) and nut (r50).
- Connect one end of the supporting bars (r24 r25 r26) to the base (r48) by using bolt (r49), nut (r22) and lock washer (r23).
- Adjust the supporting bars (r24 r25 r26) to the length you want, align the holes with the support ring (r19), insert bolt (8) to the hole and lock it by nut (r22) and lock washer (r23).
- After the 4 supporting bars are all assembled, then tighten all the bolts and nuts.
- Attached the adaptor to the piston of the pump and lock it by bolt (8).
- Align the holes on claw base (25) with the holes on adaptor and connect then with bolt (27), flat washer (18), lock washer (r22) and nut (r23).
- Connect claws with claw base as showed in the exploded drawings by using bolt (8), flat washer (18) and nut (r23).
- Insert 2pcs of screw (24) to the holes in the claws as showed in the exploded drawing and lock them by flat washer (18) and nut (r23).
- Open the 2 connectors (23) and connect it with chain (22) and attach them to screw (24), tighten the 2 connectors (23).
- Insert the 2 chain bases (29) to holes on the left 2 claw base (26) and lock them by flat washer (18) and nut (r23).
- Insert 2 hooks (28) into the holes of chain base (29), then attached wing nut (30) to the hook (28).





### **Lifting**

- Roll the transmission jack into position and pump the foot pedal (R43) until the saddle reaches desired height.

NOTE: Follow vehicle manufacturer's recommended procedures for removing the load as outlined in vehicle service manual or repair guide.

- Carefully center load on the saddle. Ensure the load's center of gravity is centered on the saddle and the setup is stable and secure.

NOTE: Before lowering load, check to ensure all tools and personnel are clear and it is safe to lower the load.

- SLOWLY and CAREFULLY operate the release pedal R40 to lower the load to its lowest possible position.
- If necessary, CAREFULLY and SLOWLY move the jack.
- Transfer load immediately to appropriate support device for service or repair.



### **Maintenance**

**NOTICE:** Use high grade hydraulic oil only. Never use brake fluid, motor oil, transmission fluid, turbine oil or any other fluids. ISO-VG22 or equivalent hydraulic oil is recommended.

#### **Check and Refill Oil**

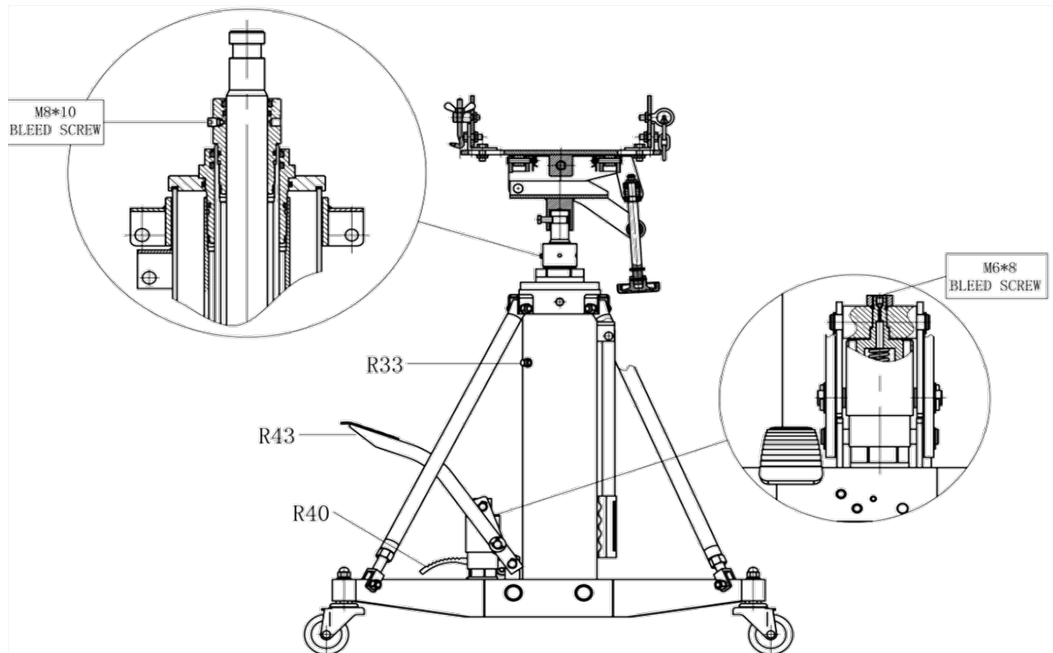
- With the jack in the fully lowered position, remove oil filler plug.
- Proper oil level should be just covering inner cylinder as seen from the oil filler plug hole.
- Do not overfill. Always fill with new, clean hydraulic jack oil as recommended above.
- Reinstall oil filler plug.

#### **Lubrication and Cleaning**

- Periodically clean and lubricate all moving parts and pivot points.

#### **Air Venting Procedures**

- Loosen Screw R33.
- Press the Release Pedal R40 when the 2 piston (1st stage and 2nd stage) are in the lowest position.
- Use a 3mm Wrench to loosen M6\*8 bleed screw but DO NOT take it off.
- Operate the Pedal R43 two or three times until there is hydraulic oil (without bubble) overflow from the hole of bleed screw.
- At the same time, use a 3mm Wrench to tighten M6\*8 bleed screw.
- Release Pedal R40 and operate Pedal 42 to check. Repeat the above steps if the product still doesn't work.



## Damaged Equipment

Any jack that appears to be damaged in any way, is found to be worn, or operates abnormally **SHALL BE REMOVED FROM SERVICE UNTIL REPAIRED**. It is recommended that necessary repairs be made by a manufacturer's or supplier's authorized repair facility if repairs are permitted by the manufacturer or supplier.

## Alterations

Because of potential hazards associated with this type of equipment, no alterations shall be made to the product.

## Attachments and Adapters

Only attachments and/or adapters supplied by the manufacturer shall be used.

## Inspection

- Visual inspection shall be made before each use of the device by checking for abnormal conditions, such as cracked welds, leaks, and damaged, loose, or missing parts.
- Other inspections shall be made per product operating instructions.
- This device shall be inspected immediately if the device is believed to have been subjected to an abnormal load or shock. It is recommended that this inspection be made by a manufacturer's or supplier's authorized repair facility.
- Owners and/or operators should be aware that repair of this equipment may require specialized knowledge and facilities. It is recommended that an annual inspection of the product be made by a manufacturer's or supplier's authorized repair facility and that any defective parts, decals, or safety labels or signs be replaced with manufacturer's or supplier's specified parts.

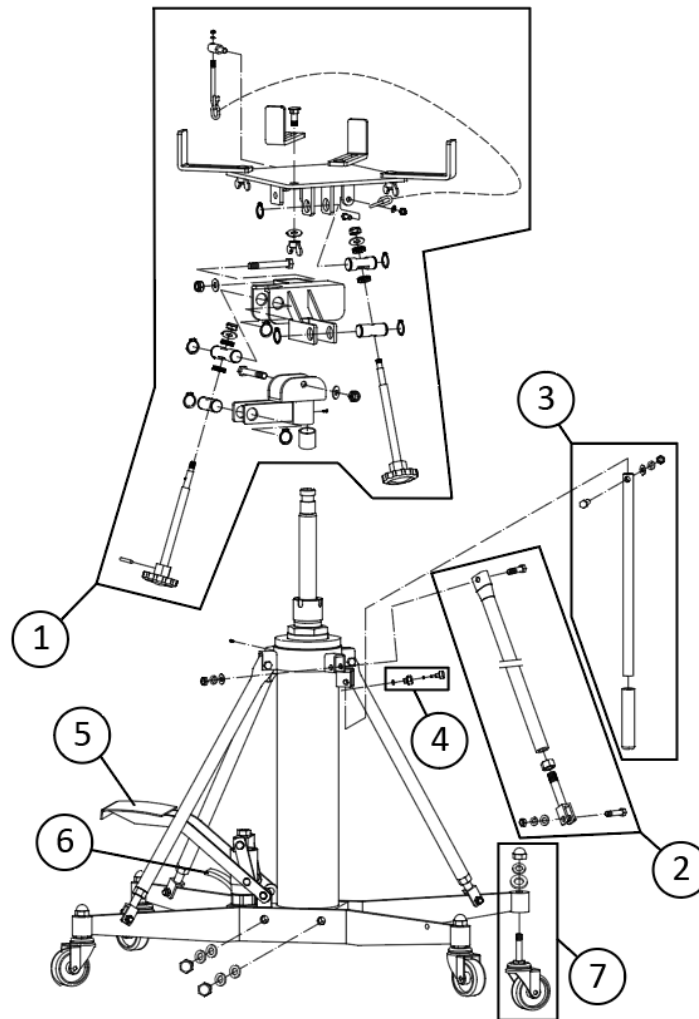
## Storage

This Jack should be stored in a dry location on a level surface.



## Troubleshooting

Symptom	Possible Causes	Solution
Unit fails to lift	<ol style="list-style-type: none"> <li>Not enough oil</li> <li>Air in the hydraulic system</li> <li>Inner leaking</li> </ol>	<ol style="list-style-type: none"> <li>Refer to maintenance section and fill to correct fluid level</li> <li>Refer to Page. 5, 6 to eliminate the air</li> <li>Contact with the supplier for repair</li> </ol>
Unit lifts slowly	<ol style="list-style-type: none"> <li>Air in the hydraulic system</li> <li>Inner leaking</li> </ol>	<ol style="list-style-type: none"> <li>Refer to Page. 5, 6 to eliminate the air</li> <li>Contact with the supplier for repair</li> </ol>
Lift or Descent not smoothly	<ol style="list-style-type: none"> <li>The piston rod needs lubricating</li> <li>Air in the ram</li> </ol>	<ol style="list-style-type: none"> <li>Add lubricate oil on the piston rod and work the piston by one cycle</li> <li>Refer to Page. 5, 6 to eliminate the air</li> </ol>
When offloading, the first stage piston can be lifted but the second can't be lifted	<ol style="list-style-type: none"> <li>Not enough oil</li> <li>Air in the ram</li> </ol>	<ol style="list-style-type: none"> <li>Refer to maintenance section and fill to correct fluid level</li> <li>Refer to Page. 5, 6 to eliminate the air</li> </ol>
When under loading, the first stage piston can be lifted but the second can't be lifted	<ol style="list-style-type: none"> <li>Not enough oil</li> <li>Air in the ram</li> <li>Over the max. load</li> <li>Wrong adjustment of the safety valve</li> </ol>	<ol style="list-style-type: none"> <li>Refer to maintenance section and fill to correct fluid level</li> <li>Refer to Page. 5, 6 to eliminate the air</li> <li>Check the weight of the load</li> <li>Contact with the supplier for repair</li> </ol>
When under loading, the first stage piston can be lifted but the second can't be lifted	<ol style="list-style-type: none"> <li>Not enough oil</li> <li>Air in the ram</li> <li>Over the max. load</li> <li>Wrong adjustment of the safety valve</li> </ol>	<ol style="list-style-type: none"> <li>Refer to maintenance section and fill to correct fluid level</li> <li>Refer to page.6 to eliminate the air</li> <li>Check the weight of the load</li> <li>Contact with the supplier for repair</li> </ol>
Unit fails to keep pressure	<ol style="list-style-type: none"> <li>The release pedal doesn't work well</li> <li>Inner leaking</li> </ol>	<ol style="list-style-type: none"> <li>Check the release pedal for any abnormal</li> <li>Contact with the supplier for repair</li> </ol>

**EXPLODED VIEW AND PART NUMBERS**


Item	Part #	Description	QTY
1	65100-1	Saddle Assembly	1
2	65200-2	Brace Assembly	4
3	65100-3	Handle Assembly	1
4	65100-4	Vent Valve Assembly	1
5	65100-5	Foot Pedal Assembly-Pump	1
6	65100-6	Release Pedal Assembly	1
7	65100-7	Caster Assembly	4
8	65101-8	Air Motor Assembly for 65101	1
9	65100-9	Repair Kit	1





**Model No 65100/65101/65200**

## **WARRANTY INFORMATION**

### **ONE YEAR LIMITED WARRANTY**

For a period of one (1) year from your purchase date, THA Hydraulics (THA) will repair or replace (at its option) without charge, your THA product if it was purchased new and the product has failed due to a defect in material or workmanship which you experienced during normal use of the product. This limited warranty is your exclusive remedy.

To access the benefits of this warranty, contact THA at 1-844-364-9922 for confirmation that this warranty applies. Thereafter, you may be advised to return the product under warranty, freight prepaid, to the THA Hydraulics service department.

If this THA product is altered, abused, misused, modified, or undergoes service by an unauthorized technician, your warranty will be void. We are not responsible for damage to ornamental designs you place on this THA product and such ornamentation should not cover any warnings or instructions or they may void the warranty. This warranty does not cover scratches, superficial dents, and other abrasions to the paint finish that occur under normal use.

Subject to the law in your state:

- (1) Your sole and exclusive remedy is repair or replacement of the defective product as described above.
- (2) THA is not liable for any incidental damages, including but not limited to, lost profits and unforeseeable consequences.
- (3) The repair and replacement of this product under the express limited warranty described above is your exclusive remedy and is provided in lieu of all other warranties, express or implied. All other warranties, including implied warranties and warranties of merchantability or fitness for a particular purpose are disclaimed and, if disclaimer is prohibited, these warranties are limited to one year from your date of purchase of this product.

Some states' laws do not allow limited durations on certain implied warranties and some states' laws do not allow limitations on incidental or consequential damages. You should consult the law in your state to determine how your rights may vary.

THA Hydraulics  
8406 NW 107<sup>th</sup> Terrace, Kansas City, MO 64153  
Service Number 1-844-364-9922



**Model No 65100/65101/65200**

Printed In China

**PREVENTIVE MAINTENANCE RECORD LOG**

Date	Maintenance Performed



**Model No 65100/65101/65200**

**PREVENTIVE MAINTENANCE RECORD LOG**

Date	Maintenance Performed