



QFJ44A 22 TON CAPACITY AIR OPERATED HYDRAULIC JACK

Address: 200 Cabel St. Louisville, KY 40206.

Sales and Service: 1-877-771-5438.

Fax: 502-583-5488.

Website: www.qualitylifts.com

SPECIFICATIONS

Capacity	22 Tons
Min. Saddle Height	9"
Max. Saddle Height	17"
Stroke	4.53"
Handle Length	42.68"
Wheel Diameter	8"
Dimensions	22.31"L x 12.8"W x 50.55"H
Working Air Pressure	100-140 psi

FEATURES

- Chrome Plated Lift Ram
- Self-Retracting Ram Springs for Fast Ram Retraction
- Push Valve Lever for Fast Air Control
- 3 Position Lock Lever
- Safety Overload Valve
- Large Diameter Wheels for Ease of Operation

UNPACKING

After unpacking and before assembly, check the parts list and parts diagram on pages 2 and 3 to make sure all parts are included. If any parts are missing or broken, please call the phone number listed above.



! WARNING

USE ONLY ON HARD LEVEL SURFACES.

DO NOT GET UNDER A VEHICLE THAT IS ONLY SUPPORTED BY A TROLLEY/SERVICE JACK—USE VEHICLE SUPPORT STANDS.

THIS IS A LIFTING DEVICE ONLY. DO NOT MOVE OR DOLLY THE VEHICLE WHILE ON THE JACK. IMMEDIATELY AFTER LIFTING, SUPPORT THE VEHICLE WITH APPROPRIATE MEANS.

DO NOT OVERLOAD. OVERLOADING CAN CAUSE DAMAGE TO OR FAILURE OF THE JACK.

LIFT ONLY ON AREAS OF THE VEHICLE AS SPECIFIED BY THE VEHICLE MANUFACTURER.

CENTER LOAD ON SADDLE PRIOR TO LIFTING.

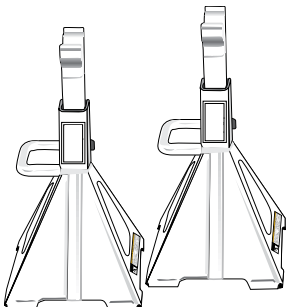
NO ALTERATIONS TO THE JACK SHALL BE MADE.

READ, STUDY AND UNDERSTAND THE OPERATING MANUAL PACKED WITH THIS JACK BEFORE OPERATING.

FAILURE TO HEED THESE WARNINGS MAY RESULT IN LOSS OF LOAD, DAMAGE TO JACK, AND/OR FAILURE RESULTING IN PROPERTY DAMAGE, PERSONAL OR FATAL INJURY.

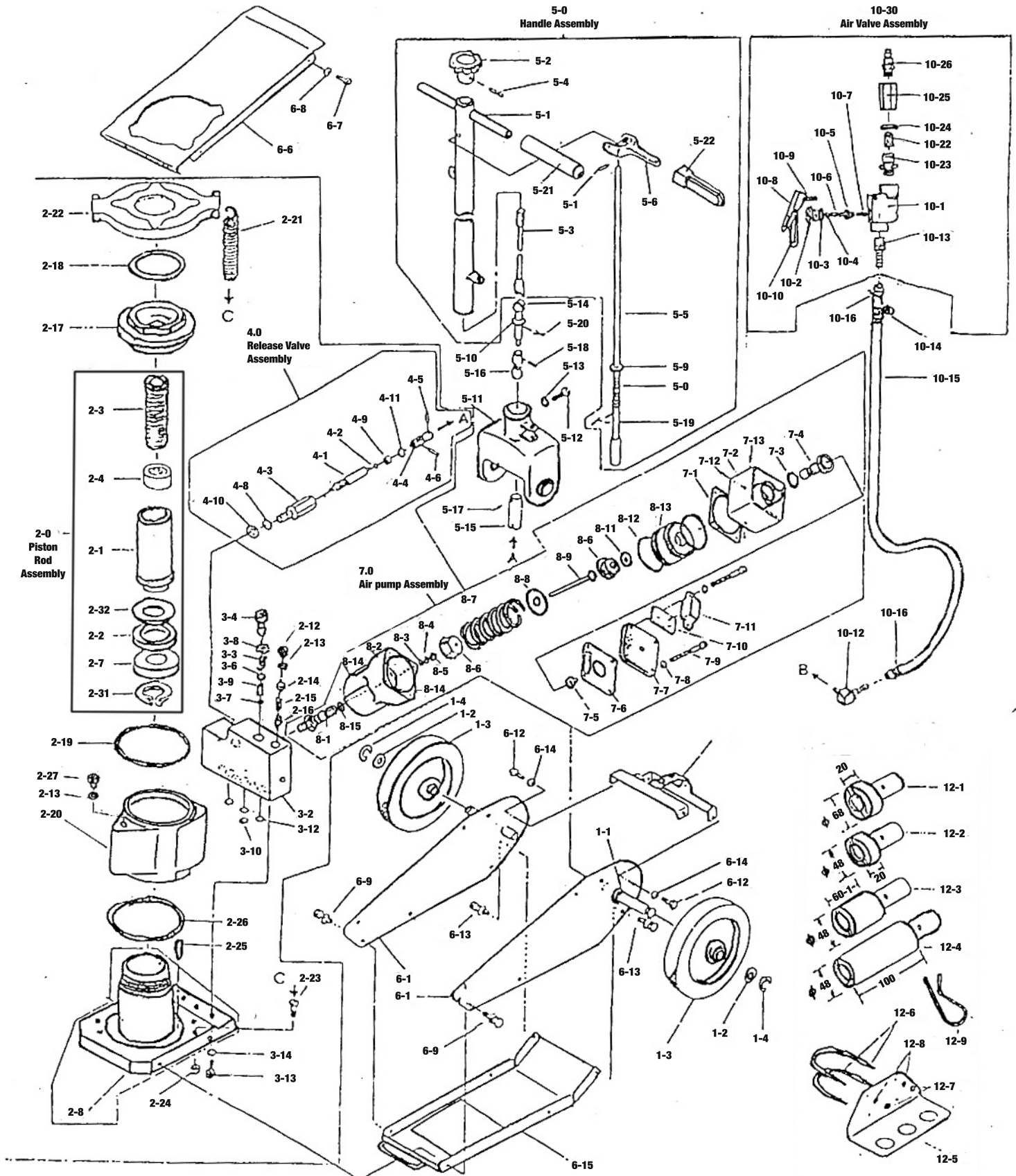
! WARNING

For Your Safety and to Prevent Injury:
ALWAYS Support Vehicle with Appropriately Rated Support Stands!



Use Service Jack for Lifting Purposes ONLY!

QFJ44A 22 TON CAPACITY AIR OPERATED HYDRAULIC JACK



Item No.	Part No.	Description	Qty.
1-1		Wheel Shaft	1
1-2	RS662212	Washer	2
1-3	RS662213	Wheel	2
1-4	RS662214	Snap Ring	2
2-0		Piston Rod Assembly	1
2-1		Piston Rod	1
*2-2		Packing	1
2-3		Screw	1
2-4		Bush	1
2-7		Packing Retainer	1
2-8	RS662228	Cylinder	1
2-12		Bolt	2
*2-13		Packing	2
*2-14		Spring Retainer	1
*2-15		Spring	1
2-16		Safety Valve	1
2-17		Nut	1
*2-18		Oil Seal	1
*2-19		"O" Ring 122 x 5.3	1
2-20		Oil Tank	1
2-21	RS6622221	Spring	4
2-22	RS6622222BL5	Spring Hanger	1
2-23		Machine Screw	4
2-24		Nut	4
*2-25		Oil Strainer	1
*2-26		"O" Ring 122 x 5.3	1
2-27	RS6622227BL5	Breathing-Screw	1
2-31		Snap Ring	1
*2-32		Back-up Ring	1
3-2		Oil Box	1
3-4		Bolt	1
*3-5		Spring	1
*3-6		Steel Ball 9.5	1
*3-7		Steel Ball 6.35	1
*3-8		Copper Packing	1
*3-9		Separator	1
*3-10		Back-up Ring	1
*3-12		"O" Ring 11 x 1.9	3
3-13		Bolt	3
*3-14		Spring Washer	3
4-0	RS662240BL5	Release Valve Assembly	1
4-1		Valve	1
*4-2		"O" Ring 14 x 2.4	1
4-3		Guide	1
4-4		Universal Joint	1
4-5		Spring Pin	1
4-6		Spring Pin	1
*4-8		"O" Ring 15.6 x 2.65	1
*4-9		Washer	1
*4-10		Packing	1
4-11		Snap Ring	1
5-0	RS662250A	Handle Assembly	1
5-1		Handle	1
5-2	RS662252	Knob	1
5-3		Connecting Rod	1
5-4		Spring Pin	1
5-5	RS662255	Stopper (incl. 5-5, 5-8, 5-9, 5-19)	1
5-6		Lock Lever	1
5-7		Spring Pin	1
5-8		Spring	1
5-9		Washer	1
5-10		Washer	1
5-11	RS6622511BL5	Handle Fork	1
5-12	RS6622512	Bolt	1
5-13		Spring Washer	1
5-14		Connecting Rod	1
5-15		Connecting Rod	1
5-16	RS6622516BL5	Universal Joint (incl. 5-14, to 5-18,5-20)	1
5-17		Spring Pin	1
5-18		Spring Pin	1
5-19		Spring Pin	1

Item No.	Part No.	Description	Qty.
5-20		Cotter Pin	1
5-21		Handle Cap	2
5-22		Handle Cap	1
6-3		Frame	1
6-1		Handle Fork Bracket	1
6-6	RS662266BL5	Upper Cover	1
6-7		Machine Screw	4
6-8		Lock Washer	4
6-9		Bolt	4
6-12		Bolt	4
6-13		Bolt	4
6-14		Spring Washer	4
6-15		Lower Cover	1
*7-1		Packing Washer	1
7-2		Muffler Cover	1
*7-3		"O" Ring 23.6 x 3.55	1
7-4		Valve Rod	1
*7-5		Rubber Pad	1
*7-6		Packing Washer	1
7-7		Cover	1
7-8		Spring Washer	1
7-9		Hex-Socket Screw M8 x 70	4
*7-10		Filter Element	1
7-11		Filter Cover	1
*7-12		3 Steel Ball	1
*7-13		M6 Machine Screw	2
8-1	RS662281BL5	Plunger Cover	1
8-2		Air Pump Body	1
*8-3		NL Retainer	1
*8-4		"O" Ring 5.3 x 3.55	1
*8-5		Packing Guide	1
8-6		Nut	1
8-7		Spring	1
8-8		Washer	1
8-9		Plunger	1
8-10		Retainer	1
*8-11		"O" Ring 23.6 x 3.55	1
*8-12		"O" Ring 56 x 5.7	2
8-13		Piston	1
*8-14		3 Steel Ball	2
8-15		Washer	1
10-30	RS66221030	Air Valve Assembly	1
10-1		Valve Body	1
10-2		Nut	1
10-3		"O" Ring 18 x 2.4	1
10-4		"O" Ring 3 x 1.6	1
10-5		Packing	1
10-6		Throttle	1
10-7		Spring	1
10-8		Lever	1
10-9		Lever Pin	1
10-10		Lock Lever	1
10-12		Pump Elbow	1
10-13		Hose Connector	1
10-14		Spring	1
10-15	RS66221015	Air Hose	1
10-16		Hose Band	2
10-22		Air Filter	1
10-23		Connector	1
10-24		"O" Ring 18 x 2.4	1
10-25		Connecting Nut	1
10-26		Connector	1
12-1	RS6622121	Adaptor-A	1
12-2	RS6622122	Adaptor-B	1
12-3	RS6622123	Adaptor-C	1
12-4	RS6622124	Adaptor-D	1
12-5	RS6622125BL5	Holder Adaptor	1
12-6		U-Bolt	2
12-7		Nut	4
12-8		Spring Washer	4
12-9	RS6622129	Hitch Pin	4

Note: only items identified by part number are available individually.

* Asterisked items are available in the seal kit, RS6622SK.

ASSEMBLING THE 22 TON AIR HYDRAULIC JACK

The Adapter Holder needs to be attached to the handle as shown in Figure 1. Use 2 U-bolts, 2 nuts and 2 spring washers to complete this assembly.

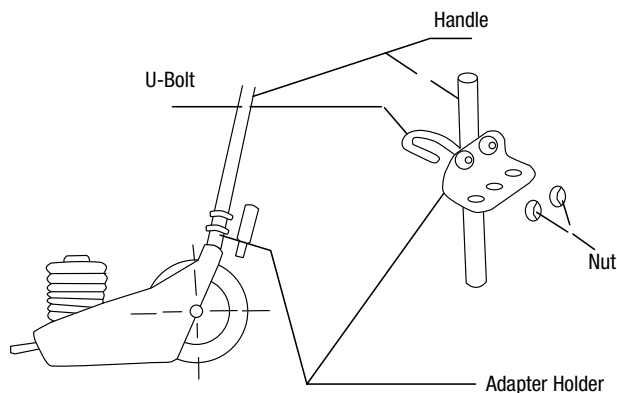


Figure #1

ASSEMBLING THE 22 TON AIR HYDRAULIC JACK

The jack easily connects to an air compressor. Figure 2 shows proper jack/air compressor connection. The air hose connecting the air compressor with the jack should be as short as possible. Installation of an air filter and oiler on the compressor end is recommended. Use of a 3 horsepower or larger compressor is recommended.

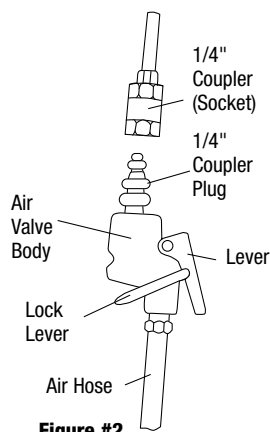


Figure #2

OWNER/USER RESPONSIBILITY

The owner and/or user must have a thorough understanding of the manufacturer's operating instructions and warnings before using this service jack. Personnel involved in the use and operation of equipment shall be careful, competent, trained, and qualified in the safe operation of the equipment and its proper use when servicing motor vehicles and their components. Warning information should be emphasized and understood. If the operator is not fluent in English, the manufacturer's instructions and warnings shall be read to and discussed with the operator in the operator's native language by the purchaser/owner, making sure that the operator comprehends its contents. Owner and/or user must study and maintain for future reference the manufacturer's instructions. Owner and/or user is responsible for keeping all warning labels and instruction manuals legible and intact. Replacement labels and literature are available from the manufacturer.

INSPECTION

Visual inspection should be made before each use of the service jack, checking for leaking hydraulic fluid and damaged, loose or missing parts. Each jack must be inspected by a manufacturer's repair facility immediately, if accidentally subjected to an abnormal load or shock. Any jack which appears to be damaged in any way, found to be badly worn, or operates abnormally **MUST BE REMOVED FROM SERVICE** until necessary repairs are made by a manufacturer's authorized repair facility. It is recommended that an annual inspection of the jack be made by a manufacturer's authorized repair facility and that any defective parts, decals or warning labels be replaced with manufacturer's specified parts.

A list of authorized repair facilities is on a separate page insert.

TROUBLESHOOTING

PROBLEM	SOLUTION
Jack will not lift load.	The release valve is not closed. Turn the valve clockwise tightly.
Jack will not lift load. Jack will not lift to its full height	Low on hydraulic fluid. Refill the jack to the correct level of hydraulic fluid.
Jack will not lift load.	Pump seals and back-up ring are defective. Clean hydraulic fluid passages, replace seals and renew hydraulic fluid. (Must be serviced by qualified service center).
Jack will not lift to its full height. Jack will not lift smoothly or jack feels spongy.	The hydraulic system is filled with air. Open the release valve, pump handle rapidly (4) full strokes to purge air, close release valve.
Jack will not lower completely.	Return spring is broken or linkages binding. Replace spring if broken. Grease pivot shaft, oil all lift arm linkages.
Jack will not hold load or handle rises.	Discharge ball is not sealing hydraulic system and oil may be dirty. Manually flush hydraulic system by raising and lowering lift arm by hand. Open the release valve, as required to raise and lower the lift arm. Manually raise and lower lift arm.

OPERATING INSTRUCTIONS

IMPORTANT: Before attempting to raise a vehicle, check vehicle service manual for recommended lifting surfaces.

1. **To raise load:** Close release valve tightly (by turning handle knob clockwise). DO NOT OVERTIGHTEN. Position jack under load so that saddle will contact load firmly and load is centered so it cannot slip. Operate the air valve until saddle approaches the load. Once again check to see that saddle is correctly positioned. Raise load to desired height. Place jack stands of appropriate capacity under the vehicle. DO NOT CRAWL UNDER VEHICLE WHILE LIFTING VEHICLE OR PLACING OR REMOVING JACK STANDS! Place jack stands at vehicle manufacturer's recommended lift areas that provide stable support for the raised vehicle.
2. **To lower load:** Open release valve VERY SLOWLY (by turning handle knob counterclockwise). When release valve is opened, saddle and load will be lowered. Lower the vehicle slowly so as not to shock load the jack stands. Once repairs are completed, raise vehicle enough to remove jack stands. Lower vehicle very slowly.

MAINTENANCE INSTRUCTIONS

NOTE: The Jack's safety valve has been calibrated by the manufacturer. Never attempt to disassemble the safety valve.

IMPORTANT! Use only a good grade hydraulic jack oil. Avoid mixing types of oil. Do not use brake fluid, alcohol, glycerin, detergent motor oil, or dirty oil. Improper fluid can cause serious internal damage to the jack, rendering it inoperative.

To Add Oil: With saddle fully lowered and ram depressed, set jack in an upright position and remove breather screw (#2-27). Fill until oil is approximately 1 inch below breathing screw (#2-27) hole.

To Change Oil: For best performance and longest life, replace the entire oil supply at least once a year. To drain the oil, remove the breathing screw (#2-27). Lay the jack on its side and allow the oil to run out into suitable drain pan. The oil will run slowly because air must enter as oil drains out. Be careful to prevent dirt or foreign matter from entering the system. Replace with good grade hydraulic jack oil.

LIMITED WARRANTY:

QUALITY LIFTS WARRANTS TO ITS CUSTOMERS THAT THE COMPANY'S HYDRAULIC JACKS ARE FREE FROM DEFECTS IN WORKMANSHIP AND MATERIALS.

Quality Lifts will repair or replace its hydraulic jacks which fail to give satisfactory service due to defective workmanship or materials, based upon the terms and conditions of the following described warranty plans attributed to that specific product.

This product carries a ONE-YEAR limited warranty. During this warranty period, Quality Lifts will repair or replace at our option any part or unit which proves to be defective in material or workmanship.

This warranty does not cover damage and normal wear and tear to consumable parts. This warranty does not cover any repairs or replacement made by anyone other than Quality Lifts or its authorized hydraulic service centers.

The foregoing obligation is Quality Lifts sole liability under this or any implied warranty and under no circumstances shall we be liable for any incidental or consequential damages.

Note: Some states do not allow the exclusion or limitation of incidental or consequential damages, so the above limitation or exclusion may not apply to you. To determine if your product issue is covered by warranty, please call Quality Lifts sales and service number. If a repair or replacement part is needed, a RMA # will be issued.

Return equipment or parts to any Quality Lifts authorized service center, transportation prepaid. Be certain to include your name and address, evidence of the purchase date, Quality Lifts RMA# and description of the suspected defect.

If you have any questions about warranty service, please write to Quality Lifts. This warranty gives you specific legal rights and you may also have other rights which vary from state to state.

Repair kits and replacement parts are available for purchase from authorized hydraulic service centers if product is no longer covered by a warranty plan.

Address: 200 Cabel St. Louisville, KY 40206. **Sales and Service:** 1-877-771-5438. **Fax:** 502-583-5488. **Website:** www.qualitylifts.com

As shown in Figure 3, use a good quality hydraulic tool oil once or twice per month to lubricate the air pump assembly through the air valve assembly.

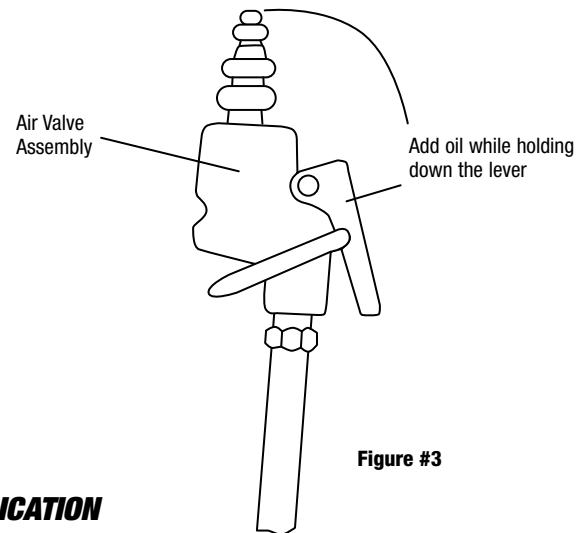


Figure #3

LUBRICATION

All moving joints require lubrication often. Remove handle and grease the lower end of handle where it connects to the release valve.

STORAGE

When the jack is not in use, always make sure the piston rod assembly (#2-0) is fully collapsed. Do not leave the jack outdoors. Always store indoors in a dry, clean location.