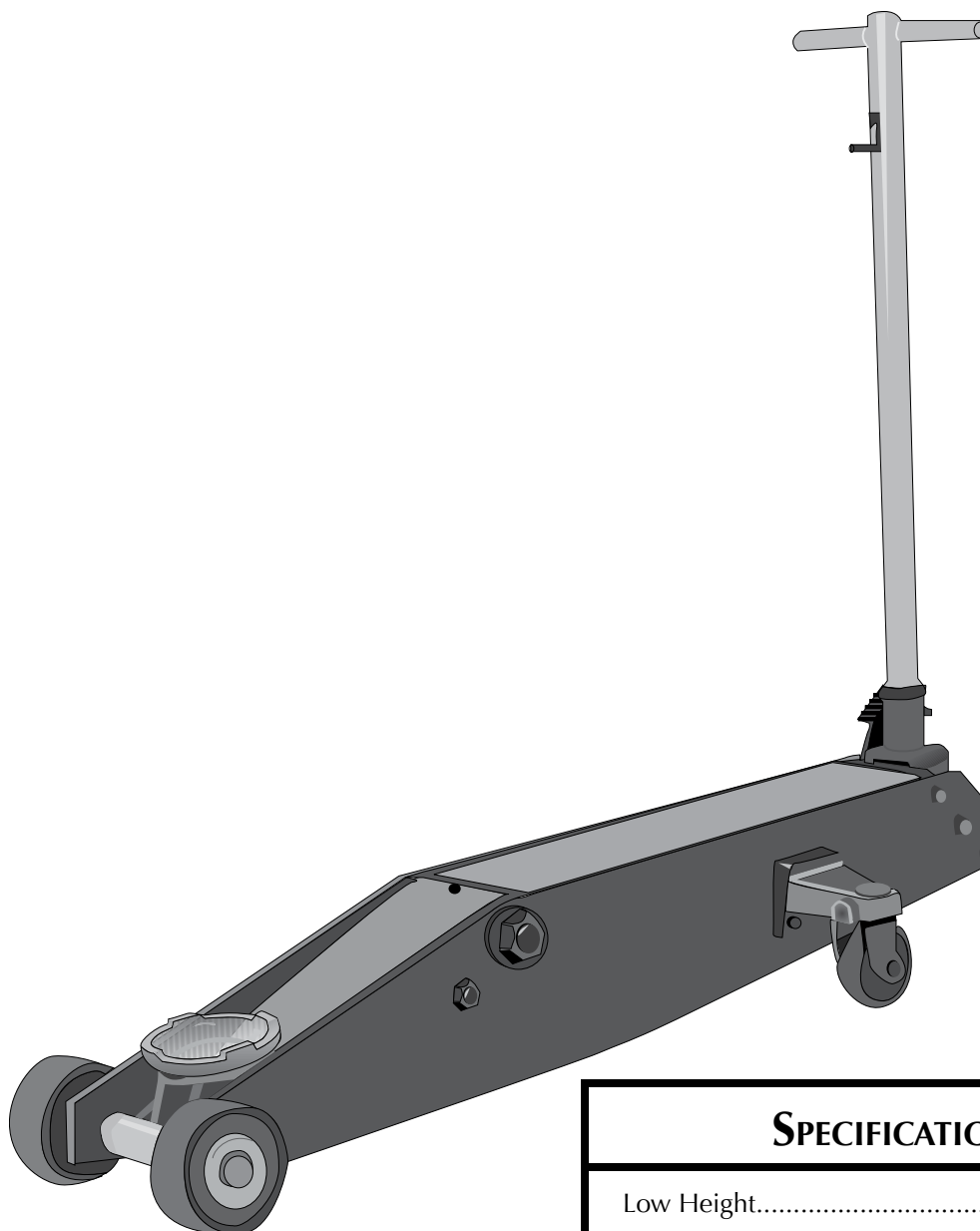


ProValueTM

Old 1204-CJ
New 1204-PV

5 TON SERVICE JACK



SPECIFICATIONS

Low Height.....	5-5/8"
Raised Height.....	22-3/8"
Length	55"
Chassis Width.....	6-5/8"
Handle Length.....	40"
Saddle Diameter.....	6-5/8"
Shipping Wt.	220 Lbs.

PARTS BREAKDOWN & OPERATING MANUAL

Rev. 07/11/07

Model 1204-PV is a self-contained device designed for lifting, but not sustaining, a partial vehicular load. It consists of a frame with wheels and swivel casters supporting a mechanism that actuates a pivoting lift arm equipped with a saddle. It is designed for use by professional auto mechanics.

⚠ WARNING



THIS IS A LIFTING DEVICE ONLY. DO NOT MOVE OR DOLLY THE VEHICLE WHILE ON THE JACK. IMMEDIATELY AFTER LIFTING SUPPORT THE VEHICLE WITH APPROPRIATE MEANS.

DO NOT OVERLOAD. OVERLOADING CAN CAUSE DAMAGE TO OR FAILURE OF THE JACK.

LIFT ONLY ON AREAS OF THE VEHICLE AS SPECIFIED BY THE VEHICLE MANUFACTURER.

CENTER LOAD ON SADDLE PRIOR TO LIFTING. OFF-CENTER LOADS MAY CAUSE DAMAGE TO JACK, LOSS OF LOAD, PROPERTY DAMAGE, PERSONAL OR FATAL INJURY.

THIS JACK IS DESIGNED FOR USE ONLY ON HARD LEVEL SURFACES CAPABLE OF SUSTAINING THE LOAD. USE ON OTHER THAN HARD LEVEL SURFACES CAN RESULT IN JACK INSTABILITY AND POSSIBLE LOSS OF LOAD.

NO ALTERATIONS TO THE JACK SHALL BE MADE.

READ, STUDY AND UNDERSTAND THE OPERATING MANUAL PACKED WITH THIS JACK BEFORE OPERATING.

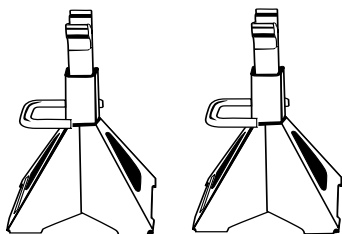
FAILURE TO HEED THESE WARNINGS MAY RESULT IN LOSS OF LOAD, DAMAGE TO JACK, AND/OR FAILURE RESULTING IN PROPERTY DAMAGE, PERSONAL OR FATAL INJURY.

⚠ WARNING

**FOR YOUR SAFETY
AND TO PREVENT INJURY:**

**Use Service Jack for
Lifting Purposes ONLY.**

**Always Support Vehicle with
Support Stands**



ASSEMBLY INSTRUCTIONS

1. This unit comes pre-assembled, except for the handle.
2. Unscrew bolt and nut from handle block assembly. Hold handle parallel with ground, slide into handle block assembly. Turn release valve knob on top of handle until bolt holes line up. Screw the bolt back in and tighten nut.
3. Check all nuts and bolts for tightness before use.

INSPECTION

Visual inspection should be made before each use of the service jack, checking for leaking hydraulic fluid and damaged, loose or missing parts. Each jack must be inspected by a manufacturer's repair facility immediately, if accidentally subjected to an abnormal load or shock. Any jack which appears to be damaged in any way, is found to be badly worn, or operates abnormally **MUST BE REMOVED FROM SERVICE** until necessary repairs are made by a manufacturer's authorized repair facility. It is recommended that an annual inspection of the jack be made by a manufacturer's authorized repair facility and that any defective parts, decals or warning labels be replaced with manufacturer's specified parts.

A list of authorized repair facilities is available from the manufacturer.

IMPORTANT! BEFORE USE...

Air may become trapped in the hydraulic system during transit. To purge air:

1. Open release valve by turning handle counter-clockwise.
2. Pump handle rapidly 4 full strokes. This will expel air that may have entered oil passages during transit.
3. Close release valve by rotating handle clockwise and pump handle.
4. If lift arm raises, jack is ready for use. If not, repeat this procedure.

PARTS BREAKDOWN & OPERATING MANUAL

Rev. 07/11/07

OPERATING INSTRUCTIONS

IMPORTANT: Before attempting to raise a vehicle, check vehicle service manual for recommended lifting surfaces.

1. **To raise load:** Close release valve tightly (by turning handle clockwise) **DO NOT OVERTIGHTEN**. Position jack under load so that saddle will contact load firmly and load is centered so it cannot slip. Operate jack handle until saddle approaches the load. Once again check to see that saddle is correctly positioned. Raise load to desired height. Place jack stands of appropriate capacity under the vehicle. **DO NOT CRAWL UNDER VEHICLE WHILE LIFTING VEHICLE OR PLACING OR REMOVING JACK STANDS!** Place jack stands at vehicle manufacturer's recommended lift areas that provide stable support for the raised vehicle. Slowly turn the jack handle counterclockwise to lower the vehicle onto the jack stands. Lower the vehicle slowly so as not to shock load the jack stands. Once repairs are completed, raise vehicle enough to remove jack stands. Lower vehicle very slowly.
2. **To lower load:** Open Release Valve **VERY SLOWLY** (by turning handle counter-clockwise.) When release valve is opened, saddle and load will be lowered.

CAUTION: Keep hands or feet away from the hinge mechanism of the jack.

OWNER/USER RESPONSIBILITY

The owner and/or user must have an understanding of the manufacturer's operating instructions and warnings before using the Service Jack. Personnel involved in the use and operation of equipment shall be careful, competent, trained, and qualified in the safe operation of the equipment and its proper use when servicing motor vehicles and their components. Warning information should be emphasized and understood. If the operator is not fluent in English, the manufacturer's instructions and warnings shall be read to and discussed with the operator in the operator's native language by the purchaser/owner, making sure that the operator comprehends its contents.

Owner and/or user must study and maintain for future reference the manufacturer's instructions and pertinent warning information. Owner and/or user is responsible for keeping all warning labels and instruction manuals legible and intact. Replacement labels and literature are available from the manufacturer.

MAINTENANCE INSTRUCTIONS

All moving joints require lubrication often. Remove handle and grease the lower end of handle where it rotates in the handle socket. Grease release valve gears. Using a grease gun, grease the lift arm pivot shaft grease fitting until grease appears at the end of the shaft. Oil all lift arm linkages, front wheels and rear casters.

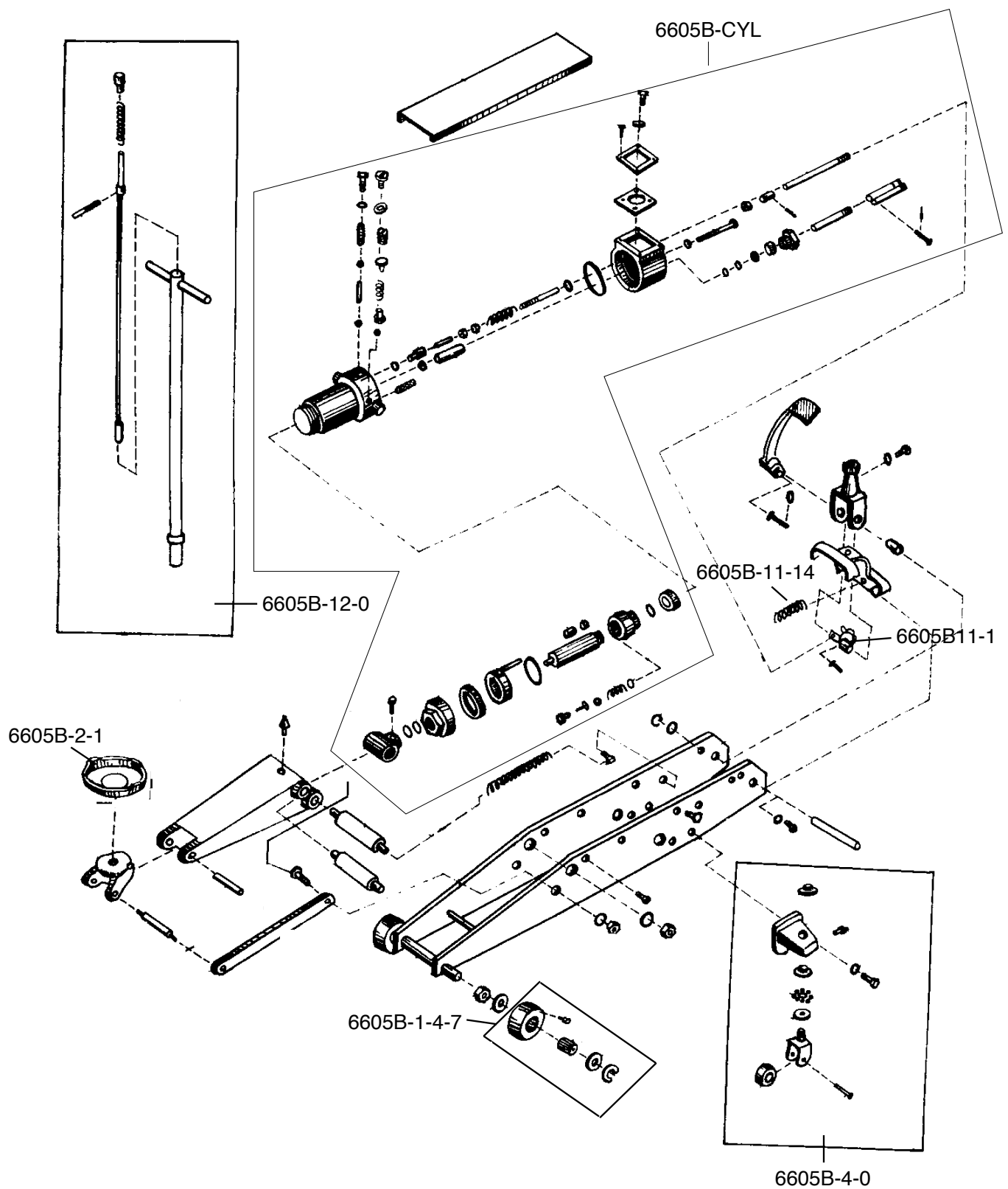
PARTS BREAKDOWN & OPERATING MANUAL

Rev. 07/11/07

1204-PV

Part No.	Description
6605B-2-1	Saddle
6605B-12-0	Handle Assy.
6605B-1-4-7	Wheel Assy.
6605B-4-0	Castor Assembly
6605B-11-1	Cam Step
6605B-11-14	Spring
6605B-Cyl	Hydraulic Cylinder (complete)
6605B-SK	Seal Kit

1204-PV 5 Ton Service Jack



PARTS BREAKDOWN & OPERATING MANUAL

Rev. 07/11/07

ProValueTM

LIMITED WARRANTY

ProValueTM shop equipment and tools excluding accessories, are warranted against defects in materials or workmanship for a period of 90 days from original purchase. We will repair or replace at our option any defective part or unit which proves to be defective in material or workmanship within this warranty plan. This warranty does not cover damage to equipment or tools arising from alteration, abuse, misuse, damage and does not cover any repairs or replacement made by anyone other than ProValueTM or its authorized service centers.

The foregoing obligation is CARQUEST Products, Inc., ProValue's sole liability under this or any implied warranty and under no circumstances shall we be liable for any incidental or consequential damages.

NOTE: Some states do not allow the exclusion or limitation or incidental or consequential damages, so the above limitation or exclusion may not apply to you.

Return equipment or parts to service center transportation prepaid. Be certain to include your name and address, evidence of the purchase date, and description of the suspected defect.

This warranty gives you specific legal rights and you may also have other rights which vary from state to

PARTS BREAKDOWN & OPERATING

Rev. 07/11/07