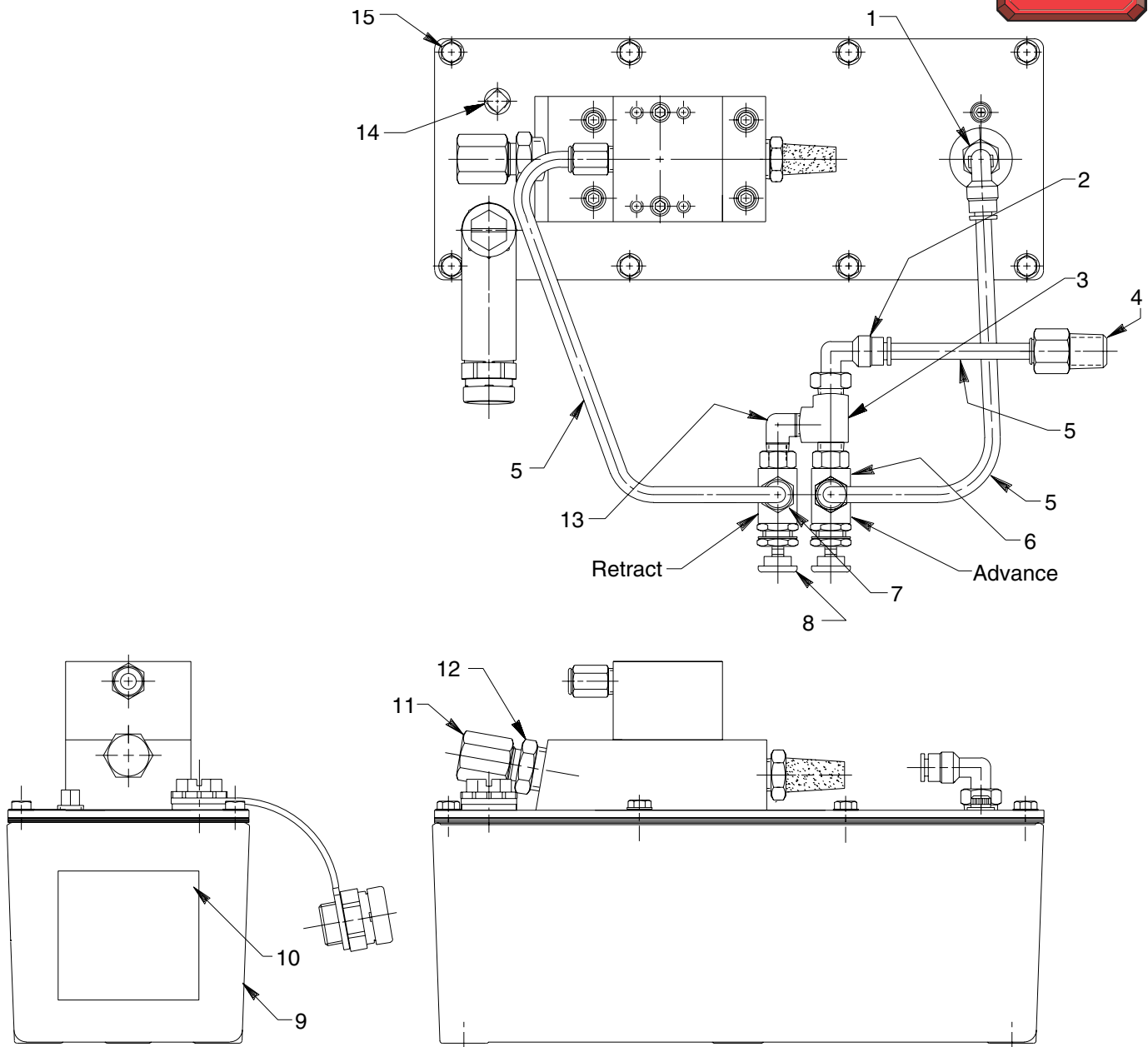


Parts List for:

PA4-WHEE

Internet Address:
<http://www.powerteam.com>**MODEL D**
AIR HYDRAULIC PUMP**To Parts
List**

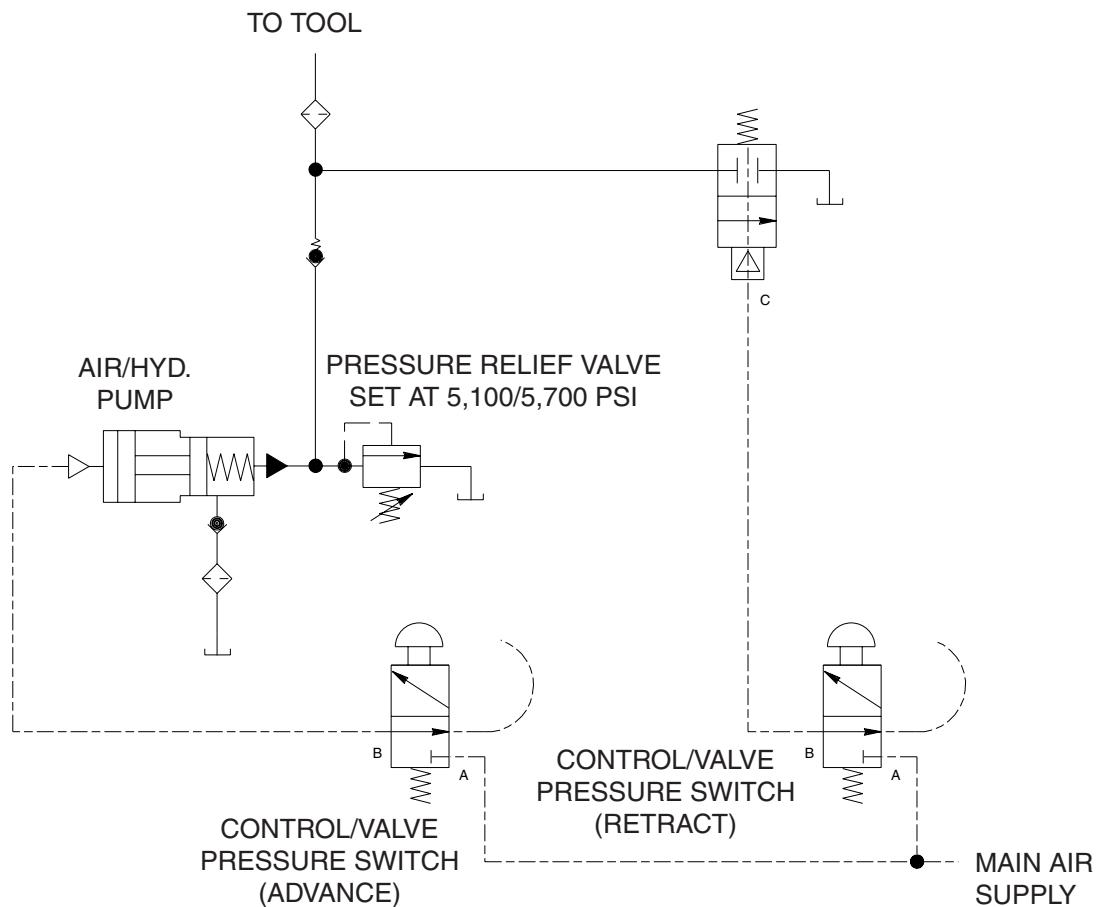
Note: Shaded areas reflect last revision(s) made to this form.

Sheet No. 1 of 3

Rev. 2

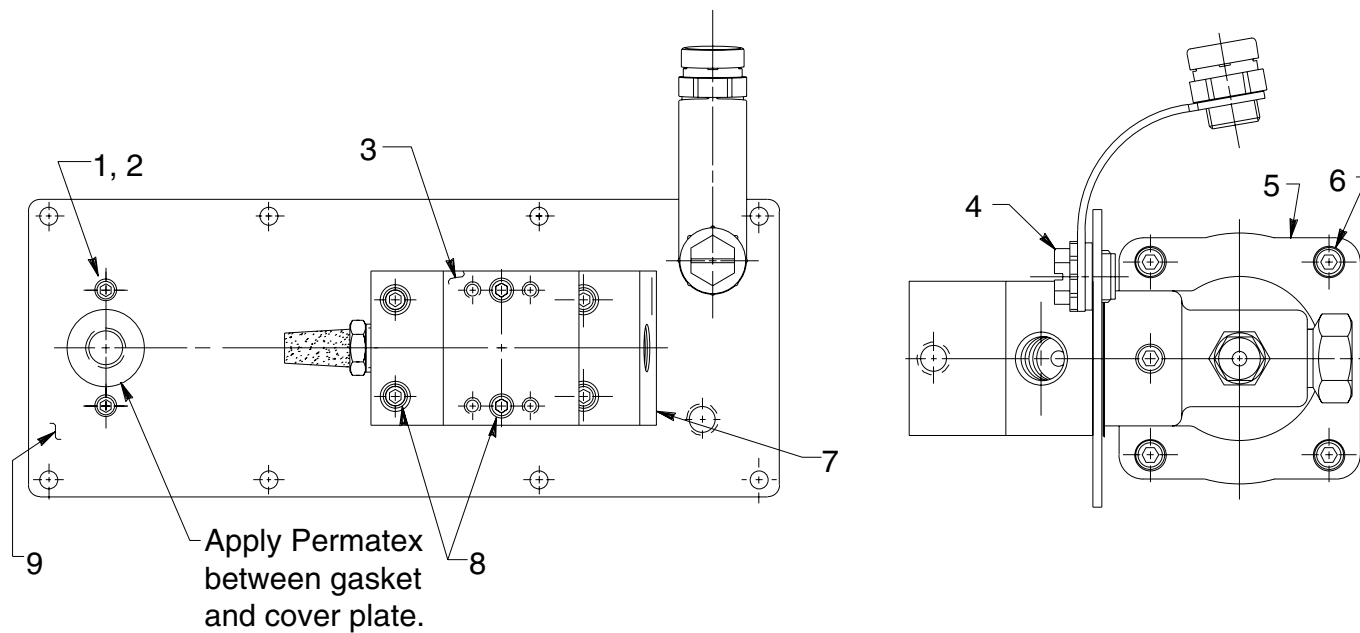
Date: 15 Dec. 1998

Item No.	Part No.	No. Req'd	Description
1	15457	1	Elbow
2	250463	1	90° Elbow Fitting
3	19463	1	Tee Fitting
4	251054	1	Straight Fitting
5	15883	1.83 ft.	Tubing
6	350195	2	Control Valve
7	250464	3	Straight Fitting
8	206105	1	Buttons & Wrench
9	62007	1	Reservoir
10	420690	1	Decal
11	251651	1	Cap Fitting
12	11628	1	Straight Fitting
13	251652	1	90° Street Elbow
14	11048	1	Pressure Plug
15	215952	8	Thread Forming Screw



AIR / HYDRAULIC SCHEMATIC

TOP AND END VIEWS



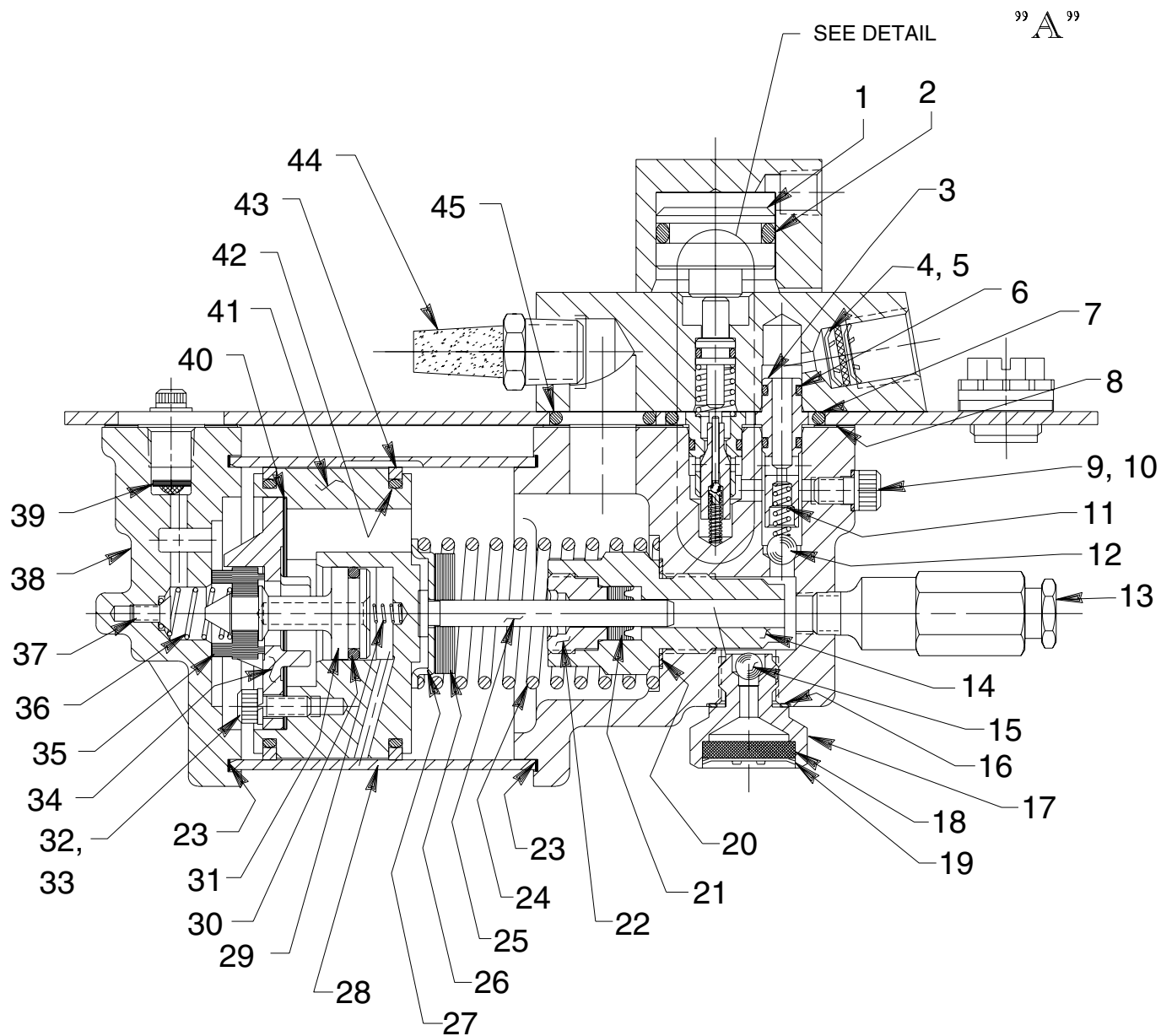
Item No.	Part No.	No. Req'd	Description
1	11434	2	Cap Screw (10-24 UNC X 1/2 Lg.)
2	11089	3	Flat Washer (No. 10)
3	420293	1	Valve Body
4	20937S	1	Filler/Breather Cap
5	50494	1	Pump Body
6	17428	4	Cap Screw (1/4-20 UNC X 3-1/2 Lg.; Torque to 85/95 in. lbs. oiled. Note: Cross torque in increments of 30 in. lbs.)
7	58146	1	Manifold Body
8	11151	4	Cap Screw (10-24 UNC X 1-1/4 Lg.; Torque to 50/60 in. lbs.)
9	420959BK2	1	Cover Plate

Refer to any operating instructions included with this product for detailed information about operation, testing, disassembly, reassembly, and preventive maintenance.

Items found in this parts list have been carefully tested and selected. **Therefore: Use only genuine Power Team replacement parts!**

Additional questions can be directed to our Technical Services Department.

BASIC PUMP ASSEMBLY



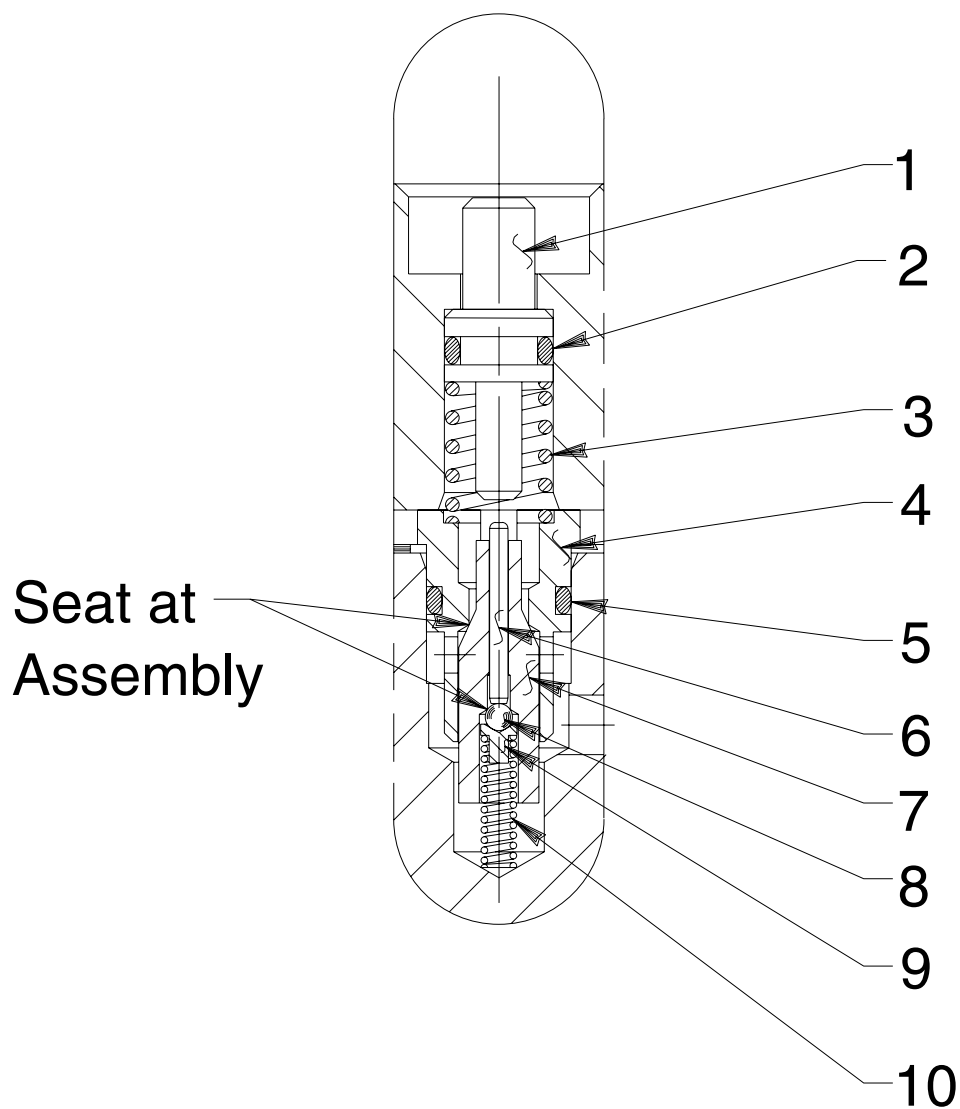
Item No.	Part No.	No. Req'd	Description	Item No.	Part No.	No. Req'd	Description
1	34757	1	Release Piston	23	*17429	2	Backup Ring
2	208144	1	O-ring (1-1/8 x 7/8 x 1/8)	24	*13938	1	Spring (1.452 O.D. X 4-7/16 Lg.)
3	34378	1	Check Valve body	25	28226	1	Piston
4	*250638	1	Oil Filter Disc	26	203143	1	Bumper
5	*11088	2	Retaining Ring	27	210994	1	Spring Guide
6	211053	2	O-ring (3/8 X 1/4 X 1/16)	28	37434	1	Air Cylinder (Note: Locate groove on upper half [top] of pump with chamfered tube end towards rear head as shown.)
7	251215	1	O-ring (1.494 x 1.212 x .141)	29	*12692	1	Spring (3/16 O.D. X 1-11/16 Lg.)
8	34283	1	Gasket	30	*211052	1	O-ring (.900 X .706 X .097)
9	*10442	1	Washer (3/8 X 1/4 X 1/32)	31	305475	1	Exhaust Valve Stem
10	10002	1	Cap Screw (1/4-20 UNC X 3/8 Lg.; Torque to 90/110 in. lbs.)	32	*10241	3	Lockwasher (For #10 bolt)
11	*10445	1	Compression Spring (5/32 O.D. X 3/4 Lg.)	33	211054	3	Screw (#10-24 X 1/2 Lg.; Torque to 50/55 in. lbs.)
12	*10423	1	Steel Ball (9/32 Dia.)	34	33822	1	Piston End Plate
13	21278-50	1	Relief Valve Assembly (Set at 5,100/5,700 PSI)	35	*28183	1	Piston Poppet
14	45278	1	Piston Cylinder (Torque to 90/100 ft. lbs. oiled.)	36	*205679	1	Spring (.485 O.D. X .915 Lg.)
15	*10375	1	Steel Ball (1/4 Dia.)	37	*205674	1	Screw (8-32 UNC X 3/8 Lg.; Torque to 12/18 in. lbs.)
16	*10261	1	Copper Washer (3/4 X 19/32 X 1/32)	38	37468	1	Rear Head
17	308366	1	Filter Adapter (Torque to 40/50 ft. lbs. oiled.)	39	*216296	1	Filter Disc
18	214578	1	Filter	40	*28239	1	Gasket
19	214586	1	Retaining Ring (Internal)	41	52390	1	Piston Body
20	*10263	1	Copper Washer (1" X .765 X 1/32)	42	11229	2	O-ring (2-3/8 X 2-3/16 X 3/32)
21	*13934	1	U-cup	43	*14265	2	Piston Ring
22	*304295	1	Retainer (Note: Apply Loctite No. 277 to external threads and torque to 80/100 in. lbs.)	44	15459	1	Muffler
				45	251214	1	O-ring (1.002 x .720 x .141)

Part numbers marked with an asterisk (*) are contained in Repair Kit No. 300843.



Note: Added asterisks and Repair Kit at last revision(s) made to this form.

DETAIL "A"



Item No.	Part No.	No. Req'd	Description
1	28227	1	Release Valve Button
2	211053	1	O-ring (3/8 X 1/4 X 1/16, -010)
3	*13944	1	Compression Spring (3/8 O.D. X 1/2 Lg.)
4	34377	1	Poppet Retainer
5	13943	1	O-ring (1/2 X 3/8 X 1/16, -012)
6	13937	1	Dowel Pin (Note: Place tapered end toward ball.)
7	29037	1	Release Valve Poppet
8	*14443	1	Steel Ball (3/32 Dia.)
9	209736	1	Ball Retainer
10	*13959	1	Compression Spring (1/8 O.D. x 1/2 Lg.)

Part numbers marked with an asterisk (*) are contained in Repair Kit No. 300843.

Note: Added asterisks and Repair Kit at last revision(s) made to this form.