

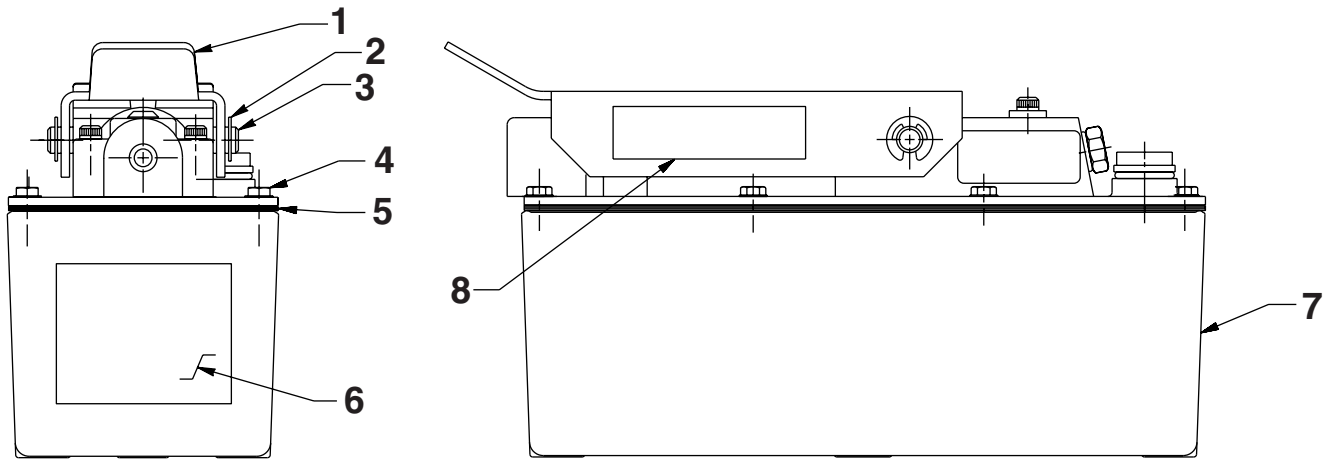
Parts List for:

FC5889
FC5947
FC5948

FC5949
FC5954
P849

MODEL G AIR/HYDRAULIC PUMP

SIDE & END VIEW FOR FC5889, FC5947 & FC5948



Item No.	Part No.	No. Req'd	Description
1	47696BK2	1	Pedal, Hand
2	*11032	2	Ring, Retain Ext. (0.30 x .035)
3	215709	1	Pin
4	215952	8	Screw, Hex Washer HD (10-24 x 5/8; Torque to 25/35 in. lbs. oiled).
5	*47675	1	Gasket, Reservoir
6	305494	1	Decal, Instruction (Oil Lub)
7	62007BK2	1	Reservoir
8	253469	1	Decal, Instruction

PARTS INCLUDED BUT NOT SHOWN

253484	2	Screw, Hex (Washer HD Tapping; For pump mounting purposes only.)
--------	---	--

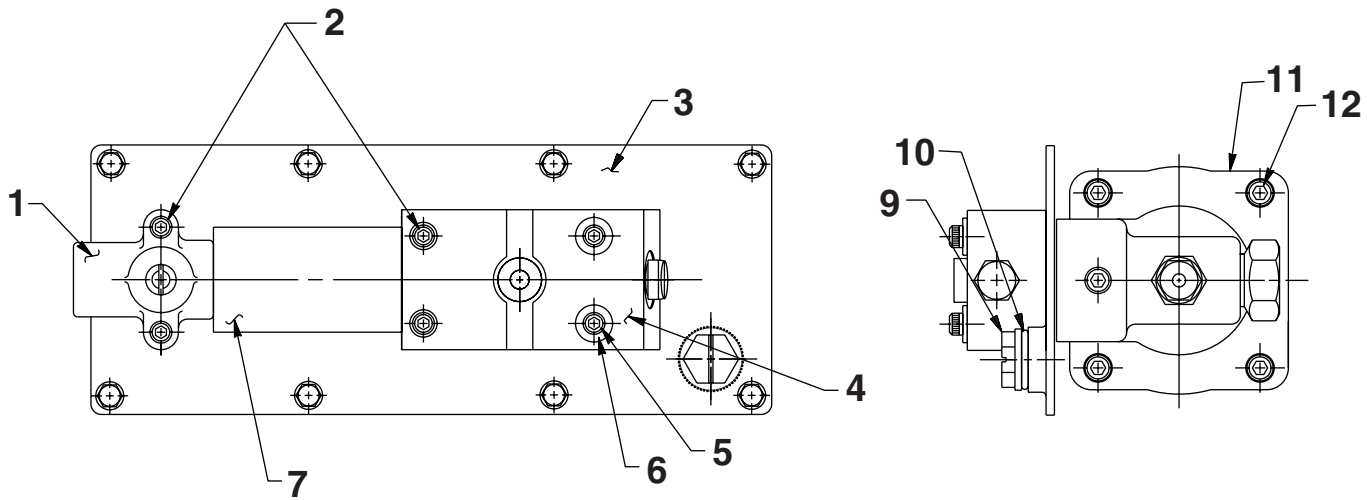
Part numbers marked with an asterisk (*) are contained in Repair Kit No. 301004.

(Rotary Part No. IN30047)

Sheet No. 1 of 5

Rev 13 Date: 23 July 2003

TOP & END VIEWS FOR FC5889, FC5947 & FC5948



Item No.	Part No.	No. Req'd	Description
1	37199	1	Body, Air Intake Valve
2	11151	4	Screw, Socket HD (10-24 x 1-1/4; Torque to 50/60 in. lbs.)
3	421813BK2	1	Plate, Cover
4	59051	1	Body, Release Valve
5	11435	2	Screw, Socket HD (10-24 x 1-3/4; torque to 50/60 in. lbs.)
6	11089	2	Washer, Flat (.51 x .22)
7	*29992	1	Tube, Foam
9	251689	1	Cap, Filler Breather
10	*10273	2	O-ring (.81 x .62 Nitrile)
11	64767	1	Body, Pump
12	17428	4	Screw, Socket HD (1/4-20 x 3-1/2; Torque to 85/95 in. lbs. oiled; Note: Cross torque in increments of 30 in. lbs.)

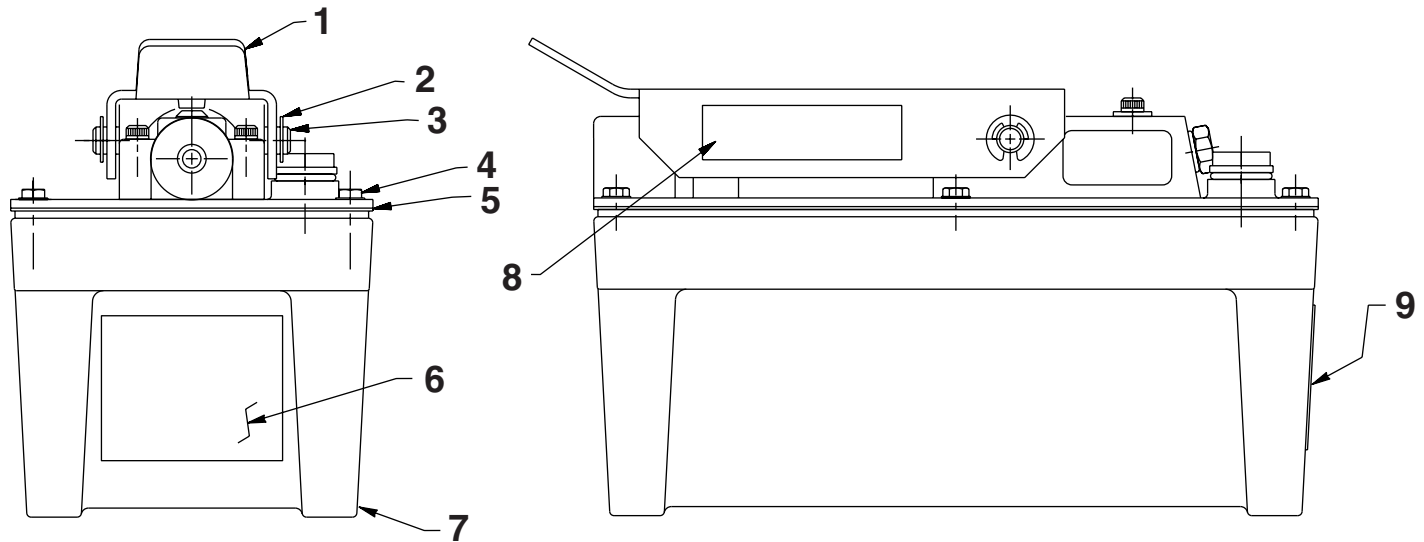
Part numbers marked with an asterisk (*) are contained in Repair Kit No. 301004.

Refer to any operating instructions included with this product for detailed information about operation, testing, disassembly, reassembly, and preventive maintenance.

Items found in this parts list have been carefully tested and selected. **Therefore: Use only genuine Power Team replacement parts!**

Additional questions can be directed to our Technical Services Department.

SIDE & END VIEW FOR FC5949 & FC5954



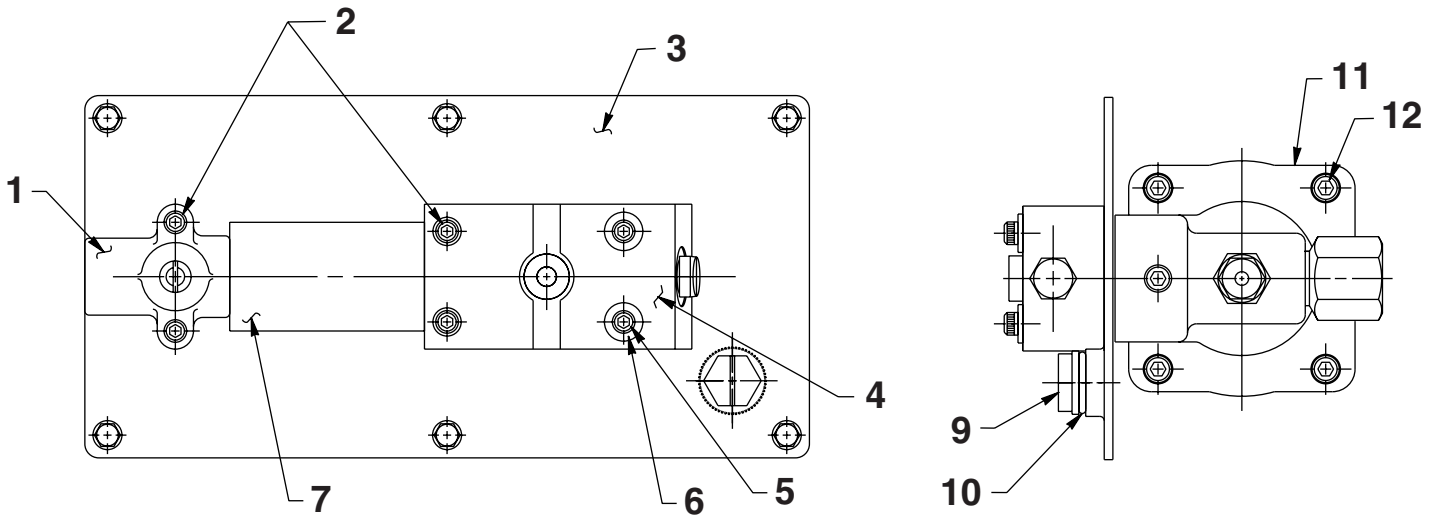
Item No.	Part No.	No. Req'd	Description
1	47696BK2	1	Pedal, Hand
2	†11032	2	Ring, Retain Ext. (0.30 x .035)
3	215709	1	Pin
4	215952	6	Screw, Hex Washer HD (10-24 x 5/8; Torque to 35/42 in. lbs. oiled).
5	†33853	1	Gasket, Reservoir
6	†305494	1	Decal, Instruction (Oil Lub)
7	41300BK2	1	Reservoir
8	253469	1	Decal, Instruction
9	251672	1	Decal, Warning

PARTS INCLUDED BUT NOT SHOWN

253484	2	Screw, Hex (Washer HD Tapping; For pump mounting purposes only.)
--------	---	--

Part numbers marked with a dagger (†) are contained in Repair Kit No. 301021.

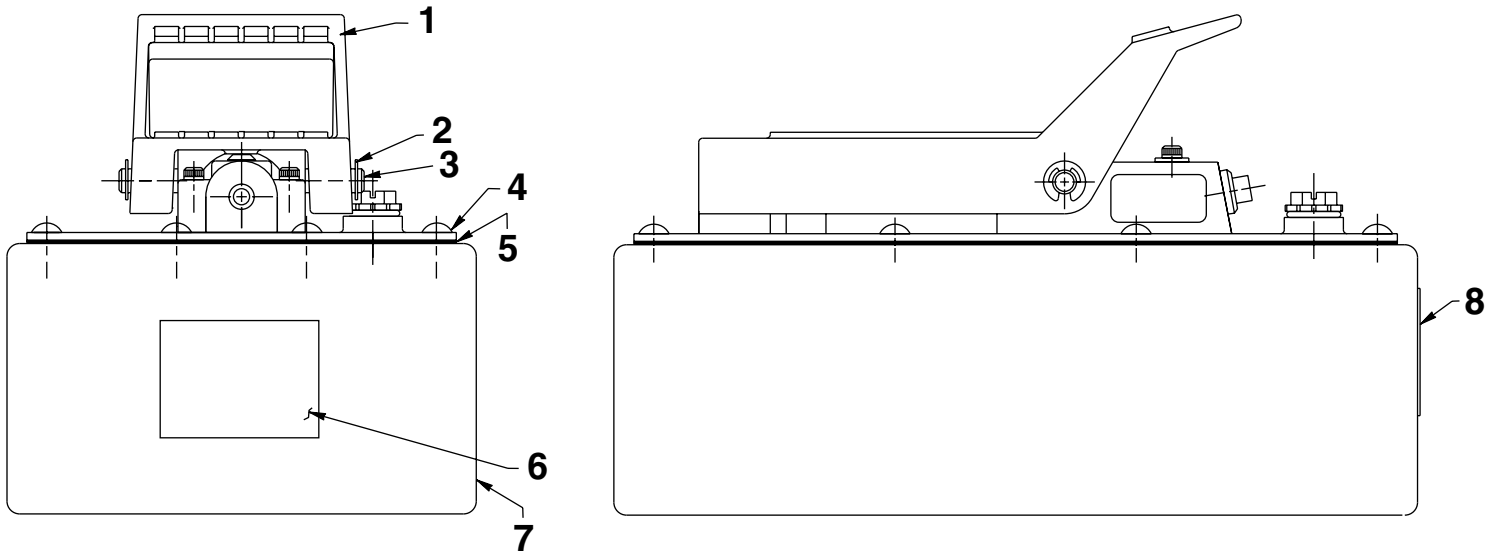
TOP & END VIEWS FOR FC5949 & FC5954



Item No.	Part No.	No. Req'd	Description
1	37199	1	Body, Air Intake Valve
2	11151	4	Screw, Socket HD (10-24 x 1-1/4; Torque to 50/60 in. lbs.)
3	421870BK2	1	Plate, Cover
4	59051	1	Body, Release Valve
5	11435	2	Screw, Socket HD (10-24 x 1-3/4; torque to 50/60 in. lbs.)
6	11089	2	Washer, Flat (.51 x .22)
7	†29992	1	Tube, Foam
9	251689	1	Cap, Filler Breather
10	†10273	2	O-ring (.81 x .62 Nitrile)
11	64767	1	Body, Pump
12	17428	4	Screw, Socket HD (1/4-20 x 3-1/2; Torque to 85/95 in. lbs. oiled; Note: Cross torque in increments of 30 in. lbs.)

Part numbers marked with a dagger (†) are contained in Repair Kit No. 301021.

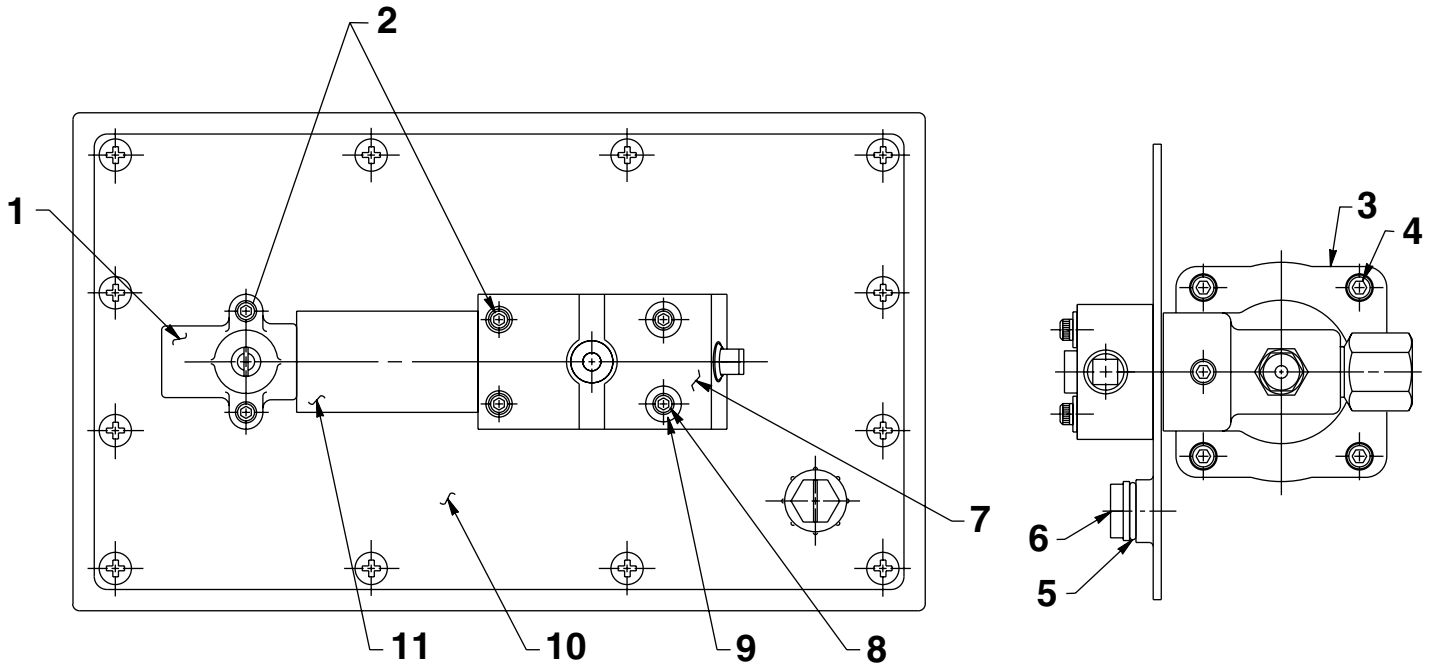
SIDE & END VIEW FOR P849



Item No.	Part No.	No. Req'd	Description
1	41322	1	Pedal, Foot
2	•11032	2	Ring, Retain Ext. (0.30 x .035)
3	28386	1	Pin
4	252952	12	Screw, Round HD (1/4-20 x 3/4)
5	•46271	1	Gasket, Reservoir
6	•305494	1	Decal, Instruction (Oil Lub)
7	64153BK2	1	Reservoir
8	251762	2	Decal, Warning

Part numbers marked with a bullet (•) are contained in Repair Kit No. 301012.

TOP & END VIEWS FOR P849

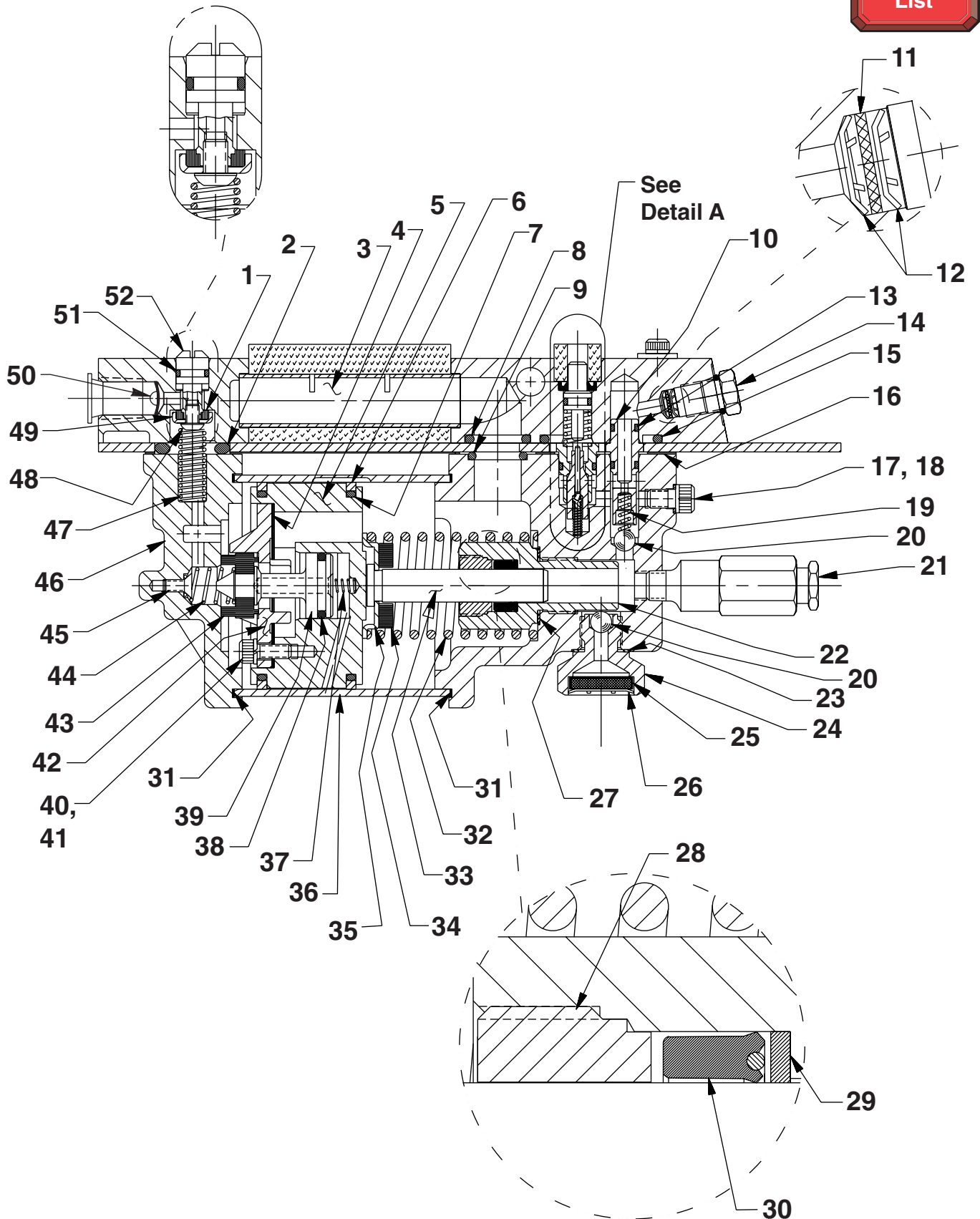


Item No.	Part No.	No. Req'd	Description
1	37199	1	Body, Air Intake Valve
2	11151	4	Screw, Socket HD (10-24 x 1-1/4; Torque to 50/60 in. lbs.)
3	64767	1	Body, Pump
4	17428	4	Screw, Socket HD (1/4-20 x 3-1/2; Torque to 85/95 in. lbs. oiled; Note: Cross torque in increments of 30 in. lbs.)
5	•10273	2	O-ring (.81 x .62 Nitrile)
6	251689	1	Cap, Filler Breather
7	501000	1	Body, Release Valve
8	11435	2	Screw, Socket HD (10-24 x 1-3/4; torque to 50/60 in. lbs.)
9	11089	2	Washer, Flat (.51 x .22)
10	59302BK2	1	Plate, Cover
11	•29992	1	Tube, Foam

Part numbers marked with a bullet (•) are contained in Repair Kit No. 301012.

BASIC ASSEMBLY

To Parts List



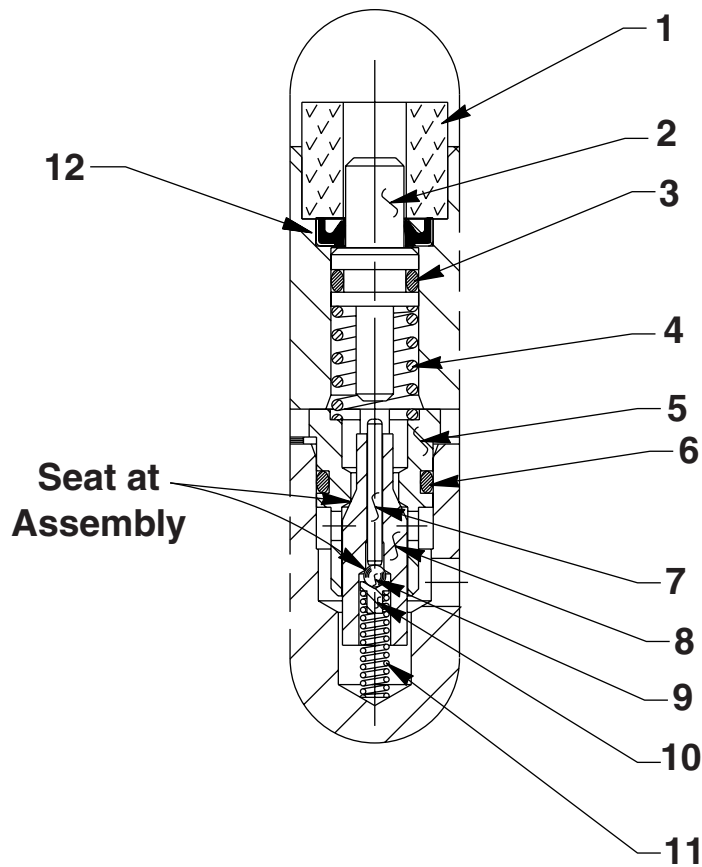
Parts List, Form No. 101802, Back sheet 4 of 5

Item No.	Part No.	No. Req'd	Description	Item No.	Part No.	No. Req'd	Description
1	•†*28182	1	Poppet, Air Valve		48010	1	Adapter, Filter (Torque to 40/50 ft. lbs. oiled; For FC5949, FC5954 & P849)
2	•†*251717	1	O-ring (1.00 x .62 Nitrile)				
3	28387	1	Muffler				
4	•†*28239	1	Gasket	25	214578	1	Filter
5	52390	1	Body, Piston	26	214586	1	Ring, Retain Int. (0.63 x .015)
6	•†*14265	2	Ring, Piston (2.77 x 2.54)	27	•†*10263	1	Washer, Special (1.00 x .77)
7	•†*251835	2	O-ring (2.50 x 2.31 Nitrile)	28	•†*351662	1	Retainer (Note: See "INSTRUCTIONS FOR RETAINER REPLACEMENT" on back sheet 5 of 5.)
8	•†*10276	1	O-ring (1.00 x .75 Nitrile)				
9	•†*10272	1	O-ring (.75 x .50 Nitrile)	29	•†*12488	1	Washer, Backup (.63 x .44)
10	34378	1	Body, Check Valve	30	•†*253095	1	U-cup (.69 x .44 x .25 H)
11	•†*214596	1	Disc, Filter (Not part of P849)	31	•†*17429	2	Washer, Backup (2.94 x 2.75)
12	•†*12201	2	Ring, Retain Int. (0.18 x .010)	32	•†*13938	1	Spring (1.45 OD x 4.4 x .12 WS)
13	*†211053	2	O-ring (.37 x .25 Nitrile)	33	28400	1	Piston (7/16")
14	17147	1	Fitting, Plug (7/16; Not part of P849)	34	•†202613	1	Bumper
	10970	1	Fitting, Plug (1/4 NPTF; For P849)	35	211082	1	Guide, Spring
15	•†*11841	1	O-ring (1.62 x 1.37 Nitrile)	36	37434	1	Cylinder, Air (Locate groove on upper half (top) of pump with chamfered tube end towards rear head as shown.)
16	•†*351021	1	Gasket, Cover Plate				
17	•†*10442	1	Washer, Copper (.37 x .25)	37	•†*12692	1	Spring (.18 OD x 1.70 x .02 WS)
18	10002	1	Screw, Socket HD (1/4-20 x 3/8; Torque to 90/110 in. lbs.)	38	•†*211052	1	O-ring (.90 x .70 Nitrile)
19	•†*10445	1	Spring (.16 OD x .72 x .01 WS)	39	305475	1	Stem, Exhaust Valve
20	•†*10423	2	Ball (9/32" Dia. Steel)	40	•†*10241	3	Washer, Lock (.33 x .20)
21	21278-32	1	Valve, Relief (Set at 3,100/3,300 PSI; For FC5889)	41	211054	3	Screw, Socket HD (10-24 x 1/2; Torque to 50/55 in. lbs.)
	21278-20	1	Valve, Relief (Reset at 1,700/1,900 PSI; For FC5947)	42	33822	1	Casting, Piston End Plate
	21278-20	1	Valve, Relief (Reset at 1,800/2,000 PSI; For P849)	43	•†*28183	1	Poppet, Piston
	21278-25	1	Valve, Relief (Reset at 2,200/2,400 PSI; For FC5948)	44	•†*205679	1	Spring (.49 OD x .92 x .04 WS)
	21278-35	1	Valve, Relief (Set at 3,500/3,800 PSI; For FC5954)	45	•†*205674	1	Screw, Flat HD (8-32 x 3/8; Torque to 12/18 in. lbs.)
	21278-35	1	Valve, Relief (Reset at 3,500/3,700 PSI; For FC5949)	46	51480	1	Head, Rear
			(Apply Loctite 592 [PT #905516] or equiv. and torque to 150/170 in. lbs.)	47	•†*253348	1	Spring (.36 OD x 1.50 x .05 WS)
				48	253420	1	Screw, Button Head (8-32 x 1/4)
				49	28198	1	Guide, Seal
				50	•†*216296	1	Filter
				51	•†*10267	1	O-ring (.43 x .31 Nitrile)
				52	33841	1	Button, Actuator
22	421642	1	Housing, Seal & Piston (Torque to 90/100 ft. lbs. oiled)				
23	•†*10261	1	Washer, Copper (.75 x .60)				
24	421539	1	Adapter, Filter (Torque to 40/50 ft. lbs. oiled; For FC5889, FC5947 & FC5948)				

Part numbers marked with an asterisk (*) are contained in Repair Kit No. 301004.
 Part numbers marked with a dagger (†) are contained in Repair Kit No. 301021.
 Part numbers marked with a bullet (•) are contained in Repair Kit No. 301012.



DETAIL A



Item No.	Part No.	No. Req'd	Description
1	•†*206504	1	Tube, Foam
2	28227	1	Button, Release Valve
3	•†*10266	1	O-ring (.37 x .25 Nitrile)
4	•†*251297	1	Spring (.36 OD x .51 x .05 WS)
5	34377	1	Retainer, Poppet
6	•†*15279	1	O-ring (.50 x .37 Nitrile)
7	13937	1	Pin, Dowel (.06 x .63)
8	29037	1	Poppet, Release Valve
9	•†*14443	1	Ball (3/32" Dia. Steel)
10	209736	1	Retainer, Ball
11	•†*13959	1	Spring (.12 OD x .50 x .02 WS)
12	•†*15620	1	Seal, Oil Shaft (.50 x .25 NIT)

Part numbers marked with an asterisk (*) are contained in Repair Kit No. 301004.

Part numbers marked with a dagger (†) are contained in Repair Kit No. 301021.

Part numbers marked with a bullet (•) are contained in Repair Kit No. 301012.

INSTRUCTIONS FOR RETAINER REPLACEMENT

Your pump's retainer is locked into place by one of the two following methods. Determine which method was used on your pump's retainer, then follow the appropriate steps to remove the old and install and stake the new.

Method 1 - Retainer shows no sign of stake marks

1. This retainer has been locked in place with a Loctite product. To replace it, a moderate amount of heat needs to be applied to the cylinder nut (in the area of the retainer) to soften the existing Loctite allowing it to be removed.
2. Install the new retainer into the cylinder nut and torque to 80/100 in. lbs. **Note: Do not use a Loctite product this time but stake the new retainer in place according to instructions in Step 3.**
3. To lock retainer into place, use a center punch positioned in the seam between the retainer and the cylinder nut and stake the new retainer in two places approximately 180° apart.

Method 2 - Retainer has two stake marks in the seam between the retainer and the cylinder nut

1. For replacement of this retainer, the stake marks must be removed. Using a 1/8" or larger diameter drill bit, remove the existing stakes by drilling a short distance into the stake marks. Remove the retainer.
2. Install the new retainer into the cylinder nut and torque to 80/100 in. lbs.
3. To lock retainer into place, use a center punch positioned in the seam between the retainer and the cylinder nut and stake the new retainer in two places approximately 180° apart.

NOTE: Do not stake in the old stake marks.

